

Compact C-Mount lenses for up to 5 megapixel 1.3" sensor. This 28 mm focal length lens covers an image circle of 24 mm, which enables to achieve a large field of view at a short working distance.

The lockable focus and iris setting, a robust housing and the 400 nm to 1000 nm broadband AR coating makes this lens ideal for measurement applications in factory automation.

For harsh environmental condition a ruggedized version, with special fixed mechanics is available. A version with motorized p-iris is offered, too. Also available lenses for 1.3" sensor is a 35 mm focal length lens and a series of 5 focal lengths, high resolution anti-shading lenses.



Xenoplan 2.0/28

Key features

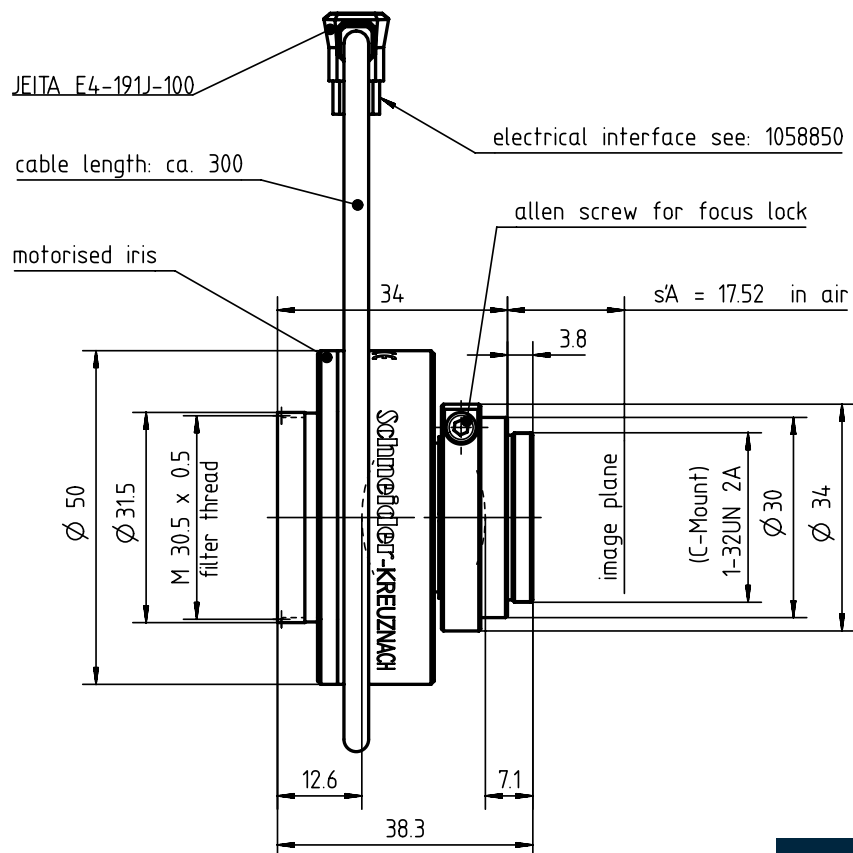
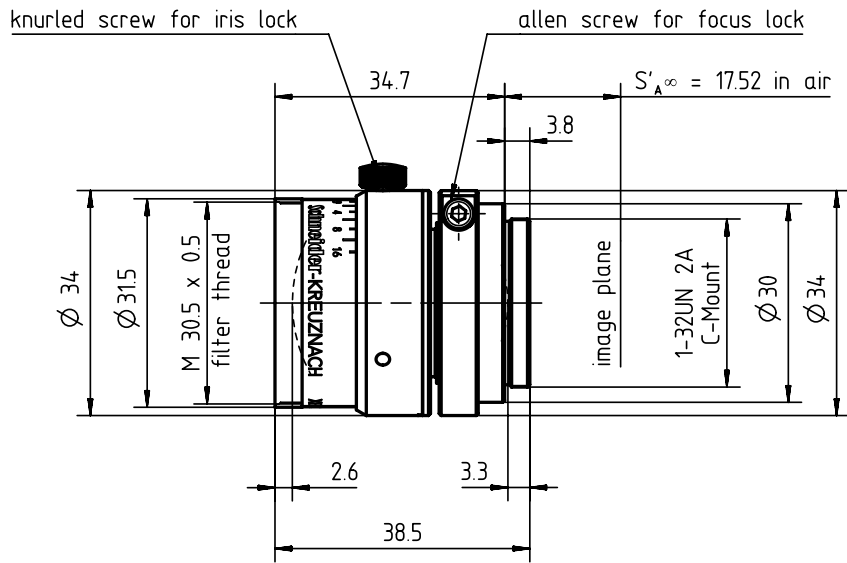
- For up to 1.3" 5 megapixel sensor
- Covers 24 mm image circle
- Version with motorized p-iris available
- 400 - 1000 nm broadband AR coating
- Ruggedized version available
- Focus and iris setting lockable

Applications

- Traffic surveillance
- 2D measurement
- Automated inspection systems

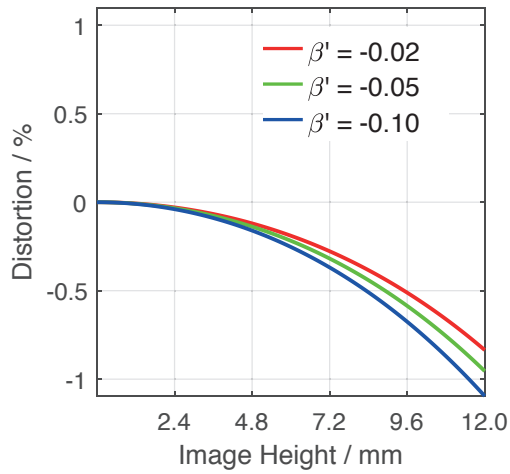
| Name | Xenoplan 2.0/28 |
|------------------------------|-----------------------|
| Type | -0901 -0911 -1901 |
| Focal Length [mm] | 28 |
| Magnification | -0.5 |
| Image circle [mm] | 24 |
| Resolution [μm] | 6.45 |
| F/# range | 2 ... 11 |
| NA | 0.25 |
| Interface | C-Mount |
| Working distance [mm] | ∞ - 64 |
| AoV [°] | 44 |
| Focus control | manual |
| Transmission [nm] | 400 - 1000 |
| Filter thread [mm] | M30.5 x 0.5 |
| Dimensions L x D [mm] | 38.0 x 50.0 |

| Name | Xenoplan 2.0/28 |
|--------------------------|-----------------|
| Weight [g] | 122 |
| Storage temperature [°C] | -25 ... +70 |
| f'_{eff} [mm] | 29.29 |
| S_F [mm] | -16.31 |
| $S'_{F'}$ [mm] | 20.82 |
| HH' [mm] | -2.94 |
| β'_p | 1.049 |
| S_{EP} [mm] | 11.62 |
| S'_{AP} [mm] | -9.90 |
| Σd [mm] | 18.52 |
| ID | 1001972 |
| ID Ruggedized | 1062857 |
| ID Motorized p-iris | 1061456 |

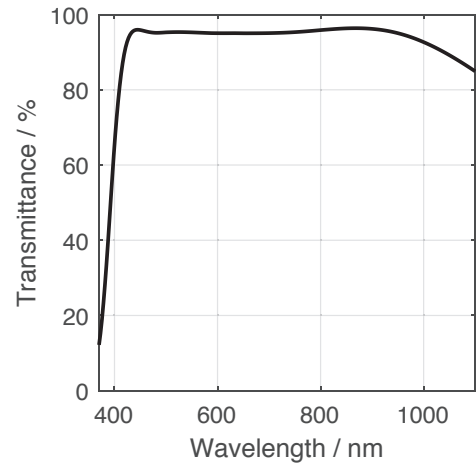


Motorized p-iris

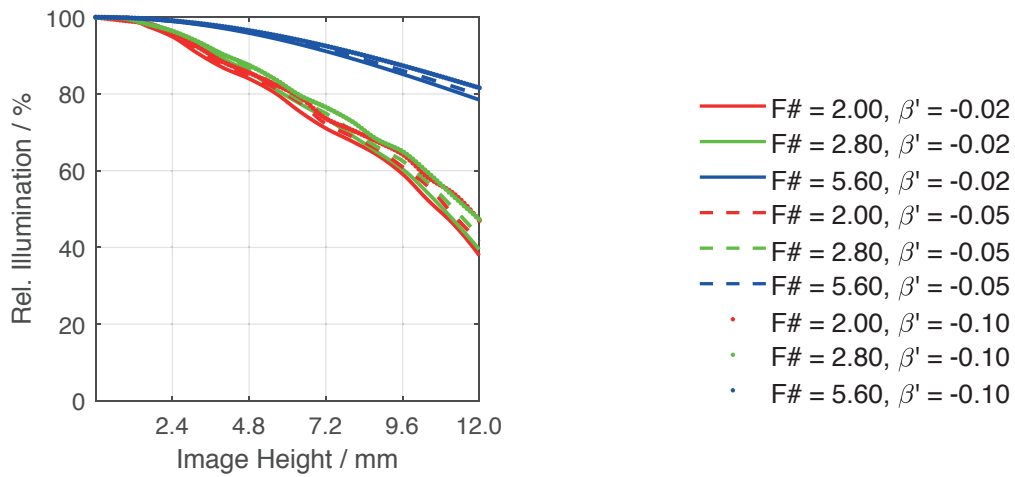
Distortion vs. Image Height



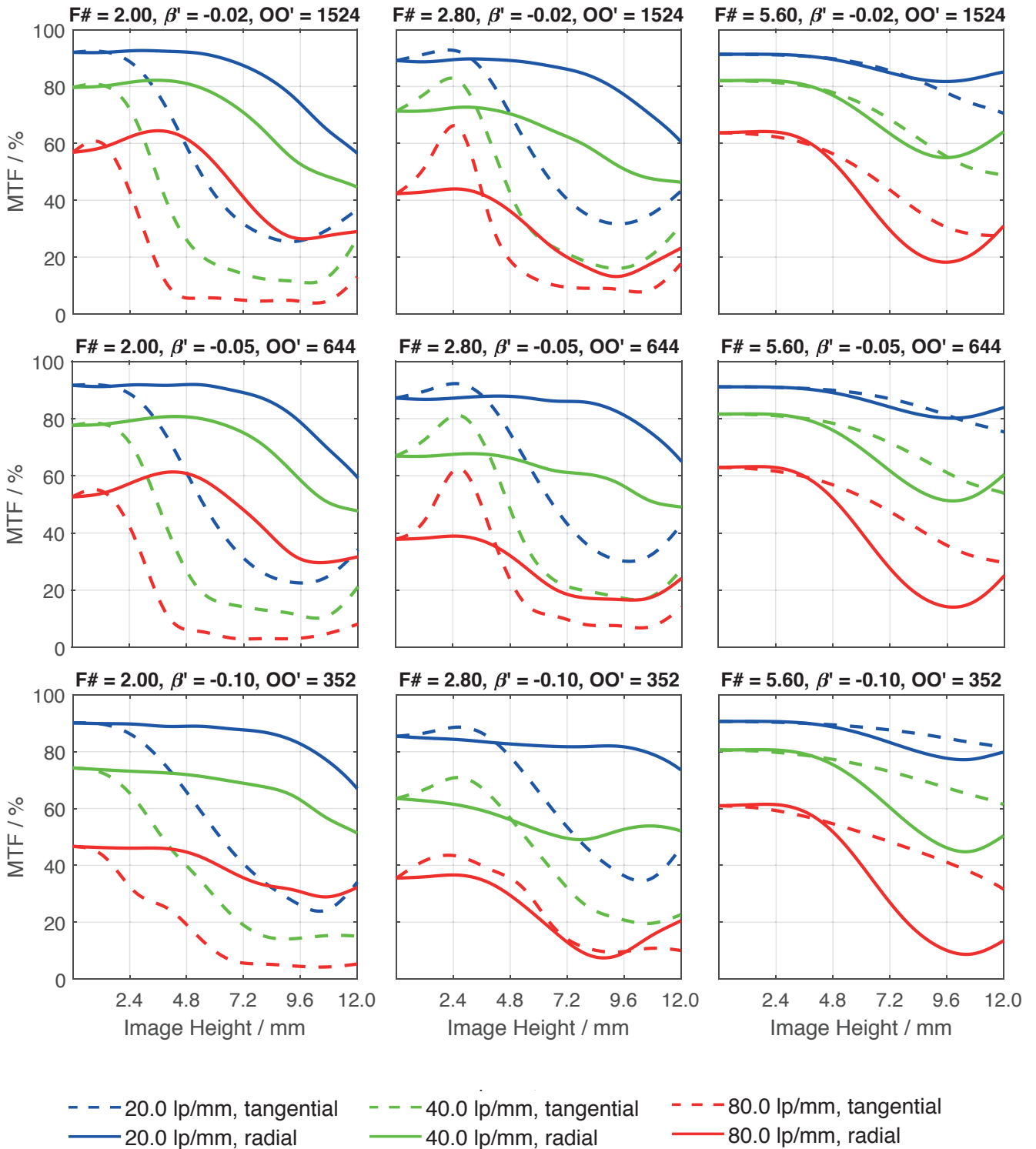
Transmittance vs. Wavelength



Relative Illumination vs. Image Height



| Spectrum Name | VIS | | | | | |
|------------------|-----|-----|-----|-----|-----|-----|
| Wavelengths [nm] | 425 | 475 | 525 | 575 | 625 | 675 |
| Weights | 8 | 16 | 23 | 22 | 19 | 13 |



| Accessories | Mount | Length | ID |
|-------------|---------------------------|--------|---------|
| Adapter | CS-Mount Adapter | 5 mm | 25081 |
| | C-Mount / M42 x 1 Adapter | - | 1075817 |
| Ext. Tube | C-Mount | 5 mm | 39316 |
| | C-Mount | 8 mm | 39315 |
| | C-Mount | 10 mm | 39312 |

Get more information

Contact our local offices



Headquarter Germany

Jos. Schneider Optische Werke GmbH
Ringstraße 132
55543 Bad Kreuznach
☎ +49 671 601 205
✉ cs@schneiderkreuznach.com
www.schneiderkreuznach.com

Offices Worldwide

China

☎ +86 755 8832 1170
✉ shawn.liu@schneider-asiapacific.com

North America

☎ +1 800 645 7239 (East Coast)
☎ +1 800 228 1254 (West Coast)
✉ info@schneideroptics.com

Singapore

☎ +65 9488 0062
✉ thongv@schneiderkreuznach.com

Compact C-Mount lenses for up to 5 megapixel 1.3" sensor. This 35 mm focal length lens covers an image circle of 24 mm, which enables to achieve a large field of view at a short working distance.

The lockable focus and iris setting, a robust housing and the 400 nm to 1000 nm broadband AR coating makes this lens ideal for measurement applications in factory automation. For harsh environmental condition a ruggedized version, with special fixed mechanics is available.

A version with motorized p-iris is offered, too. Also available lenses for 1.3" sensor is a 28 mm focal length lens and a series of 5 focal lengths, high resolution anti-shading lenses.



Xenoplan 2.0/35

Key features

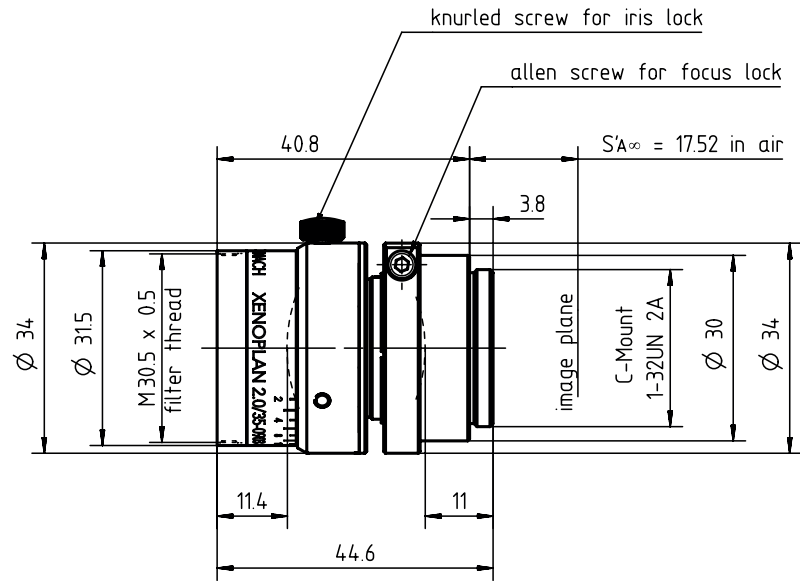
- For up to 1.3" 5 megapixel sensor
- Covers 24 mm image circle
- Version with motorized p-iris available
- 400 - 1000 nm broadband AR coating
- Ruggedized version available
- Focus and iris setting lockable

Applications

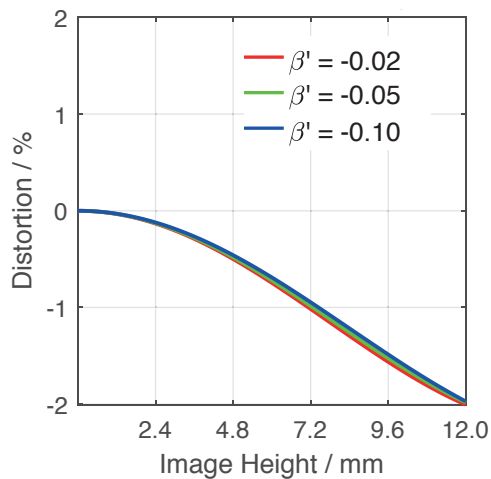
- Traffic surveillance
- 2D measurement
- Automated inspection systems

| Name | Xenoplan 2.0/35 |
|------------------------------|-----------------|
| Type | -0903 |
| Focal Length [mm] | 35.07 |
| Magnification | -0.5 |
| Image circle [mm] | 30 |
| Resolution [μm] | 6.45 |
| F/# range | 2.00 ... 16 |
| NA | 0.25 |
| Interface | C-Mount |
| Working distance [mm] | 80.41 |
| AoV [$^\circ$] | 46.31 |
| Focus control | manual |
| Transmission [nm] | 400 - 1000 |
| Filter thread [mm] | M30.5 x 0.5 |
| Dimensions L x D [mm] | 44.6 x 34.0 |

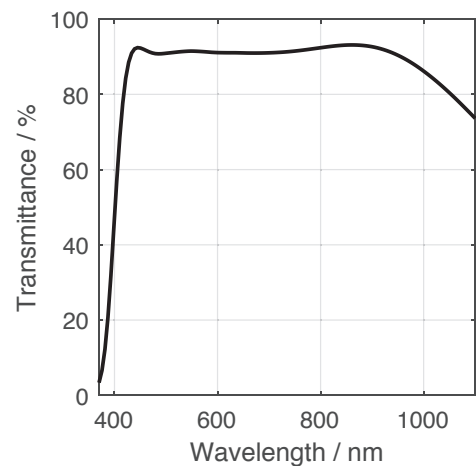
| Name | Xenoplan 2.0/35 |
|--|-----------------|
| Weight [g] | 90 |
| Storage temperature [$^\circ\text{C}$] | -25 ... +70 |
| f'_{eff} [mm] | 35.07 |
| S_F [mm] | -19.18 |
| $S'_{F'}$ [mm] | 24.69 |
| HH' [mm] | -3.88 |
| β'_P | 1.060 |
| S_{EP} [mm] | 13.92 |
| S'_{AP} [mm] | -12.47 |
| Σd [mm] | 22.39 |
| ID | 1075451 |



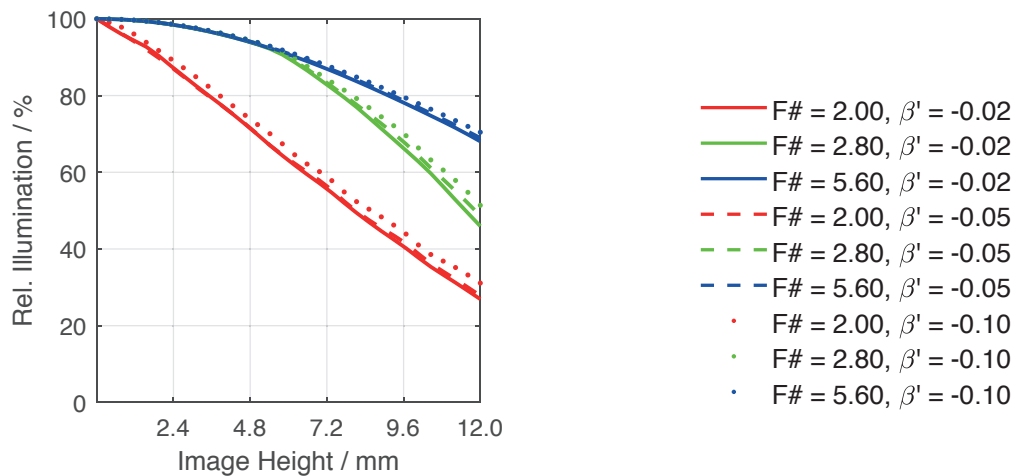
Distortion vs. Image Height



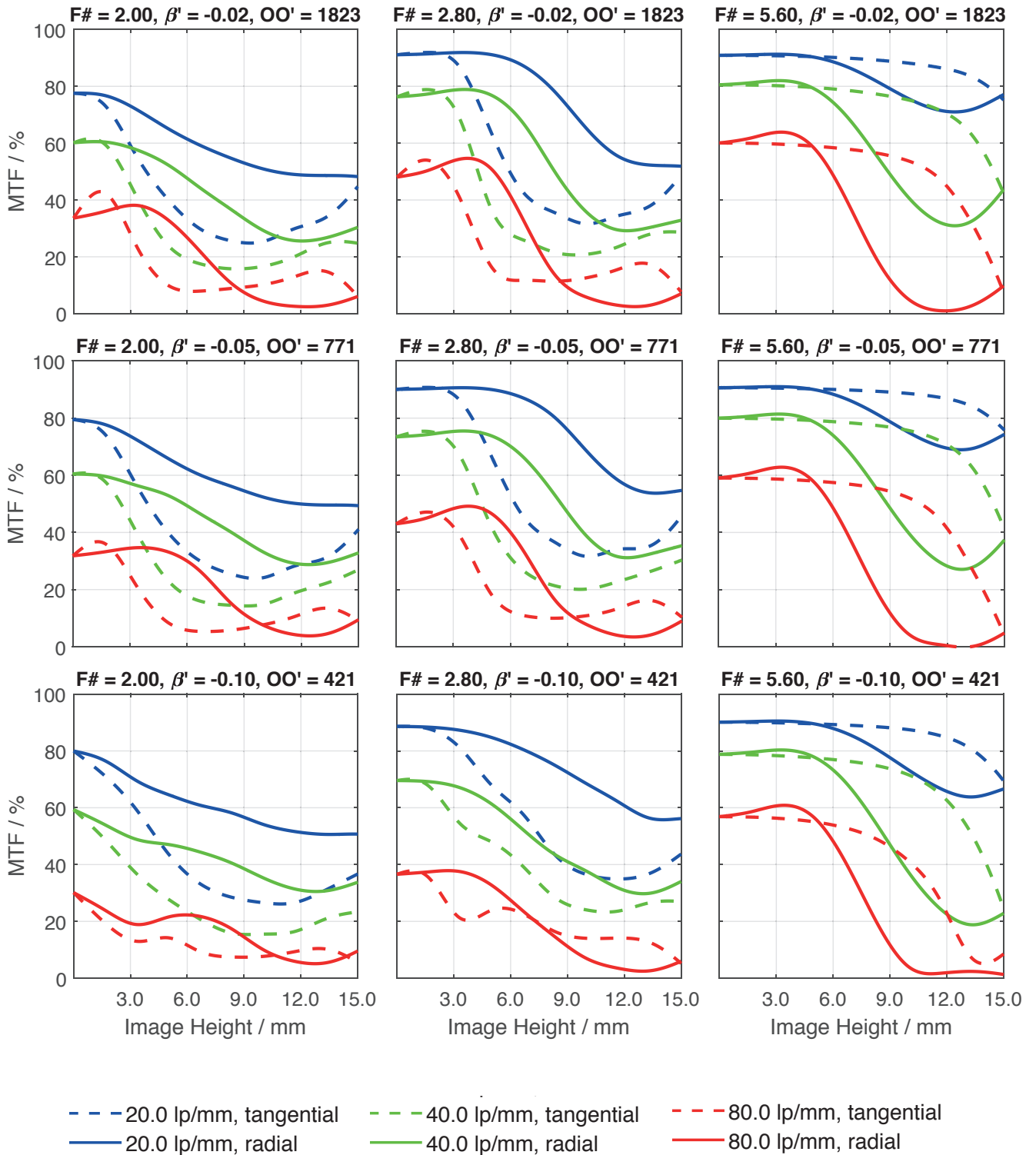
Transmittance vs. Wavelength



Relative Illumination vs. Image Height



| Spectrum Name | VIS | | | | | |
|------------------|-----|-----|-----|-----|-----|-----|
| Wavelengths [nm] | 425 | 475 | 525 | 575 | 625 | 675 |
| Weights | 8 | 16 | 23 | 22 | 19 | 13 |



| Accessories | Mount | Length | ID |
|-------------|---------------------------|--------|---------|
| Adapter | CS-Mount Adapter | 5 mm | 25081 |
| | C-Mount / M42 x 1 Adapter | - | 1075817 |
| Ext. Tube | C-Mount | 5 mm | 39316 |
| | C-Mount | 8 mm | 39315 |
| | C-Mount | 10 mm | 39312 |

Get more information

Contact our local offices



Headquarter Germany

Jos. Schneider Optische Werke GmbH
Ringstraße 132
55543 Bad Kreuznach
☎ +49 671 601 205
✉ cs@schneiderkreuznach.com
www.schneiderkreuznach.com

Offices Worldwide

China

☎ +86 755 8832 1170
✉ shawn.liu@schneider-asiapacific.com

North America

☎ +1 800 645 7239 (East Coast)
☎ +1 800 228 1254 (West Coast)
✉ info@schneideroptics.com

Singapore

☎ +65 9488 0062
✉ thongv@schneiderkreuznach.com