



WAT-03U2

1/3" Compact, High Sensitivity, USB2.0, HD Color Camera





Top Highlights

- High Sensitivity
- High Frame Rate
- Selectable Output Size
- Compact
- USB Video Class
- USB Bus Power
- Various Function Settings
- Capable Updating F/W
- Confirmed EMC Test Standards

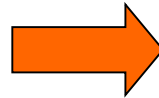


High Sensitivity

- Minimum Illumination 0.02lx (Approx. 10 times of WAT-01U2)



WAT-01U2



Approx.
10 times



WAT-03U2

※Photographing Environment: Illumination 0.1lx

(Camera Settings: Sutter Speed 1/30s, Gain 42dB)

- Setting max shutter speed (x64FRM(2.0s)) and max gain (72db) enables higher sensitivity.
(※Under Manual Exposure Control)

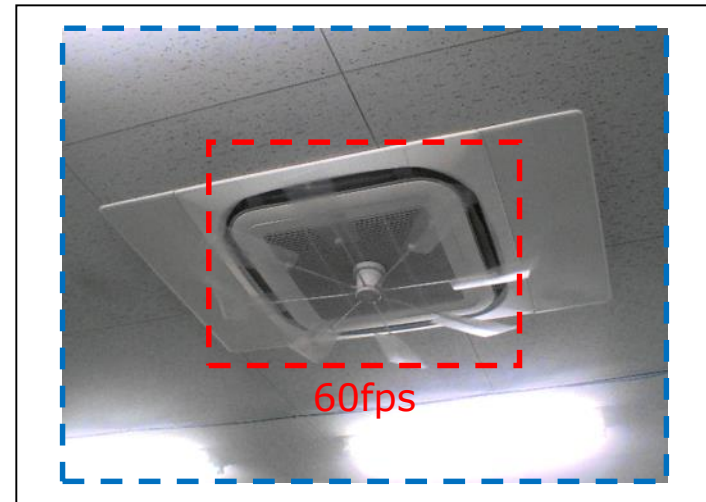


High Frame Rate

- Max frame rate 60fps enables smooth moving images.
(※Compressed Format: MJPG
Output Size: VGA or Quarter-VGA)



60fps



30fps

※In order to cut and output the central part of the screen,
the angle of view is different from other frame rates.



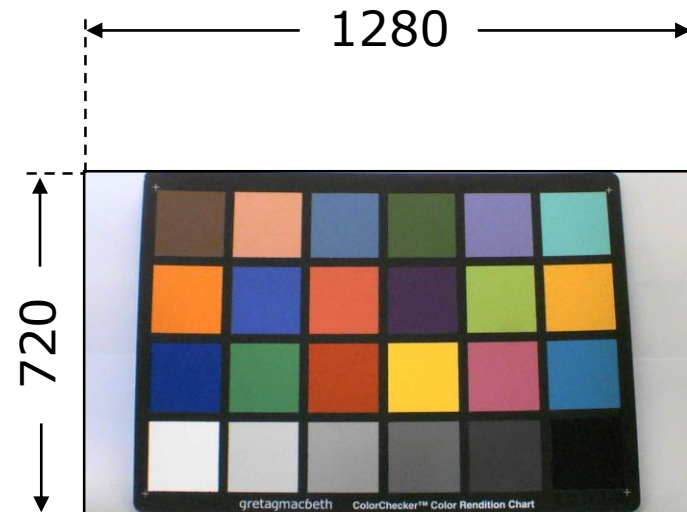
Selectable Output Size

- Selectable from 4 kinds of screen resolutions (2 kinds of aspect ratio)

Image Size (H x V)	Aspect Ratio	Resolution
1280 × 960	4:3	Quad-VGA
1280 × 720	16:9	HD 720p
640 × 480	4:3	VGA
320 × 240	4:3	Quarter-VGA



Aspect Ratio 4:3

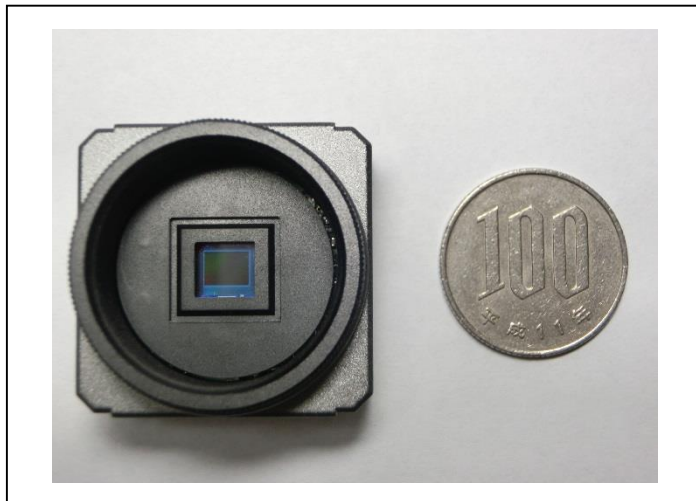


Aspect Ratio 16:9



Compact

- Compact Design
32(W) × 32(H) × 23(D) (mm)
- Light Weight
Approx. 35g
- Options (Sold Separately)
Camera Stand, Mount Adaptor and more



Other Highlights



For more information please contact: Watec Co., Ltd.

BOCK OPTRONICS INC.
14 Steinway Blvd., Unit 7
Toronto, Ontario M9W 6M6

Tel: (416) 674-2804
sales@bockoptronics.ca
www.bockoptronics.ca



2016/9/6

- USB Bus Power

Dispense with an External Power Source

- USB Video Class

Plug and Play

- Various Function Settings

Following function settings are changeable on requests.

Brightness	Contrast	Hue	Saturation	Sharpness	Gamma
WhiteBalance	BackLight	Gain	FlickerLessMode	Shutter	SlowShutter

- Capable Updating F/W

The latest F/W Updates & Downloads are available on our website. (<http://www.watec.co.jp/index.html>) (TBD)

- Confirmed EMC Test Standards

Acquisitions: FCC Part15 Class B / EN55032 / EN55024