

# WAT-2400S 1/2.8" Compact High Sensitivity Network Color Camera

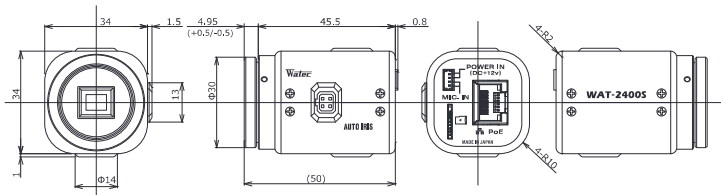
As small as WAT-902 series



## Key features

- Supporting microSD enables stand-alone recording without the network connection
- Video output quick start-up in 6 sec.
- Power-saving PoE : 1.92W/40mA DC+12V : 1.56W/130mA

## Dimensions



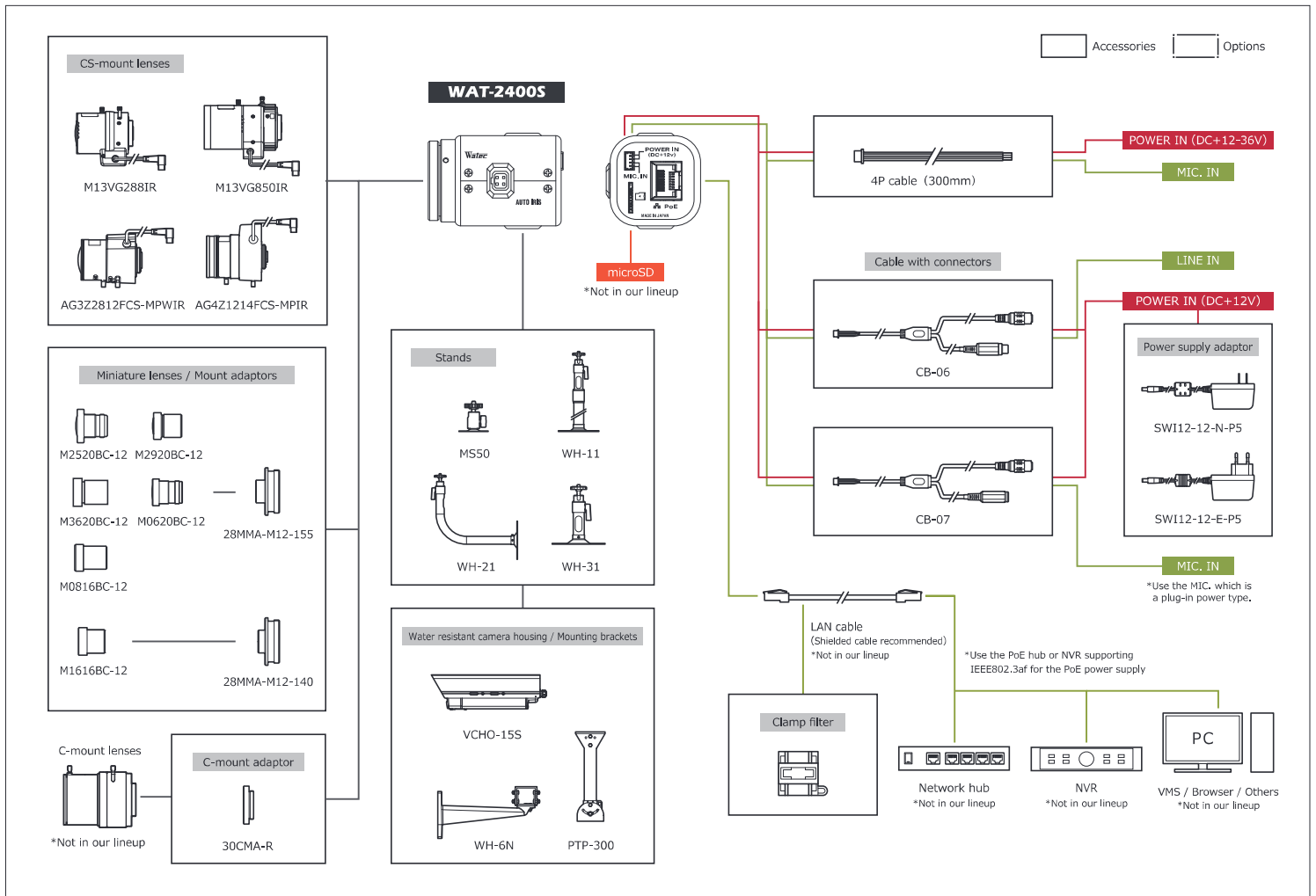
## Specifications

Pick-up element		1/2.8 inch BSI CMOS image sensor	
Number of effective pixels		1945(H) × 1097(V)	
Unit cell size		2.9µm(H) × 2.9µm(V)	
Imaging system		RGB primary color Bayer arrangement mosaic filter on chip	
Synchronizing system		Internal	
Scanning system		Progressive	
Output size		1920×1080, 1280×720, 800×600, 704×480, 704×400, 640×480, 640×360, 320×240	
Max. frame rate		30 fps	
Video compression		H.264, MJPEG	
Minimum illumination		0.007 lx F1.2 (AGC HIGH+72dB, Shutter=OFF)	
S/N		—	
Function settings		Browser	
AE mode	Fixed	1/30, 1/60, 1/120, 1/250, 1/500, 1/1000,	1/25, 1/50, 1/100, 1/200, 1/400, 1/800,
		1/2000, 1/4000, 1/8000, 1/15000,	1/1600, 1/3200, 1/6400, 1/12800,
	1/30000 (sec.) *1	1/25600 (sec.) *2	
	EI	1/30 - 1/30000 (sec.) *1	1/25 - 1/25600 (sec.) *2
	×32 - 1/30000 (sec.) *1 *3	×32 - 1/25600 (sec.) *2 *3	
White balance		ATW, PWB, MWB, PRESET (3000K, 5000K, 8000K)	
AGC	ON	0 - 72dB	
	OFF	0dB	
MGC		—	
Day/Night		—	
Noise reduction		3DNR OFF/ON (Level adjustable)	
Wide dynamic range		WDR OFF/ON (Level adjustable)	
Lens iris		DC	
Back light compensation		BLC, HSBC	
White blemish correction		ON	
Sharpness		Level adjustable	
Defog		OFF/ON (Level adjustable)	
Digital zoom		—	
Privacy mask		16 masks	
Mirror image		OFF, V-FLIP, H-FLIP, HV-FLIP	
Freeze		—	
Motion detection		OFF/ON 4 areas arbitrarily configurable	
Neg.image		—	
ONVIF		profile S	
Supported protocols		TCP/IP, UDP/IP, RTP(RTCP), RTSP, SNTP, HTTP, FTP, DHCP, DNS	
Interface		RJ45 (10BASE-T, 100BASE-TX), 4P Connector (MIC-IN, POWER IN), Auto iris, microSD (Recommended: SDHC / SDXC standard, MLC type, Speed Class CLASS 10 or more, Capacity of 128GB or less)	
Power supply		PoE +48V (IEEE802.3af), DC+12 - 36V *+12V is recommended for DC input	
Power consumption		1.92W/40mA (PoE +48V), 1.56W/130mA (DC+12V)	
Operating temperature		0 - +50°C	
Storage temperature		-30 - +70°C	
Operating / Storage humidity		95% RH or less (Without condensation)	
Lens mount		C5 mount (Back focus adjustable)	
Weight		Approx. 80g	
Accessories		4P cable, Hex. wrench, Clamp filter	

\*1: Frequency=60Hz \*2: Frequency=50Hz \*3: When using the Slow Shutter

\*ONVIF is a trademark of Onvif, Inc. \*microSD is a trademark of SD Association. SD, SDHC and SDXC (and logos) are trademarks of SD-3C, LLC.

\*XProtect is a registered trademark of Milestone Systems A/S.



For more information please contact:



**BOCK OPTRONICS INC.**

14 Steinway Blvd., Unit 7  
 Toronto, Ontario M9W 6M6

Tel: (416) 674-2804  
[sales@bockoptronics.ca](mailto:sales@bockoptronics.ca)  
[www.bockoptronics.ca](http://www.bockoptronics.ca)