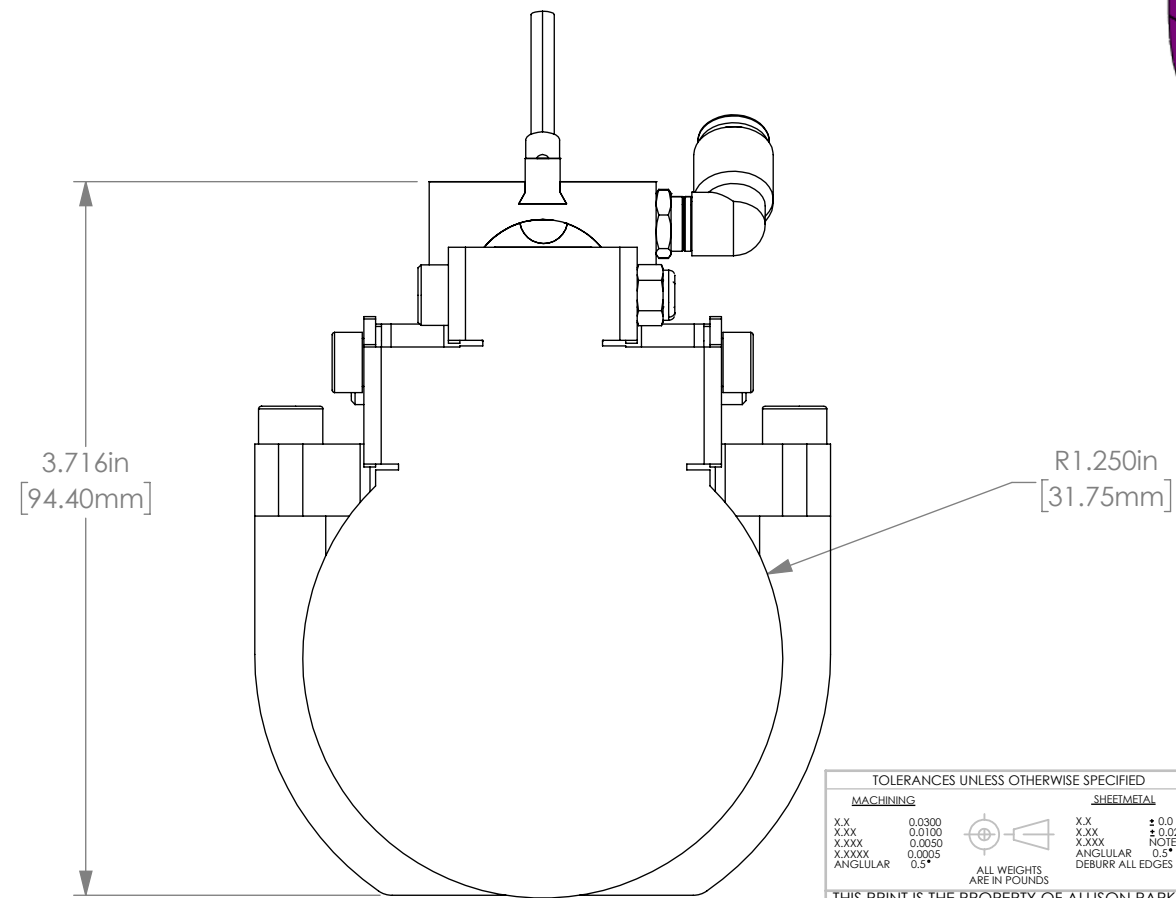
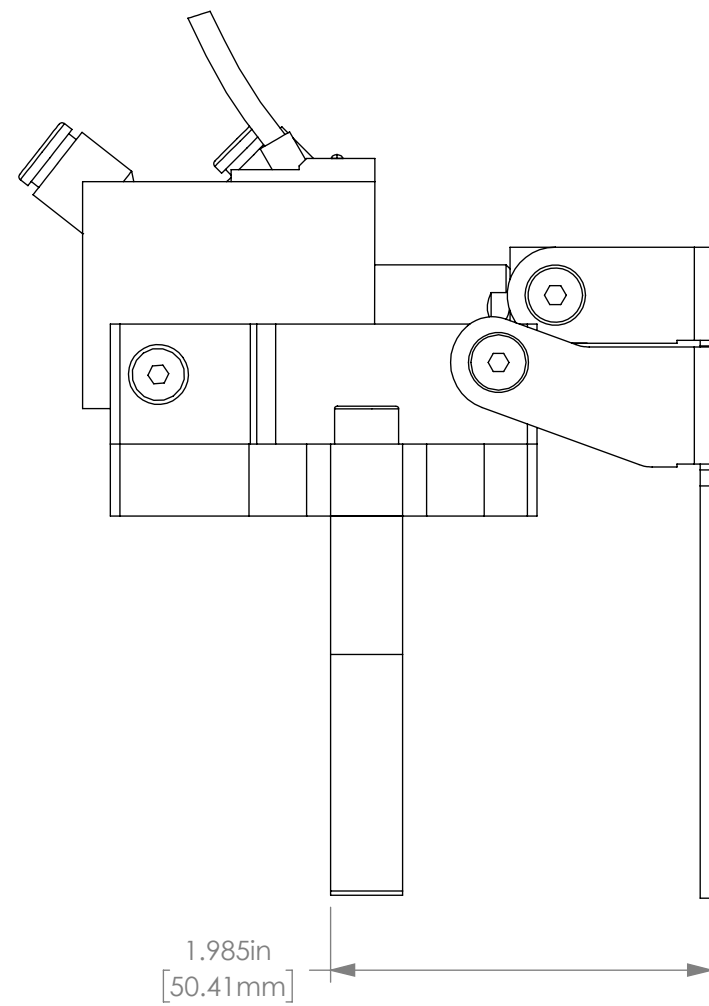
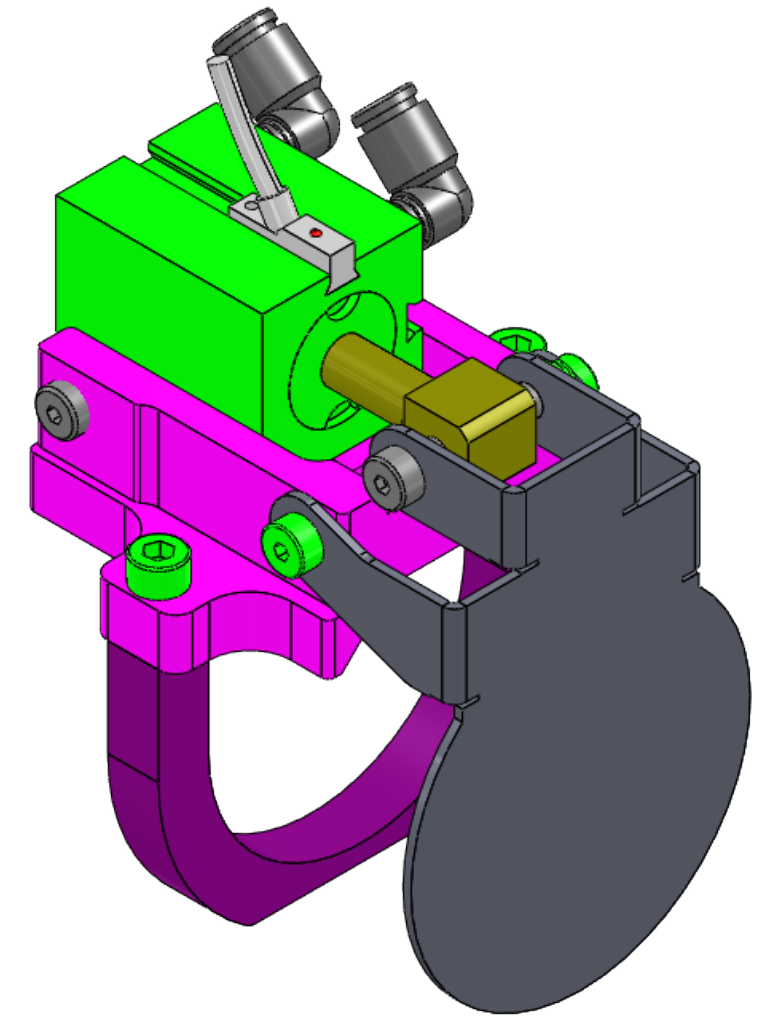


For more information please contact:

**BOCK OPTRONICS INC.**  
 14 Steinway Blvd., Unit 7  
 Toronto, Ontario M9W 6M6

Tel: (416) 674-2804  
[sales@bockoptronics.ca](mailto:sales@bockoptronics.ca)  
[www.bockoptronics.ca](http://www.bockoptronics.ca)



MACHINING		SHEETMETAL	
XX	0.0300	XX	± 0.0
XXX	0.0100	XXX	± 0.020
X.XXX	0.0050	XXXX	NOTED
X.XXXX	0.0025	ANGULAR	0.5°
ANGULAR	0.5°	DEBURK	ALL EDGES

THIS PRINT IS THE PROPERTY OF ALLISON PARK GROUP. THE INFORMATION CONTAINED HEREIN IS CONFIDENTIAL. IT IS NOT TRANSFERABLE. IT IS FURNISHED WITH THE CLEAR UNDERSTANDING THAT IT IS NOT TO BE TRACED, REPRODUCED OR USED IN ANY PROCESS OF MANUFACTURING WITHOUT WRITTEN PERMISSION FROM THE OWNER AND IS RETURNABLE UPON DEMAND. ANY INFRINGEMENT UPON THE PATENT RIGHTS SHOWN HEREIN, WHETHER IN PART OR WHOLE, WILL BE PROSECUTED.

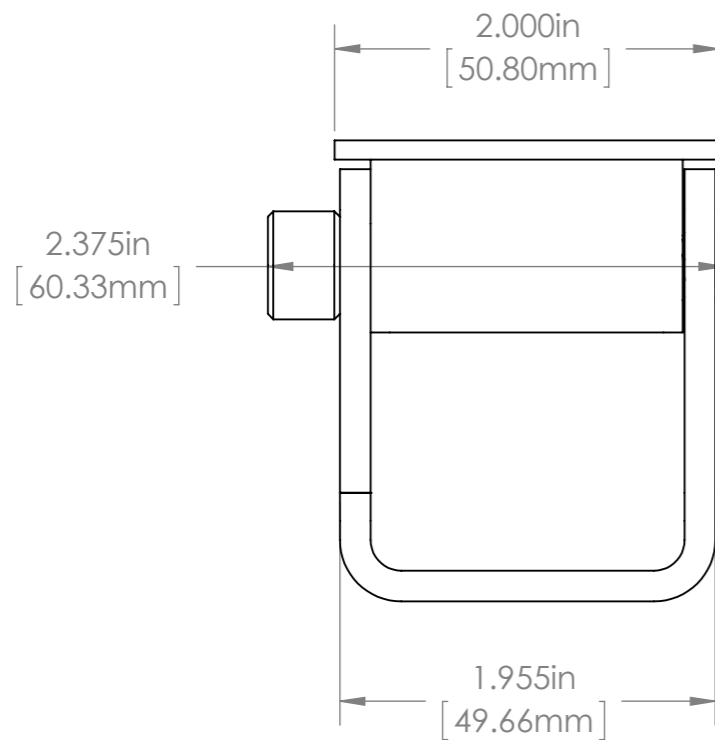
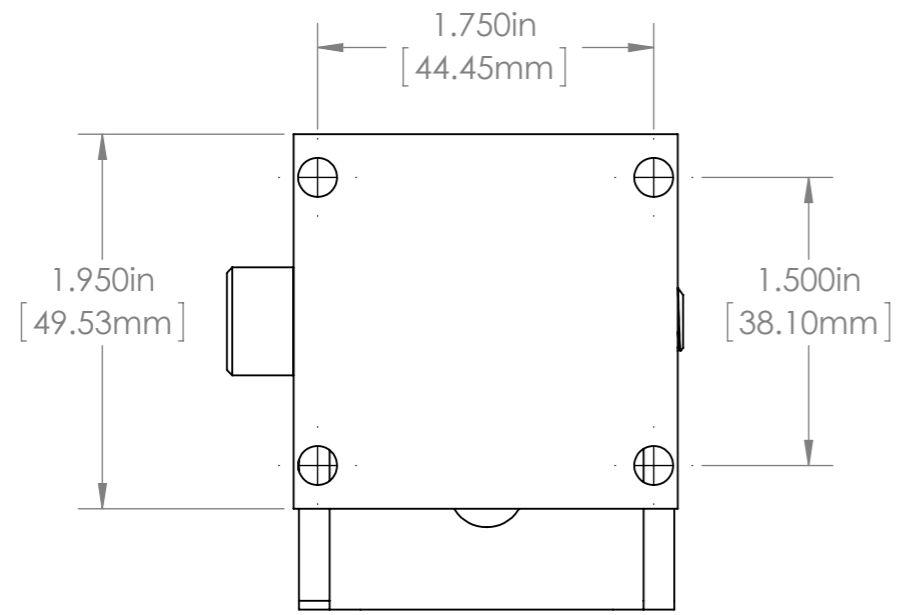
AS PART OF OUR POLICY OF CONTINUING DEVELOPMENT, ALLISON PARK GROUP RESERVES THE RIGHT TO ALTER SPECIFICATIONS WITHOUT PRIOR NOTICE.



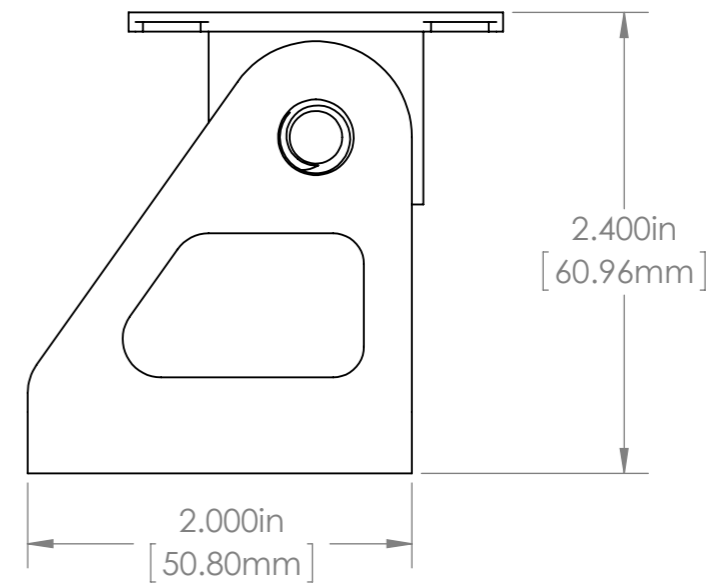
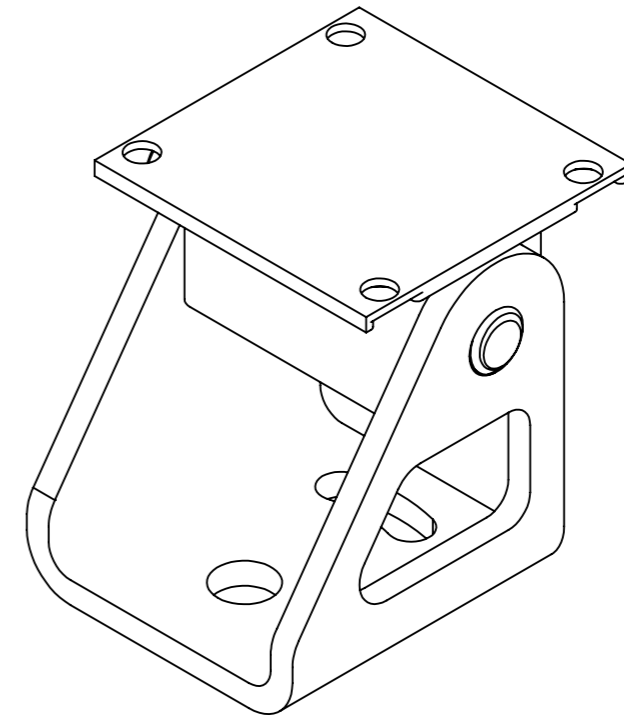
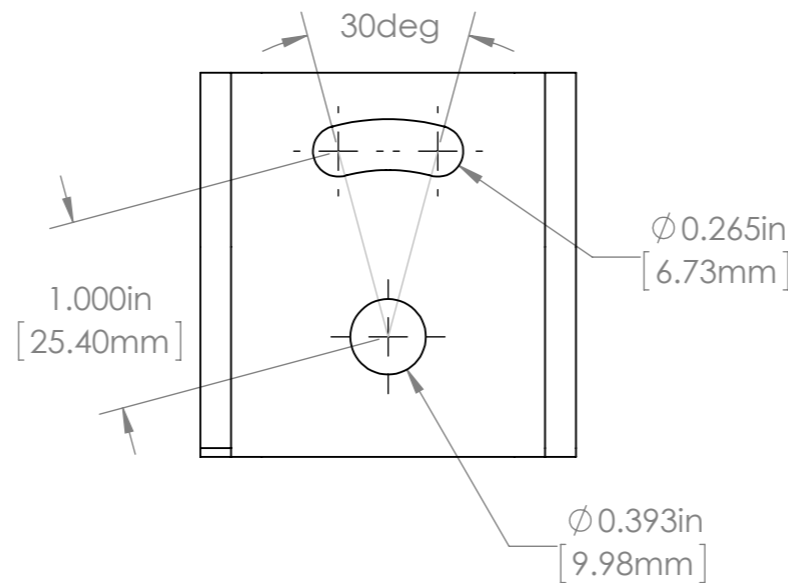
Allison Park Group, Inc. (APG)  
 4055 Alpha Drive  
 Allison Park, PA 15101 USA  
 Phone +1 (412) 487-8211  
 Fax +1 (412) 486-3157

DESCRIPTION: <b>SA-AC Shutter2 ASSY DIMS</b>			
MATERIAL:		APPROX. WEIGHT	
FINISH:			
DRAWN BY: SCHUBERT	DATE: 7/18/2018	SCALE: NTS	SHT-SIZE: B
CHECKED BY:	DATE:	PART NUMBER: <b>SA-AC</b>	REVISION: <b>A</b>
APPROVED BY:	DATE:	Sheet 1 of 1	

REV.	DESCRIPTION	DATE	REV. BY	APPR. BY
A	RELEASED FOR PRODUCTION			
REVISIONS				



MOUNTING PATTERN

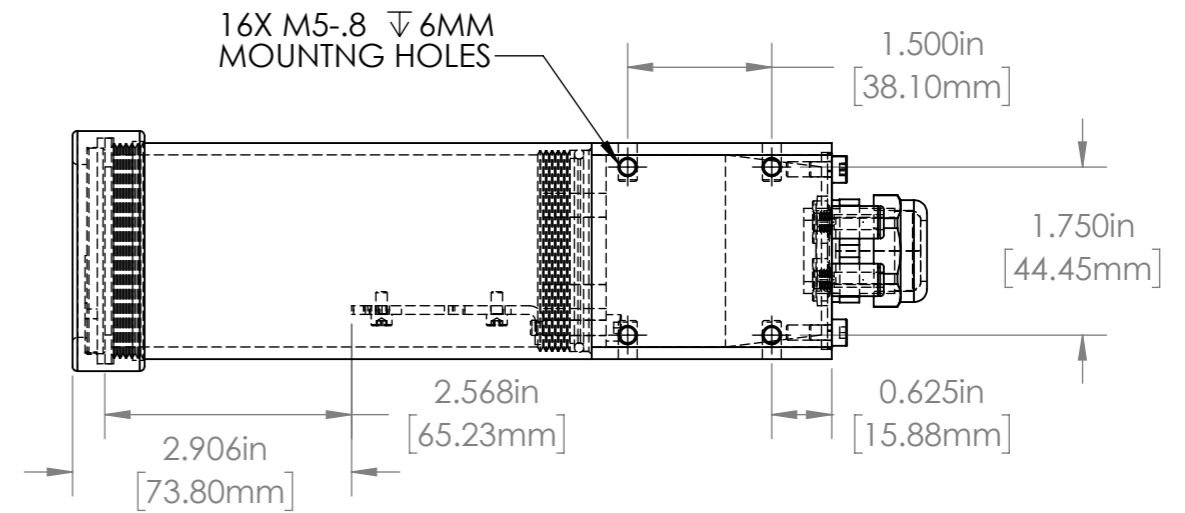
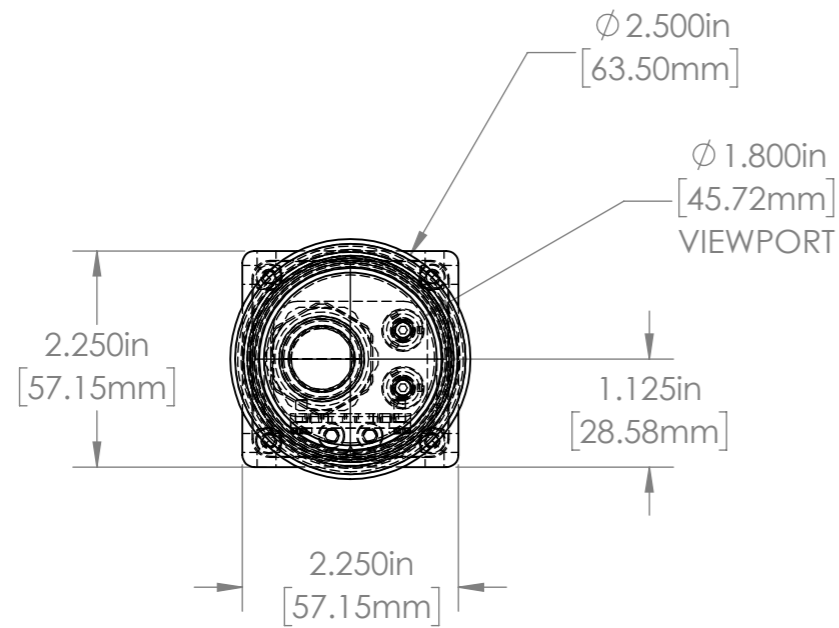
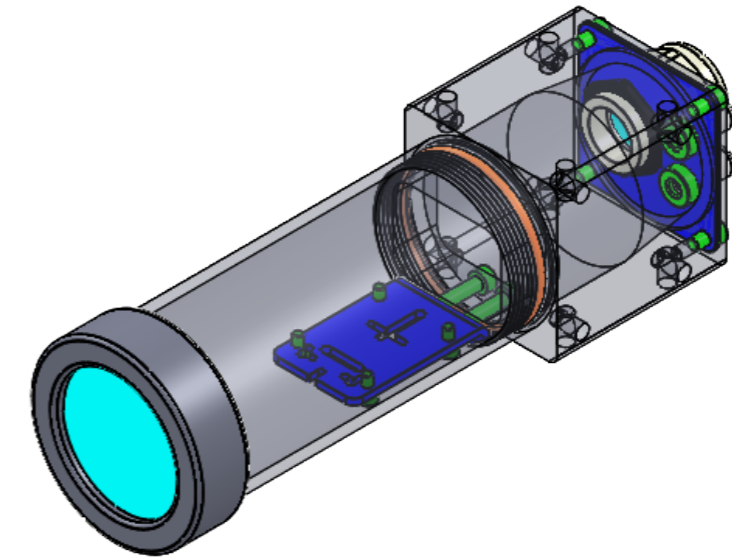
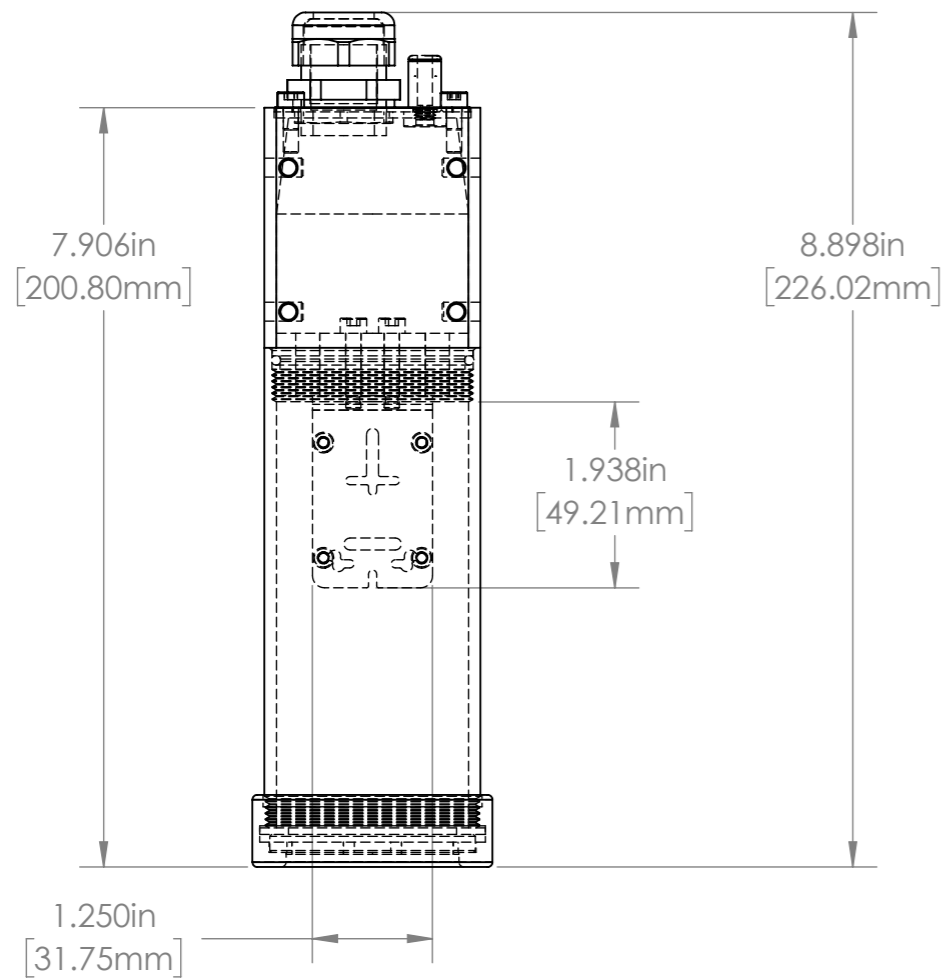


				UNLESS OTHERWISE SPECIFIED: DIMENSIONS ARE IN INCHES SURFACE FINISH: TOLERANCES: .000= +/- 0.005" .00= +/- 0.010"		FINISH: DEBUR AND BREAK SHARP EDGES		DO NOT SCALE DRAWING		REVISION	
				LINEAR:				Allison Park Group, Inc. (APG) 4055 Alpha Drive Allison Park, PA 15101 USA		This document is the property of APG and is considered company confidential. The information in this document is the property of APG and may not be used, reproduced, or distributed in whole or in part without the prior written permission of APG	
				DRAWN		NAME		SIGNATURE		DATE	
				OLSON						12/6/2013	
				CHK'D							
				APPV'D							
				MFG							
				Q.A							
				NOTES:							
				NO.		CHANGE		DATE		INIT.	
				MATERIAL:				DWG NO.		22C-PT1	
				WEIGHT:				SCALE: 1:1		A3	
								SHEET 1 OF 1			

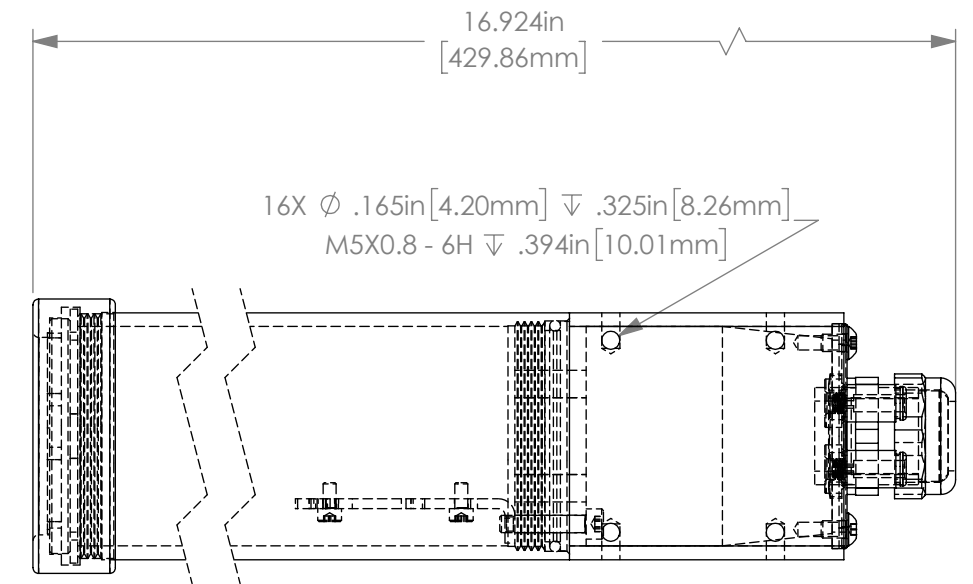
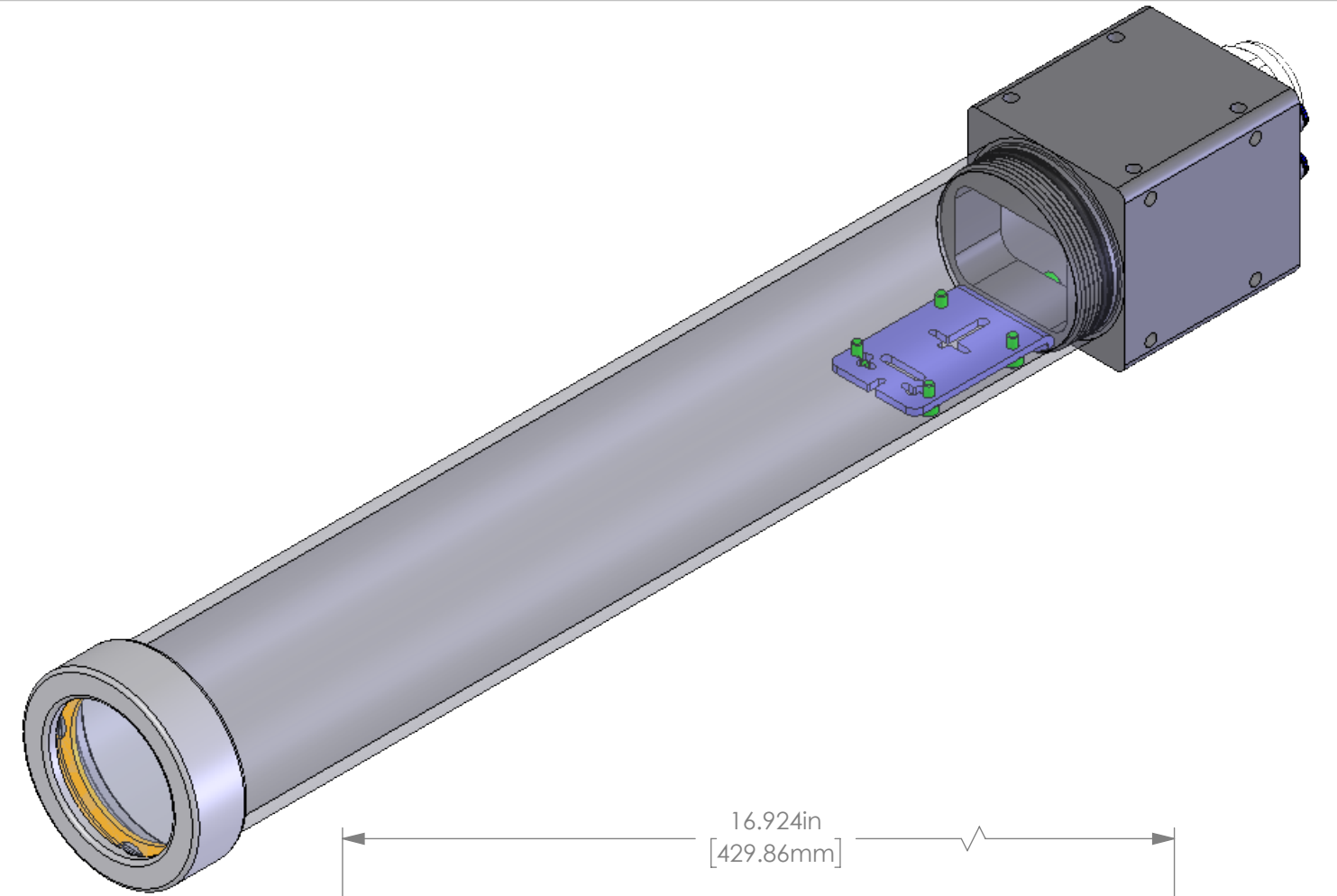
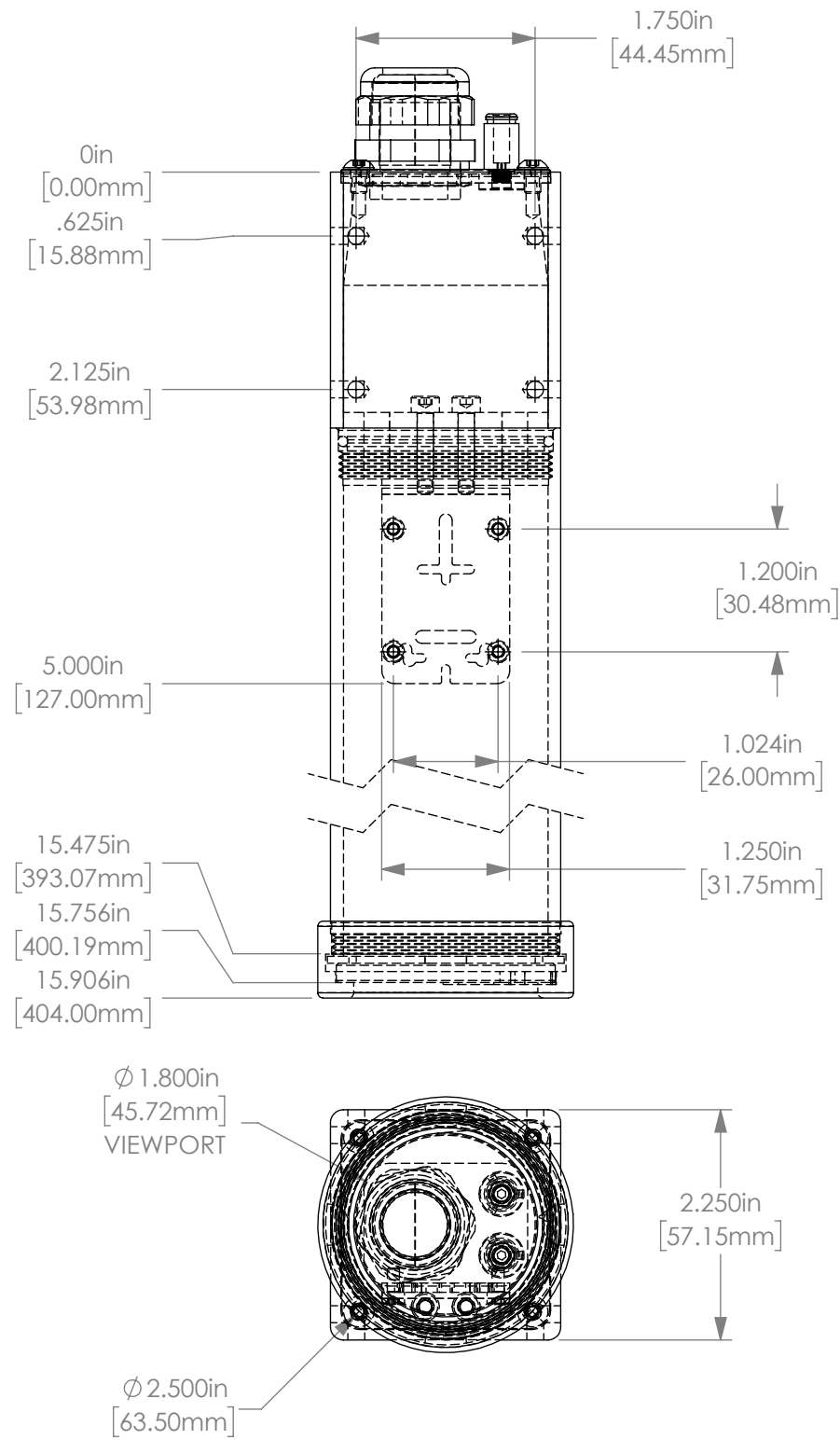
Phone +1 (412) 487-8211  
Fax +1 (412) 486-3157  
www.apgvision.com

22C-PT1 (Pan & Tilt)

22C-PT1



				UNLESS OTHERWISE SPECIFIED: DIMENSIONS ARE IN INCHES SURFACE FINISH: TOLERANCES: .000= +/- 0.005" .00= +/- 0.010"		FINISH: DEBUR AND BREAK SHARP EDGES		Allison Park Group, Inc. (APG) 4055 Alpha Drive Allison Park, PA 15101 USA		DO NOT SCALE DRAWING		REVISION	
				LINEAR:				Phone +1 (412) 487-8211 Fax +1 (412) 486-3157		This document is the property of APG and is considered company confidential. The information in this document is the property of APG and may not be used, reproduced, or distributed in whole or in part without the prior written permission of APG			
				DRAWN		SIGNATURE		www.apgvision.com		TITLE: 22C-AS (Universal, Acrylic, 5in brl)			
				AW				MATERIAL:		DWG NO. 22C-AS ASSY			
				CHK'D				WEIGHT:		SCALE: 1:2			
				APPV'D						SHEET 1 OF 1			
				MFG						A3			
				Q.A									
				NOTES:									
NO.	CHANGE	DATE	INIT.										



TOLERANCES UNLESS OTHERWISE SPECIFIED			
MACHINING	SHEETMETAL		
X.X	0.0300	X.X	± 0.0
X.XX	0.0100	X.XX	± 0.020
X.XXX	0.0050	X.XXX	NOTED
X.XXXX	0.0025	ANGULAR	0.5°
ANGULAR	0.5°	DEBURR	ALL EDGES

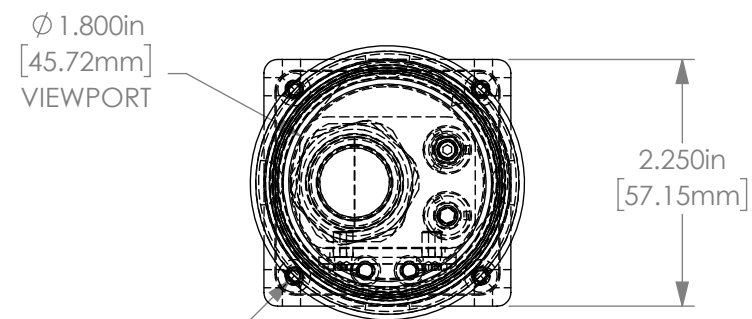
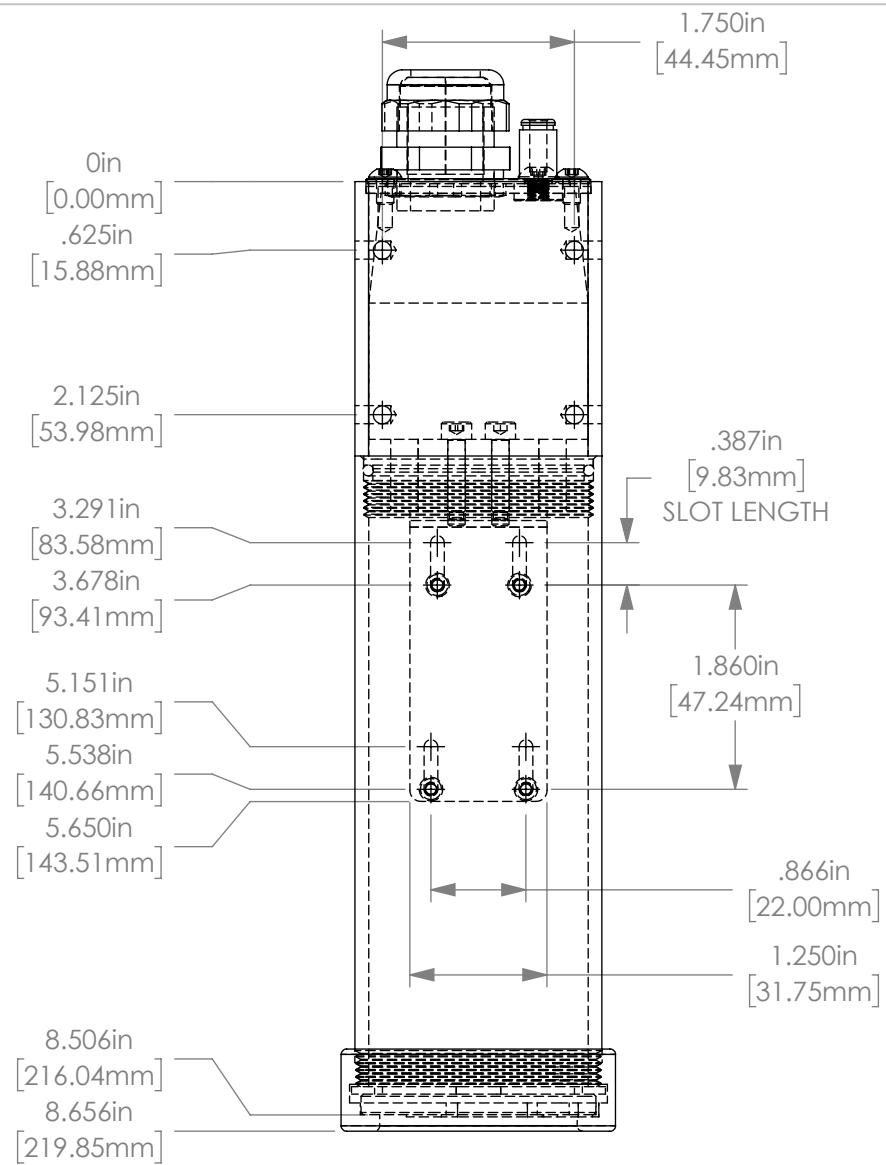
THIS PRINT IS THE PROPERTY OF ALLISON PARK GROUP. THE INFORMATION CONTAINED HEREIN IS CONFIDENTIAL. IT IS NOT TRANSFERABLE. IT IS FURNISHED WITH THE CLEAR UNDERSTANDING THAT IT IS NOT TO BE TRACED, REPRODUCED OR USED IN ANY PROCESS OF MANUFACTURING WITHOUT WRITTEN PERMISSION FROM THE OWNER AND IS RETURNABLE UPON DEMAND. ANY INFRINGEMENT UPON THE PATENT RIGHTS SHOWN HEREIN, WHETHER IN PART OR WHOLE, WILL BE PROSECUTED.

AS PART OF OUR POLICY OF CONTINUING DEVELOPMENT, ALLISON PARK GROUP RESERVES THE RIGHT TO ALTER SPECIFICATIONS WITHOUT PRIOR NOTICE.

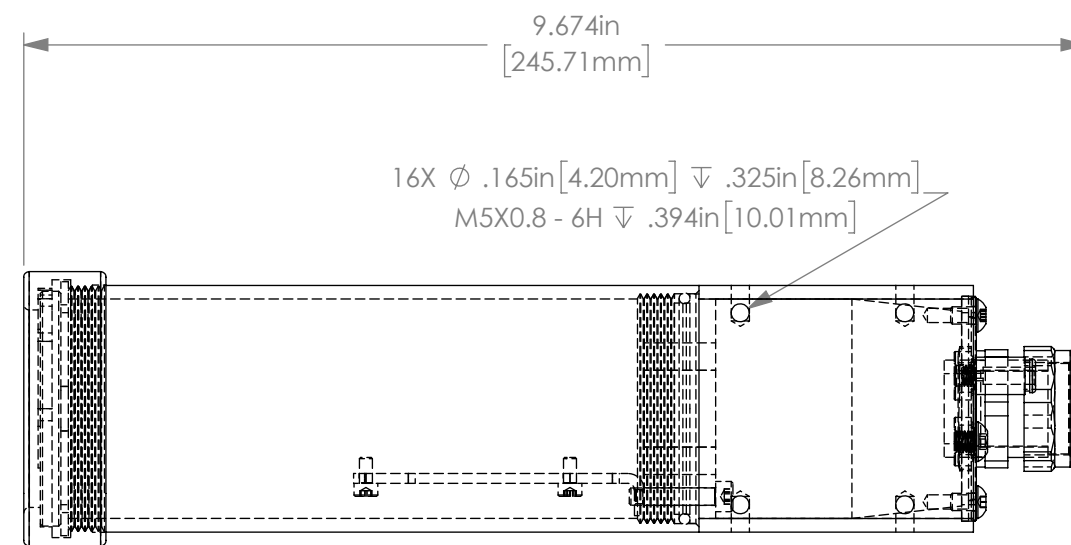
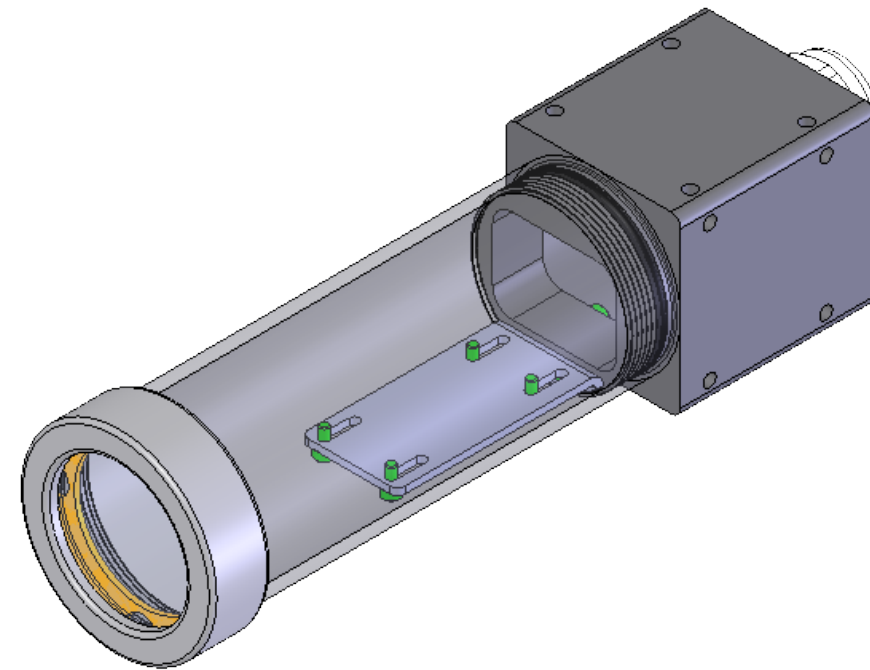


Allison Park Group, Inc. (APG)  
4055 Alpha Drive  
Allison Park, PA 15101 USA  
Phone +1 (412) 487-8211  
Fax +1 (412) 486-3157

DESCRIPTION: <b>22C-AO ASSY</b>			
MATERIAL:		APPROX. WEIGHT 0.782	
FINISH:			
DRAWN BY: AW	DATE: 1/29/2018	SCALE: NTS	SHT-SIZE: B
CHECKED BY:	DATE:	PART NUMBER: <b>22C-AO</b>	REVISION: <b>A</b>
APPROVED BY:	DATE:	Sheet 1 of 1	



Ø 2.500in  
[63.50mm]



TOLERANCES UNLESS OTHERWISE SPECIFIED		SHEETMETAL	
<b>MACHINING</b>			
XX	0.0300	XX	± 0.0
X.XX	0.0100	X.XX	± 0.020
X.XXX	0.0050	X.XXX	NOTED
X.XXXX	0.0025	ANGULAR	0.5°
ANGULAR	0.5°	DEBURR	ALL EDGES

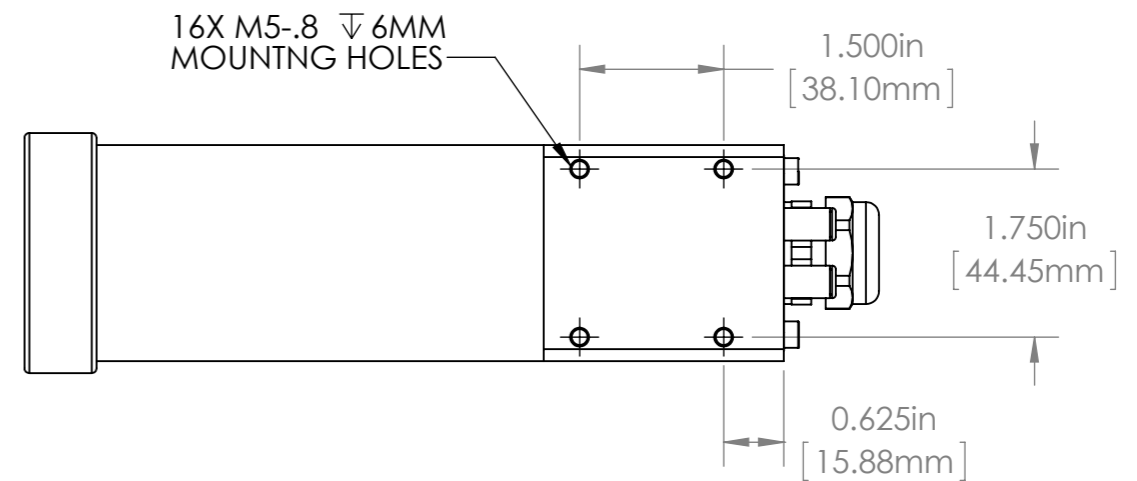
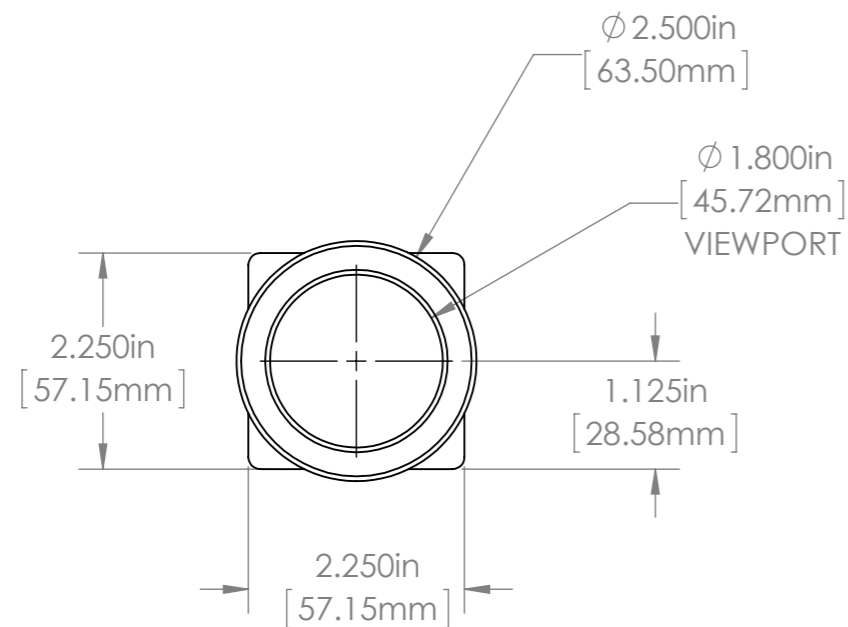
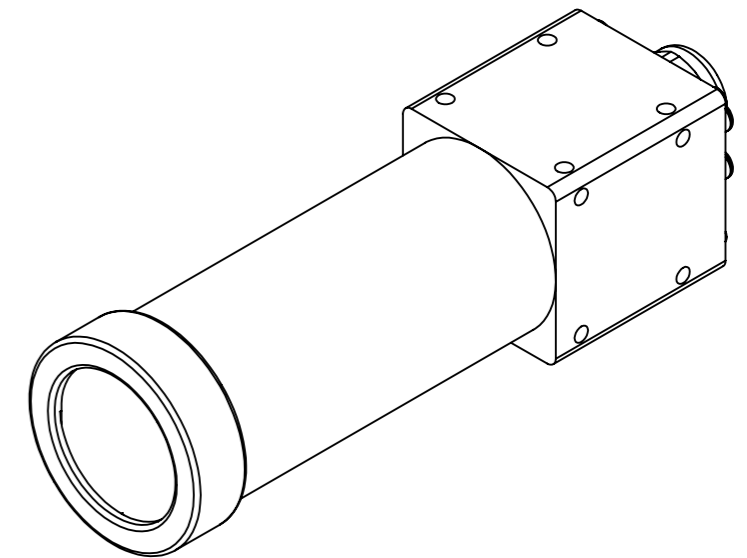
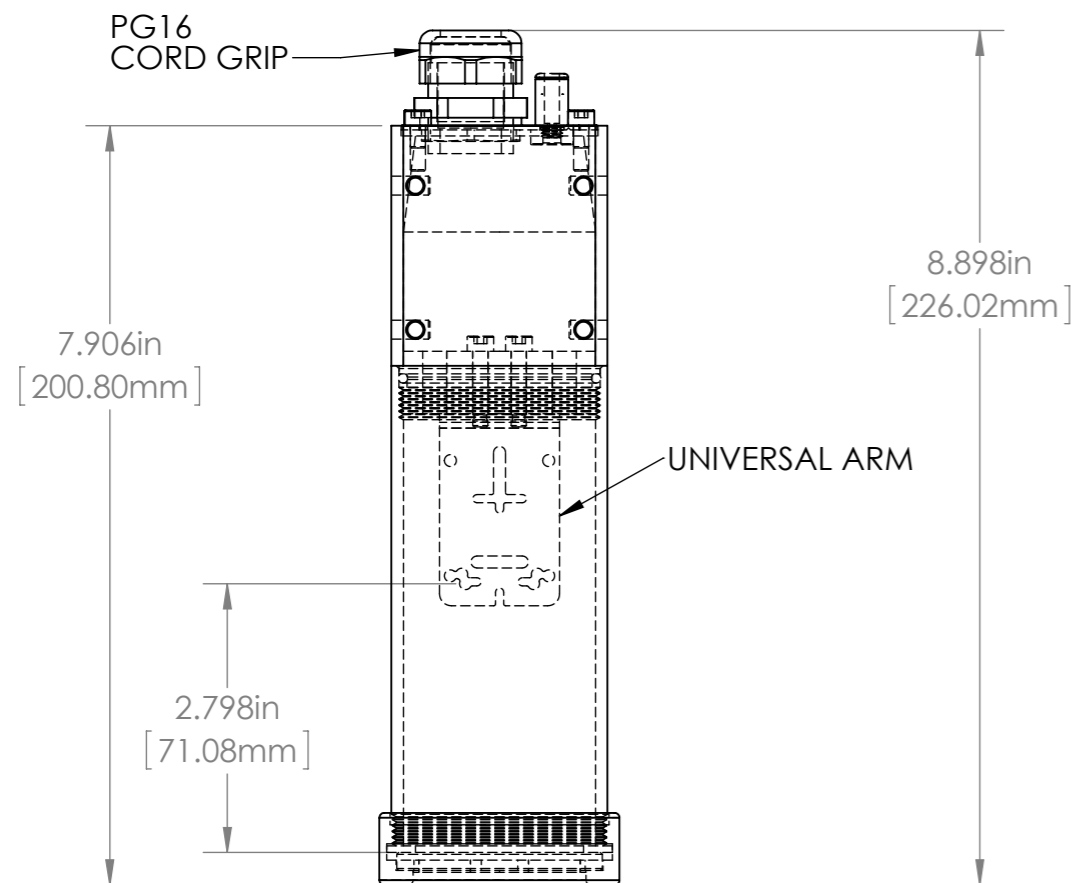
THIS PRINT IS THE PROPERTY OF ALLISON PARK GROUP. THE INFORMATION CONTAINED HEREIN IS CONFIDENTIAL. IT IS NOT TRANSFERABLE. IT IS FURNISHED WITH THE CLEAR UNDERSTANDING THAT IT IS NOT TO BE TRACED, REPRODUCED OR USED IN ANY PROCESS OF MANUFACTURING WITHOUT WRITTEN PERMISSION FROM THE OWNER AND IS RETURNABLE UPON DEMAND. ANY INFRINGEMENT UPON THE PATENT RIGHTS SHOWN HEREIN, WHETHER IN PART OR WHOLE, WILL BE PROSECUTED.

AS PART OF OUR POLICY OF CONTINUING DEVELOPMENT, ALLISON PARK GROUP RESERVES THE RIGHT TO ALTER SPECIFICATIONS WITHOUT PRIOR NOTICE.

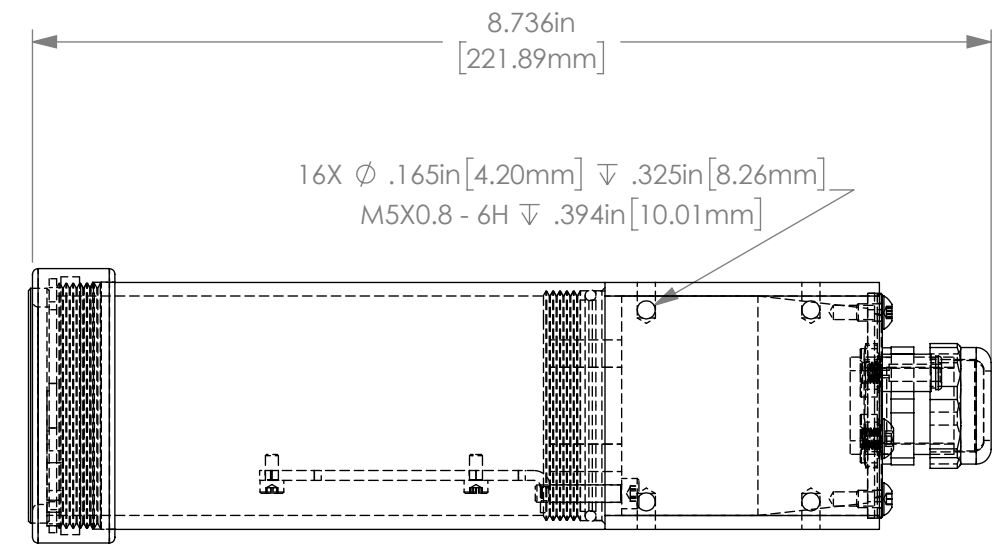
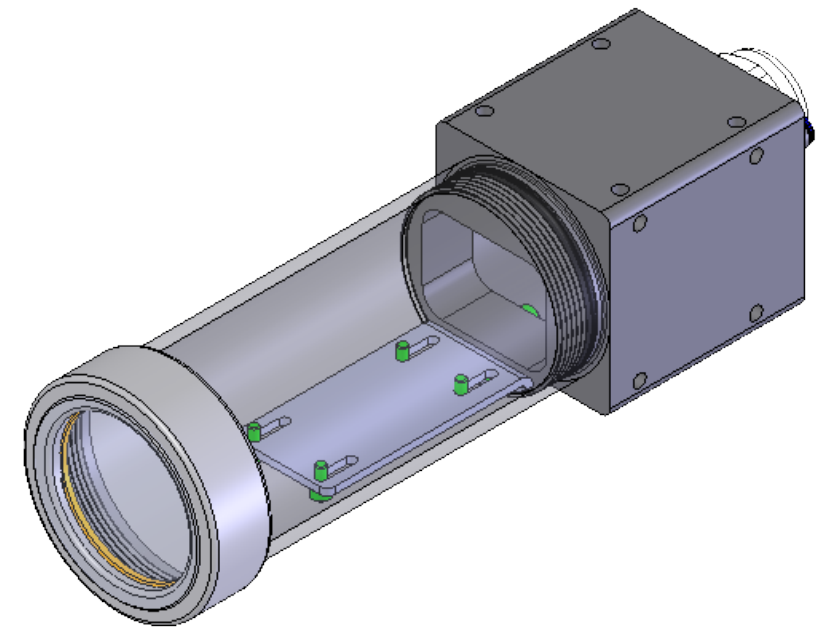
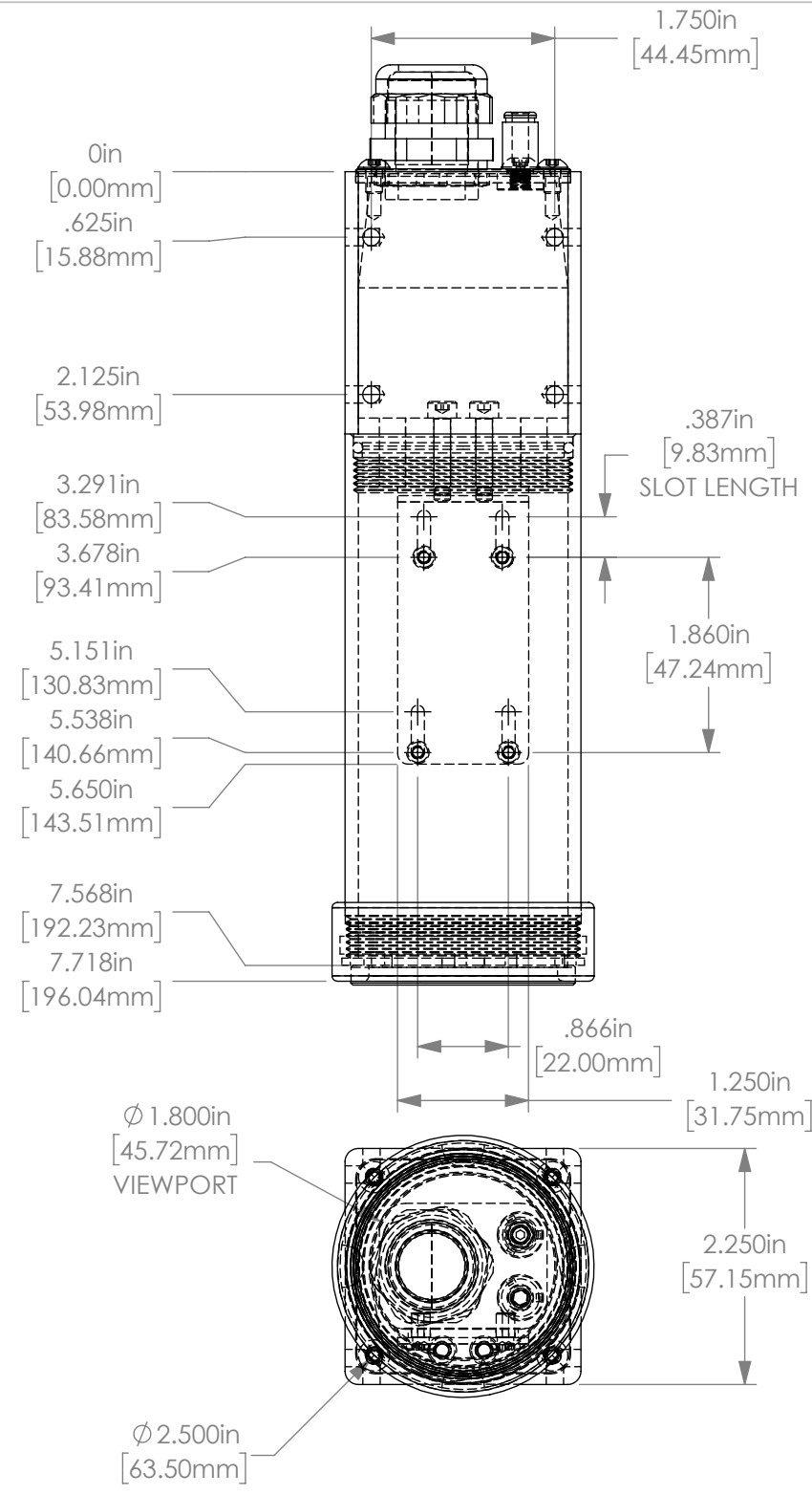


Allison Park Group, Inc. (APG)  
4055 Alpha Drive  
Allison Park, PA 15101 USA  
Phone +1 (412) 487-8211  
Fax +1 (412) 486-3157

DESCRIPTION:			
<b>22C-AL ASSY</b>			
MATERIAL:		APPROX. WEIGHT	
		0.563	
FINISH:			
DRAWN BY:	DATE:	SCALE:	SHT-SIZE:
AW	1/29/2018	NTS	B
CHECKED BY:	DATE:	PART NUMBER:	REVISION:
		22C-AL	A
APPROVED BY:	DATE:	Sheet 1 of 1	



				UNLESS OTHERWISE SPECIFIED: DIMENSIONS ARE IN INCHES SURFACE FINISH: TOLERANCES: .000= +/- 0.005" .00= +/- 0.010"		FINISH: CLEAR HARDCOAT ANODIZE		Allison Park Group, Inc. (APG) 4055 Alpha Drive Allison Park, PA 15101 USA		DO NOT SCALE DRAWING		REVISION	
				LINEAR:		DEBUR AND BREAK SHARP EDGES		Phone +1 (412) 487-8211 Fax +1 (412) 486-3157		This document is the property of APG and is considered company confidential. The information in this document is the property of APG and may not be used, reproduced, or distributed in whole or in part without the prior written permission of APG		TITLE:	
				DRAWN SCHUBERT		SIGNATURE		www.apgvision.com		22C-AK (Universal, gls, 5 in brl)		DWG NO.	
				CHK'D		DATE 1/4/2013		MATERIAL: ALUMINUM 6061 T6		22C-AK ASSY DIMS		A3	
				APPVD				WEIGHT:		SCALE: 1:2		SHEET 1 OF 1	
				MFG									
				Q.A									
				NOTES:									
NO.		CHANGE		DATE		INIT.							



TOLERANCES UNLESS OTHERWISE SPECIFIED	
MACHINING	SHEETMETAL
X.X	0.0300
X.XX	0.0100
X.XXX	0.0050
X.XXXX	0.0025
ANGULAR	0.5°
	± 0.020
	NOTED
	ANGULAR 0.5°
	DEBURR ALL EDGES

THIS PRINT IS THE PROPERTY OF ALLISON PARK GROUP. THE INFORMATION CONTAINED HEREIN IS CONFIDENTIAL. IT IS NOT TRANSFERABLE. IT IS FURNISHED WITH THE CLEAR UNDERSTANDING THAT IT IS NOT TO BE TRACED, REPRODUCED OR USED IN ANY PROCESS OF MANUFACTURING WITHOUT WRITTEN PERMISSION FROM THE OWNER AND IS RETURNABLE UPON DEMAND. ANY INFRINGEMENT UPON THE PATENT RIGHTS SHOWN HEREIN, WHETHER IN PART OR WHOLE, WILL BE PROSECUTED.

AS PART OF OUR POLICY OF CONTINUING DEVELOPMENT, ALLISON PARK GROUP RESERVES THE RIGHT TO ALTER SPECIFICATIONS WITHOUT PRIOR NOTICE.



Allison Park Group, Inc. (APG)  
4055 Alpha Drive  
Allison Park, PA 15101 USA  
Phone +1 (412) 487-8211  
Fax +1 (412) 486-3157

DESCRIPTION: <b>22C-AH ASSY</b>			
MATERIAL:		APPROX. WEIGHT 0.540	
FINISH:			
DRAWN BY: AW	DATE: 1/26/2018	SCALE: NTS	SHT-SIZE: B
CHECKED BY:	DATE:	PART NUMBER:	REF. NUMBER:
APPROVED BY:	DATE:	<b>22C-AH</b>	REVISION: <b>A</b>

4

3

2

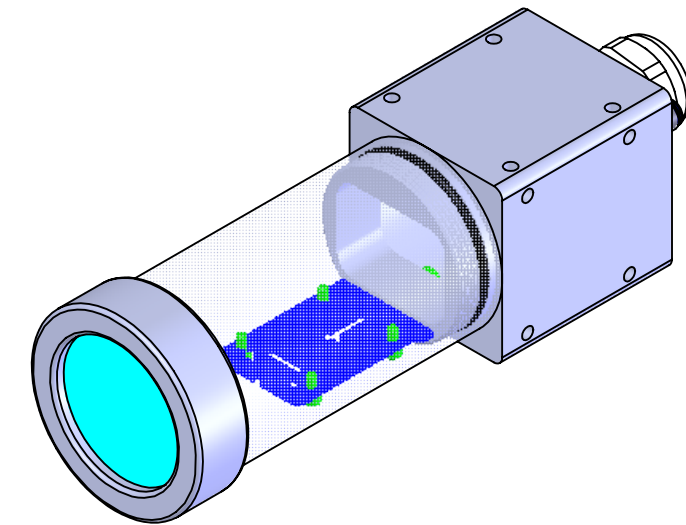
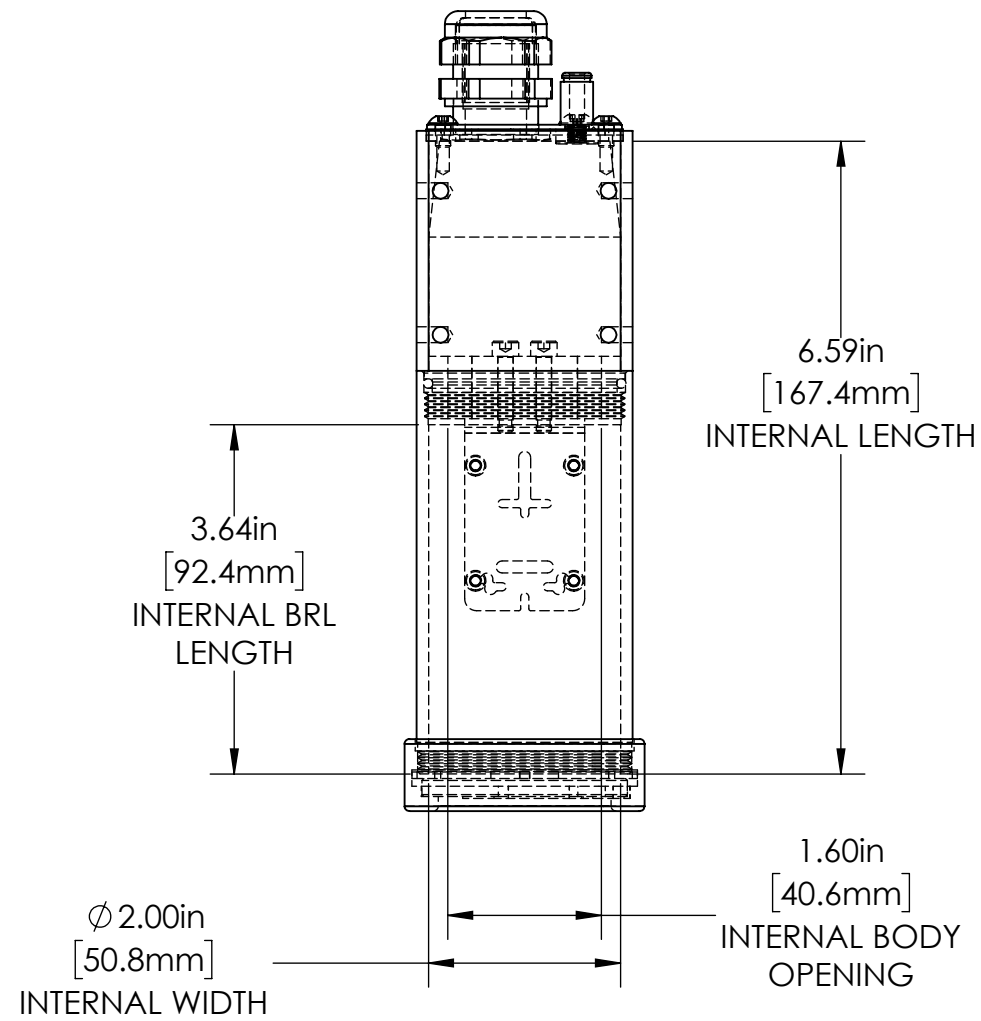
1

REVISIONS

ZONE	REV.	DESCRIPTION	DATE	APPROVED
	A		7/30/2019	

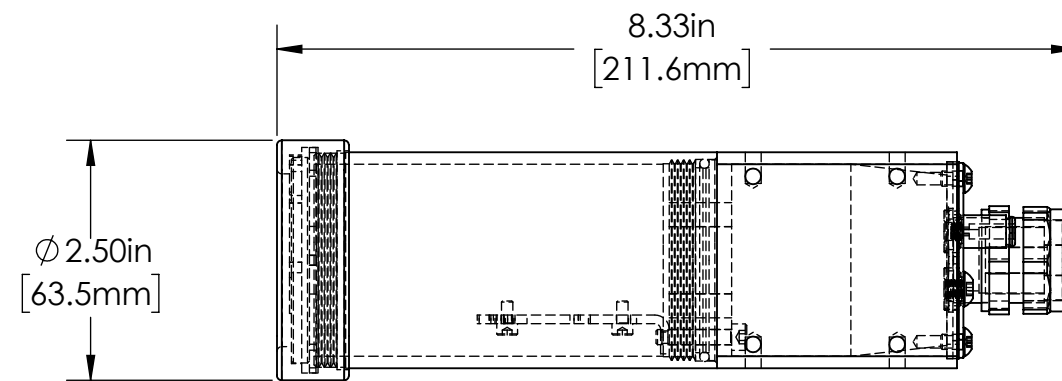
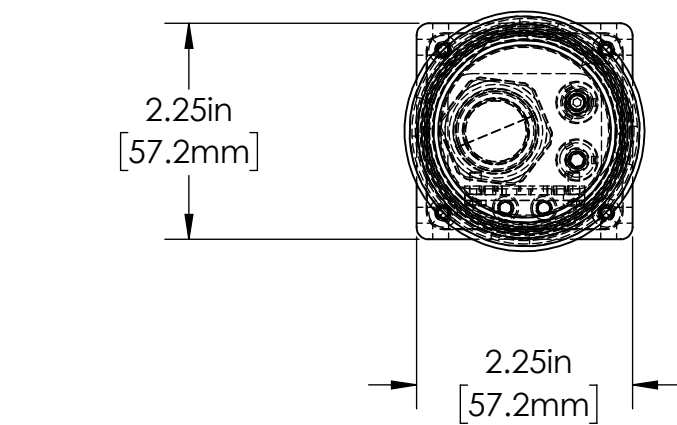
B

B



A

A



TOLERANCES UNLESS OTHERWISE SPECIFIED

MACHINING		SHEET METAL	
X.X	0.0250"	HOLE TO HOLE (SAME SURFACE)	
X.XX	0.0100"	X.X	0.030"
X.XXX	0.0050"	X.XX	0.010"
X.XXXX	0.0005"	X.XXX	0.005"
ANGULAR	0.5°	HOLE TO FOLDED EDGE	
DEBURR ALL		X.X	0.035"
		X.XX	0.025"
		X.XXX	0.015"
		FOLD TO FOLD	
		X.X	0.045"
		X.XX	0.035"
		X.XXX	0.020"
		ANGULAR 1.0°	



THIS PRINT IS THE PROPERTY OF ALLISON PARK GROUP. THE INFORMATION CONTAINED HEREIN IS CONFIDENTIAL. IT IS NOT TRANSFERABLE. IT IS FURNISHED WITH THE CLEAR UNDERSTANDING THAT IT IS NOT TO BE TRACED, REPRODUCED OR USED IN ANY PROCESS OF MANUFACTURING WITHOUT WRITTEN PERMISSION FROM THE OWNER AND IS RETURNABLE UPON DEMAND. ANY INFRINGEMENT UPON THE PATENT RIGHTS SHOWN HEREIN, WHETHER IN PART OR WHOLE, WILL BE PROSECUTED.

AS PART OF OUR POLICY OF CONTINUING DEVELOPMENT, ALLISON PARK GROUP RESERVES THE RIGHT TO ALTER SPECIFICATIONS WITHOUT PRIOR NOTICE.



Allison Park Group, Inc (APG)  
4055 Alpha Drive  
Allison Park, PA 15101 USA  
Phone +1 (412) 487-8211  
apgvision.com

DESCRIPTION:  
**22C-AB ENCLOSURE WITH UNIVERSAL ARM**

MATERIAL:  
**SEE BOM**

FINISH: **SEE BOM**

DRAWN BY:	DATE:	SCALE:	SHT-SIZE:	APPROX. WEIGHT
KENNEDY	8/8/2019	1:2	B	0.4801
CHECKED BY:	DATE:	PART NUMBER:	REVISION	
		22C-AB	A	

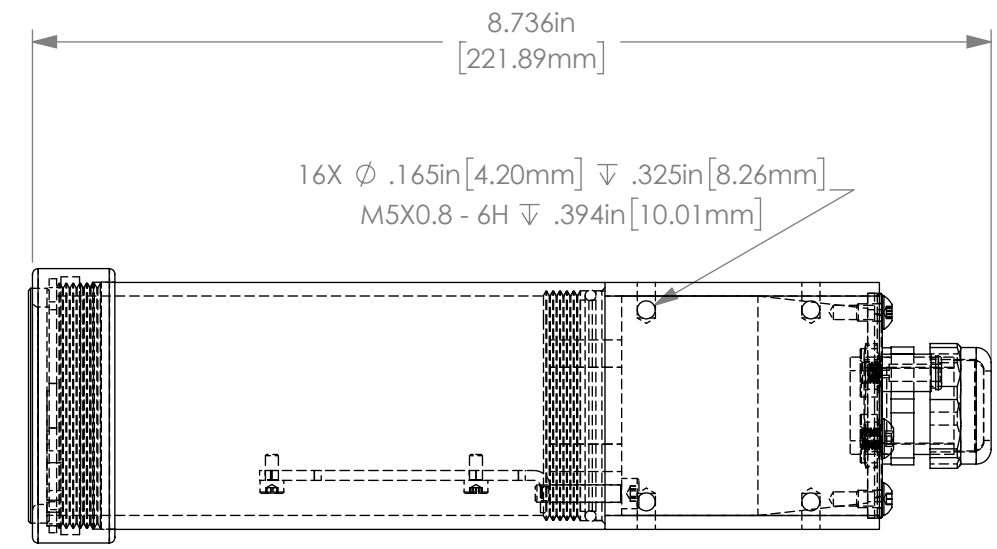
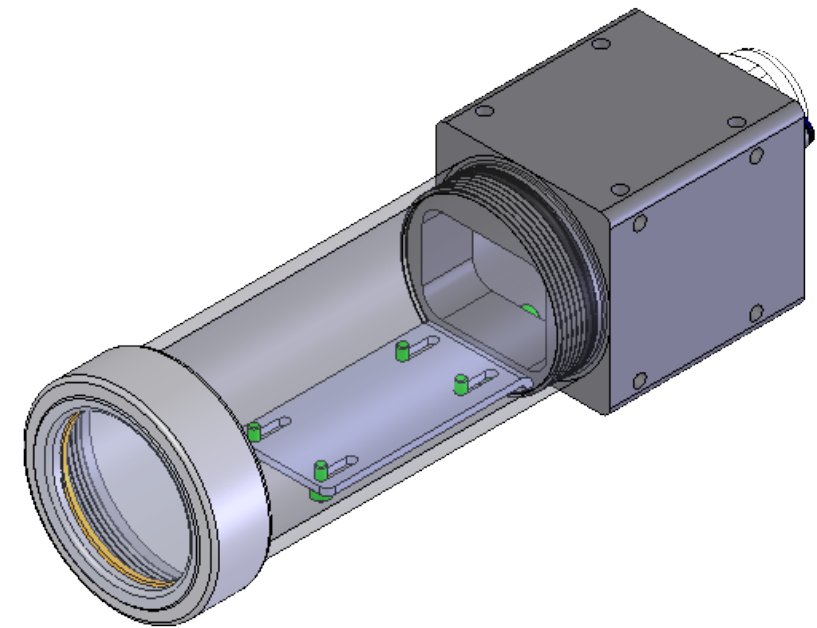
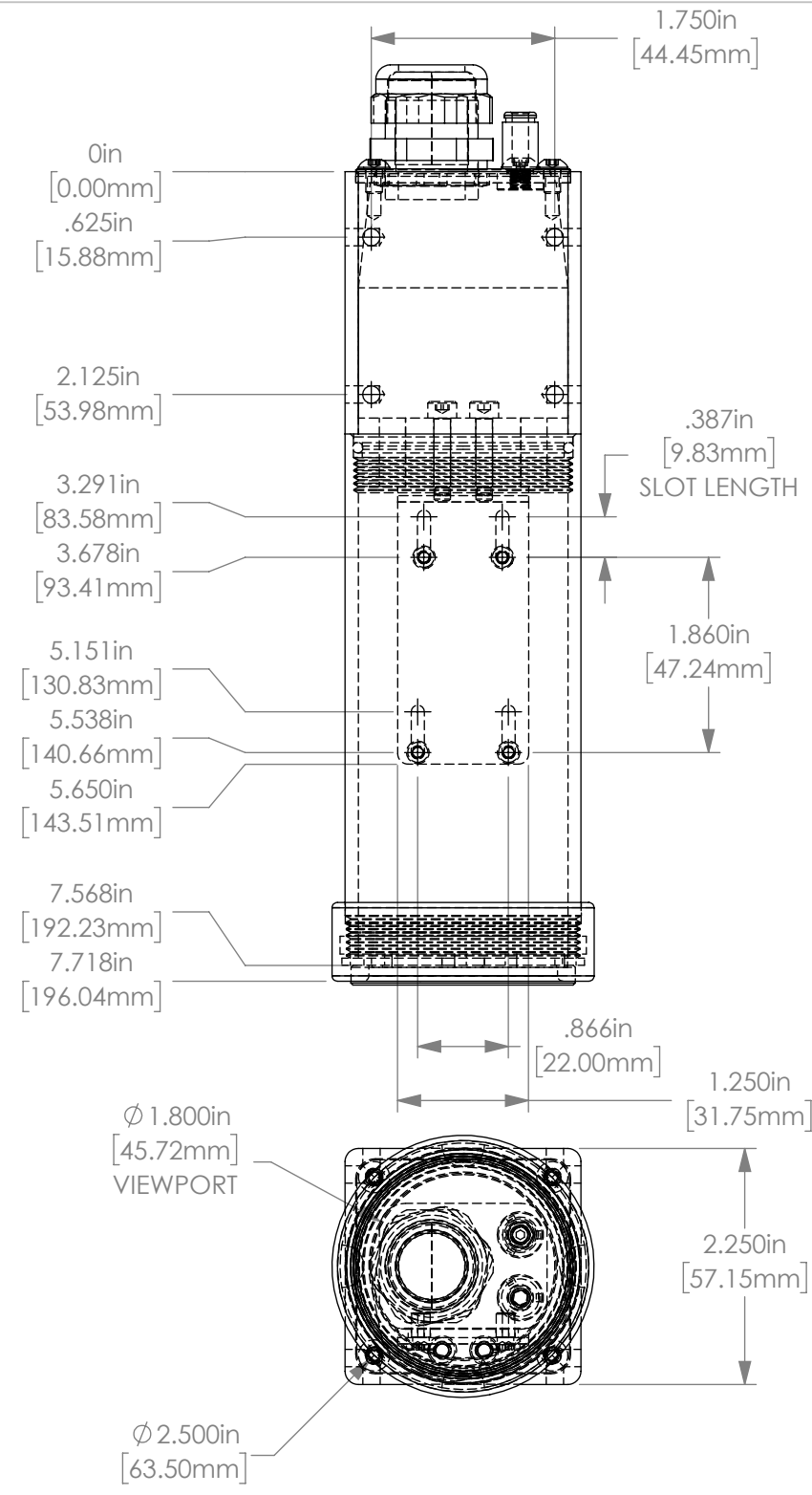
4

3

2

1





TOLERANCES UNLESS OTHERWISE SPECIFIED	
MACHINING	SHEETMETAL
X.X	0.0300
X.XX	0.0100
X.XXX	0.0050
X.XXXX	0.0025
ANGULAR	0.5°
	± 0.0
	± 0.020
	NOTED
	ANGULAR 0.5°
	DEBURR ALL EDGES

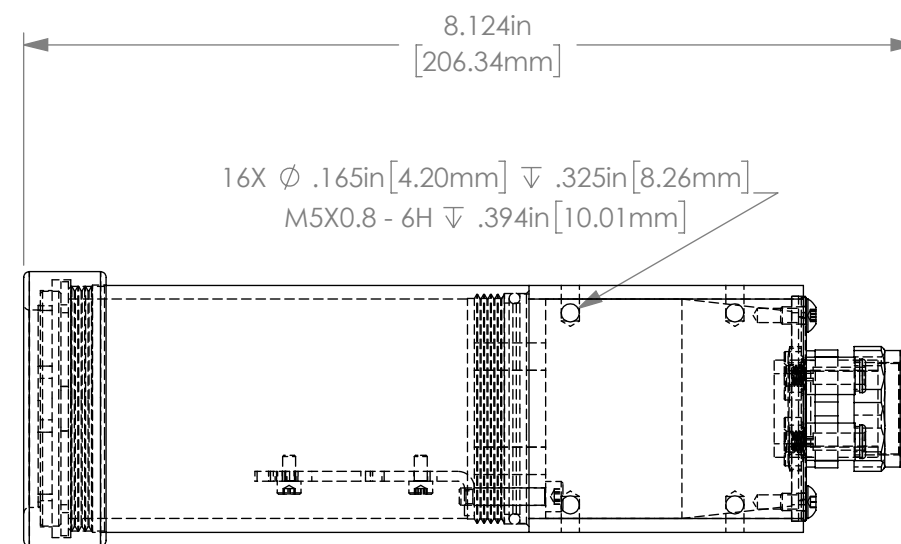
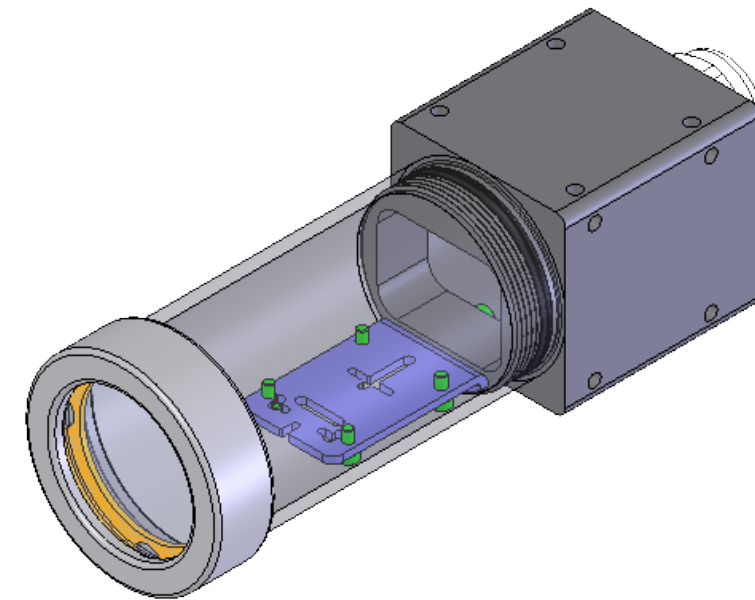
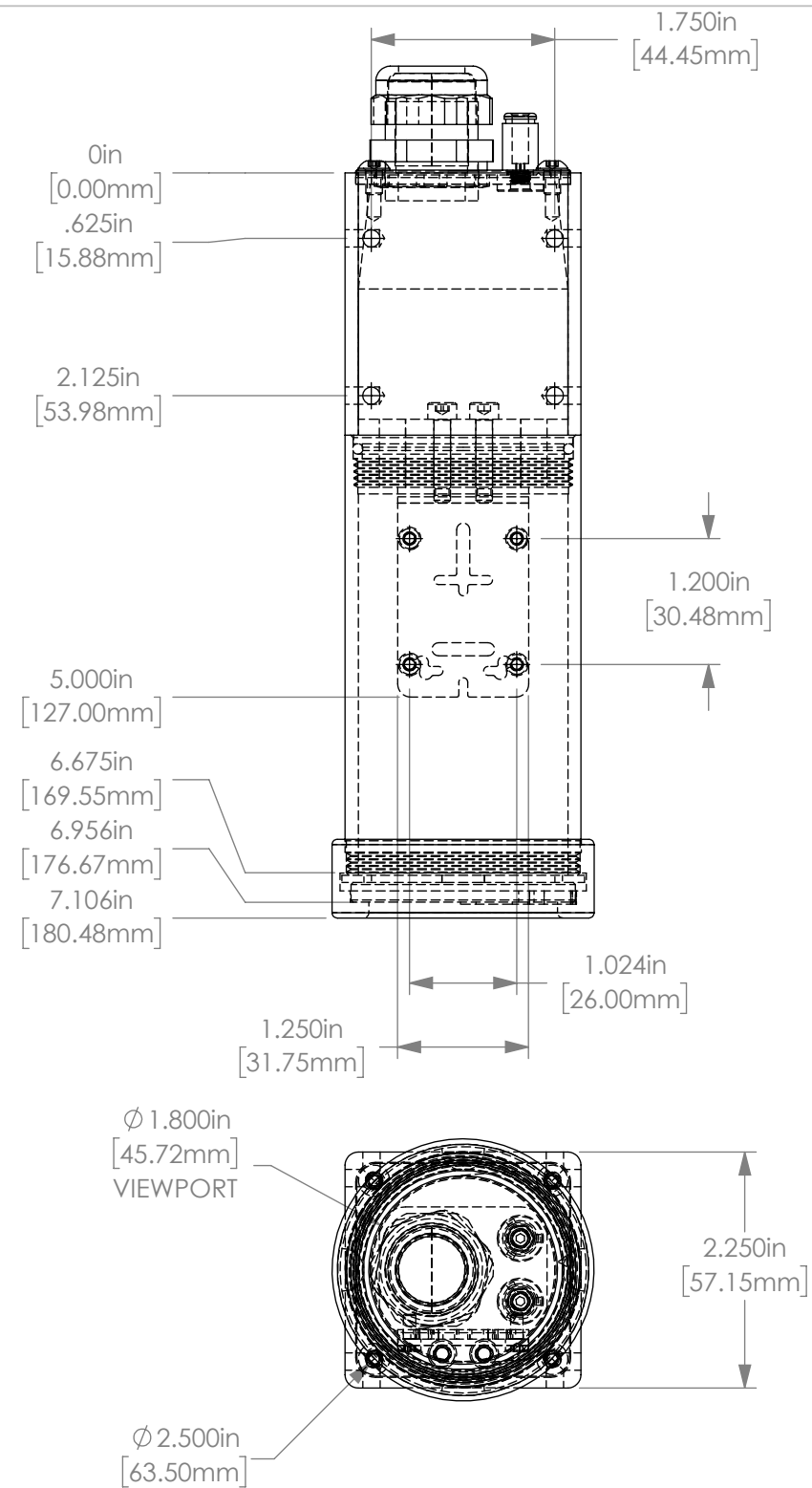
THIS PRINT IS THE PROPERTY OF ALLISON PARK GROUP. THE INFORMATION CONTAINED HEREIN IS CONFIDENTIAL. IT IS NOT TRANSFERABLE. IT IS FURNISHED WITH THE CLEAR UNDERSTANDING THAT IT IS NOT TO BE TRACED, REPRODUCED OR USED IN ANY PROCESS OF MANUFACTURING WITHOUT WRITTEN PERMISSION FROM THE OWNER AND IS RETURNABLE UPON DEMAND. ANY INFRINGEMENT UPON THE PATENT RIGHTS SHOWN HEREIN, WHETHER IN PART OR WHOLE, WILL BE PROSECUTED.

AS PART OF OUR POLICY OF CONTINUING DEVELOPMENT, ALLISON PARK GROUP RESERVES THE RIGHT TO ALTER SPECIFICATIONS WITHOUT PRIOR NOTICE.



Allison Park Group, Inc. (APG)  
4055 Alpha Drive  
Allison Park, PA 15101 USA  
Phone +1 (412) 487-8211  
Fax +1 (412) 486-3157

DESCRIPTION: <b>22C-AG ASSY</b>			
MATERIAL:		APPROX. WEIGHT 0.540	
FINISH:			
DRAWN BY: AW	DATE: 1/26/2018	SCALE: NTS	SHT-SIZE: B
CHECKED BY:	DATE:	PART NUMBER: <b>22C-AG</b>	REVISION: <b>A</b>
APPROVED BY:	DATE:	Sheet 1 of 1	



TOLERANCES UNLESS OTHERWISE SPECIFIED		SHEETMETAL	
MACHINING			
XX	0.0300	XX	± 0.0
X.XX	0.0100	X.XX	± 0.020
X.XXX	0.0050	X.XXX	NOTED
X.XXXX	0.0025	ANGULAR	0.5°
ANGULAR	0.5°	DEBURR	ALL EDGES

THIS PRINT IS THE PROPERTY OF ALLISON PARK GROUP. THE INFORMATION CONTAINED HEREIN IS CONFIDENTIAL. IT IS NOT TRANSFERABLE. IT IS FURNISHED WITH THE CLEAR UNDERSTANDING THAT IT IS NOT TO BE TRACED, REPRODUCED OR USED IN ANY PROCESS OF MANUFACTURING WITHOUT WRITTEN PERMISSION FROM THE OWNER AND IS RETURNABLE UPON DEMAND. ANY INFRINGEMENT UPON THE PATENT RIGHTS SHOWN HEREIN, WHETHER IN PART OR WHOLE, WILL BE PROSECUTED.

AS PART OF OUR POLICY OF CONTINUING DEVELOPMENT, ALLISON PARK GROUP RESERVES THE RIGHT TO ALTER SPECIFICATIONS WITHOUT PRIOR NOTICE.



Allison Park Group, Inc. (APG)  
4055 Alpha Drive  
Allison Park, PA 15101 USA  
Phone +1 (412) 487-8211  
Fax +1 (412) 486-3157

DESCRIPTION: <b>22C-AE ASSY</b>			
MATERIAL:		APPROX. WEIGHT 0.517	
FINISH:			
DRAWN BY: AW	DATE: 1/29/2018	SCALE: NTS	SHT-SIZE: B
CHECKED BY:	DATE:	PART NUMBER:	REF. NUMBER:
APPROVED BY:	DATE:	22C-AE Sheet 1 of 1	
			REVISION A

4

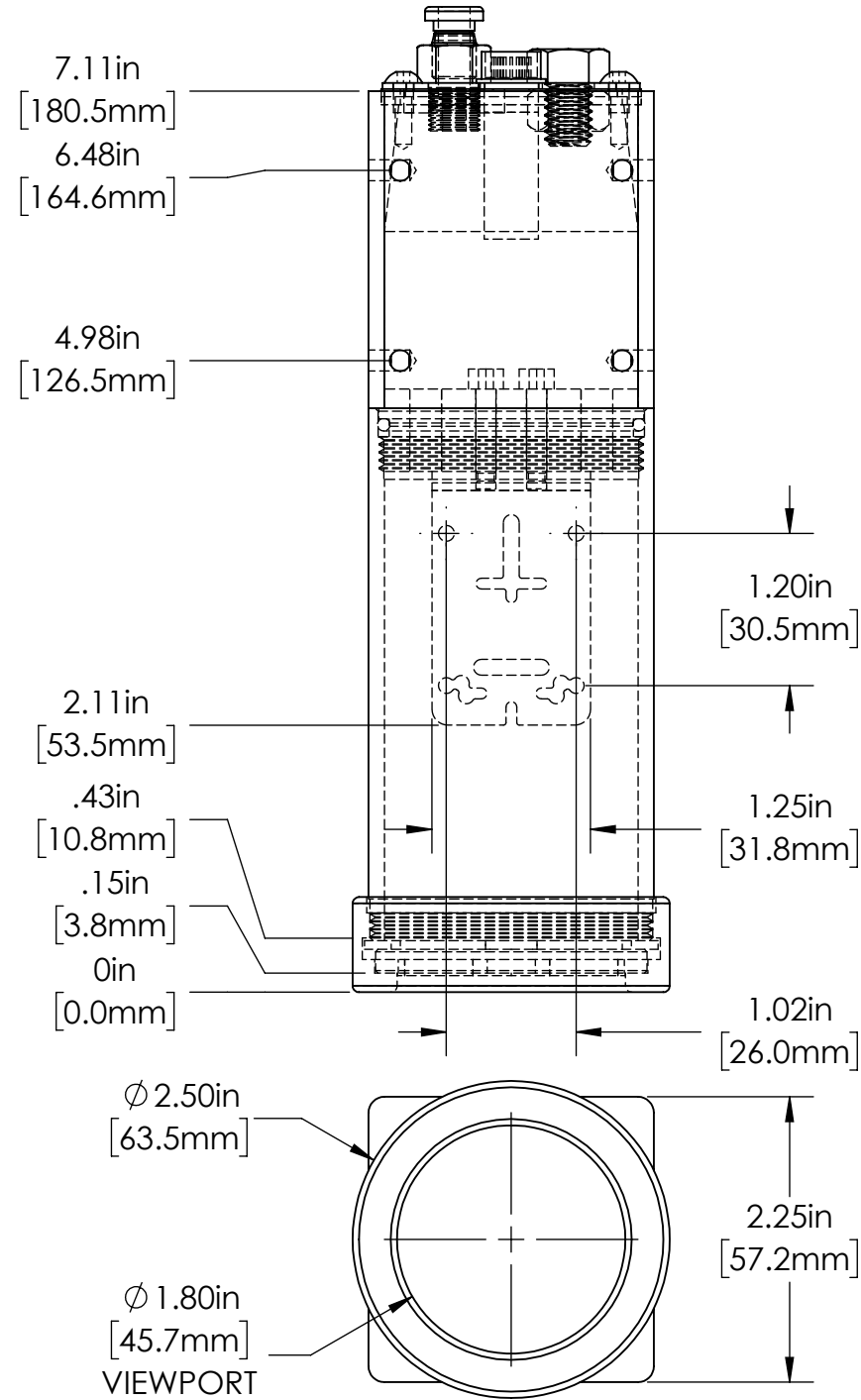
3

2

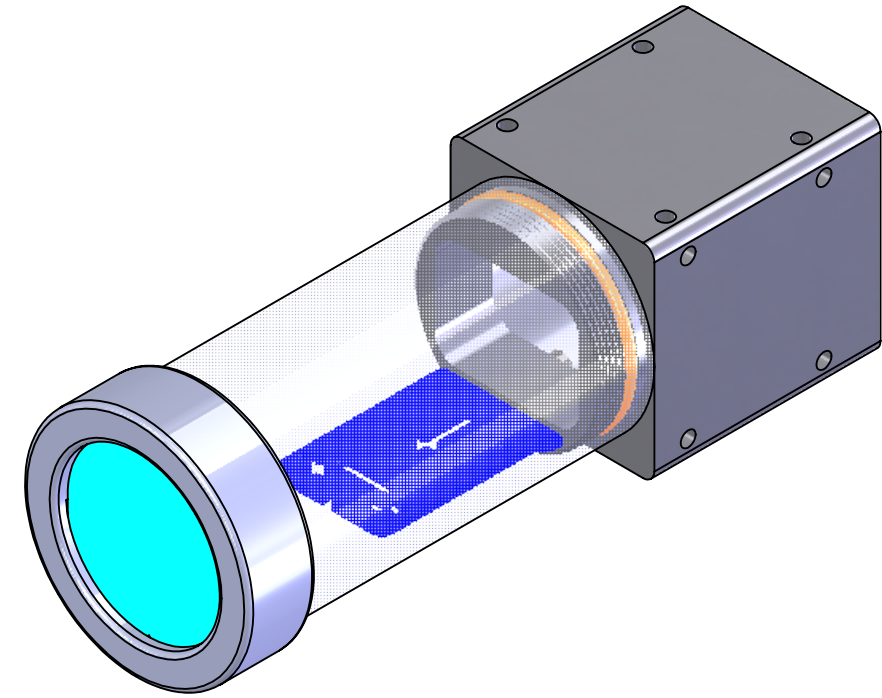
1

B

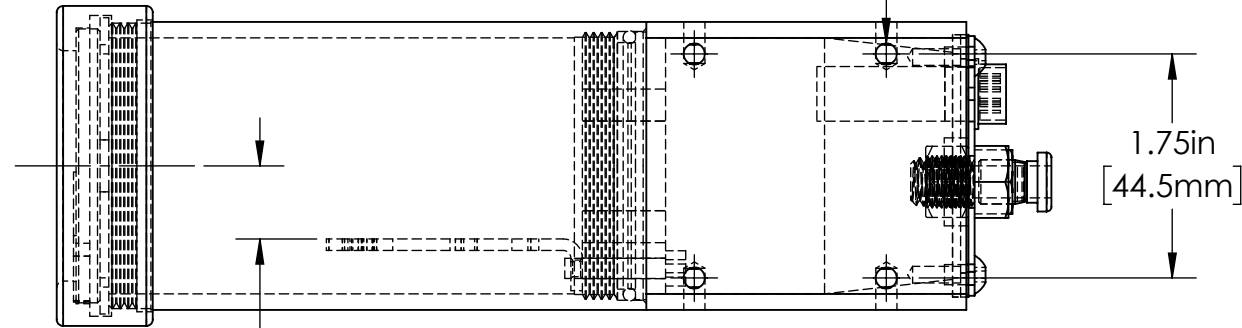
B



REVISIONS				
ZONE	REV.	DESCRIPTION	DATE	APPROVED
	A		7/30/2019	



16X  $\phi$  .17in [4.2mm]  $\nabla$  .33in [8.3mm]  
M5X0.8 - 6H  $\nabla$  .39in [10.0mm]



A

A

**PROPERTIES TABLE**

<b>ENVIRONMENT RATING</b>	IP67*	
	(*RATING MAY CHANGE IF INSTALLER MILLS CABLE GLAND OUTSIDE OF TOLERANCE)	
<b>COMPONENT</b>	<b>MATERIAL</b>	<b>FINISH</b>
BODY	6061 ALUM	CLEAR HARDCOAT
VIEWPORT	GLASS	NONE
GASKET	40D SILICONE EPDM FOAM	NONE
ARM/ADAPTOR	304 SS	NONE
HARDWARE	INTERIOR: 18-8 SS EXTERIOR: 316 SS	NONE

TOLERANCES UNLESS OTHERWISE SPECIFIED

MACHINING		SHEET METAL	
X.X	0.0250"	HOLE TO HOLE (SAME SURFACE)	
X.XX	0.0100"	X.X	0.030"
X.XXX	0.0050"	X.XX	0.010"
X.XXXX	0.0005"	X.XXX	0.005"
ANGULAR	0.5°	X.XXX	0.015"
DEBURR ALL		HOLE TO FOLDED EDGE	
		X.X	0.035"
		X.XX	0.025"
		X.XXX	0.015"
		FOLD TO FOLD	
		X.X	0.045"
		X.XX	0.035"
		X.XXX	0.020"
		ANGULAR 1.0°	

ALL WEIGHTS ARE IN POUNDS

THIS PRINT IS THE PROPERTY OF ALLISON PARK GROUP. THE INFORMATION CONTAINED HEREIN IS CONFIDENTIAL. IT IS NOT TRANSFERABLE. IT IS FURNISHED WITH THE CLEAR UNDERSTANDING THAT IT IS NOT TO BE TRACED, REPRODUCED OR USED IN ANY PROCESS OF MANUFACTURING WITHOUT WRITTEN PERMISSION FROM THE OWNER AND IS RETURNABLE UPON DEMAND. ANY INFRINGEMENT UPON THE PATENT RIGHTS SHOWN HEREIN, WHETHER IN PART OR WHOLE, WILL BE PROSECUTED.

AS PART OF OUR POLICY OF CONTINUING DEVELOPMENT, ALLISON PARK GROUP RESERVES THE RIGHT TO ALTER SPECIFICATIONS WITHOUT PRIOR NOTICE.

**apg** Allison Park Group, Inc (APG)  
4055 Alpha Drive  
Allison Park, PA 15101 USA  
Phone +1 (412) 487-8211  
apgvision.com

DESCRIPTION:  
**22C-AD ENCLOSURE**

MATERIAL: **SEE BOM**

FINISH: **SEE BOM**

DRAWN BY:	DATE:	SCALE:	SHT-SIZE:	APPROX. WEIGHT:
TWD	3/27/2020	2:3	B	0.8708
CHECKED BY:	DATE:	PART NUMBER:	REVISION	
		<b>22C-AD</b>	<b>A</b>	

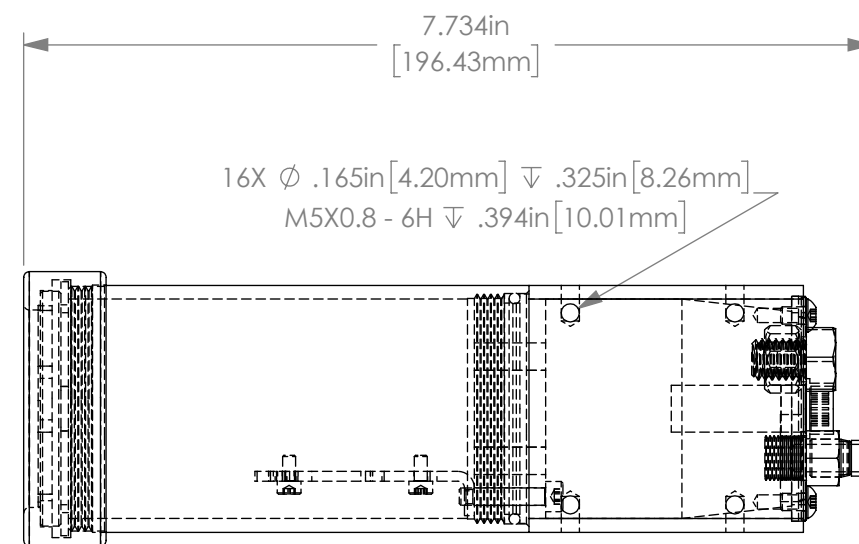
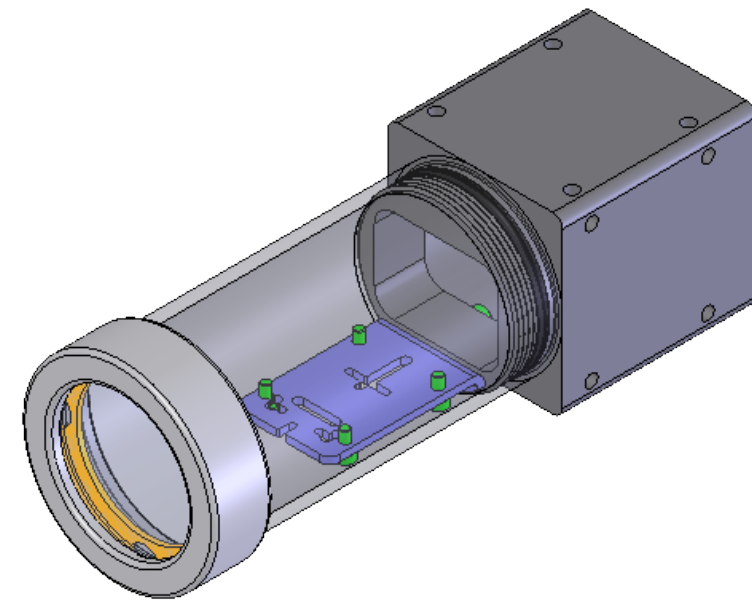
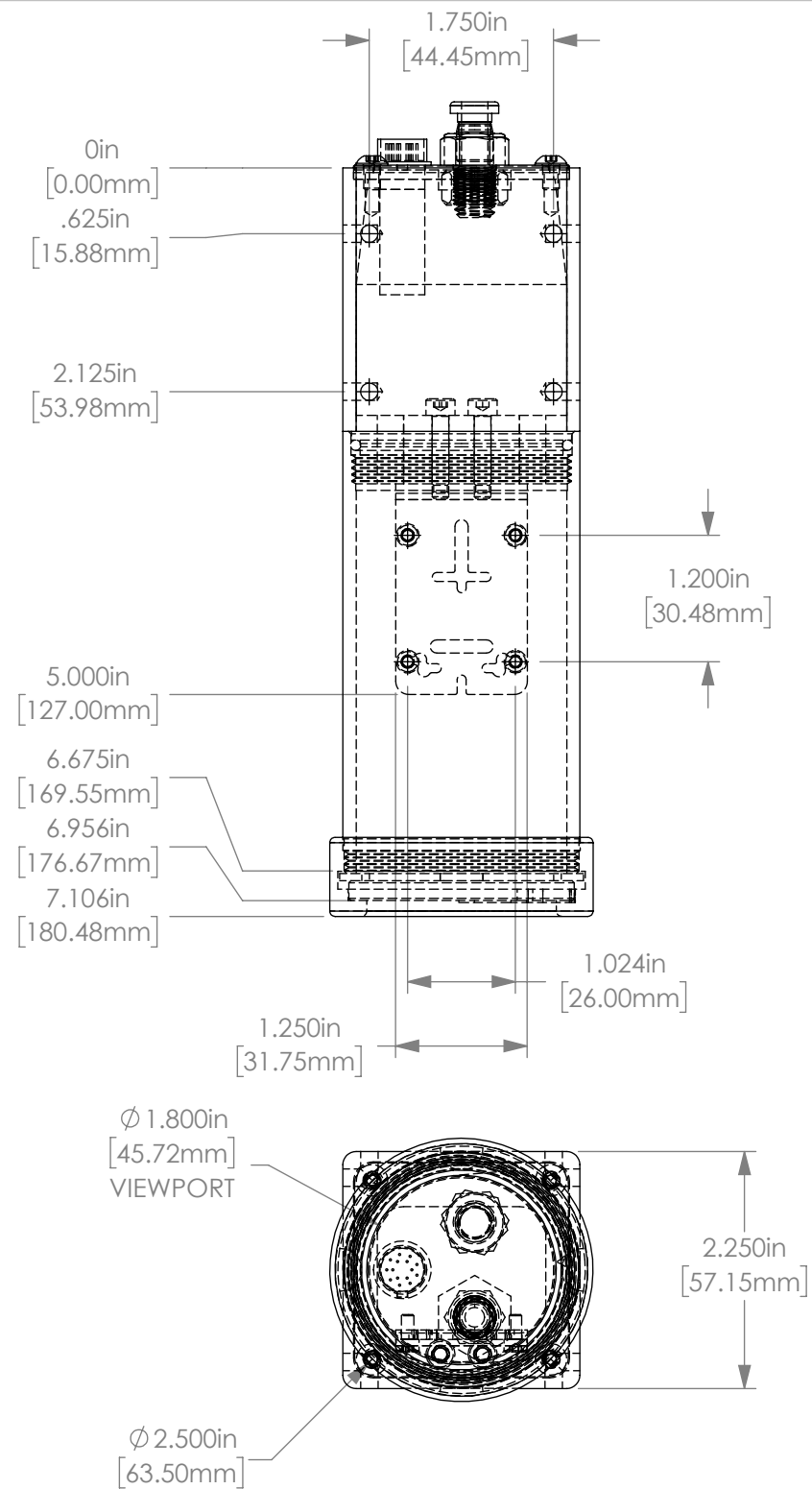
Sheet 1 of 1

4

3

2

1



TOLERANCES UNLESS OTHERWISE SPECIFIED		SHEETMETAL	
MACHINING			
XX	0.0300	XX	± 0.0
X.XX	0.0100	X.XX	± 0.020
X.XXX	0.0050	X.XXX	NOTED
X.XXXX	0.0025	ANGULAR	0.5°
ANGULAR	0.5°	DEBURR	ALL EDGES

THIS PRINT IS THE PROPERTY OF ALLISON PARK GROUP. THE INFORMATION CONTAINED HEREIN IS CONFIDENTIAL. IT IS NOT TRANSFERABLE. IT IS FURNISHED WITH THE CLEAR UNDERSTANDING THAT IT IS NOT TO BE TRACED, REPRODUCED OR USED IN ANY PROCESS OF MANUFACTURING WITHOUT WRITTEN PERMISSION FROM THE OWNER AND IS RETURNABLE UPON DEMAND. ANY INFRINGEMENT UPON THE PATENT RIGHTS SHOWN HEREIN, WHETHER IN PART OR WHOLE, WILL BE PROSECUTED.

AS PART OF OUR POLICY OF CONTINUING DEVELOPMENT, ALLISON PARK GROUP RESERVES THE RIGHT TO ALTER SPECIFICATIONS WITHOUT PRIOR NOTICE.



Allison Park Group, Inc. (APG)  
4055 Alpha Drive  
Allison Park, PA 15101 USA  
Phone +1 (412) 487-8211  
Fax +1 (412) 486-3157

DESCRIPTION:				APPROX. WEIGHT	
22C-AA ASSY				0.463	
MATERIAL:				FINISH:	
DRAWN BY: AW				DATE: 1/26/2018	SCALE: NTS
CHECKED BY:				DATE:	SHT-SIZE: B
APPROVED BY:				DATE:	REF. NUMBER:
				PART NUMBER: 22C-AA	REVISION: A
				Sheet 1 of 1	



For more information please contact:

**BOCK OPTRONICS INC.**  
14 Steinway Blvd., Unit 7  
Toronto, Ontario M9W 6M6

Tel: (416) 674-2804  
sales@bockoptronics.ca  
www.bockoptronics.ca