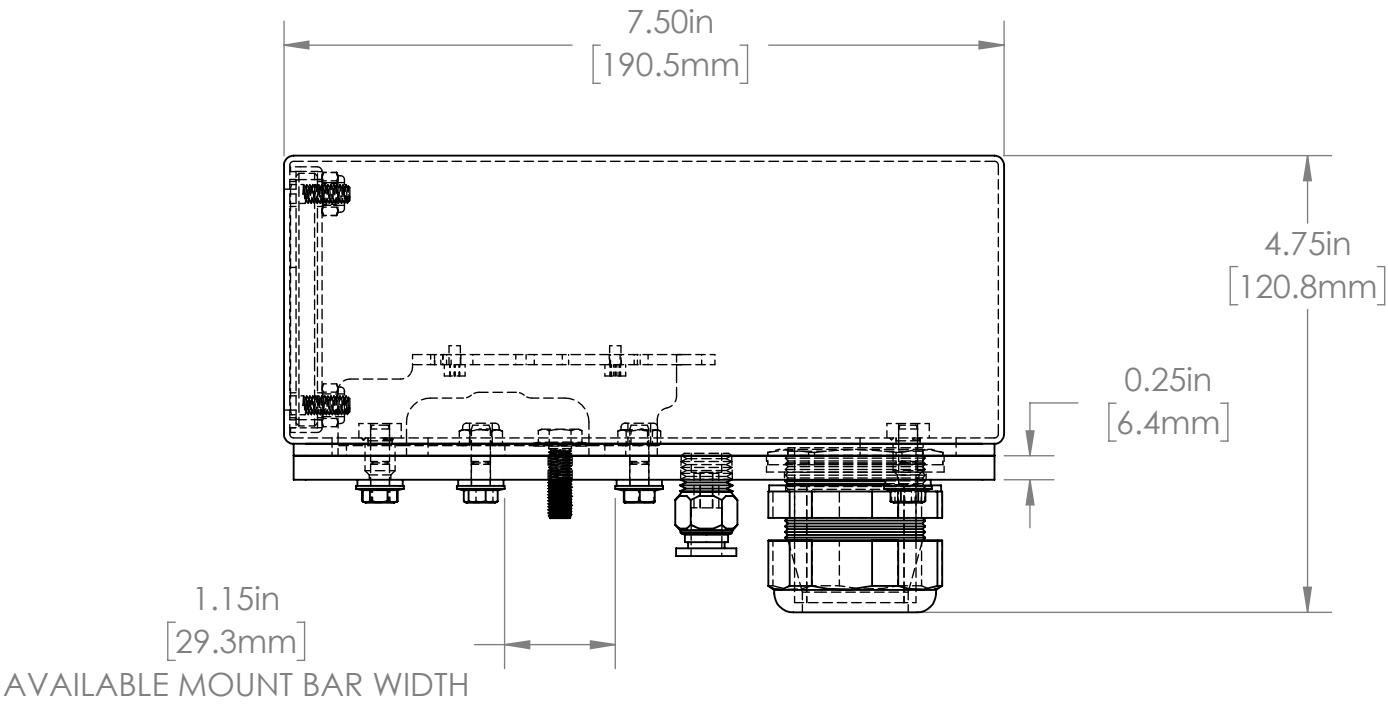
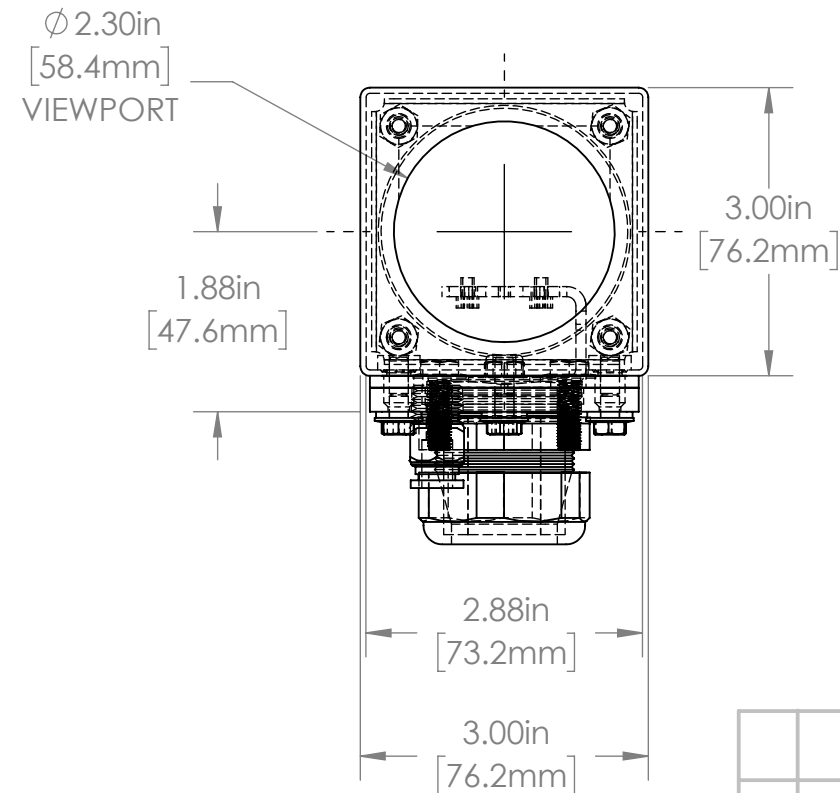
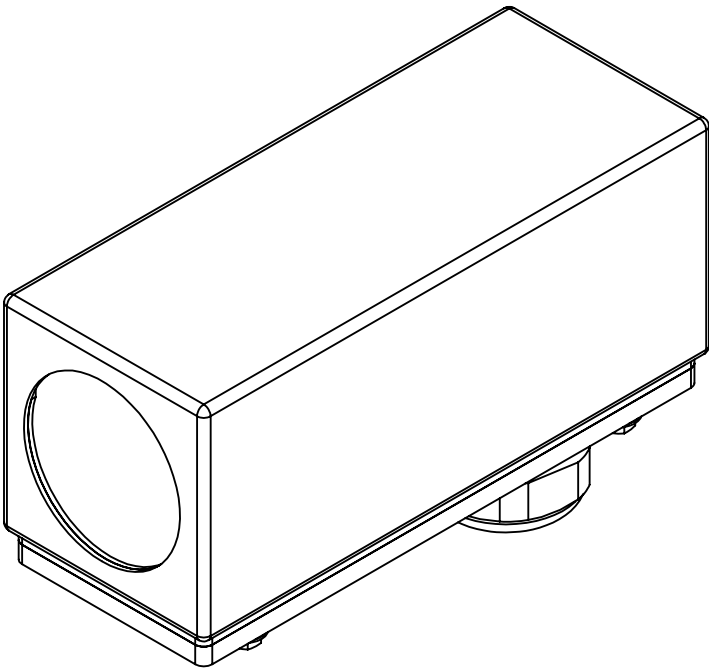
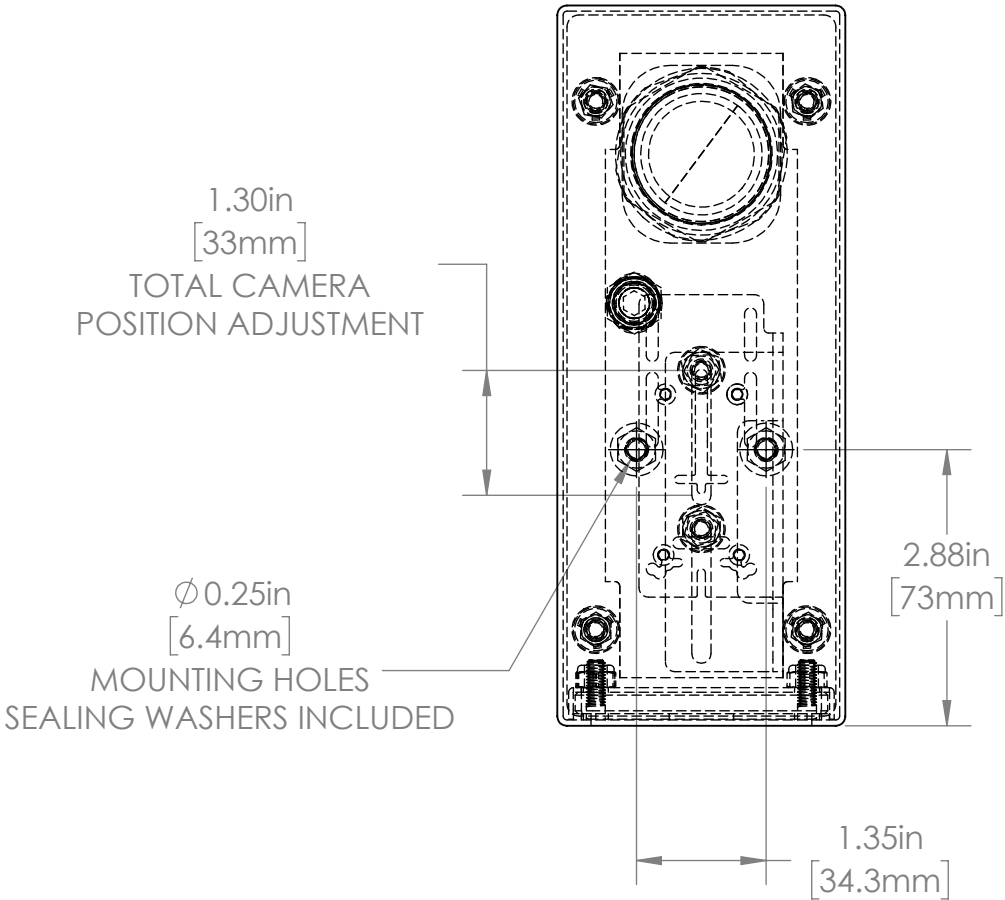
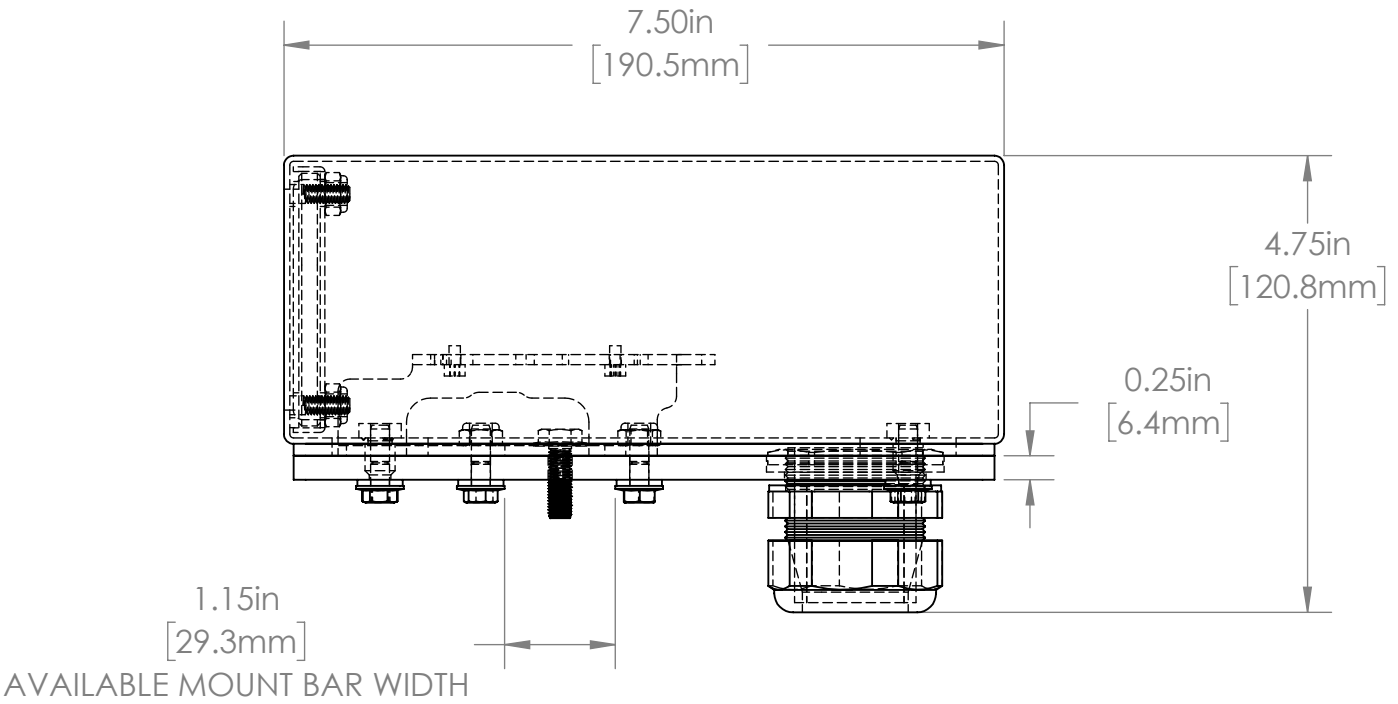
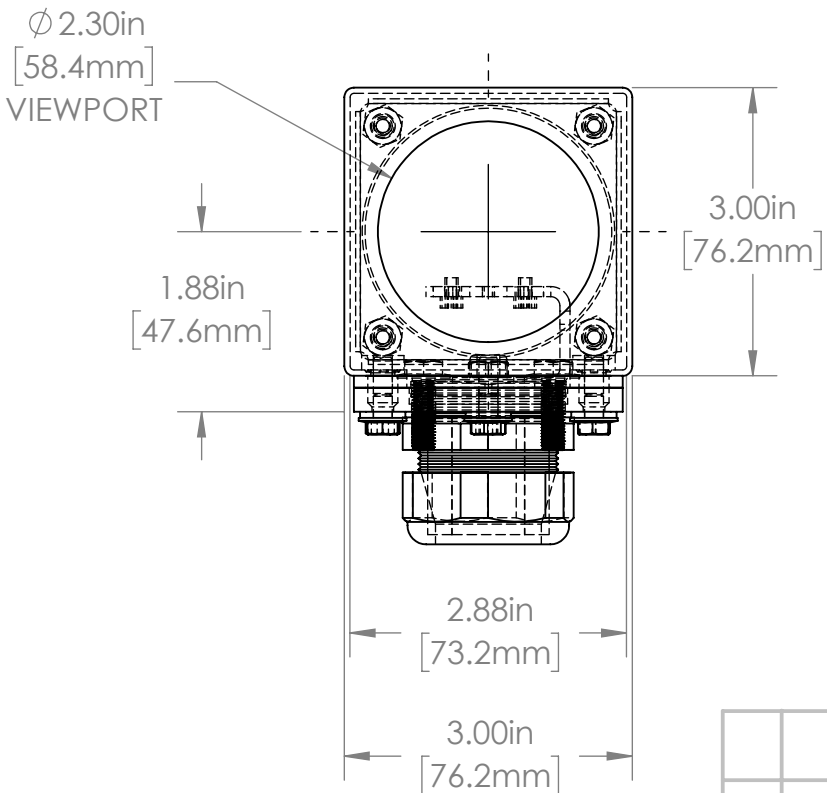
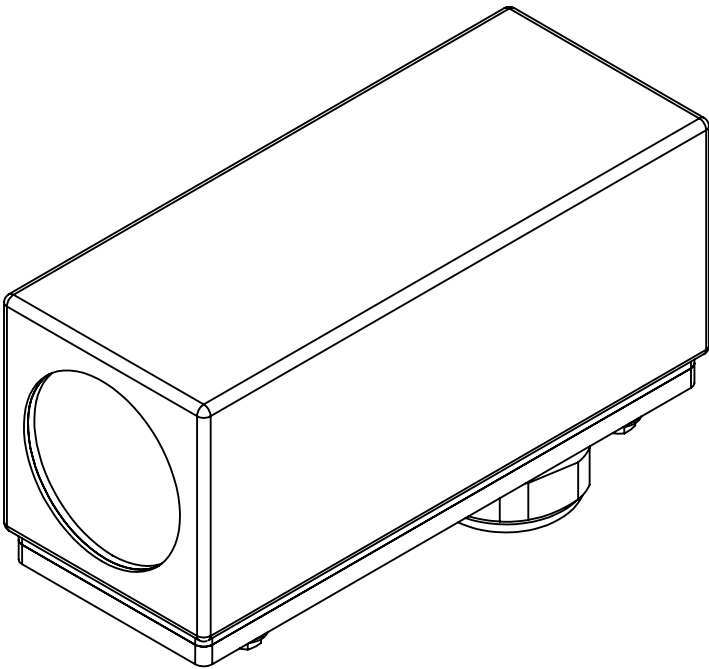
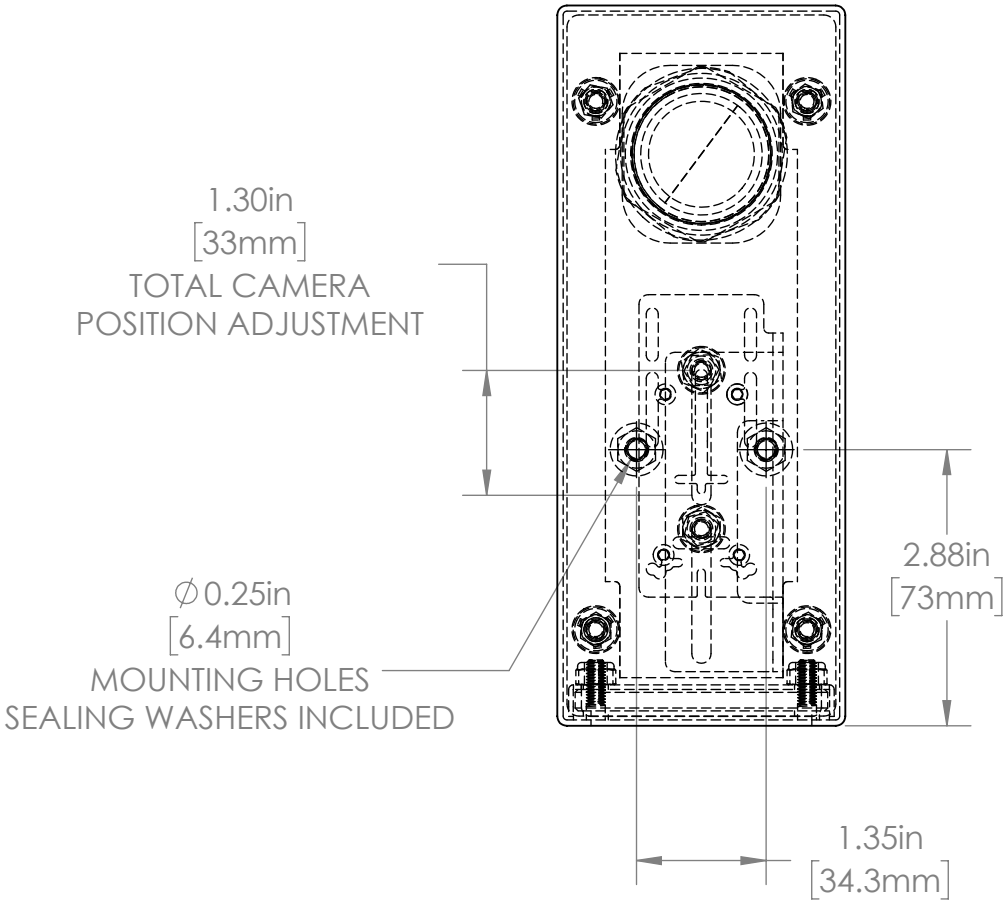


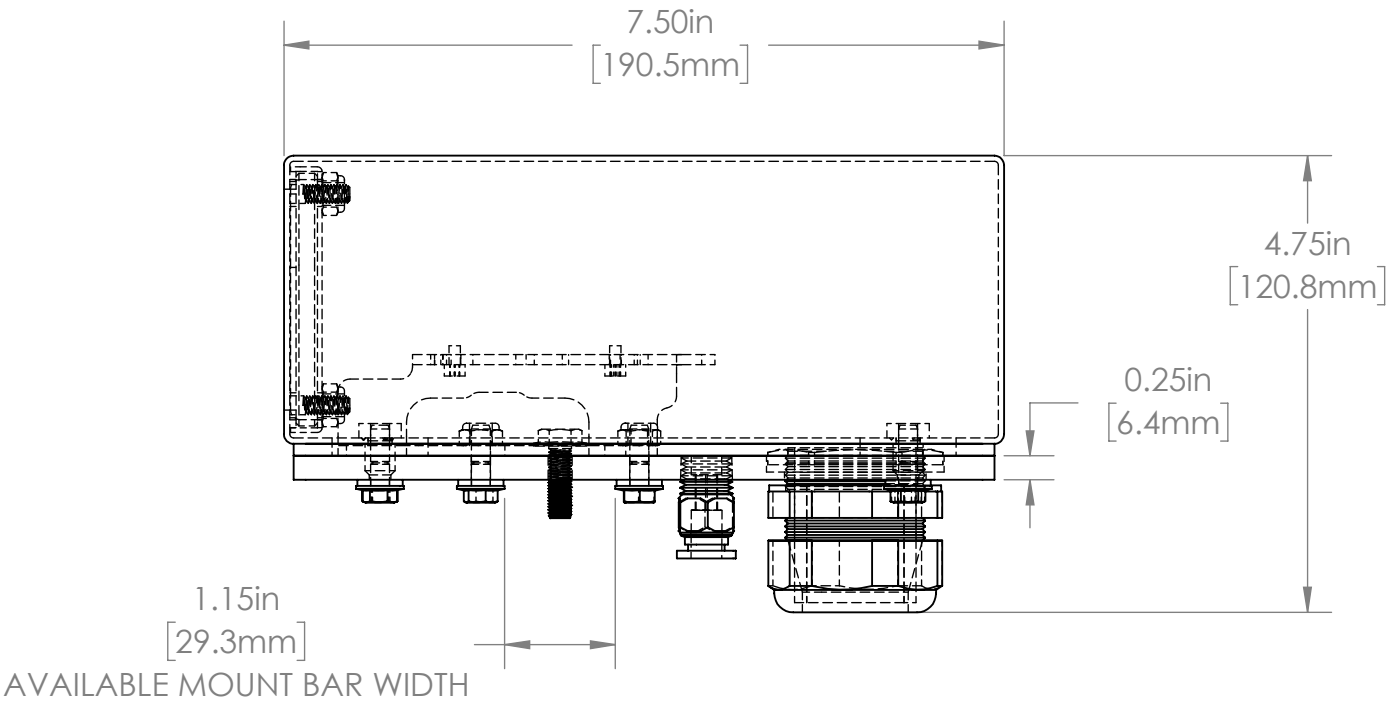
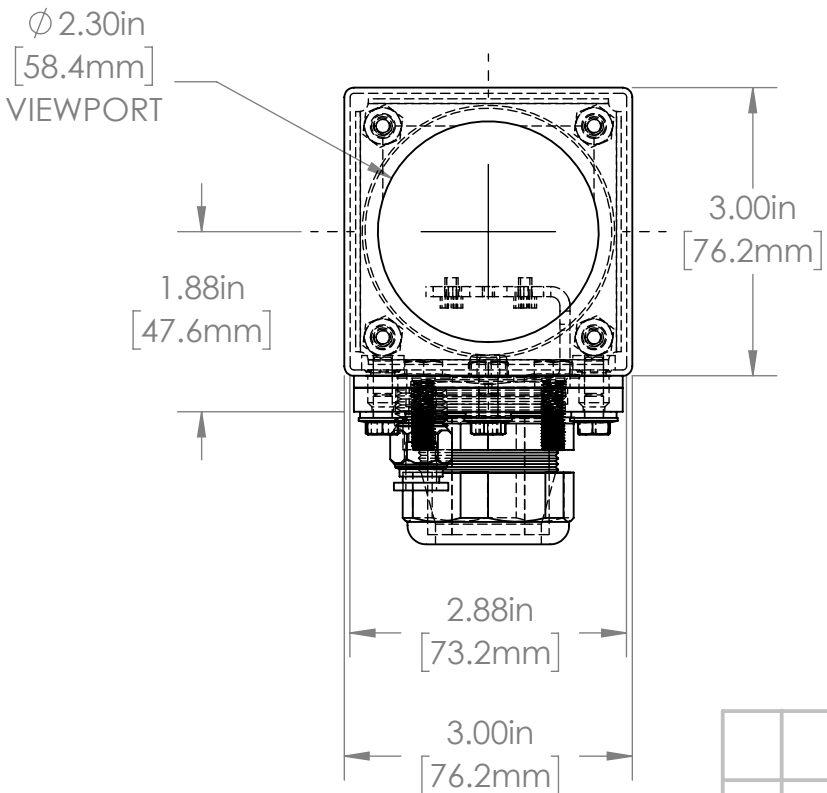
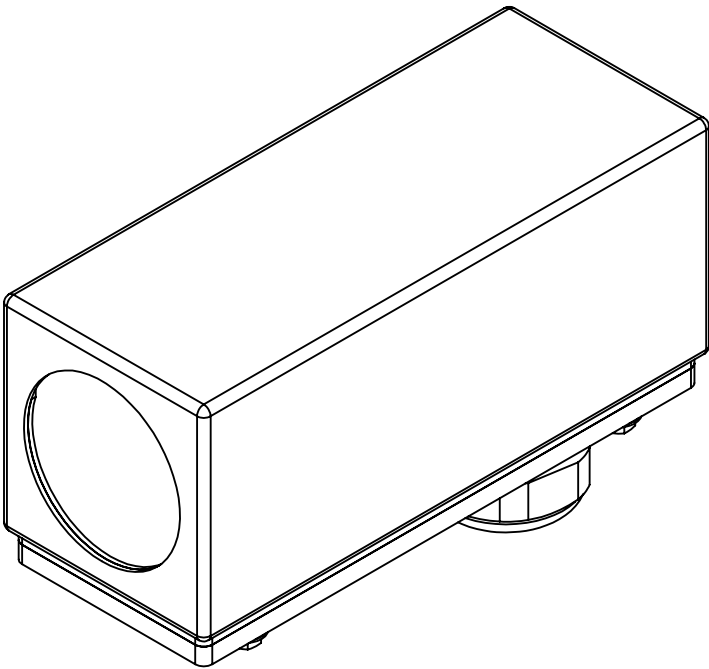
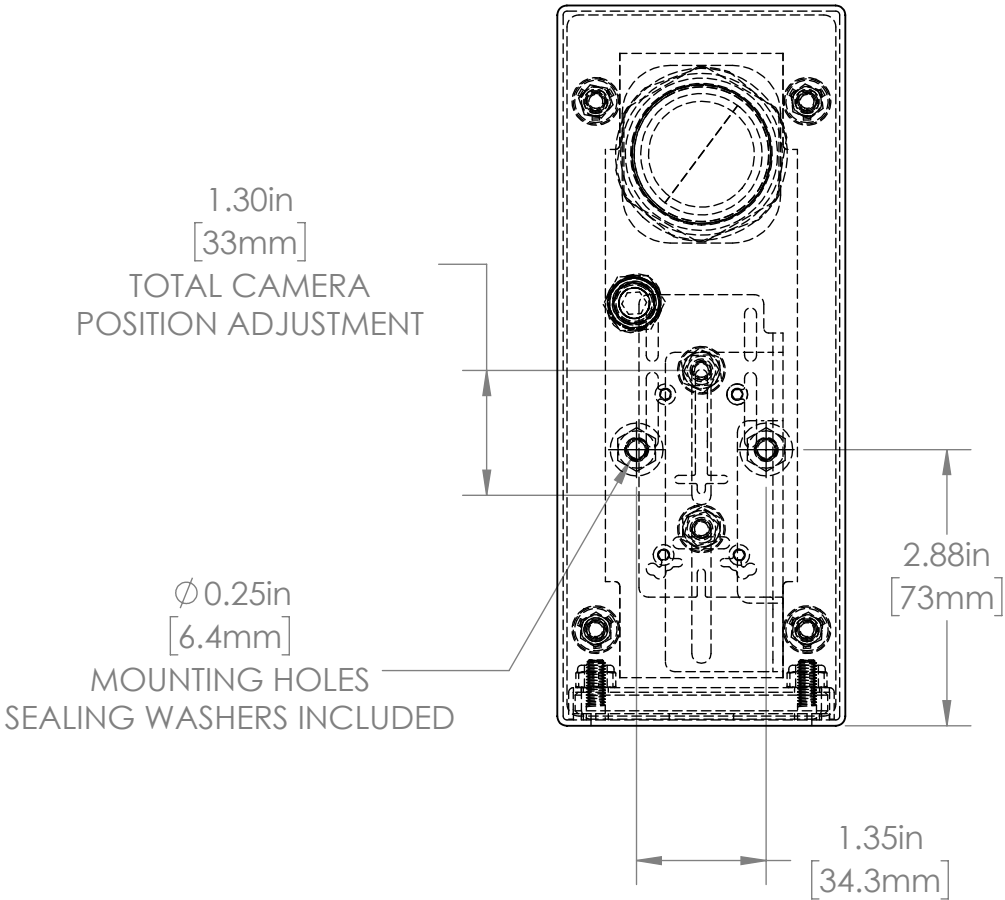
				UNLESS OTHERWISE SPECIFIED: DIMENSIONS ARE IN INCHES SURFACE FINISH: TOLERANCES: .000= +/- 0.005" .00= +/- 0.010"		FINISH: DEBUR AND BREAK SHARP EDGES		Allison Park Group, Inc. (APG) 4055 Alpha Drive Allison Park, PA 15101 USA		DO NOT SCALE DRAWING		REVISION				
				LINEAR:				Phone +1 (412) 487-8211 Fax +1 (412) 486-3157		This document is the property of APG and is considered company confidential. The information in this document is the property of APG and may not be used, reproduced, or distributed in whole or in part without the prior written permission of APG						
					NAME	SIGNATURE	DATE	www.apgvision.com								
				DRAWN	SCHUBERT		7/14/2010									
				CHK'D												
				APPV'D												
				MFG												
				Q.A												
				NOTES: ACRYLIC VIEWPORT SILICONE GASKETS				MATERIAL: 316 Stainless Steel BODY, BASE, & FASTENERS		DWG NO.		30S-AD		A3		
NO.	CHANGE		DATE	INIT.					WEIGHT:		SCALE:1:2		SHEET 1 OF 1			



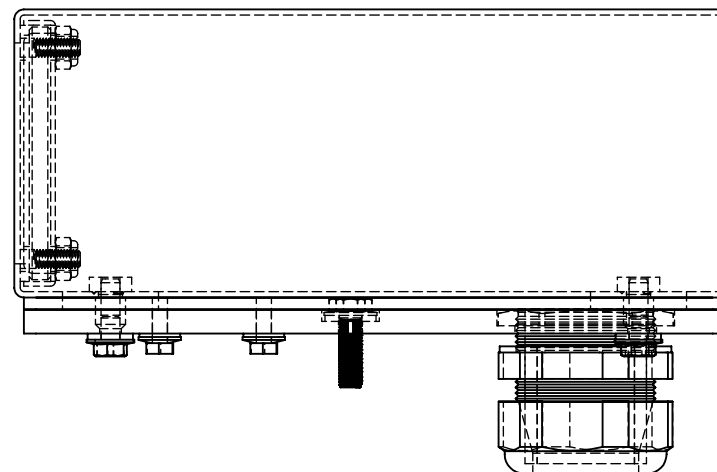
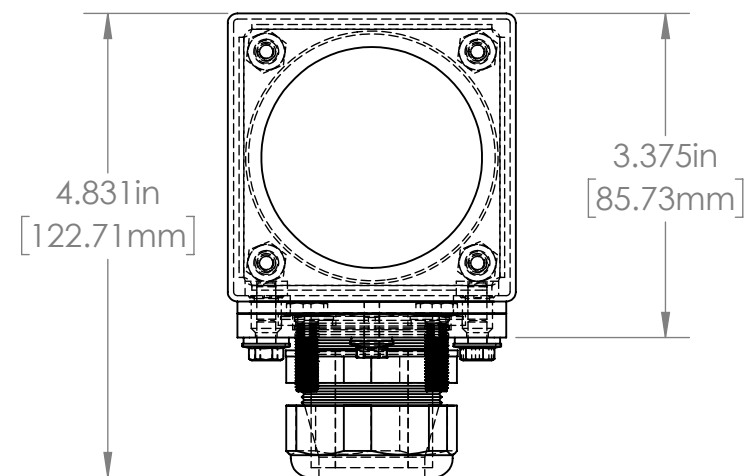
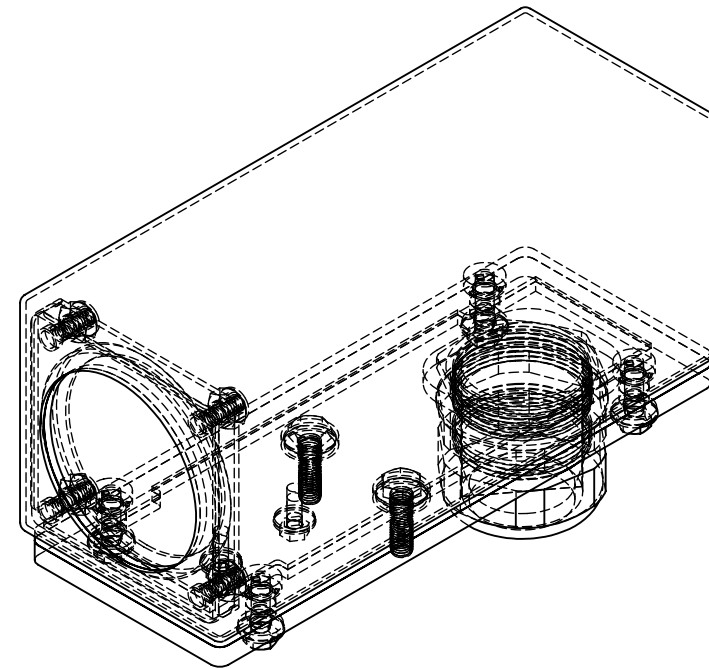
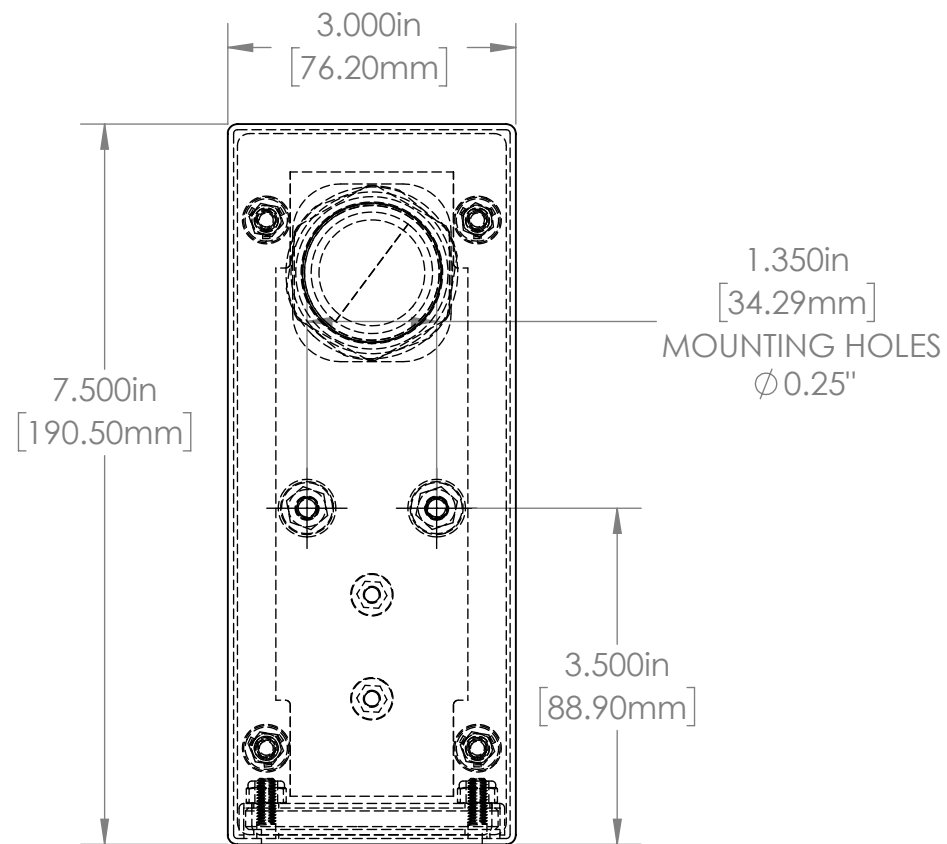
					UNLESS OTHERWISE SPECIFIED: DIMENSIONS ARE IN INCHES SURFACE FINISH: TOLERANCES: .000= +/- 0.005" .00= +/- 0.010"		FINISH:		Allison Park Group, Inc. (APG) 4055 Alpha Drive Allison Park, PA 15101 USA	DO NOT SCALE DRAWING		REVISION	
					LINEAR:		DEBUR AND BREAK SHARP EDGES			This document is the property of APG and is considered company confidential. The information in this document is the property of APG and may not be used, reproduced, or distributed in whole or in part without the prior written permission of APG			
						NAME	SIGNATURE	DATE	Phone +1 (412) 487-8211 Fax +1 (412) 486-3157 www.apgvision.com	TITLE: 30S-AF (universal 7.5 PG29 acrylic ACFP)			
					DRAWN	M. HART		5/26/2017					
					CHK'D								
					APPV'D								
					MFG								
					Q.A				MATERIAL:	DWG NO.		30S-AF	
					NOTES:								
NO.	CHANGE	DATE	INIT.						WEIGHT:	SCALE:1:2		SHEET 1 OF 1	



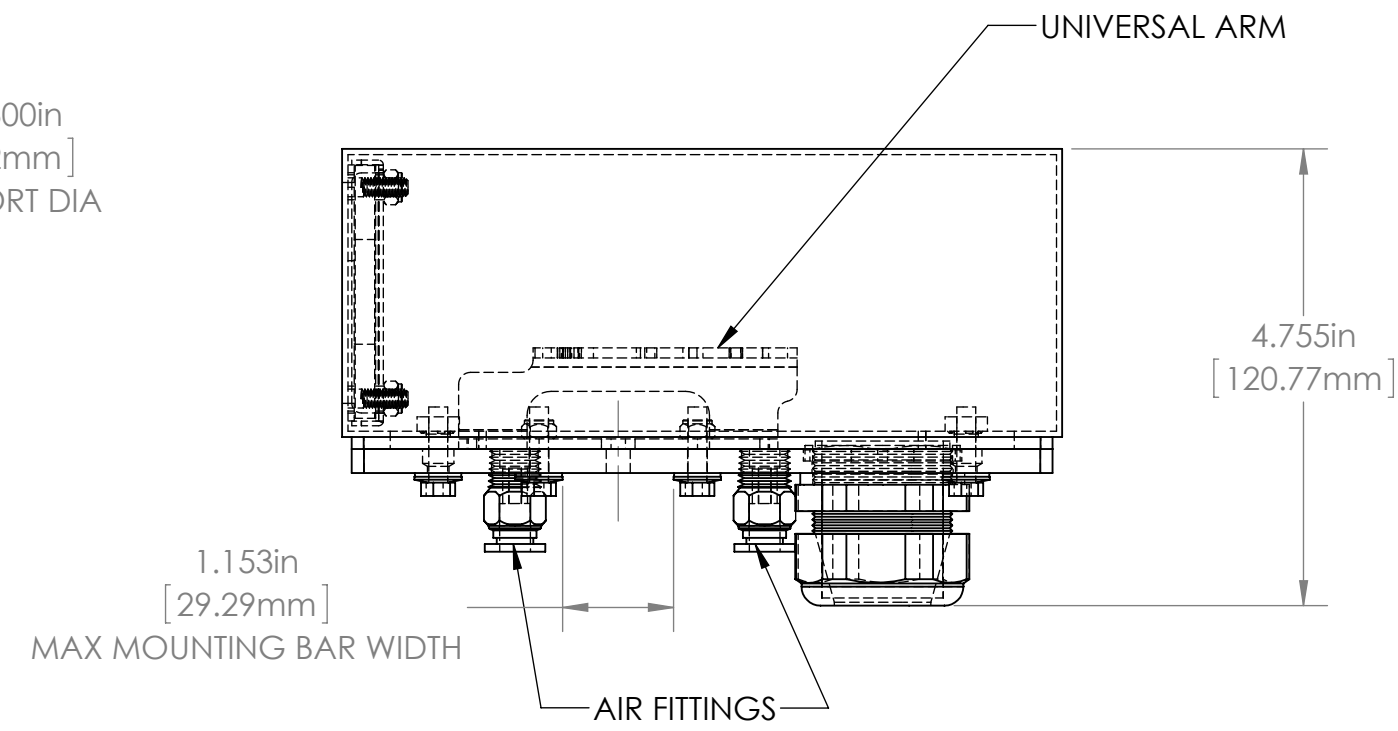
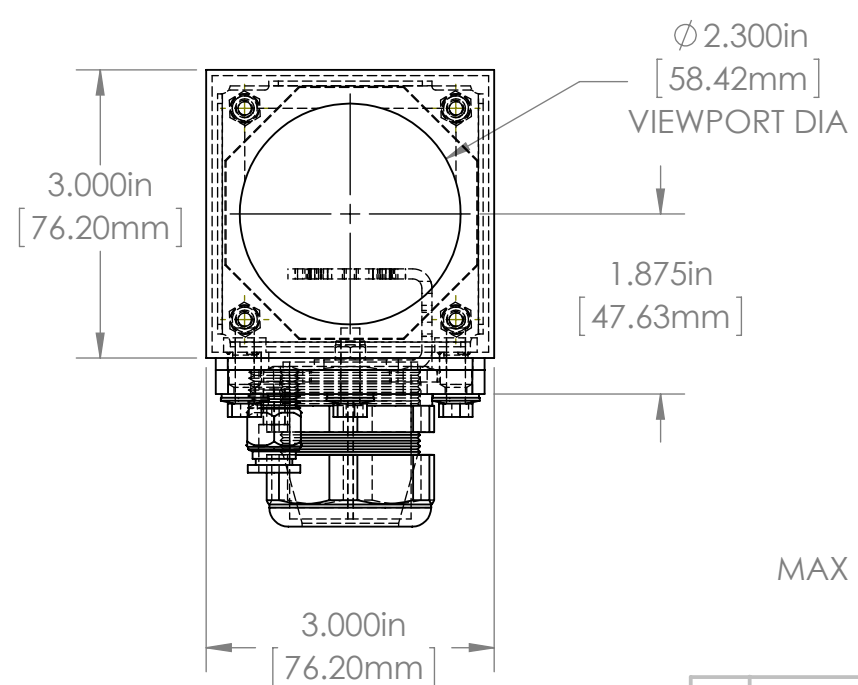
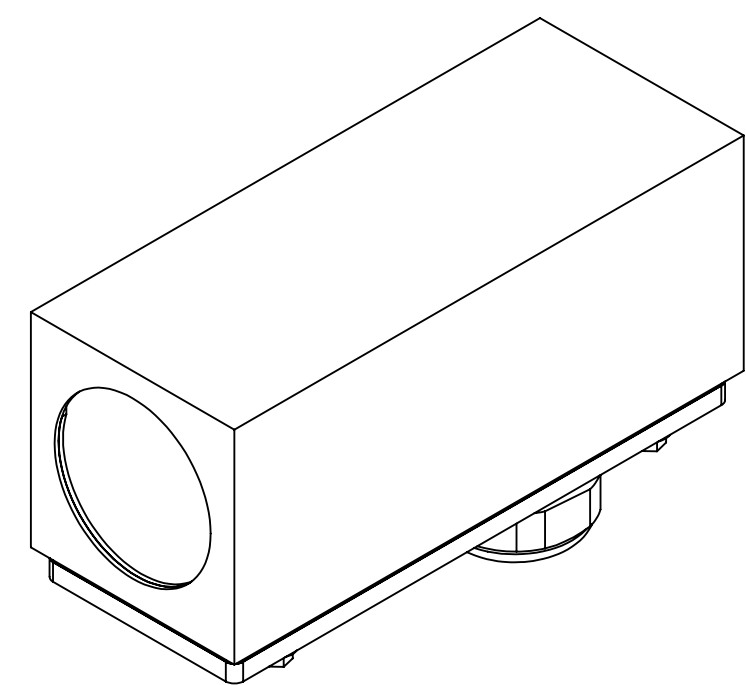
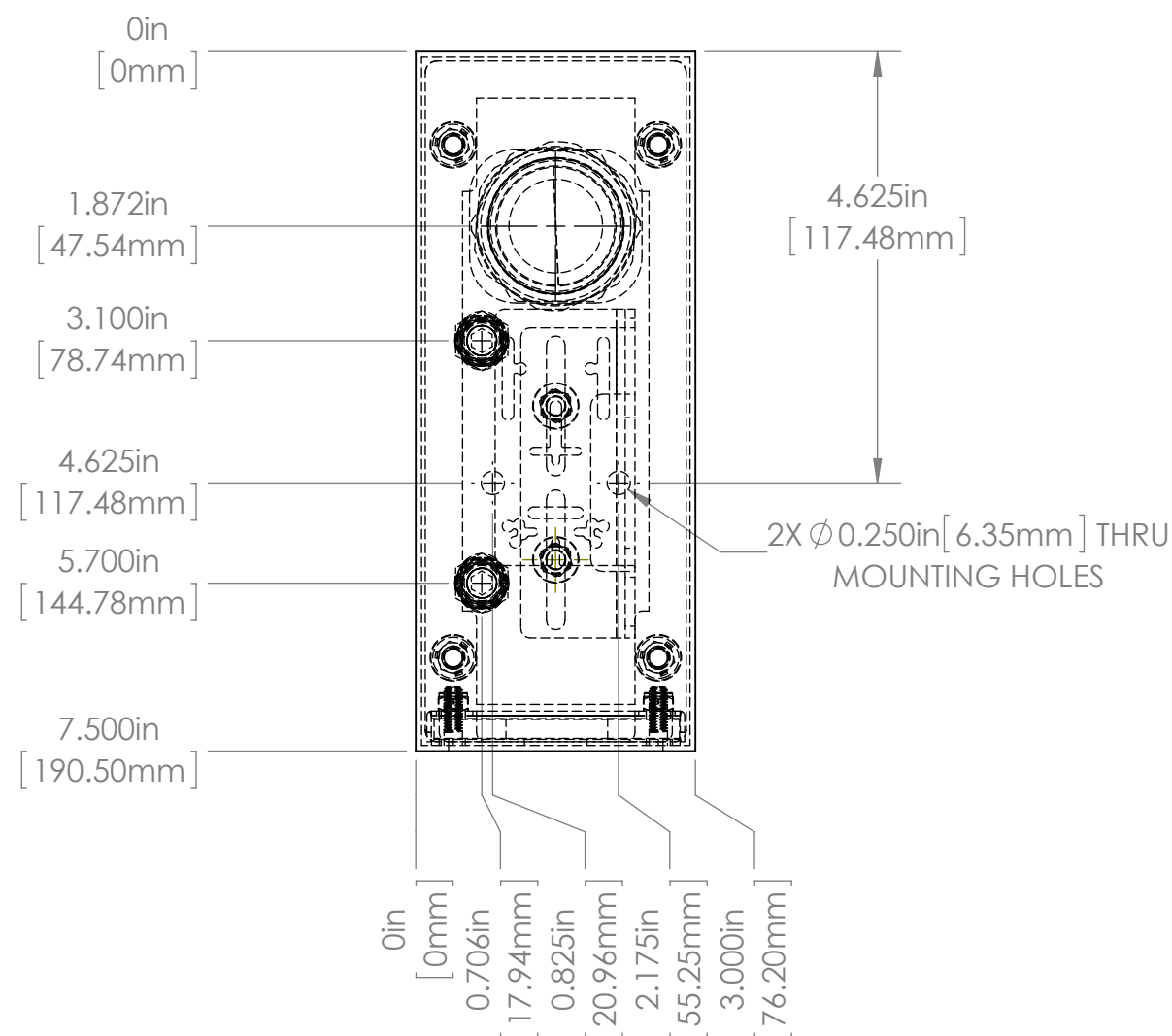
				UNLESS OTHERWISE SPECIFIED: DIMENSIONS ARE IN INCHES SURFACE FINISH: TOLERANCES: .000= +/- 0.005" .00= +/- 0.010"		FINISH:		Allison Park Group, Inc. (APG) 4055 Alpha Drive Allison Park, PA 15101 USA Phone +1 (412) 487-8211 Fax +1 (412) 486-3157 www.apgvision.com MATERIAL: WEIGHT:	DO NOT SCALE DRAWING		REVISION	
				LINEAR:		DEBUR AND BREAK SHARP EDGES			This document is the property of APG and is considered company confidential. The information in this document is the property of APG and may not be used, reproduced, or distributed in whole or in part without the prior written permission of APG			
				DRAWN	NAME M. HART	SIGNATURE	DATE 5/26/2017		TITLE: 30S-AG (universal 7.5 PG29 gls sealed)			
				CHK'D								
				APPV'D								
				MFG								
				Q.A								
				NOTES:					DWG NO.		30S-AG	
NO.	CHANGE	DATE	INIT.						SHEET 1 OF 1			



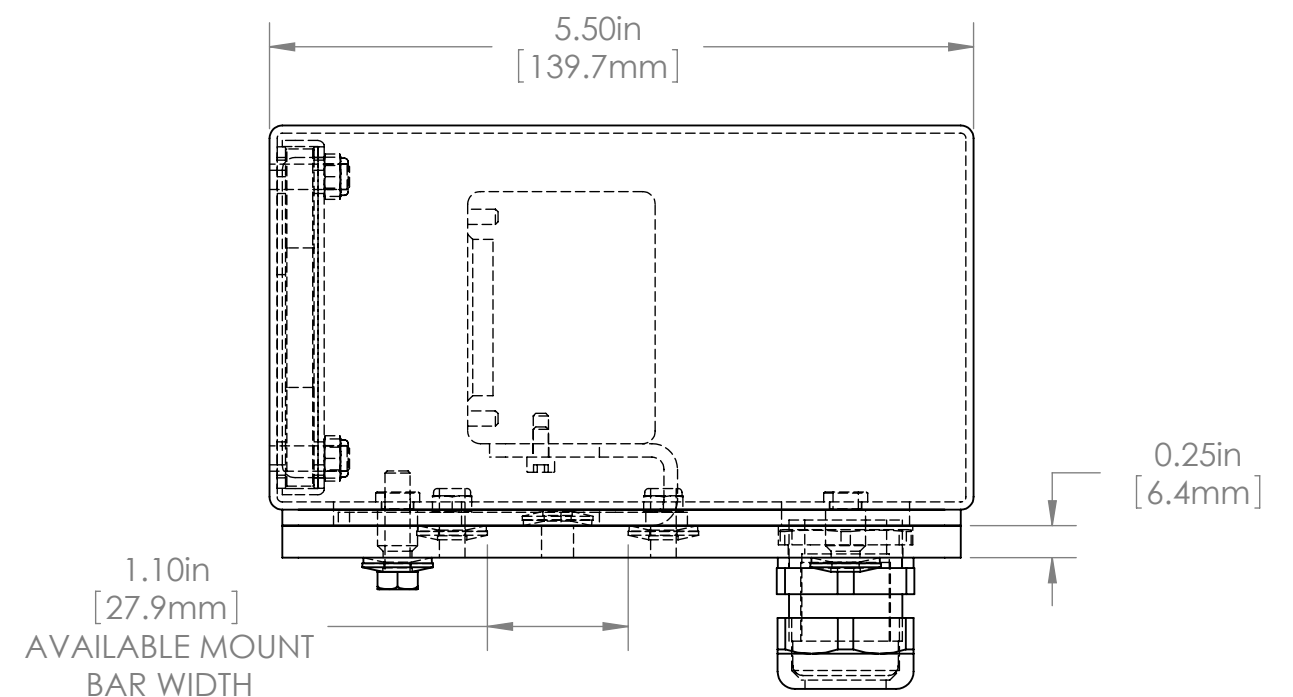
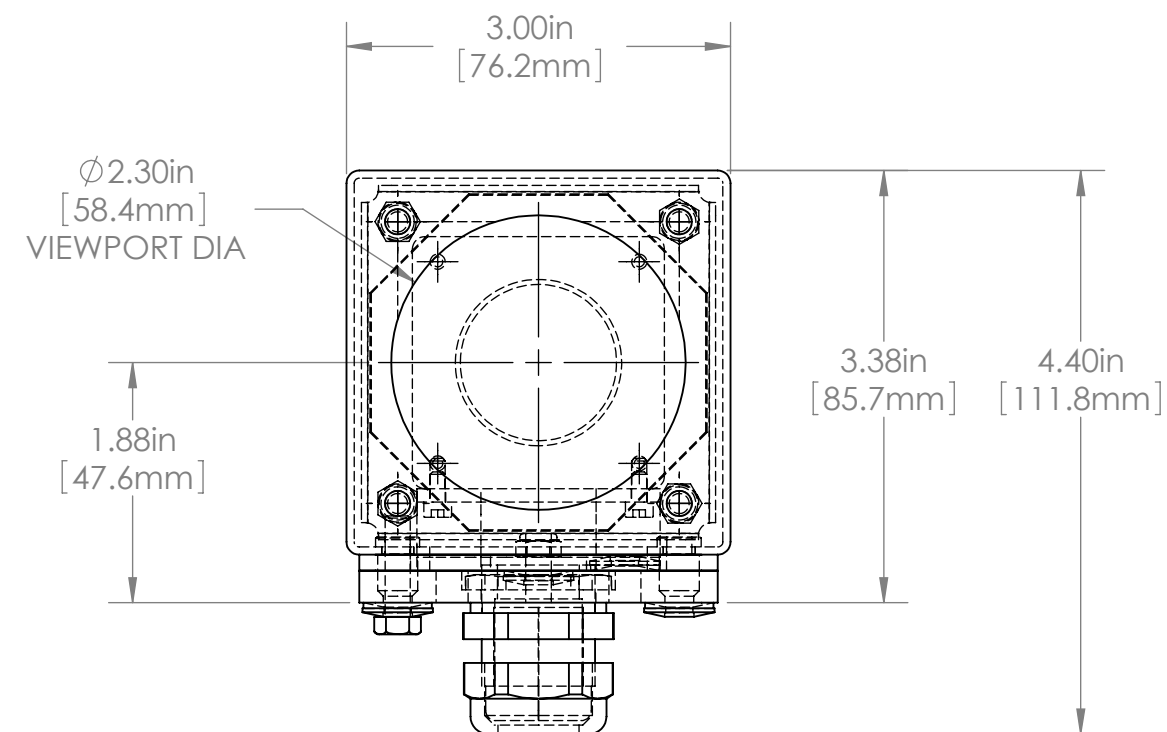
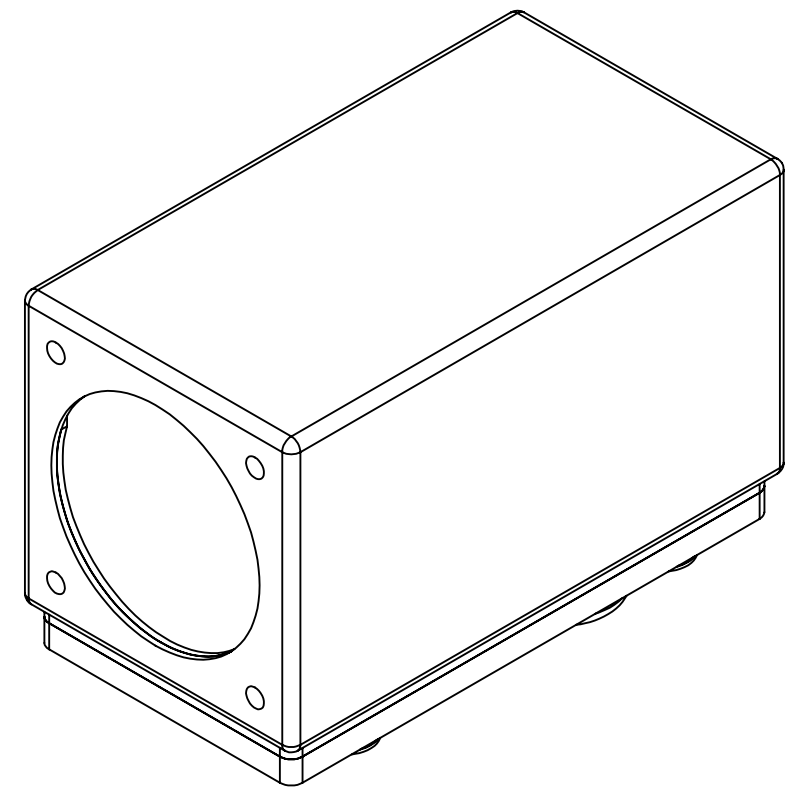
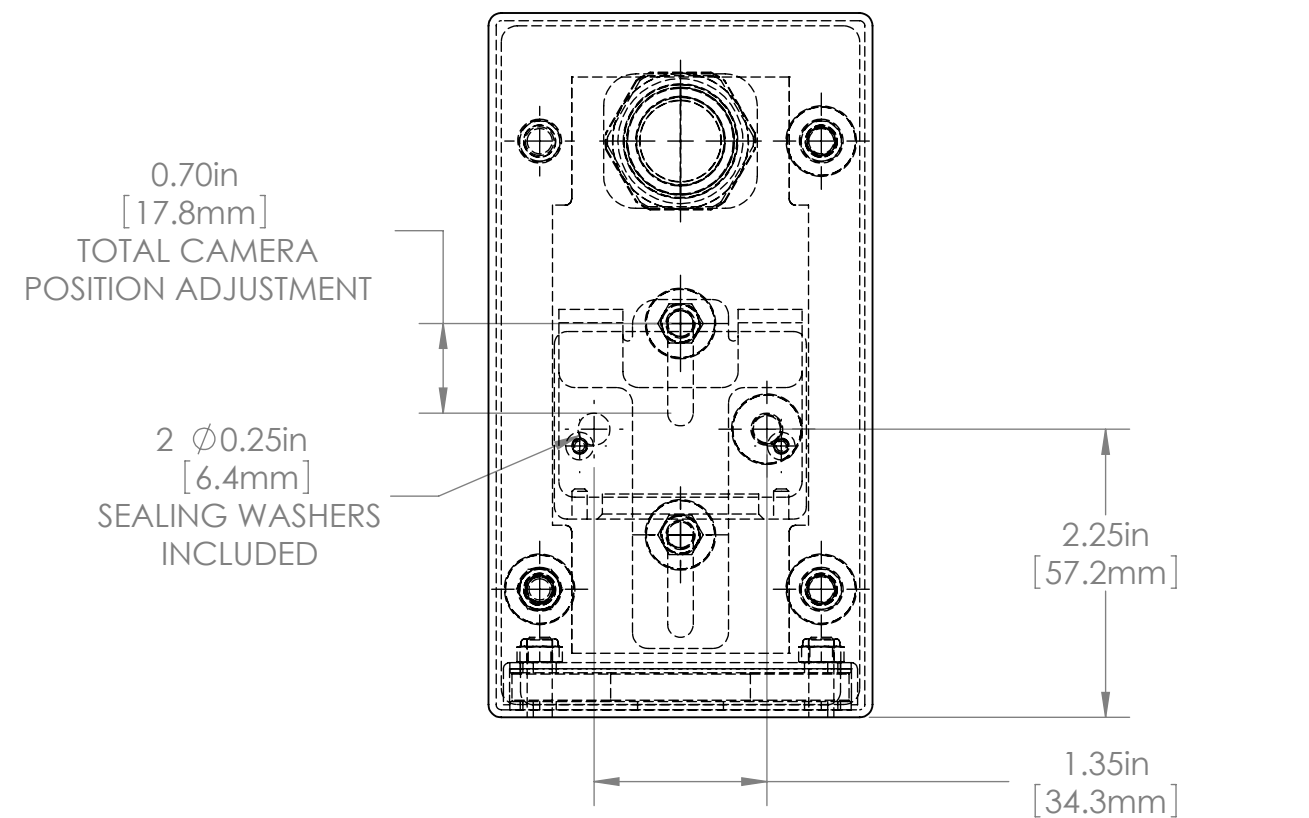
				UNLESS OTHERWISE SPECIFIED: DIMENSIONS ARE IN INCHES SURFACE FINISH: TOLERANCES: .000= +/- 0.005" .00= +/- 0.010"		FINISH:		Allison Park Group, Inc. (APG) 4055 Alpha Drive Allison Park, PA 15101 USA		DO NOT SCALE DRAWING		REVISION	
				LINEAR:		DEBUR AND BREAK SHARP EDGES		Phone +1 (412) 487-8211 Fax +1 (412) 486-3157		This document is the property of APG and is considered company confidential. The information in this document is the property of APG and may not be used, reproduced, or distributed in whole or in part without the prior written permission of APG			
				DRAWN		NAME		SIGNATURE		DATE		TITLE:	
				CHK'D		M. HART				5/30/2017		30S-AH (universal 7.5 PG29 gls ACFP)	
				APPV'D									
				MFG									
				Q.A									
				NOTES:				MATERIAL:		DWG NO.		A3	
										30S-AH			
NO.		CHANGE		DATE		INIT.		WEIGHT:		SCALE:1:2		SHEET 1 OF 1	



				UNLESS OTHERWISE SPECIFIED: DIMENSIONS ARE IN INCHES SURFACE FINISH: TOLERANCES: .000= +/- 0.005" .00= +/- 0.010"				FINISH:		Allison Park Group, Inc. (APG) 4055 Alpha Drive Allison Park, PA 15101 USA				DO NOT SCALE DRAWING		REVISION			
				LINEAR:				DEBUR AND BREAK SHARP EDGES						This document is the property of APG and is considered company confidential. The information in this document is the property of APG and may not be used, reproduced, or distributed in whole or in part without the prior written permission of APG					
						NAME		SIGNATURE		DATE		Phone +1 (412) 487-8211 Fax +1 (412) 486-3157 www.apgvision.com				TITLE: 30S-AL (Checker)			
				DRAWN		M. HART				6/1/2017									
				CHK'D															
				APPV'D															
				MFG															
				Q.A								MATERIAL:				DWG NO.		A3	
				NOTES:															
NO.		CHANGE		DATE		INIT.						WEIGHT:				SCALE:1:2		SHEET 1 OF 1	



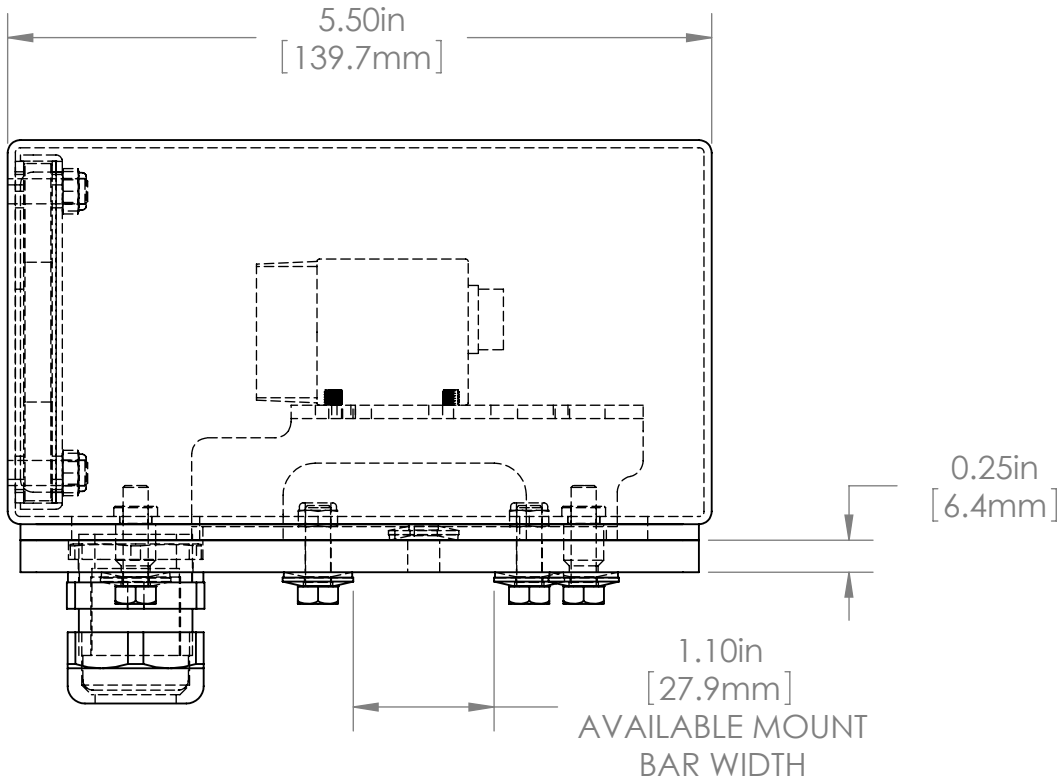
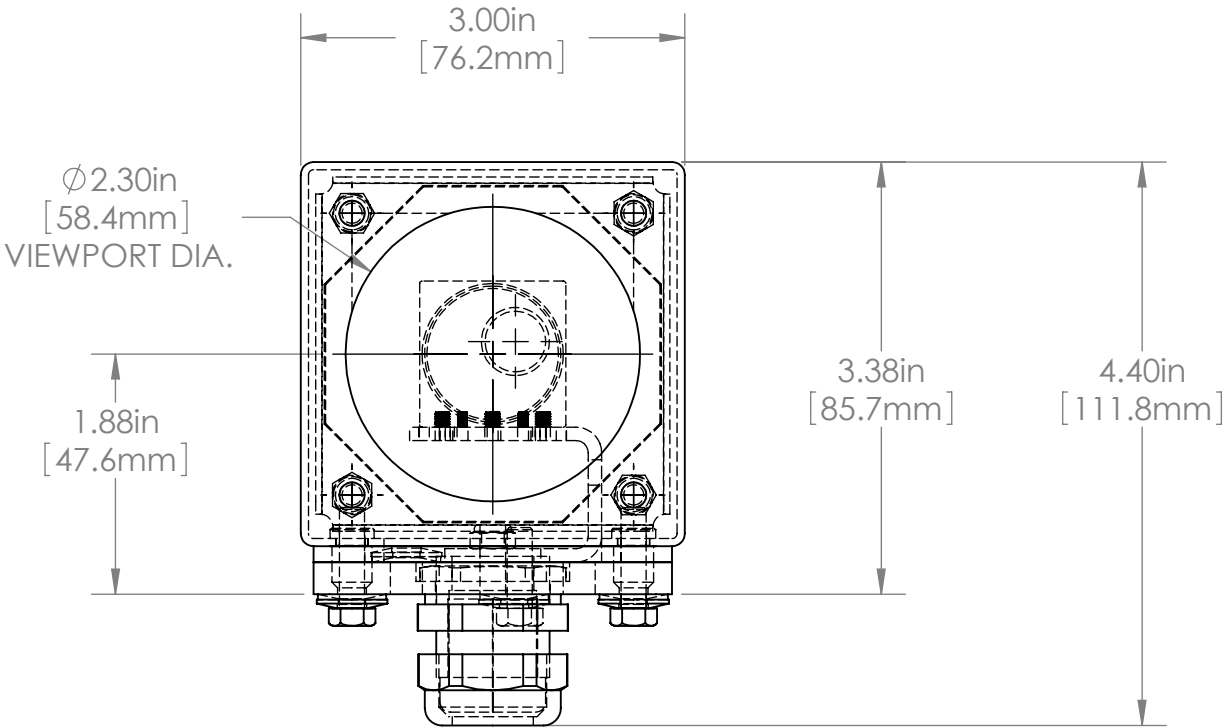
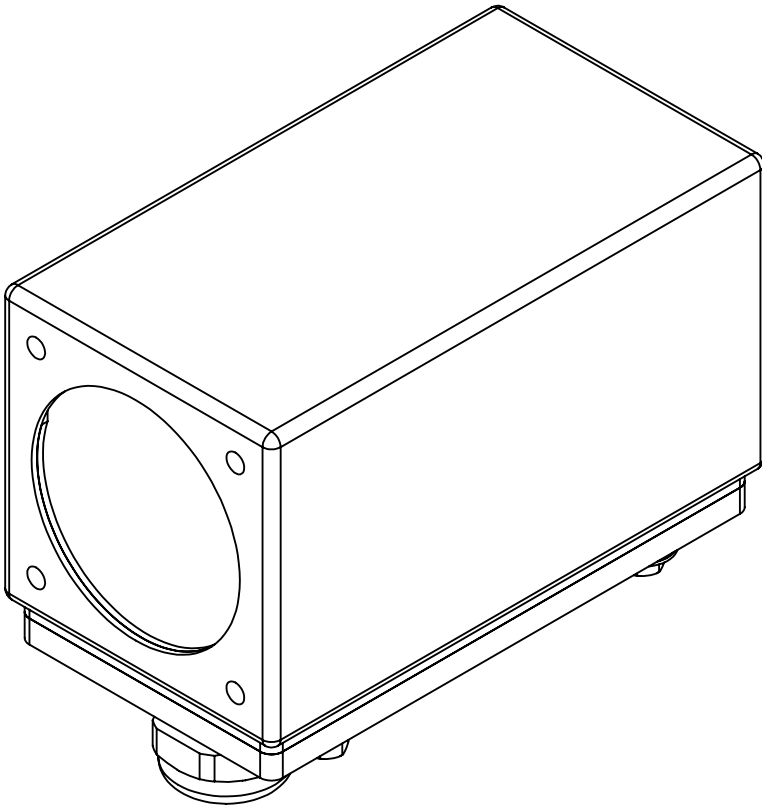
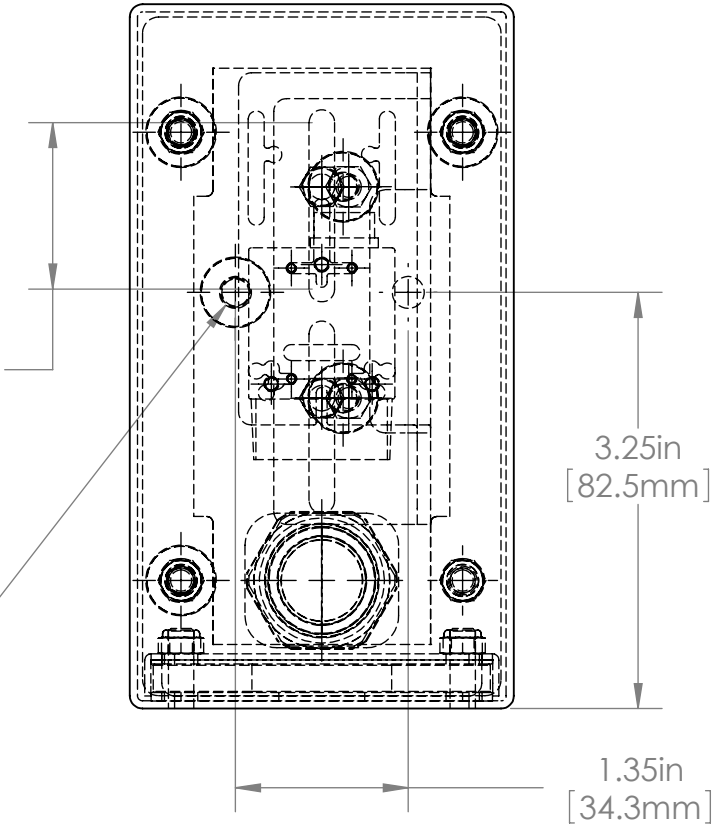
				UNLESS OTHERWISE SPECIFIED: DIMENSIONS ARE IN INCHES SURFACE FINISH: TOLERANCES: .000= +/- 0.005" .00= +/- 0.010"		FINISH: BURNISHED DEBUR AND BREAK SHARP EDGES		Allison Park Group, Inc. (APG) 4055 Alpha Drive Allison Park, PA 15101 USA		DO NOT SCALE DRAWING	REVISION
				LINEAR:				Phone +1 (412) 487-8211 Fax +1 (412) 486-3157		This document is the property of APG and is considered company confidential. The information in this document is the property of APG and may not be used, reproduced, or distributed in whole or in part without the prior written permission of APG	
					NAME	SIGNATURE	DATE	www.apgvision.com		TITLE:	
				DRAWN	SCHUBERT		3/28/2012			30S-AW (7.5in 2 AIR UNIVERSAL)	
				CHK'D							
				APPV'D							
				MFG							
				Q.A							
				NOTES:				MATERIAL: 316 STAINLESS STEEL BASE/BODY 40D SS PSA SILICONE GASKET		DWG NO.	
								WEIGHT:		30S-AW	
				NO.	CHANGE	DATE	INIT.			SCALE: 1:2	
										SHEET 1 OF 1	
										A3	



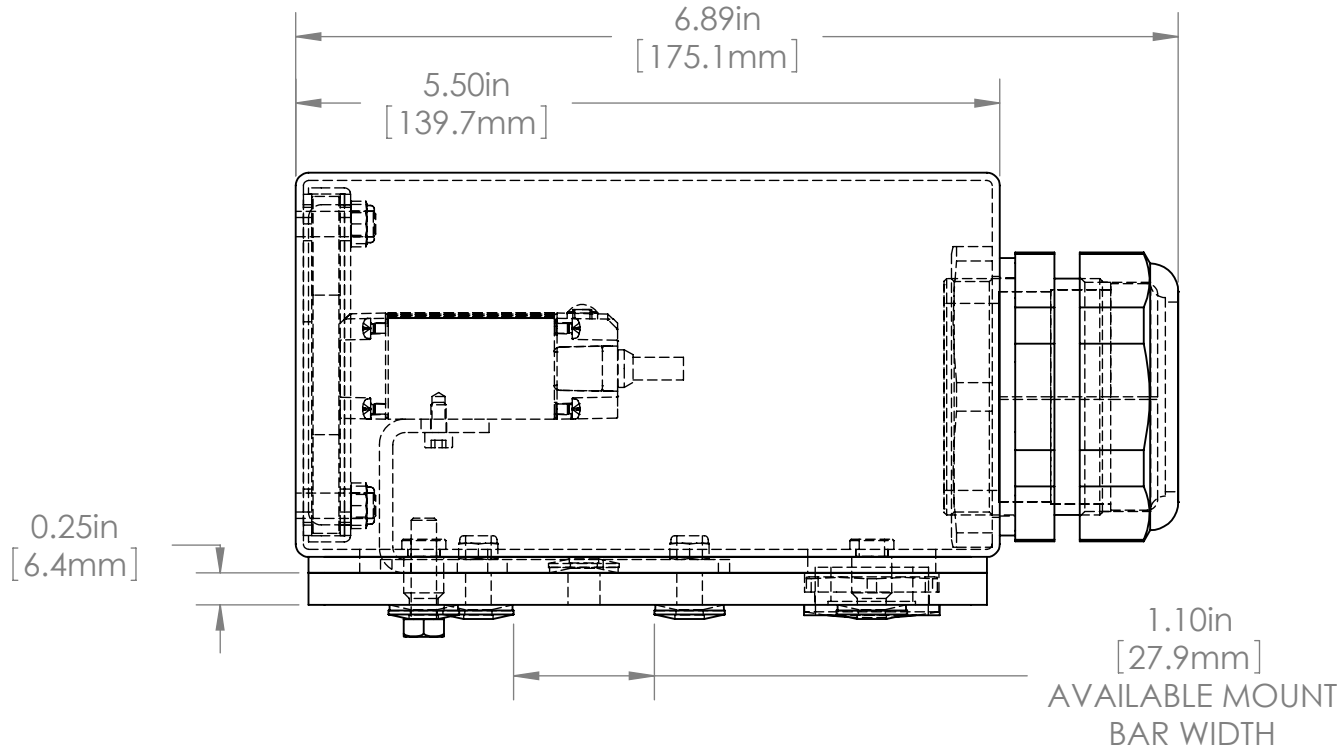
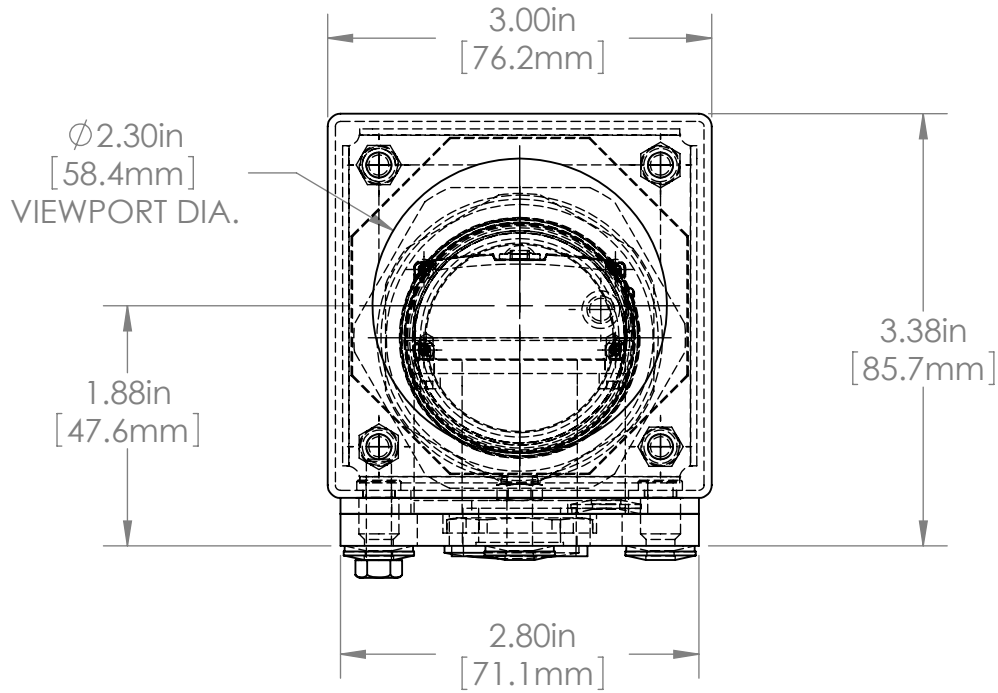
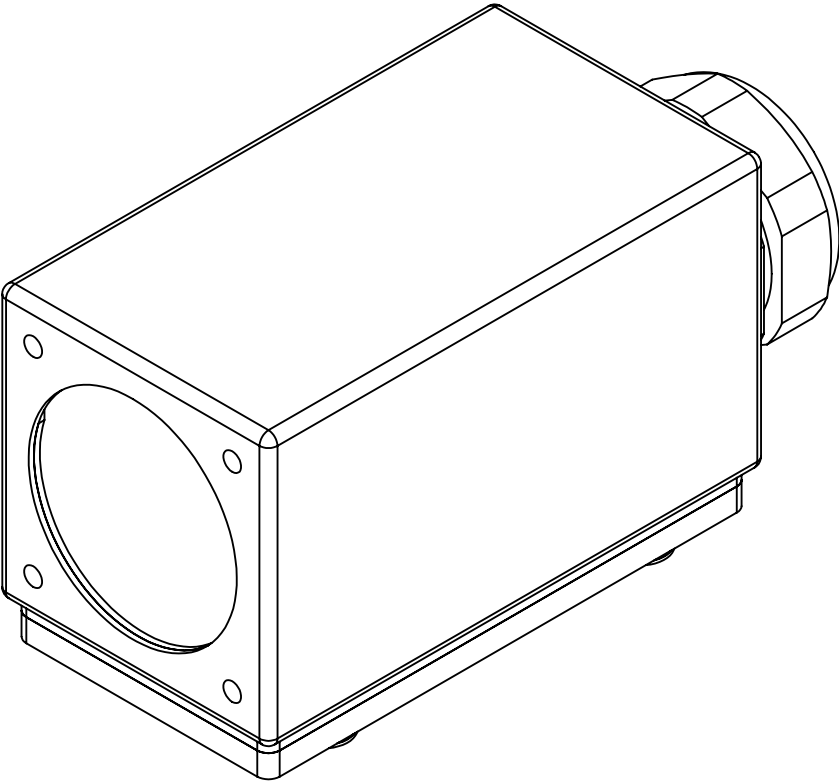
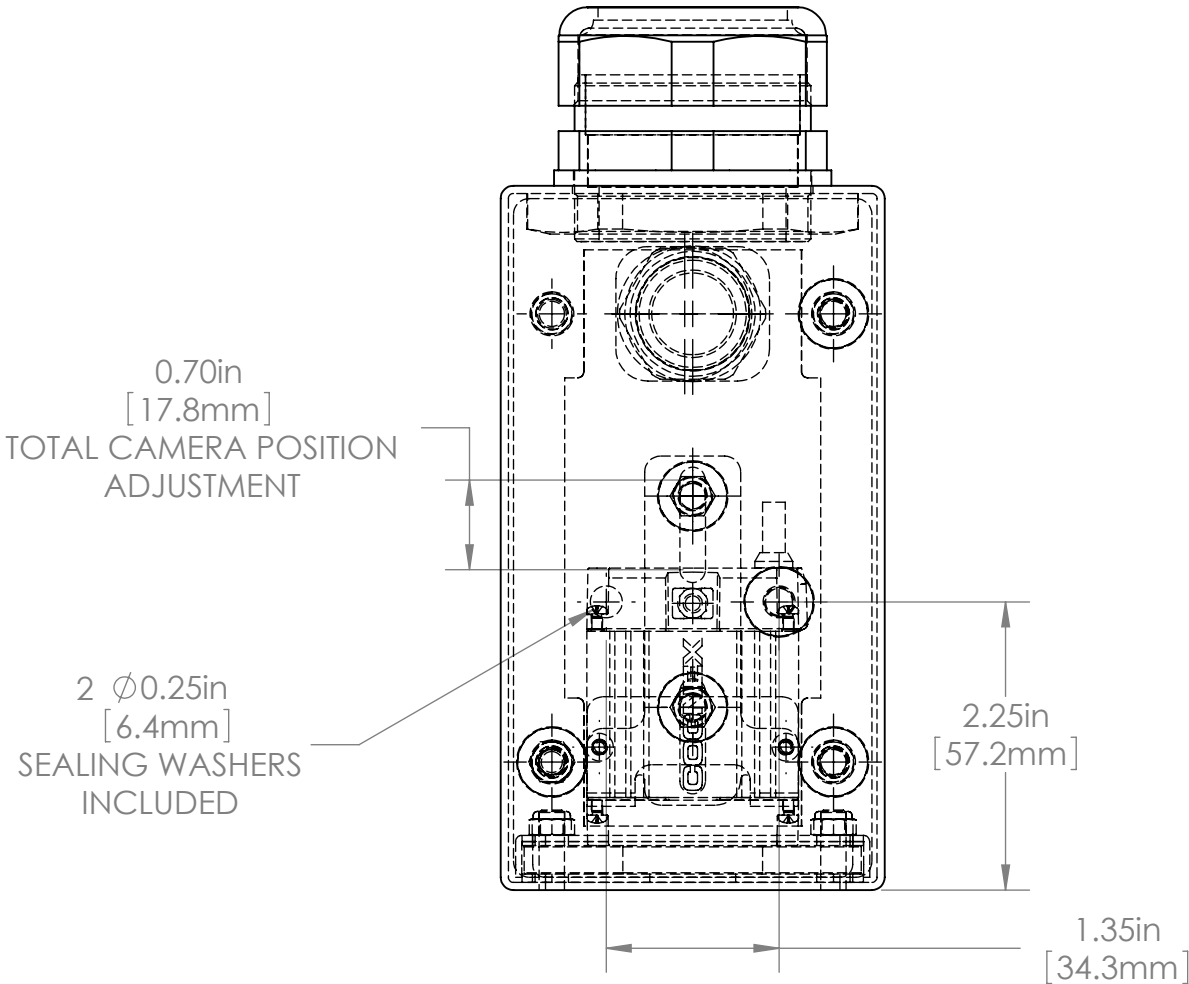
				UNLESS OTHERWISE SPECIFIED: DIMENSIONS ARE IN INCHES SURFACE FINISH: TOLERANCES: .000= +/- 0.005" .00= +/- 0.010"		FINISH: DEBUR AND BREAK SHARP EDGES		Allison Park Group, Inc. (APG) 4055 Alpha Drive Allison Park, PA 15101 USA		DO NOT SCALE DRAWING		REVISION			
				LINEAR:				Phone +1 (412) 487-8211 Fax +1 (412) 486-3157		This document is the property of APG and is considered company confidential. The information in this document is the property of APG and may not be used, reproduced, or distributed in whole or in part without the prior written permission of APG					
					NAME	SIGNATURE	DATE	www.apgvision.com		TITLE: 30S-BB ASSY DIMS					
				DRAWN	SCHUBERT		7/14/2010								
				CHK'D											
				APPV'D											
				MFG											
				Q.A						DWG NO.		30S-BB		A3	
				NOTES:				MATERIAL: 316 Stainless Steel							
NO.	CHANGE		DATE	INIT.					WEIGHT:		SCALE:1:2		SHEET 1 OF 1		

1.30in
[33mm]
TOTAL CAMERA
POSITION ADJUSTMENT

2 Ø0.25in
[6.4mm]
SEALING WASHERS
INCLUDED



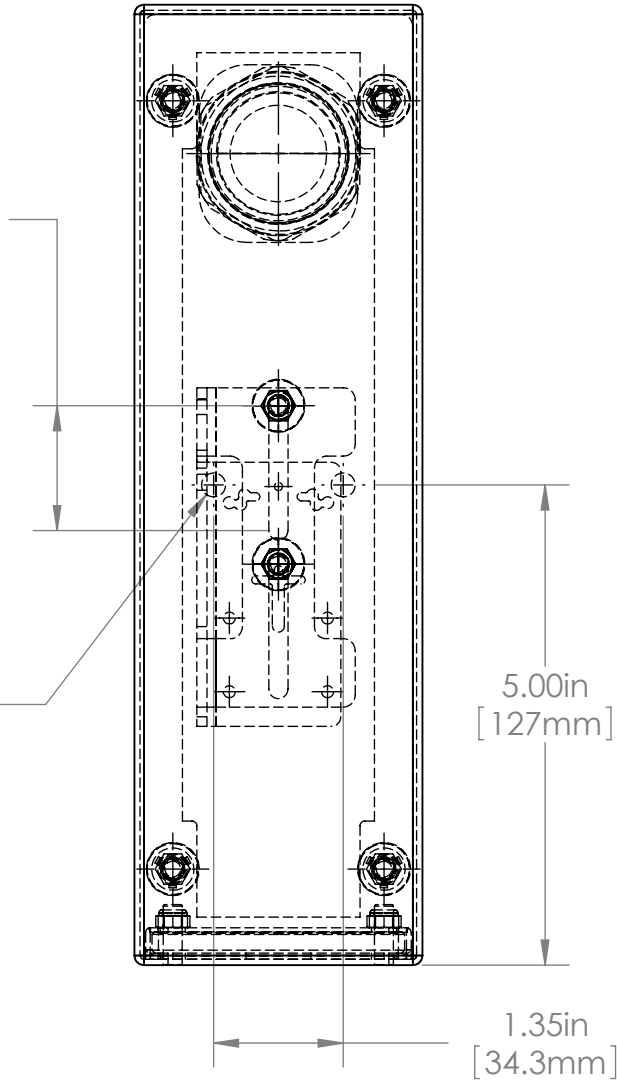
				UNLESS OTHERWISE SPECIFIED: DIMENSIONS ARE IN INCHES SURFACE FINISH: TOLERANCES: .000= +/- 0.005" .00= +/- 0.010"		FINISH: DEBUR AND BREAK SHARP EDGES		Allison Park Group, Inc. (APG) 4055 Alpha Drive Allison Park, PA 15101 USA		DO NOT SCALE DRAWING	REVISION
				LINEAR:				Phone +1 (412) 487-8211 Fax +1 (412) 486-3157		This document is the property of APG and is considered company confidential. The information in this document is the property of APG and may not be used, reproduced, or distributed in whole or in part without the prior written permission of APG	
					NAME	SIGNATURE	DATE	www.apgvision.com		TITLE: 30S-BF ASSY DIMS	
				DRAWN	SCHUBERT		7/14/2010				
				CHK'D							
				APPV'D							
				MFG							
				Q.A							
				NOTES:							
								MATERIAL: 316 Stainless Steel		DWG NO. 30S-BF	
								WEIGHT:		SCALE:1:2	
NO.	CHANGE	DATE	INIT.						SHEET 1 OF 1		A3



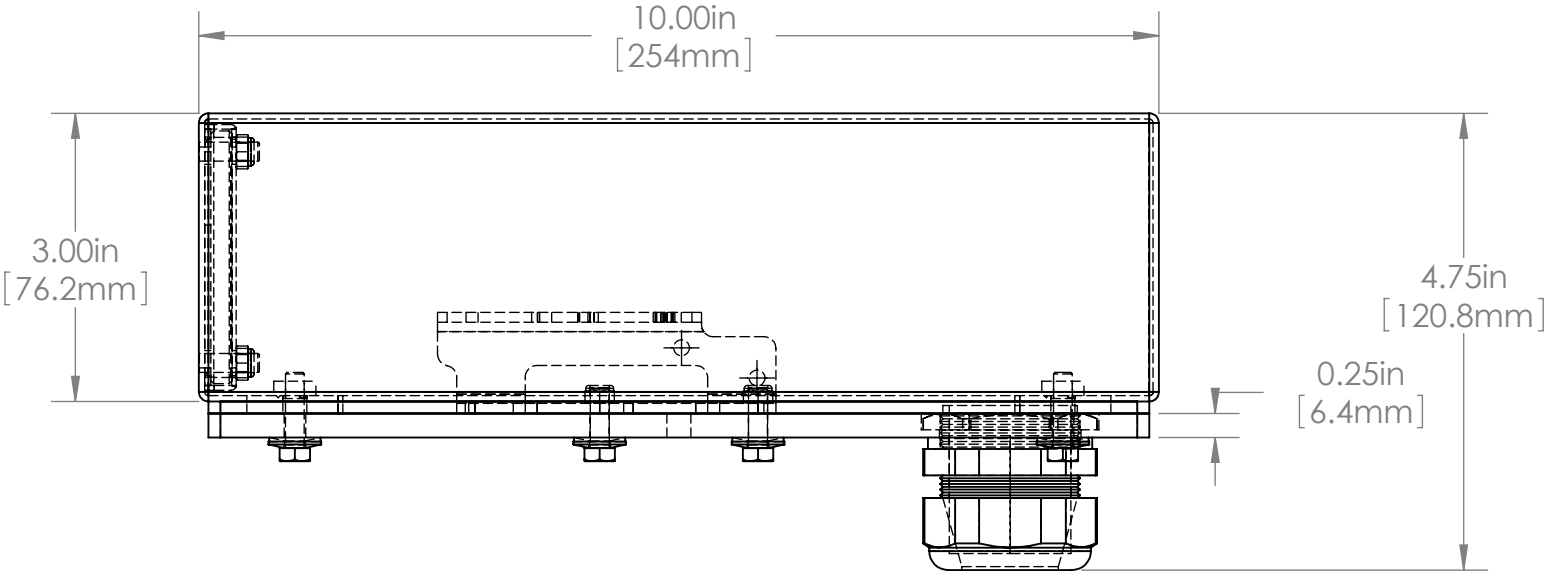
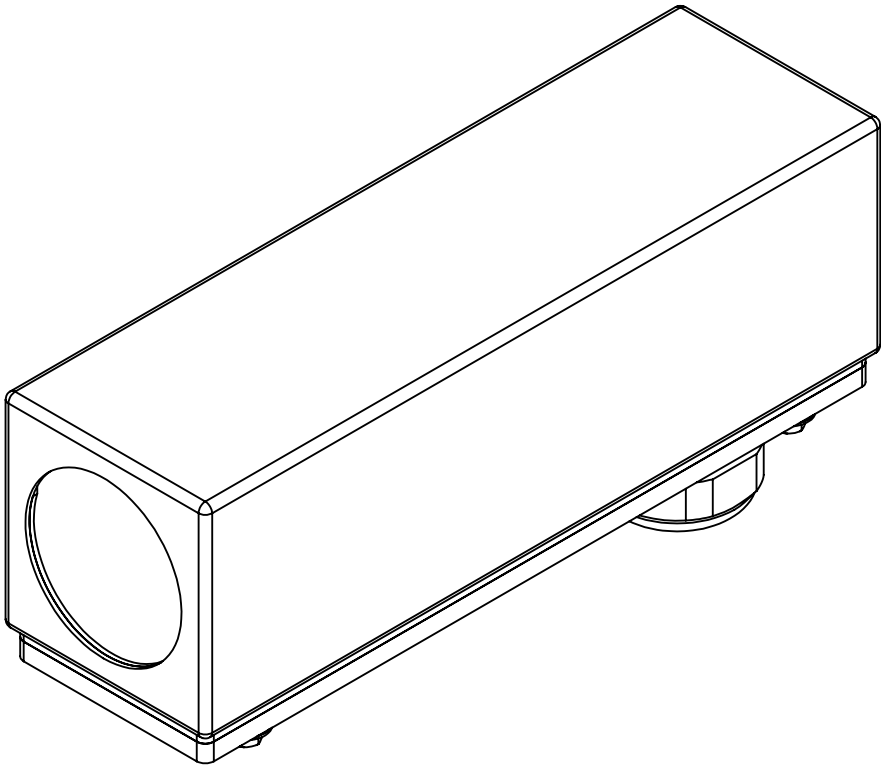
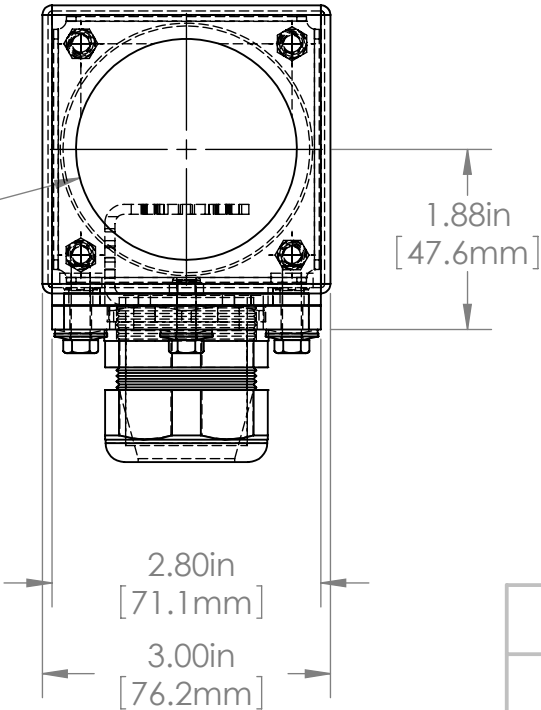
																																																																																																																																																																																																																																																																																																																																																																																																																																																																																																																																																																																																																																																																																																																																																																																																																																																																																																																																																																																																																																																																																																																																																																																																																																																																																																																																																																																																																																																																																																																																																	</
--	--	--	--	--	--	--	--	--	--	--	--	--	--	--	--	--	--	--	--	--	--	--	--	--	--	--	--	--	--	--	--	--	--	--	--	--	--	--	--	--	--	--	--	--	--	--	--	--	--	--	--	--	--	--	--	--	--	--	--	--	--	--	--	--	--	--	--	--	--	--	--	--	--	--	--	--	--	--	--	--	--	--	--	--	--	--	--	--	--	--	--	--	--	--	--	--	--	--	--	--	--	--	--	--	--	--	--	--	--	--	--	--	--	--	--	--	--	--	--	--	--	--	--	--	--	--	--	--	--	--	--	--	--	--	--	--	--	--	--	--	--	--	--	--	--	--	--	--	--	--	--	--	--	--	--	--	--	--	--	--	--	--	--	--	--	--	--	--	--	--	--	--	--	--	--	--	--	--	--	--	--	--	--	--	--	--	--	--	--	--	--	--	--	--	--	--	--	--	--	--	--	--	--	--	--	--	--	--	--	--	--	--	--	--	--	--	--	--	--	--	--	--	--	--	--	--	--	--	--	--	--	--	--	--	--	--	--	--	--	--	--	--	--	--	--	--	--	--	--	--	--	--	--	--	--	--	--	--	--	--	--	--	--	--	--	--	--	--	--	--	--	--	--	--	--	--	--	--	--	--	--	--	--	--	--	--	--	--	--	--	--	--	--	--	--	--	--	--	--	--	--	--	--	--	--	--	--	--	--	--	--	--	--	--	--	--	--	--	--	--	--	--	--	--	--	--	--	--	--	--	--	--	--	--	--	--	--	--	--	--	--	--	--	--	--	--	--	--	--	--	--	--	--	--	--	--	--	--	--	--	--	--	--	--	--	--	--	--	--	--	--	--	--	--	--	--	--	--	--	--	--	--	--	--	--	--	--	--	--	--	--	--	--	--	--	--	--	--	--	--	--	--	--	--	--	--	--	--	--	--	--	--	--	--	--	--	--	--	--	--	--	--	--	--	--	--	--	--	--	--	--	--	--	--	--	--	--	--	--	--	--	--	--	--	--	--	--	--	--	--	--	--	--	--	--	--	--	--	--	--	--	--	--	--	--	--	--	--	--	--	--	--	--	--	--	--	--	--	--	--	--	--	--	--	--	--	--	--	--	--	--	--	--	--	--	--	--	--	--	--	--	--	--	--	--	--	--	--	--	--	--	--	--	--	--	--	--	--	--	--	--	--	--	--	--	--	--	--	--	--	--	--	--	--	--	--	--	--	--	--	--	--	--	--	--	--	--	--	--	--	--	--	--	--	--	--	--	--	--	--	--	--	--	--	--	--	--	--	--	--	--	--	--	--	--	--	--	--	--	--	--	--	--	--	--	--	--	--	--	--	--	--	--	--	--	--	--	--	--	--	--	--	--	--	--	--	--	--	--	--	--	--	--	--	--	--	--	--	--	--	--	--	--	--	--	--	--	--	--	--	--	--	--	--	--	--	--	--	--	--	--	--	--	--	--	--	--	--	--	--	--	--	--	--	--	--	--	--	--	--	--	--	--	--	--	--	--	--	--	--	--	--	--	--	--	--	--	--	--	--	--	--	--	--	--	--	--	--	--	--	--	--	--	--	--	--	--	--	--	--	--	--	--	--	--	--	--	--	--	--	--	--	--	--	--	--	--	--	--	--	--	--	--	--	--	--	--	--	--	--	--	--	--	--	--	--	--	--	--	--	--	--	--	--	--	--	--	--	--	--	--	--	--	--	--	--	--	--	--	--	--	--	--	--	--	--	--	--	--	--	--	--	--	--	--	--	--	--	--	--	--	--	--	--	--	--	--	--	--	--	--	--	--	--	--	--	--	--	--	--	--	--	--	--	--	--	--	--	--	--	--	--	--	--	--	--	--	--	--	--	--	--	--	--	--	--	--	--	--	--	--	--	--	--	--	--	--	--	--	--	--	--	--	--	--	--	--	--	--	--	--	--	--	--	--	--	--	--	--	--	--	--	--	--	--	--	--	--	--	--	--	--	--	--	--	--	--	--	--	--	--	--	--	--	--	--	--	--	--	--	--	--	--	--	--	--	--	--	--	--	--	--	--	--	--	--	--	--	--	--	--	--	--	--	--	--	--	--	--	--	--	--	--	--	--	--	--	--	--	--	--	--	--	--	--	--	--	--	--	--	--	--	--	--	--	--	--	--	--	--	--	--	--	--	--	--	--	--	--	--	--	--	--	--	--	--	--	--	--	--	--	--	--	--	--	--	--	--	--	--	--	--	--	--	--	--	--	--	--	--	--	--	--	--	--	--	--	--	--	--	--	--	--	--	--	--	--	--	--	--	--	--	--	--	--	--	--	--	--	--	--	--	--	--	--	--	--	--	--	--	--	--	--	--	--	--	--	--	--	--	--	--	--	--	--	--	--	--	--	--	--	--	--	--	--	--	--	--	--	--	--	--	--	--	--	--	--	--	--	--	--	--	--	--	--	--	--	--	--	--	--	--	--	--	--	--	--	--	--	--	--	--	--	--	--	--	--	--	--	--	--	--	--	--	--	--	--	--	--	--	--	--	--	--	--	--	--	--	--	--	--	--	--	--	--	--	--	--	--	--	--	--	--	--	--	--	--	--	--	--	--	--	--	--	--	--	--	--	--	--	--	--	--	--	--	--	--	--	--	--	--	--	--	--	--	--	--	--	--	--	--	--	--	--	--	--	--	--	--	--	--	--	--	--	--	--	--	--	--	--	--	--	--	--	--	--	--	--	--	--	--	--	--	--	--	--	--	--	--	--	--	--	--	--	--	--	--	--	--	--	--	--	--	--	--	--	--	--	--	--	--	--	--	--	--	--	--	--	--	--	--	--	--	--	--	--	--	--	--	--	--	--	--	--	--	--	--	--	--	--	--	--	--	--	--	--	--	--	--	--	--	--	--	--	--	--	--	--	--	--	--	--	--	--	--	--	--	--	--	--	--	--	--	--	--	--	--	--	--	--	--	--	--	--	--	--	--	--	--	--	--	--	--	--	--	--	--	--	--	--	--	--	--	--	--	--	--	--	--	--	--	--	--	--	--	--	--	--	--	--	--	--	--	--	--	--	--	--	--	--	--	--	--	--	--	--	--	--	--	--	--	--	--	--	--	--	--	--	--	--	--	--	--	--	--	--	--	--	--	--	--	--	--	--	--	--	--	--	--	--	--	--	--	--	--	--	--	--	--	--	--	--	--	--	--	--	--	--	--	--	--	--	--	--	--	--	--	--	--	--	--	--	--	--	--	--	--	--	--	--	--	--	--	--	--	--	--	--	--	--	--	--	--	--	--	--	--	--	--	--	--	--	--	--	--	--	--	--	--	--	--	--	--	--	--	--	--	--	--	--	--	--	--	--	--	--	--	--	--	--	--	--	--	--	--	--	--	--	----

1.30in
[33mm]
TOTAL CAMERA
POSITION ADJUSTMENT

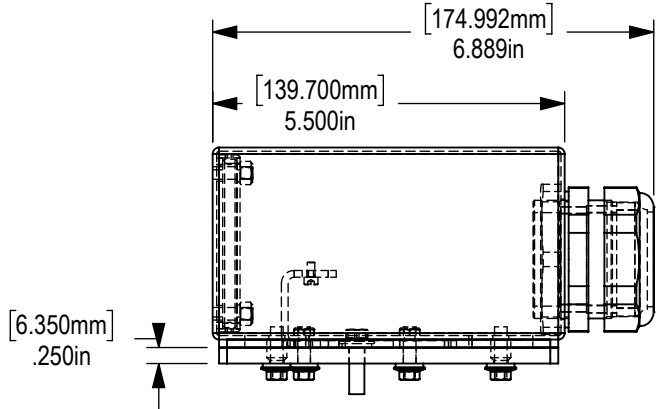
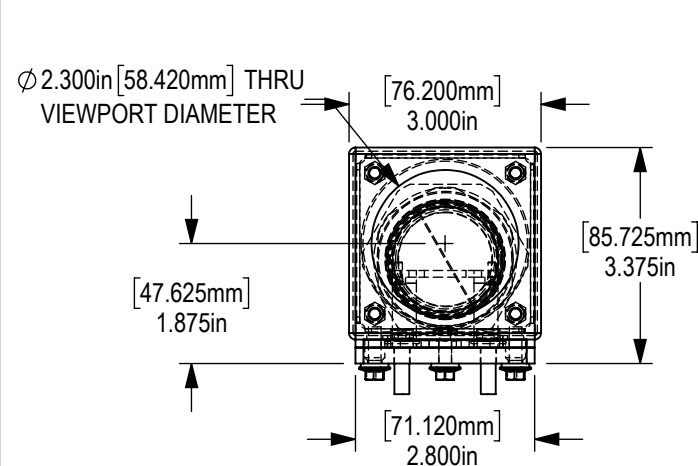
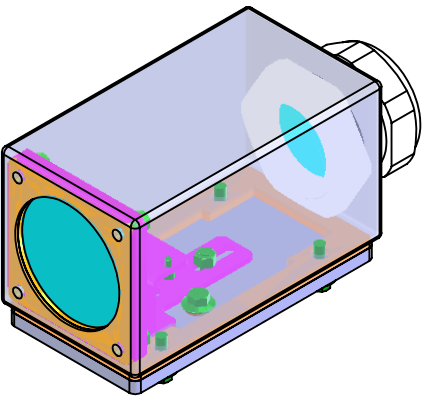
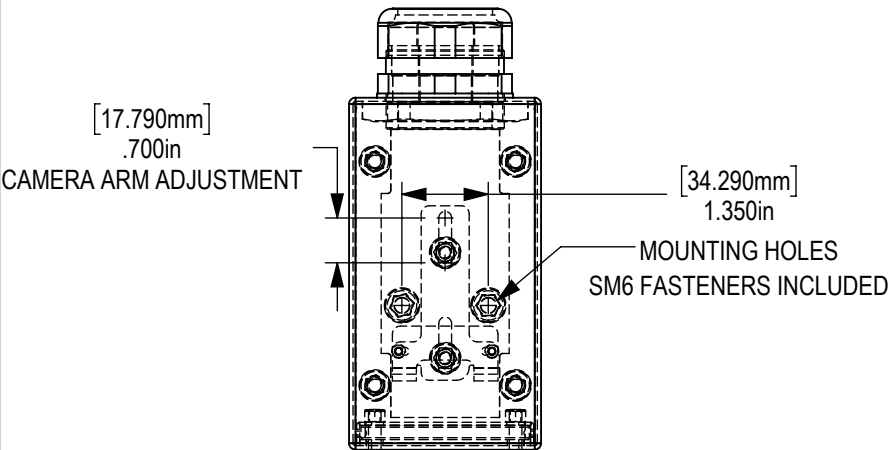
2 Ø0.25in
[6.4mm]
MOUNTING HOLES




Ø2.30in
[58.4mm]
VIEWPORT



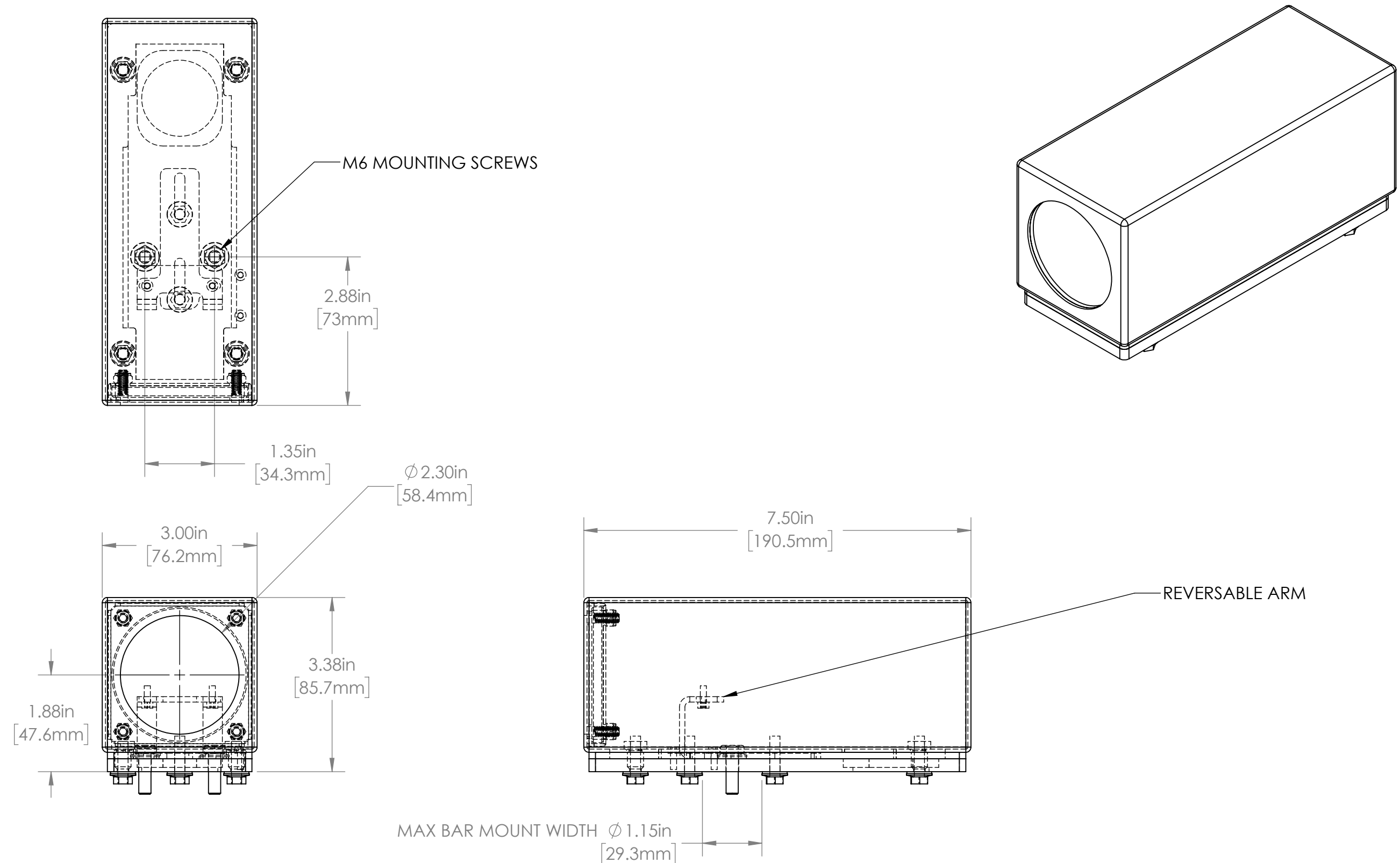
				UNLESS OTHERWISE SPECIFIED: DIMENSIONS ARE IN INCHES SURFACE FINISH: TOLERANCES: .000= +/- 0.005" .00= +/- 0.010"	FINISH:		Allison Park Group, Inc. (APG) 4055 Alpha Drive Allison Park, PA 15101 USA Phone +1 (412) 487-8211 Fax +1 (412) 486-3157 www.apgvision.com	DO NOT SCALE DRAWING	REVISION	
				LINEAR:	DEBUR AND BREAK SHARP EDGES			This document is the property of APG and is considered company confidential. The information in this document is the property of APG and may not be used, reproduced, or distributed in whole or in part without the prior written permission of APG		
					NAME	SIGNATURE		DATE	TITLE:	
				DRAWN	SCHUBERT			8/5/2010	WASHDOWN, UNIVERSAL ARM SHOWN WITH BASLER PILOT	
				CHK'D						
				APPV'D						
				MFG						
				Q.A						
				NOTES:			MATERIAL:	DWG NO.	A3	
							304 STAINLESS STEEL BODY 6061 T6 ALUMINUM BASE	30S-BJ		
							WEIGHT:	SCALE:1:5	SHEET 1 OF 1	
NO.	CHANGE	DATE	INIT.							



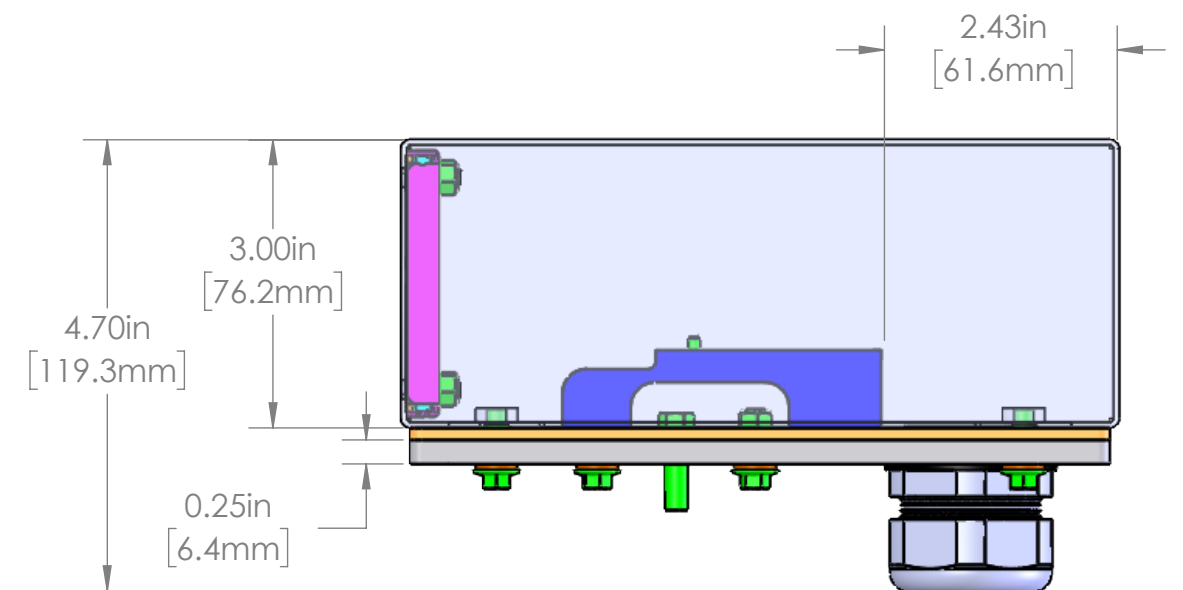
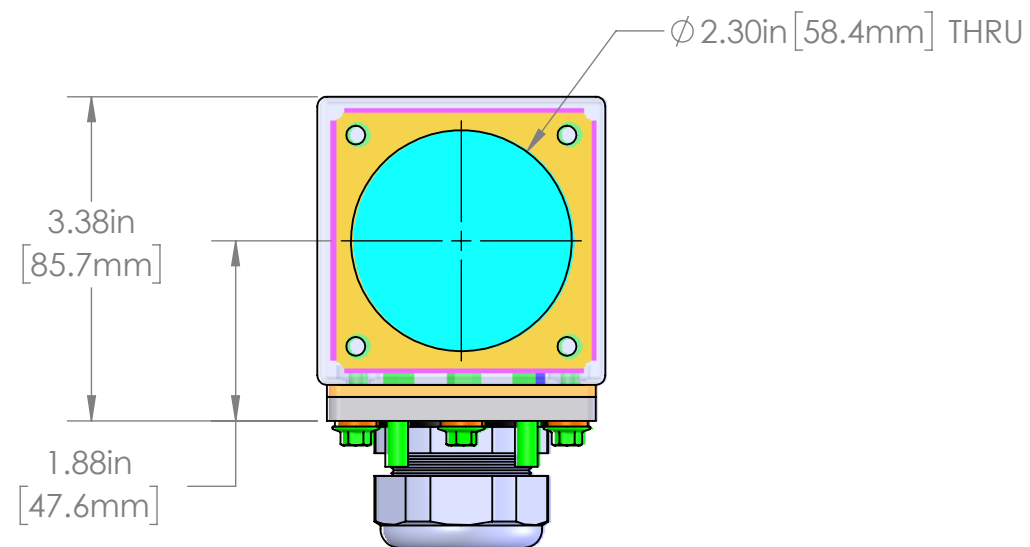
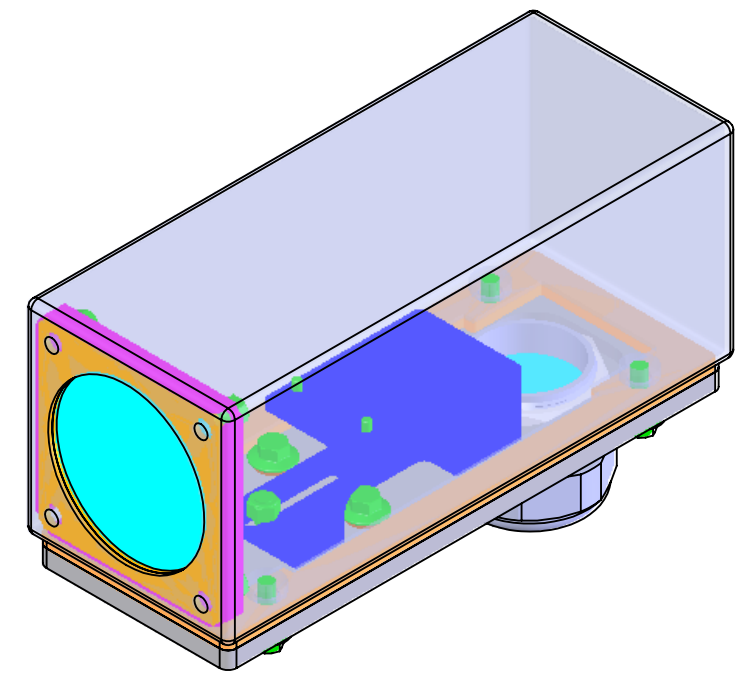
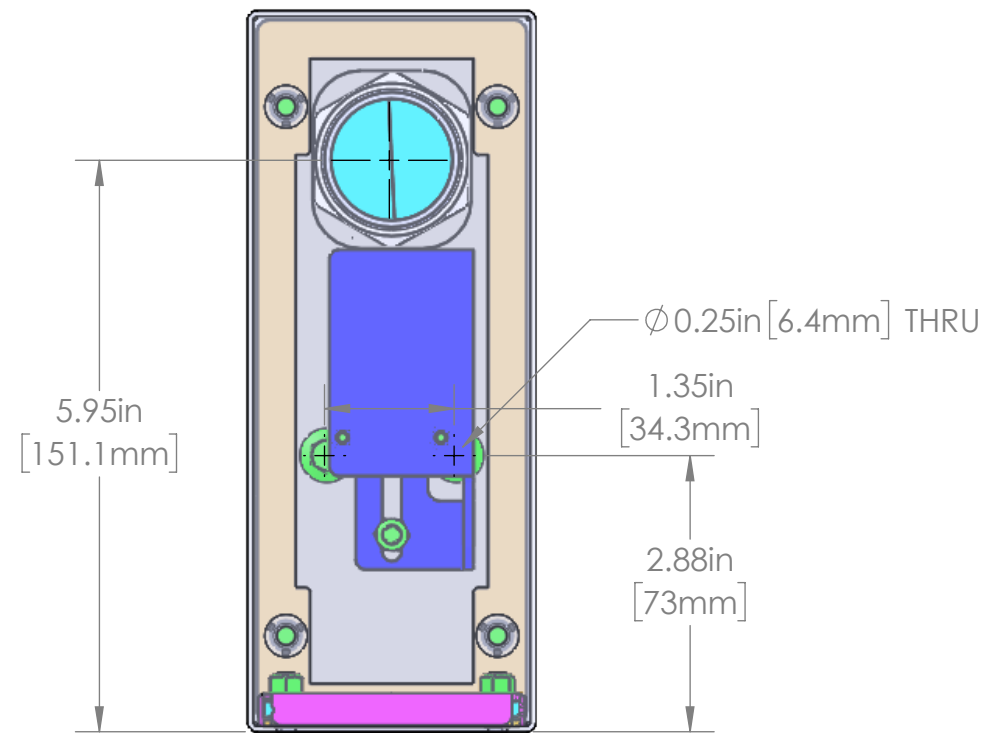
TOLERANCES UNLESS OTHERWISE SPECIFIED			
MACHINING		SHEETMETAL	
XX	0.0300	XX	± 0.0
XXX	0.0100	XXX	± 0.020
XXXX	0.0050	XXXX	NOTED
XXXXX	0.0005	XXXXX	ANGULAR 0.5°
ANGULAR	0.5°	DEBURR	ALL EDGES
DEBURR	ALL EDGES		
ALL WEIGHTS ARE IN POUNDS			
THIS PRINT IS THE PROPERTY OF ALLISON PARK GROUP. THE INFORMATION CONTAINED HEREIN IS CONFIDENTIAL. IT IS NOT TRANSFERABLE. IT IS FURNISHED WITH THE CLEAR UNDERSTANDING THAT IT IS NOT TO BE TRACED, REPRODUCED OR USED IN ANY PROCESS OF MANUFACTURING WITHOUT WRITTEN PERMISSION FROM THE OWNER AND IS RETURNABLE UPON DEMAND. ANY INFRINGEMENT UPON THE PATENT RIGHTS SHOWN HEREIN, WHETHER IN PART OR WHOLE, WILL BE PROSECUTED. AS PART OF OUR POLICY OF CONTINUING DEVELOPMENT, ALLISON PARK GROUP RESERVES THE RIGHT TO ALTER SPECIFICATIONS WITHOUT PRIOR NOTICE.			

		Allison Park Group, Inc (APG) 4055 Alpha Drive Allison Park, PA 15101 USA Phone +1 (412) 487-8211 Fax +1 (412) 486-3157	
DESCRIPTION:			
30S-BL (5-5 Dataman Glass PG36) DIMS			
MATERIAL:		APPROX. WEIGHT	
FINISH:		0.72	
DRAWN BY:	DATE:	SCALE:	SHT-SIZE:
AW	7/2/2018	NTS	A
CHECKED BY:	DATE:	PART NUMBER:	REVISION
APPROVED BY:	DATE:	30S-BL	A
		Sheet 1 of 1	

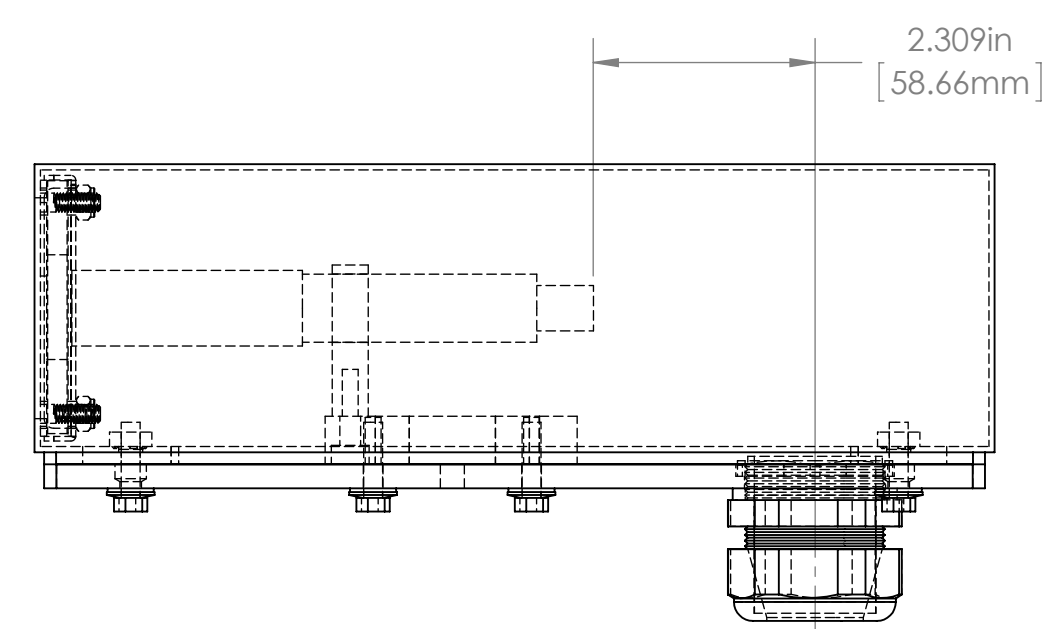
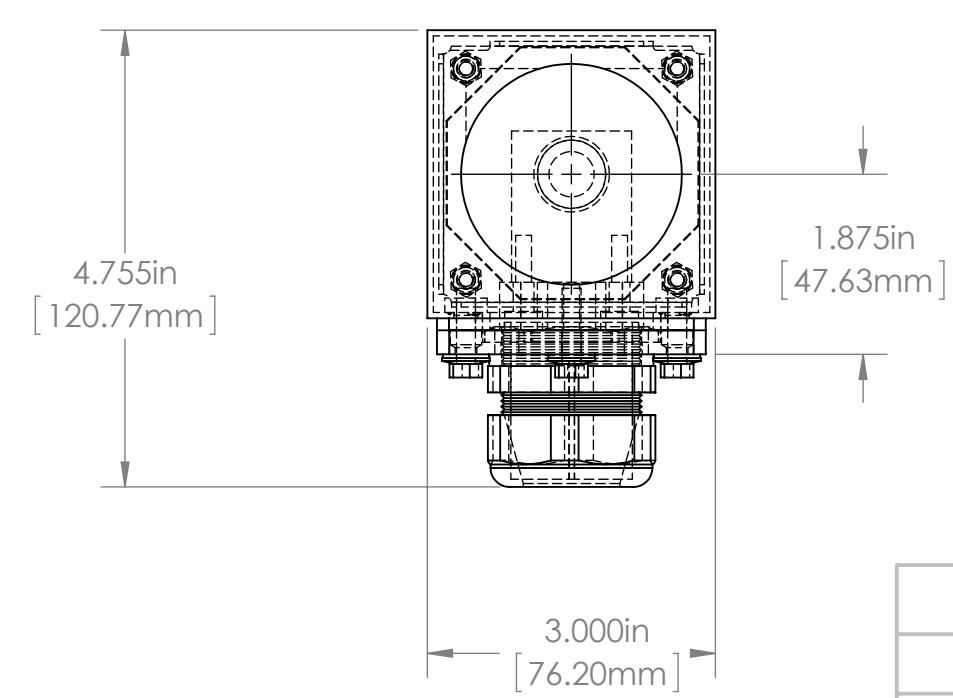
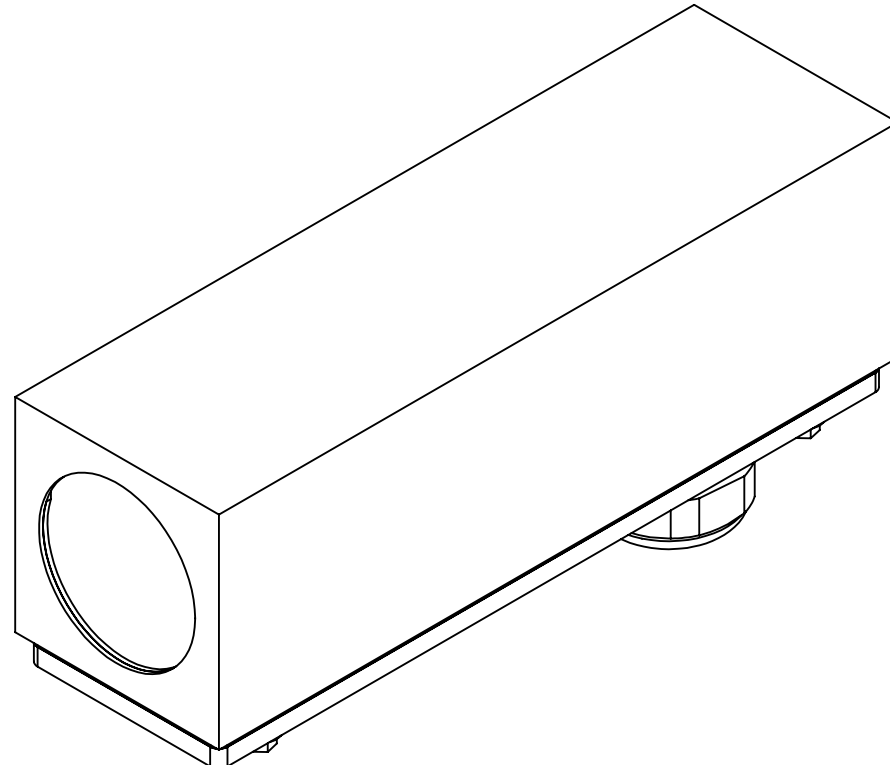
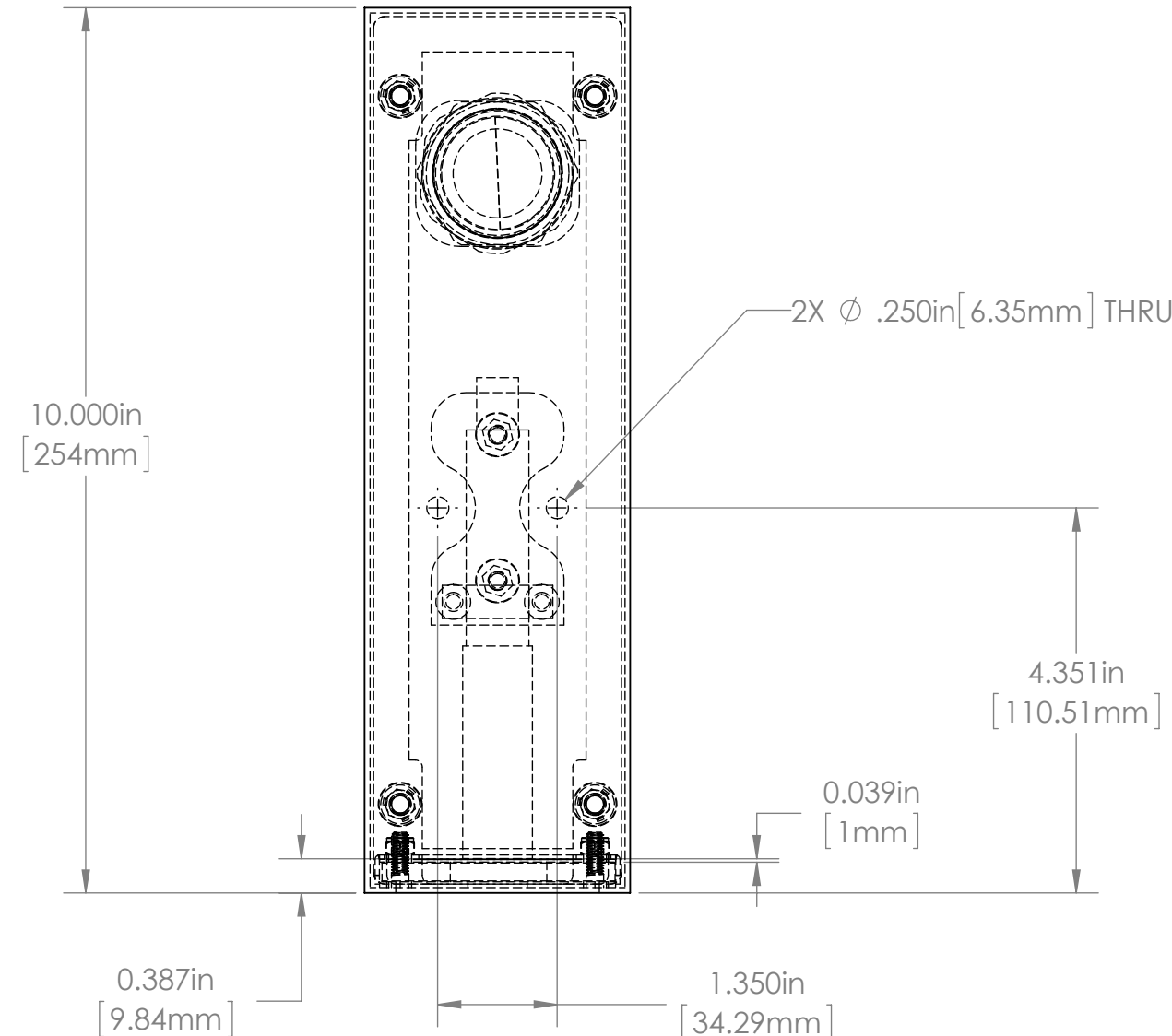
A	RELEASED FOR PRODUCTION			
REV.	DESCRIPTION	DATE	REV. BY	APPR. BY
REVISIONS				



				UNLESS OTHERWISE SPECIFIED: DIMENSIONS ARE IN INCHES SURFACE FINISH: TOLERANCES: .000= +/- 0.005" .00= +/- 0.010"		FINISH: BURNISHED		Allison Park Group, Inc. (APG) 4055 Alpha Drive Allison Park, PA 15101 USA		DO NOT SCALE DRAWING		REVISION		
				LINEAR:		DEBUR AND BREAK SHARP EDGES		Phone +1 (412) 487-8211 Fax +1 (412) 486-3157		This document is the property of APG and is considered company confidential. The information in this document is the property of APG and may not be used, reproduced, or distributed in whole or in part without the prior written permission of APG				
					NAME	SIGNATURE	DATE	www.apgvision.com		TITLE: 30S-BP ASSY DIMS				
				DRAWN	SCHUBERT		7/28/2016							
				CHK'D										
				APPV'D										
				MFG										
				Q.A										
				NOTES:				MATERIAL: 316 Stainless Steel BODY AND BASE		DWG NO.		A3		
								WEIGHT:		SCALE:1:2		SHEET 1 OF 1		
NO.	CHANGE		DATE	INIT.										



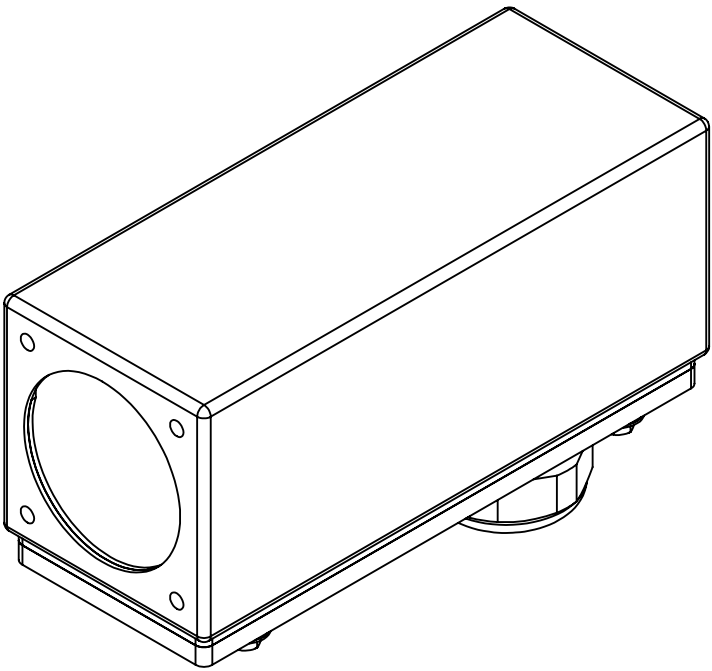
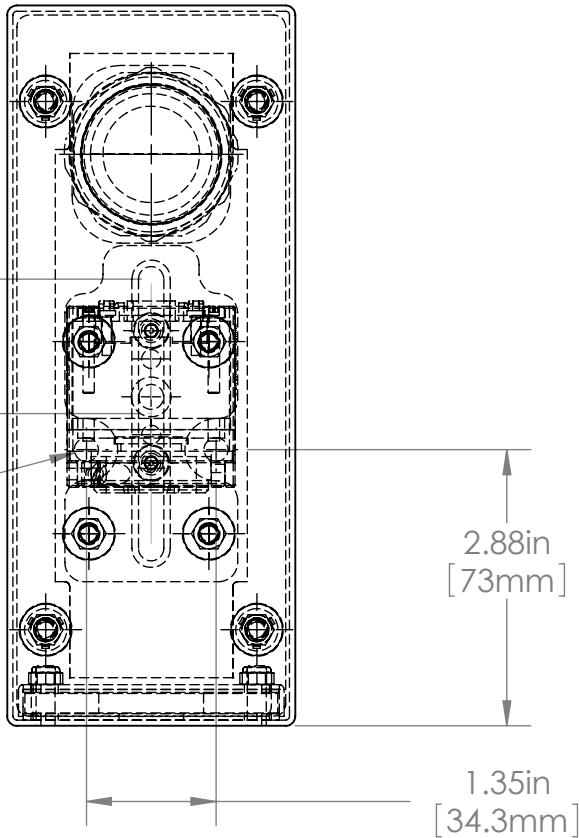
				UNLESS OTHERWISE SPECIFIED: DIMENSIONS ARE IN INCHES SURFACE FINISH: TOLERANCES: .000= +/- 0.005" .00= +/- 0.010"		FINISH: DEBUR AND BREAK SHARP EDGES		Allison Park Group, Inc. (APG) 4055 Alpha Drive Allison Park, PA 15101 USA		DO NOT SCALE DRAWING		REVISION	
				LINEAR:				Phone +1 (412) 487-8211 Fax +1 (412) 486-3157 www.apgvision.com		This document is the property of APG and is considered company confidential. The information in this document is the property of APG and may not be used, reproduced, or distributed in whole or in part without the prior written permission of APG			
					NAME	SIGNATURE	DATE	TITLE: 30S-BS ASSY DIMS					
				DRAWN	AW		5/22/2018						
				CHK'D									
				APPV'D									
				MFG									
				Q.A				MATERIAL:		DWG NO.		A3	
				NOTES:						30S-BS			
NO.	CHANGE	DATE	INIT.					WEIGHT: 0.730		SCALE:1:2		SHEET 1 OF 1	



				UNLESS OTHERWISE SPECIFIED: DIMENSIONS ARE IN INCHES SURFACE FINISH: TOLERANCES: .000= +/- 0.005" .00= +/- 0.010"				FINISH: BURNISHED		Allison Park Group, Inc. (APG) 4055 Alpha Drive Allison Park, PA 15101 USA				DO NOT SCALE DRAWING		REVISION			
				LINEAR:				DEBUR AND BREAK SHARP EDGES		Phone +1 (412) 487-8211 Fax +1 (412) 486-3157 www.apgvision.com				This document is the property of APG and is considered company confidential. The information in this document is the property of APG and may not be used, reproduced, or distributed in whole or in part without the prior written permission of APG					
				NAME		SIGNATURE		DATE		TITLE: 30S-DE Laser arm Sealed PG29 Acrylic									
DRAWN						8/21/2013													
CHK'D																			
APPV'D																			
MFG																			
				Q.A						MATERIAL: BODY 316 STAINLESS STEEL BASE 316 STAINLESS STEEL GASKET SILICONE				DWG NO. 30S-DE				A3	
				NOTES:															
NO.		CHANGE		DATE		INIT.		WEIGHT:				SCALE:1:5				SHEET 1 OF 1			

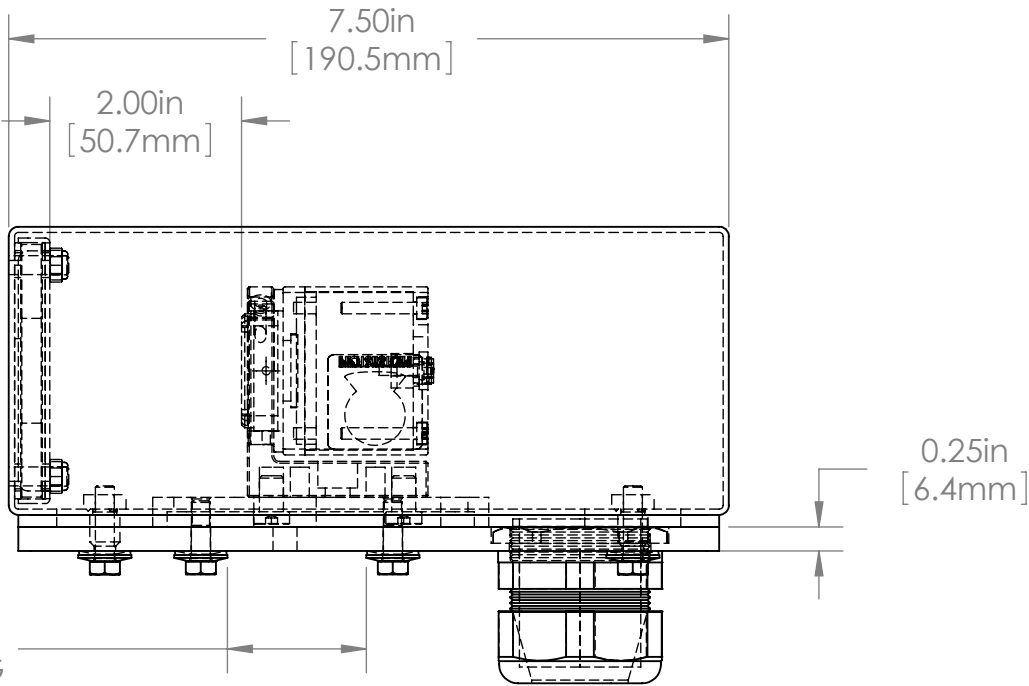
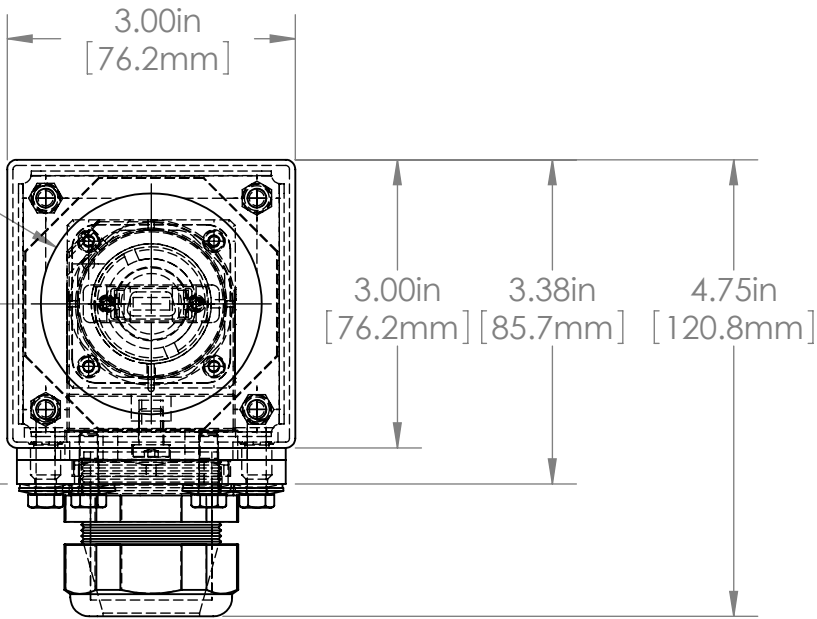
1.40in
[35.6mm]
TOTAL CAMERA
POSITION ADJUSTMENT

2 Ø0.25in
[6.4mm]
SEALING WASHERS
INCLUDED



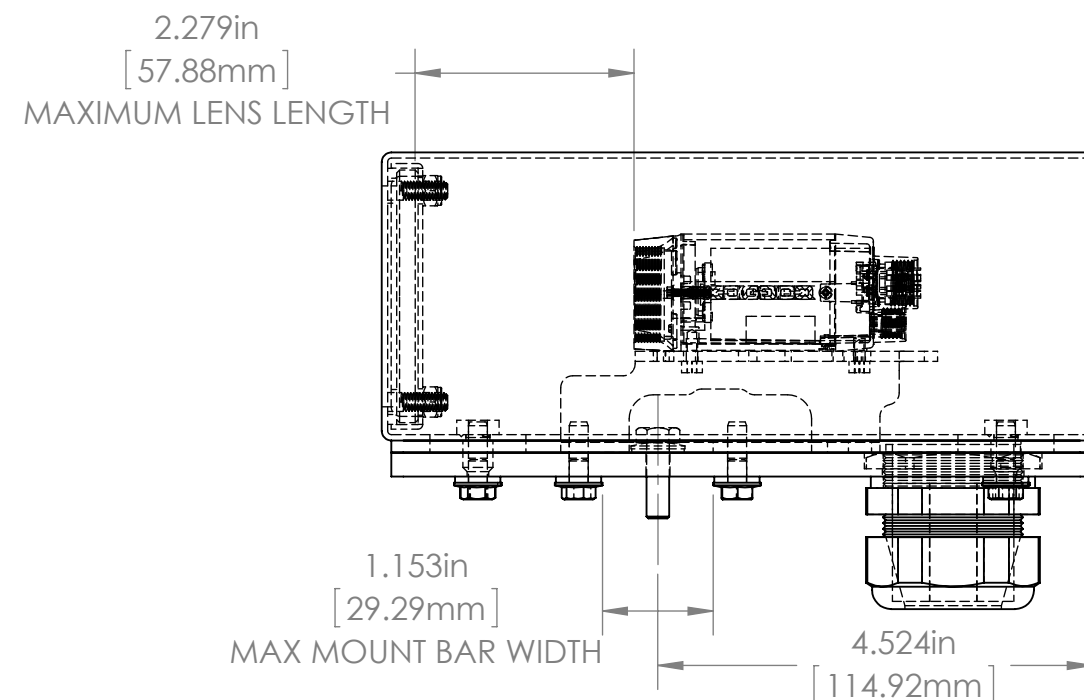
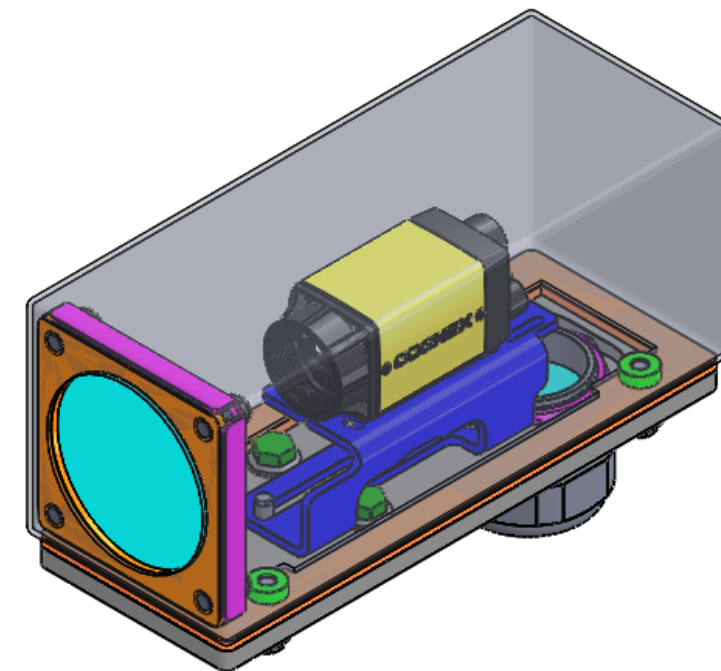
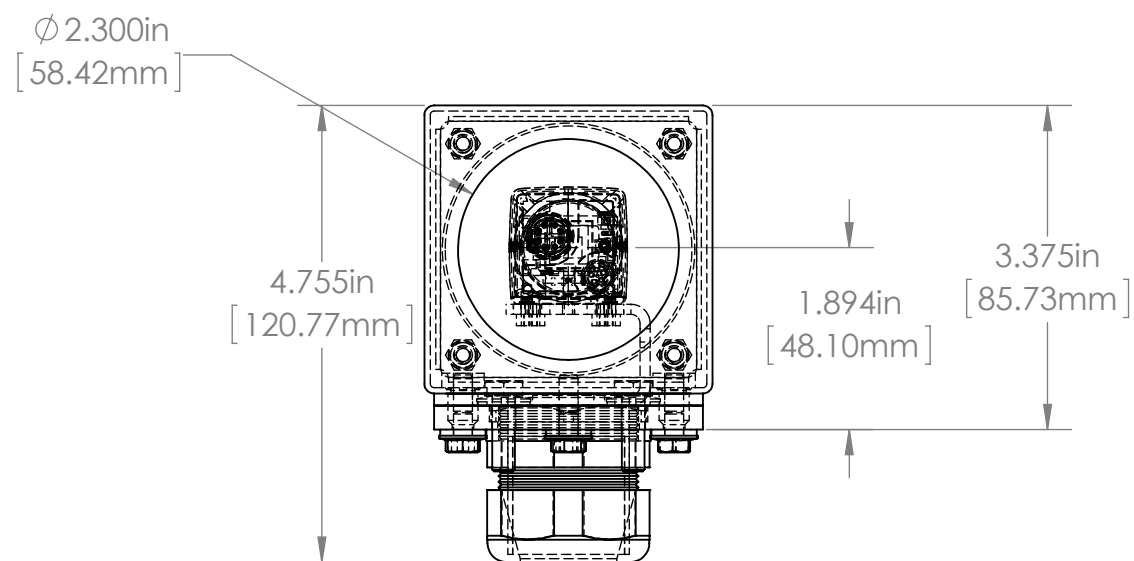
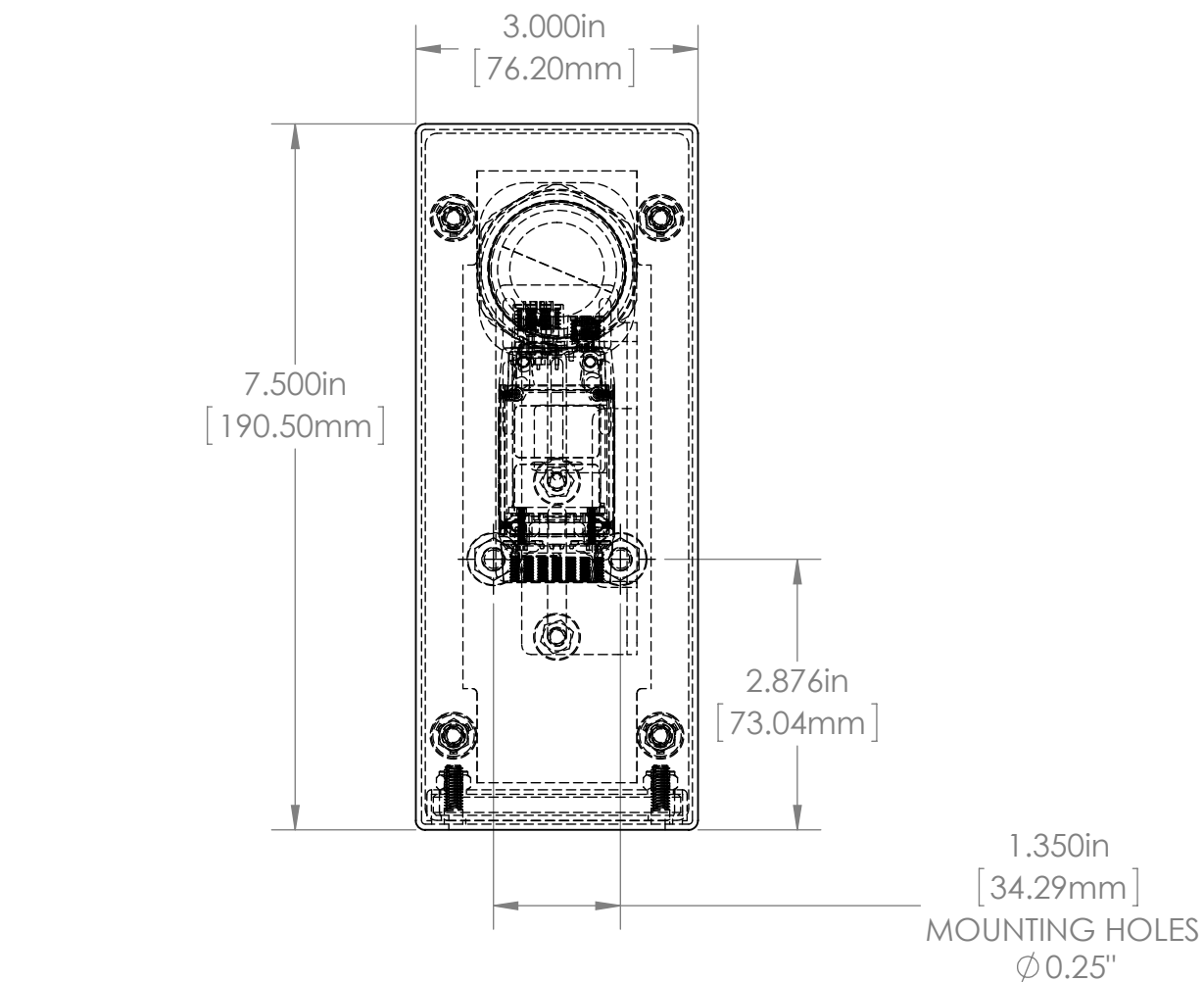
Ø2.30in
[58.4mm]
VIEWPORT DIA.

1.88in
[47.6mm]

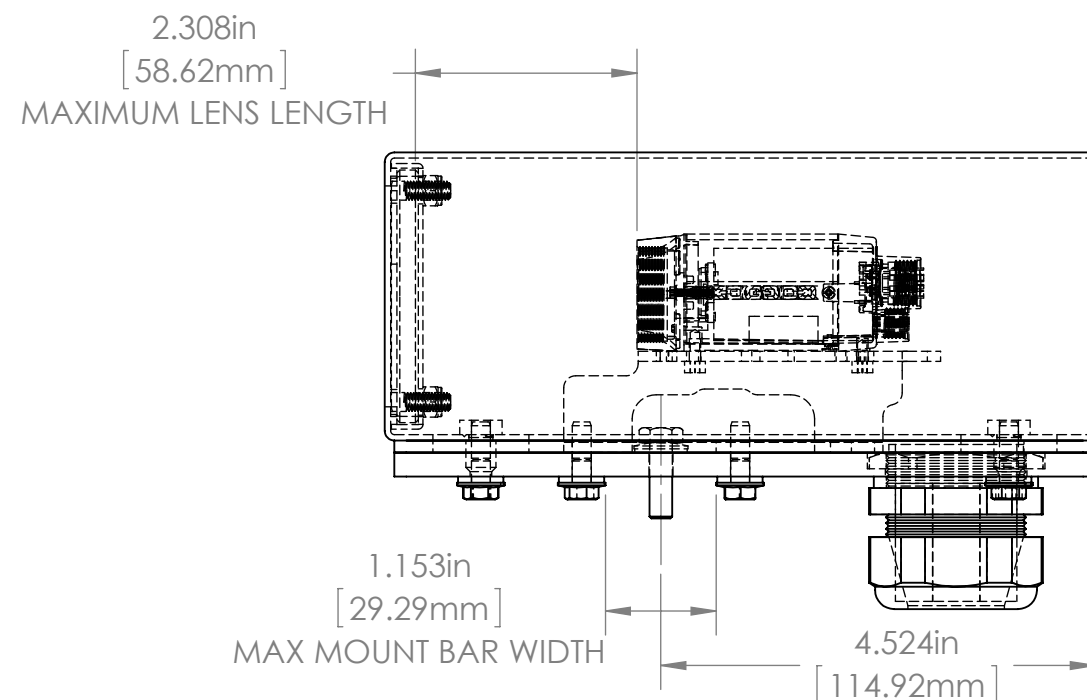
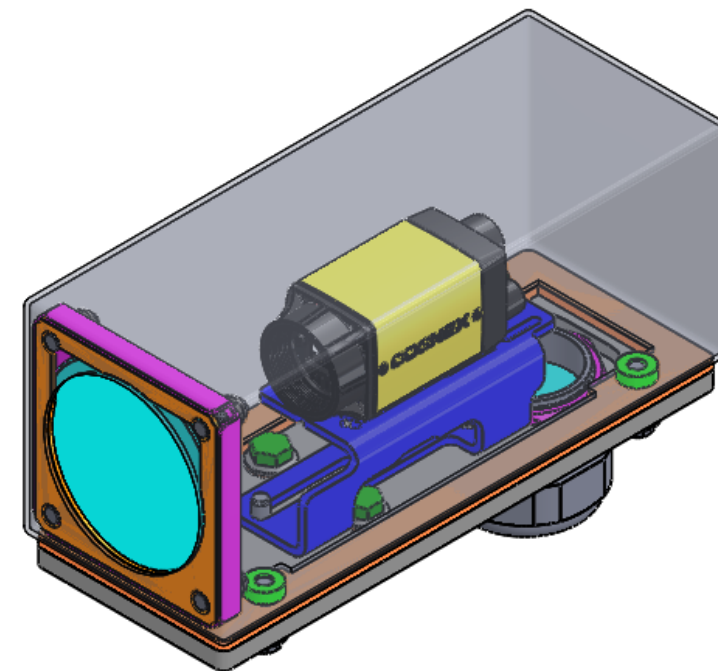
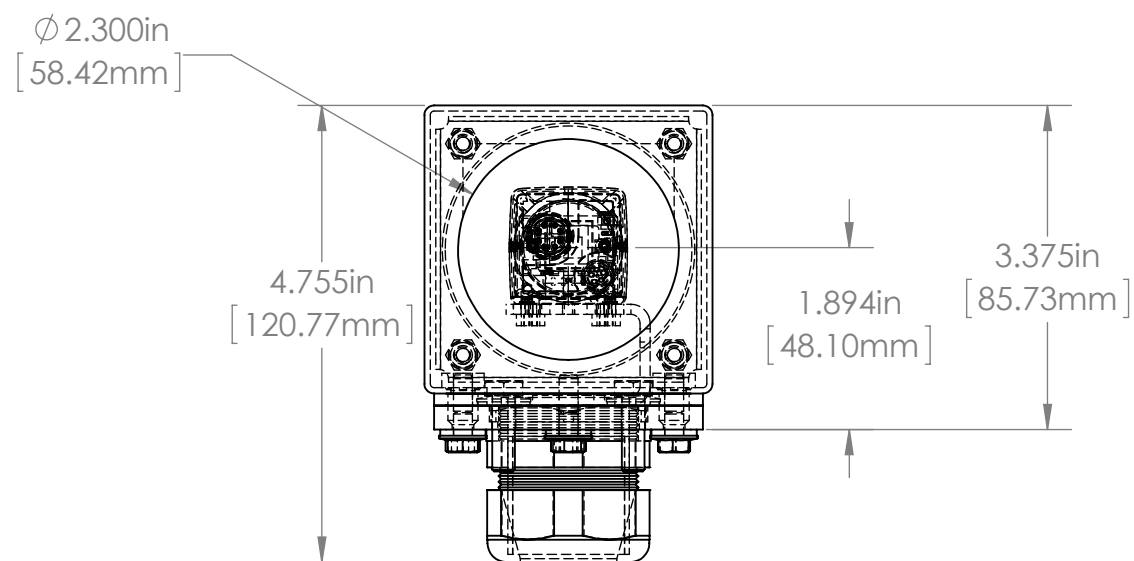
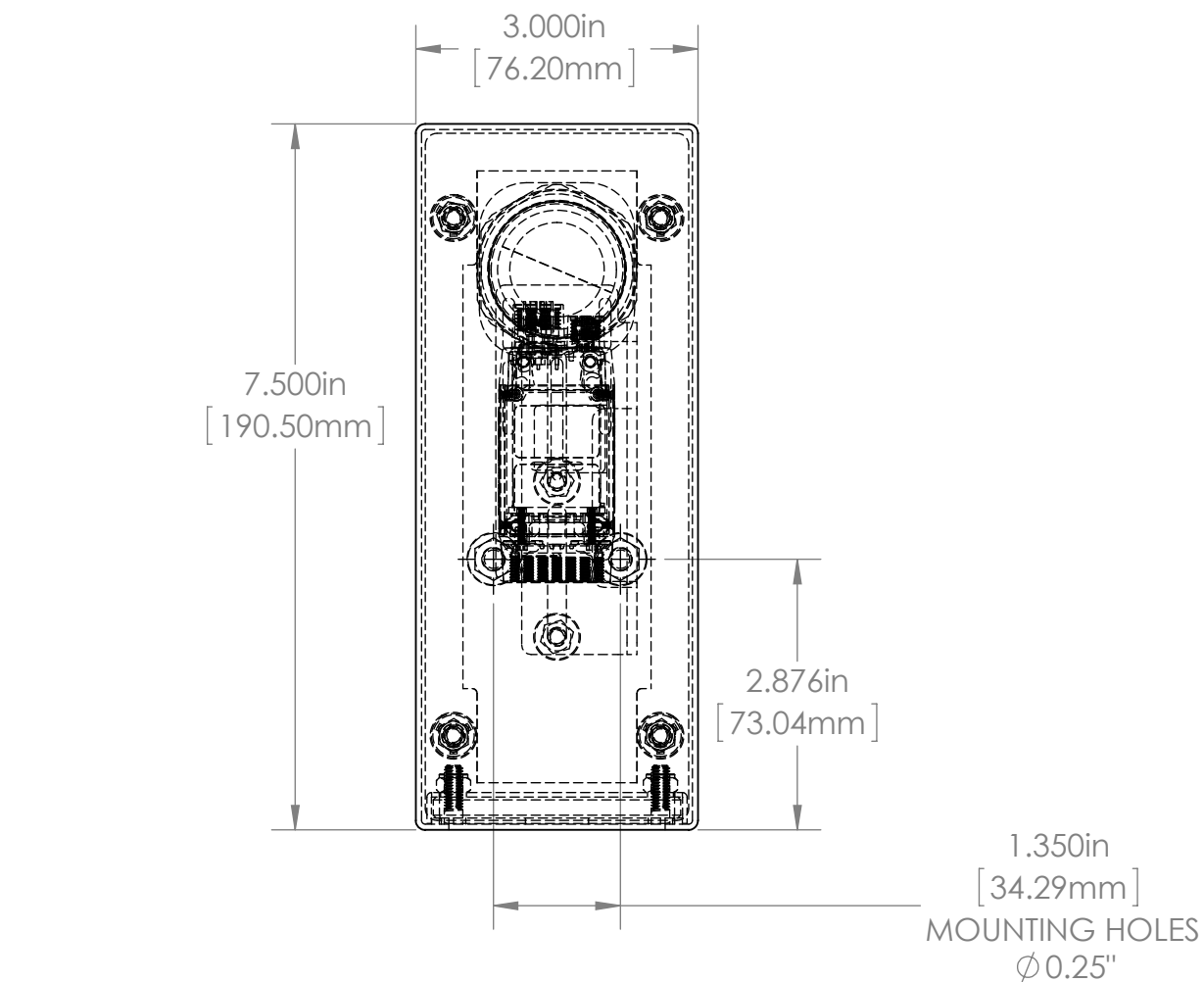


1.45in
[36.8mm]
AVAILABLE MOUNTING
BAR WIDTH

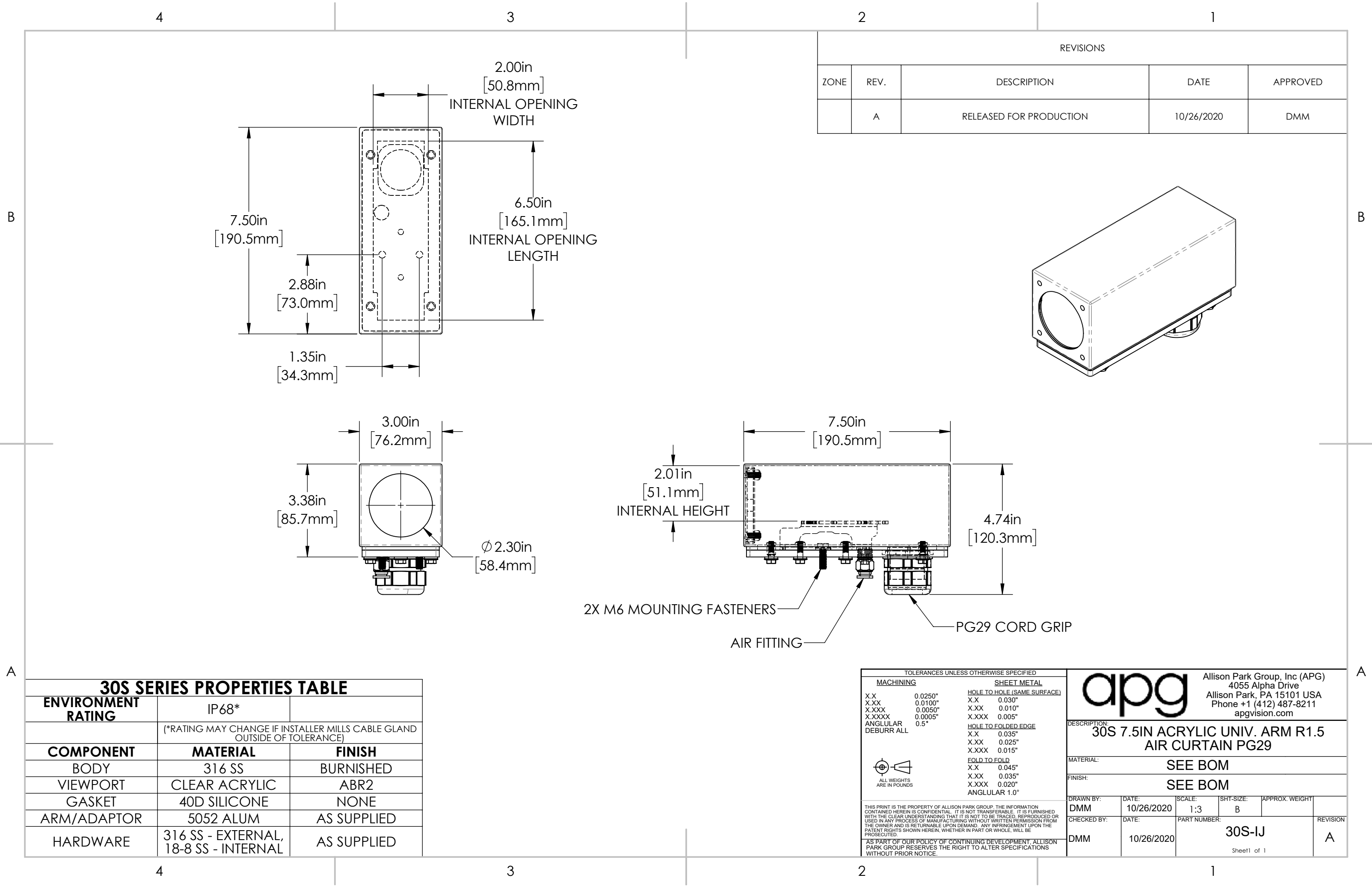
				UNLESS OTHERWISE SPECIFIED: DIMENSIONS ARE IN INCHES SURFACE FINISH: TOLERANCES: .000= +/- 0.005" .00= +/- 0.010"		FINISH: DEBUR AND BREAK SHARP EDGES		Allison Park Group, Inc. (APG) 4055 Alpha Drive Allison Park, PA 15101 USA		DO NOT SCALE DRAWING		REVISION		
				LINEAR:				Phone +1 (412) 487-8211 Fax +1 (412) 486-3157		This document is the property of APG and is considered company confidential. The information in this document is the property of APG and may not be used, reproduced, or distributed in whole or in part without the prior written permission of APG				
					NAME	SIGNATURE	DATE	www.apgvision.com		TITLE:				
				DRAWN	SCHUBERT		7/15/2010			30S-EA ASSY DIMS				
				CHK'D										
				APPV'D										
				MFG										
				Q.A										
				NOTES:				MATERIAL:		DWG NO.		A3		
				POLYCARBONATE WINDOW				316 Stainless Steel		30S-EA				
NO.	CHANGE		DATE	INIT.					WEIGHT:		SCALE:1:2		SHEET 1 OF 1	

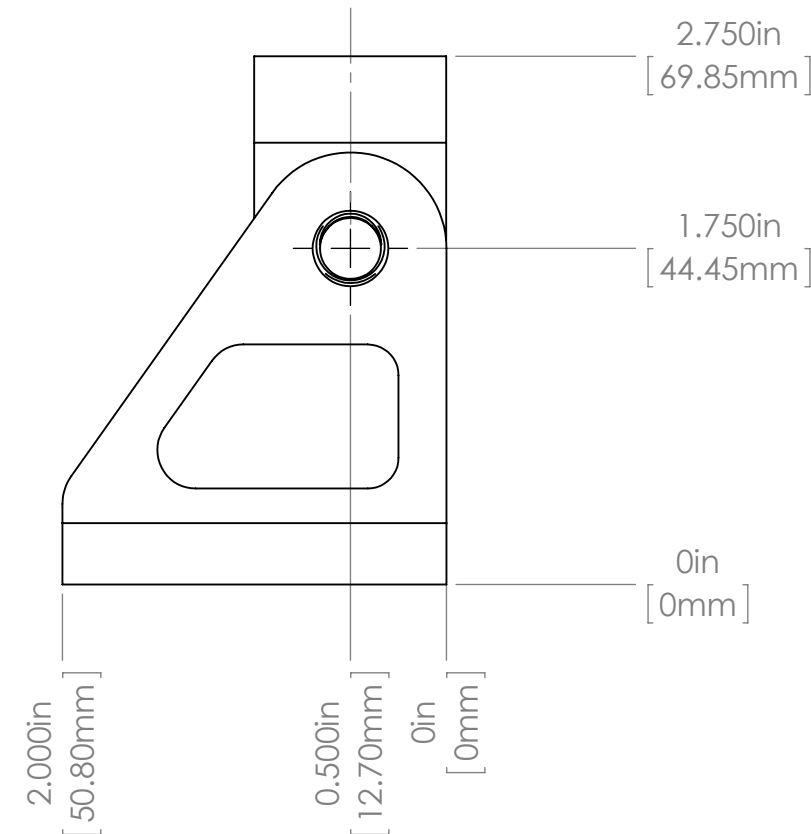
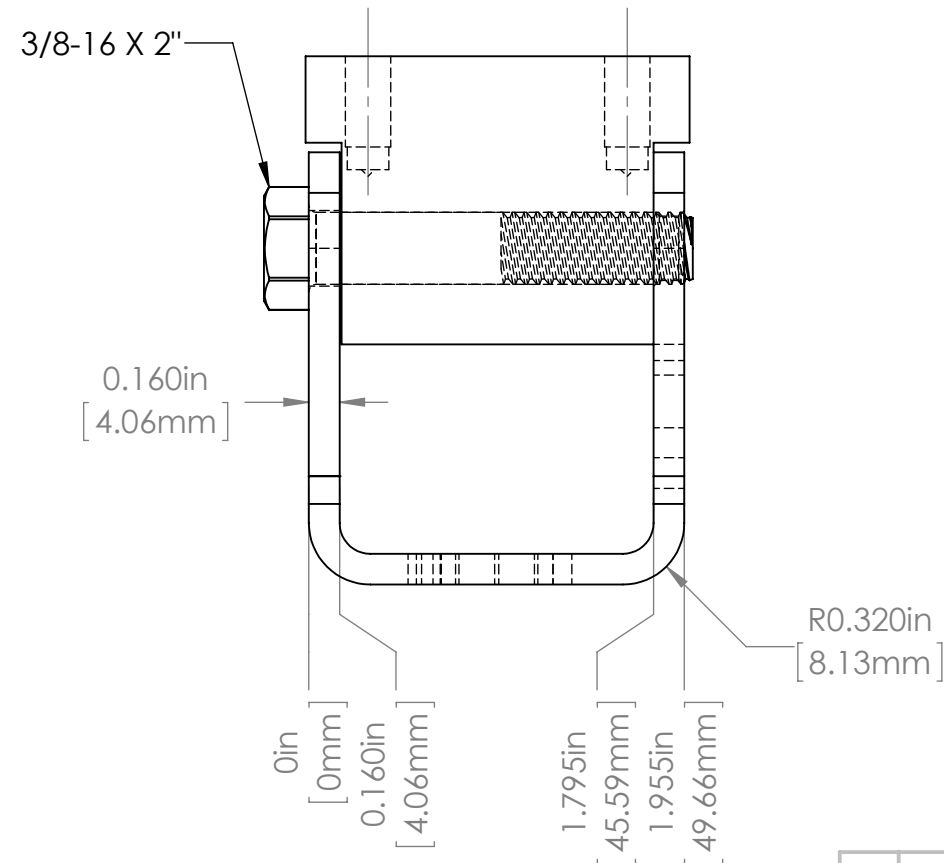
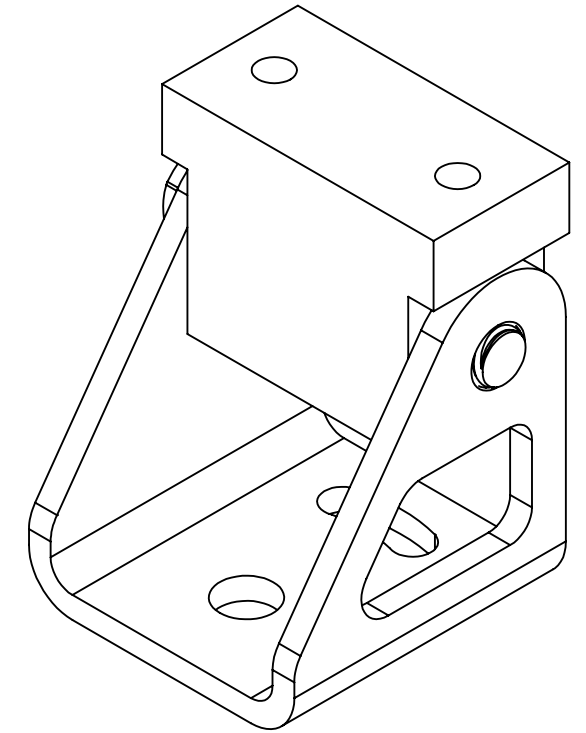
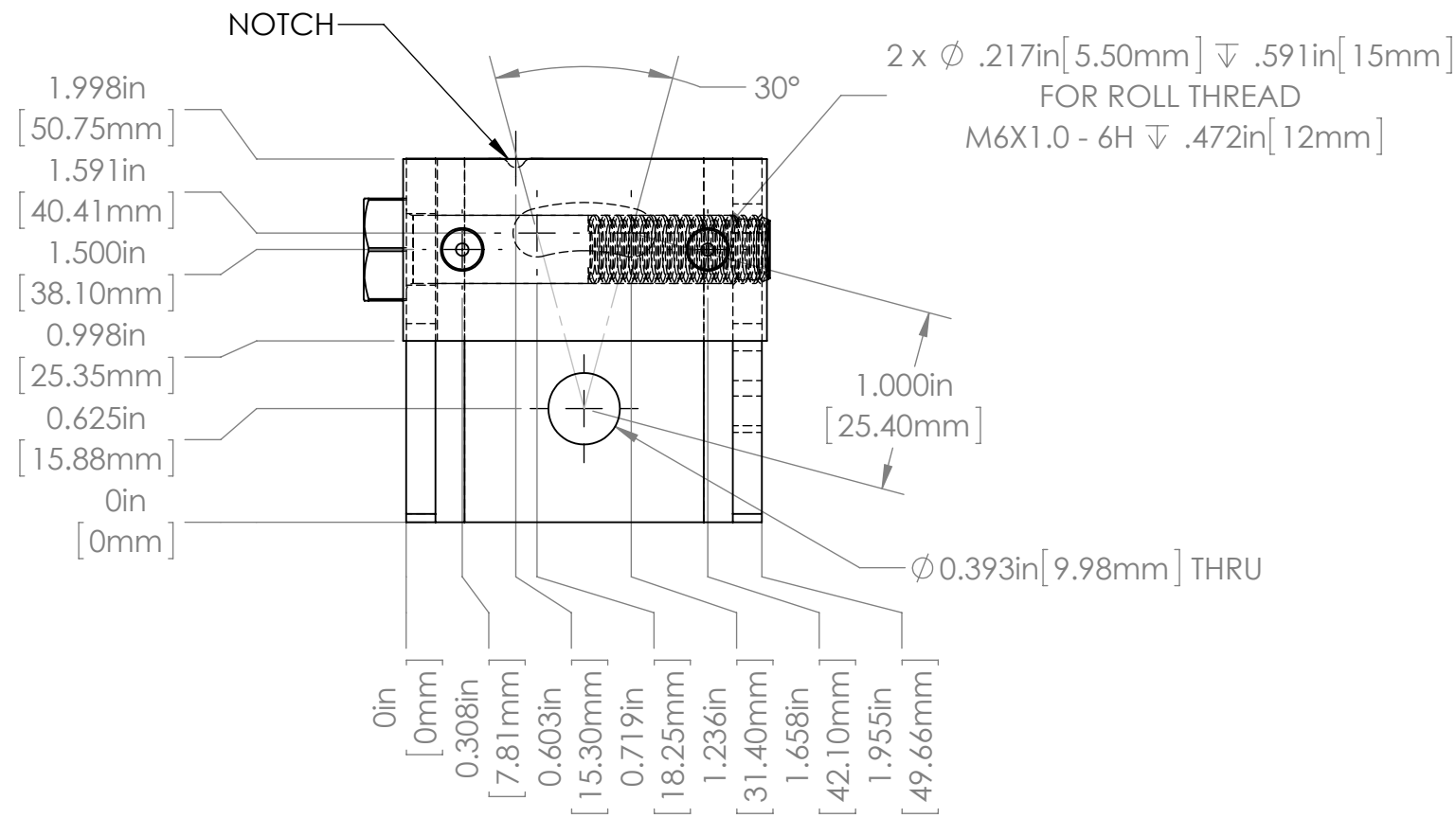


				UNLESS OTHERWISE SPECIFIED: DIMENSIONS ARE IN INCHES SURFACE FINISH: TOLERANCES: .000= +/- 0.005" .00= +/- 0.010"		FINISH: DEBUR AND BREAK SHARP EDGES		Allison Park Group, Inc. (APG) 4055 Alpha Drive Allison Park, PA 15101 USA		DO NOT SCALE DRAWING		REVISION				
				LINEAR:				Phone +1 (412) 487-8211 Fax +1 (412) 486-3157		This document is the property of APG and is considered company confidential. The information in this document is the property of APG and may not be used, reproduced, or distributed in whole or in part without the prior written permission of APG						
				DRAWN		NAME		SIGNATURE						DATE		
				CHK'D												
				APPV'D												
				MFG												
				Q.A												
				NOTES:				MATERIAL: 316 SS BODY / BASE ACRYLIC VIEWPORT 40D SILICONE GASKET		DWG NO.		30S-ED DIMS		A3		
NO.	CHANGE		DATE	INIT.					WEIGHT:		SCALE: 1:2		SHEET 1 OF 1			



				UNLESS OTHERWISE SPECIFIED: DIMENSIONS ARE IN INCHES SURFACE FINISH: TOLERANCES: .000= +/- 0.005" .00= +/- 0.010"		FINISH: DEBUR AND BREAK SHARP EDGES		Allison Park Group, Inc. (APG) 4055 Alpha Drive Allison Park, PA 15101 USA		DO NOT SCALE DRAWING		REVISION			
				LINEAR:				Phone +1 (412) 487-8211 Fax +1 (412) 486-3157		This document is the property of APG and is considered company confidential. The information in this document is the property of APG and may not be used, reproduced, or distributed in whole or in part without the prior written permission of APG					
				DRAWN		NAME		SIGNATURE						DATE	
				CHK'D											
				APPV'D											
				MFG											
				Q.A											
				NOTES:				MATERIAL: 316 SS BODY / BASE ACRYLIC VIEWPORT 40D SILICONE GASKET		DWG NO.		TITLE: 30S-EE IS8000 7.5 ACRYLIC ACFP ASSY DIMS			
NO.		CHANGE		DATE		INIT.		WEIGHT:		SCALE: 1:2		SHEET 1 OF 1			
												A3			





For more information please contact:

BOCK OPTRONICS INC.
14 Steinway Blvd., Unit 7
Toronto, Ontario M9W 6M6

Tel: (416) 674-2804
sales@bockoptronics.ca
www.bockoptronics.ca

				UNLESS OTHERWISE SPECIFIED: DIMENSIONS ARE IN INCHES SURFACE FINISH: TOLERANCES: .000= +/- 0.005" .00= +/- 0.010"		FINISH: BURNISHED	
				LINEAR:		DEBUR AND BREAK SHARP EDGES	
					NAME	SIGNATURE	DATE
				DRAWN	SCHUBERT		3/12/2013
				CHK'D			
				APPV'D			
				MFG			
				Q.A			
				NOTES:			
NO.	CHANGE	DATE	INIT.				

Allison Park Group, Inc. (APG)
4055 Alpha Drive
Allison Park, PA 15101 USA

Phone +1 (412) 487-8211
Fax +1 (412) 486-3157

www.apgvision.com

MATERIAL:
316 STAINLESS STEEL FOOT
316 STAINLESS STEEL ADAPTOR

WEIGHT:

DO NOT SCALE DRAWING

REVISION

This document is the property of APG and is considered company confidential.
The information in this document is the property of APG and may not be used,
reproduced, or distributed in whole or in part without the prior written permission of
APG

TITLE:

30S-PT1 MOUNT ASSEMBLY

DWG NO.

30S-PT1

A3

SCALE: 1:2

SHEET 1 OF 1