

OEM 4G/LTE Dual Ethernet Gateway w/WIFI

The all new Dragon-LTE-100-GL provides a feature packed, robust & compact industrial strength OEM wireless solution using ultra fast 4G/LTE technology for critical data applications. The Dragon-LTE-100-GL features Global Band Support, Dual 10/100 Ethernet ports, a high power 802.11b/g/n WIFI Hotspot, USB Direct Connect, status LED's, comprehensive VPN tunneling and customizable Firewall rules with ACL.

4G LTE

802.11 b/g/n WIFI

OEM Design

2x Ethernet Ports

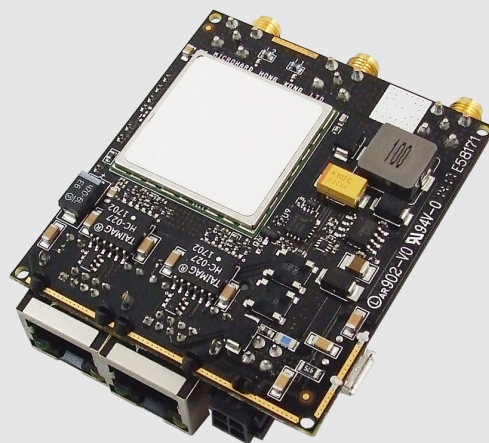
Low Power

USB Direct Connect



Features

- Low Power Consumption
- Robust & Compact OEM Design
- Ultra Fast 4G/LTE Operation
- Up to 150Mbps Downlink / 50 Mbps Uplink Over Air
- Support for 802.11b/g/n devices (Up to 150 Mbps)
- IP Pass-through Mode
- Status LED's (RSSI, Status, WIFI, Cell)
- Firewall with ACL Security, DMZ & Port Forwarding
- IPSec, GRE / VPN Tunneling
- Internet Content Filtering (OpenDNS, Custom Rules)
- Bandwidth Control (Throttling)
- 2 - 10/100 Ethernet (PoE), (2x LAN or 1x WAN/1xLAN)
- Wide Operating Temperature (-40°C to +85°C)
- Data Usage Alerts (Email, SMS)
- User interface via telnet or web browser
- Microhard NMS Support



Dragon-LTE-100-GL Specifications

Supported Bands	LTE FDD: B1,B2,B3,B4,B5,B7,B8,B12,B13, B18,B19,B20,B26,B28 TDD: B38,B39,B40,B41 WCDMA: B1,B2,B4,B5,B8,B6,B19 GSM: B2/B3/B5/B8	Diagnostics	RSSI, Ec/No, Voltage, Temperature, Re- mote diagnostics, UDP Event Reporting, SMS Alerts, Netflow																																				
Cellular Data Features*	LTE FDD: Up to 150 Mbps DL, 50 Mbps UL LTE TDD: Up to 130 Mbps DL, 35 Mbps UL DC-HSPA+: Up to 42 Mbps DL, 5.7 Mbps UL WCDMA: Up to 384 Kbps DL, 384 Kbps UL EDGE: Up to 296 Kbps DL, 236.8 Kbps UL GSM: Up to 107 Kbps DL, 85.6 Kbps UL	Input Voltage	7 - 30VDC or Passive PoE Reverse polarity protection																																				
*Module Standalone Laboratory Performance		Current Consumption (@12VDC)	Idle (LTE Connected): 93~120 mA WiFi (AP mode+LTE): 170 mA Max Peak: 320 mA																																				
WiFi Features	802.11b/g/n (2.4GHz)	Connectors:	Antenna 2x SMA Female (Cell, Div) 1x RPSMA Female (WiFi) Data 2x RJ-45 (Ethernet) 4 PIN Interlock (Vin) USB Micro-AB SIM 1.8 / 3.0V (Nano - 4FF)																																				
WiFi Performance	<table border="1"> <thead> <tr> <th>Rate</th><th>Mode</th><th>Tx (dBm)</th><th>Rx (dBm)</th></tr> </thead> <tbody> <tr><td>1 Mbps</td><td>b</td><td>30</td><td>-97 ± 1</td></tr> <tr><td>11 Mbps</td><td>b</td><td>30</td><td>-92 ± 1</td></tr> <tr><td>6 Mbps</td><td>g</td><td>30</td><td>-94 ± 1</td></tr> <tr><td>54 Mbps</td><td>g</td><td>26</td><td>-75 ± 1</td></tr> <tr><td>MCS0</td><td>n (HT20)</td><td>30</td><td>-96 ± 1</td></tr> <tr><td>MCS7</td><td>n (HT20)</td><td>26</td><td>-75 ± 1</td></tr> <tr><td>MCS0</td><td>n (HT40)</td><td>30</td><td>-94 ± 1</td></tr> <tr><td>MCS7</td><td>n (HT40)</td><td>26</td><td>-73 ± 1</td></tr> </tbody> </table>	Rate	Mode	Tx (dBm)	Rx (dBm)	1 Mbps	b	30	-97 ± 1	11 Mbps	b	30	-92 ± 1	6 Mbps	g	30	-94 ± 1	54 Mbps	g	26	-75 ± 1	MCS0	n (HT20)	30	-96 ± 1	MCS7	n (HT20)	26	-75 ± 1	MCS0	n (HT40)	30	-94 ± 1	MCS7	n (HT40)	26	-73 ± 1	Environmental	Operating Temperature -40°C to +85°C Humidity 5-95%, non-condensing
Rate	Mode	Tx (dBm)	Rx (dBm)																																				
1 Mbps	b	30	-97 ± 1																																				
11 Mbps	b	30	-92 ± 1																																				
6 Mbps	g	30	-94 ± 1																																				
54 Mbps	g	26	-75 ± 1																																				
MCS0	n (HT20)	30	-96 ± 1																																				
MCS7	n (HT20)	26	-75 ± 1																																				
MCS0	n (HT40)	30	-94 ± 1																																				
MCS7	n (HT40)	26	-73 ± 1																																				
Ethernet	2x 10/100, Auto - MDI/X IEEE 802.3	Weight	Approx. 55 grams																																				
USB	USB 2.0 Direct Connect	Dimensions	Approx. 3.0" x 2.25" x 0.70" (76mm x 57mm x 18mm)																																				
SMS	SMS to/from Ethernet via Telnet SMS Alerts SMS Remote Control	Approvals	FCC / IC PTCRB																																				
Carrier Connection	PAP, CHAP, ICMP Keep Alive, Traffic Watchdog, DDNS, IP pass-through.	Order Options																																					
Network Protocols	TCP, UDP, TCP/IP, ARP, ICMP, DHCP, HTTP, SNMP, FTP, DNS, Serial over IP, Modbus Slave (TCP/Serial)	Model	Dragon-LTE-100-GL																																				
Security	VPN, IPSec with IKE/ISAKMP; Multiple tunnel support (16); 3DES and up to 256-bit AES Encryp- tion, VPN Tunneling L2TP, GRE, HTTPS, RADIUS																																						
Firewall	NAT, NAT-T VPN tunneling, Port forwarding, VPN/ GRE pass-through; Access control lists , DMZ																																						
Management	Telnet, WebUI, SNMP V1/2/3, Wireless Upgrade (HTTP/FTP), AT Command Interface (Serial/ Telnet), Microhard NMS Support, Data Usage Alerts, SSH																																						

Contact Information

Copyright 2019 Microhard Systems Inc.
Specifications subject to change without notice.



For more information please contact:

BOCK OPTRONICS INC.

14 Steinway Blvd., Unit 7
Toronto, Ontario M9W 6M6

Tel: (416) 674-2804
sales@bockoptronics.ca
www.bockoptronics.ca



OEM Dual Carrier Cellular Gateway

The DX2-CAT12 provides a feature packed, compact industrial strength Dual Cellular Carrier OEM solution using ultra fast LTE technology. Using the latest LTE Advanced Category 12 technology with Carrier Aggregation the DX2-CAT12 can provides up to 600 Mbps of LTE data (per Carrier) for todays data intensive applications. The DX2-CAT12 provides features such as Dual Active Carrier with Instant Failover to maximize redundancy, ensuring your Ethernet and Serial based devices are always connected.

600 Mbps LTE / Carrier

Firewall / ACL / VPN

Load Balancing

Instant Failover

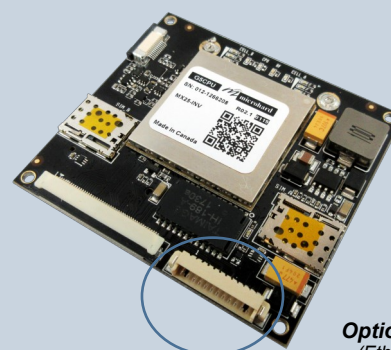
1 Gb Ethernet

RS232 Serial Port

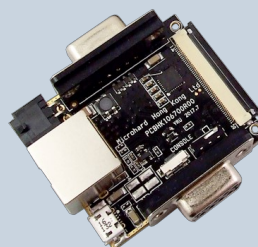


Features

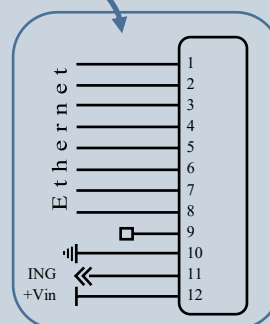
- Dual Active Module - CAT LTE Operation
- LTE Advanced w/Carrier Aggregation Technology
- Dual Carrier / Dual SIM
- Carrier Failover for Instant Redundancy
- Up to 600 Mbps Downlink / 150 Mbps Uplink per Carrier
- Global Band Support /Fallback
- Data Usage Alerts (Email, SMS)
- Firewall with ACL Security, DMZ & Port Forwarding
- IPSec, GRE / VPN Tunneling
- RS232 Serial Data Port
- 10/100/1000 Ethernet
- SMS Support: Ethernet (Telnet), Alerts
- RSSI, Status, Cellular LEDs
- Wide Operating Temperature (-40°C to +85°C)
- User interface via telnet or web browser
- Microhard NMS Support



Optional Quick Connect
(Ethernet + Power + IGN)



Optional Interface
Board



DX2-CAT12

Specifications

Supported Bands (Dual Cellular Modules)	LTE-FDD: B1/B2/B3/B4/B5/B7/B8/B9/B12/B13/B14/B17/B18/B19/B20/B21/B25/B26/B28/B29/B30/B32/B66; LTE-TDD: B38/39/B40/B41 WCDMA: B1/B2/B3/B4/B5/B8/B9/B19	Diagnostics	RSSI, RSRP, RSRQ, Voltage, Temperature, Remote diagnostics, Watchdog, UDP Event Reporting, SMS Alerts, Netflow
	DL 2×CA: B1+3/5/18/19/20/26; B2+2/4/5/12/13/17/29/30/66; B3+3/5/7/8/19/20/28; B4+4/5/12/13/17/29/30; B5+7/30/66; B7+7/20/28; B12+30; B13+66; B19+21; B20+B32; B29+30; B38+38; B39+39; B39+39; B39+41; B40+40; B41+41; B66+66, 12, 29, 30, 5; B2+B14; B14+B30; B14+B66; DL 3×CA: DL inter-band 3CA: B1+3+5/7/8/19/20/28; B1+7+20; B2+4+5; B2+4+13, B2+5+30; B2+12+30; B2+29+30, B3+7+20, B3+7+28, B3+7+8, B4+5+30, B4+12+30, B4+29+30, B5+66+2, B13+66+2; B66+12+30; B66+29+30, B66+5+30; B2+B14+B66; DL 2 intra-band plus inter-band 3CA: B2+2+5; B2+2+13; B3+3+7; B3+7+7; B3+3+20; B3+3+28; B3+3+1; B4+4+5; B4+4+13; B7+7+28; B5+66+66; B13+66+66; B66+66+2; B39+B39+B41; B39+B41+B41; B14+B66+B66 DL 3 intra-band 3CA: B40+40+40; B41+41+41; B66+66+66 UL 2×CA: B3+3; B41+41	Input Voltage	7 - 30VDC
		Connectors: DX-CAT12 Module Antenna(s) Data SIM Data2 Interface Module Power Serial Data Ethernet Main Module Con.	4x UFL(Main1/Div1, Main2/Div2) 50-pin ZIF/FFC (TTL) 1.8 / 3.0V (Nano - 4FF) 12 Pin (8 pin Ethernet + Power/IGN) 4 PIN Interlock (Vin, Gnd) 2x DB9 Female RS232 RJ-45 50-pin ZIF/FFC (TTL)
		Environmental Operating Temperature Humidity	-40°C to +85°C -40°F to +185°F 5-95%, non-condensing
	Cellular Data Features* (per module)	LTE-FDD: Max 600Mbps (DL), Max 150Mbps (UL) LTE-TDD: Max 430Mbps (DL), Max 30Mbps (UL) UMTS: DC-HSDPA: Max 42Mbps (DL) HSUPA: Max 5.76Mbps (UL) WCDMA: Max 384Kbps (DL), Max 384Kbps (UL)	Weight DX-CAT12 Module Interface Module
<i>*Module Standalone Laboratory Performance</i>		Dimensions DX-CAT12 Module Interface Module	~ 2.50" x 2.25" x 0.35" (65mm x 58mm x 9mm) ~ 1.60" x 1.90" x 0.70" (41mm x 49mm x 18mm)
Serial Interface	RS232 Serial Data Port (TTL)	Approvals	FCC / IC PTCRB
Serial Baud Rate	300bps to 921kbps		
Serial Port Server	Extensive Serial Port Support: TCP Server/Client / UDP Server/Client / Modbus / SMTP		
Ethernet	10/100/1000BASE-T, Auto - MDI/X (TTL)		
SMS	SMS to/from Ethernet via Telnet SMS Alerts SMS Remote Reboots		
Carrier Connection	Keep Alive, DDNS, IP pass-through, Failover, Load Balancer	Order Options	
Network Protocols	TCP, UDP, TCP/IP, ARP, ICMP, DHCP, HTTP, SNMP, FTP, DNS, Serial over IP, Modbus Slave (TCP/Serial)		
Security	VPN, IPSec with IKE/ISAKMP; Multiple tunnel support (16); 3DES and up to 256-bit AES Encryption, Site to Site Tunneling, L2TP, Open VPN, GRE, HTTPS, RADIUS		
Firewall	NAT, NAT-T VPN tunneling, Port forwarding, VPN/ GRE pass-through; Access control lists (IP/MAC filtering), Data origin / integrity Authentication, DMZ		
Management	Telnet, WebUI, SNMP V1/2/3, Wireless Upgrade (HTTP/FTP), RADIUS authentication, AT Command Interface (Serial/Telnet), Microhard NMS Support, Data Usage Alerts, SSH		
		Model	DX2-CAT12

Contact Information

Copyright 2020 Microhard Systems Inc.
Specifications subject to change without notice.

For more information please contact:



BOCK OPTRONICS INC.

14 Steinway Blvd., Unit 7
Toronto, Ontario M9W 6M6

Tel: (416) 674-2804
sales@bockoptronics.ca
www.bockoptronics.ca



2X2 MIMO Digital Data Link w/LTE

The all new pMLTE-4GL-2450 combines our high powered Digital Data Link and a robust LTE Connection into a single compact OEM package. The Data Link features 2.4 GHz 2x2 MIMO, Maximal Ratio Combining (MRC), Maximal Likelihood (ML) decoding and Low-Density Parity Check (LDPC) to achieve robust RF performance. The LTE Connection provides globally supported LTE Bands with 3G/HSPA Fallback and delivers up to 150 Mbps. The pMLTE features Dual Ethernet, USB, Dual RS232 Serial/Console and GPS!

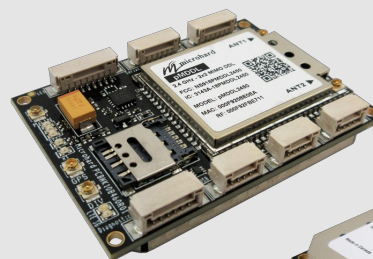
150 Mbps LTE w/Fallback

25 Mbps Digital Data Link

Compact Size

Ethernet | Serial | USB

PTP | PMP | MESH



Only 30 grams!

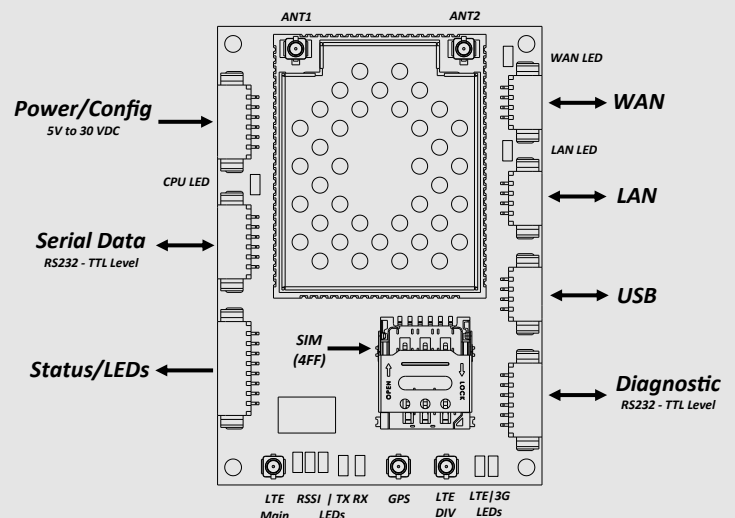
1.6" X 2.25" X



Optional Motherboard for Easy Testing & Evaluation!

pMLTE Features

- Robust 2X2 MIMO 2.4 GHz Digital Data Link
- 150 Mbps (DL) 4G/LTE Operation w/Global Band Support
- Data Link: 25 Mbps Iperf Throughput @ 8 MHz channel (-78 dBm)
- Dual RS232 Serial Communication Ports (Data/Console)
- Dual 10/100 Ethernet Ports (LAN/WAN)
- Supports Point-to-Point and Point-to-Multipoint Networks
- Master, Remote, Relay, Mesh Operating Modes.
- Adjustable total transmit power (up to 1W)
- Standalone GPS
- Interface through local console, telnet, and web browser
- Local and remote wireless firmware upgrades



pMLTE Series Specifications

Digital Data Link Specifications		Optimal Performance Specifications (Digital Data Link)			
Operating Frequency	pMLTE-4GL-2450: 2.402 - 2.478 GHz pMLTE-4GL-2350: 2.304 - 2.390 GHz pMLTE-4GL-2550: 2.500 - 2.570 GHz	Modulation	IPerf Throughput (Mbps)	Optimal MRC Sensitivity (dBm)	Total Tx Power (dBm) +/- 1dB
Error Detection	32 bits of CRC, ARQ	8 MHz (2X2 MIMO ON)			
Encryption (Requires Export Permit)	128-bit AES (Optional 256-bit)	BPSK_1/2	3	-99.5	30dBm
Operating Modes	Point-to-Point, Point-to-Multipoint, Relay, Mesh	QPSK_1/2	5.9	-98	30dBm
Rejection	Excellent strong signal interference & rejection characteristics	QPSK_3/4	8.8	-96	30dBm
Cellular Specifications		16QAM_1/2	11.6	-92	30dBm
		16QAM_3/4	17.1	-90	30dBm
		64QAM_2/3	22.8	-85	30dBm
		64QAM_3/4	25.5	-83.5	30dBm
Cellular Supported Bands	LTE FDD: B1,B2,B3,B4,B5,B7,B8,B12,B13, B18,B19,B20,B26,B28 TDD: B38,B39,B40,B41 WCDMA: B1,B2,B4,B5,B8,B6,B19 GSM: B2/B3/B5/B8	64QAM_5/6	27.8	-81	30dBm
Cellular Data Features* *Module Standalone Lab Performance		4 MHz (2X2 MIMO ON)			
		BPSK_1/2	1.51	-102.5	30dBm
		QPSK_1/2	2.98	-101	30dBm
		QPSK_3/4	4.4	-99	30dBm
		16QAM_1/2	5.8	-95.5	30dBm
		16QAM_3/4	8.6	-93	30dBm
		64QAM_2/3	11.4	-88	30dBm
		64QAM_3/4	12.8	-86	30dBm
		64QAM_5/6	14	-83.5	30dBm
		General Specifications		Modulation	IPerf Throughput (Mbps)
8 MHz (MIMO OFF)					
BPSK_1/2	3			-96.5	30dBm
QPSK_1/2	5.8			-95	30dBm
QPSK_3/4	8.6			-93	30dBm
16QAM_1/2	11.5			-89	30dBm
16QAM_3/4	16.9			-87	30dBm
64QAM_2/3	22.2			-82	28dBm
64QAM_3/4	24.7			-80.5	28dBm
64QAM_5/6	27.4			-78	27dBm
Ports	2x RS232 (300bps to 921kbps) (Serial/Console) 2x 10/100BaseT IEEE802.3 (LAN/WAN) USB 2.0	4 MHz (MIMO OFF)			
Firewall	Port Forwarding, Access Control, IP/MAC List, VPN/GRE, DMZ, NAT	BPSK_1/2	1.5	-99.5	30dBm
Diagnostics	Remote Diagnostics, Ping, Traceroute, ARP table, DHCP active leases, IPerf, RSSI	QPSK_1/2	2.9	-98	30dBm
Management	Local Serial Port Console, Telnet, WebUI, SNMP, FTP Upgrade, TFTP, AT Commands	QPSK_3/4	4.3	-96	30dBm
Input Voltage	7 - 30 VDC	16QAM_1/2	5.7	-92.5	30dBm
Connectors:	DDL Antenna: UFL x2 (ANT1, ANT2) LTE Antenna: UFL x3 (Main, Div, GPS) Power: 6-Pin Quick Connect Serial/Console: 2x 6-Pin Quick Connect Status/LEDs: 8-Pin Quick Connect WAN/LAN: 2x 4-Pin Quick Connect USB: 4-Pin Quick Connect SIM Slot: Nano(4FF)	16QAM_3/4	8.4	-90	30dBm
Environmental	Temperature: -40°F to 185°F (-40°C to +85°C) Humidity: 5-95%, non-condensing	64QAM_2/3	11.3	-85	28dBm
Weight	Modem: Approx. 30 grams Motherboard: 55 grams	64QAM_3/4	12.5	-83	28dBm
Dimensions	Modem: 1.60" x 2.25" x 0.35" (40x57x9mm) Motherboard: 2.6" x 3.56" x 0.58" (70x90x14.5mm)	64QAM_5/6	14	-80.5	27dBm
Approvals	pMLTE-4GL-2450: FCC/IC pMLTE-4GL-2350: N/A pMLTE-4GL-2550: N/A				
Order Options					
pMLTE-4GL-2450 (MHK186500)	2.4 GHz 2X2 MIMO Digital Data Link with LTE				
pMLTE-4GL-2350 (MHK186600)	2.3 GHz 2X2 MIMO Digital Data Link with LTE				
pMLTE-4GL-2550 (MHK186700)	2.5 GHz 2X2 MIMO Digital Data Link with LTE				

Order Options

pMLTE-4GL-2450 (MHK186500)	2.4 GHz 2X2 MIMO Digital Data Link with LTE
pMLTE-4GL-2350 (MHK186600)	2.3 GHz 2X2 MIMO Digital Data Link with LTE
pMLTE-4GL-2550 (MHK186700)	2.5 GHz 2X2 MIMO Digital Data Link with LTE

Contact Information

Copyright 2020 Microhard Systems Inc.
Specifications subject to change without notice.

For more information please contact:



BOCK OPTRONICS INC.

14 Steinway Blvd., Unit 7
Toronto, Ontario M9W 6M6

Tel: (416) 674-2804
sales@bockoptronics.ca
www.bockoptronics.ca



www.microhardcorp.com

1W OEM 802.11b/g/n Serial/Ethernet WIFI Router w/LTE

The pX2LTE-4GL combines our powerful px2 WiFi router/gateway and a robust LTE Connection into a single compact OEM package. The LTE Connection provides a wide selection of globally supported LTE bands, features 3G/HSPA Fallback and can deliver up to 150 Mbps of download speeds. The embedded pX2 provides high power (1W), wide range, fast 802.11n WiFi access for remote devices to connect. The pX2LTE features Dual Ethernet Ports, Dual RS232, USB and GPS capabilities.

802.11 b/g/n (1W) WiFi

150 Mbps LTE w/Fallback

Compact Size

Ethernet | Serial | USB

Industrial Temperature

AP | Client | Repeater Modes



Only 30 grams!

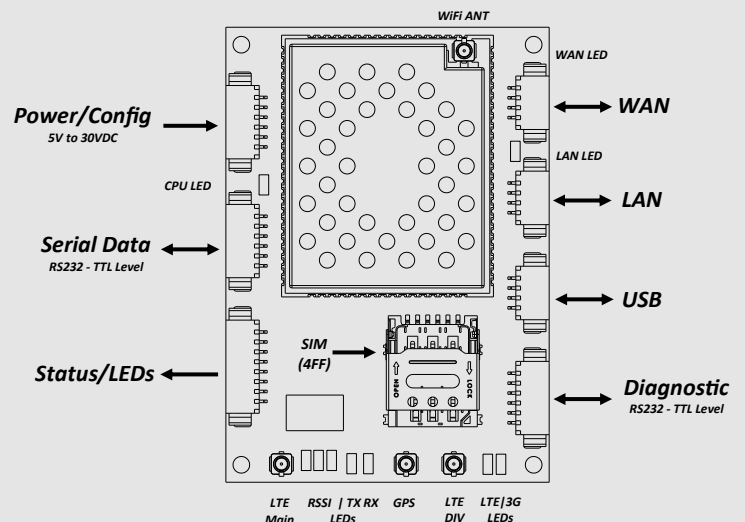
1.6" X 2.25" X 0.35"



Optional Motherboard for Easy Testing & Evaluation!

pXLTE Features

- High Power WiFi (up to 1W) w/ Excellent Rx Sensitivity
- 802.11b/g/n WiFi , up to 150 Mbps data rate
- 150 Mbps (DL) 4G/LTE Operation w/Global Band Support
- Firewall with ACL Security, Port Forwarding
- Full Scale Access Point, Client & Repeater Modes
- Dual Serial /Console Ports (RS232)
- Dual 10/100 Ethernet Ports (LAN/WAN)
- Industrial grade operating temperature (-40°C to +85°C)
- Standalone GPS
- Administration via console, telnet, web browser
- Local and remote wireless firmware upgradable



pXLTE Series

Specifications

WiFi Specifications		Performance Specifications (WiFi)			
Frequency	2.4000 - 2.4835 GHz	Rate	Mode	Tx Power	Receive
Radio Operation	IEEE 802.11 b/g/n	1 Mbps	802.11b	30 dBm	-97 dBm ±1 dB
Output Power	Up to 30dBm (1W)	2 Mbps	802.11b	30 dBm	-96 dBm ±1 dB
Link Rate	Up to 150 Mbps	5.5 Mbps	802.11b	30 dBm	-95 dBm ±1 dB
Error Detection/Control	FEC/ARQ	11 Mbps	802.11b	30 dBm	-92 dBm ±1 dB
Operating Modes	Full Scale Access Point, Client, Repeater	6 Mbps	802.11g	30 dBm	-94 dBm ±1 dB
Encryption	WEP,WPA(PSK), WPA2(PSK), WPA+WPA2(PSK), WPA Enterprise (RADIUS), WPA2 Enterprise, WPA + WPA2 Enterprise	9 Mbps	802.11g	30 dBm	-93 dBm ±1 dB
Range	> 10 miles (16 km) (Antenna Dependent)	12 Mbps	802.11g	30 dBm	-91 dBm ±1 dB
Cellular Specifications		18 Mbps	802.11g	30 dBm	-90 dBm ±1 dB
Cellular Supported Bands	LTE FDD: B1,B2,B3,B4,B5,B7,B8,B12,B13, B18,B19,B20,B26,B28 TDD: B38,B39,B40,B41 WCDMA: B1,B2,B4,B5,B8,B6,B19 GSM: B2/B3/B5/B8	24 Mbps	802.11g	28 dBm	-86 dBm ±1 dB
Cellular Data Features*	LTE FDD: Up to 150 Mbps DL, 50 Mbps UL LTE TDD: Up to 130 Mbps DL, 35 Mbps UL DC-HSPA+: Up to 42 Mbps DL, 5.7 Mbps UL WCDMA: Up to 384 Kbps DL, 384 Kbps UL EDGE: Up to 296 Kbps DL, 236.8 Kbps UL GSM: Up to 107 Kbps DL, 85.6 Kbps UL	36 Mbps	802.11g	28 dBm	-83 dBm ±1 dB
*Module Standalone Lab Performance		48 Mbps	802.11g	26 dBm	-77 dBm ±1 dB
General Specifications		54 Mbps	802.11g	26 dBm	-75 dBm ±1 dB
Ports	RS232 (Tx, RX, RTS, CTS, DTR, DSR) 300bps to 921kbps Dual 10/100BaseT IEEE802.3 2.0	MCS0	802.11n (HT20)	30 dBm	-96 dBm ±1 dB
Management	Local Serial Port Console, Telnet, WebUI, SNMP, FTP Upgrade, TFTP, CLI (Command Line Interface)	MCS1	802.11n (HT20)	30 dBm	-95 dBm ±1 dB
Network Advanced Protocols	TCP, UDP, TCP/IP, ARP, ICMP, DHCP, HTTP, SNMP, FTP, Serial over IP IP Routing - static Routing, IP/RIPv1, IP/RIPv2, CIDR, ICMP, ARP NAT and Port Forwarding (Routing mode only). Full 802.1Q VLAN Support, Access Control Lists (MAC & IP), MAC/IP Binding, Multiple SSID Support	MCS2	802.11n (HT20)	30 dBm	-92 dBm ±1 dB
Diagnostics	Remote Diagnostics, Monitor Utilities (Ping, ARP table, DHCP active leases, CQ), Link Test	MCS3	802.11n (HT20)	28 dBm	-90 dBm ±1 dB
Input Voltage	7-30 VDC	MCS4	802.11n (HT20)	28 dBm	-86 dBm ±1 dB
Connectors	WiFi Antenna: UFL LTE Antenna: UFL x3 (Main, Div, GPS) Power: 6-Pin Quick Connect Serial/Console: 2x 6-Pin Quick Connect Status/LEDs: 8-Pin Quick Connect WAN/LAN: 2x 4-Pin Quick Connect USB: 4-Pin Quick Connect SIM Slot: Nano(4FF)	MCS5	802.11n (HT20)	26 dBm	-83 dBm ±1 dB
Environmental	Temperature: -40°F to 185°F (-40°C to +85°C) Humidity: 5-95% humidity, non-condensing	MCS6	802.11n (HT20)	26 dBm	-77 dBm ±1 dB
Weight	Modem: Approx. 30 grams Motherboard: 55 grams	MCS7	802.11n (HT20)	26 dBm	-75 dBm ±1 dB
Dimensions	Modem: 1.60" x 2.25" x 0.35" (40x57x9mm) Motherboard: 2.6" x 3.56" x 0.58" (70x90x14.5mm)	MCS0	802.11n (HT40)	30 dBm	-94 dBm ±1 dB
Approvals	FCC Part 15.247 IC RSS210	MCS1	802.11n (HT40)	30 dBm	-93 dBm ±1 dB
		MCS2	802.11n (HT40)	30 dBm	-90 dBm ±1 dB
		MCS3	802.11n (HT40)	28 dBm	-89 dBm ±1 dB
		MCS4	802.11n (HT40)	28 dBm	-84 dBm ±1 dB
		MCS5	802.11n (HT40)	26 dBm	-81 dBm ±1 dB
		MCS6	802.11n (HT40)	26 dBm	-75 dBm ±1 dB
		MCS7	802.11n (HT40)	26 dBm	-73 dBm ±1 dB

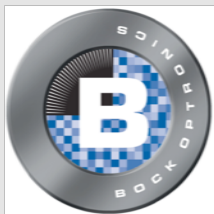
Order Options

Model pX2LTE-4GL

Contact Information

Copyright 2020 Microhard Systems Inc.
Specifications subject to change without notice.

For more information please contact:



BOCK OPTRONICS INC.

14 Steinway Blvd., Unit 7
Toronto, Ontario M9W 6M6

Tel: (416) 674-2804
sales@bockoptronics.ca
www.bockoptronics.ca

