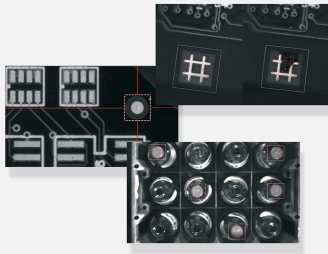




# EasyFind

Geometric pattern matching library



## At a Glance

- Pattern matching using a feature point technology
- Fully automatic, fast and robust
- Invariant to rotation and scaling
- High tolerance to pattern degradation
- Support of "don't care" areas

## Benefits

### Open eVision Studio: Evaluation, prototyping and development tool

Open eVision Studio is the evaluation, prototyping and development tool of Open eVision. Its intuitive graphical user interface allows you to call and immediately see the result of any of eVision's 2D image processing functions. A scripting functionality generates the corresponding code, which can then be copied and pasted into your application.

Open eVision Studio is free (when using Open eVision 2.0 and above) and does not require any license.

Just click on [DOWNLOAD OPEN EVISION STUDIO](#) and install Open eVision. Sample images, manuals and sample programs are included.

### EasyFind Description

Based on an innovative feature-point technology, EasyFind is designed to rapidly find one or more instances of a reference model in the image.

Compared to normalized correlation, EasyFind features faster processing and improved robustness. It shows excellent performances when handling instances that are highly degraded due to noise, blur, occlusion, missing parts or unstable illumination conditions.

### Sub-pixel accuracy

With an adjustable accuracy up to sub-pixel level, EasyFind reports very precise information about the instances found, such as their location, rotation angle, scale and matching score.

### "Don't-care" areas

EasyFind supports "don't-care" areas. This feature allows the creation of complex pattern shapes.

### Fast Processing and Improved Robustness

EasyFind is based on a novel feature-point technology. Instead of comparing the reference model to the sample image pixel-wise, it carefully selects salient features in the model. This method allows EasyFind to match only the areas that convey valuable information, resulting in faster processing and much improved robustness.

### Neo, a New, Flexible Licensing System

- Neo is the new Licensing System of Euresys. It is reliable, state-of-the-art, and is available now under Windows.

- Neo allows you to choose where to activate your license, either on a Neo Dongle or in a Neo Software Container. You buy a license, you decide later.
- Neo Dongles offer a sturdy hardware and provide the flexibility to be transferred from a PC to another.
- Neo Software Containers do not need any dedicated hardware, and instead are linked to the PC on which they have been activated.
- Neo ships with its own, dedicated, Neo License Manager, which comes in two flavours: An intuitive, easy to use, Graphical User Interface and a Command Line Interface that allows for easy automation of Neo licensing procedures.

## Applications

### Machine Vision for the Electronic Manufacturing Industry

- PCB Alignment
- Pick and place machines
- Wire bonding and Die bonding
- LED inspection

### Machine Vision for the General Manufacturing Industries

- Presence / Absence check

## Specifications

### Software

#### Host PC Operating System

- Open eVision is a set of 32-bit and 64-bit libraries that require a processor compatible with the SSE2 instruction set.
- Deep Learning Bundle is only available in the 64-bit Open eVision library.
- Open eVision can be used on the following operating systems:
  - Windows 10 (32- and 64-bits)
  - Windows 8 (32- and 64-bits)
  - Windows 7 (32- and 64-bits)
- Since Open eVision 2.6, discontinued support of:
  - Windows Vista 32-bits Service Pack 1
  - Windows XP 32-bits Service Pack 3
  - Windows Embedded Standard 2009 32-bits
- The Open eVision installer does not allow installation on virtual machines.
- Minimum requirements:
  - RAM: 8 GB
  - Display size: 800 x 600. 1280 x 1024 recommended.
  - Color depth: 16 bits. 32 bits recommended.
  - Between 100 MB and 2 GB free hard disk space for libraries, depending on selected options.

APIs

- Supported Integrated Development Environments and Programming Languages:
    - Microsoft Visual Studio 2008® SP1 (C++, C#, VB .NET, C++/CLI)
    - Microsoft Visual Studio 2010® (C++, C#, VB .NET, C++/CLI)
    - Microsoft Visual Studio 2012® (C++, C#, VB .NET, C++/CLI)
    - Microsoft Visual Studio 2013® (C++, C#, VB .NET, C++/CLI)
    - Microsoft Visual Studio 2015® (C++, C#, VB .NET, C++/CLI)
    - Microsoft Visual Studio 2017® (C++, C#, VB .NET, C++/CLI)
  - Since Open eVision 2.5.1, discontinued support of:
    - Borland C++ Builder 6.0 update 4 (C++)
    - CodeGear Delphi 2009 (Object Pascal)
    - CodeGear C++ Builder 2009 (C++)
    - Microsoft Visual Studio 6.0 SP6 (C++, Basic)
    - ActiveX API
  - Since Open eVision 2.4.1, discontinued support of:
    - Embarcadero RAD Studio XE4 and XE5 (C++, Object Pascal, 32 bits only)
- 

### Ordering Information

---

Product code - Description

- 4008 - EasyFind for USB dongle
  - 4058 - EasyFind for PAR dongle
  - 4108 - EasyFind for board licensing
  - 4158 - Open EasyFind for USB dongle
  - 4208 - Open EasyFind for PAR dongle
  - 4258 - Open EasyFind for soft-based licensing
  - 4308 - Open eVision EasyFind
- 

Optional accessories

- 6512 - eVision/Open eVision USB Dongle (empty)
  - 6513 - eVision/Open eVision Parallel Dongle (empty)
  - 6514 - Neo USB Dongle (empty)
-



## EMEA

### **Euresys SA**

Liège Science Park - Rue du Bois Saint-Jean, 20  
4102 Seraing - Belgium

Phone: +32 4 367 72 88  
Email: sales.europe@euresys.com

## EMEA

### **Sensor to Image GmbH**

Lechtorstrasse 20 -  
86956 Schongau - Germany

Phone: +49 8861 2369 0  
Email: sales.europe@euresys.com

## AMERICA

### **Euresys Inc.**

27132-A Paseo Espada - Suite 421  
San Juan Capistrano, CA 92675 - United States

Phone: +1 949 743 0612  
Email: sales.americas@euresys.com

## ASIA

### **Euresys Pte. Ltd.**

750A Chai Chee Road - #07-15 Viva Business Park  
Singapore 469001 - Singapore

Phone: +65 6445 4800  
Email: sales.asia@euresys.com

## CHINA

### **Euresys Shanghai Liaison Office**

Unit 802, Tower B, Greenland The Center - No.500 Yunjin Road, Xuhui District  
200232 Shanghai - China

Euresys 上海联络处

上海市徐汇区云锦路500号绿地汇中心B座802室  
200232

Phone: +86 21 33686220  
Email: sales.china@euresys.com

## JAPAN

### **Euresys Japan K.K.**

Expert Office Shinyokohama - Nisso Dai 18 Building, Shinyokohama 3-7-18, Kohoku  
Yokohama 222-0033 - Japan  
〒222-0033

神奈川県横浜市港北区新横浜3-7-18 日総第18ビル エキスパートオフィス新横浜

Phone: +81 45 594 7259  
Email: sales.japan@euresys.com

More at [www.euresys.com](http://www.euresys.com)

