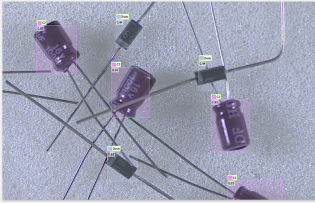


# EasyLocate

Deep Learning localization and classification library



## At a Glance

- Localization and identification of objects/products/defects
- Counting of objects
- Supports data augmentation and masks
- Compatible with CPU and GPU processing
- Includes the free Deep Learning Studio application for dataset creation, training and evaluation
- Only available as part of the Deep Learning Bundle

## Benefits

### New feature in Open eVision

All Open eVision libraries are now also available for embedded ARM devices.

### What Is Deep Learning ?

Neural Networks are computing systems inspired by the biological neural networks that constitute the human brain. Convolutional Neural Networks (CNN) are a class of deep, feed-forward artificial neural networks, most commonly applied to analyzing images.

Deep Learning uses large CNNs to solve complex problems difficult or impossible to solve with so-called conventional computer vision algorithms. Deep Learning algorithms may be easier to use as they typically learn by example. They do not require the user to figure out how to classify or inspect parts. Instead, in an initial training phase, they learn just by being shown many images of the parts to be inspected. After successful training, they can be used to classify parts, or detect and segment defects.

### EasyLocate Description

EasyLocate is the localization and identification library of Deep Learning Bundle. It is used to locate and identify objects, products, or defects in the image. It has the capability of distinguishing overlapping objects and, as such, EasyLocate is suitable for counting the number of object instances.

In practice, EasyLocate predicts the bounding box surrounding each object, or defect, it has found in the image and assigns a class label to each bounding box. It must be trained with images where the objects or defects that must be found have been annotated with a bounding box and a class label.

### Data Augmentation

Deep Learning works by training a neural network, teaching it how to classify a set of reference images. The performance of the process highly depends on how representative and extensive the set of reference images is. Deep Learning Bundle implements “data augmentation”, which creates additional reference images by modifying (for example by shifting, rotating, scaling) existing reference images within programmable limits. This allows Deep Learning Bundle to work with as few as one hundred training images per class.

### **Why Choose Open eVision’s Deep Learning Bundle?**

- Deep Learning Bundle has been tailored, parametrized and optimized for analyzing images, particularly for machine vision applications.
- Deep Learning Bundle has a simple API and the user can benefit from the power of deep learning technologies with only a few lines of code.
- Try before you buy: Deep Learning Bundle comes with the free Deep Learning Studio training and evaluation application.

EasyClassify, EasySegment and EasyLocate cannot be purchased separately. They are only available as part of the Deep Learning Bundle.

Download and evaluate Deep Learning Bundle using Deep Learning Studio today, and feel free to call Euresys’ support should you have any question.

### **Deep Learning Studio**

Open eVision includes the free Deep Learning Studio application. This application assists the user during the creation of the dataset as well as the training and testing of the deep learning tool. For EasySegment, Deep Learning Studio integrates an annotation tool and can transform prediction into ground truth annotation. It also allows to graphically configure the tool to fit performance requirements. For example, after training, one can choose a tradeoff between a better defect detection rate or a better good detection rate.

### **Performance**

Deep Learning generally requires significant amounts of processing power, especially during the learning phase. Deep Learning Bundle supports standard CPUs and automatically detects Nvidia CUDA-compatible GPUs in the PC. Using a single GPU typically accelerates the learning and the processing phases by a factor of 100.

### **Deep Learning Bundle Feature Comparison**

#### **Sample Dataset: Electronic components**

Our "Electronic Component" dataset shows how EasyLocate is able to reliably detect and count different kinds of standard electronic components stored in bulk inside plastic bags, in spite of the poor lighting conditions.

### **Neo Licensing System**

- Neo is the new Licensing System of Euresys. It is reliable, state-of-the-art, and is now available to store Open eVision and eGrabber licenses.
- Neo allows you to choose where to activate your licenses, either on a Neo Dongle or in a Neo Software Container. You buy a license, you decide later.
- Neo Dongles offer a sturdy hardware and provide the flexibility to be transferred from a computer to another.
- Neo Software Containers do not need any dedicated hardware, and instead are linked to the computer on which they have been activated.
- Neo ships with its own, dedicated, Neo License Manager, which comes in two flavours: an intuitive, easy to use, Graphical User Interface and a Command Line Interface that allows for easy automation of Neo licensing procedures.

### **All Open eVision libraries are available for Windows and Linux**

- Windows 7 to Windows 10 x86 (32-bits) and x86-64 (64-bits)
- Windows 11 x86-64 (64-bits)
- Linux 64 bits (x86-64 and ARMv8-A) with a glibc version 2.18 or newer

### **Developed with the support of the DG06 Technology Development Department**

## Applications

### **Machine Vision for the Electronic Manufacturing Industry**

- High speed image acquisition for AOI, 3D SPI, 3D lead/ball inspection machines.
- Very high resolution line-scan image acquisition for Flat Panel Display inspection and solar cell inspection
- PCB inspection
- Mark inspection
- LED inspection

### **Machine Vision for the General Manufacturing Industries**

- High frame rate image acquisition for inspection machines
- Line-scan image acquisition for surface inspection machines
- Line-scan image acquisition for textile inspection
- Presence / Absence check
- Surface analysis
- Assembly inspection
- Code quality verification for label printing machines

### **Machine Vision for the Printing Industry**

- High speed line-scan image acquisition for printing inspection machines

### **Machine Vision for the Food Inspection Industry**

- Food inspection and sorting

### **Video Acquisition and Recording**

- High-frame-rate video acquisition for motion analysis and recording

## Specifications

### Software

---

- Host PC Operating System
- Open eVision is a set of 32-bit and 64-bit libraries that require an Intel compatible processor with the SSE4 instruction set or an ARMv8-A compatible processor.
  - The Deep Learning Bundle is only available in the 64-bit Open eVision library.
  - Open eVision can be used on the following operating systems:
    - Windows 11 (64-bits)
    - Windows 10 (32- and 64-bits)
    - Windows 8 (32- and 64-bits)
    - Windows 7 (32- and 64-bits)
    - Linux 64 bits (x86-64 and ARMv8-A) with a glibc version greater or equal to 2.18
  - Since Open eVision 2.6, discontinued support of:
    - Windows Vista 32-bits Service Pack 1
    - Windows XP 32-bits Service Pack 3
    - Windows Embedded Standard 2009 32-bits
  - Remote connections
    - Remote connections are allowed using remote desktop, TeamViewer or any other similar software.
  - Virtual machines
    - Linux virtual machines are supported. Microsoft Hyper-V and Oracle VirtualBox hypervisors have been successfully tested.
    - Windows virtual machines are not supported.
  - Minimum requirements:
    - 2 GB RAM to run an Open eVision application
    - 8 GB RAM to compile an Open eVision application
    - Between 100 MB and 2 GB free hard disk space for libraries, depending on selected options.

- APIs
- Supported Integrated Development Environments and Programming Languages:
    - Microsoft Visual Studio 2008 SP1 (C++, C#, VB .NET, C++/CLI)
    - Microsoft Visual Studio 2010 (C++, C#, VB .NET, C++/CLI)
    - Microsoft Visual Studio 2012 (C++, C#, VB .NET, C++/CLI)
    - Microsoft Visual Studio 2013 (C++, C#, VB .NET, C++/CLI)
    - Microsoft Visual Studio 2015 (C++, C#, VB .NET, C++/CLI)
    - Microsoft Visual Studio 2017 (C++, C#, VB .NET, C++/CLI)
    - Microsoft Visual Studio 2019 (C++, C#, VB .NET, C++/CLI)
    - Microsoft Visual Studio 2022 (C++, C#, VB .NET, C++/CLI)
    - QtCreator 4.15 with Qt 5.12

### Ordering Information

---

- Product code - Description
- 4189 - Open EasyLocate for USB dongle
  - 4239 - Open EasyLocate for PAR dongle
  - 4289 - Open EasyLocate for soft-based licensing
  - 4339 - Open eVision EasyLocate
- Optional accessories
- 6512 - eVision/Open eVision USB Dongle (empty)
  - 6513 - eVision/Open eVision Parallel Dongle (empty)
  - 6514 - Neo USB Dongle (empty)



## EMEA

### **Euresys SA**

Liège Science Park - Rue du Bois Saint-Jean, 20  
4102 Seraing - Belgium

Phone: +32 4 367 72 88  
Email: sales.europe@euresys.com

## EMEA

### **Sensor to Image GmbH**

Lechtorstrasse 20 -  
86956 Schongau - Germany

Phone: +49 8861 2369 0  
Email: sales.europe@euresys.com

## AMERICA

### **Euresys Inc.**

27132-A Paseo Espada - Suite 421  
San Juan Capistrano, CA 92675 - United States

Phone: +1 949 743 0612  
Email: sales.americas@euresys.com

## ASIA

### **Euresys Pte. Ltd.**

750A Chai Chee Road - #07-15 ESR BizPark @ Chai Chee  
Singapore 469001 - Singapore

Phone: +65 6445 4800  
Email: sales.asia@euresys.com

## CHINA

### **Euresys Shanghai Liaison Office**

Unit 802, Tower B, Greenland The Center - No.500 Yunjin Road, Xuhui District  
200232 Shanghai - China

**Euresys 上海联络处**

上海市徐汇区云锦路500号绿地汇中心B座802室  
200232

Phone: +86 21 33686220  
Email: sales.china@euresys.com

## CHINA

### **Euresys Shenzhen Liaison Office**

Room 1202 - Chinese Overseas Scholars Venture Building  
518057 Shenzhen - China

**Euresys 深圳联络处**

深圳南山区留学生创业大厦1期1202  
518057

Phone: +86 755 86506902  
Email: sales.china@euresys.com

## JAPAN

### **Euresys Japan K.K.**

Expert Office Shinyokohama - Nisso Dai 18 Building, Shinyokohama 3-7-18, Kohoku  
Yokohama 222-0033 - Japan

〒222-0033

神奈川県横浜市港北区新横浜3-7-18 日総第18ビル エキスパートオフィス新横浜

Phone: +81 45 594 7259

Email: [sales.japan@euresys.com](mailto:sales.japan@euresys.com)

More at [www.euresys.com](http://www.euresys.com)

