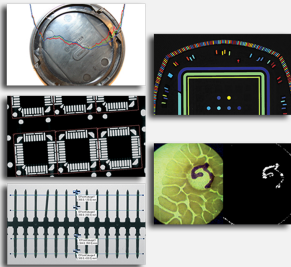


Inspection Bundle

Bundle of Open eVision inspection libraries



At a Glance

- Cost effective bundle of eVision's inspection libraries
- Includes EasyImage, EasyGauge, EasyMatch, EasyObject and EasyColor

Benefits

Open eVision Studio: Evaluation, prototyping and development tool

Open eVision Studio is the evaluation, prototyping and development tool of Open eVision. Its intuitive graphical user interface allows you to call and immediately see the result of any of eVision's 2D image processing functions. A scripting functionality generates the corresponding code, which can then be copied and pasted into your application.

Open eVision Studio is free (when using Open eVision 2.0 and above) and does not require any license.

Just click on [DOWNLOAD OPEN EVISION STUDIO](#) and install Open eVision. Sample images, manuals and sample programs are included.

EasyImage Description

- EasyImage includes operations usually performed as pre-processing steps to improve the image quality and obtain a good contrast between the background and the objects to be inspected.
- EasyImage supports gray-level and color images. Selected morphology functions are also optimized for binary (1-bit per pixel) and bi-level images.
- EasyImage includes numerous image processing functions, such as enhancement and restoration by linear or non-linear filtering, arithmetic and logic operations, geometric transformations for image registration, histogram analysis for thresholding, projection, ...

Flexible Masks

- Flexible Masks provide a powerful way of restricting the processing to freely selected parts of the image.
- They are supported by selected image analysis functions.

EasyGauge Description

EasyGauge is a cutting-edge measurement and dimension control library for use in gauging and metrology applications. By relying on proven sub-pixel edge detection and shape fitting algorithms, it allows determining the dimension, position, curvature, size, angle or diameter of manufactured parts with an excellent accuracy.

Robustness is ensured by powerful edge-point selection mechanisms that are intuitive and easy to tune, allowing measurement in cluttered images.

In addition, EasyGauge also supports the automatic measurement of parallel sides, thus providing means of measuring the thickness of flat or bent objects, as well as the precise location of corners.

EasyObject Description

The EasyObject library handles image segmentation, i.e. the decomposition of images into separate objects, also called blobs.

Once the objects have been constructed, they can be handled as independent entities. Various geometric parameters or features, such as area, width, or ellipse of inertia, can be computed for each object.

Objects of interest can be selected by means of their position or of their computed features.

EasyObject also supports the inspection of holes in defined objects. Holes are managed as the objects themselves, benefiting from the same geometrical features. EasyObject manages the relationship between objects and holes, defining parent objects for holes.

EasyColor Description

EasyColor includes a set of optimized color systems transformation functions and color analysis functions.

The color systems supported are RGB, XYZ, L*a*b*, L*u*v*, YUV, YIQ, ISH, LSH, VSH, LCH and YSH.

EasyColor provides efficient means to convert images between these systems and to transform color images into gray level images and vice versa.

EasyMatch Description

EasyMatch is a gray-level and color pattern matching library. It lets you train the system on a reference pattern and afterwards locate its occurrences in other images.

This tool is very convenient when the position of a given part is unknown in the field of view, or if the presence of parts must be controlled. The library works by using normalized correlation method, i.e. measuring discrepancies between the pattern and the target image.

Neo, a New, Flexible Licensing System

- Neo is the new Licensing System of Euresys. It is reliable, state-of-the-art, and is available now under Windows.
- Neo allows you to choose where to activate your license, either on a Neo Dongle or in a Neo Software Container. You buy a license, you decide later.
- Neo Dongles offer a sturdy hardware and provide the flexibility to be transferred from a PC to another.
- Neo Software Containers do not need any dedicated hardware, and instead are linked to the PC on which they have been activated.
- Neo ships with its own, dedicated, Neo License Manager, which comes in two flavours: An intuitive, easy to use, Graphical User Interface and a Command Line Interface that allows for easy automation of Neo licensing procedures.

Specifications

Ordering Information

Product code - Description	<ul style="list-style-type: none">• 4014 - Inspection Bundle for USB dongle• 4064 - Inspection Bundle for PAR dongle• 4114 - Inspection Bundle for board licensing• 4164 - Open Inspection Bundle for USB dongle• 4214 - Open Inspection Bundle for PAR dongle• 4264 - Open Inspect Bundle for soft-based licensing• 4314 - Open eVision Inspection Bundle
Optional accessories	<ul style="list-style-type: none">• 6512 - eVision/Open eVision USB Dongle (empty)• 6513 - eVision/Open eVision Parallel Dongle (empty)• 6514 - Neo USB Dongle (empty)



EMEA

Euresys SA

Liège Science Park - Rue du Bois Saint-Jean, 20
4102 Seraing - Belgium

Phone: +32 4 367 72 88

Email: sales.europe@euresys.com

EMEA

Sensor to Image GmbH

Lechtorstrasse 20 -
86956 Schongau - Germany

Phone: +49 8861 2369 0

Email: sales.europe@euresys.com

AMERICA

Euresys Inc.

27132-A Paseo Espada - Suite 421
San Juan Capistrano, CA 92675 - United States

Phone: +1 949 743 0612

Email: sales.americas@euresys.com

ASIA

Euresys Pte. Ltd.

750A Chai Chee Road - #07-15 Viva Business Park
Singapore 469001 - Singapore

Phone: +65 6445 4800

Email: sales.asia@euresys.com

CHINA

Euresys Shanghai Liaison Office

Unit 802, Tower B, Greenland The Center - No.500 Yunjin Road, Xuhui District
200232 Shanghai - China

Euresys 上海联络处

上海市徐汇区云锦路500号绿地汇中心B座802室
200232

Phone: +86 21 33686220

Email: sales.china@euresys.com

JAPAN

Euresys Japan K.K.

Expert Office Shinyokohama - Nisso Dai 18 Building, Shinyokohama 3-7-18, Kohoku
Yokohama 222-0033 - Japan

〒222-0033

神奈川県横浜市港北区新横浜3-7-18 日総第18ビル エキスパートオフィス新横浜

Phone: +81 45 594 7259

Email: sales.japan@euresys.com

More at www.euresys.com

