



For more information please contact:



BOCK OPTRONICS INC.
14 Steinway Blvd., Unit 7
Toronto, Ontario M9W 6M6

Tel: (416) 674-2804
sales@bockoptronics.ca
www.bockoptronics.ca



**Resolution
960**

KPC-DS81NU

Resolution 960 Series Low Light 750+ TVL
3-Axis Indoor 12VDC
Dome Camera

Ordering Information

NTSC Models

KPC-DS81NUB	Low Light, Day/Night, EWDR, Indoor, 3-Axis Dome, 12VDC, Black case
KPC-DS81NUW	Low Light, Day/Night, EWDR, Indoor, 3-Axis Dome, 12VDC, White case



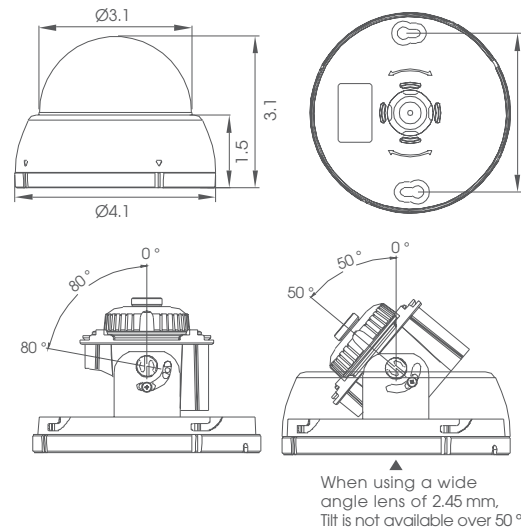
Resolution 960

KPC-DS81NU

Resolution 960 Series Low Light 750+ TVL
3-Axis Indoor 12VDC
Dome Camera

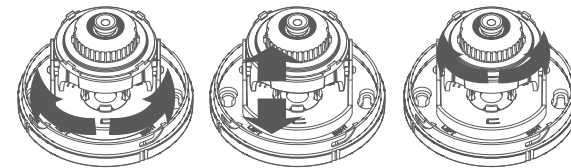


Dimension (Unit: inch)



3-Axis Gimbal

This camera is mounted on a 3-axis rotating platform, which allows an installer to easily adjust the field of view horizontally, vertically, and/or with a rotary movement. With this feature, you don't need to worry about where the camera is attached how it is oriented. and/or



* Specifications & Features are subject to change without prior notice.

Technical Specification

Imaging Device	1/3" Sony 960H Super HAD CCD II
Video Format	NTSC
Picture Elements	1020 (H) x 508 (V)
Effective Picture Elements	976 (H) x 494 (V)
Horizontal Resolution	More than 750 TVL from production cameras
Light Sensitivity	0.1 lux / F2.0
S/N Ratio	Over 50dB (AGC off)
Video Output	BNC 1.0V p-p 75Ω
Gamma Correction	0.45
Lens	3.6mm fixed
Auto Gain Control	Auto
Electronic Shutter	1/60-1/100,000 sec.
Sync. Mode	Internal
Day & Night	Auto Digital Day/Night
Digital Noise Reduction	2D-DNR On
White Balance	Anti Color-roll (prevents color roll with fluorescent illumination)
ETR/Electronic Wide Dynamic Range	On (Mode C, Luminance and Contrast = High)
Power Source	12VDC regulated supply required (+/- 10%; no ripple)
Power Consumption	100mA
Operating Temperature	5 °F ~ 140 °F (-15 °C ~ 60 °C)
Storage Temperature	-4 °F ~ 140 °F (-20 °C ~ 60 °C)
Humidity	Less than 80% non condensing
Dimensions	4.08" / 103.7mm diameter; 3.09" / 78.5mm high
Weight	~.35 lb / ~159g
Certifications	CE / FCC / RoHS

Key Features

- Resolution of over 750 horizontal TV lines for astounding image quality
- Super HAD II sensor delivers excellent low light sensitivity of .1 lux
- Automatic day/night: switches from color to B/W images at low levels of ambient light
- Anti Color-roll function maintains color balance independent of fluorescent or other types of illumination
- Adaptive Tone Curve Reproduction (ATR)/Digital Wide Dynamic Range expansion to deliver properly exposed images despite unbalanced lighting in the scene
- Provides 2D-Noise Reduction to improve picture clarity while enabling DVRs to improve disk storage utilization
- Astounding image clarity from the 3.6mm fixed lens
- Indoor 3-Axis plastic housing allows wide range of mounting flexibility
- Available with white or black housing to fit the décor.
- Low current draw of only 100mA@ 12VDC (regulated supply required)



INNOVATIVE
HIGH DEFINITION SURVEILLANCE



KPC-LD40NU

750TVL Low Profile Dome Camera

www.ktncusa.com

- 750TVL Horizontal Resolution
- $f = 3.6$ mm Board Lens
- Min. Illumination of 0.1 Lux (30 IRE)
- Digital Day & Night
- 3D DNR / AWB / AGC / DSS / WDR
- 1/3" 960H Double Scan Super HAD CCD II
- DC 12 V / AC 24 V Dual Power

Resolution
960

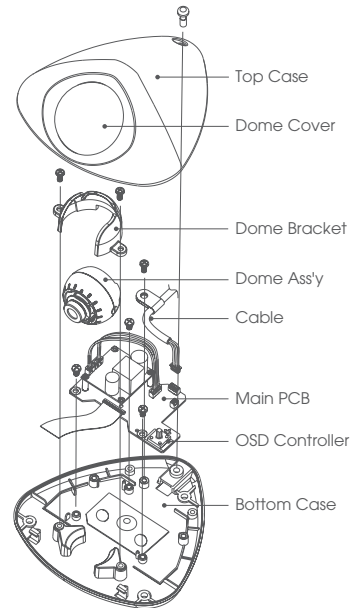
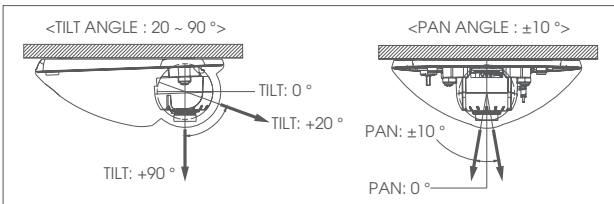
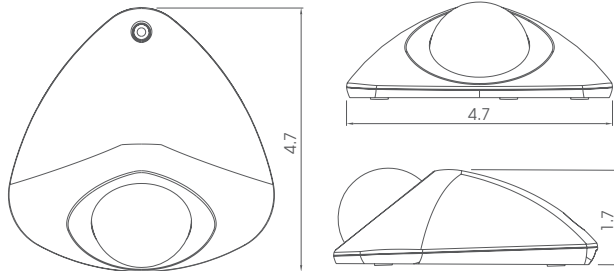
Resolution 960

- 750TVL Horizontal Resolution
- f = 3.6 mm Board Lens
- Min. Illumination of 0.1 Lux (30 IRE)
- Digital Day & Night
- 3D DNR / AWB / AGC / DSS / WDR
- 1/3" 960H Double Scan Super HAD CCD II
- DC 12 V / AC 24 V Dual Power



FC CE

General Feature Diagram Unit: (inch)



Digital Noise Reduction

The amount of low luminance noise is remarkably reduced and signal to-noise ratio (S/N) as well as horizontal resolution is improved, resulting in a clear and sharp image display even in dark condition.

KPC-LD40NU

750TVL Low Profile Dome Camera



Technical Specification

Signal System	NTSC		
Image Sensor	1/3" 960H Double Scan Super HAD CCD II		
Scanning System	2:1 Interlace		
Horizontal Resolution	750TV Lines		
Scanning Frequency	15.734 KHz x 59.94 Hz (H x V)		
Total Pixels	Effective Pixels	1020 x 508 (H x V)	976 x 494 (H x V)
Synchronization	Internal		
Lens	3.6 mm		
Lens Type	Fixed Board Lens		
S/N	More than 50dB (3DNR On)		
Gamma	r = 0.45		
Min. Illumination	0.1 Lux (30 IRE@F2.0, AGC: 36dB), 0.000001 Lux (DSS: x256)		
Shutter Speed	1/60 ~ 1/100,000 sec		
Day & Night	Digital Day & Night		
Day & Night Function	Auto, Color, B/W		
IP Rating	N/A		
Video Output Level	1.0 Vp-p Composite (75 Ω)		
On-Screen Display (OSD)	Built-in with Joystick		
BLC	On / Off (Level adjustment, Area selection)		
DNR	2D / 3D DNR (Level adjustable)		
White Balance	ATW, Push, User1, User2, Anti CR, Manual, Push-lock		
Privacy Masking	15 Zones (Area adjustment)		
Mirror	Image reverse (Normal / Flip)		
Motion Detection	4 Zones (Level adjustable, Area adjustment)		
WDR	On / Off (Level adjustable)		
Digital Zoom Ratio	3x		
Digital Slow Shutter	Off, 2 ~ 256 Field		
Other Function	Freeze, Contrast, Sharpness		
Language Option	English, Japanese, German, French, Russian, Portuguese, Spanish, Chinese		
Operating Temperature	14 °F ~ 122 °F (-10 °C ~ 50 °C)		
Storage Temperature	-4 °F ~ 140 °F (-20 °C ~ 60 °C)		
Humidity	Less than 80% RH		
Power Supply	DC 12 V (±10%), Max. 190 mA / AC 24 V (±10%), Max. 2.5 W		
Dimension	Weight	4.7 x 4.7 x 1.7 inch (119 x 119 x 42 mm)	0.4 lbs (200 g)



OMNI
Resolution 960
Everyday

 **KPC-DI36N**

750 TVL, Indoor, 3-Axis, 3.6mm
Super Compact Mini Dome

KPC-DI36NB: 3.6mm, Black | KPC-DI36NW: 3.6mm, White

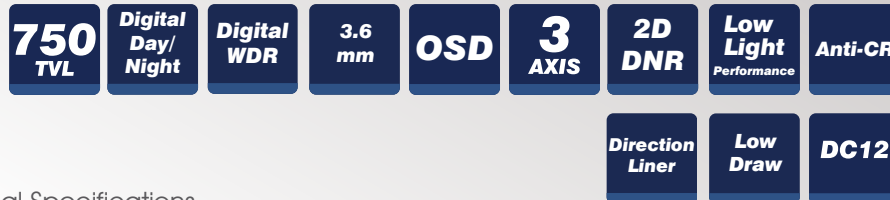


INNOVATIVE
HIGH DEFINITION SURVEILLANCE

OMNI
Resolution960
Everyday

KPC-DI36N

750 TVL, Indoor, 3-Axis, 3.6mm
Super Compact Mini Dome



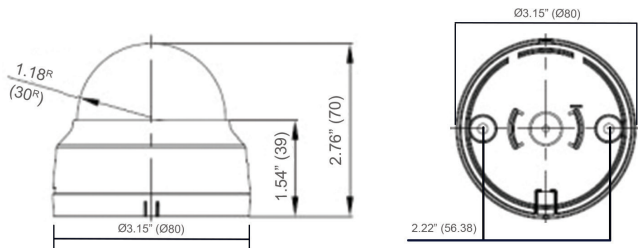
Technical Specifications

Imaging Device	1/3" 960H High Sensitivity CCD
Video Format	NTSC
Picture Elements	NTSC: 1020(H)x508(V)
Effective Picture Elements	NTSC: 976(H) x 494(V)
Horizontal Resolution	More than 750 TVL from production cameras
Sensitivity	0.1 lux / F2.0
S/N Ratio	Over 50dB (AGC off)
Video Output	BNC 1.0V p-p 75Ω
Gamma Correction	0.45
Lens Type	3.6mm fixed focal length; 67° wide Field of View
Automatic Gain Control	AUTO
Electronic Shutter	1/60 ~ 1/100,000 sec.
Sync. Mode	Internal
Day & Night	Auto Digital Day/Night
White Balance	Anti Color-roll (prevents color roll with fluorescent illumination)
Digital Wide Dynamic Range	On (Luminance and Contrast = High)
Digital Noise Reduction	2D-DNR On; level = medium
Power Source	12VDC regulated supply required (+/- 10%; no ripple)
Power Consumption	90mA max
Operating Temperature	5°F~140°F ; -15°C~60°C
Storage Temperature	-4°F ~ 140°F ; -20°C ~ 60°C
Humidity	Less than 80% non condensing
Dimensions	3.15" (80mm) diameter; 2.76" (70mm) high
Weight	4.23 oz./ 0.26 lb / 120g
Certifications	CE / FCC / RoHS

Features

- Resolution of over 750 horizontal TV lines for astounding image quality
- 960H High Sensitivity sensor delivers excellent low light sensitivity of .1 lux
- Automatic day/night: switches from color to B/W images at low levels of ambient light
- Anti Color-roll function maintains color balance independent of fluorescent or other types of illumination
- Digital Wide Dynamic Range delivers properly exposed images despite unbalanced scene lighting
- 2D-Noise Reduction improves picture clarity and DVR disk storage utilization
- Fixed focal length 3.6mm fixed lens covers a 67° field of view
- Indoor 3-Axis plastic housing allows wide range of mounting flexibility
- Integral liner to inhibit observation of camera direction
- Available with white or black housing to blend or contrast with the décor
- Low current draw of only 90mA@ 12VDC (regulated supply required)

Dimensions: Inches (mm)





INNOVATIVE
HIGH DEFINITION SURVEILLANCE



OMNI
Resolution 960
Everyday

 **KPC-DI28V12N**

750 TVL, Indoor, 3-Axis, 2.8-12mm
Easy Twist & Lock Mount

KPC-DI28V12NW: 2.8-12mm, White | KPC-DI28V12NB: 2.8-12mm, Black



INNOVATIVE
HIGH DEFINITION SURVEILLANCE



OMNI
Resolution 960
Everyday

KPC-DI28V1 2N

750 TVL, Indoor, 3-Axis, 2.8-12mm
Easy Twist & Lock Mount



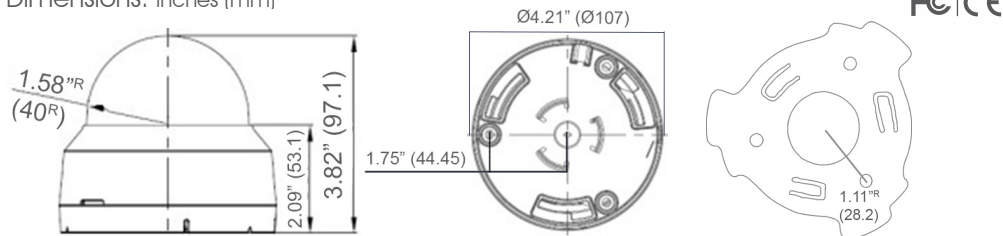
Technical Specifications

Imaging Device	1/3" 960H High Sensitivity CCD
Video Format	NTSC
Picture Elements	NTSC: 1020(H)x508(V)
Effective Picture Elements	NTSC: 976(H) x 494(V)
Horizontal Resolution	More than 750 TVL
Sensitivity	.001 lux native from sensor – no ghosting With lens: .2 lux
S/N Ratio	Over 50dB (AGC off)
Video Output	BNC 1.0V p-p 75Ω; video test point inside dome, cable supplied
Gamma Correction	0.45
Lens Type	2 Megapixel Aspheric Varifocal DC Iris 2.8–12mm F=1.6
Lens Positioning	3-axis flexible positioning for wall or ceiling mounting
Back Light Compensation	OFF/BLC/HLC Selectable
Auto Gain Control	Off/Low/Middle/High
Electronic Shutter	Auto; or 1/60, FLK, 1/250, 1/500, 1/1000, 1/2000, 1/4000, 1/5000, 1/10000, 1/100000
White Balance	ATW/AWB/AWC->SET/Anti-Color Roll/Manual
Sync. Mode	Internal (plus Anti Color Roll White Balance option above)
Day & Night	Electronic D/N control; Choose Auto or B/W
OSD Menu	Multiple functions using 3-axis joystick
OSD Languages	English, Spanish, Portuguese, German, Russian, Japanese, Chinese, French
2D-DNR	On/Off (level adjustable)
Digital Wide Dynamic Range	On/Off (Level Adjustable)
Mirror	Off/On
Motion Detection	Off/On for 4 selectable zones (On screen indication)
Privacy Mask	Off/On for 8 selectable zones
Lens Shading Correction	Off/On with adjustable level and center
Other OSD Functions	Camera Title with position and Font Color; Image Contrast/Sharpness; CRT/LCD display optimization; Negative Image; DPC(Dead Pixel Compensation)
Power Source	12VDC/24VAC automatic
Power Consumption	12VDC:170mA max. / 24VAC:2.2W max.
Operating Temperature	5°F~140°F ; -15°C~60°C
Environmental	Indoor; up to 80%RH (non-condensing)
Mechanical	Three axis positioning; plastic housing with snap on cover; clear bubble for maximum light transmission, with integral liner to inhibit observation of camera direction; choice of black body (B suffix) and white body (W suffix)
Mounting Options	Included easy-mount twist-on plate (attach to surface; housing base locks to plate); or, mount camera directly to surface if desired. Optional rough-in box adapter (KA-ICMP1) with integral twist-on fits 1 or 2 gang boxes or 4" octagonal boxes
Dimensions	4.21" (107mm) diameter, 3.82" (97.1mm) high With box adapter 5.91" (150mm) diameter x 4.18" (106.1mm) high
Weight	7.41 oz./ 0.46 lb / 210 g
Mounting Options	KA-ICMP1: Junction Box Plate
Certifications	CE / FCC / RoHS

Features

- Superlative resolution of over 750 horizontal TV lines for amazing image quality
- 960H CCD with sensor sensitivity of .001 lux in low light without DSS boost
- Full motion color or digital day/night during low ambient light without ghosting
- Simple and easy to use OSD setup menu
 - Digital Wide Dynamic Range for proper contrast in challenging bright or unbalanced scene lighting conditions
 - Anti Color Roll for proper white balance independent of fluorescent or other types of illumination
 - Optional Back Light Compensation (BLC) and Highlight Compensation (HLC)
 - Adjustable 2D-Noise Reduction to increase low light picture clarity and conserve DVR HDD disk space
 - Privacy masking for 8 configurable zones
 - Lens shading compensation for even exposure out to the lens periphery
- 2.8~12mm 2 Megapixel Aspheric Varifocal DC Iris lens to capture the desired field of view
- Dual voltage (12VDC/24VAC) with low current draw
- Service Video output for convenient installation, and ease of service
- 3-Axis gimbal for convenient wall or ceiling mounting with integral liner to inhibit observation of camera direction
- Included easy-mount twist-on plate (attach to surface; camera locks to plate); or, mount camera directly to surface
- Optional rough-in box adapter with integral twist-on fits 1 or 2 gang boxes or 4" octagonal boxes
- Choose between black and white color housing to blend or contrast with the décor.

Dimensions: Inches (mm)



Accessories



KA-ICMP1
Easy Twist
Junction Box
Plate

www.ktncusa.com

KPC-DI28V12NW: 2.8-12mm, White | KPC-DI28V12NB: 2.8-12mm, Black



INNOVATIVE
HIGH DEFINITION SURVEILLANCE



OMNI
Resolution 960
Everyday

 **KPC-DI28V1 2IRN**

750 TVL, Indoor, 3-Axis, 2.8-12mm, IR
Easy Twist & Lock Mount

KPC-DI28V12IRNW: 2.8-12mm, White | KPC-DI28V12IRNB: 2.8-12mm, Black



INNOVATIVE
HIGH DEFINITION SURVEILLANCE



OMNI
Resolution 960
Everyday

KPC-DI28V1 2IRN

750 TVL, Indoor, 3-Axis, 2.8-12mm, IR
Easy Twist & Lock Mount

750
TVL

True
Day/
Night

Digital
WDR

IR
100ft

2.8-
12mm

Low
Light
Performance

3
AXIS

BLC
HLC

Anti-CR

OSD

SERVICE
VIDEO

DC12
DUAL POWER
AC24V

Easy
Twist
Mount

2D
DNR

Privacy
Mask

Direction
Liner

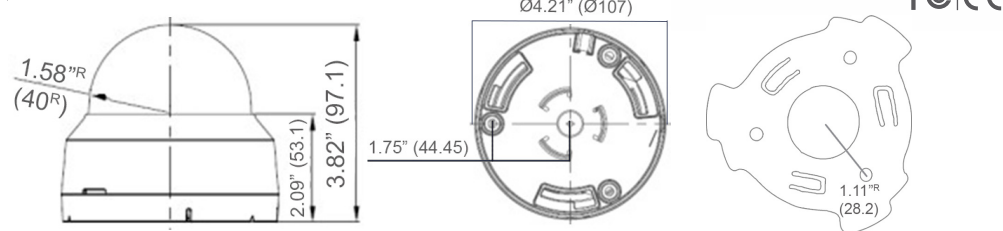
Technical Specifications

Imaging Device	1/3" 960H High Sensitivity CCD
Video Format	NTSC
Picture Elements	NTSC: 1020(H)x508(V)
Effective Picture Elements	NTSC: 976(H) x 494(V)
Horizontal Resolution	More than 750 TVL
Sensitivity	0 lux IR on; .001 lux native from sensor
IR LED	24 LEDs, 850nm
IR Range*	100'
Smart IR Exposure Adjust	Off/On; adjustable for gain, size and location of sensing area
S/N Ratio	Over 50dB (AGC off)
Video Output	BNC 1.0V p-p 75Ω; video test point inside dome, cable supplied
Gamma Correction	0.45
Lens Type	2 Megapixel Aspheric Varifocal DC Iris 2.8~12mm F=1.6
Lens Positioning	3-axis flexible positioning for wall or ceiling mounting
Back Light Compensation	OFF/BLC/HLC Selectable
Auto Gain Control	Off/Low/Middle/High
Electronic Shutter	Auto; or 1/60, FLK, 1/250, 1/500, 1/1000, 1/2000, 1/4000, 1/5000, 1/10000, 1/100000
White Balance	ATW/AWB/AWC->SET/Anti-Color Roll/Manual
Sync. Mode	Internal (plus Anti Color Roll White Balance option above)
Day & Night	Auto True D/N with motorized ICR; controlled by photo sensor
OSD Menu	Multiple functions using 3-axis joystick
OSD Languages	English, Spanish, Portuguese, German, Russian, Japanese, Chinese, French
2D-DNR	On/Off (level adjustable)
Digital Wide Dynamic Range	On/Off (Level Adjustable)
Mirror	Off/On
Motion Detection	Off/On for 4 selectable zones (On screen indication)
Privacy Mask	Off/On for 8 selectable zones
Lens Shading Correction	Off/On with adjustable level and center
Other OSD Functions	Camera Title with position and Font Color; Image Contrast/Sharpness; CRT/LCD display optimization; Negative Image; DPC(Dead Pixel Compensation)
Power Source	12VDC/24VAC automatic
Power Consumption	12VDC:320mA max. / 24VAC:3.8W max.
Operating Temperature	5°F~140°F ; -15°C~60°C
Environmental	Indoor; up to 80%RH (non-condensing)
Mechanical	Three axis positioning; plastic housing with snap on cover; clear bubble for maximum light transmission, with integral liner to inhibit observation of camera direction; choice of black body (B suffix) and white body (W suffix)
Mounting Options	Included easy-mount twist-on plate (attach to surface; housing base locks to plate); or, mount camera directly to surface if desired. Optional rough-in box adapter (KA-ICMP1) with integral twist-on fits 1 or 2 gang boxes or 4" octagonal boxes
Dimensions	4.21" (107mm) diameter, 3.82" (97.1mm) high With box adapter 5.91" (150mm) diameter x 4.18" (106.1mm) high
Weight	8.11 oz./ 0.51 lb. / 230 g
Mounting Options	KA-ICMP1: Junction Box Plate
Certifications	CE / FCC / RoHS

Features

- Superlative resolution of over 750 horizontal TV lines for amazing image quality
- 960H CCD sensor with high IR sensitivity.
- True Day/Night zero light operating range of 100 feet* or more (depending on scene reflectivity) from 24 IR LEDs with Smart automatic exposure level adjust to achieve the desired IR brightness in a user defined area
- Simple and easy to use OSD setup menu
- Digital Wide Dynamic Range for proper contrast in challenging bright or unbalanced scene lighting conditions
 - Anti Color Roll for proper white balance independent of fluorescent or other types of illumination
 - Optional Back Light Compensation (BLC) and Highlight Compensation (HLC)
 - Adjustable 2D-Noise Reduction to increase low light picture clarity and conserve DVR HDD disk space
 - Privacy masking for 8 configurable zones
 - Lens shading compensation for even exposure out to the lens periphery
- 2.8~12mm 2 Megapixel Aspheric Varifocal DC iris lens to capture the desired field of view
- Dual voltage (12VDC/24VAC) with low current draw
- Service Video output for convenient installation, and ease of service
- 3-Axis gimbal for convenient wall or ceiling mounting with integral liner to inhibit observation of camera direction
- Included easy-mount twist-on plate (attach to surface; camera locks to plate); or, mount camera directly to surface
- Optional rough-in box adapter with integral twist-on fits 1 or 2 gang boxes or 4" octagonal boxes
- Choose between black and white color housing to blend or contrast with the décor.

Dimensions (Inch+ mm)



Accessories



KA-ICMP1
Easy Twist
Junction Box
Plate

*As with all IR cameras, IR range will vary based on scene IR reflectivity and illumination
KT&C America, Inc. reserves the right to make changes to improve our products at any time without notice; we are not responsible for misprints.



OMNI
Resolution 960
Everyday

 **KPC-DNS102NUV**

Digital Day/Night, 750 TVL, Indoor, 3-Axis,
2.8-12mm, Dual Voltage



INNOVATIVE
HIGH DEFINITION SURVEILLANCE



OMNI
Resolution960
Everyday

KPC-DNS102NUV

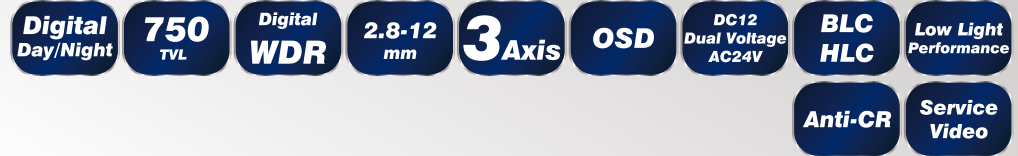
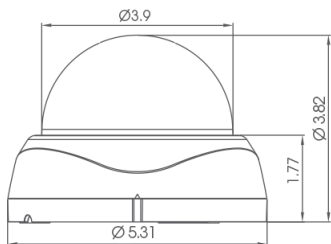
Digital Day/Night, 750 TVL, Indoor, 3-Axis,
2.8-12mm, Dual Voltage

Features

- Superlative resolution of over 750 horizontal TV lines for amazing image quality
- 960H CCD with sensor sensitivity of .01 lux in low light without DSS boost
- Full motion color or digital day/night during low ambient light without ghosting
- Simple and easy to use OSD setup menu
 - Digital Wide Dynamic Range for proper contrast in challenging bright or unbalanced scene lighting conditions
 - Anti Color Roll for proper white balance independent of fluorescent or other types of illumination
 - Optional Back Light Compensation (BLC) and Highlight Compensation (HLC)
 - Adjustable 2D-Noise Reduction to increase low light picture clarity and conserve DVR HDD disk space
 - Privacy masking for 8 configurable zones
 - Lens shading compensation for even exposure out to the lens periphery
- 2.8~12mm 2 Megapixel Aspheric Varifocal DC Iris lens to capture the desired field of view
- Dual voltage (12VDC/24VAC) with Anti Color Roll
- Service Video output for convenient installation, and ease of service
- 3-Axis gimbal for convenient wall or ceiling mounting
- Choose between black and white color housing to blend or contrast with the décor



Dimensions: Inches (mm)



Imaging Device	1/3" 960H High Sensitivity CCD
Video Format	NTSC
Picture Elements	NTSC: 1020(H)x508(V)
Effective Picture Elements	NTSC: 976(H) x 494(V)
Horizontal Resolution	More than 750 TVL
Sensitivity	.01 lux native from sensor – no ghosting With lens: .1 lux
S/N Ratio	Over 50dB (AGC off)
Video Output	BNC 1.0V p-p 75Ω; video test point inside dome, cable supplied
Gamma Correction	0.45
Lens Type	2 Megapixel Aspheric Varifocal DC Iris 2.8~12mm F=1.6
Lens Positioning	3-axis flexible positioning for wall or ceiling mounting
Back Light Compensation	OFF/BLC/HLC Selectable
Auto Gain Control	Off/Low/Middle/High
Electronic Shutter	Auto; or 1/60, FLK, 1/250, 1/500, 1/1000, 1/2000, 1/4000, 1/5000, 1/10000, 1/100000
White Balance	ATW/AWB/AWC->SET/Anti-Color Roll/Manual
Sync. Mode	Internal (plus Anti Color Roll White Balance option above)
Day & Night	Digital D/N control; Choose Auto, Color or B/W
OSD Menu	Multiple functions using 3-axis joystick
OSD Languages	English, Spanish, Portuguese, German, Russian, Japanese, Chinese, French
2D-DNR	On/Off (level adjustable)
Digital Wide Dynamic Range	On/Off (Level Adjustable)
Mirror	Off/On
Motion Detection	Off/On for 4 selectable zones (On screen indication)
Privacy Mask	Off/On for 8 selectable zones
Lens Shading Correction	Off/On with adjustable level and center
Other OSD Functions	Camera Title with position and Font Color; Image Contrast/Sharpness; CRT/LCD display optimization; Negative Image; DPC (Dead Pixel Compensation)
Power Source	12VDC/24VAC automatic
Power Consumption	12VDC:160mA max. / 24VAC:1.8W max.
Operating Temperature	5°F~140°F ; -15°C~60°C
Environmental	Indoor; up to 80%RH (non-condensing)
Mechanical	Three axis, twist-open dome; choice of black body (no suffix) and white body (W suffix)
Dimensions	5.31" (135mm) diameter, 3.82" (97mm) high
Weight	.76 lbs. / 343 grams
Certifications	CE / FCC RoHS

www.ktncusa.com

KPC-DNS102NUV17B: 2.8-12mm Black, KPC-DNS102NUV17W: 2.8-12mm, White



OMNI
Resolution 960
Everyday

 **KPC-DNNS102NUV**

True Day/Night 750 TVL, Indoor, 3-Axis,
2.8-12mm, 131' IR Range, Dual Voltage

KPC-DNNS102NUV18B: 2.8-12mm Black, KPC-DNNS102NUV18W: 2.8-12mm, White