

KPC-LDD45NU

750TVL Outdoor Dome Camera

www.ktncusa.com

- 750TVL Horizontal Resolution
- f = 2.4 mm, 2.97 mm, 3.6 mm, 6 mm, 8 mm
- IP66 (Weather Resistant)
- 2D DNR / BLC / AWB / AGC / DSR / HLC
- Digital Day & Night
- 1/3" 960H Double Scan Super HAD CCD II
- DC 12 V / AC 24 V Dual Power

For more information please contact:



BOCK OPTRONICS INC.
14 Steinway Blvd., Unit 7
Toronto, Ontario M9W 6M6

Tel: (416) 674-2804
sales@bockoptronics.ca
www.bockoptronics.ca



Resolution
960



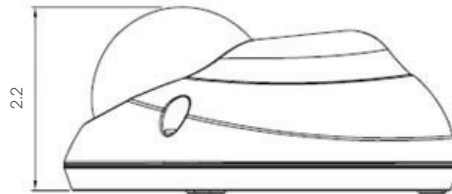
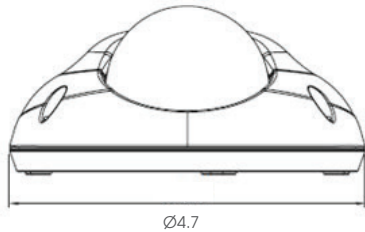
Resolution 960

- 750TVL Horizontal Resolution
- f = 2.4 mm, 2.97 mm, 3.6 mm, 6 mm, 8 mm
- IP66 (Weather Resistant)
- 2D DNR / BLC / AWB / AGC / DSS / HLC
- Digital Day & Night
- 1/3"960H Double Scan Super HAD CCD II
- DC 12 V / AC 24 V Dual Power



FC | CE

General Feature Diagram Unit: (inch)



DNR (Digital Noise Reduction)

The amount of low luminance noise is remarkably reduced and signal-to-noise ratio (S/N) as well as horizontal resolution dramatically improved, it results in a clear and sharp image display even in the dark lighting condition.



CONVENTIONAL CAMERA



KPC-LDD45

D-WDR (D-Wide Dynamic Range)

To get detailed information from dark and bright combination Image without any saturation, the D-WDR Technology is required. It combines bright areas with high shutter speed exposure and dark areas with low shutter speed exposure into one composite image



KPC-LDD45NU

750TVL Outdoor Dome Camera



Technical Specification

Signal System	NTSC		
Image Sensor	1/3" 960H Double Scan Super HAD CCD II		
Scanning System	2:1 Interlace		
Horizontal Resolution	750TV Lines		
Scanning Frequency	15.734 KHz x 59.94 Hz (H x V)		
Total Pixels	Effective Pixels	1020 x 508 (H x V)	976 x 494 (H x V)
Synchronization	Internal		
Lens	2.4 mm, 2.97 mm, 3.6 mm, 6 mm, 8 mm		
Lens Type	Fixed Board Lens		
S/N	More than 50dB (3DNR On)		
Gamma	r = 0.45		
Min. Illumination	0.1 Lux (30 IRE@F2.0, AGC: 36 dB), 0.000001 Lux (DSS: x256)		
Shutter Speed	1/60 ~ 1/100,000 sec		
Day & Night	Digital Day & Night		
Day & Night Function	Auto, Color, B/W		
IP Rating	IP66 (Weather Resistant)		
Video Output Level	1.0 Vp-p Composite (75 Ω)		
On-Screen Display (OSD)	Built-in with Joystick		
BLC	On / Off (Level adjustment, Area selection)		
DNR	2D / 3D DNR (Level adjustable)		
White Balance	ATW, Push, User1, User2, Anti CR, Manual, Push-lock		
Privacy Masking	15 Zones (Area adjustment)		
Mirror	Image reverse (Normal, H-Flip, V-Flip, HV-Flip)		
Motion Detection	4 Zones (Level adjustable, Area adjustment)		
WDR	On / Off (Level adjustable)		
Digital Zoom Ratio	3x		
Digital Slow Shutter	Off, 2 ~ 256 Field		
Other Function	Freeze, Contrast, Sharpness		
Language Option	English, Japanese, German, French, Russian, Portuguese, Spanish, Chinese, Hindi, Tamil, Turkish, Arabic, Farsi		
Operating Temperature	14 °F ~ 122 °F (-10 °C ~ 50 °C)		
Storage Temperature	-4 °F ~ 140 °F (-20 °C ~ 60 °C)		
Power Supply	DC 12 V (±10%), Max. 200 mA / AC 24 V (±10%), Max. 2.5 W		
Dimension	Ø4.7 x 2.2 inch (Ø120 x 55 mm)		
Weight	0.77 lbs (350 g)		



INNOVATIVE
HIGH DEFINITION SURVEILLANCE



KPC-LND45NU

750TVL Outdoor Dome Camera

www.ktncusa.com

- 750TVL Horizontal Resolution
- f = 2.97 mm, 3.6 mm, 6 mm, 8 mm
- IP66 (Weather Resistant)
- 3D DNR / BLC / AWB / AGC / DSS / HLC
- True Day & Night with ICR Mechanism
- 1/3" 960H Double Scan Super HAD CCD II
- DC 12 V / AC 24 V Dual Power

Resolution
960



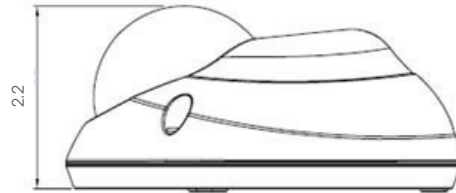
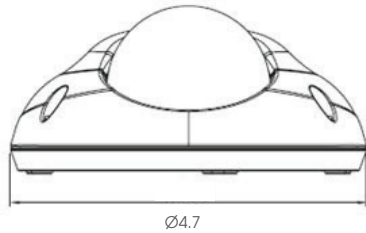
Resolution 960

- 750TVL Horizontal Resolution
- f = 2.97 mm, 3.6 mm, 6 mm, 8 mm
- IP66 (Weather Resistant)
- 3D DNR / BLC / AWB / AGC / DSS / HLC
- True Day & Night with ICR Mechanism
- 1/3"960H Double Scan Super HAD CCD II
- DC 12 V / AC 24 V Dual Power



FC CE

General Feature Diagram Unit: (inch)



DNR (Digital Noise Reduction)

The amount of low luminance noise is remarkably reduced and signal-to-noise ratio (S/N) as well as horizontal resolution dramatically improved, it results in a clear and sharp image display even in the dark lighting condition.



CONVENTIONAL CAMERA



KPC-LND45

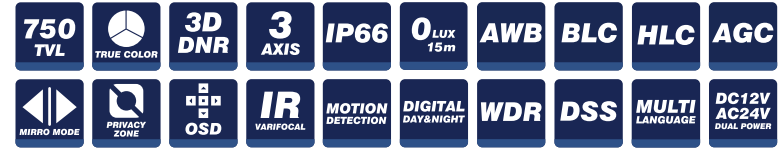
D-WDR (D-Wide Dynamic Range)

To get detailed information from dark and bright combination Image without any saturation, the D-WDR Technology is required. It combines bright areas with high shutter speed exposure and dark areas with low shutter speed exposure into one composite image



KPC-LND45NU

750TVL Outdoor Dome Camera



Technical Specification

Signal System	NTSC		
Image Sensor	1/3" 960H Double Scan Super HAD CCD II		
Scanning System	2:1 Interlace		
Horizontal Resolution	750TV Lines		
Scanning Frequency	15.734 KHz x 59.94 Hz (H x V)		
Total Pixels	Effective Pixels	1020 x 508 (H x V)	976 x 494 (H x V)
Synchronization	Internal		
Lens	2.97 mm, 3.6 mm, 6 mm, 8 mm		
Lens Type	Fixed Board Lens		
S/N	More than 50 dB (3DNR On)		
Gamma	r = 0.45		
Min. Illumination	0 Lux (IR LED On)		
Shutter Speed	1/60 ~ 1/100,000 sec		
Day & Night	True Day & Night with ICR Mechanism		
IR LED	Distance	15 IR LEDs	Max. 50 ft (15 m)
Day & Night Function	Auto, Color, B/W		
IP Rating	IP66 (Weather Resistant)		
Video Output Level	1.0 Vp-p Composite (75 Ω)		
On-Screen Display (OSD)	Built-in with Joystick		
BLC	On / Off (Level adjustment, Area selection)		
DNR	2D / 3D DNR (Level adjustable)		
White Balance	ATW, Push, User1, User2, Anti CR, Manual, Push-lock		
Privacy Masking	15 Zones (Area adjustment)		
Mirror	Image reverse (Normal, H-Flip, V-Flip, HV-Flip)		
Motion Detection	4 Zones (Level adjustable, Area adjustment)		
WDR	On / Off (Level adjustable)		
Digital Zoom Ratio	3x		
Digital Slow Shutter	Off, 2 ~ 256 Field		
Other Function	Freeze, Contrast, Sharpness		
Language Option	English, Japanese, German, French, Russian, Portuguese, Spanish, Chinese, Hindi, Tamil, Turkish, Arabic, Farsi		
Operating Temperature	14 °F ~ 122 °F (-10 °C ~ 50 °C)		
Storage Temperature	-4 °F ~ 140 °F (-20 °C ~ 60 °C)		
Power Supply	DC12V (±10%), Max. 340mA / AC24V (±10%), Max. 4.0W		
Dimension	Ø4.7 x 2.2 inch (Ø120 x 55 mm)		
Weight	0.8 lbs (350g)		



For more information please contact:



BOCK OPTRONICS INC.
14 Steinway Blvd., Unit 7
Toronto, Ontario M9W 6M6

Tel: (416) 674-2804
sales@bockoptronics.ca
www.bockoptronics.ca

OMNI
Resolution 960
Everyday

 **KPC-DR28V12**

Outdoor Dome: Digital Day/Night, 750 TVL,
OSD, 2.8-12mm, IP68, -40°, Dual Voltage

KPC-DR28V12: 2.8-12mm



INNOVATIVE
HIGH DEFINITION SURVEILLANCE



OMNI
Resolution 960
Everyday

KPC-DR28V12

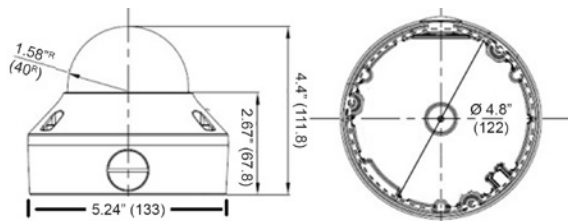
Outdoor Dome: Digital Day/Night, 750 TVL, OSD, 2.8-12mm, IP68, -40°, Dual Voltage

Features

- Superlative resolution of over 750 horizontal TV lines for amazing image quality
- 960H CCD with sensor sensitivity of .001 lux in low light without DSS boost
- Full motion color or digital day/night during low ambient light without ghosting
- 3-Axis gimbal for convenient wall or ceiling mounting with integral liner to inhibit observation of camera direction
- Simple and easy to use OSD setup menu
 - Digital Wide Dynamic Range for proper contrast in challenging bright or unbalanced scene lighting conditions
 - Anti Color Roll for proper white balance independent of fluorescent or other types of illumination
 - Optional Back Light Compensation (BLC) and Highlight Compensation (HLC)
 - Adjustable 2D-Noise Reduction to increase low light picture clarity and conserve DVR HDD disk space
 - Privacy masking for 8 configurable zones
 - Lens shading compensation for even exposure out to the lens periphery
- 2.8~12mm 2Megapixel Aspheric Varifocal DC iris lens to capture the desired field of view
- Dual voltage (12VDC/24VAC) with low current draw
- IP68 weatherproof construction (mounting screws sealed outside of critical electronics) with side 3/4" conduit access
- Extreme Operating temperature range down to -40 degrees
- Service Video output for convenient installation, and ease of service
- Optional KA-RCMP1 rough-in box adapter fits 1 or 2 gang or 4" octagonal/square/round boxes

Dimensions: Inches (mm)

Accessories:



KA-RCMP1
Optional
Electrical Box
Mounting Plate



Technical Specifications

Lens Type	2 Megapixel Aspheric Varifocal DC Iris 2.8~12mm F=1.6
Lens Positioning	3-axis flexible positioning for wall or ceiling mounting
Back Light Compensation	OFF/BLC/HLC Selectable
Auto Gain Control	Off/Low/Middle/High
Electronic Shutter	Auto; or 1/60, FLK, 1/250, 1/500, 1/1000, 1/2000, 1/4000, 1/5000, 1/10000, 1/100000
White Balance	ATW/AWB/AWC->SET/Anti-Color Roll/Manual
Sync. Mode	Internal (plus Anti-Chroma Crawl White Balance option above)
Day & Night	Electronic D/N control; Choose Auto or B/W
OSD Menu	Multiple functions using 3-axis joystick
OSD Languages	English, Spanish, Portuguese, German, Russian, Japanese, Chinese, French
2D-DNR	On/Off (Level Adjustable)
Digital Wide Dynamic Range	On/Off (Level Adjustable)
Mirror	Off/On
Motion Detection	Off/On for 4 selectable zones (On screen indication)
Privacy Mask	Off/On for 8 selectable zones
Lens Shading Correction	Off/On with adjustable level and center
Other OSD Functions	Camera Title with position, Font Color, Image Contrast/Sharpness, CRT/LCD display optimization, Negative Image, DPC(Dead Pixel Compensation)
Power Source	12VDC/24VAC
Power Consumption	12VDC:170mA max. / 24VAC:2.2W max.
Operating Temperature	-40°F~140°F ; -40°C~60°C
Environmental	IP68 weatherproof
Mechanical	Vandal proof construction
Dimensions	5.24"(133mm) diameter., 4.4"(111.8mm) high With box adapter 5.91" (150mm) diameter x 4.72" (119.8mm) high
Weight	25.04 oz./ 1.56 lb. / 710g
Mounting Options	Side conduit fitting; Optional rough-in box adapter KA-RCMP1 fits 1 or 2 gang or 4" octagonal/square/round boxes
Certifications	CE / FCC / RoHS

www.ktncusa.com

KPC-DR28V12: 2.8-12mm



OMNI
Resolution 960
Everyday

 **KPC-DR28V1 2IR**

Outdoor, IR Dome: True Day/Night, 750 TVL,
OSD, 2.8-12mm, IP68, 100' Smart IR Range,
-40°, Dual Voltage

KPC-DR28V1 2IRN: 2.8-12mm



INNOVATIVE
HIGH DEFINITION SURVEILLANCE



OMNI Resolution 960 Everyday

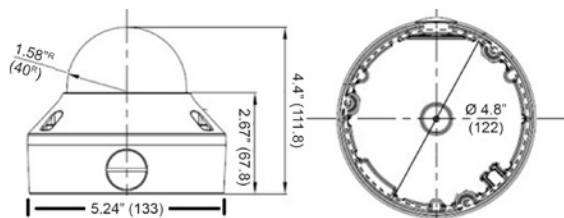
KPC-DR28V1 2IR

Outdoor, IR Dome: True Day/Night, 750 TVL, OSD, 2.8-12mm, IP68, 100' Smart IR Range, -40°, Dual Voltage

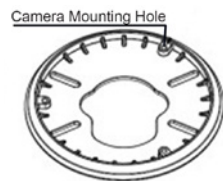
Features

- Superlative resolution of over 750 horizontal TV lines for amazing image quality
- 960H CCD sensor with high IR sensitivity.
- True Day/Night zero light operating range of 100 feet or more (depending on scene reflectivity) from 24 IR LEDs with Smart automatic exposure level adjust to achieve the desired IR brightness in a user defined area
- 3-Axis gimbal for convenient wall or ceiling mounting with integral liner to inhibit observation of camera direction
- Simple and easy to use OSD setup menu
 - Digital Wide Dynamic Range for proper contrast in challenging bright or unbalanced scene lighting conditions
 - Anti Color Roll for proper white balance independent of fluorescent or other types of illumination
 - Programmable Back Light Compensation (BLC) and Highlight Compensation (HLC)
 - Adjustable 2D-Noise Reduction to increase low light picture clarity and conserve DVR HDD disk space
 - Privacy masking for 8 configurable zones
 - Lens shading compensation for even exposure out to the lens periphery
- 2.8~12mm 2 Megapixel Aspheric Varifocal DC Iris lens to capture the desired field of view
- Dual voltage (12VDC/24VAC) with low current draw
- IP68 weatherproof construction (mounting screws sealed outside of critical electronics) with side 3/4" conduit access
- Extreme Operating temperature range down to -40 degrees
- Service Video output for convenient installation, and ease of service
- Optional KA-RCMP1 rough-in box adapter fits 1 or 2 gang or 4" octagonal/square/round boxes

Dimensions (Unit: mm)



Accessories:



KA-RCMP1
Optional
Electrical Box
Mounting Plate



Technical Specifications

Imaging Device	1/3" 960H High Sensitivity CCD
Video Format	NTSC
Picture Elements	NTSC: 1020(H)x508(V)
Effective Picture Elements	NTSC: 976(H) x 494(V)
Horizontal Resolution	More than 750 TVL
Sensitivity	0 lux IR on; .001 lux native from sensor
IR LED	24 LEDs, 850nm
IR Range*	100' (* As with all IR cameras, IR range will vary based on scene IR reflectivity and illumination)
Smart IR Exposure Adjust	Off/On; adjustable for gain, size and location of sensing area
S/N Ratio	Over 50dB (AGC off)
Video Output	BNC 1.0V p-p 75Ω; video test point inside dome, cable supplied
Gamma Correction	0.45
Lens Type	2 Megapixel Aspheric Varifocal DC Iris 2.8~12mm F=1.6
Lens Positioning	3-axis flexible positioning for wall or ceiling mounting
Back Light Compensation	OFF/BLC/HLC Selectable
Auto Gain Control	Off/Low/Middle/High
Electronic Shutter	Auto; or 1/60, FLK, 1/250, 1/500, 1/1000, 1/2000, 1/4000, 1/5000, 1/10000, 1/100000
White Balance	ATW/AWB/AWC->SET/Anti-Color Roll/Manual
Sync. Mode	Internal (plus Anti-Chroma Crawl White Balance option above)
Day & Night	Auto True D/N with motorized ICR; controlled by photo sensor
OSD Menu	Multiple functions using 3-axis joystick
OSD Languages	English, Spanish, Portuguese, German, Russian, Japanese, Chinese, French
2D-DNR	On/Off (Level Adjustable)
Digital Wide Dynamic Range	On/Off (Level Adjustable)
Mirror	Off/On
Motion Detection	Off/On for 4 selectable zones (On screen indication)
Privacy Mask	Off/On for 8 selectable zones
Lens Shading Correction	Off/On with adjustable level and center
Other OSD Functions	Camera Title with position, Font Color, Image Contrast/Sharpness, CRT/LCD display optimization, Negative Image, DPC(Dead Pixel Compensation)
Power Source	12VDC/24VAC
Power Consumption	12VDC:320mA max. / 24VAC:3.8W max.
Operating Temperature	-40°F~140°F ; -40°C~60°C
Environmental	IP68 weatherproof
Mechanical	Vandal proof construction
Dimensions	5.24"(133mm) diameter., 4.4"(111.8mm) high With box adapter 5.91" (150mm) diameter x 4.72" (119.8mm) high
Weight	25.75 oz./ 1.61 lb. / 730g
Mounting Options	Side conduit fitting; Optional KA-RCMP1 rough-in box adapter fits 1 or 2 gang or 4" octagonal/square/round boxes
Certifications	CE / FCC / RoHS

www.ktncusa.com

KPC-DR28V1 2IRN: 2.8-12mm



OMNI
Resolution 960
Everyday

 **KPC-VDNS102NUV**

Outdoor, Digital Day/Night 750 TVL,
Rugged, 3-Axis, 2.8-12mm, IP66,
Dual Voltage, -40°



INNOVATIVE
HIGH DEFINITION SURVEILLANCE



OMNI Resolution 960 Everyday

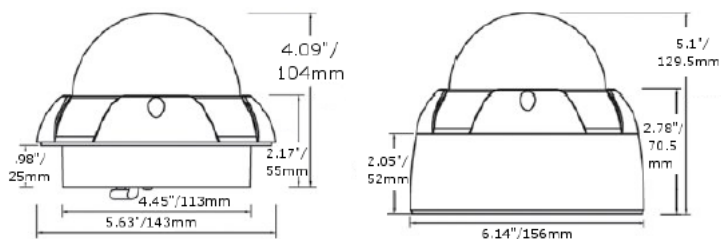
KPC-VDNS102NUV

Outdoor, Digital Day/Night 750 TVL,
Rugged, 3-Axis, 2.8-12mm, IP66, Dual
Voltage, -40°

Features

- Superlative resolution of over 750 horizontal TV lines for amazing image quality
- 960H CCD sensor with high IR sensitivity in low light without DSS boost
- Full motion color or digital day/night during low ambient light without ghosting
- Simple and easy to use OSD setup menu
 - Digital Wide Dynamic Range for proper contrast in challenging bright or unbalanced scene lighting conditions
 - Anti Color Roll for proper white balance independent of fluorescent or other types of illumination
 - Programmable Back Light Compensation (BLC) and Highlight Compensation (HLC)
 - Adjustable 2D-Noise Reduction to increase low light picture clarity and conserve DVR HDD disk space
 - Privacy masking for 8 configurable zones
 - Lens shading compensation for even exposure out to the lens periphery
- 2.8~12mm 2 Megapixel Aspheric Varifocal DC iris lens to capture the desired field of view
- Dual voltage (12VDC/24VAC) with Anti Color Roll
- IP66 weather resistant
- Extreme Operating temperature down to -40 degrees
- Service Video output for convenient installation, and ease of service
- 3-Axis gimbal for convenient wall or ceiling mounting
- Flush or Surface mountable (surface mounting/splice box fits standard 3/4" conduit and electrical boxes)
- KA-WM100 Optional wall mount bracket with 3/4" conduit fitting

Dimensions: Inches (mm)



Accessories



KA-WM100
Wall Mounting Bracket
with 1/2" conduit fittings
top and bottom

Digital Day/Night

750 TVL

Digital WDR

2.8-12 mm

3 Axis

Rugged Housing

IP66 Water Resistant

-40°F

DC12 Dual Voltage AC24V

Surface or Flush Mount

OSD

BLC HLC

Low Light Performance

Anti-CR

Service Video

Imaging Device	1/3" 960H High Sensitivity CCD
Video Format	NTSC
Picture Elements	NTSC: 1020(H)x508(V)
Effective Picture Elements	NTSC: 976(H) x 494(V)
Horizontal Resolution	More than 750 TVL
Sensitivity	.01 lux native from sensor – no ghosting With lens: .1 lux
S/N Ratio	Over 50dB (AGC off)
Video Output	BNC 1.0V p-p 75Ω; video test point inside dome, cable supplied
Gamma Correction	0.45
Lens Type	2 Megapixel Aspheric Varifocal DC Iris 2.8~12mm F=1.6
Lens Positioning	3-axis flexible positioning for wall or ceiling mounting
Back Light Compensation	OFF/BLC/HLC Selectable
Auto Gain Control	Off/Low/Middle/High
Electronic Shutter	Auto; or 1/60, FLK, 1/250, 1/500, 1/1000, 1/2000, 1/4000, 1/5000, 1/10000, 1/100000
White Balance	ATW/AWB/AWC->SET/Anti-Color Roll/Manual
Sync. Mode	Internal (plus Anti-Color Roll White Balance option above)
Day & Night	Digital D/N control; Choose Auto, Color or B/W
OSD Menu	Multiple functions using 3-axis joystick
OSD Languages	English, Spanish, Portuguese, German, Russian, Japanese, Chinese, French
2D-DNR	On/Off (Level Adjustable)
Digital Wide Dynamic Range	On/Off (Level Adjustable)
Mirror	Off/On
Motion Detection	Off/On for 4 selectable zones (On screen indication)
Privacy Mask	Off/On for 8 selectable zones
Lens Shading Correction	Off/On with adjustable level and center
Other OSD Functions	Camera Title with position, Font Color, Image Contrast/Sharpness, CRT/LCD display optimization, Negative Image, DPC (Dead Pixel Compensation)
Power Source	12VDC/24VAC
Power Consumption	12VDC:1.60mA max. / 24VAC:1.8W max.
Operating Temperature	-40°F~140°F ; -40°C~60°C
Environmental	IP66 weather resistant
Mechanical	Vandal proof dome; back box accepts 3/4" conduit fittings and hole pattern matches various standard electrical boxes; remove back box for flush mounting
Dimensions	Surface: 6.14"/156mm dia. x 5.1"/129.5mm high Flush: 5.63"/143mm dia. X 3.11"/79mm visible & .98"/25mm behind surface
Weight	1.2 pounds flush mounted; 2.8 pounds with surface mount conduit compatible back box
Certifications	CE / FCC RoHS
Environmental	IP66 weather resistant



www.ktncusa.com

KPC-VDNS102NUV17: 2.8-12mm



OMNI
Resolution 960
Everyday

 **KPC-VNNS102NUV**

Outdoor, True Day/Night 750 TVL,
Rugged, 3-Axis, 2.8-12mm, 131' IR
Range, IP66, Dual Voltage, -40°

KPC-VNNS102NUV: 2.8-12mm



INNOVATIVE
HIGH DEFINITION SURVEILLANCE

OMNI Resolution960 Everyday

KPC-VNNS102NUV

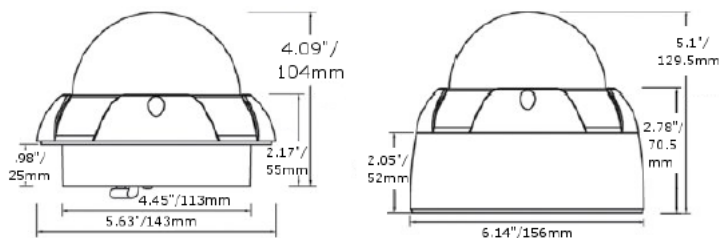
Outdoor, True Day/Night 750 TVL,
Rugged, 3-Axis, 2.8-12mm, 131' IR
Range, IP66, Dual Voltage, -40°



Features

- Superlative resolution of over 750 horizontal TV lines for amazing image quality
- 960H CCD sensor with high IR sensitivity
- True Day/Night zero light operating range of 131 feet or more from 30 IR LEDs (depending on scene reflectivity) with Smart automatic exposure level adjust to achieve the desired IR brightness in a user defined area
- Simple and easy to use OSD setup menu
 - Digital Wide Dynamic Range for proper contrast in challenging bright or unbalanced scene lighting conditions
 - Anti Color Roll for proper white balance independent of fluorescent or other types of illumination
 - Programmable Back Light Compensation (BLC) and Highlight Compensation (HLC)
 - Adjustable 2D-Noise Reduction to increase low light picture clarity and conserve DVR HDD disk space
 - Privacy masking for 8 configurable zones
 - Lens shading compensation for even exposure out to the lens periphery
- 2.8~12mm 2 Megapixel Aspheric Varifocal DC iris lens to capture the desired field of view
- Dual voltage (12VDC/24VAC) with Anti Color Roll
- IP66 weather resistant
- Extreme Operating temperature down to -40 degrees
- Service Video output for convenient installation, and ease of service
- 3-Axis gimbal for convenient wall or ceiling mounting
- Flush or Surface mountable (surface mounting/splice box fits standard 3/4" conduit and electrical boxes)
- KA-WM100 Optional wall mount bracket with 3/4" conduit fitting.

Dimensions: Inches (mm)



Accessories



KA-WM100
Wall Mounting Bracket
with 1/2" conduit fittings
top and bottom

True Day/Night	750 TVL	Digital WDR	131' Smart IR Range	2.8-12 mm	3 Axis	Rugged Housing	IP66 Water Resistant	-40°F
DC12 Dual Voltage AC24V	Surface or Flush Mount	OSD	BLC HLC	Low Light Performance	Anti-CR	Service Video		

Imaging Device	1/3" 960H High Sensitivity CCD
Video Format	NTSC
Picture Elements	NTSC: 1020(H)x508(V)
Effective Picture Elements	NTSC: 976(H) x 494(V)
Horizontal Resolution	More than 750 TVL
Sensitivity	0 lux IR on; .01 lux native from sensor
IR LED	30 LEDs, 850nm
IR Range*	131' (* As with all IR cameras, IR range will vary based on scene IR reflectivity and illumination)
Smart IR Exposure Adjust	Off/On; adjustable for gain, size and location of sensing area
S/N Ratio	Over 50dB (AGC off)
Video Output	BNC 1.0V p-p 75Ω; video test point inside dome, cable supplied
Gamma Correction	0.45
Lens Type	2 Megapixel Aspheric Varifocal DC Iris 2.8~12mm F=1.6
Lens Positioning	3-axis flexible positioning for wall or ceiling mounting
Back Light Compensation	OFF/BLC/HLC Selectable
Auto Gain Control	Off/Low/Middle/High
Electronic Shutter	Auto; or 1/60, FLK, 1/250, 1/500, 1/1000, 1/2000, 1/4000, 1/5000, 1/10000, 1/100000
White Balance	ATW/AWB/AWC->SET/Anti-Color Roll/Manual
Sync. Mode	Internal (plus Anti-Color Roll White Balance option above)
Day & Night	Auto True D/N with motorized ICR; controlled by photo sensor. Choose Auto, color or B/W
OSD Menu	Multiple functions using 3-axis joystick
OSD Languages	English, Spanish, Portuguese, German, Russian, Japanese, Chinese, French
2D-DNR	On/Off (Level Adjustable)
Digital Wide Dynamic Range	On/Off (Level Adjustable)
Mirror	Off/On
Motion Detection	Off/On for 4 selectable zones (On screen indication)
Privacy Mask	Off/On for 8 selectable zones
Lens Shading Correction	Off/On with adjustable level and center
Other OSD Functions	Camera Title with position, Font Color, Image Contrast/Sharpness, CRT/LCD display optimization, Negative Image, DPC (Dead Pixel Compensation)
Power Source	12VDC/24VAC
Power Consumption	12VDC:420mA max. / 24VAC:4.8W max.
Operating Temperature	-40°F~140°F ; -40°C~60°C
Environmental	IP66 weather resistant
Mechanical	Vandal proof dome; back box accepts 3/4" conduit fittings and hole pattern matches various standard electrical boxes; remove back box for flush mounting
Dimensions	Surface: 6.14"/156mm dia. x 5.1"/129.5mm high Flush: 5.63"/143mm dia. X 3.11"/79mm visible & .98"/25mm behind surface
Weight	1.2 pounds flush mounted; 2.8 pounds with surface mount conduit compatible back box
Certifications	CE, FCC, RoHS
Environmental	IP66 weather resistant

www.ktncusa.com

KPC-VNNS102NUV: 2.8-12mm