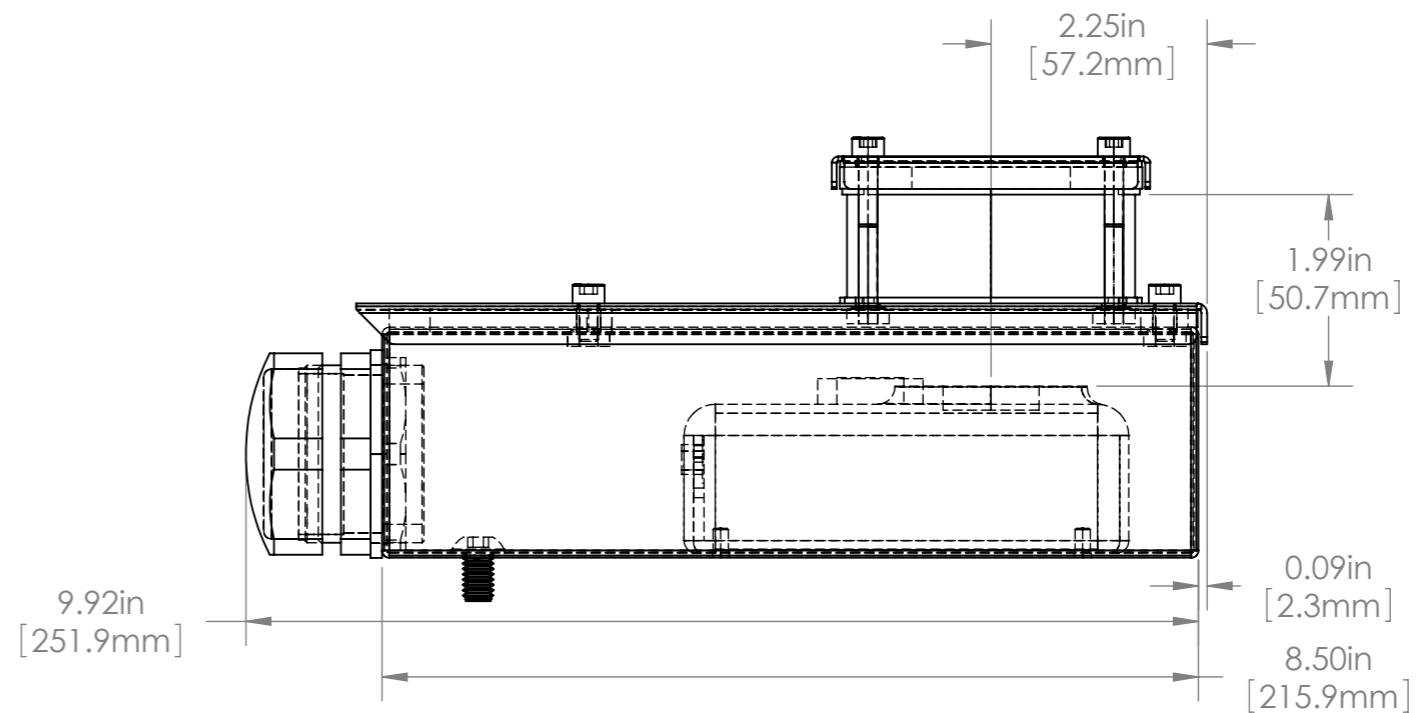
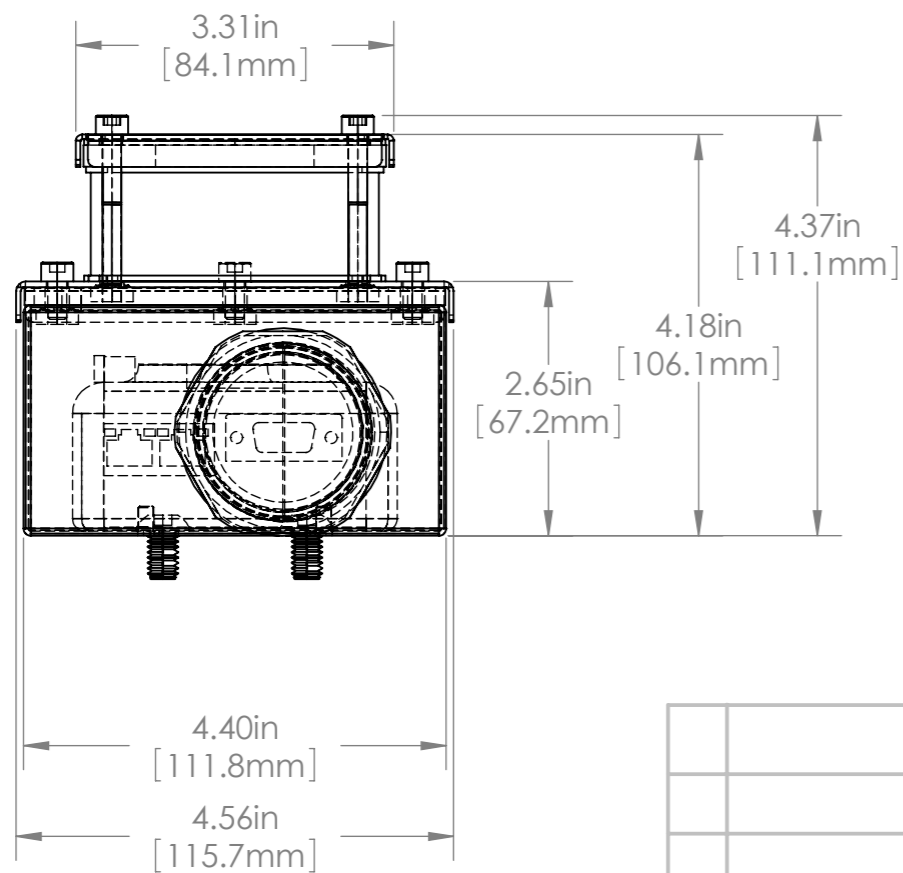
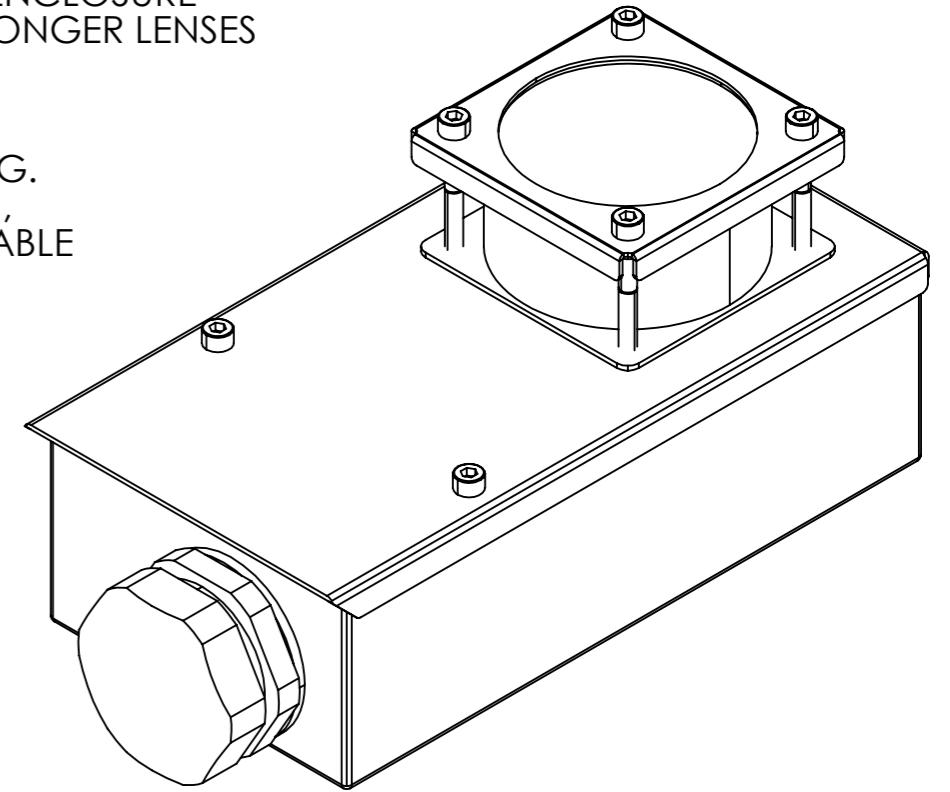
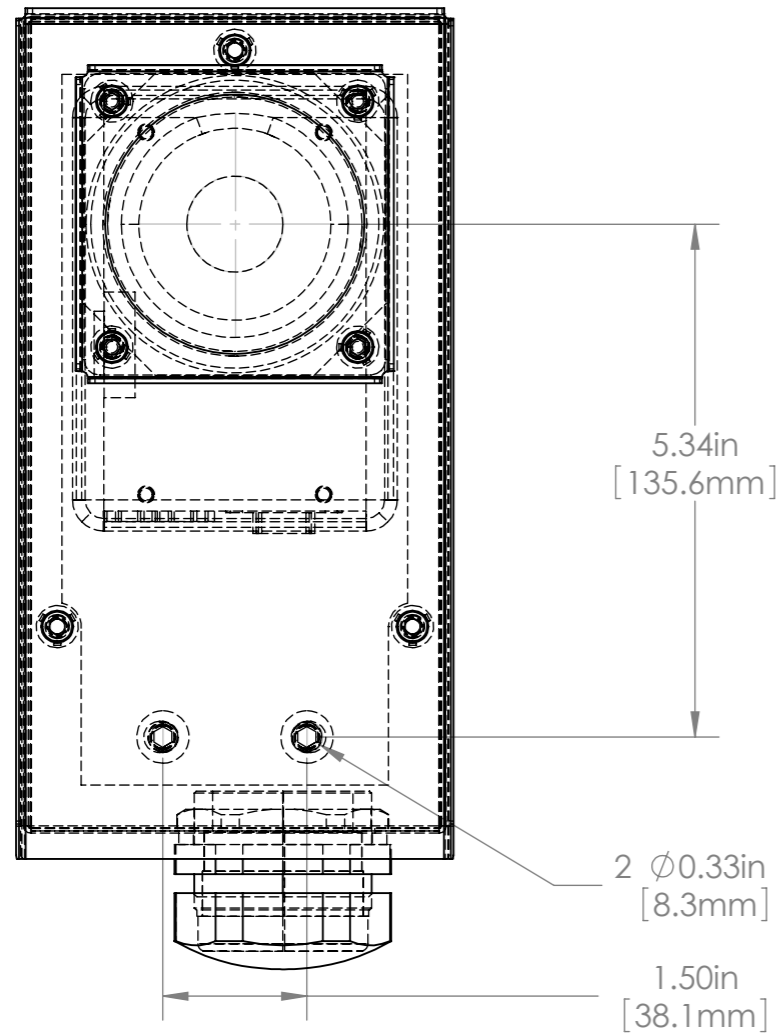
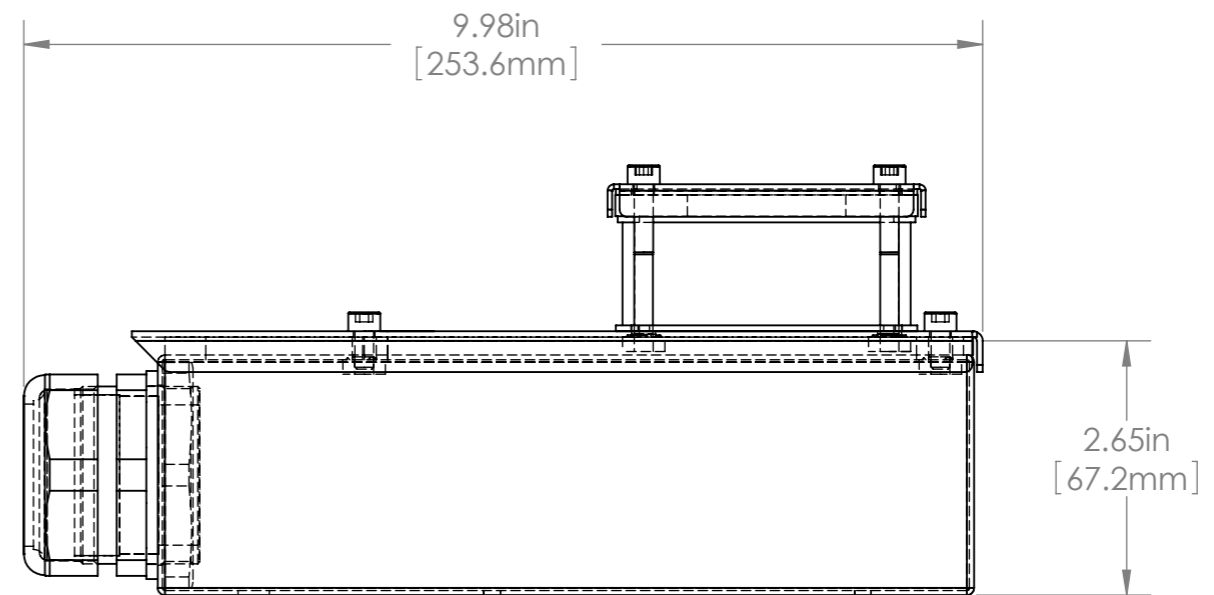
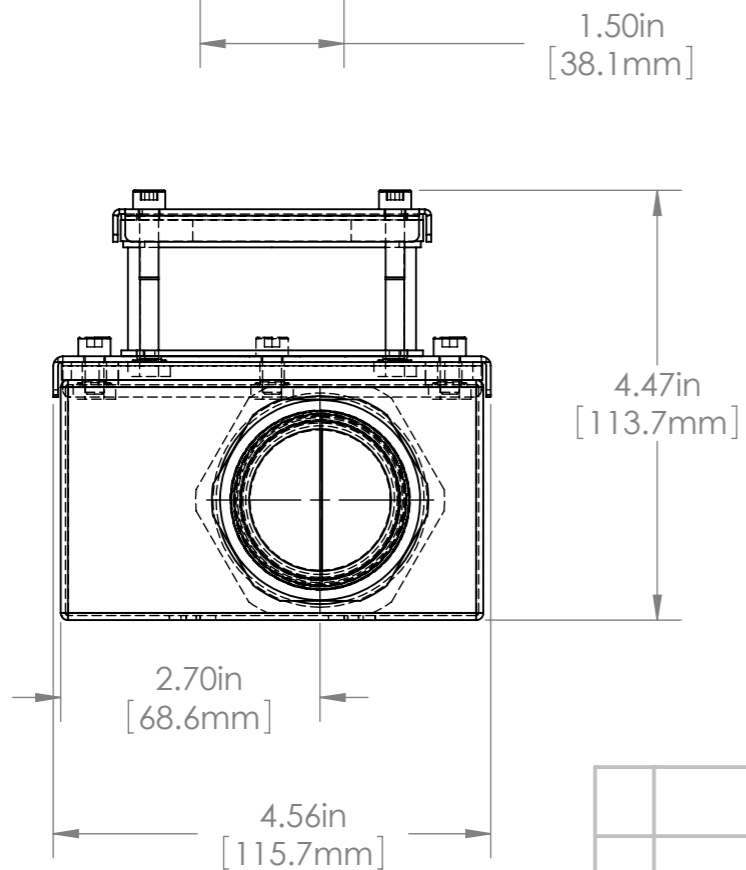
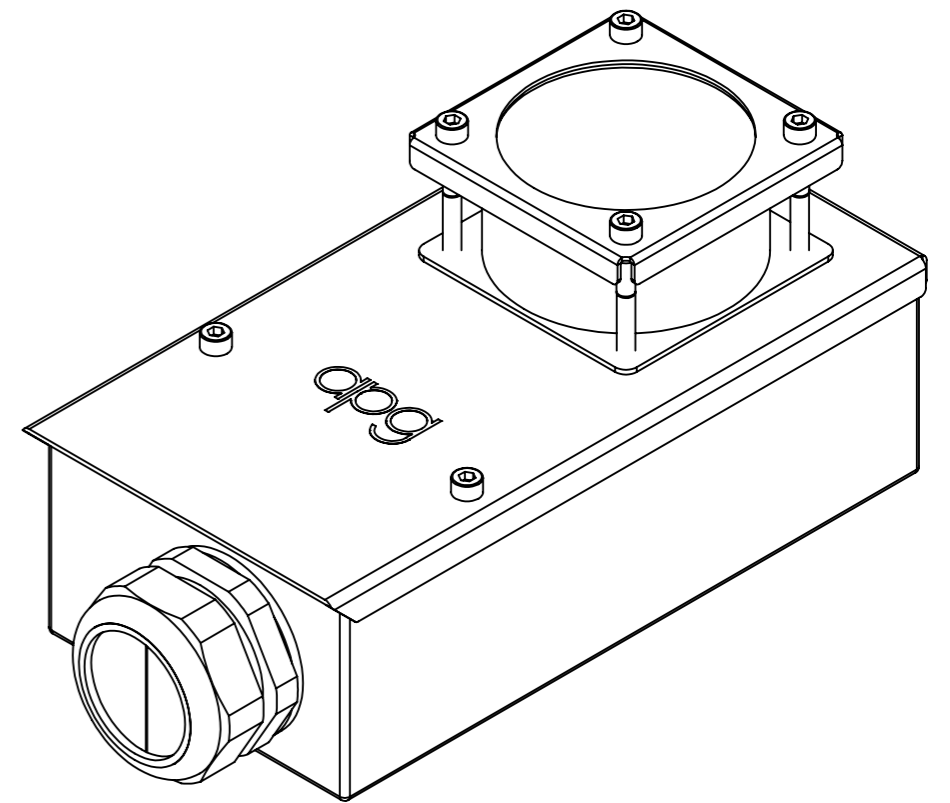
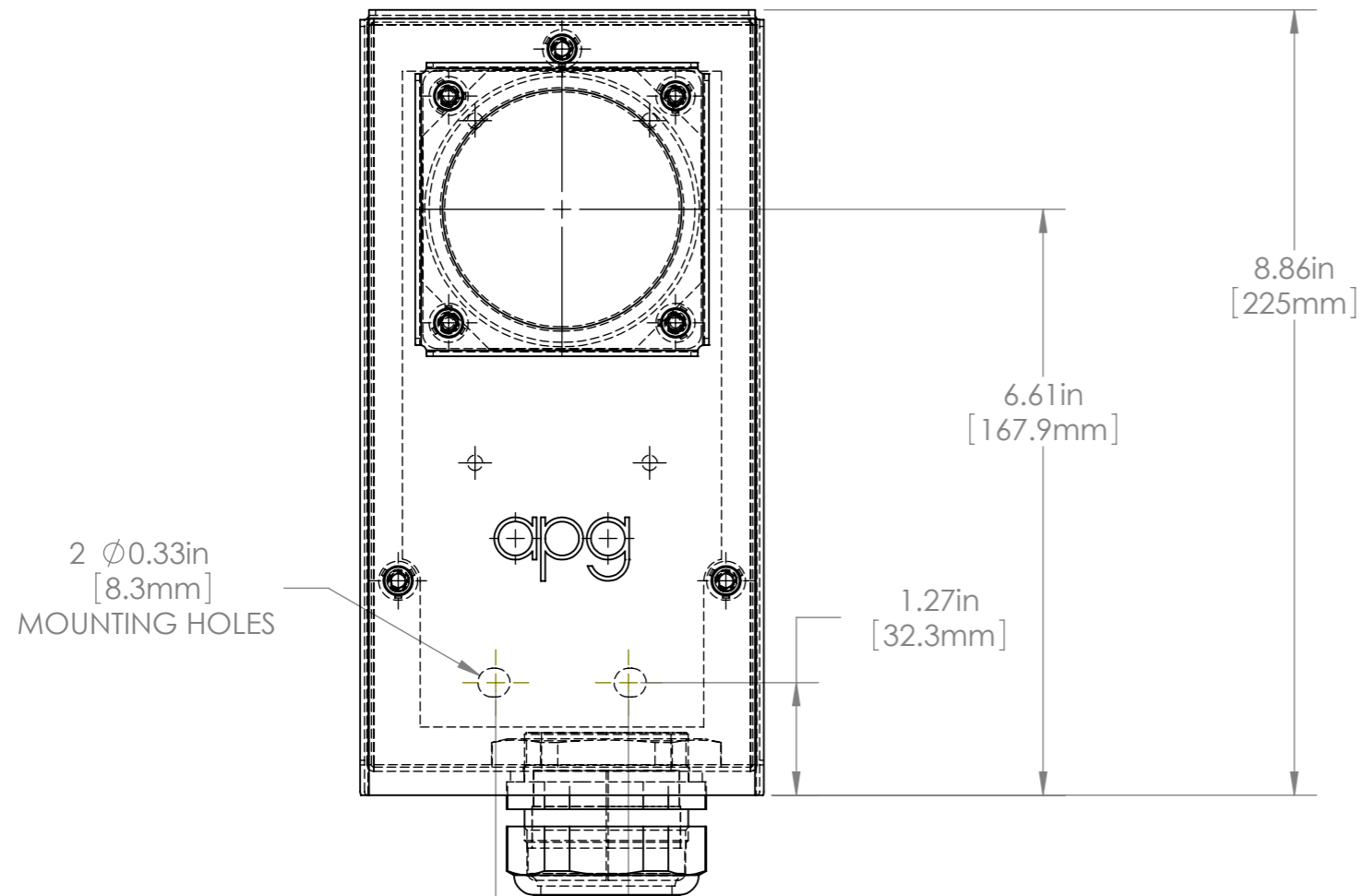


1.8in (46mm) LENS LENGTH AVAILABLE IN STANDARD ENCLOSURE
 EXTENDER KITS ARE AVAILABLE TO ACCOMMODATE LONGER LENSES

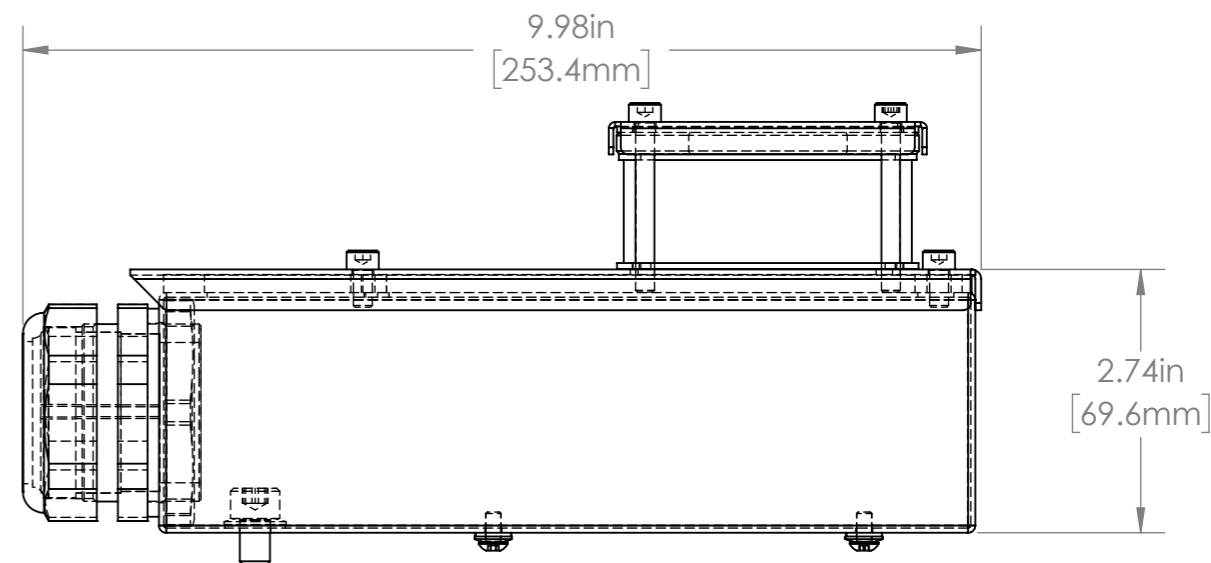
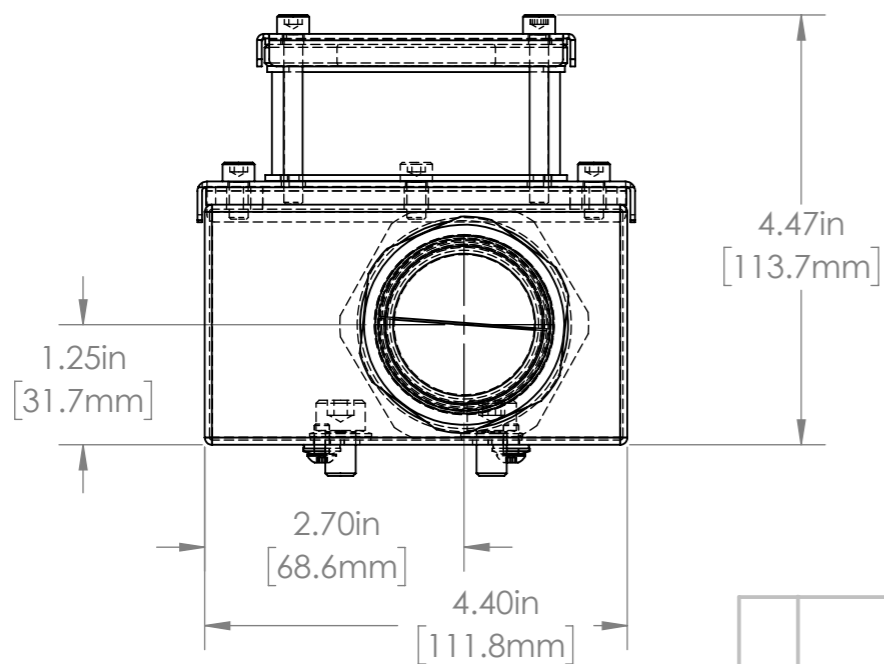
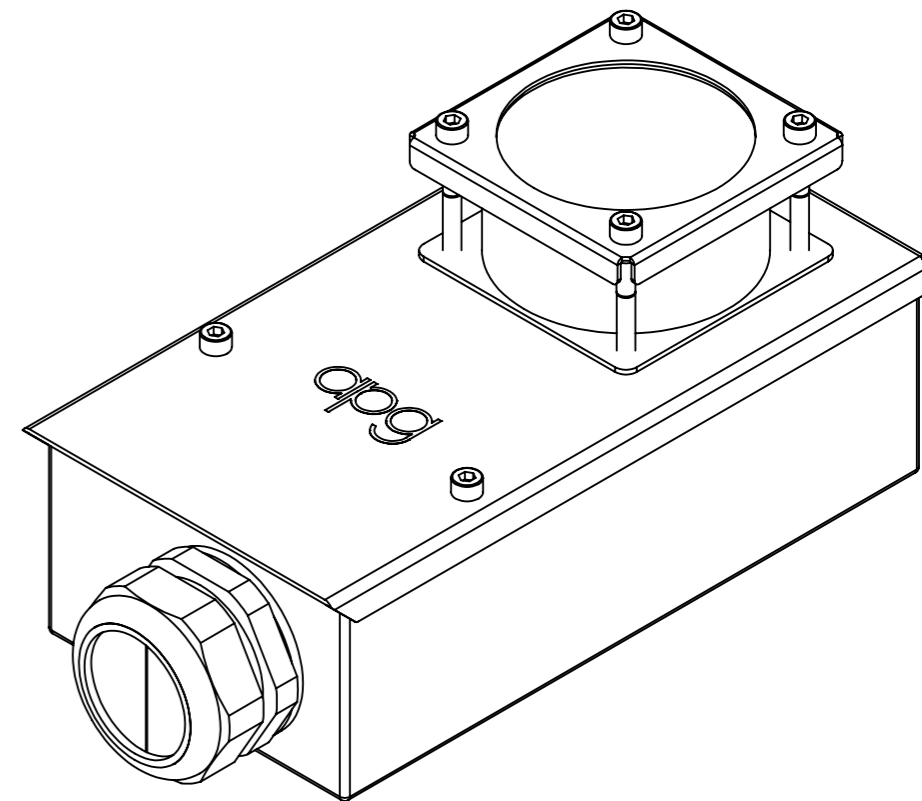
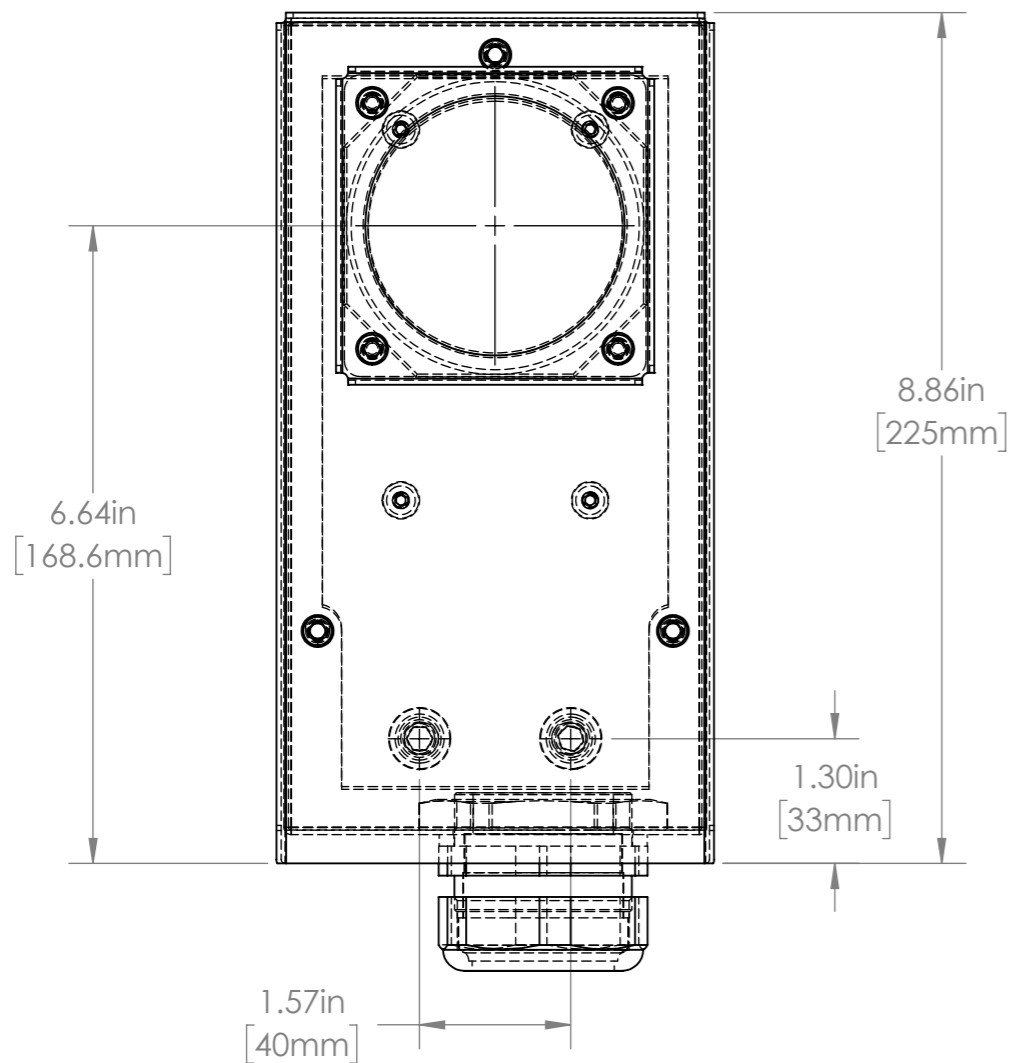
STANDARD LENS TUBE IS 1.06in (27mm) LONG.
 1.5in (38mm), 1.97in (50mm), 2.44in (62mm),
 3.5in (89mm), & 4.57in (116mm) ARE AVAILABLE



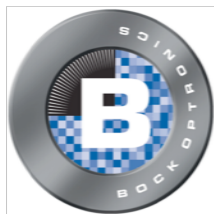
				UNLESS OTHERWISE SPECIFIED: DIMENSIONS ARE IN INCHES SURFACE FINISH: TOLERANCES: .000= +/- 0.005" .00= +/- 0.010"		FINISH: DEBUR AND BREAK SHARP EDGES		Allison Park Group, Inc. (APG) 4055 Alpha Drive Allison Park, PA 15101 USA		DO NOT SCALE DRAWING		REVISION	
				LINEAR:				Phone +1 (412) 487-8211 Fax +1 (412) 486-3157		This document is the property of APG and is considered company confidential. The information in this document is the property of APG and may not be used, reproduced, or distributed in whole or in part without the prior written permission of APG			
				DRAWN		NAME		SIGNATURE		DATE		TITLE:	
				SCHUBERT						7/20/2010		L15-AA ENCLOSURE DIMS	
				CHK'D									
				APPVD									
				MFG									
				Q.A									
				NOTES:									
				MATERIAL:				304 Stainless Steel		DWG NO.		L15-AA (SS)	
				WEIGHT:						SCALE: 1:5		A3	
NO. CHANGE				DATE INIT.				SHEET 1 OF 1					



				UNLESS OTHERWISE SPECIFIED: DIMENSIONS ARE IN INCHES SURFACE FINISH: TOLERANCES: .000= +/- 0.005" .00= +/- 0.010"		FINISH: DEBUR AND BREAK SHARP EDGES		Allison Park Group, Inc. (APG) 4055 Alpha Drive Allison Park, PA 15101 USA		DO NOT SCALE DRAWING		REVISION	
				LINEAR:				Phone +1 (412) 487-8211 Fax +1 (412) 486-3157		TITLE: L15-BA ASSY DIMS			
				DRAWN SCHUBERT		SIGNATURE		DATE 8/30/2010		MATERIAL: 316 Stainless Steel		DWG NO. L15-BA	
				CHK'D						SCALE: 1:5		A3	
				APPVD						SHEET 1 OF 1			
				MFG									
				Q.A									
				NOTES:									
NO.	CHANGE	DATE	INIT.										



For more information please contact:



BOCK OPTRONICS INC.
 14 Steinway Blvd., Unit 7
 Toronto, Ontario M9W 6M6
 Tel: (416) 674-2804
sales@bockoptronics.ca
www.bockoptronics.ca

				UNLESS OTHERWISE SPECIFIED: DIMENSIONS ARE IN INCHES SURFACE FINISH: TOLERANCES: .000= +/- 0.005" .00= +/- 0.010"		FINISH: DEBUR AND BREAK SHARP EDGES		Allison Park Group, Inc. (APG) 4055 Alpha Drive Allison Park, PA 15101 USA		DO NOT SCALE DRAWING		REVISION			
				LINEAR:				Phone +1 (412) 487-8211 Fax +1 (412) 486-3157		This document is the property of APG and is considered company confidential. The information in this document is the property of APG and may not be used, reproduced, or distributed in whole or in part without the prior written permission of APG. TITLE: L15-BB (Cognex 5000 Camera enclosure - acrylic viewport (27mm tube)) DIMS					
				DRAWN		NAME		SIGNATURE				DATE			
				CHK'D		AW						6/22/2018			
				APPV'D											
				MFG											
				Q.A											
				NOTES:						MATERIAL: 316 Stainless Steel		DWG NO. L15-BB			
NO.				CHANGE				DATE				INIT.			
												WEIGHT:			
												SCALE: 1:5			
												SHEET 1 OF 1			