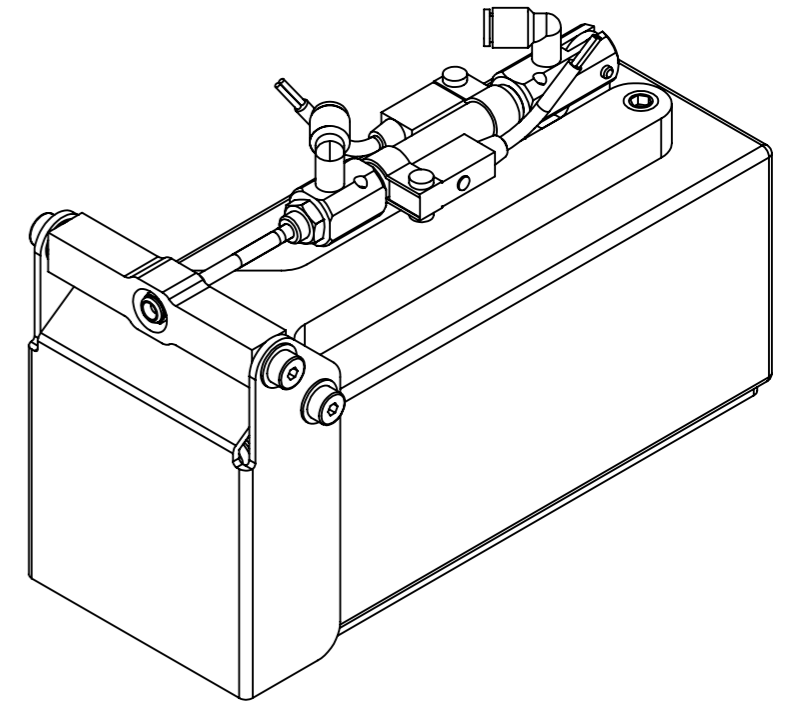
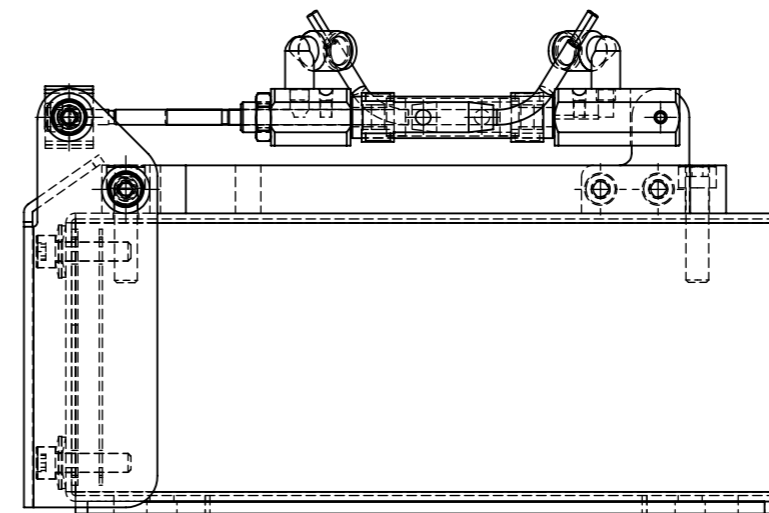
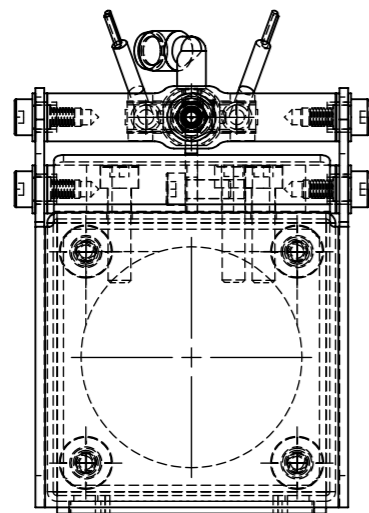


MOUNTING HOLE PATTERN

Ø 6.350mm
[.25in]
3x MOUNTING HOLES

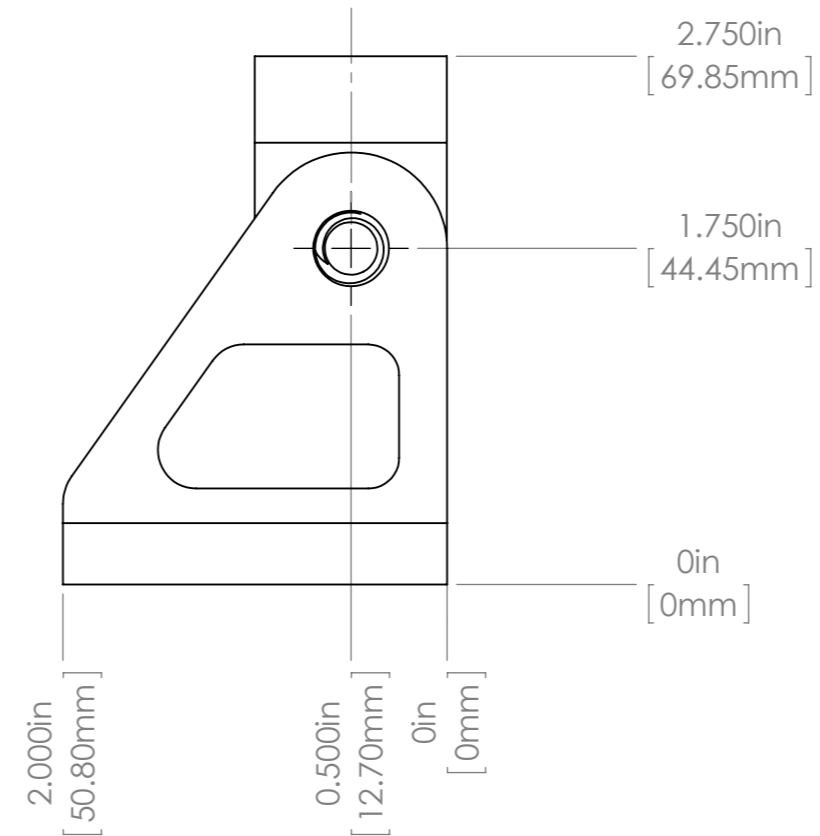
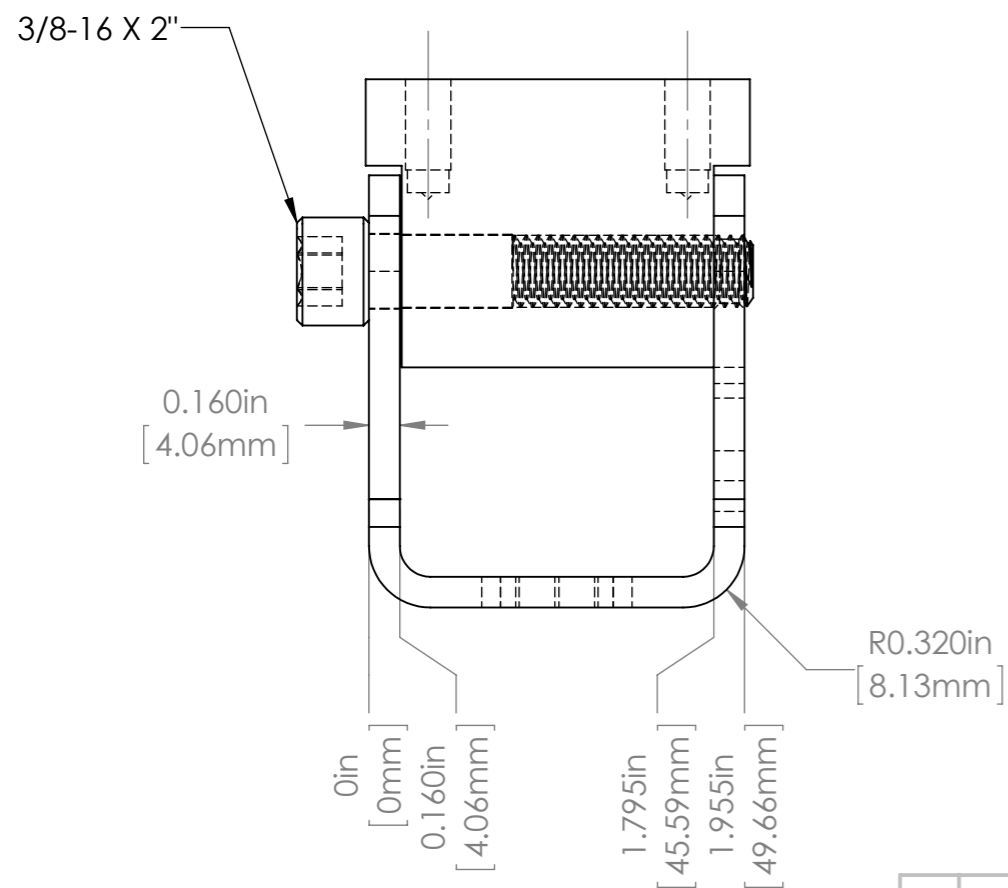
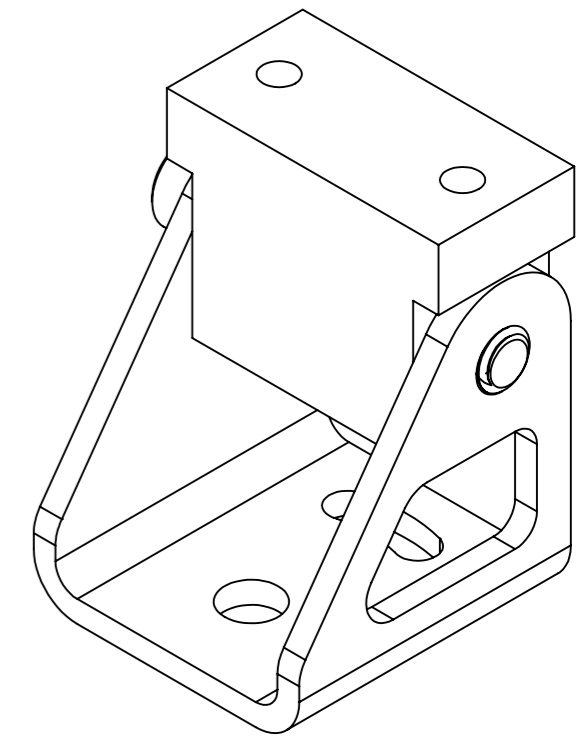
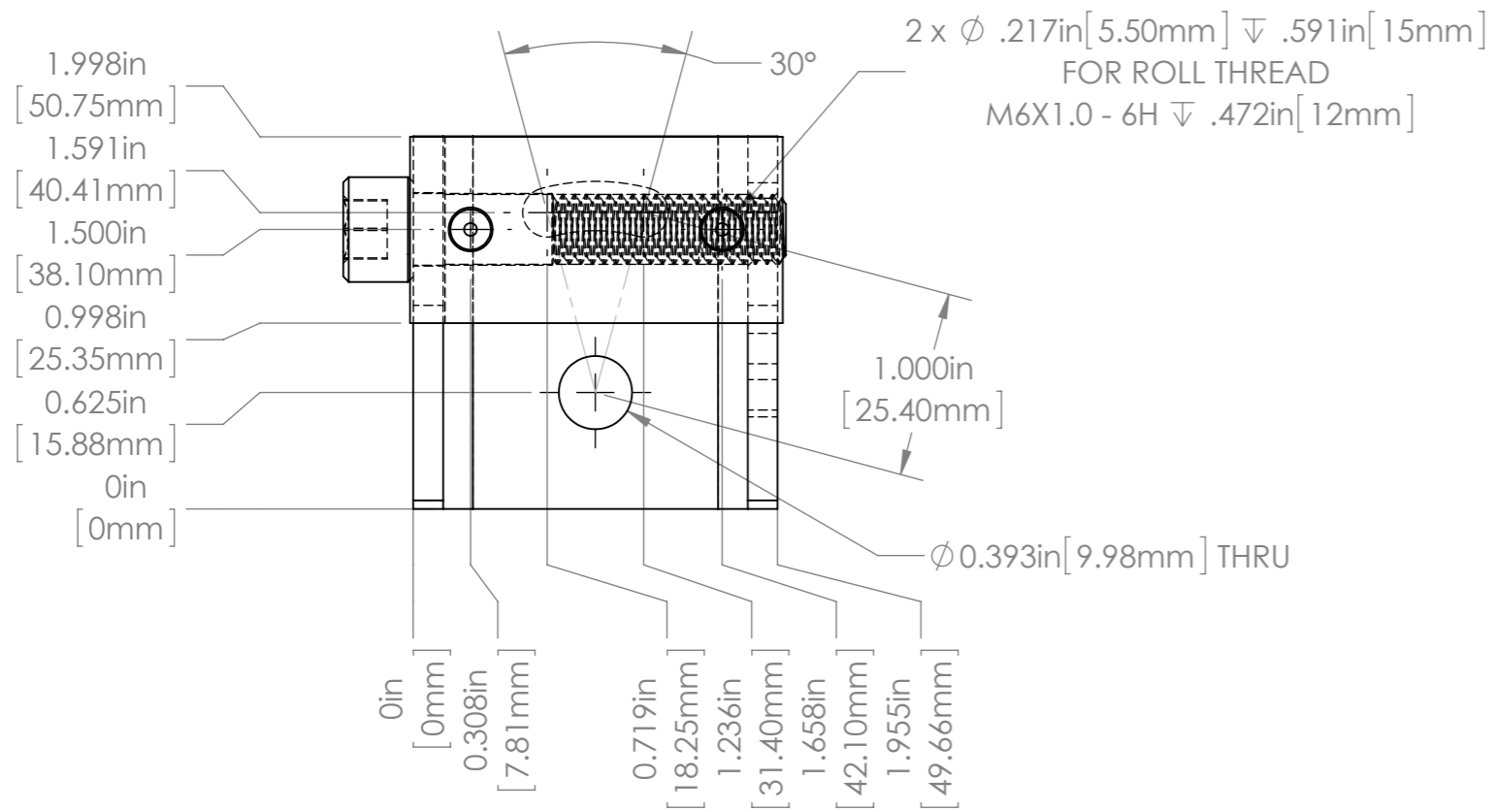


For more information please contact:

BOCK OPTRONICS INC.
14 Steinway Blvd., Unit 7
Toronto, Ontario M9W 6M6

Tel: (416) 674-2804
sales@bockoptronics.ca
www.bockoptronics.ca

				UNLESS OTHERWISE SPECIFIED: DIMENSIONS ARE IN INCHES SURFACE FINISH: TOLERANCES: .000= +/- 0.005" .00= +/- 0.010"		FINISH: DEBUR AND BREAK SHARP EDGES		Allison Park Group, Inc. (APG) 4055 Alpha Drive Allison Park, PA 15101 USA		DO NOT SCALE DRAWING		REVISION	
				LINEAR:				Phone +1 (412) 487-8211 Fax +1 (412) 486-3157		TITLE: SA-BA ASSY DIMS			
				DRAWN SCHUBERT		SIGNATURE		DATE 10/21/2010		DWG NO.		SA-BA	
				CHK'D						SCALE: 1:5		A3	
				APPVD						SHEET 1 OF 1			
				MFG									
				Q.A									
				NOTES:									
NO.	CHANGE	DATE	INIT.										



				UNLESS OTHERWISE SPECIFIED: DIMENSIONS ARE IN INCHES SURFACE FINISH: TOLERANCES: .000= +/- 0.005" .00= +/- 0.010"		FINISH: BURNISHED		Allison Park Group, Inc. (APG) 4055 Alpha Drive Allison Park, PA 15101 USA		DO NOT SCALE DRAWING		REVISION	
				LINEAR:		DEBUR AND BREAK SHARP EDGES		Phone +1 (412) 487-8211 Fax +1 (412) 486-3157		This document is the property of APG and is considered company confidential. The information in this document is the property of APG and may not be used, reproduced, or distributed in whole or in part without the prior written permission of APG.			
				DRAWN SCHUBERT		SIGNATURE		DATE 3/12/2013		TITLE: 30D-PT1 MOUNT ASSEMBLY			
				CHK'D						DWG NO. 30D-PT1			
				APPVD						A3			
				MFG						SCALE: 1:2			
				Q.A						SHEET 1 OF 1			
				NOTES:						WEIGHT:			
				NO. CHANGE		DATE		INIT.		MATERIAL: 304 STAINLESS STEEL FOOT 6061 T6 ALUMINUM ADAPTOR			

4

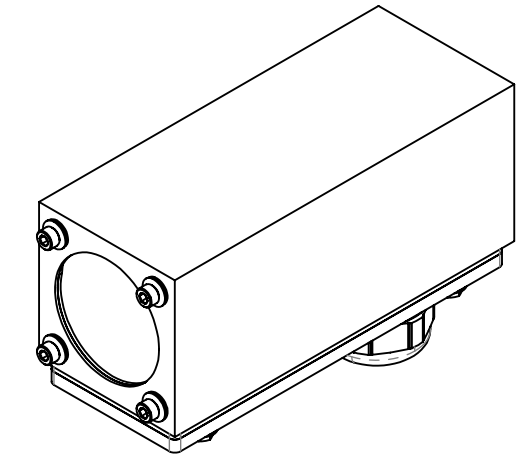
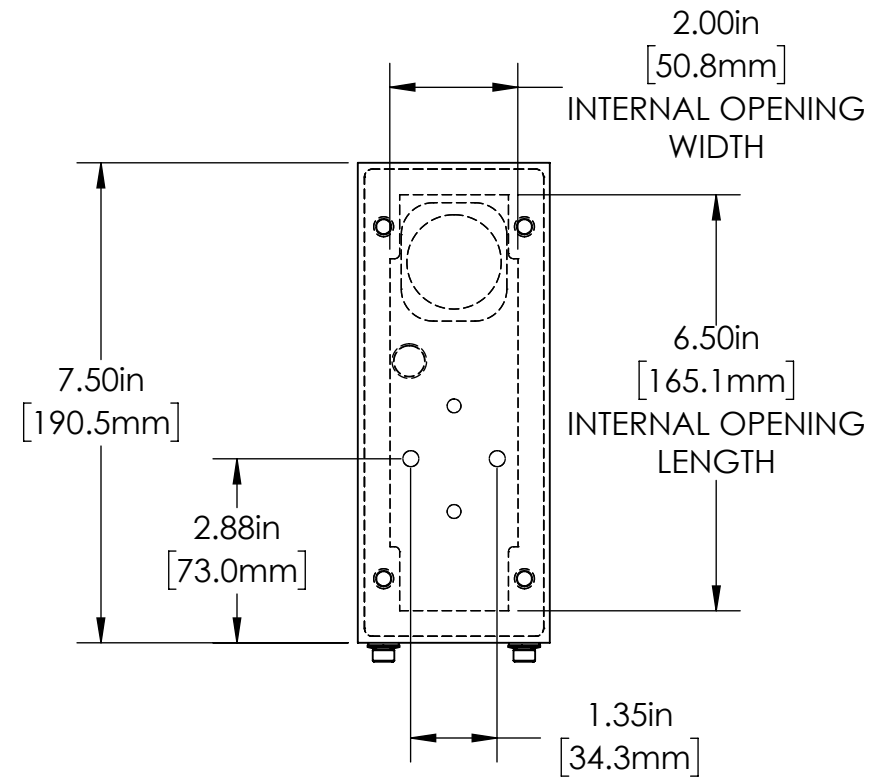
3

2

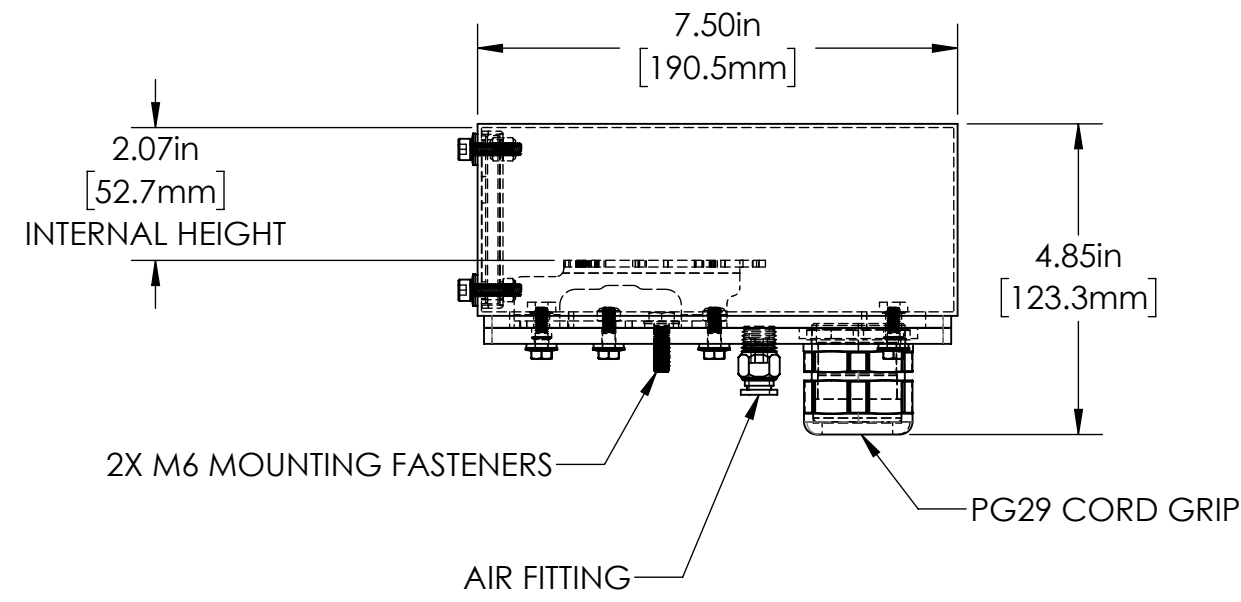
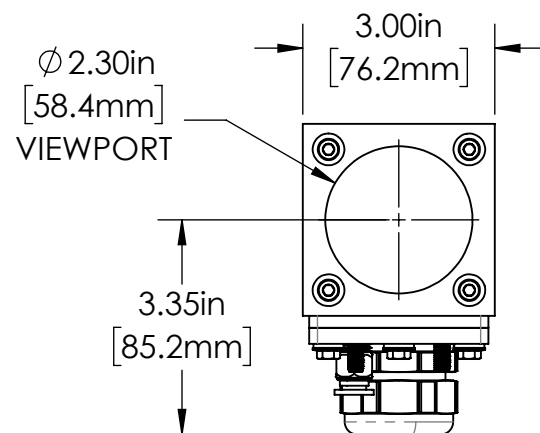
1

REVISIONS				
ZONE	REV.	DESCRIPTION	DATE	APPROVED
	A	RELEASED FOR PRODUCTION	10/27/2020	DMM

B



B



A

30D SERIES PROPERTIES TABLE

ENVIRONMENT RATING	IP64*	
	(*RATING MAY CHANGE IF INSTALLER MILLS CABLE GLAND OUTSIDE OF TOLERANCE)	
COMPONENT	MATERIAL	FINISH
BODY	304 SS	BURNISHED
BASE	6061 ALUMINUM	CLEAR HARDCOAT ANODIZED
VIEWPORT	ACRYLIC	ABR2
GASKET	EPDM FOAM	NONE
ARM/ADAPTOR	6061 ALUMINUM	CLEAR HARDCOAT ANODIZE
HARDWARE	316 SS - EXTERNAL, 18-8 SS - INTERNAL	NONE

A

TOLERANCES UNLESS OTHERWISE SPECIFIED

MACHINING		SHEET METAL	
X.X	0.0250"	HOLE TO HOLE (SAME SURFACE)	
X.XX	0.0100"	X.X	0.030"
X.XXX	0.0050"	X.XX	0.010"
X.XXXX	0.0005"	X.XXX	0.005"
ANGULAR	0.5°	X.XXX	0.015"
DEBURR ALL		HOLE TO FOLDED EDGE	
		X.X	0.035"
		X.XX	0.025"
		X.XXX	0.015"
		FOLD TO FOLD	
		X.X	0.045"
		X.XX	0.035"
		X.XXX	0.020"
		ANGULAR 1.0°	

ALL WEIGHTS ARE IN POUNDS

THIS PRINT IS THE PROPERTY OF ALLISON PARK GROUP. THE INFORMATION CONTAINED HEREIN IS CONFIDENTIAL. IT IS NOT TRANSFERABLE. IT IS FURNISHED WITH THE CLEAR UNDERSTANDING THAT IT IS NOT TO BE TRACED, REPRODUCED OR USED IN ANY PROCESS OF MANUFACTURING WITHOUT WRITTEN PERMISSION FROM THE OWNER AND IS RETURNABLE UPON DEMAND. ANY INFRINGEMENT UPON THE PATENT RIGHTS SHOWN HEREIN, WHETHER IN PART OR WHOLE, WILL BE PROSECUTED.

AS PART OF OUR POLICY OF CONTINUING DEVELOPMENT, ALLISON PARK GROUP RESERVES THE RIGHT TO ALTER SPECIFICATIONS WITHOUT PRIOR NOTICE.

apg Allison Park Group, Inc (APG)
4055 Alpha Drive
Allison Park, PA 15101 USA
Phone +1 (412) 487-8211
apgvision.com

DESCRIPTION:
30D 7.5IN GLASS UNIV. ARM R1.5 AIR CURTAIN PG29

MATERIAL: **SEE BOM**

FINISH: **SEE BOM**

DRAWN BY: DMM	DATE: 10/27/2020	SCALE: 1:3	SHT-SIZE: B	APPROX. WEIGHT
CHECKED BY: DMM	DATE: 10/27/2020	PART NUMBER: 30D-FT		REVISION: A

Sheet1 of 1

4

3

2

1

4

3

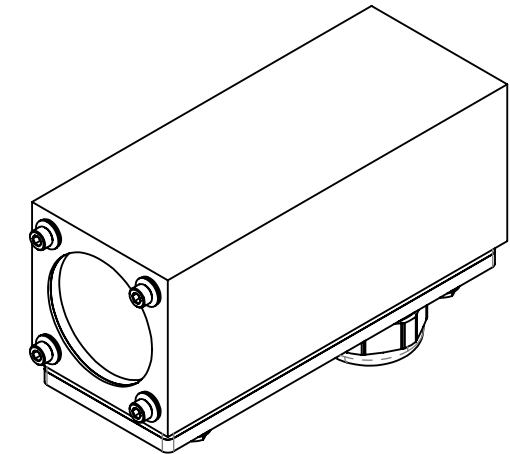
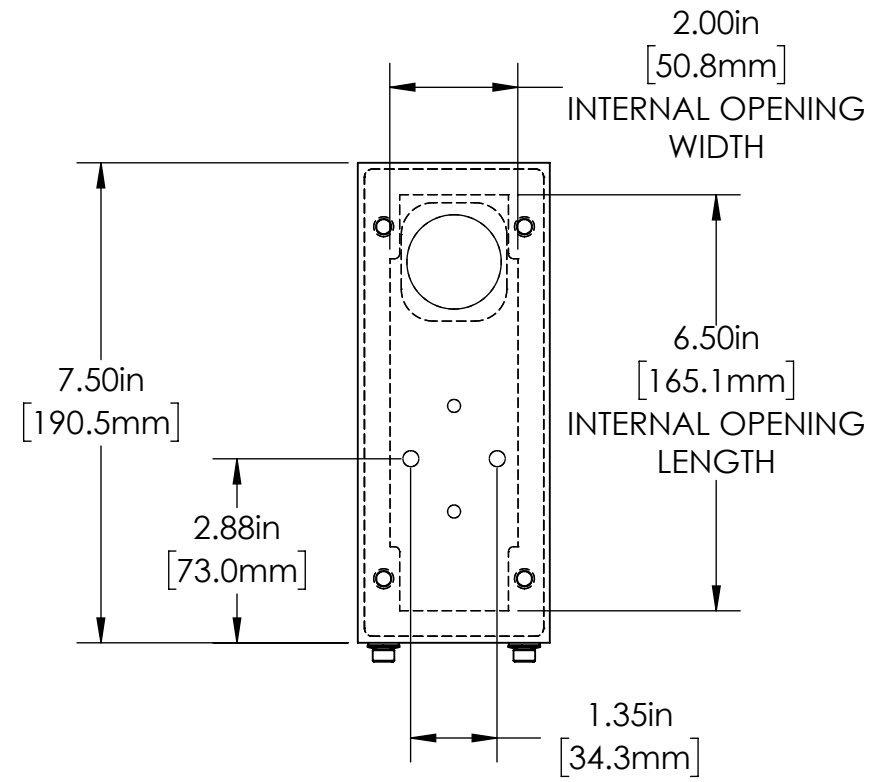
2

1

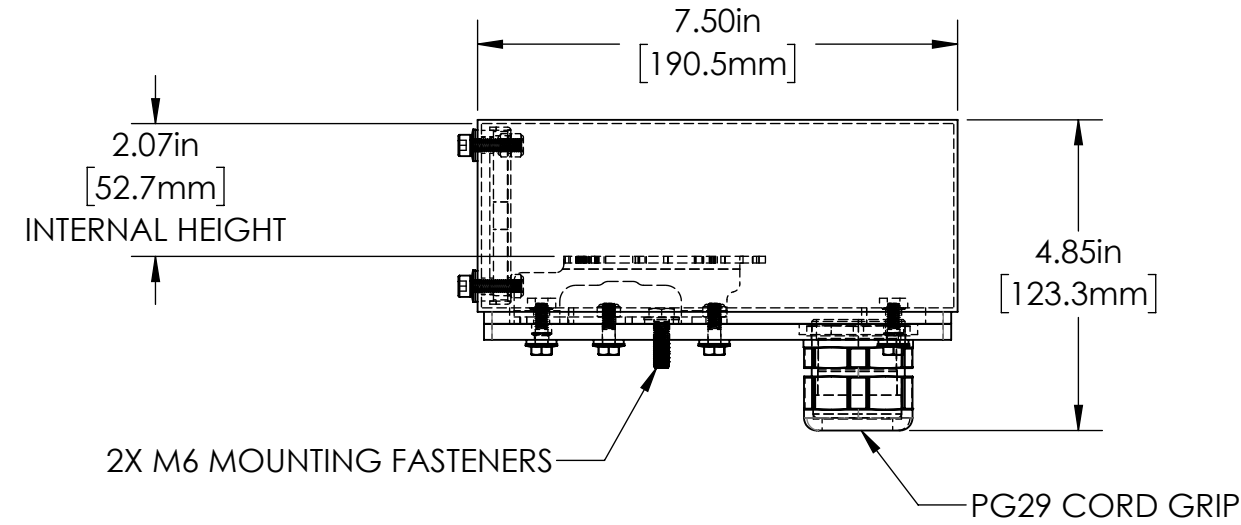
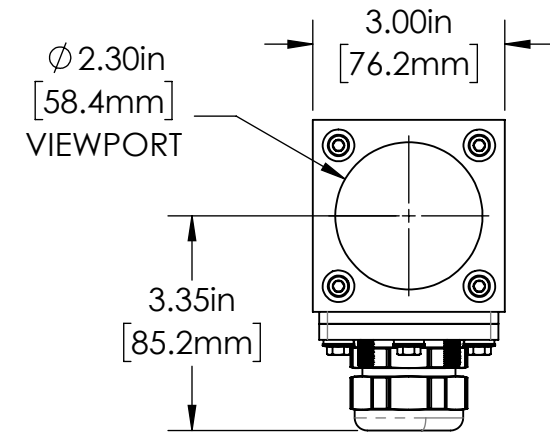
REVISIONS

ZONE	REV.	DESCRIPTION	DATE	APPROVED
	A	RELEASED FOR PRODUCTION	10/27/2020	DMM

B



B



30D SERIES PROPERTIES TABLE

ENVIRONMENT RATING	IP64*	
	(*RATING MAY CHANGE IF INSTALLER MILLS CABLE GLAND OUTSIDE OF TOLERANCE)	
COMPONENT	MATERIAL	FINISH
BODY	304 SS	BURNISHED
BASE	6061 ALUMINUM	CLEAR HARDCOAT ANODIZED
VIEWPORT	ACRYLIC	ABR2
GASKET	EPDM FOAM	NONE
ARM/ADAPTOR	6061 ALUMINUM	CLEAR HARDCOAT ANODIZE
HARDWARE	316 SS - EXTERNAL, 18-8 SS - INTERNAL	NONE

4

3

2

1

A

A

TOLERANCES UNLESS OTHERWISE SPECIFIED

MACHINING		SHEET METAL	
X.X	0.0250"	HOLE TO HOLE (SAME SURFACE)	
X.XX	0.0100"	X.X	0.030"
X.XXX	0.0050"	X.XX	0.010"
X.XXXX	0.0005"	X.XXX	0.005"
ANGULAR	0.5°	X.XXX	0.015"
DEBURR ALL		HOLE TO FOLDED EDGE	
		X.X	0.035"
		X.XX	0.025"
		X.XXX	0.015"
		FOLD TO FOLD	
		X.X	0.045"
		X.XX	0.035"
		X.XXX	0.020"
		ANGULAR 1.0°	

ALL WEIGHTS ARE IN POUNDS

THIS PRINT IS THE PROPERTY OF ALLISON PARK GROUP. THE INFORMATION CONTAINED HEREIN IS CONFIDENTIAL. IT IS NOT TRANSFERABLE. IT IS FURNISHED WITH THE CLEAR UNDERSTANDING THAT IT IS NOT TO BE TRACED, REPRODUCED OR USED IN ANY PROCESS OF MANUFACTURING WITHOUT WRITTEN PERMISSION FROM THE OWNER AND IS RETURNABLE UPON DEMAND. ANY INFRINGEMENT UPON THE PATENT RIGHTS SHOWN HEREIN, WHETHER IN PART OR WHOLE, WILL BE PROSECUTED.

AS PART OF OUR POLICY OF CONTINUING DEVELOPMENT, ALLISON PARK GROUP RESERVES THE RIGHT TO ALTER SPECIFICATIONS WITHOUT PRIOR NOTICE.



Allison Park Group, Inc (APG)
4055 Alpha Drive
Allison Park, PA 15101 USA
Phone +1 (412) 487-8211
apgvision.com

DESCRIPTION:
30D 7.5IN ACRYLIC UNIV. ARM R1.5 PG29

MATERIAL: **SEE BOM**

FINISH: **SEE BOM**

DRAWN BY: DMM DATE: 10/27/2020 SCALE: 1:3 SHT-SIZE: B APPROX. WEIGHT:

CHECKED BY: DMM DATE: 10/27/2020 PART NUMBER: **30D-FS** REVISION: A

Sheet 1 of 1

4

3

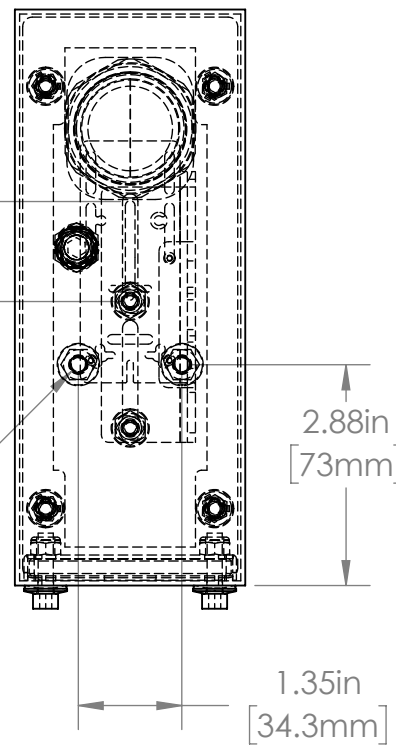
2

1

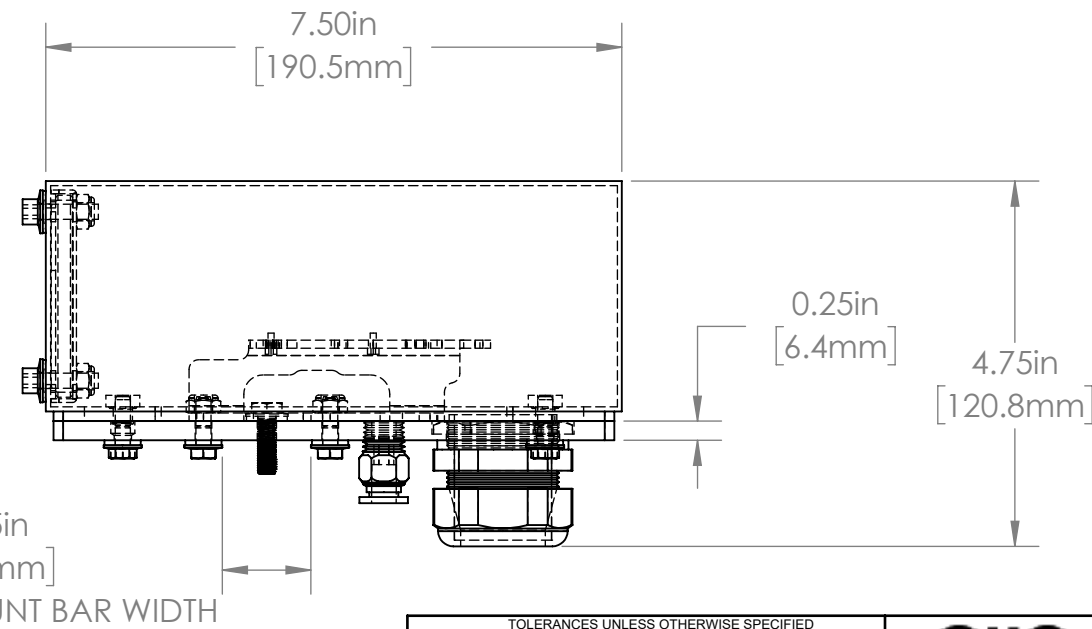
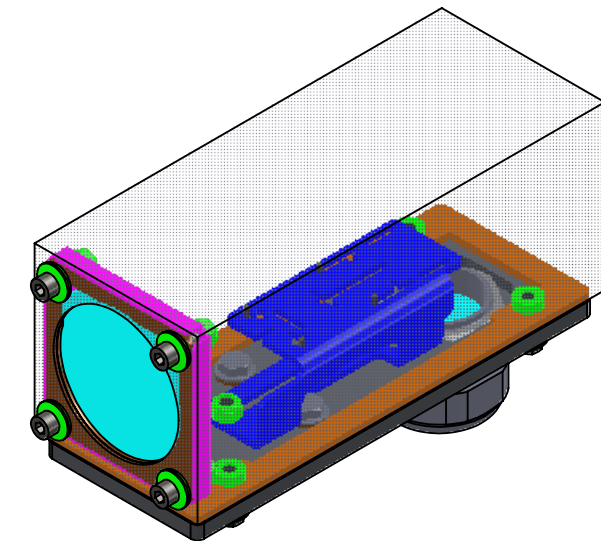
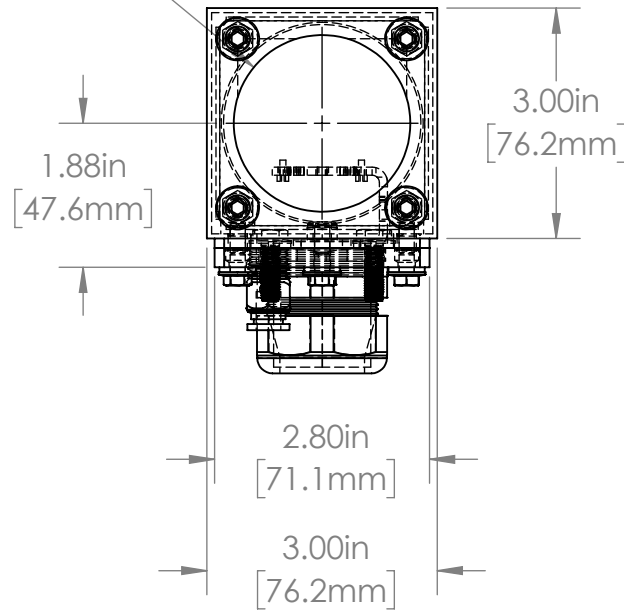
REVISIONS				
ZONE	REV.	DESCRIPTION	DATE	APPROVED
	A	RELEASED FOR PRODUCTION	12/6/2019	GD

1.30in
[33mm]
TOTAL CAMERA
POSITION ADJUSTMENT

Ø 0.25in
[6.4mm]
MOUNTING HOLES
SEALING WASHERS INCLUDED



Ø 2.30in
[58.4mm]
VIEWPORT



TOLERANCES UNLESS OTHERWISE SPECIFIED

MACHINING		SHEET METAL	
X.X	0.0250"	HOLE TO HOLE (SAME SURFACE)	
X.XX	0.0100"	X.X	0.030"
X.XXX	0.0050"	X.XX	0.010"
X.XXXX	0.0005"	X.XXX	0.005"
ANGULAR	0.5°	HOLE TO FOLDED EDGE	
DEBURR ALL		X.X	0.035"
		X.XX	0.025"
		X.XXX	0.015"
		FOLD TO FOLD	
		X.X	0.045"
		X.XX	0.035"
		X.XXX	0.020"
		ANGULAR 1.0°	

⊕ (Symbol)
ALL WEIGHTS ARE IN POUNDS

THIS PRINT IS THE PROPERTY OF ALLISON PARK GROUP. THE INFORMATION CONTAINED HEREIN IS CONFIDENTIAL. IT IS NOT TRANSFERABLE. IT IS FURNISHED WITH THE CLEAR UNDERSTANDING THAT IT IS NOT TO BE TRACED, REPRODUCED OR USED IN ANY PROCESS OF MANUFACTURING WITHOUT WRITTEN PERMISSION FROM THE OWNER AND IS RETURNABLE UPON DEMAND. ANY INFRINGEMENT UPON THE PATENT RIGHTS SHOWN HEREIN, WHETHER IN PART OR WHOLE, WILL BE PROSECUTED.

AS PART OF OUR POLICY OF CONTINUING DEVELOPMENT, ALLISON PARK GROUP RESERVES THE RIGHT TO ALTER SPECIFICATIONS WITHOUT PRIOR NOTICE.



Allison Park Group, Inc (APG)
4055 Alpha Drive
Allison Park, PA 15101 USA
Phone +1 (412) 487-8211
apgvision.com

DESCRIPTION: 30D-EN ENCLOSURE				
MATERIAL: SEE BOM				
FINISH: SEE BOM				
DRAWN BY: KENNEDY	DATE: 12/6/2019	SCALE: 1:2.5	SHT-SIZE: B	APPROX. WEIGHT
CHECKED BY: GD	DATE: 12/6/2019	PART NUMBER: 30D-EN		REVISION A

Sheet 1 of 1

4

3

2

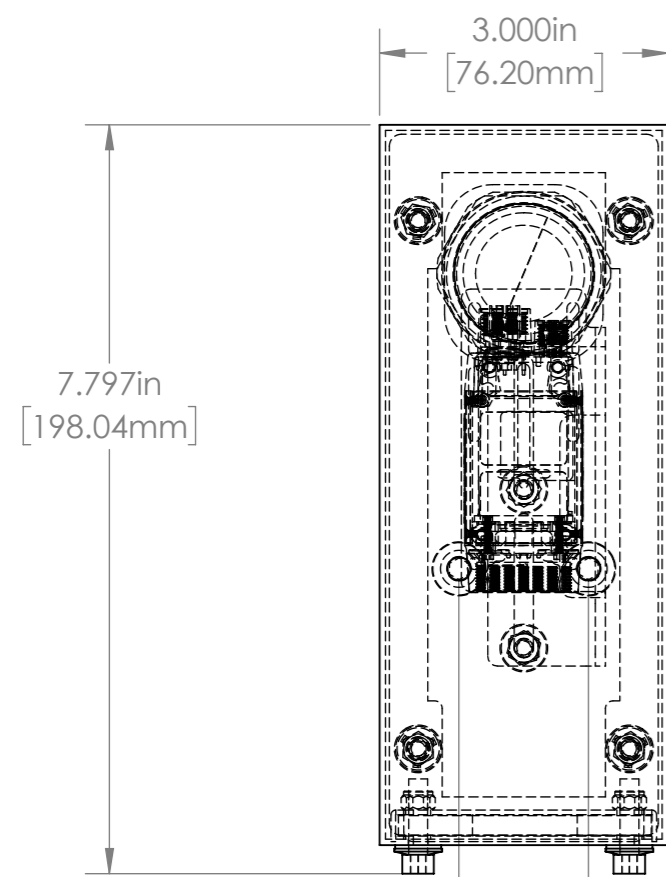
1

B

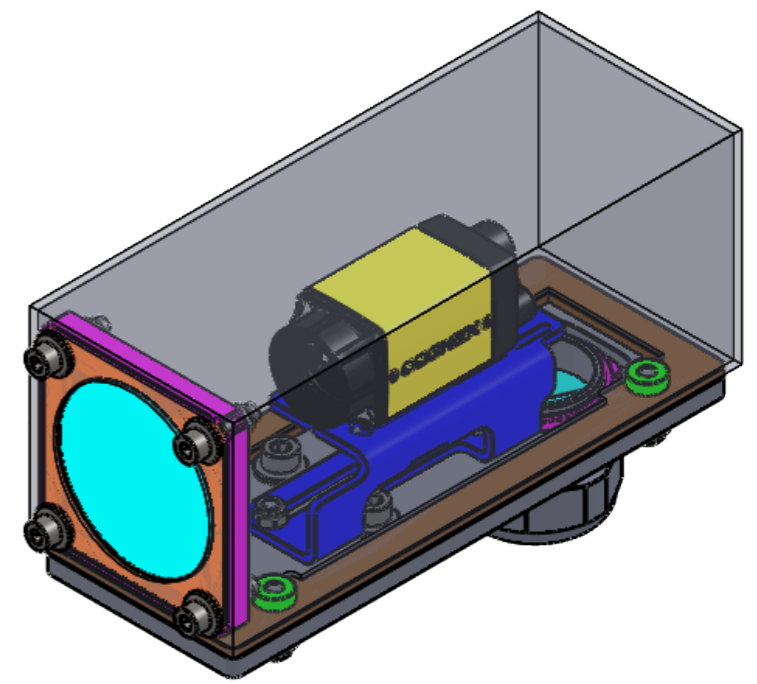
B

A

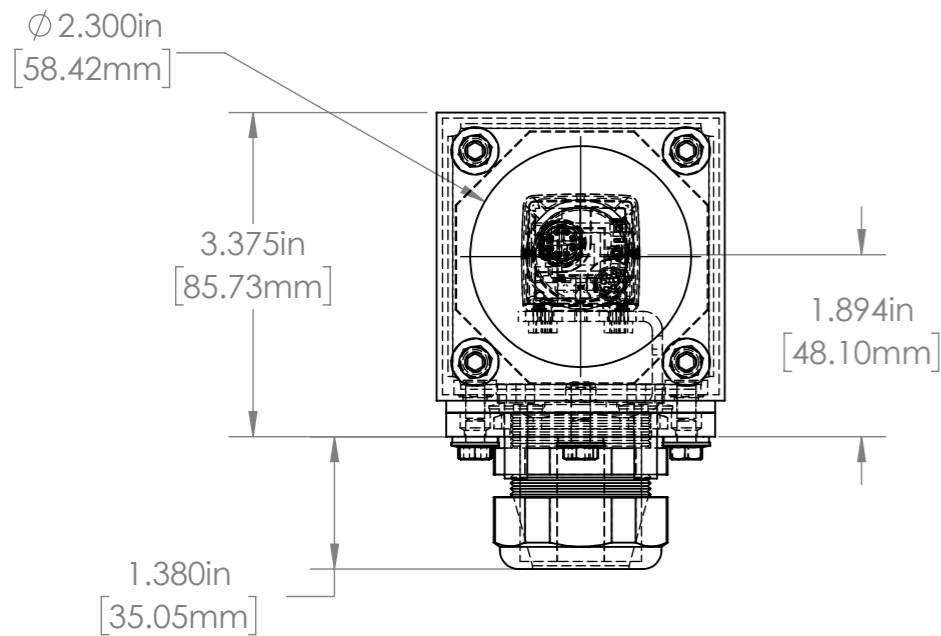
A



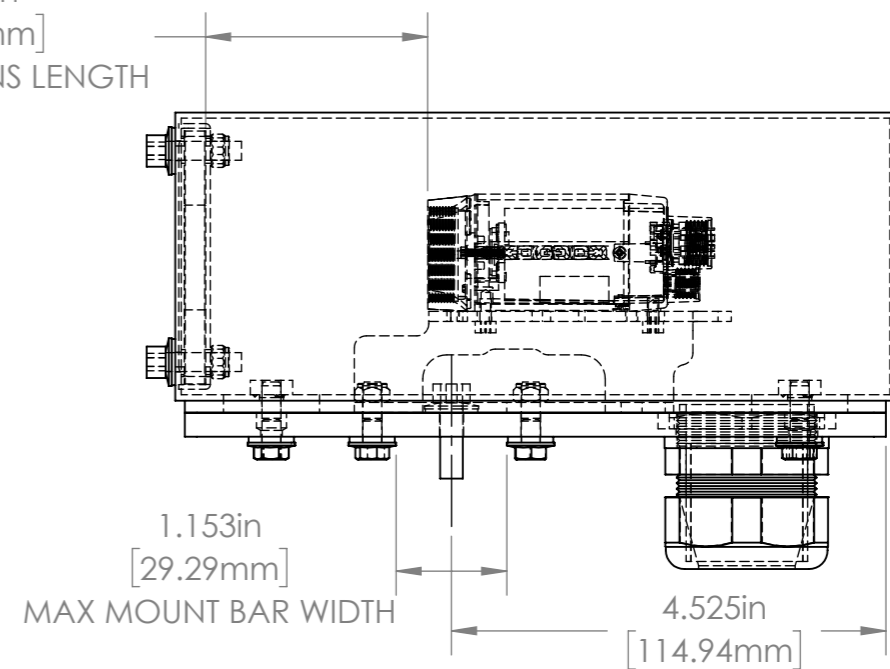
NOTE:
 MAXIMUM LENS DIAMETER 50MM
 MAXIMUM LENS LENGTH 58.5MM



1.350in [34.29mm]
 MOUNTING HOLE SPACING



2.313in [58.74mm]
 MAXIMUM LENS LENGTH



				UNLESS OTHERWISE SPECIFIED: DIMENSIONS ARE IN INCHES SURFACE FINISH: TOLERANCES: .000= +/- 0.005" .00= +/- 0.010"		FINISH: DEBUR AND BREAK SHARP EDGES		DO NOT SCALE DRAWING		REVISION	
				LINEAR:				Allison Park Group, Inc. (APG) 4055 Alpha Drive Allison Park, PA 15101 USA		This document is the property of APG and is considered company confidential. The information in this document is the property of APG and may not be used, reproduced, or distributed in whole or in part without the prior written permission of APG.	
				DRAWN SCHUBERT		DATE 12/21/2017		Phone +1 (412) 487-8211 Fax +1 (412) 486-3157		TITLE: 30D-EM IS8000 7.5 ACRYLIC SEALED ASSY DIMS	
				CHK'D				www.apgvision.com		DWG NO. 30D-EM DIMS	
				APPVD				MATERIAL: 304 SS BODY ACRYLIC VIEWPORT 40D SILICONE GASKET		SCALE: 1:2	
				MFG				WEIGHT:		SHEET 1 OF 1	
				Q.A						A3	
				NOTES:							
NO.	CHANGE	DATE	INIT.								

4

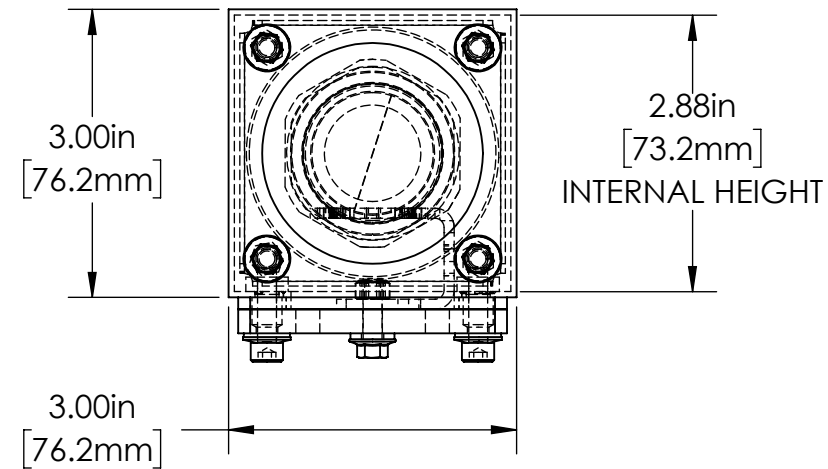
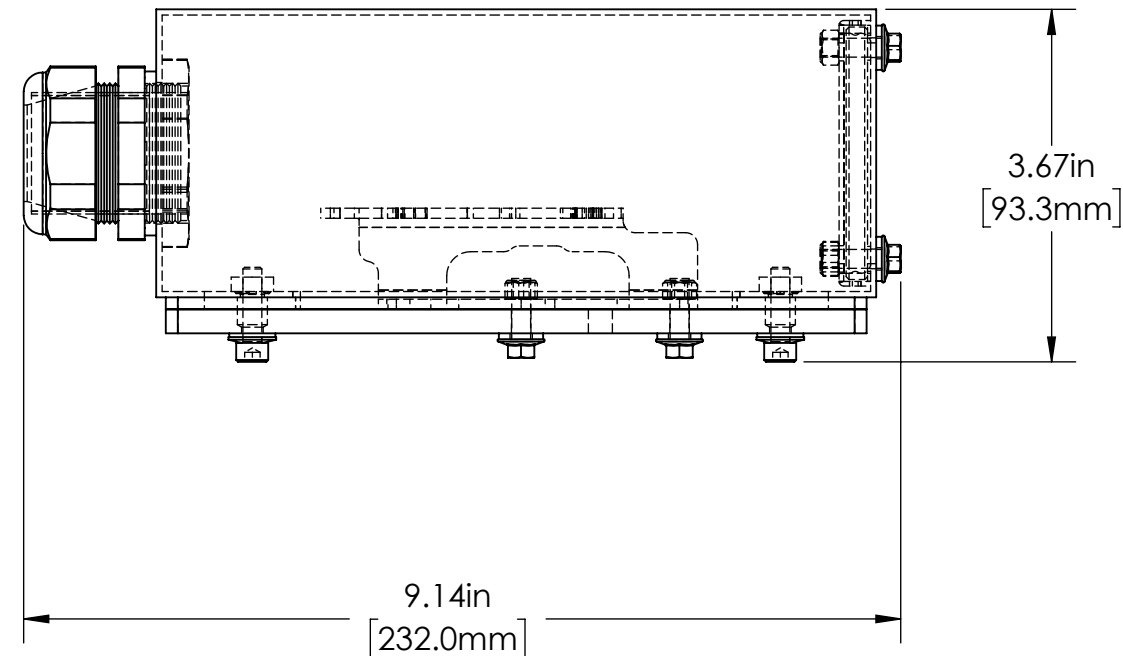
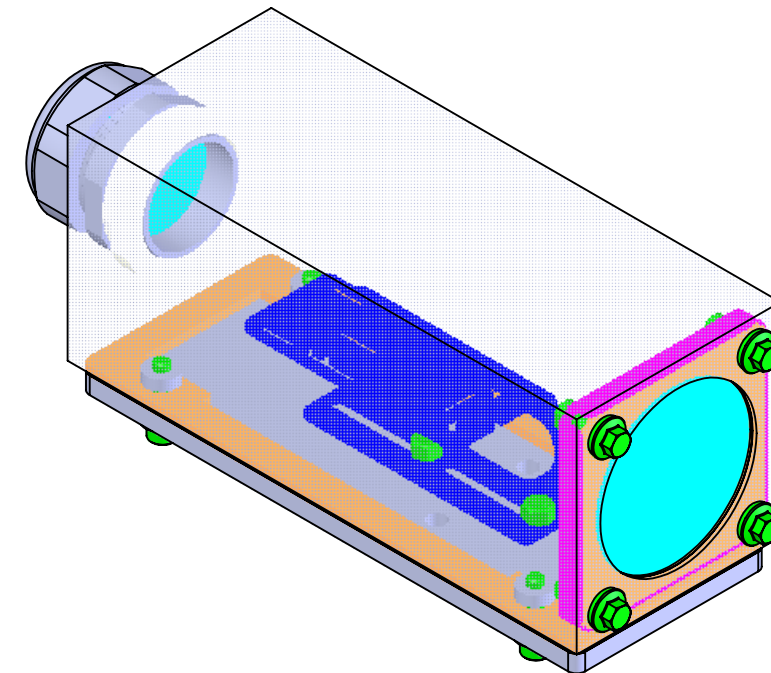
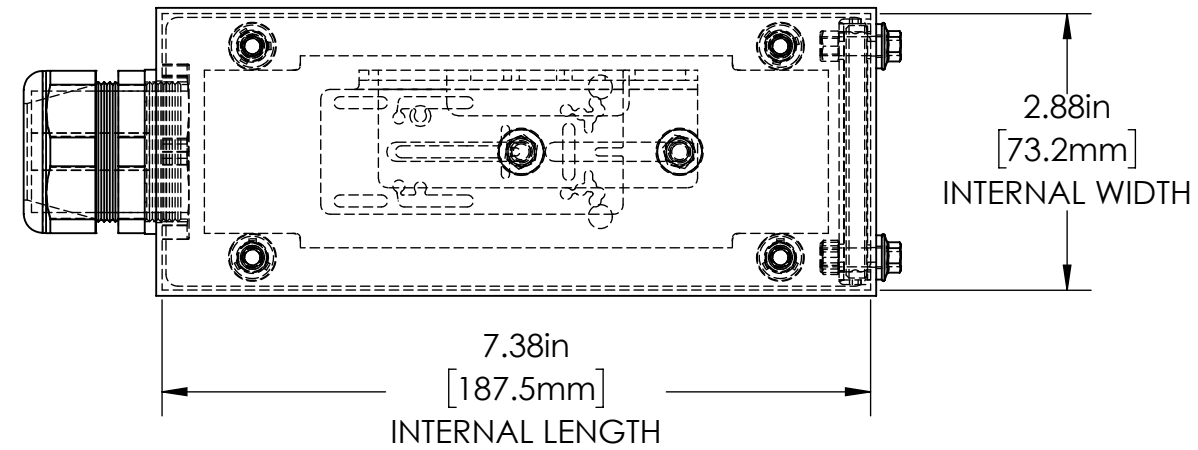
3

2

1

REVISIONS

ZONE	REV.	DESCRIPTION	DATE	APPROVED
	A		7/30/2019	



TOLERANCES UNLESS OTHERWISE SPECIFIED

MACHINING		SHEET METAL	
X.X	0.0250"	HOLE TO HOLE (SAME SURFACE)	
X.XX	0.0100"	X.X	0.030"
X.XXX	0.0050"	X.XX	0.010"
X.XXXX	0.0005"	X.XXX	0.005"
ANGULAR	0.5°	HOLE TO FOLDED EDGE	
DEBURR ALL		X.X	0.035"
		X.XX	0.025"
		X.XXX	0.015"
		FOLD TO FOLD	
		X.X	0.045"
		X.XX	0.035"
		X.XXX	0.020"
		ANGULAR	1.0°

ALL WEIGHTS ARE IN POUNDS



Allison Park Group, Inc (APG)
4055 Alpha Drive
Allison Park, PA 15101 USA
Phone +1 (412) 487-8211
apgvision.com

DESCRIPTION: 30D-EB ENCLOSURE			
MATERIAL: SEE MATERIAL			
FINISH: SEE BOM			
DRAWN BY:	DATE:	SCALE: 1:2	SHT-SIZE: B
CHECKED BY:	DATE:	PART NUMBER: 30D-EB	APPROX. WEIGHT: 0.7715
			REVISION: A

THIS PRINT IS THE PROPERTY OF ALLISON PARK GROUP. THE INFORMATION CONTAINED HEREIN IS CONFIDENTIAL. IT IS NOT TRANSFERABLE. IT IS FURNISHED WITH THE CLEAR UNDERSTANDING THAT IT IS NOT TO BE TRACED, REPRODUCED OR USED IN ANY PROCESS OF MANUFACTURING WITHOUT WRITTEN PERMISSION FROM THE OWNER AND IS RETURNABLE UPON DEMAND. ANY INFRINGEMENT UPON THE PATENT RIGHTS SHOWN HEREIN, WHETHER IN PART OR WHOLE, WILL BE PROSECUTED.

AS PART OF OUR POLICY OF CONTINUING DEVELOPMENT, ALLISON PARK GROUP RESERVES THE RIGHT TO ALTER SPECIFICATIONS WITHOUT PRIOR NOTICE.

4

3

2

1

4

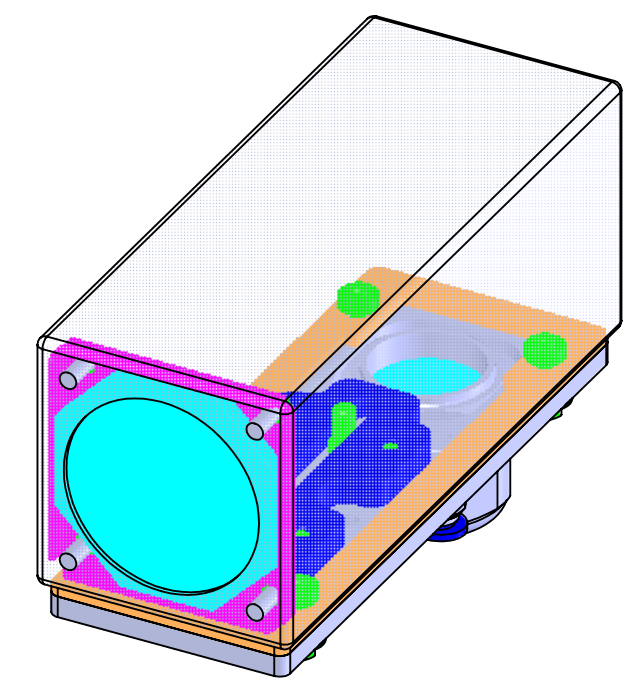
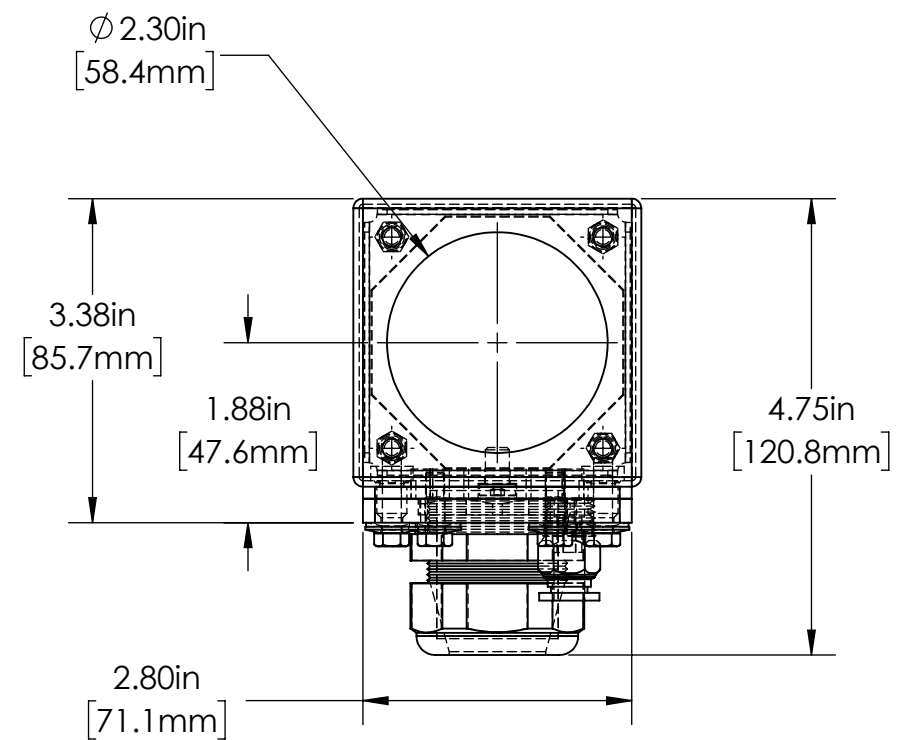
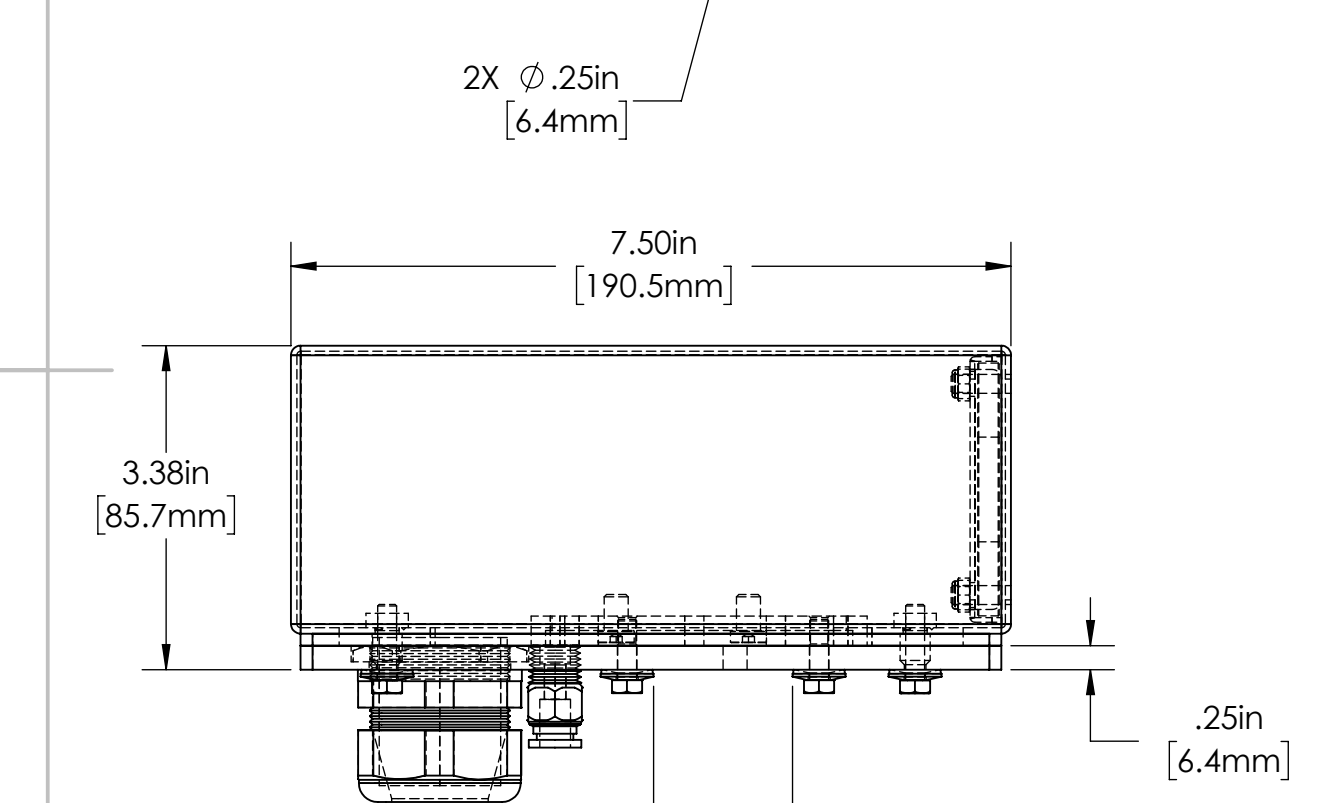
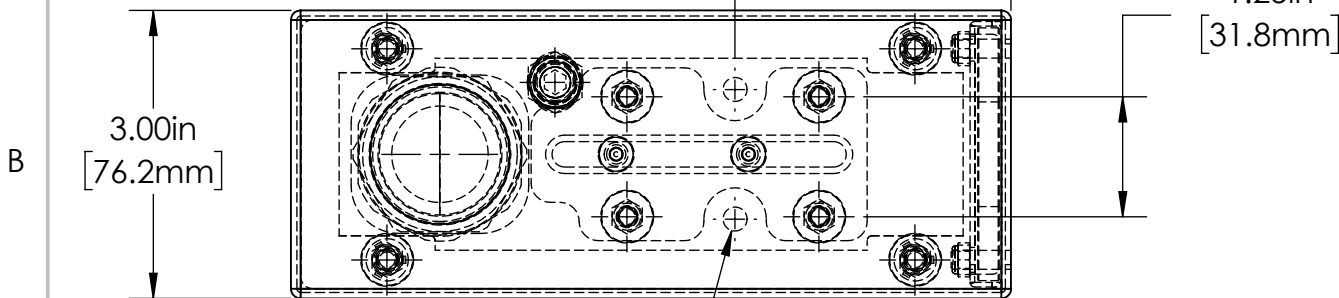
3

2

1

REVISIONS

ZONE	REV.	DESCRIPTION	DATE	APPROVED
	A		7/30/2019	



A

A

TOLERANCES UNLESS OTHERWISE SPECIFIED

MACHINING		SHEET METAL	
X.X	0.0250"	HOLE TO HOLE (SAME SURFACE)	
X.XX	0.0100"	X.X	0.030"
X.XXX	0.0050"	X.XX	0.010"
X.XXXX	0.0005"	X.XXX	0.005"
ANGULAR	0.5°	HOLE TO FOLDED EDGE	
DEBURR ALL		X.X	0.035"
		X.XX	0.025"
		X.XXX	0.015"
		FOLD TO FOLD	
		X.X	0.045"
		X.XX	0.035"
		X.XXX	0.020"
		ANGULAR 1.0°	

ALL WEIGHTS ARE IN POUNDS

THIS PRINT IS THE PROPERTY OF ALLISON PARK GROUP. THE INFORMATION CONTAINED HEREIN IS CONFIDENTIAL. IT IS NOT TRANSFERABLE. IT IS FURNISHED WITH THE CLEAR UNDERSTANDING THAT IT IS NOT TO BE TRACED, REPRODUCED OR USED IN ANY PROCESS OF MANUFACTURING WITHOUT WRITTEN PERMISSION FROM THE OWNER AND IS RETURNABLE UPON DEMAND. ANY INFRINGEMENT UPON THE PATENT RIGHTS SHOWN HEREIN, WHETHER IN PART OR WHOLE, WILL BE PROSECUTED.

AS PART OF OUR POLICY OF CONTINUING DEVELOPMENT, ALLISON PARK GROUP RESERVES THE RIGHT TO ALTER SPECIFICATIONS WITHOUT PRIOR NOTICE.

apg Allison Park Group, Inc (APG)
4055 Alpha Drive
Allison Park, PA 15101 USA
Phone +1 (412) 487-8211
apgvision.com

DESCRIPTION:
30D-EA ENCLOSURE

MATERIAL: **SEE BOM**

FINISH: **SEE BOM**

DRAWN BY: SHUBERT	DATE: 8/3/2010	SCALE: 1:2	SHT-SIZE: B	APPROX. WEIGHT: 0.6234
CHECKED BY:	DATE:	PART NUMBER: 30D-EA ASSY		REVISION: A

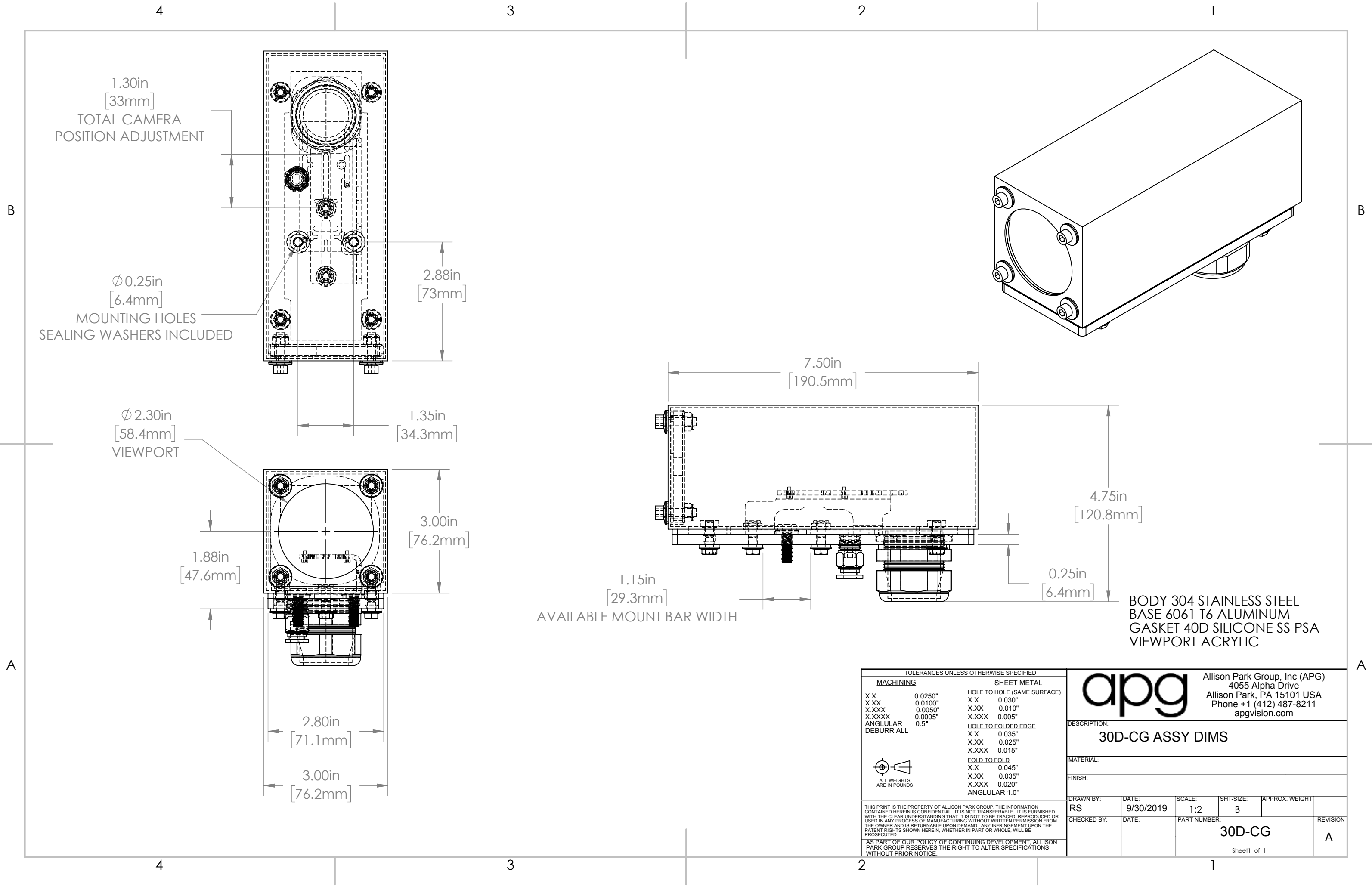
Sheet 1 of 1

4

3

2

1



1.30in
[33mm]
TOTAL CAMERA
POSITION ADJUSTMENT

Ø0.25in
[6.4mm]
MOUNTING HOLES
SEALING WASHERS INCLUDED

Ø2.30in
[58.4mm]
VIEWPORT

2.88in
[73mm]

1.35in
[34.3mm]

3.00in
[76.2mm]

1.88in
[47.6mm]

2.80in
[71.1mm]

3.00in
[76.2mm]

7.50in
[190.5mm]

4.75in
[120.8mm]

0.25in
[6.4mm]

1.15in
[29.3mm]

AVAILABLE MOUNT BAR WIDTH

BODY 304 STAINLESS STEEL
BASE 6061 T6 ALUMINUM
GASKET 40D SILICONE SS PSA
VIEWPORT ACRYLIC

TOLERANCES UNLESS OTHERWISE SPECIFIED

MACHINING		SHEET METAL	
X.X	0.0250"	HOLE TO HOLE (SAME SURFACE)	
X.XX	0.0100"	X.X	0.030"
X.XXX	0.0050"	X.XX	0.010"
X.XXXX	0.0005"	X.XXX	0.005"
ANGULAR	0.5°	HOLE TO FOLDED EDGE	
DEBURR ALL		X.X	0.035"
		X.XX	0.025"
		X.XXX	0.015"
		FOLD TO FOLD	
		X.X	0.045"
		X.XX	0.035"
		X.XXX	0.020"
		ANGULAR 1.0°	

THIS PRINT IS THE PROPERTY OF ALLISON PARK GROUP. THE INFORMATION CONTAINED HEREIN IS CONFIDENTIAL. IT IS NOT TRANSFERABLE. IT IS FURNISHED WITH THE CLEAR UNDERSTANDING THAT IT IS NOT TO BE TRACED, REPRODUCED OR USED IN ANY PROCESS OF MANUFACTURING WITHOUT WRITTEN PERMISSION FROM THE OWNER AND IS RETURNABLE UPON DEMAND. ANY INFRINGEMENT UPON THE PATENT RIGHTS SHOWN HEREIN, WHETHER IN PART OR WHOLE, WILL BE PROSECUTED.

AS PART OF OUR POLICY OF CONTINUING DEVELOPMENT, ALLISON PARK GROUP RESERVES THE RIGHT TO ALTER SPECIFICATIONS WITHOUT PRIOR NOTICE.

apg Allison Park Group, Inc (APG)
4055 Alpha Drive
Allison Park, PA 15101 USA
Phone +1 (412) 487-8211
apgvision.com

DESCRIPTION:
30D-CG ASSY DIMS

MATERIAL:

FINISH:

DRAWN BY: RS	DATE: 9/30/2019	SCALE: 1:2	SHT-SIZE: B	APPROX. WEIGHT
CHECKED BY:	DATE:	PART NUMBER: 30D-CG		REVISION A

4

3

2

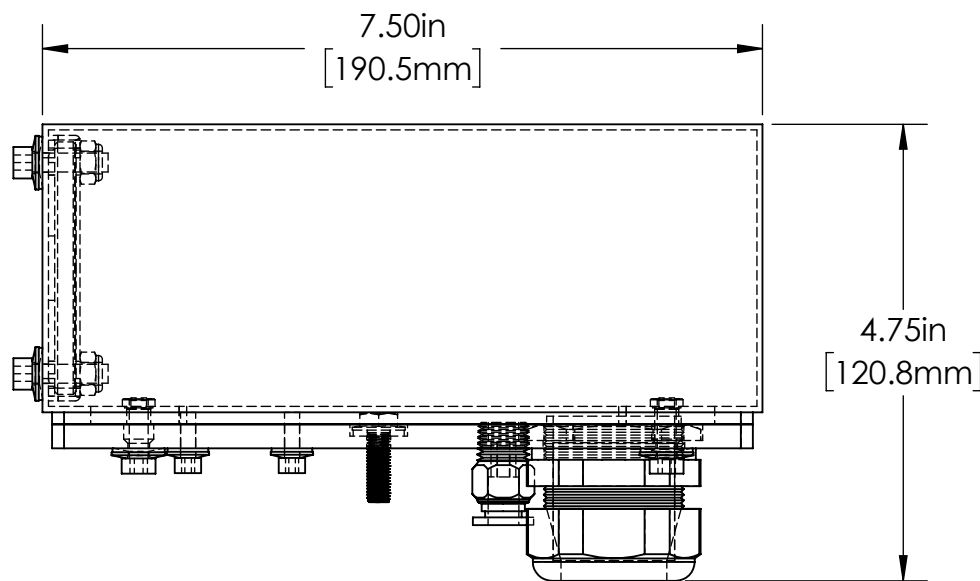
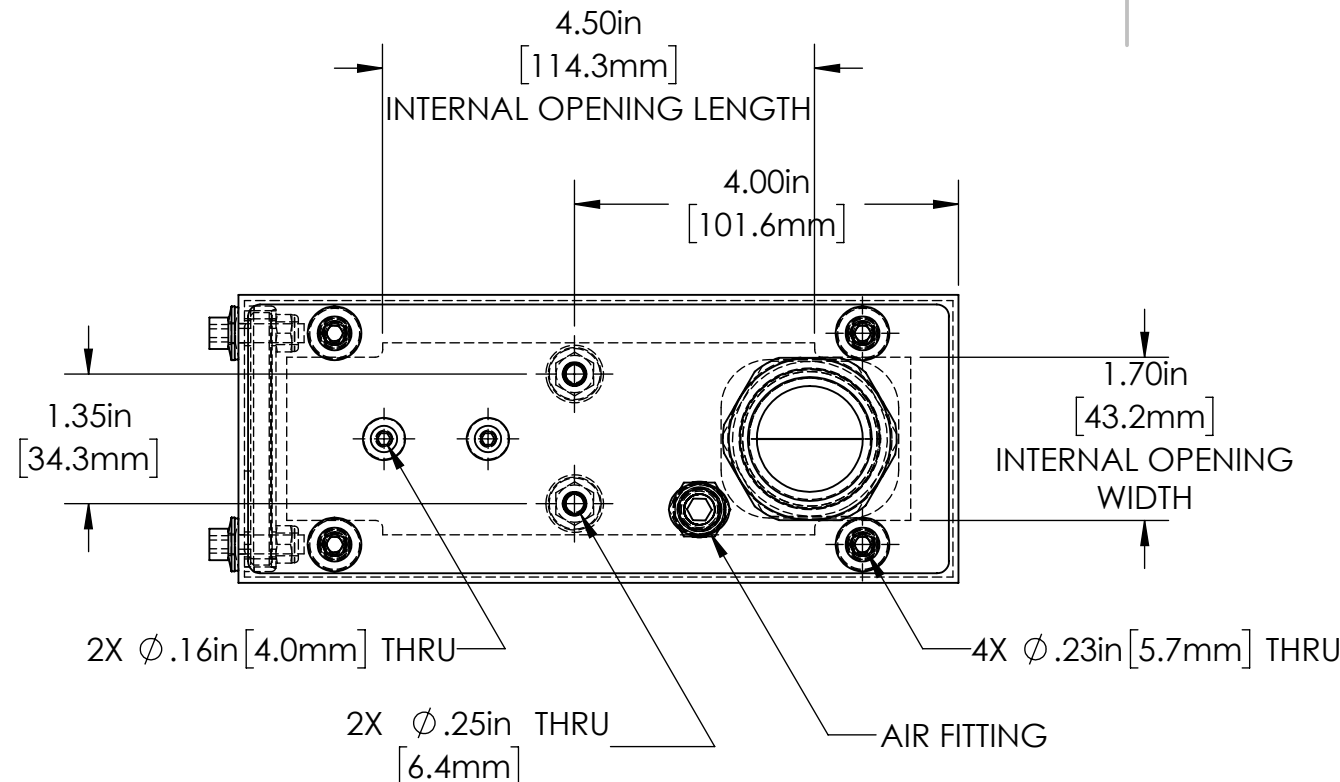
1

B

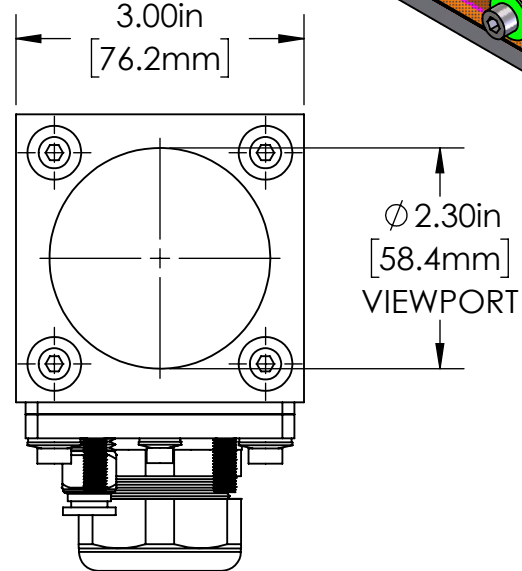
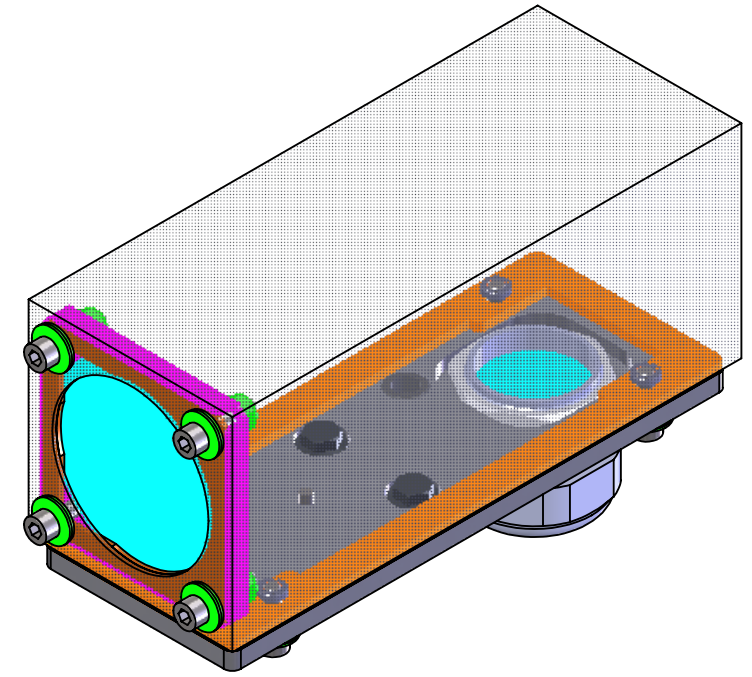
B

A

A



REVISIONS				
ZONE	REV.	DESCRIPTION	DATE	APPROVED
	A		7/30/2019	



30S SERIES PROPERTIES TABLE		
ENVIRONMENT RATING	IP68*	
	(*RATING MAY CHANGE IF INSTALLER MILLS CABLE GLAND OUTSIDE OF TOLERANCE)	
COMPONENT	MATERIAL	FINISH
BODY	304 SS	CLEAR HARDCOAT
VIEWPORT	ACRYLIC	CLEAR
GASKET	40D SILICONE	NONE
ARM/ADAPTOR		
HARDWARE	316 SS - EXTERNAL, 18-8 SS - INTERNAL	NONE

PG21 CORD GRIP

TOLERANCES UNLESS OTHERWISE SPECIFIED			
MACHINING		SHEET METAL	
X.X	0.0250"	HOLE TO HOLE (SAME SURFACE)	
X.XX	0.0100"	X.X	0.030"
X.XXX	0.0050"	X.XX	0.010"
X.XXXX	0.0005"	X.XXX	0.005"
ANGULAR	0.5°	X.XXX	0.015"
DEBURR ALL		HOLE TO FOLDED EDGE	
		X.X	0.035"
		X.XX	0.025"
		X.XXX	0.015"
		FOLD TO FOLD	
		X.X	0.045"
		X.XX	0.035"
		X.XXX	0.020"
		ANGULAR 1.0°	

apg Allison Park Group, Inc (APG)
4055 Alpha Drive
Allison Park, PA 15101 USA
Phone +1 (412) 487-8211
apgvision.com

DESCRIPTION:
30D-CN ENCLOSURE

MATERIAL: **SEE BOM**

FINISH: **SEE BOM**

DRAWN BY: TWD	DATE: 3/30/2020	SCALE: 1:2	SHT-SIZE: B	APPROX. WEIGHT: 2.3804
CHECKED BY:	DATE:	PART NUMBER: 30D-CN		REVISION: A

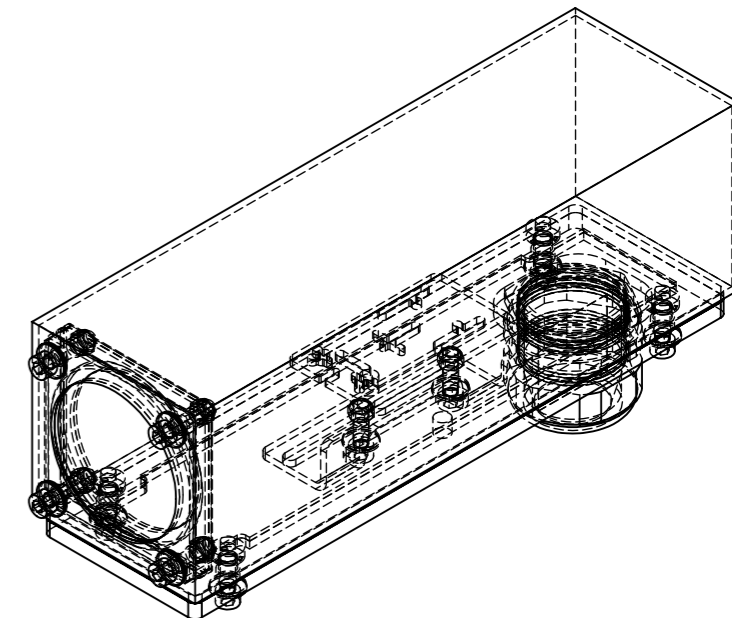
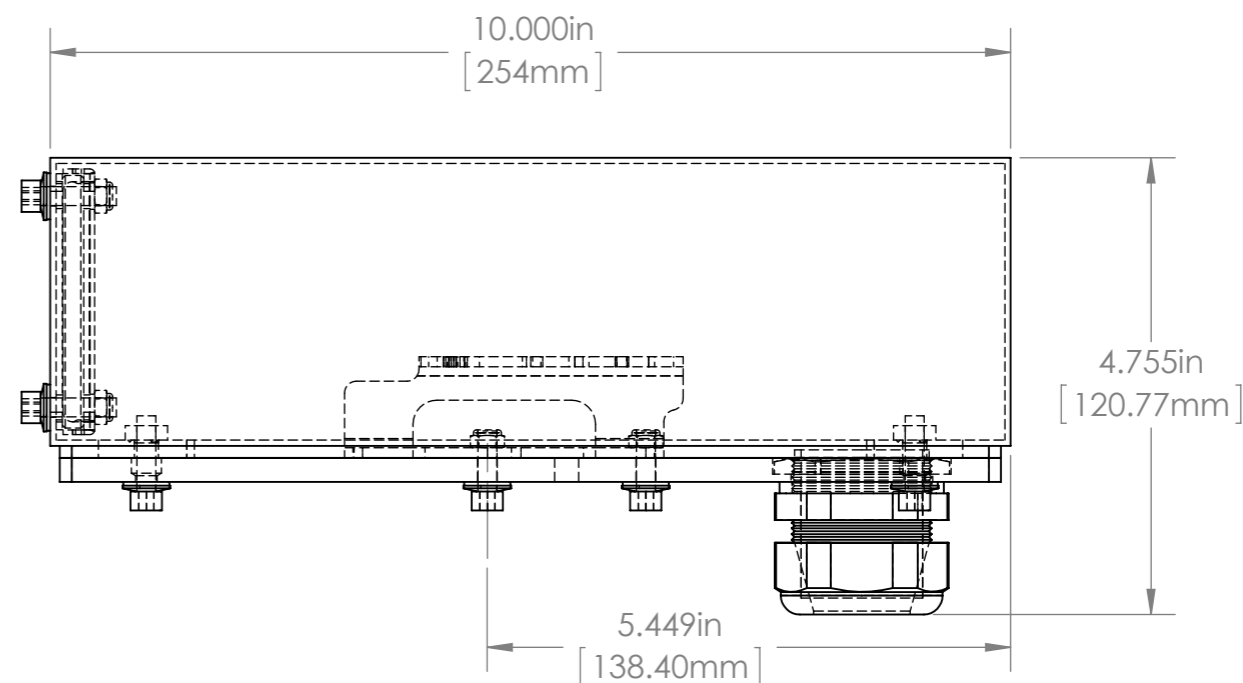
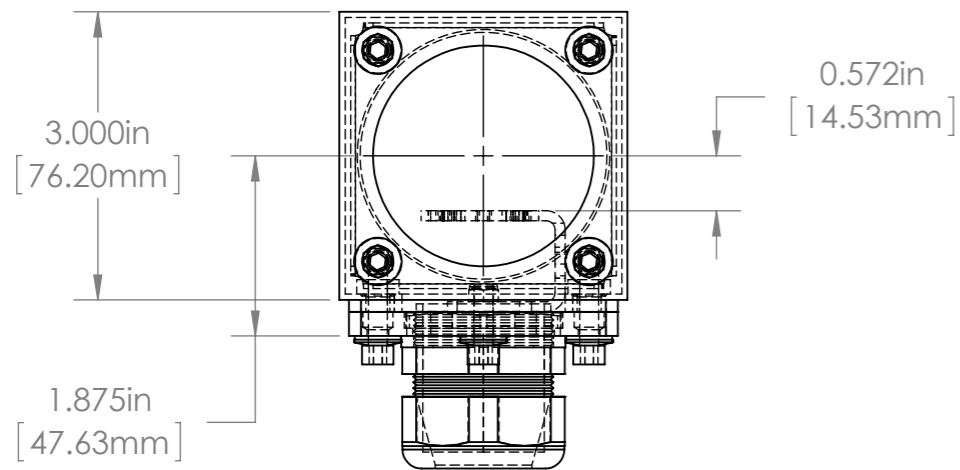
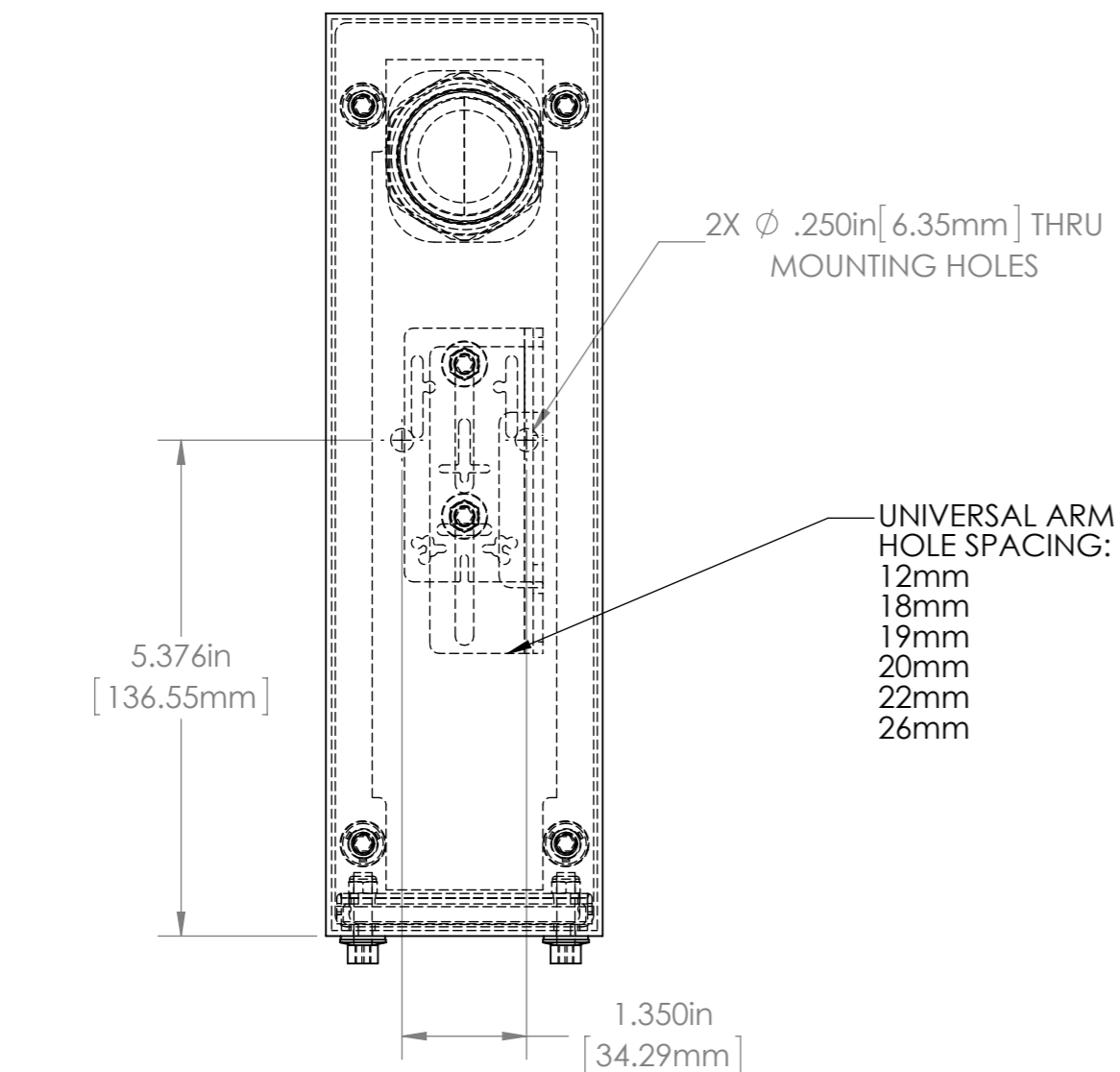
Sheet 1 of 1

4

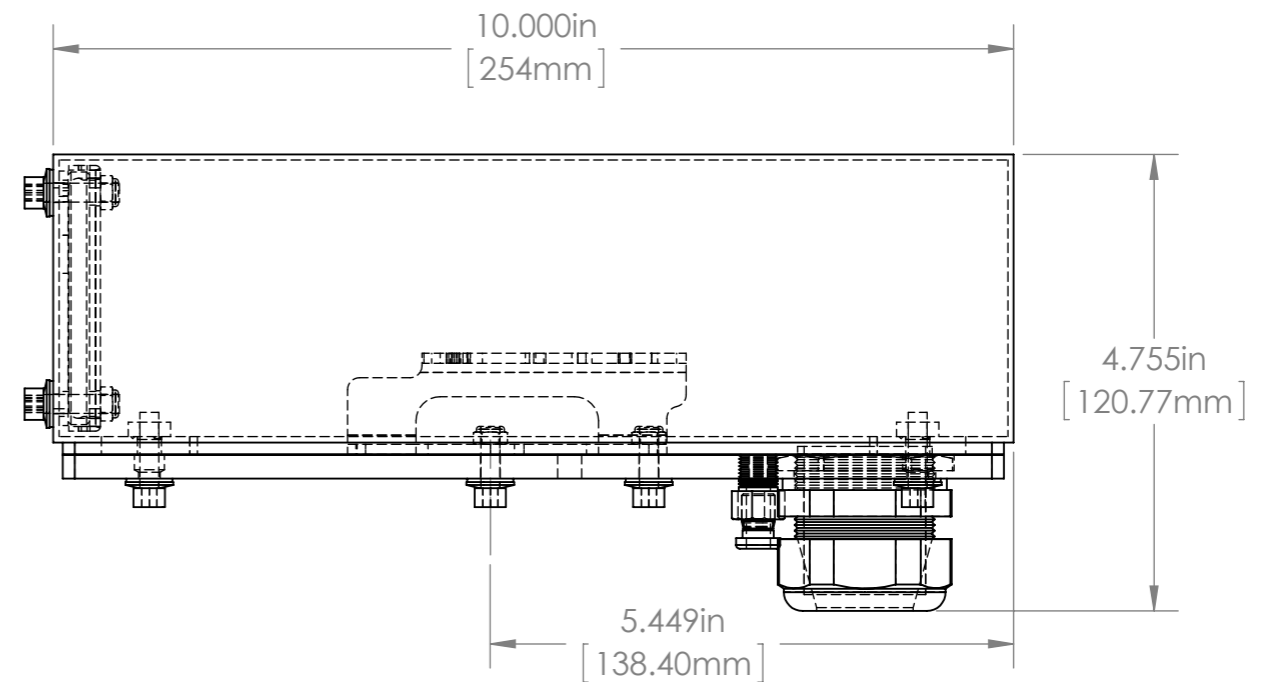
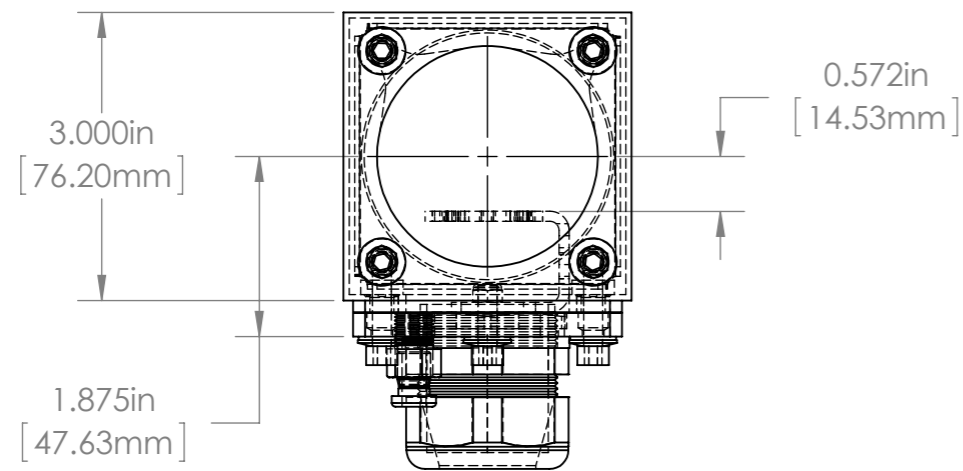
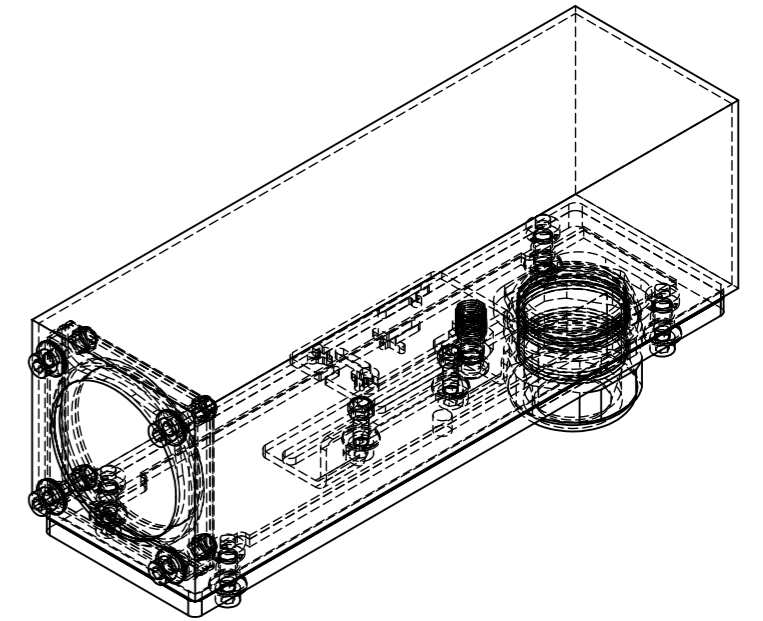
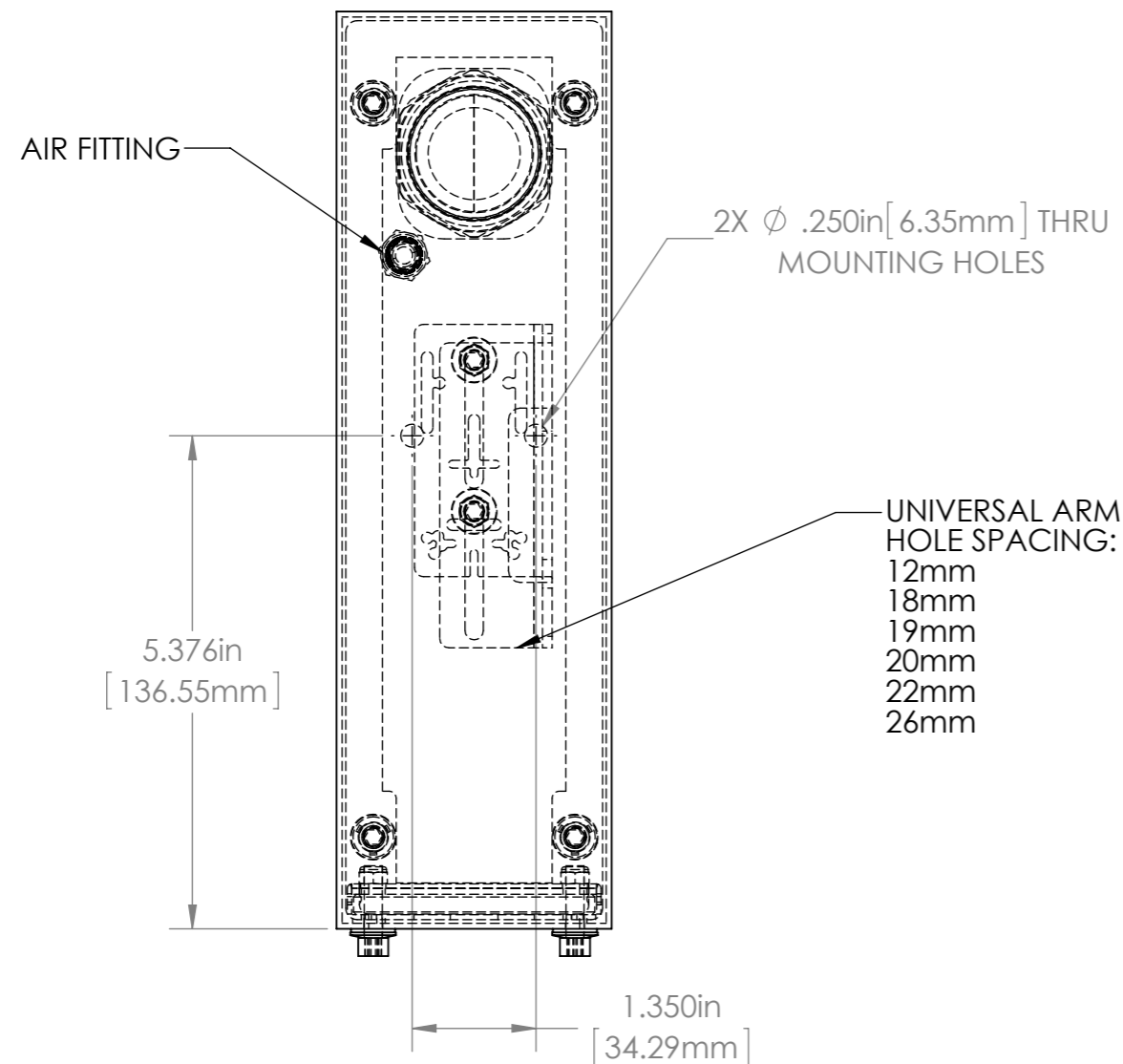
3

2

1



				UNLESS OTHERWISE SPECIFIED: DIMENSIONS ARE IN INCHES SURFACE FINISH: TOLERANCES: .000= +/- 0.005" .00= +/- 0.010"	FINISH: BODY: BURNISHED BASE: CLEAR HARDCOAT ANODIZE DEBUR AND BREAK SHARP EDGES	Allison Park Group, Inc. (APG) 4055 Alpha Drive Allison Park, PA 15101 USA	DO NOT SCALE DRAWING	REVISION
				LINEAR:		Phone +1 (412) 487-8211 Fax +1 (412) 486-3157	This document is the property of APG and is considered company confidential. The information in this document is the property of APG and may not be used, reproduced, or distributed in whole or in part without the prior written permission of APG.	
				NAME	SIGNATURE	DATE	TITLE:	
				DRAWN	SCHUBERT	11/4/2011	30D-BC (10in UNIVERSAL EPDM)	
				CHK'D			DWG NO.	
				APP'VD			30D-BC ASSY DIMS	
				MFG			SCALE: 1:5	
				Q.A			SHEET 1 OF 1	
				NOTES:	MATERIAL: BASE: ALUMINUM 6061 T6 BODY: 304 STAINLESS STEEL		A3	
				EPDM BASE & VITON VP GASKETS		WEIGHT:		
NO.	CHANGE	DATE	INIT.					



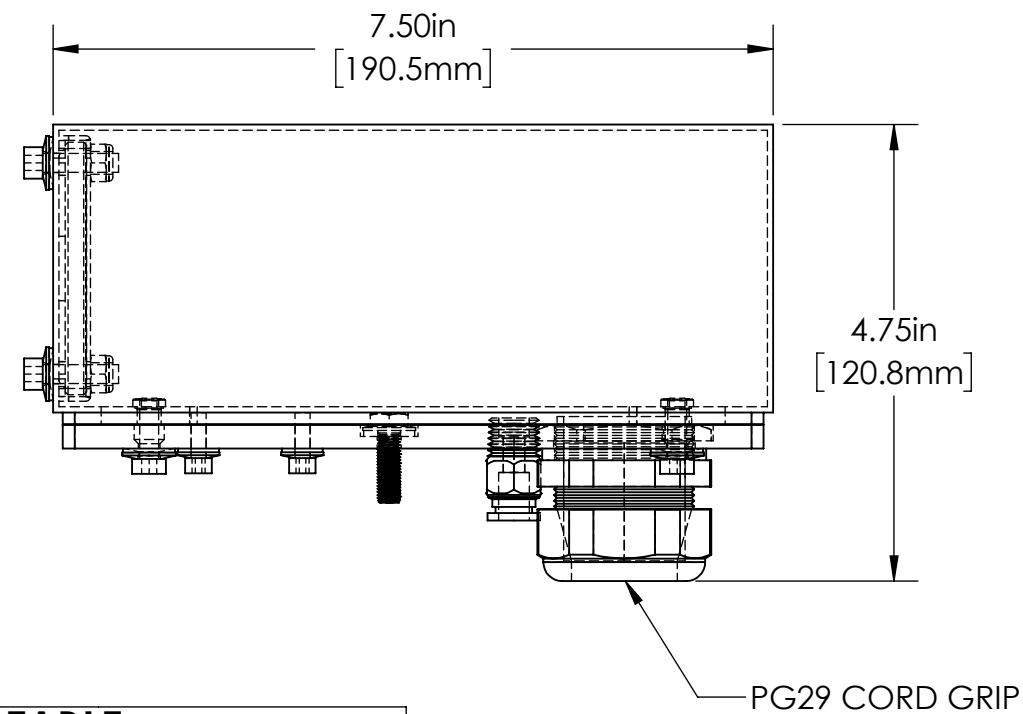
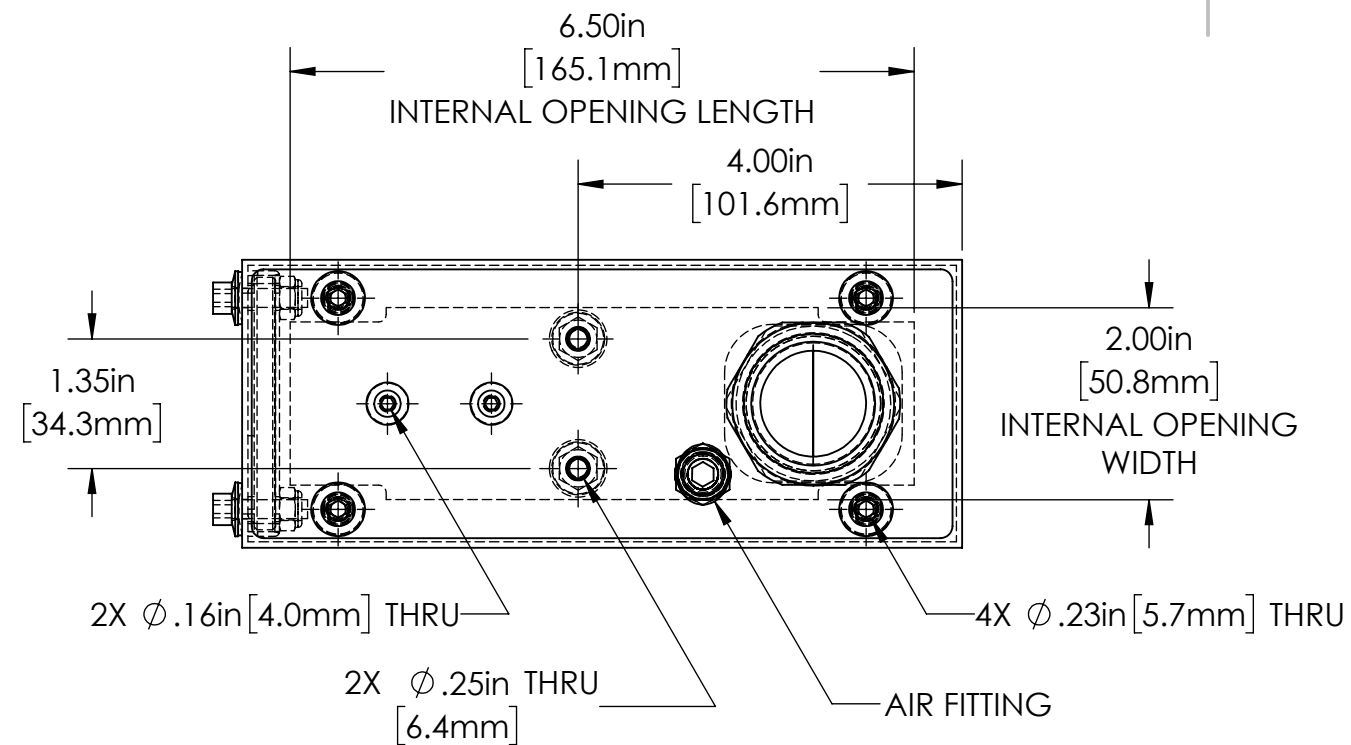
				UNLESS OTHERWISE SPECIFIED: DIMENSIONS ARE IN INCHES SURFACE FINISH: TOLERANCES: .000= +/- 0.005" .00= +/- 0.010"	FINISH: BODY: BURNISHED BASE: CLEAR HARDCOAT ANODIZE DEBUR AND BREAK SHARP EDGES	Allison Park Group, Inc. (APG) 4055 Alpha Drive Allison Park, PA 15101 USA	DO NOT SCALE DRAWING	REVISION
				LINEAR:		Phone +1 (412) 487-8211 Fax +1 (412) 486-3157	This document is the property of APG and is considered company confidential. The information in this document is the property of APG and may not be used, reproduced, or distributed in whole or in part without the prior written permission of APG.	
				NAME	SIGNATURE	DATE	TITLE:	
				DRAWN	SCHUBERT	1/23/2013	30D-BF (10in UNIVERSAL ACFP)	
				CHK'D			DWG NO.	
				APPVD			30D-BF ASSY DIMS	
				MFG			SCALE: 1:5	
				Q.A			SHEET 1 OF 1	
				NOTES:	MATERIAL: BASE: ALUMINUM 6061 T6 BODY: 304 STAINLESS STEEL		A3	
				EPDM BASE & VITON VP GASKETS		WEIGHT:		
NO.	CHANGE	DATE	INIT.					

4

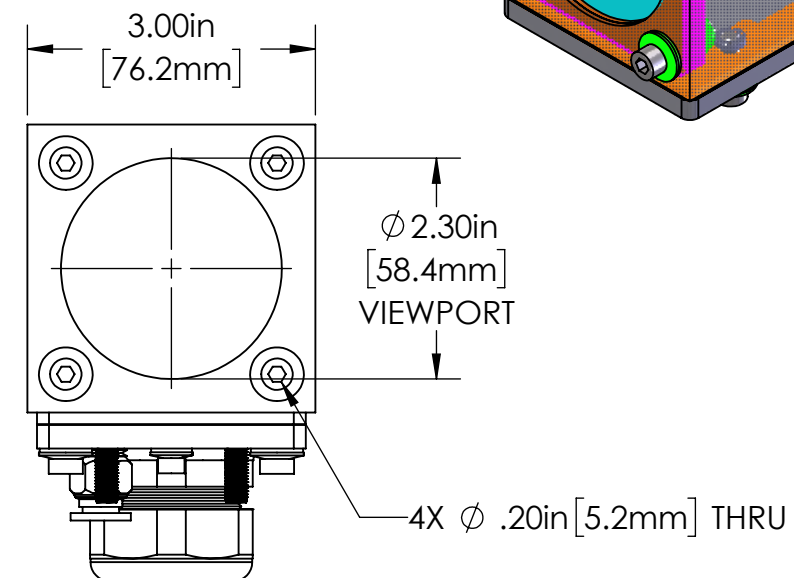
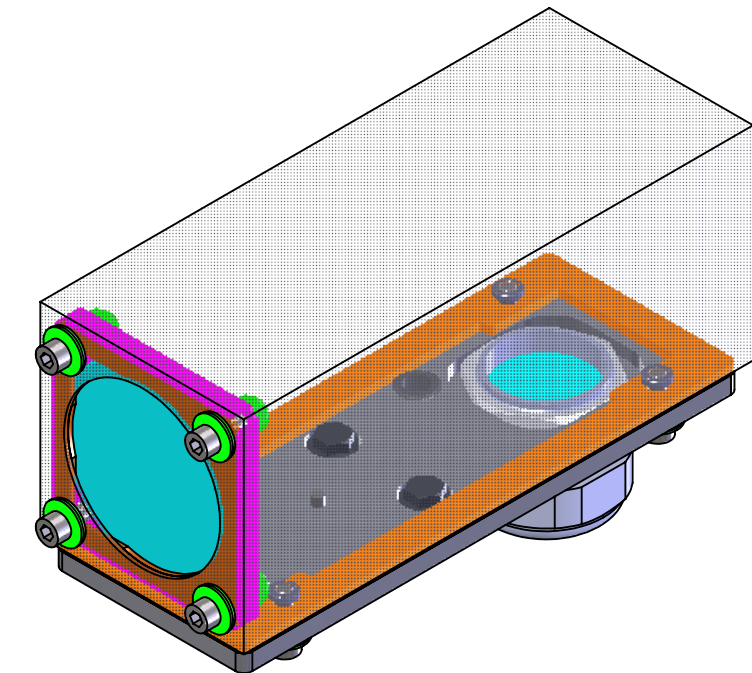
3

2

1



REVISIONS				
ZONE	REV.	DESCRIPTION	DATE	APPROVED
	A		7/30/2019	



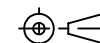
PROPERTIES TABLE

ENVIRONMENT RATING	IP68*	
	(*RATING MAY CHANGE IF INSTALLER MILLS CABLE GLAND OUTSIDE OF TOLERANCE)	
COMPONENT	MATERIAL	FINISH
BODY	304 SS	CLEAR HARDCOAT
VIEWPORT	GLASS	NONE
GASKET	40D SILICONE	NONE
ARM/ADAPTOR		
HARDWARE	316 SS - EXTERNAL, 18-8 SS - INTERNAL	NONE

TOLERANCES UNLESS OTHERWISE SPECIFIED

MACHINING

X.X 0.0250"
X.XX 0.0100"
X.XXX 0.0050"
X.XXXX 0.0005"
ANGULAR 0.5°
DEBURR ALL



ALL WEIGHTS ARE IN POUNDS

SHEET METAL

HOLE TO HOLE (SAME SURFACE)
X.X 0.030"
X.XX 0.010"
X.XXX 0.015"
HOLE TO FOLDED EDGE
X.X 0.035"
X.XX 0.025"
X.XXX 0.015"
FOLD TO FOLD
X.X 0.045"
X.XX 0.035"
X.XXX 0.020"
ANGULAR 1.0°

THIS PRINT IS THE PROPERTY OF ALLISON PARK GROUP. THE INFORMATION CONTAINED HEREIN IS CONFIDENTIAL. IT IS NOT TRANSFERABLE. IT IS FURNISHED WITH THE CLEAR UNDERSTANDING THAT IT IS NOT TO BE TRACED, REPRODUCED OR USED IN ANY PROCESS OF MANUFACTURING WITHOUT WRITTEN PERMISSION FROM THE OWNER AND IS RETURNABLE UPON DEMAND. ANY INFRINGEMENT UPON THE PATENT RIGHTS SHOWN HEREIN, WHETHER IN PART OR WHOLE, WILL BE PROSECUTED.

AS PART OF OUR POLICY OF CONTINUING DEVELOPMENT, ALLISON PARK GROUP RESERVES THE RIGHT TO ALTER SPECIFICATIONS WITHOUT PRIOR NOTICE.

Allison Park Group, Inc (APG)
4055 Alpha Drive
Allison Park, PA 15101 USA
Phone +1 (412) 487-8211
apgvision.com

DESCRIPTION:

30D-AU ENCLOSURE

MATERIAL: SEE BOM

FINISH: SEE BOM

DRAWN BY: TWD	DATE: 3/30/2020	SCALE: 1:2	SHT-SIZE: B	APPROX. WEIGHT: 2.3804
CHECKED BY:	DATE:	PART NUMBER: 30D-AU	REVISION: A	

Sheet 1 of 1

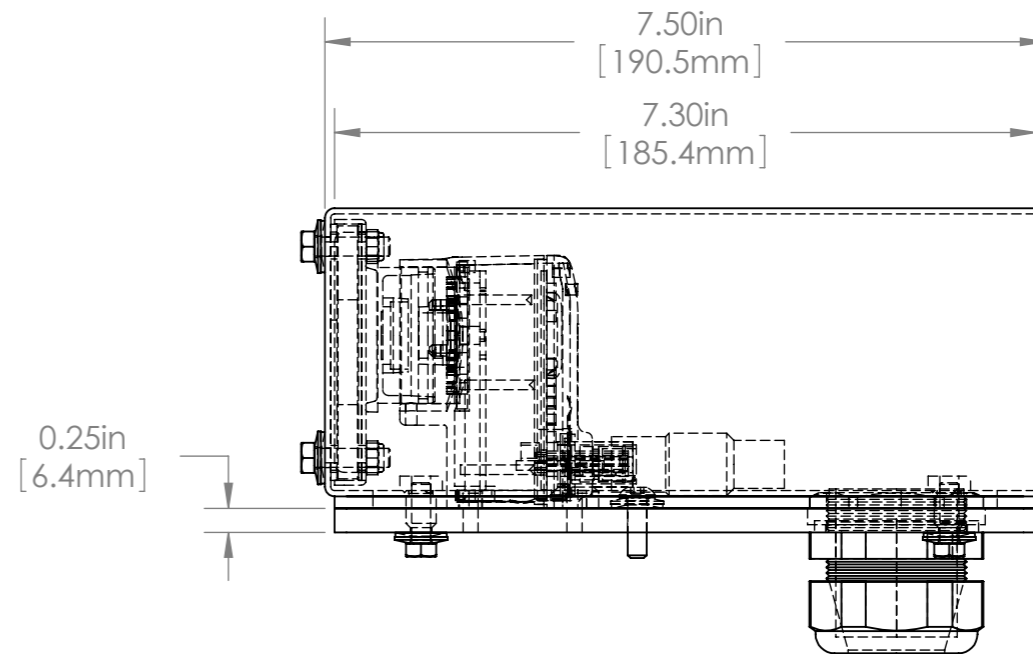
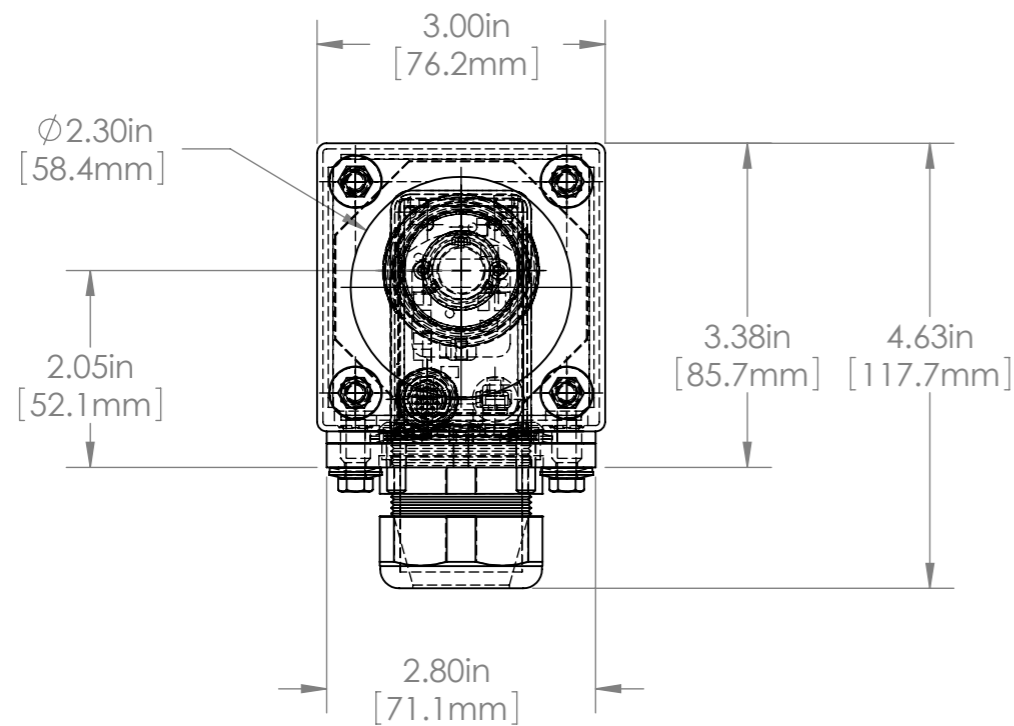
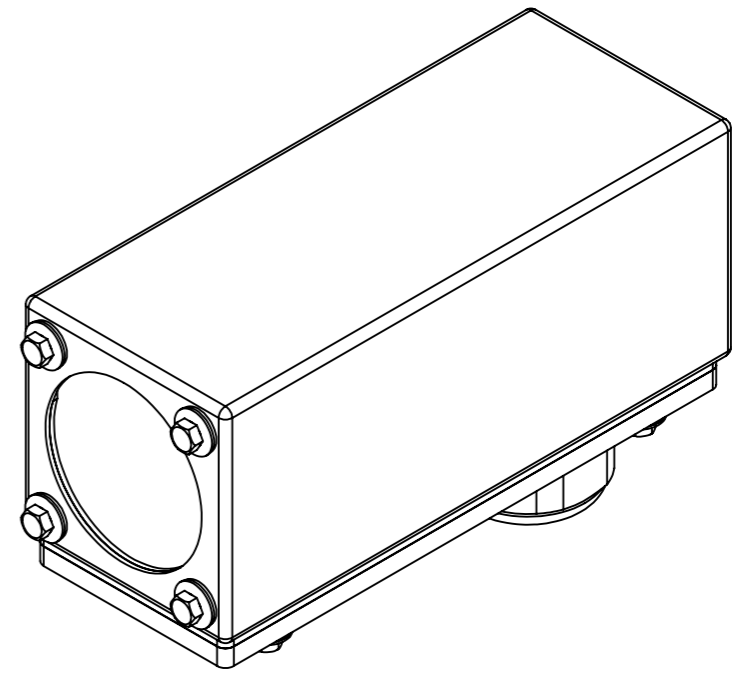
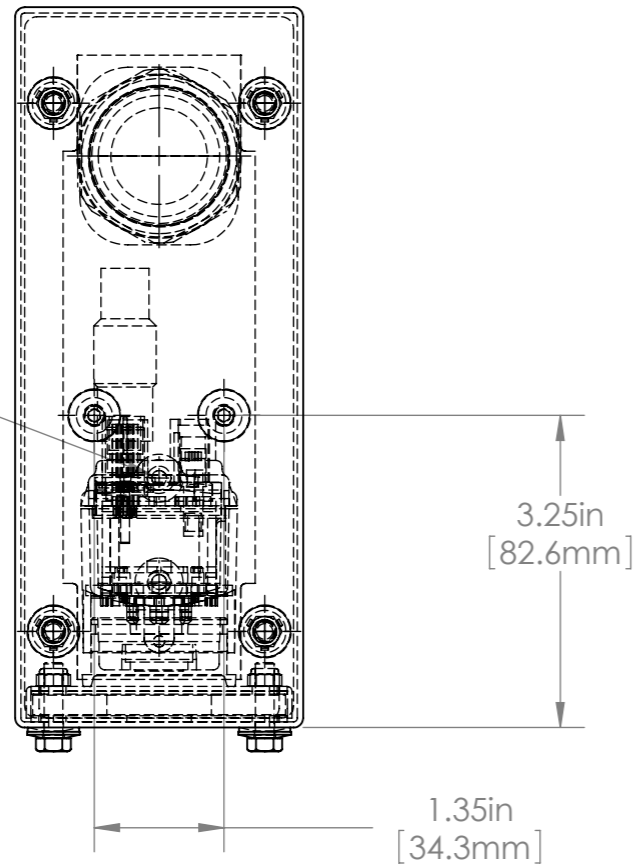
4

3

2

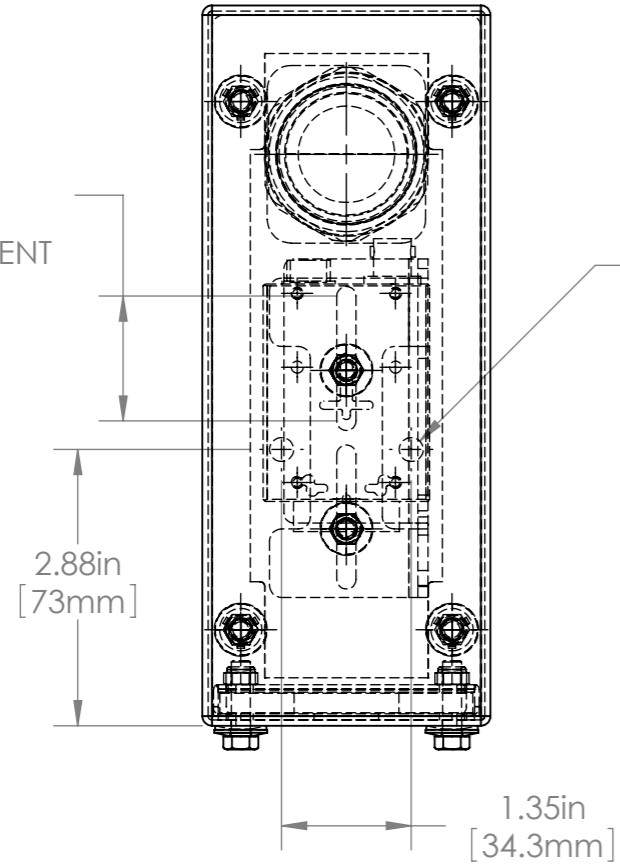
1

2 \varnothing 0.16in
[4mm]
SEALING WASHERS
INCLUDED
USE BUTTON
HEAD SCREWS

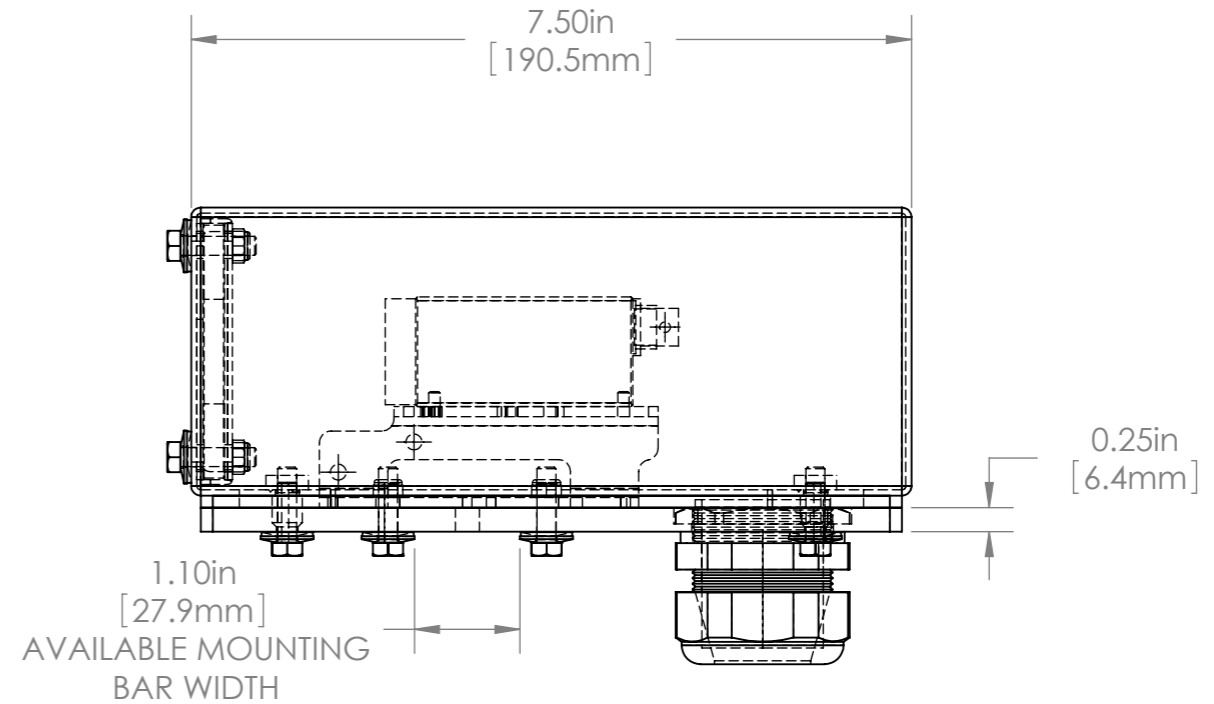
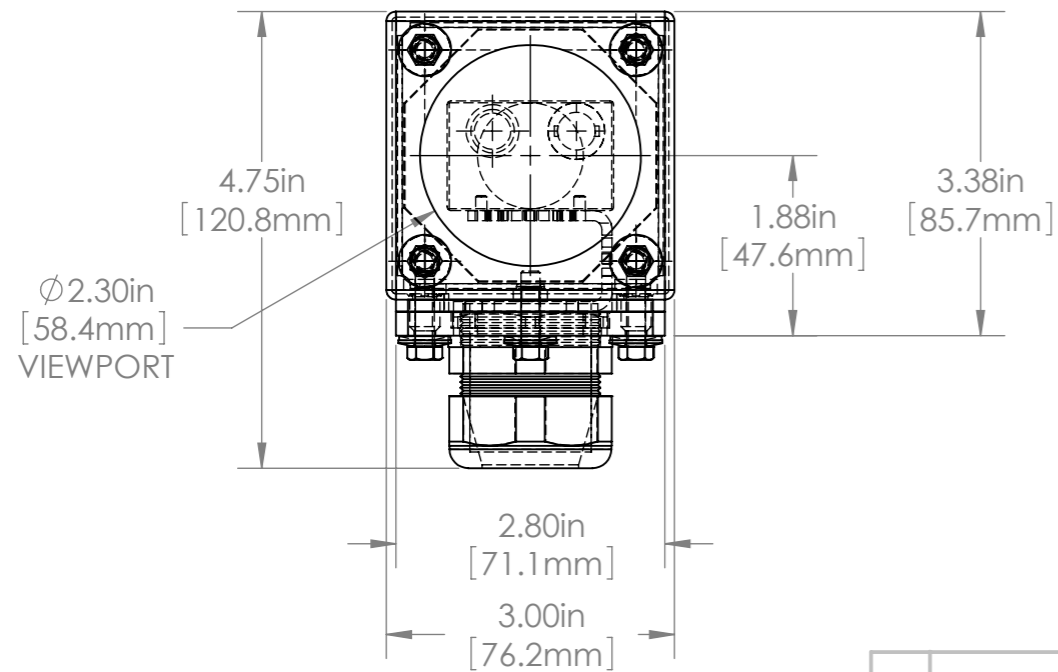
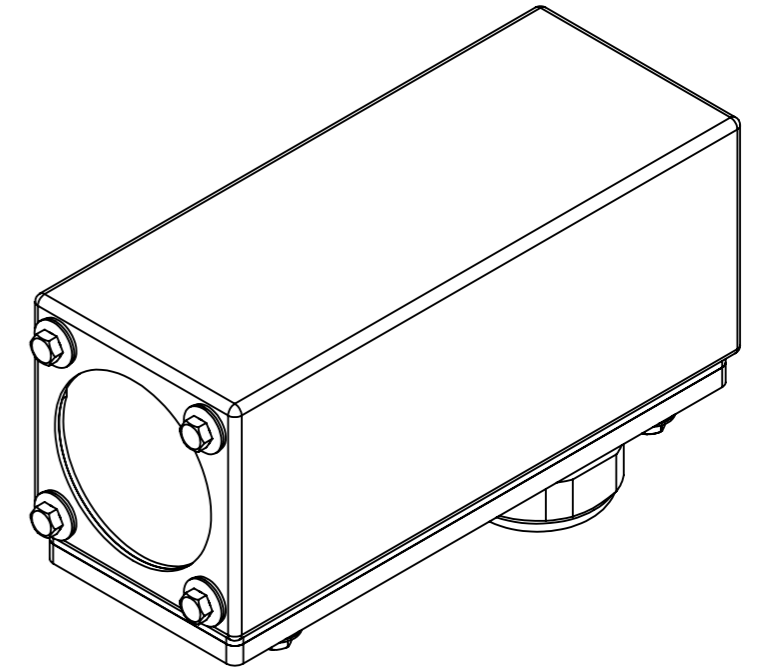


				UNLESS OTHERWISE SPECIFIED: DIMENSIONS ARE IN INCHES SURFACE FINISH: TOLERANCES: .000= +/- 0.005" .00= +/- 0.010"		FINISH: DEBUR AND BREAK SHARP EDGES		Allison Park Group, Inc. (APG) 4055 Alpha Drive Allison Park, PA 15101 USA		DO NOT SCALE DRAWING		REVISION	
				LINEAR:				Phone +1 (412) 487-8211 Fax +1 (412) 486-3157		This document is the property of APG and is considered company confidential. The information in this document is the property of APG and may not be used, reproduced, or distributed in whole or in part without the prior written permission of APG			
				DRAWN		SIGNATURE		www.apgvision.com		TITLE: 30D-AL ASSY DIMS (CHECKER 200)			
				CHK'D				MATERIAL: 304 STAINLESS STEEL BODY 6061 T6 HARDCOAT ANODIZED ALUMINUM BASE EPDM GASKETS		DWG NO.		A3	
				APPVD				WEIGHT:		SCALE: 1:5		SHEET 1 OF 1	
				MFG									
				Q.A									
				NOTES:									
NO.	CHANGE	DATE	INIT.										

1.30in
[33mm]
TOTAL CAMERA
POSITION ADJUSTMENT

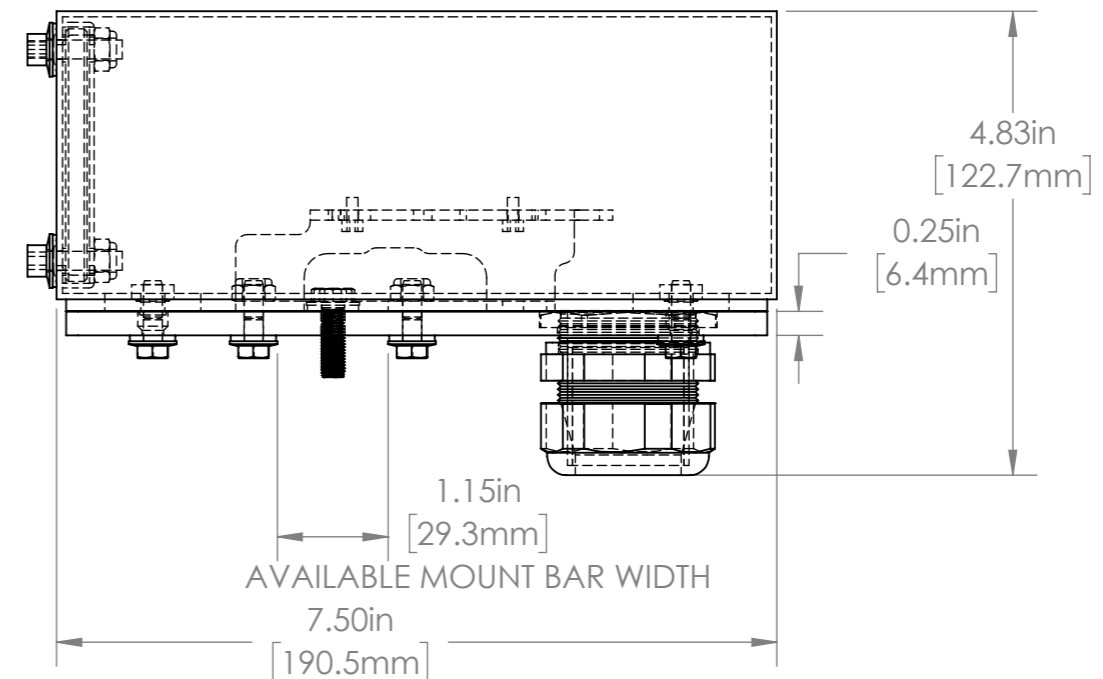
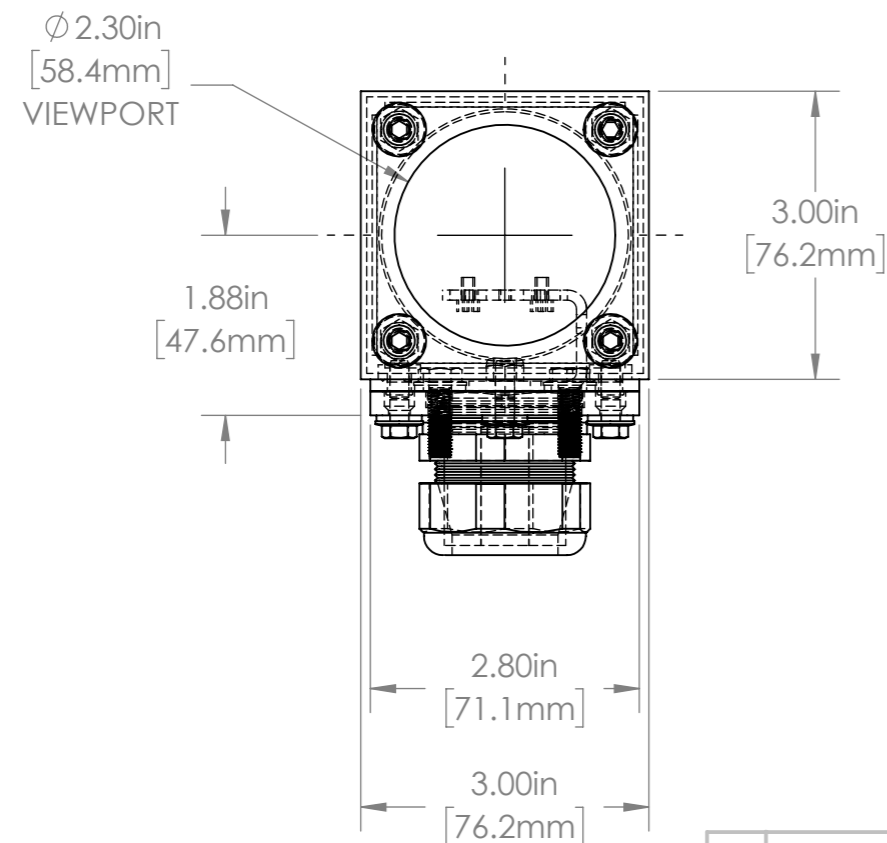
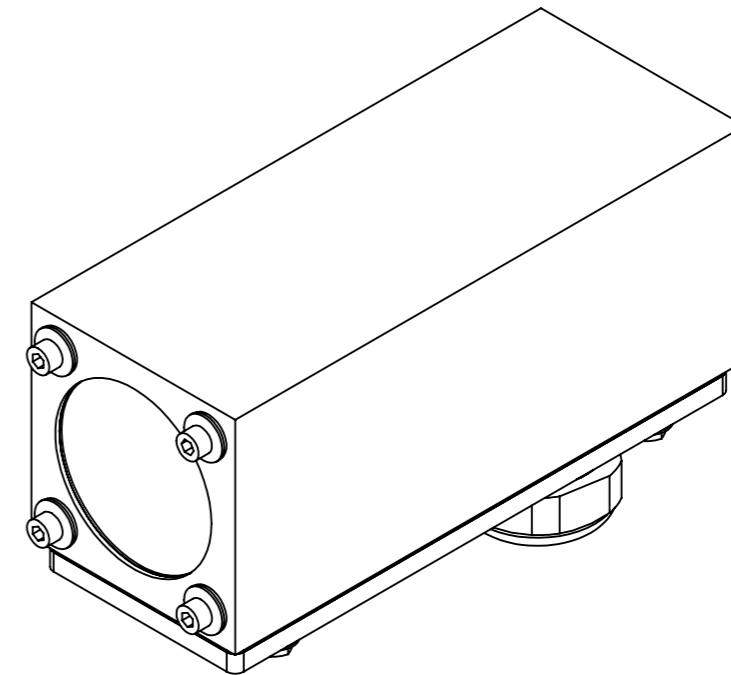
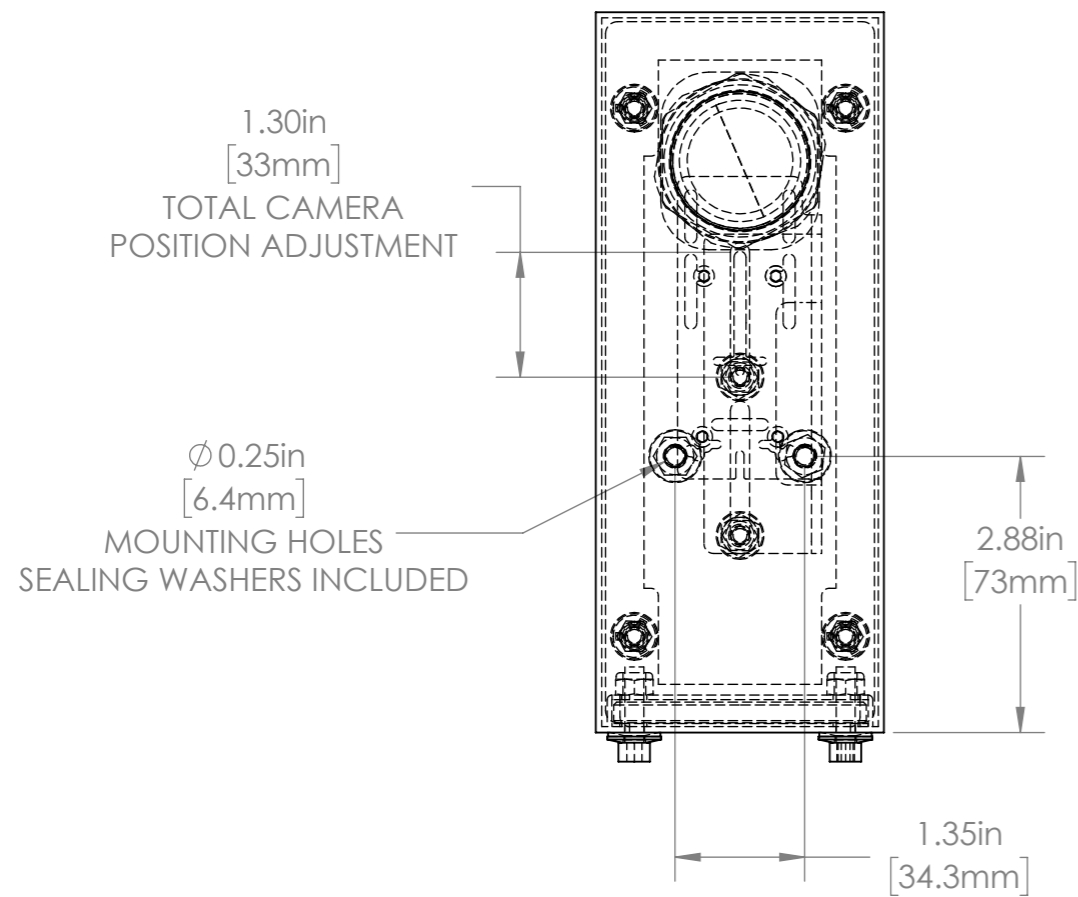


2 \varnothing 0.25in
[6.4mm]
MOUNTING HOLES
SEALING WASHERS INCLUDED



MATERIAL:
304 STAINLESS STEEL BODY
6061 T6 HARDCOAT ANODIZED ALUMINUM BASE
EPDM GASKETS
GLASS WINDOW

				UNLESS OTHERWISE SPECIFIED: DIMENSIONS ARE IN INCHES SURFACE FINISH: TOLERANCES: .000= +/- 0.005" .00= +/- 0.010"		FINISH: DEBUR AND BREAK SHARP EDGES		DO NOT SCALE DRAWING		REVISION	
				LINEAR:				Allison Park Group, Inc. (APG) 4055 Alpha Drive Allison Park, PA 15101 USA		This document is the property of APG and is considered company confidential. The information in this document is the property of APG and may not be used, reproduced, or distributed in whole or in part without the prior written permission of APG	
				DRAWN SCHUBERT		SIGNATURE		Phone +1 (412) 487-8211 Fax +1 (412) 486-3157		TITLE: 30D-AF UNIVESAL ARM GLASS VIEWPORT	
				CHK'D		DATE 8/3/2010		www.apgvision.com		DWG NO.	
				APPV'D				MATERIAL: SEE NOTE AT LEFT		30D-AF	
				MFG				WEIGHT:		SCALE: 1:2	
				Q.A				NOTES:		SHEET 1 OF 1	
				NO. CHANGE		DATE INIT.				A3	



For more information please contact:



BOCK OPTRONICS INC.
14 Steinway Blvd., Unit 7
Toronto, Ontario M9W 6M6

Tel: (416) 674-2804
sales@bockoptronics.ca
www.bockoptronics.ca

				UNLESS OTHERWISE SPECIFIED: DIMENSIONS ARE IN INCHES SURFACE FINISH: TOLERANCES: .000= +/- 0.005" .00= +/- 0.010"		FINISH: DEBUR AND BREAK SHARP EDGES		Allison Park Group, Inc. (APG) 4055 Alpha Drive Allison Park, PA 15101 USA		DO NOT SCALE DRAWING		REVISION	
				LINEAR:				Phone +1 (412) 487-8211 Fax +1 (412) 486-3157		TITLE: 30D-AD (universal acrylic)			
				DRAWN M. HART		SIGNATURE		DATE 1/2/2018		DWG NO.		A3	
				CHK'D				www.apgvision.com		30D-AD			
				APPVD				MATERIAL:		SCALE: 1:2		SHEET 1 OF 1	
				MFG				WEIGHT: 0.793					
				Q.A									
				NOTES:									
NO.	CHANGE	DATE	INIT.										