

Model ZLP1

Compact, powerful, and easy to use

ZLP1 is a cost effective entry to laser projection. It is the smallest laser projector in the Z-LASER ZLP family.

ZLP1 is directed to 2D and 3D applications like pick-and-place, logistics and workstations. Enlarge and optimize your production or workflow by this easy to use laser projection system. ZLP1 is eye-safe (laser class 2M) and covers working fields from 1.0 m x 1.0 m up to 3.5 m x 3.5 m. Possible working distances range from 1.0 m to 3.0 m.

We offer our own software ZLP-Suite, which has an intuitive software interface with many customizable options and as a result customers can adapt the settings according to their specific application. Furthermore, ZLP-Suite can be upgraded with additional software modules. Thanks to its numerous connectivity options the laser projector can be operated through various software interfaces such as C++, C#, Python or even with Microsoft Excel and Microsoft PowerPoint.

Ask Z-LASER for OEM integration.



Wavelength: 520 nm



Intuitive software



Optical angle 60°



Optimized for 2D and 3D projection



Integration into multiprojector systems



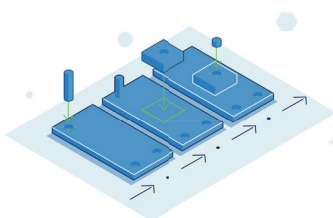
Active or passive cooling system



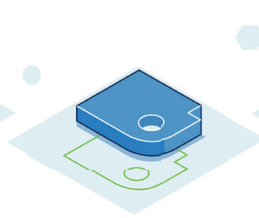
IP54

Highlights

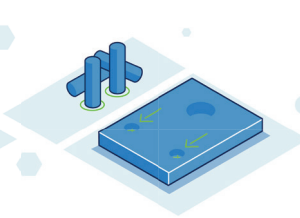
- Cost-effective laser projection system
- Easily operable via a variety of software interfaces
- Projection of 2D and 3D objects
- Optimized for interactive learning applications and workstations
- Easy integration into multi projection systems
- Data transmission via ethernet
- Passive or active cooling



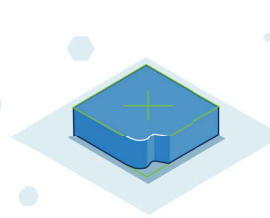
Assembly Assistance



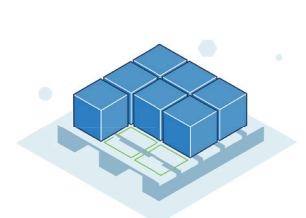
Put-to-Light



Pick-and-Place



Quality Control



Logistics

System specifications

Laser source	Green laser diode
Wavelength	520 nm
Output power	5 mW ⁽¹⁾
Laser class (on EN 60825)	2M
Fan angle	60° x 60°
Accuracy ⁽²⁾ (depends on projection distance)	3 mm/m
Working distance (fixed focus at 2 m)	1 m up to 3 m
Frequency of projection	Max. 50 Hz (depends on the projection)
Weight	3.4 kg (plus ca. 1.4 kg for separate power supply)
Dimensions (L x W x H)	314 x 111 x 96 mm (137 mm incl. fan) 12.36 x 4.37 x 3.77 in (5.39 incl fan)
IP protection class	IP54

Software / handling

Software	ZLP-Suite
SDK	C++, C#, Python VBA (Excel, PowerPoint)
Graphics format	HPGL / HPGL 3D

Accessories

Optional accessories	Remote control, power supply, glass reflectors, mounting, binder plug
----------------------	---

Electrical specifications

Operating voltage	24 VDC ±10%
Protection class electrical	3 (protective low voltage)
Interfaces	Ethernet TP
Power consumption (typical)	40 W- 70 W (max. 100 W)

Ambient Conditions

Operating condition	+5 °C up to +40 °C (with passive cooling) +5 °C up to +45 °C (with active cooling)
Storage temperature	-5° C up to +60 °C
Humidity (max.)	< 80% relative, non-condensing
Working range in relationship to the mounting height (in mm)	Optical angle 60° (in mm)
1.000	1.155
1.500	1.732
2.000	2.309
2.500	2.887
3.000	3.464

⁽¹⁾ (TÜV CDRH certified nominal at beam exit)

⁽²⁾ (At 32° C block temperature, optical angle 60° and 0° inclination)