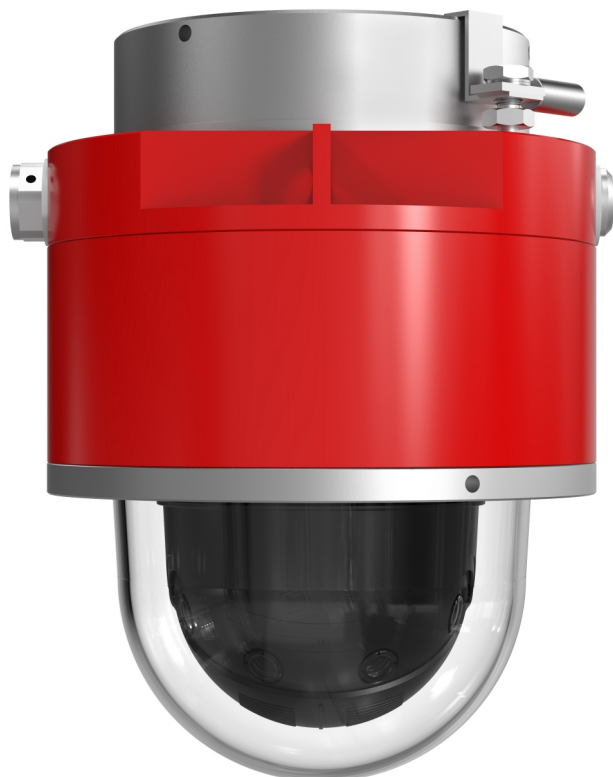


D101-A XF P3807 Explosion-Protected Network Camera

Seamless 180° coverage for hazardous areas

D101-A XF P3807 delivers 180° panoramic overviews with excellent images and no blind spots. This 8-megapixel multisensor camera captures quality forensic images at up to 30 fps. With four sensors built into a single camera, and seamless stitching of all four images, this lightweight camera lets you monitor one, single smooth and cohesive video stream instead of watching multiple streams. It's certified worldwide with Class I/II/III, Division 1 and Zone 1 for use in explosion-prone applications. It's enclosed in an IP66 rated aluminum red housing and includes Forensic WDR and Lightfinder for clear, sharp images even in challenging light.

- > [Certified for Class I/II/III, Division 1 and Zone 1](#)
- > [Seamless 180° panoramic overviews](#)
- > [8 MP, 180° multisensor camera](#)
- > [Cost-efficient installation with PoE](#)
- > [Forensic WDR and Lightfinder](#)



D101-A XF P3807 Explosion-Protected Network Camera

Camera	
Image sensor	4 x 1/2.9" progressive scan RGB CMOS
Lens	Fixed 3.2 mm, F2.0 Horizontal field of view: 180° Vertical field of view: 90°
Day and night	Automatically removable infrared-cut filter
Minimum illumination	Color: 0.17 lux, F2.0 B/W: 0.05 lux, F2.0
Shutter speed	1/33500 to 1/10 s
Camera angle adjustment	Pan ±180° Tilt 0°, 35°, 45°, 55° Roll ±10° Default tilt angle: 45°
Video	
Video compression	H.264 (MPEG-4 Part 10/AVC) Baseline, Main and High Profiles Motion JPEG
Resolution	4320x1920 to 480x270
Frame rate	8.3 MP (client dewarp): up to 25/30 fps (50/60 Hz) without WDR, up to 12.5/15 fps (50/60 Hz) with WDR 7.5 MP (dewarped): up to 12.5/15 fps (50/60 Hz)
Video streaming	8.3 MP (client dewarp): 1 individually configurable stream in H.264 and Motion JPEG 7.5 MP (dewarped): 2 individually configurable streams in H.264 and Motion JPEG Axis Zipstream technology in H.264 Controllable frame rate and bandwidth VBR/MBR H.264
Image settings	Saturation, contrast, brightness, sharpness, Forensic WDR: up to 120 dB depending on scene, white balance, day/night threshold, exposure mode, compression, dynamic text and image overlay, exposure control, noise reduction, fine tuning of behavior at low light, polygon privacy masks
Network	
Security	Password protection, IP address filtering, HTTPS ^a encryption, IEEE 802.1X ^a network access control, digest authentication, user access log, centralized certificate management, brute force delay protection, signed firmware
Supported protocols	IPv4/v6, ICMPv4/ICMPv6, HTTP, HTTP/2, HTTPS ^a , TLS ^a , QoS Layer 3 DiffServ, FTP, SFTP, CIFS/SMB, SMTP, mDNS (Bonjour), UPnP ^b , SNMP v1/v2c/v3 (MIB-II), DNS/DNSv6, DDNS, NTP, RTSP, RTP, TCP, UDP, IGMPv1/v2/v3, RTCP, ICMP, DHCPv4/v6, ARP, SOCKS, SSH, LLDP, CDP, MQTT v3.1.1, Syslog, Link-Local address (ZeroConf)
System integration	
Application Programming Interface	Open API for software integration, including VAPIX [®] and AXIS Camera Application Platform; specifications at axis.com One-Click Cloud Connection ONVIF [®] Profile G, ONVIF [®] Profile S and ONVIF [®] Profile T, specification at onvif.org
Event triggers	Analytics, edge storage events, shock detection MQTT subscribe
Event actions	Day/night mode, overlay text, video recording to edge storage, pre- and post-alarm video buffering, send SNMP trap File upload: FTP, SFTP, HTTP, HTTPS network share, email Notification: email, HTTP, HTTPS TCP MQTT publish
Data streaming	Event data
Built-in installation aids	Pixel counter, Leveling guide
Analytics	
Applications	Included AXIS Motion Guard, AXIS Fence Guard, AXIS Loitering Guard AXIS Video Motion Detection, active tampering alarm Support for AXIS Camera Application Platform enabling installation of third-party applications, see axis.com/acap
General	
Casing	IP66-rated, powdercoated aluminum chassis Color: Red/silver

Prepared for American Petroleum Institute (API) DROP compliance, with additional safety wire for US offshore installations
Casing manufactured and certified by Spectrum Camera Solutions, LLC
US Patent 9917428

Sustainability	PVC free
Memory	1 GB RAM, 512 MB Flash
Power	Power over Ethernet (PoE) IEEE 802.3af/802.3at Type 1 Class 3, typical 7 W, max 12.9 W
Connectors	M20x1.5 cable entry Terminal block connector for 10BASE-T/100BASE-TX PoE
Storage	Support for microSD/microSDHC/microSDXC card Support for SD card encryption (AES-XTS-Plain64 256bit) Support for recording to network-attached storage (NAS) For SD card and NAS recommendations see axis.com
Operating conditions	-20 °C to 55 °C (-4 °F to 131 °F) Humidity 10–100% RH (condensing)
Storage conditions	-40 °C to 65 °C (-40 °F to 149 °F)
Approvals	EMC EN 55032 Class A, FCC Part 15 Subpart B Class A, ICES-003 Class A, VCCI Class A, RCM AS/NZS CISPR 32 Class A, EN 55024, EN 61000-6-1, EN 61000-6-2 Environment IEC 60068-2-1, IEC 60068-2-2, IEC 60068-2-6, IEC 60068-2-14, IEC 60068-2-27, IEC 60068-2-78, ANSI/IEC/CAN/CSA-C22.2 60529 IP66, NEMA 250 Type 4X Explosion ANSI/ISA/EN/IEC/CAN/CSA-C22.2 60079-0, ANSI/UL/EN/IEC/CAN/CSA-C22.2 60079-1, ANSI/UL/IEC/CAN/CSA-C22.2 60079-31
Certifications	USA and Canada: Class I Division 1 Groups B, C, D T6, Ta = -20 °C to 55 °C, Type 4X, IP66 Class II/III Division 1 Groups E, F, G T6, Ta = -20 °C to 55 °C, Type 4X, IP66 Class I, Zone 1 AEx/Ex db IIB+H2 T6 Gb, Ta = -20 °C to 55 °C, Type 4X, IP66 Zone 21, AEx/Ex tb IIIC T85°C Db, Ta = -20 °C to 55 °C, Type 4X, IP66 Certificate number: FM17US0156X and FM18CA0103X ATEX: II 2 G Ex db IIB+H2 T6 Gb Ta = -20 °C to 55 °C, IP66 II 2 D Ex tb IIIC Db T85°C Ta = -20 °C to 55 °C, IP66 Certificate number: FM18ATEX0057X IECEx: Ex db IIB+H2 T6 Gb Ta = -20 °C to 55 °C, IP66 Ex tb IIIC Db T85°C Ta = -20 °C to 55 °C, IP66 Certificate number: FMG18.0020X INMETRO: Ex db IIB+H2 T6 Gb Ta = -20 °C to 50 °C, IP66 Ex tb IIIC Db T85°C Ta = -20 °C to 50 °C, IP66 Certificate number: NCC 20.0083 X
Dimensions	ø 8.6 in (218 mm) Height: 15.9 in (404 mm)
Weight	19 lb (8.6 kg)
Mounting height	Recommended: 4–15 m
Included accessories	Installation guide, Windows decoder 1-user license, AXIS Surveillance microSDXC Card 128 GB
Optional accessories	Wall Mount D101-A XF (for best panoramic view away from walls, or for ceilings), Wall Mount D201-S XPT, Pole Mount D201-S XPT, Corner Mount D201-S XPT For more accessories, see axis.com
Video management software	AXIS Companion ^b , AXIS Camera Station, video management software from Axis Application Development Partners available on axis.com/vms
Languages	English, German, French, Spanish, Italian, Russian, Simplified Chinese, Japanese, Korean, Portuguese, Traditional Chinese

Warranty 5-year warranty, see axis.com/warranty

a. *This product includes software developed by the OpenSSL Project for use in the OpenSSL Toolkit. (openssl.org), and cryptographic software written by Eric Young (eay@cryptsoft.com).*

b. *Compatible with 7.5 MP (dewarped) only.*

Environmental responsibility:

axis.com/environmental-responsibility

For more information please contact:



BOCK OPTRONICS INC.
14 Steinway Blvd., Unit 7
Toronto, Ontario M9W 6M6

Tel: (416) 674-2804
sales@bockoptronics.ca
www.bockoptronics.ca

ExCam XPT Q6075 Explosion-Protected PTZ Camera

Real-time movement and control in hazardous areas

Certified (ATEX, IECEx, EAC Ex and IA) for use in potentially combustible environments, ExCam XPT Q6075 offers HDTV 1080p and 40x optical zoom for great overview and excellent detail. Featuring Axis Lightfinder 2.0, it captures images with more realistic and saturated colors and sharper images of moving objects. It includes autotracking 2 with click and track functionality for active object tracking, and orientation aid with support for dynamic overlays for quick orientation. Enhanced security features such as signed firmware and secure boot ensure the integrity and authenticity of the firmware. Furthermore, Axis Zipstream with support for H.264/H.265 significantly lowers bandwidth and storage requirements.

- > **HDTV 1080p at 50/60 fps, with 40x optical zoom**
- > **Axis Lightfinder 2.0**
- > **Autotracking 2 and orientation aid**
- > **TPM, FIPS 140–2 level 2 certified**
- > **ATEX, IECEx, EAC Ex and IA; Zone 1, 21**



ExCam XPT Q6075 Explosion-Protected PTZ Camera

Camera	
Image sensor	1/2.8" progressive scan RGB CMOS
Lens	4.25-170 mm, F1.6-4.95 Horizontal field of view: 65.1°-2.0° (1080p) Vertical field of view: 39.1°-1.18° (1080p) Autofocus, auto-iris
Day and night	Automatically removable infrared-cut filter
Minimum illumination	Color: 0.1 lux at 30 IRE, F1.6 B/W: 0.002 lux at 30 IRE, F1.6 Color: 0.15 lux at 50 IRE, F1.6 B/W: 0.003 lux at 50 IRE, F1.6
Shutter speed	1/11000 s to 1/3 s
Pan/Tilt/Zoom	Pan: 360° endless, 0.05°-450°/s Tilt: 180°, 0.05°-450°/s Zoom: 40x optical, 12x digital, Total 480x zoom E-flip, 256 preset positions, tour recording (max 10, max duration 16 minutes each), guard tour (max 100), control queue, on-screen directional indicator, orientation aid PTZ, set new pan 0°, adjustable zoom speed, focus recall
System on chip (SoC)	
Model	ARTPEC-7
Memory	1024 MB RAM, 512 MB Flash
Video	
Video compression	H.264 (MPEG-4 Part 10/AVC) Baseline, Main and High Profiles H.265 (MPEG-H Part 2/HEVC) Main Profile Motion JPEG
Resolution	HDTV 1080p 1920x1080 to 320x180
Frame rate	Up to 50/60 fps (50/60 Hz) in HDTV 1080p
Video streaming	Multiple, individually configurable streams in H.264, H.265 and Motion JPEG Axis Zipstream technology in H.264 and H.265 Controllable frame rate and bandwidth VBR/ABR/MBR H.264 and H.265
Image settings	Manual shutter time, compression, color, brightness, sharpness, WDR: up to 120 dB depending on scene, white balance, exposure control, exposure zones, fine tuning of behavior at low light, rotation: 0°, 180°, text and image overlay, polygon privacy masks, image freeze on PTZ, automatic defog, backlight compensation, highlight compensation, electronic image stabilization
Network	
Security	Password protection, IP address filtering, HTTPS ^a encryption, IEEE 802.1x (EAP-TLS) ^a network access control, digest authentication, user access log, centralized certificate management, brute force delay protection, signed firmware, secure boot, protection of cryptographic keys with FIPS 140-2 certified TPM 2.0 module
Supported protocols	IPv4, IPv6 USGv6, ICMPv4/ICMPv6, HTTP, HTTP/2, HTTPS ^a , TLS ^a , QoS Layer 3 DiffServ, FTP, SFTP, CIFS/SMB, SMTP, mDNS (Bonjour), UPnP [®] , SNMP v1/v2c/v3 (MIB-II), DNS/DNSv6, DDNS, NTP, RTSP, RTP, SRTP, TCP, UDP, IGMPv1/v2/v3, RTCP, ICMP, DHCPv4/v6, ARP, SOCKS, SSH, NTCIP, LLDP, CDP, MQTT v3.1.1, Syslog, Link-Local address (ZeroConf)
System integration	
Application Programming Interface	Open API for software integration, including VAPIX [®] and AXIS Camera Application Platform; specifications at axis.com One-click cloud connection ONVIF [®] Profile G, ONVIF [®] Profile S, and ONVIF [®] Profile T, specification at onvif.org
Event conditions	Device status: above operating temperature, above or below operating temperature, below operating temperature, fan failure, IP address removed, network lost, new IP address, shock detected, storage failure, system ready, within operating temperature Edge storage: recording ongoing, storage disruption I/O: manual trigger MQTT subscribe PTZ: PTZ malfunctioning, PTZ movement, PTZ preset position reached, PTZ ready Scheduled and recurring: scheduled event

	Video: live stream open
Event actions	Day/night mode, overlay text, video recording to edge storage, pre- and post-alarm video buffering, send SNMP trap PTZ: PTZ preset, start/stop guard tour File upload via FTP, SFTP, HTTP, HTTPS network share and email Notification via email, HTTP, HTTPS and TCP MQTT publish
Data streaming	Event data
Built-in installation aids	Pixel counter, leveling guide
Analytics	
Applications	Included AXIS Motion Guard, AXIS Fence Guard, AXIS Loitering Guard, autotracking 2, active gatekeeper Basic analytics (not to be compared with third-party analytics): object removed, enter/exit detector, object counter Support for AXIS Camera Application Platform enabling installation of third-party applications, see axis.com/acap
General	
Casing	IP66- and IP68-rated, ASTM 316L (EN 1.4404) stainless steel casing for maximum corrosion protection ^b
Sustainability	PVC free
Power	Camera: Power over Ethernet Plus (PoE+) IEEE 802.3at, Type 2 Class 4, typical 11 W, max 17.1 W AXIS T8154 60 W SFP Midspan: 100-240 V AC, max 74 W Heaters: 24 V DC, max 60 W at -50 °C (-58 °F). Heaters shall be powered when operated in temperatures below 10 °C.
Connectors	EXTB-3 Junction Box ExCam: 10 terminal clamps UT 2.5 2 conductor terminal USLKG 5.3 3 M20 cable entries
Storage	Pre-installed AXIS Surveillance microSDXC Card 128 GB Support for SD card encryption (AES-XTS-Plain64 256bit) Support for recording to network-attached storage (NAS) For SD card and NAS recommendations see axis.com
Operating conditions	-50 °C to 50 °C (-58 °F to 122 °F) (Intermittent up to 60 °C/140 °F) Humidity 10-100% RH (condensing)
Storage conditions	-40 °C to 65 °C (-40 °F to 149 °F)
Approvals	EMC EN 55032 Class A, EN 61000-3-2, EN 61000-3-3, EN 61000-4-2, EN 61000-4-3, EN 61000-4-4, EN 61000-4-5, EN 61000-4-6, EN 61000-4-8, EN 61000-4-11, EN 61000-6-2, EN 62479 Midspan EN 60950-1, GS, UL, cUL, CE, FCC, VCCI, CB, KCC, UL-AR Explosion EN/IEC 60079-0:2012, EN/IEC 60079-1:2007, EN/IEC 60079-31:2009, TR CU 012/2011, GOST R IEC 60079-0-2011, GOST R IEC 60079-1-2011, GOST R IEC 60079-31-2010
Certifications	Model key: T08-TNXCD-LLH-005.A-T ATEX: II 2G Ex d IIC T6 Gb, II 2D Ex tb IIIC T80°C Db Certificate: TÜV 18 ATEX 8218X IECEx: Ex d IIC T6 Gb, Ex tb IIIC T80°C Db Certificate: IECEx TUR 18.0023X EAC Ex: Ex d IIC T6 Gb, Ex tb IIIC T80°C Db Series: T8, Model: T08-TNXCD. Certificate: TC RU C-DE.AE.61.B.00381/19 IA: Ex d IIC T6 Gb, Ex tb IIIC T80°C Db Certificate: MASC MS/18-3256X EXTB-3 Junction Box ExCam: Model key: T12-3M20 ATEX: II 2 G Ex eb IIC T5 Gb, Ex II 2 D Ex tb IIIC T95°C Db IP66 Certificate: PTB 99 ATEX 3103 IECEx: Ex e IIC T5 Gb, Ex IIIC T95°C Db IP66 Certificate: IECEx PTB 06.0026 EAC Ex: 1Ex e IIC T5 Gb X, Ex tb IIIC T95°C Db X Certificate: RU C-DE.AA71.B.00120
Dimensions	Height: 378 mm (14 7/8 in), ø 195 mm (7 11/16 in)

Weight	20 kg (44.1 lb)
Included accessories	Pre-connected 5 m (16 ft) ASKDP03-T Armoured Cable ExCam, AXIS T8154 60 W SFP Midspan, EXTB-3 Junction Box ExCam, AXIS Surveillance Card 128 GB, Installation guide, Windows® decoder 1-user license
Optional accessories	Wall mount ExCam XPT, Pole mount ExCam XPT Ex Connection Rail 4-port PoE Ex Connection Rail 8-port PoE SKDP03-T Cables ExCam 10 m (33 ft), 25 m (82 ft), 95 m (312 ft) ASKDP03-T Armoured Cable ExCam 10 m (33 ft), 25 m (82 ft), 95 m (312 ft)
Video management software	AXIS Companion, AXIS Camera Station, video management software from Axis Application Development Partners available on axis.com/vms

Languages English, German, French, Spanish, Italian, Russian, Simplified Chinese, Japanese, Korean, Portuguese, Traditional Chinese

Warranty 5-year warranty, see axis.com/warranty

- a. *This product includes software developed by the OpenSSL Project for use in the OpenSSL Toolkit. (openssl.org), and cryptographic software written by Eric Young (eay@cryptsoft.com).*
- b. *The camera has been developed in cooperation with SAMCON Prozessleittechnik GmbH*

Environmental responsibility:

axis.com/environmental-responsibility

For more information please contact:



BOCK OPTRONICS INC.
14 Steinway Blvd., Unit 7
Toronto, Ontario M9W 6M6

Tel: (416) 674-2804
sales@bockoptronics.ca
www.bockoptronics.ca



D201-S XPT Q6075 Explosion-Protected PTZ Camera

Real-time movement and control in hazardous areas

Certified (cFMus, ATEX, IECEx, INMETRO) for use in potentially combustible environments, D201-S XPT Q6075 offers HDTV 1080p and 40x optical zoom for great overview and excellent detail. Featuring Axis Lightfinder 2.0, it captures images with more realistic and saturated colors and sharper images of moving objects. It includes autotracking 2 with click and track functionality for active object tracking, and orientation aid with support for dynamic overlays for quick orientation. Built-in cybersecurity features such as signed firmware and secure boot ensure the integrity and authenticity of the firmware. Furthermore, Axis Zipstream with support for H.264/H.265 significantly lowers bandwidth and storage requirements.

- > **HDTV 1080p at 50/60 fps, with 40x optical zoom**
- > **Axis Lightfinder 2.0**
- > **Autotracking 2 and orientation aid**
- > **TPM, FIPS 140-2 level 2 certified**
- > **cFMus, ATEX, IECEx, INMETRO**



D201-S XPT Q6075 Explosion-Protected PTZ Camera

Camera	
Image sensor	1/2.8" progressive scan RGB CMOS
Lens	4.25-170 mm, F1.6-4.95 Horizontal field of view: 65.1°-2.0° (1080p) Vertical field of view: 39.1°-1.18° (1080p) Autofocus, auto-iris
Day and night	Automatically removable infrared-cut filter
Minimum illumination	Color: 0.1 lux at 30 IRE, F1.6 B/W: 0.002 lux at 30 IRE, F1.6 Color: 0.15 lux at 50 IRE, F1.6 B/W: 0.003 lux at 50 IRE, F1.6
Shutter speed	1/11000 s to 1/3 s
Pan/Tilt/Zoom	Pan: 360° endless, 0.05°-450°/s Tilt: 220°, 0.05°-450°/s Zoom: 40x optical, 12x digital, Total 480x zoom E-flip, 256 preset positions, tour recording (max 10, max duration 16 minutes each), guard tour (max 100), control queue, on-screen directional indicator, orientation aid PTZ, set new pan 0°, adjustable zoom speed, focus recall
System on chip (SoC)	
Model	ARTPEC-7
Memory	1024 MB RAM, 512 MB Flash
Video	
Video compression	H.264 (MPEG-4 Part 10/AVC) Baseline, Main and High Profiles H.265 (MPEG-H Part 2/HEVC) Main Profile Motion JPEG
Resolution	HDTV 1080p 1920x1080 to 320x180
Frame rate	Up to 50/60 fps (50/60 Hz) in HDTV 1080p
Video streaming	Multiple, individually configurable streams in H.264, H.265 and Motion JPEG Axis Zipstream technology in H.264 and H.265 Controllable frame rate and bandwidth VBR/ABR/MBR H.264 and H.265
Image settings	Manual shutter time, compression, color, brightness, sharpness, WDR: up to 120 dB depending on scene, white balance, exposure control, exposure zones, fine tuning of behavior at low light, rotation: 0°, 180°, dynamic text and image overlay, polygon privacy masks, image freeze on PTZ, automatic defog, backlight compensation, highlight compensation Scene profiles: forensic, indoor, outdoor, traffic overview
Network	
Security	Password protection, IP address filtering, HTTPS ^a encryption, IEEE 802.1x (EAP-TLS) ^a network access control, digest authentication, user access log, centralized certificate management, brute force delay protection, signed firmware, secure boot, protection of cryptographic keys with FIPS 140-2 certified TPM 2.0 module
Supported protocols	IPv4, IPv6 USGv6, ICMPv4/ICMPv6, HTTP, HTTPS ^a , HTTP/2, TLS ^a , QoS Layer 3 DiffServ, FTP, SFTP, CIFS/SMB, SMTP, mDNS (Bonjour), UPnP ^b , SNMP v1/v2c/v3 (MIB-II), DNS/DNSv6, DDNS, NTP, RTSP, RTP, SRTP, TCP, UDP, IGMP, RTCP, ICMP, DHCPv4/v6, ARP, SOCKS, SSH, NTCIP, LLDP, CDP, MQTT v3.1.1, Syslog, Link-Local address (ZeroConf)
System integration	
Application Programming Interface	Open API for software integration, including VAPIX [®] and AXIS Camera Application Platform; specifications at axis.com One-click cloud connection ONVIF [®] Profile G, ONVIF [®] Profile M, ONVIF [®] Profile S and ONVIF [®] Profile T, specification at onvif.org
Event conditions	Device status: above operating temperature, above or below operating temperature, below operating temperature, fan failure, IP address removed, network lost, new IP address, shock detected, storage failure, system ready, within operating temperature Edge storage: recording ongoing, storage disruption I/O: manual trigger, virtual input MQTT subscribe PTZ: PTZ malfunctioning, PTZ movement, PTZ preset position reached, PTZ ready Scheduled and recurring: scheduled event

Video: live stream open	
Event actions	Day/night mode, overlay text, video recording to edge storage, pre- and post-alarm video buffering, send SNMP trap PTZ: PTZ preset, start/stop guard tour File upload via FTP, SFTP, HTTP, HTTPS network share and email Notification via email, HTTP, HTTPS and TCP MQTT publish
Data streaming	Event data
Built-in installation aids	Pixel counter, leveling guide
Analytics	
Applications	Included AXIS Motion Guard, AXIS Fence Guard, AXIS Loitering Guard, autotracking 2, active gatekeeper Basic analytics (not to be compared with third-party analytics): object removed, enter/exit detector, object counter Support for AXIS Camera Application Platform enabling installation of third-party applications, see axis.com/acap
General	
Casing	IP66/67-rated, electropolished EN 1.4404 (ASM 316L) stainless steel casing for maximum corrosion protection Prepared for American Petroleum Institute (API) DROP compliance, with additional safety wire for US offshore installations Casing manufactured and certified by Spectrum Camera Solutions, LLC US Patents 9917428, D858611
Sustainability	PVC free
Power	Axis High PoE 60 W SFP midspan: 100-240 V AC, max 66.1 W Camera consumption: typical 14 W, max 51 W
Connectors	8-position terminal block for PoE + ground, one M20 conduit entry
Storage	Pre-installed AXIS Surveillance microSDXC Card 128 GB Support for SD card encryption (AES-XTS-Plain64 256bit) Support for recording to network-attached storage (NAS) For SD card and NAS recommendations see axis.com
Operating conditions	-20 °C to 55 °C (-4 °F to 131 °F) Arctic Temperature Control: Start-up at -20 °C (-4 °F) Humidity 10-100% RH (condensing)
Storage conditions	-40 °C to 65 °C (-40 °F to 149 °F)
Approvals	EMC EN 55032 Class A, EN 55024, EN 61000-3-2, EN 61000-3-3, EN 61000-6-2, FCC Part 15 Subpart B Class A, ICES-003 Class A, VCCI Class A, RCM AS/NZS CISPR 32 Class A Safety IEC/EN/UL 60950-1, IEC/EN/UL 60950-22, CAN/CSA-C22.2 No. 60950-22, EN 62368-1:2014/A11:2017, EN 60950-22:2017, IEC 62368-1:2014, IEC 60950-22, UL 62368-1:2014, UL 60950-22:2017, CAN/CSA C22.2 No.62368-1-14, CSA CAN/CSA C22.2 No. 60950-22-17 Environment ANSI/IEC/CAN/CSA-C22.2 60529 IP66/67, NEMA 250 Type 4X Network NIST SP500-267 Explosion ANSI/ISA/EN/IEC/CAN/CSA-C22.2 60079-0, ANSI/UL/EN/IEC/CAN/CSA-C22.2 60079-1, ANSI/UL/IEC/EC/CAN/CSA-C22.2 60079-31
Certifications	USA (Divisions): Class I Division 1 Groups B,C,D T6, type 4X, IP66/67 Class II/III, Division 1, Groups E,F,G T6 Ta = -20 °C to 55 °C Certificate: FM17US0156X USA and Canada (Zones): Class I, Zone 1, AEx/Ex db IIB+H2 T6 Gb Ta -20 °C to 55 °C, Type 4X, IP66/67 Zone 21, AEx/Ex tb IIIC T85 °C Db Ta = -20 °C to 55 °C, Type 4X, IP66/67 Certificate: FM17US0156X and FM18CA0103X ATEX:

II 2 G Ex db IIB+H2 T6 Gb Ta = -20 °C to 55 °C, IP66/67
 II 2 D Ex tb IIIC T85 °C Db Ta = -20 °C to 55 °C, IP66/67
 Certificate: FM18ATEX0057X
 IECEX:
 Ex db IIB+H2 T6 Gb Ta = -20 °C to 55 °C, IP66/67
 Ex tb IIIC T85 °C Db Ta = -20 °C to 55 °C, IP66/67
 Certificate: FMG 18.0020X
 INMETRO:
 Ex db IIB+H2 T6 Gb Ta = -20 °C to 55 °C, IP66/67
 Ex tb IIIC Db T85 °C Ta = -20 °C to 55 °C, IP66/67
 Certificate number: NCC 20.0083 X

Dimensions	ø 8.6 in (218 mm) Height: 15.9 in (404 mm)
Weight	68 lb (28 kg)
Included accessories	Installation guide, Windows® decoder 1-user license, Axis High PoE 60 W SFP midspan 1-port, AXIS Surveillance Card 128 GB, two hex keys (5 and 6 mm), thread adapter M20 to 3/4" NPT

Optional accessories	Wall Mount D201-S XPT, Wall Mount D101-A XF, Pole Mount D201-S XPT, Corner Mount D201-S XPT, AXIS T8310 Video Surveillance Control Board, multi-user decoder license pack For more accessories, see axis.com
Video management software	AXIS Companion, AXIS Camera Station, video management software from Axis Application Development Partners available on axis.com/vms
Languages	English, German, French, Spanish, Italian, Russian, Simplified Chinese, Japanese, Korean, Portuguese, Traditional Chinese
Warranty	Axis 3-year warranty and AXIS Extended Warranty option, see axis.com/warranty

- a. *This product includes software developed by the OpenSSL Project for use in the OpenSSL Toolkit. (openssl.org), and cryptographic software written by Eric Young (eay@cryptsoft.com).*

Environmental responsibility:

axis.com/environmental-responsibility

For more information please contact:



BOCK OPTRONICS INC.
 14 Steinway Blvd., Unit 7
 Toronto, Ontario M9W 6M6

Tel: (416) 674-2804
sales@bockoptronics.ca
www.bockoptronics.ca

ExCam XF M3016 Explosion-Protected Network Camera

Small form-factor for process monitoring in hazardous environments

ExCam XF M3016 comes enclosed in a stainless steel explosion-protected housing and is certified (ATEX/IECEX/EAC Ex/IA) for use in potentially combustible zones. This lightweight and robust fixed box camera features Wide Dynamic Range (WDR), a wide field-of-view and great 3 MP image quality at up to 30 fps. It offers easy one-person installation and thanks to its compact design, it easily fits wherever you need it. It's powered by Power over Ethernet (PoE) and includes a pre-connected 5 m (16 ft) non-armored cable. Furthermore, Axis Zipstream with support for H.264 and H.265 significantly lowers bandwidth and storage requirements.

- > **3 MP at 30 fps, wide field-of-view, and WDR**
- > **Lightweight and compact**
- > **Powered by PoE with non-armored cable**
- > **ATEX, IECEX, EAC Ex, and IA**
- > **Zones 1, 2, 21, 22; Groups IIC, IIIC**



For more information please contact:



BOCK OPTONICS INC.
14 Steinway Blvd., Unit 7
Toronto, Ontario M9W 6M6

Tel: (416) 674-2804
sales@bockoptronics.ca
www.bockoptronics.ca

ExCam XF M3016 Explosion-Protected Network Camera

Camera		Sustainability	PVC free
Image sensor	Fixed focus, fixed iris 1/3" progressive scan RGB CMOS	Memory	512 MB RAM, 512 MB Flash
Lens	2.8 mm, F2.0 4:3 aspect ratio: Horizontal field of view: 69°, vertical field of view: 52° 16:9 aspect ratio: Horizontal field of view: 92°, vertical field of view: 52°	Power	Power over Ethernet (PoE) IEEE 802.3af/802.3at Type 1 Class 1, typical 2.9 W, max 3.8 W
Minimum illumination	0.4 lux at 50 IRE F2.0	Connectors	5 m (16 ft) shielded cable for network (Cat 6) with RJ45 10BASE-T/100BASE-TX PoE
Shutter speed	1/32500 s to 1/5 s	Storage	Pre-installed AXIS Surveillance microSDXC Card 64 GB Support for SD card encryption Support for recording to network-attached storage (NAS) For SD card and NAS recommendations see axis.com
Video		Operating conditions	-5 °C to 40 °C (23 °F to 104 °F) Maximum temperature (intermittent): 50 °C (122 °F) Humidity 10-100% RH (condensing)
Video compression	H.264 (MPEG-4 Part 10/AVC) Main and High Profiles H.265 (MPEG-H Part 2/HEVC) Main Profile Motion JPEG	Storage conditions	-40 °C to 65 °C (-40 °F to 149 °F) Humidity 5-95% RH (non-condensing)
Resolution	2016x1512 to 320x240 (4:3) or 2304x1296 to 640x360 (16:9)	Approvals	EMC EN 55032 Class B, EN 61000-6-2 Safety IS 13252 Environment IEC 60068-2-1, IEC 60068-2-2, IEC 60068-2-6, IEC 60068-2-14, IEC 60068-2-27, IEC 60068-2-78, IEC/EN 60529 IP68 Explosion EN/IEC/GOST/SANS 60079-0, EN/IEC/GOST/SANS 60079-1, EN/IEC/GOST/SANS 60079-31 Network NIST SP500-267
Frame rate	25/30 fps with power line frequency 50/60 Hz	Certifications	Model key: T08-VA.1.2.K1.BOR-N.N-005.N-P-090 ATEX: II 2 G Ex db IIC T6 Gb, II 2 D Ex tb IIIC T80 °C Db Certificate: TÜV 18 ATEX 8218X IECEX: Ex db IIC T6 Gb, Ex tb IIIC T80 °C Db Certificate: TUR 18.0023X EAC Ex: 1Ex db IIC T6 Gb, Ex tb IIIC T80 °C Db Series: T8, Model: T08-VA1.2. Certificate: TC RU C-DE.AB61.B.00381/19 IA: Ex db IIC T6 Gb, Ex tb IIIC T80 °C Db Certificate: MASC MS/18-3256X PESO: Ex db IIC T6 Gb Certificate: A/P/HQ/KA/104/5735
Video streaming	Multiple, individually configurable streams in H.264, H.265 and Motion JPEG Axis Zipstream technology in H.264 and H.265 Controllable frame rate and bandwidth VBR/MBR H.264/H.265	Dimensions	179 x 79 x 96 mm (7.0 x 3.1 x 3.8 in)
Multi-view streaming	2 individually cropped out view areas in full frame rate	Weight	2.7 kg (5.9 lb) including cable
Image settings	Compression, color, brightness, sharpness, contrast, local contrast, white balance, exposure control, text and image overlay, mirroring of images, privacy masks WDR: up to 100 dB depending on scene Rotation: 0°, 90°, 180°, 270° including Corridor Format	Included accessories	Installation guide, Windows® decoder 1-user license, AXIS Surveillance microSDXC Card 64 GB
Network		Optional accessories	Wall Mount ExCam XF M30, Pole Mount ExCam XF, EXTB-3 Junction Box ExCam, Non-armored cables ExCam, 10, 25, 95 m (33, 82, 312 ft), Armored cables ExCam 10, 25, 95 m (33, 82, 312 ft), Ex Connection Rail 4-port PoE PS 24, Ex Connection Rail 8-port PoE PS 24, Weathershield ExCam XF M30 For more accessories, see axis.com
Security	Password protection, IP address filtering, HTTPS ^a encryption, IEEE 802.1X (EAP-TLS) ^a network access control, digest authentication, user access log, centralized certificate management, brute force delay protection, signed firmware	Video management software	AXIS Companion, AXIS Camera Station, video management software from Axis Application Development Partners available at axis.com/vms
Supported protocols	IPv4, IPv6 USGv6, HTTP, HTTPS ^a , SSL/TLS ^a , QoS Layer 3 DiffServ, FTP, SFTP, CIFS/SMB, SMTP, Bonjour, UPnP™, SNMP v1/v2c/v3 (MIB-II), DNS, DynDNS, NTP, RTSP, RTP, TCP, UDP, IGMPv1/v2/v3, RTCP, ICMP, DHCP, ARP, SOCKS, SSH, LLDP, MQTT v3.1.1	Languages	English, German, French, Spanish, Italian, Russian, Simplified Chinese, Japanese, Korean, Portuguese, Traditional Chinese
System integration		Warranty	5-year warranty, see axis.com/warranty
Application Programming Interface	Open API for software integration, including VAPIX® and AXIS Camera Application Platform; specifications at axis.com One-click cloud connection ONVIF® Profile G, ONVIF® Profile S, and ONVIF® Profile T, specification at onvif.org	a. This product includes software developed by the OpenSSL Project for use in the OpenSSL Toolkit. (www.openssl.org), and cryptographic software written by Eric Young (ey@cryptsoft.com).	
Analytics	Included AXIS Video Motion Detection, active tampering alarm Support for AXIS Camera Application Platform enabling installation of third-party applications, see axis.com/acap	Environmental responsibility: axis.com/environmental-responsibility	
Event triggers	Analytics, virtual inputs through API, edge storage events		
Event actions	Record video: SD card and network share Upload of images or video clips: FTP, SFTP, HTTP, HTTPS, network share, and email Pre- and post-alarm video or image buffering for recording or upload Notification: email, HTTP, HTTPS, TCP, and SNMP trap Overlay text		
Data streaming	Event data		
Built-in installation aids	Pixel counter		
General			
Casing	IP68-rated, EN 1.4404 (ASTM 316L) stainless steel casing for maximum corrosion protection Casing manufactured and certified by Samcon Prozesstechnik GmbH, www.samcon.eu		

XP40-Q1942 Explosion-Protected PT Thermal Network Camera

Thermal camera for hazardous areas

XP40-Q1942 Explosion-Protected PT Thermal Network Camera is suitable for onshore, offshore, marine and heavy industrial environments. It features a 316L stainless steel housing certified for hazardous areas according to for example ATEX, IECEx and UL. The housing prevents any inside sparks or explosions from escaping and igniting gases or dust in the surrounding air. The thermal camera accurately detects, promptly verifies, and then acts upon events of all kinds in conditions, ranging from pitch darkness to glaring sunlight. The network camera offers a high level of integration with other equipment, such as access control and fire alarms.

- > **Stainless steel (SAE 316L) housing**
- > **VGA thermal resolution**
- > **Reliable detection and fast verification**
- > **Continuous 360° pan, ±90° tilt**
- > **Wide temperature range**



XP40-Q1942 Explosion-Protected PT Thermal Network Camera

Models	XP40-Q1942 XP40-Q1942 -60 C XP40-Q1942 -50 C UL XP40-Q1942 -50 C 110 V UL All models are available in different versions depending on the regional requirements for hazardous equipment certification.	Max consumption, 24 V AC: 100 W XP40-Q1942 -50 C 110 V UL: Max consumption, 110 V AC: 114 W
Certification part code	XP40-Q1942/XP40-Q1942 -60 C: 1410-10-TI-50/2420-01 Supplied in 1410 series explosion-protected housing with 2420 series pan-tilt motor. XP40-Q1942 -50 C UL/XP40-Q1942 -50 C 110 V UL: OXALIS-UL1410-10-TI-50/2420-01 Supplied in UL1410 series explosion-protected housing with UL2420 series pan-tilt motor.	Connectors XP40-Q1942 models: One M25 cable entry for cable conduits XP40-Q1942 UL models: Two 3/4" NPT conduit entries
Camera		Storage Support for microSD/microSDHC/microSDXC card Support for recording to network-attached storage (NAS) For SD card and NAS recommendations see axis.com
Image sensor	Uncooled Micro bolometer 640x480, pixel size: 17 µm Spectral range: 8–14 µm	Operating conditions Temperatures depend on the certifications. See Certifications section: XP40-Q1942: -40 °C to 70 °C (-40 °F to 158 °F) XP40-Q1942 -60 C: -60 °C to 40 °C (-76 °F to 104 °F) XP40-Q1942 -50 C UL: -50 °C to 70 °C (-58 °F to 158 °F) XP40-Q1942 -50 C 110 V UL: -50 °C to 70 °C (-58 °F to 158 °F) Humidity 10–100% RH (condensing)
Lens	Athermalized 19 mm, F1.23 Horizontal field of view: 32°	Storage conditions -40 °C to 65 °C (-40 °F to 149 °F)
Sensitivity	NETD < 50 mK	Approvals EMC EN 55022 Class A, EN 55024, EN 61000-6-1, EN 61000-6-2, FCC Part 15 Subpart B Class A, ICES-3(A)/NMB-3(A), RCM AS/NZS CISPR 22 Class A Safety EN/UL/CSA 60065 Environment IEC/EN 60529 IP66, IP67 Explosion IEC/EN/SANS/ABNT NBR 60079-0, IEC/EN/SANS/ABNT NBR/GOST 60079-1, IEC/EN/SANS/ABNT NBR/GOST 60079-31, GOST 31610.0, GB3836.1, GB3836.2, CAN/CSA-C22.2 No. 60079-0, CAN/CSA-C22.2 No. 60079-1, CSA-C22.2 No. 60065-03, CAN/CSA C22.2 No. 25, CAN/CSA C22.2 No. 30-M, UL 1203
Pan/Tilt	Pan: 360° endless, 0.1–45°/s Tilt: ±90°, 0.1–24°/s 64 preset positions, preset accuracy +/-0.1°, Guard Tour, Control queue	Certifications ATEX: II 2 G Ex db IIC T4 Gb -60°C ≤ Ta ≤ +70°C Gb, II 2 D Ex tb IIC T135°C Db IP66/67, Certificate: ITS16ATEX101021X IECEx: Ex db IIC T4 -60°C ≤ Ta ≤ +70°C Gb, Ex tb IIC T135°C Db IP66/67, Certificate: IECEx ITS 15.0068X Inmetro: IIC T4 Gb -60°C ≤ Ta ≤ +70°C Gb, IIC T135°C Db IP66/67, Certificate: UL-BR 17.0063X cLC CSA: Ex d IIC T4 -60°C ≤ Ta ≤ +60°C, Certificate: 11396-1S-CSA EAC: Ex db IIC T4 Gb -60°C ≤ Ta ≤ +70°C, Ex tb IIC T135°C Db IP66/67, Certificate: TCRUCGB.ГБ04.В00587 CCOE: Ex db IIC T4 Gb -60°C ≤ Ta ≤ +70°C, Ex tb IIC T135°C Db IP66/67, Certificate: P400546/1 CNEX: Ex db IIC T4 Gb -60°C ≤ Ta ≤ +70°C, Ex tb IIC T135°C Db IP66/67, Certificate: 17.1245X IA: Ex db IIC T4 Gb -60°C ≤ Ta ≤ +70°C, Ex tb IIC T135°C Db IP66/67, Certificate: S-XPL/17.0244X KCC: Ex d IIC T4 -60°C ≤ Ta ≤ +70°C, Ex tD A21 T135°C IP66/67 -60°C to +65°C, Certificate: 17-GA4B0-0351X, 17-GA4B0-0352X UL: Class I, Division 1, Groups B, C, D, T4+ -50°C to +70°C (-58°F to +158°F), Class II, Division 1, Groups E, F, G, IP67, Class 1 Zone 1 A Ex d IIB + Hydrogen T4, Certificate: 20170721-E477542
Video		Dimensions 475 x 512 x 480 mm (18 11/16 x 20 3/16 x 18 7/8 in)
Video compression	H.264 (MPEG-4 Part 10/AVC) Baseline, and Main profiles Motion JPEG	Weight 50 kg (110 lb)
Resolution	Sensor is 640x480. Image can be scaled up to 800x600 (SVGA).	Included accessories Sunshield, installation guide, Windows decoder 1-user license, AXIS Surveillance microSDXC™ Card 64 GB
Frame rate	Up to 8.3 fps	Optional accessories Ex Power Supply ATEX Ex Washer Tank Pressurized ATEX/IECEx, Ex Power Supply UL, Ex Cable ATEX/IECEx/EAC in various lengths, wall and pole stainless steel mounts Not all accessories are available for all certifications. For more accessories, see axis.com
Video streaming	At least three H.264 and Motion JPEG streams, simultaneous and individually configured in max. resolution in full frame rate Axis Zipstream technology in H.264 Controllable frame rate and bandwidth VBR/CBR H.264	Video management software AXIS Companion, AXIS Camera Station, Video management software from Axis' Application Development Partners available on axis.com/techsup/software
Image settings	Compression, mirroring of images, rotation, multiple palettes, brightness, sharpness, contrast, electronic image stabilization, automatic gain control, exposure zone, max gain, text and image overlay, privacy mask	Languages English, German, French, Spanish, Italian, Russian, Simplified Chinese, Japanese, Korean, Portuguese, Traditional Chinese
Network		Warranty 5-year warranty, see axis.com/warranty
Security	Password protection, IP address filtering, HTTPS ^a encryption, Digest authentication, User access log, Centralized Certificate Management	Export control This product is subject to export control regulations. You should always consult and comply with the regulations of the appropriate local export control authorities.
Supported protocols	IPv4, IPv6 USGv6, HTTP, HTTPS ^a , SSL/TLS ^a , QoS Layer 3 DiffServ, FTP, CIFS/SMB, SMTP, Bonjour, UPnP™, SNMP v1/v2c/v3 (MIB-II), DNS, DynDNS, NTP, RTP, TCP, UDP, IGMPv1/v2/v3, RTCP, ICMP, DHCP, ARP, SOCKS, SSH	
System integration		
Application Programming Interface	Open API for software integration, including VAPIX [®] and AXIS Camera Application Platform; specifications at axis.com AXIS Guardian with One-Click Connection One-click cloud connection ONVIF [®] Profile S and ONVIF [®] Profile G, specification at onvif.org	
Analytics	AXIS Video Motion Detection, Shock detection Support for AXIS Camera Application Platform, see axis.com/acap	
Event triggers	Analytics, Temperature, Time scheduled, Edge storage events	
Event actions	Overlay text, video recording to edge storage, pre- and post-alarm video buffering, send SNMP trap File upload via FTP, SFTP, HTTP, HTTPS, network share and email Notification via email, HTTP, HTTPS and TCP	
Data streaming	Event data	
Built-in installation aids	Pixel counter	
General		
Casing	IP66- and IP67- rated, electropolished SAE 316L stainless steel casing for maximum corrosion protection Germanium protective window	
Memory	512 MB RAM, 256 MB Flash	
Power	XP40-Q1942/XP40-Q1942 -60 C/XP40-Q1942 -50 C UL:	

a. This product includes software developed by the OpenSSL Project for use in the OpenSSL Toolkit. (www.openssl.org), and cryptographic software written by Eric Young (ey@cryptsoft.com).

Environmental responsibility:
axis.com/environmental-responsibility

For more information please contact:



BOCK OPTRONICS INC.
14 Steinway Blvd., Unit 7
Toronto, Ontario M9W 6M6

Tel: (416) 674-2804
sales@bockoptronics.ca
www.bockoptronics.ca

XP40-Q1785 Explosion-Protected PTZ Camera

First-class positioning camera for hazardous areas

XP40-Q1785 offers HDTV 1080p image quality up to 60 fps. It's certified (NEC, CEC, IECEx, ATEX and EAC Ex) for use in potentially combustible environments. Enclosed in a stainless steel housing with IP66/IP67 ratings, this positioning camera can withstand extreme temperatures from -60 °C to 60 °C (-76 °F to 140 °F). Featuring 32x optical zoom it provides continuous 360° pan and 180° tilt movement. This high-performance PTZ camera offers long-distance connections using fiber optics or Ethernet cabling. Plus, thanks to direct mains power input it's simple to install and there's no need for an external power supply.

- > **HDTV 1080p with 32x optical zoom**
- > **360° continuous pan and 180° tilt movement**
- > **Forensic WDR, Lightfinder and EIS**
- > **Ease of installation with fiber optics or Ethernet**
- > **NEC, CEC, IECEx, ATEX and EAC Ex**



XP40-Q1785 Explosion-Protected PTZ Camera

Models	XP40-Q1785 -40 C XP40-Q1785 -60 C XP40-Q1785 -40 C 230 V XP40-Q1785 -60 C 230 V XP40-Q1785 -40 C 230 V FO XP40-Q1785 -60 C 230 V FO XP40-Q1785 UL -50 C XP40-Q1785 UL -50 C 110 V XP40-Q1785 UL -50 C 110 V FO	File upload: FTP, SFTP, HTTP, HTTPS, network share and email Notification: email, HTTP, HTTPS, TCP and SNMP trap
Certification part code	All models supplied in 1410 series explosion-protected housing with 2420 series pan-tilt motor. XP40-Q1785 -40 C models, XP40-Q1785 -60 C models: 1410-25/2420-01 XP40-Q1785 UL -50 C models: OXALIS-UL1410-25/UL2420-01 All models supplied in 1410/2420-series explosion-protected housing manufactured and certified by Eaton MEDC Ltd., UK.	
Camera		
Image sensor	1/2.8" progressive scan RGB CMOS	
Lens	4.3-137 mm, F1.4-4.0 Horizontal field of view: 60°-2.3° Vertical field of view: 39°-1.3° Autofocus	
Minimum illumination	Color: 0.16 lux at 50 IRE F1.4 B/W: 0.03 lux at 50 IRE F1.4	
Shutter speed	1/66500 s to 1 s	
Pan/Tilt/Zoom	Pan: 360° endless, 0.1 - 45°/s Tilt: ±90°, 0.1 - 24°/s 32x optical zoom and 12x digital zoom, total 384x zoom 100 preset positions, preset accuracy +/-0.1°, Guard Tour, Driver selection, Control queue	
Video		
Video compression	H.264 (MPEG-4 Part 10/AVC) Baseline, and Main profiles Motion JPEG	
Resolution	1920x1080 HDTV 1080p to 160x90 Maximum pixel density with 32x optical zoom: 25 m (82 ft): 1912 px/m 50 m (164 ft): 956 px/m 250 m (820 ft): 191 px/m	
Frame rate	With WDR: Up to 25/30 fps (50/60 Hz) in all resolutions Without WDR: Up to 50/60 fps (50/60 Hz) in all resolutions	
Video streaming	Multiple, individually configurable streams in H.264 and Motion JPEG Axis Zipstream technology in H.264 Controllable frame rate and bandwidth VBR/MBR H.264	
Image settings	Saturation, contrast, brightness, sharpness, Forensic WDR, defogging, white balance, exposure mode, exposure zones, compression, mirroring of images, electronic image stabilization, barrel distortion correction, text and image overlay, dynamic text and image overlay, privacy masks Rotation: auto, 0°, 90°, 180°, 270° including Corridor Format Scene profiles: forensic, vivid, traffic overview, backlit entrance	
Network		
Security	Password protection, IP address filtering, HTTPS ^a encryption, IEEE 802.1X ^a network access control, digest authentication, user access log, centralized certificate management, signed firmware, brute force delay protection	
Supported protocols	IPv4, IPv6 USGv6, HTTP, HTTPS ^a , SSL/TLS ^a , QoS Layer 3 DiffServ, FTP, SFTP, CIFS/SMB, SMTP, Bonjour, UPnP [®] , SNMP v1/v2c/v3 (MIB-II), DNS, DynDNS, NTP, RTSP, RTP, SRTP, TCP, UDP, IGMPv1/v2/v3, RTCP, ICMP, DHCP, ARP, SOCKS, SSH, LLDP	
System integration		
Application Programming Interface	Open API for software integration, including VAPIX [®] and AXIS Camera Application Platform; specifications at axis.com AXIS Video Hosting System (AVHS) with One-Click Connection ONVIF [®] Profile G, ONVIF [®] Profile S, and ONVIF [®] Profile T, specification at onvif.org	
Event conditions	Analytics, edge storage events, virtual inputs through API, shock detection	
Event actions	Pre- and post-alarm video buffering	
Data streaming	Event data	
Built-in installation aids	Remote zoom, pixel counter, leveling assistant, autorotation	
Analytics		
Applications	Included AXIS Motion Guard, AXIS Fence Guard, AXIS Loitering Guard AXIS Video Motion Detection, active tampering alarm, gatekeeper Supported AXIS Perimeter Defender Support for AXIS Camera Application Platform enabling installation of third-party applications, see axis.com/acap	
General		
Casing	IP66- and IP67-rated, electropolished ASTM 316L (EN 1.4404) stainless steel casing for maximum corrosion protection	
Memory	1024 MB RAM, 512 MB Flash	
Power	Max consumption: 130 W Power input: 24 V AC, 110 V AC, or 230 V AC, depending on model	
Connectors	XP40-Q1785 models: One M25 conduit entry XP40-Q1785 UL models: Two 3/4" NPT conduit entries All models: Terminal connector for power and connection to optional washer tank. Network connectivity FO models: Simplex single mode 9/125 μm, SC connector, 10/100 Mb Other models: RJ45 for Ethernet	
Storage	Pre-installed AXIS Surveillance microSDXC Card 128 GB Support for SD card encryption Recording to network-attached storage (NAS) For SD card and NAS recommendations see axis.com	
Operating conditions	XP40-Q1785 -40 C models: -40 °C to 60 °C (-40 °F to 140 °F) XP40-Q1785 -60 C models: -60 °C to 40 °C (-76 °F to 104 °F) XP40-Q1785 UL models: -50 °C to 60 °C (-58 °F to 140 °F) Humidity 10-100% RH (condensing)	
Storage conditions	-40 °C to 65 °C (-40 °F to 149 °F) Humidity 5-95% RH (non-condensing)	
Approvals	EMC EN 61000-6-2, EN 61000-6-4, FCC Part 15 Subpart B Class A Environment IEC/EN 60529 IP66, IP67, DNVGL-CG-0336 Explosion IEC/EN 60079-0, IEC/EN/GOST 60079-1, IEC/EN/GOST 60079-28, IEC/EN/GOST 60079-31, GOST 31610.0, GB3836.1, GB3836.2, CAN/CSA-C22.2 No. 60079-0, CAN/CSA-C22.2 No. 60079-1, CAN/CSA-C22.2 No. 60079-28, CSA-C22.2 No. 60065-03, CAN/CSA C22.2 No. 25, CAN/CSA C22.2 No. 30-M, UL 1203	
Certifications	ATEX: II 2 G Ex db (op pr) IIC T4 Gb -60°C to 70°C Gb II 2 D Ex tb (op pr) IIIC T135°C Db IP66/67 Certificate: ITS16ATEX101021X IECEX: Ex db (op pr) IIC T4 -60°C to 70°C Gb Ex tb (op pr) IIIC T135°C Db IP66/67 Certificate: IECEX ITS 15.0068X cLC CSA: Ex d IIC T4 -60°C ≤ Ta ≤ +70°C Certificate: 11396-1S-CSA EAC: Ex db (op pr) IIC T4 Gb -60°C to 70°C Ex tb IIIC T135°C Db IP66/67 Certificate: TCRUCGB.ГБ04.800587 cULus: Class I, Division 1, Groups B, C, D, T4 -50°C to 70°C Class II, Division 1, Groups E, F, G, IP67 Certificate: E477542	
Dimensions	475 x 512 x 480 mm (18 3/4 x 20 1/4 x 18 7/8 in)	
Weight	53 kg (117 lb)	
Included accessories	Sunshield, installation guide, Windows decoder 1-user license, AXIS Surveillance microSDXC™ Card 128 GB	

Optional accessories	Ex Power Supply ATEX/IECEX, Ex Power Supply UL Ex Washer Tank Pressurized ATEX/IECEX, Ex Cable ATEX/IECEX/EAC in various lengths, Ex Wall Mount XP40 Not all accessories are available for all certifications. For more accessories, see axis.com
Video management software	AXIS Companion, AXIS Camera Station, video management software from Axis Application Development Partners available at axis.com/vms
Languages	English, German, French, Spanish, Italian, Russian, Simplified Chinese, Japanese, Korean, Portuguese, Traditional Chinese
Warranty	5-year warranty, see axis.com/warranty

- a. This product includes software developed by the OpenSSL Project for use in the OpenSSL Toolkit. (openssl.org), and cryptographic software written by Eric Young (eyay@cryptsoft.com).

Environmental responsibility:

axis.com/environmental-responsibility

For more information please contact:



BOCK OPTRONICS INC.
14 Steinway Blvd., Unit 7
Toronto, Ontario M9W 6M6

Tel: (416) 674-2804
sales@bockoptronics.ca
www.bockoptronics.ca

XF40-Q2901 Explosion-Protected Temperature Alarm Camera

Temperature detection in hazardous areas

XF40-Q2901 Explosion-Protected Temperature Alarm Camera is suitable for onshore, offshore, marine and heavy industrial environments. The stainless steel housing is certified for hazardous areas, and prevents any inside sparks or explosions from escaping and igniting vapors, gases, dust or fibers in the surrounding air. The camera supports temperature alarm zones triggering alarms based on deviation of the temperature. It tells the temperature of a particular area. Easy visualization of hot spots with isothermal palettes to identify overheated equipment or areas. The network camera offers a high level of integration with other equipment, such as access control and fire alarms.

- > **Stainless steel (SAE 316L) housing**
- > **336x256 thermal resolution**
- > **Temperature alarm and isothermal palettes**
- > **Spot temperature reading**
- > **Wide temperature range**



XF40-Q2901 Explosion-Protected Temperature Alarm Camera

Models	XF40-Q2901 XF40-Q2901 -60 C XF40-Q2901 -50 C UL All models are available in different versions depending on the regional requirements for hazardous equipment certification.	Germanium protective window
Certification part code	XF40-Q2901/XF40-Q2901 -60 C: 1410-TI-50 Supplied in 1410 series explosion-protected housing. XF40-Q2901 -50 C UL: OXALIS-UL1410-TI-50 Supplied in UL1410 series explosion-protected housing.	Memory 256 MB RAM, 128 MB Flash
Camera		Power Max consumption, 24 V AC: 28 W
Image sensor	Uncooled Micro bolometer 336x256 pixels, Pixel size 17 µm Spectral range: 8–14 µm	Connectors XF40-Q2901 models: Three M20 cable entry for cable conduits XF40-Q2901 UL: Three 3/4" NPT conduit entries
Lens	Athermalized 19 mm, F1.25 Horizontal field of view: 17° Min. focus distance: 9.5 m (354.3 in)	Storage Support for microSD/microSDHC/microSDXC card Support for recording to network-attached storage (NAS) For SD card and NAS recommendations see axis.com
Detection range	The size of a monitored object is recommended to cover at least 10x10 pixels in 336x256.	Operating conditions Temperatures depend on the certifications. See Certifications section: XF40-Q2901: -40 °C to 70 °C (-40 °F to 158 °F) XF40-Q2901 -60 C: -60 °C to 40 °C (-76 °F to 104 °F) XF40-Q2901 -50 C UL: -50 °C to 70 °C (-58 °F to 158 °F) Humidity 10–100% RH (condensing)
Sensitivity	NETD < 50 mK	Storage conditions -40 °C to 65 °C (-40 °F to 149 °F)
Thermography		Approvals EMC EN 55022 Class A, EN 55024, EN 61000-6-1, EN 61000-6-2, FCC Part 15 Subpart B Class A, ICES-3(A)/NMB-3(A), RCM AS/NZS CISPR 22 Class A Safety EN/UL/CSA 60065 Environment IEC/EN 60529 IP66, IP67 Explosion IEC/EN/SANS/ABNT NBR 60079-0, IEC/EN/SANS/ABNT NBR/GOST 60079-1, IEC/EN/SANS/ABNT NBR/GOST 60079-31, GOST 31610.0, GB3836.1, GB3836.2, CAN/CSA-C22.2 No. 60079-0, CAN/CSA-C22.2 No. 60079-1, CSA-C22.2 No. 60065-03, CAN/CSA C22.2 No. 25, CAN/CSA C22.2 No. 30-M, UL 1203 Network NIST SP500-267
Object temperature range	-40 °C to 550 °C (-40 °F to 1022 °F)	Certifications ATEX:II 2 G Ex db IIC T4 Gb -60°C ≤ Ta ≤ +70°C Gb, II 2 D Ex tb IIIC T135°C Db IP66/67, Certificate: ITS16ATEX101021X IECEX: Ex db IIC T4 -60°C ≤ Ta ≤ +70°C Gb, Ex tb IIIC T135°C Db IP66/67, Certificate: IECEX ITS 15.0068X Immetro: IIC T4 Gb -60°C ≤ Ta ≤ +70°C Gb, IIIC T135°C Db IP66/67, Certificate: UL-BR 17.0063X cLCSA: Ex d IIC T4 -60°C ≤ Ta ≤ +60°C, Certificate: 11396-1S-CSA EAC: Ex db IIC T4 Gb -60°C ≤ Ta ≤ +70°C, Ex tb IIIC T135°C Db IP66/67, Certificate: TCRUCGB.ГБ04.В00587 CCOE: Ex db IIC T4 Gb -60°C ≤ Ta ≤ +70°C, Ex tb IIIC T135°C Db IP66/67, Certificate: P400546/1 CNEX: Ex db IIC T4 Gb -60°C ≤ Ta ≤ +70°C, Ex tb IIIC T135°C Db IP66/67, Certificate: 17.1245X IA: Ex db IIC T4 Gb -60°C ≤ Ta ≤ +70°C, Ex tb IIIC T135°C Db IP66/67, Certificate: S-XPL/17.0244X KCC: Ex d IIC T4 -60°C ≤ Ta ≤ +70°C, Ex tD A21 T135°C IP66/67 -60°C to +65°C, Certificate: 17-GA4B0-0351X, 17-GA4B0-0352X UL: Class I, Division 1, Groups B, C, D, T4+ -50°C to +70°C (-58°F to +158°F), Class II, Division 1, Groups E, F, G, IP67, Class 1 Zone 1 A Ex d IIB + Hydrogen T4, Certificate: 20170721-E477542
Temperature accuracy	Below 100 °C (212 °F): +/- 5 °C (+/-9 °F) accuracy Below 150 °C (302 °F): +/- 5% accuracy Above 150 °C (302 °F): +/- 20% accuracy	Dimensions 165 x 176 x 480 mm (6 1/2 x 6 15/16 x 18 7/8 in)
Video		Weight 14 kg (31 lb)
Video compression	H.264 (MPEG-4 Part 10/AVC) Baseline, and Main profiles Motion JPEG	Included accessories Sunshield, installation guide, Windows decoder 1-user license, AXIS Surveillance microSDXC™ Card 64 GB
Resolution	Sensor is 336x256. Image can be scaled up to 720x576.	Optional accessories Ex Power Supply ATEX Ex Washer Tank Pressurized ATEX/IECEX, Ex Power Supply UL, Ex Cable ATEX/IECEX/EAC in various lengths, wall and pole stainless steel mounts Not all accessories are available for all certifications. For more accessories, see axis.com
Frame rate	Up to 8.3 fps	Video management software AXIS Companion, AXIS Camera Station, Video management software from Axis' Application Development Partners available on axis.com/techsup/software
Video streaming	3 individual streams ^a in H.264 and Motion JPEG: simultaneous, individually configured streams in max. resolution at 8.3 fps Controllable frame rate and bandwidth VBR/CBR H.264	Languages English, German, French, Spanish, Italian, Russian, Simplified Chinese, Japanese, Korean, Portuguese, Traditional Chinese
Image settings	Sharpness, automatic gain control, exposure zones, max gain, rotation, palette, isothermal palette, compression, mirroring, text and image overlay, privacy masks	Warranty 5-year warranty, see axis.com/warranty
Network		
Security	Password protection, IP address filtering, HTTPS ^b encryption, Digest authentication, User access log, Centralized Certificate Management	
Supported protocols	IPv4, IPv6 USGv6, HTTP, HTTPS ^b , SSL/TLS ^b , QoS Layer 3 DiffServ, FTP, CIFS/SMB, SMTP, Bonjour, UPnP TM , SNMP v1/v2c/v3 (MIB-II), DNS, DynDNS, NTP, RTSP, RTP, TCP, UDP, IGMPv1/v2/v3, RTCP, ICMP, DHCP, ARP, SOCKS, SSH	
System integration		
Application Programming Interface	Open API for software integration, including VAPIX [®] and AXIS Camera Application Platform; specifications at axis.com AXIS Guardian with One-Click Connection One-click cloud connection ONVIF [®] Profile S and ONVIF [®] Profile G, specification at onvif.org	
Analytics	AXIS Video Motion Detection, Shock detection Support for AXIS Camera Application Platform, see axis.com/acap	
Event triggers	Analytics, Temperature detection (6 alarm zones), Hardware temperature, Edge storage events, Time scheduled, Motion detection	
Event actions	Overlay text, video recording to edge storage, pre- and post-alarm video buffering, send SNMP trap File upload via FTP, SFTP, HTTP, HTTPS, network share and email Notification via email, HTTP, HTTPS and TCP	
Data streaming	Event data	
Built-in installation aids	Pixel counter	
General		
Casing	IP66- and IP67- rated, electropolished SAE 316L stainless steel casing for maximum corrosion protection	

Export control The product contains U.S.-origin controlled technology/component, the US Export Administration Regulations (EAR) are always applicable to the product. You should comply at all times with all applicable national and international (re-) export control regulations.

a. Individual palette cannot be set per video stream

b. This product includes software developed by the OpenSSL Project for use in the OpenSSL Toolkit. (www.openssl.org), and cryptographic software written by Eric Young (ey@cryptsoft.com).

Environmental responsibility:

axis.com/environmental-responsibility

For more information please contact:

BOCK OPTRONICS INC.
14 Steinway Blvd., Unit 7
Toronto, Ontario M9W 6M6

Tel: (416) 674-2804
sales@bockoptronics.ca
www.bockoptronics.ca



ExCam XF Q1645 Explosion-Protected Network Camera

Every detail counts in hazardous areas

ExCam XF Q1645 Explosion-Protected Network Camera is an easy-to-install and easy-to-integrate fixed box camera. It delivers high-resolution video (2 MP) at full frame rate (up to 120 fps) for crystal-clear images. The electronic image stabilization greatly improves video quality where the camera is subject to vibrations. The camera is adapted for explosion-prone applications with ATEX, IECEx, EAC Ex, and IA certifications. With low weight, PoE support for plug-and-play installation, ExCam XF Q1645 offers significant savings. The camera helps detecting unauthorized individuals and monitor employee safety in hazardous areas. Suitable for onshore, offshore, marine, and heavy industrial environments.

- > **Certified for ATEX, IECEx, EAC Ex, and IA; Zones 1, 2, 21, and 22; Groups IIC and IIIC**
- > **Cost-efficient installation with PoE**
- > **HDTV 1080p at 100/120 fps**
- > **Unparalleled light sensitivity with 1/2" sensor**
- > **Electronic image stabilization (EIS) and low weight**



ExCam XF Q1645 Explosion-Protected Network Camera

Camera		MQTT publish
Image sensor	1/2" progressive scan RGB CMOS	Data streaming Event data
Lens	IR corrected i-CS lens Varifocal 3.9–10.0 mm, F1.5 Horizontal field of view: 85°–42° Vertical field of view: 47°–23°	Built-in installation aids Remote focus and zoom with supplied i-CS lens Traffic wizard, pixel counter, levelling assistant
Day and night	Automatically removable infrared-cut filter	Analytics
Minimum illumination	HDTV 1080p 25/30 fps: Color: 0.03 lux, B/W: 0.01 lux, SNR: 0.03 lux, at 50 IRE F1.5 HDTV 1080p 25/30 fps (WDR off): Color: 0.02 lux, SNR: 0.02 lux, at 50 IRE F1.5	Applications Included AXIS Motion Guard, AXIS Fence Guard, AXIS Loitering Guard AXIS Video Motion Detection, active tampering alarm Supported AXIS Perimeter Defender Support for AXIS Camera Application Platform enabling installation of third-party applications, see axis.com/acap
Shutter speed	1/100000 to 2 s	General
Pan/Tilt/Zoom	Digital PTZ, uploadable PTZ driver (Pelco D pre-installed)	Casing IP68-rated, SS 1.4404 (ASTM 316L) stainless steel casing for maximum corrosion protection. Casing manufactured and certified by Samcon Prozessleittechnik GmbH, www.samcon.eu
System on chip (SoC)		Sustainability PVC free
Model	ARTPEC-6	Power Camera: Power over Ethernet (PoE) IEEE 802.3af/802.3at Type 1 Class 3 Typical 4.5 W, max 9.1 W Heater: 24 V DC, max 40 W 24 V DC is required for operating at temperatures below 0 °C (32 °F).
Memory	1 GB RAM, 512 MB Flash	Connectors EXTB-3 Junction Box ExCam: 10 terminal clamp UT 2.5 2 conductor terminal USLKG 5
Video		Storage Pre-installed AXIS Surveillance microSDXC Card 128 GB Support for SD card encryption (AES-XTS-Plain64 256bit) Support for recording to network-attached storage (NAS) For SD card and NAS recommendations see axis.com
Video compression	H.264 (MPEG-4 Part 10/AVC), Main, Baseline and High Profile Motion JPEG	Operating conditions -60 °C to 60 °C (-76 °F to 140 °F) Humidity 10–100% RH (condensing)
Resolution	1920x1080 to 320x180	Storage conditions -40 °C to 65 °C (-40 °F to 149 °F)
Frame rate	Up to 100/120 fps (50/60 Hz) in 1920x1080 (no WDR)	Approvals EMC EN 55032 Class A, EN 61000-6-2, EN 61000-3-2, EN 61000-3-3, EN 62479, EN 61000-4-2, EN 61000-4-3, EN 61000-4-4, EN 61000-4-5, EN 61000-4-6, EN 61000-4-8, EN 61000-4-11 Safety IS 13252 Environment IEC/EN 60529 IP68, IEC/EN 62262 IK10 Explosion DIN EN/IEC 60079-0, DIN EN/IEC 60079-1, DIN EN/IEC 60079-7, DIN EN/IEC 60079-31, TR CU 012/2011, GOST R IEC 60079-0, GOST IEC 60079-1, GOST R IEC 60079-7, GOST R IEC 60079-31 Network NIST SP500-267
Video streaming	Multiple, individually configurable streams in H.264 and Motion JPEG Axis Zipstream technology in H.264 Controllable frame rate and bandwidth VBR/MBR H.264	Certifications Camera: Model key: T08-VA2.3.K3.B0R2-LL.H-005.A-T ATEX: II 2 G Ex db IIC T5 Gb, Ex II 2 D Ex tb IIIC T95°C Db, I M2 Ex db I Mb Certificate: TÜV 18 ATEX 8218X IECEX: Ex db IIC T5 Gb, Ex tb IIIC T95°C Db, Ex d I Mb Certificate: IECEX TUR 18.0023X IA: Ex db IIC T5 Gb, Ex tb IIIC T95°C Db, Ex d I Mb Certificate: MASC MS/18-3256X EAC Ex: 1Ex db IIC T5 Gb, Ex tb IIIC T95°C Db, PB db I Mb Series: T08, Model: T08-VA2.3. Certificate: RU C-DE.AB61.B.00381/19 EXTB-3 Junction Box ExCam: (to be removed if the camera is installed in mines) Model key: T12-3M20 ATEX: II 2 G Ex eb IIC T5 Gb, II 2 D Ex tb IIIC T95°C Db IP66, -50°C < Tamb < +55°C Certificate: PTB 99 ATEX 3103 IECEX: Ex e IIC T5 Gb, Ex IIIC T95°C Db IP66, -50°C < Tamb < +55°C Certificate: IECEX PTB 06.0026 EAC Ex: 1Ex e IIC T5 Gb X, Ex tb IIIC T95°C Db X Certificate: RU C-DE.AA71.B.00120
Image settings	Saturation, contrast, brightness, sharpness, Forensic WDR – 120 dB, white balance, day/night threshold, exposure mode, exposure zones, compression, orientation: auto, 0°, 90°, 180°, 270° including Corridor Format, mirroring of images, text and image overlay, privacy masks, defogging, noise reduction, electronic image stabilization, barrel distortion correction, orientation aid, fine tuning of behavior at low light Scene profiles: forensic, live, traffic overview, backlit entrance	
Network		
Security	Password protection, IP address filtering, HTTPS ^a encryption, IEEE 802.1X ^a network access control, digest authentication, user access log, centralized certificate management, brute force delay protection	
Supported protocols	IPv4, IPv6 USGv6, ICMPv4/ICMPv6, HTTP, HTTP/2, HTTPS ^a , TLS ^a , QoS Layer 3 DiffServ, FTP, CIFS/SMB, SMTP, mDNS (Bonjour), UPnP™, SNMPv1/v2c/v3 (MIB-II), DNS/DNSv6, DDNS, NTP, RTSP, RTP, SFTP, TCP, UDP, IGMPv1/v2/v3, RTCP, ICMP, DHCPv4/v6, ARP, SOCKS, SSH, LLDP, CDP, MQTT v3.1.1, Syslog, Link-Local address (ZeroConf)	
System integration		
Application Programming Interface	Open API for software integration, including VAPIX [®] and AXIS Camera Application Platform; specifications at axis.com One-Click Cloud Connection ONVIF Profile S and ONVIF Profile G, specifications at onvif.org	
Event triggers	Analytics, external input, edge storage events Detectors: live stream accessed, video motion detection, shock detection Hardware: network, temperature Input Signal: manual trigger, virtual inputs MQTT subscribe PTZ: error, moving, preset reached, ready Storage: disruption, recording System: system ready Time: recurrence, use schedule	
Event actions	File upload: FTP, SFTP, HTTP, HTTPS, network share and email, send video clip Notification: email, HTTP, HTTPS and TCP Overlay text, Send SNMP Trap Video recording to edge storage Pre- and post-alarm video buffering External output activation, day/night vision mode, status LED, WDR mode, Defog mode, PTZ control	

	PESO: Ex db IIC T6 Gb Certificate: A/P/HQ/KA/104/5735
Dimensions	357 x 113 x 139 mm (14.06 x 4.45 x 5.5 in)
Weight	10.8 kg (23.8 lb)
Included accessories	Weathershield ExCam XF, Installation Guide, Windows decoder 1-user license, ASKDP03-T Cable ExCam 5 m (16 ft), EXTB-3 Junction Box ExCam, AXIS Surveillance microSDXC Card 128 GB
Optional accessories	Wall Mount ExCam XF, Pole Mount ExCam XF Non-armored cables ExCam, 10, 25, 95 m (33, 82, 312 ft), Armored cables ExCam, 10, 25, 95 m (33, 82, 312 ft) Ex Connection Rail 4-port PoE PS 24, Ex Connection Rail 8-port PoE PS 24 For more accessories, see axis.com

Video management software	AXIS Companion, AXIS Camera Station, video management software from Axis Application Development Partners available on axis.com/vms
Languages	English, German, French, Spanish, Italian, Russian, Simplified Chinese, Japanese, Korean, Portuguese, Traditional Chinese
Warranty	5-year warranty, see axis.com/warranty

- a. *This product includes software developed by the OpenSSL Project for use in the OpenSSL Toolkit (<http://www.openssl.org/>), and cryptographic software written by Eric Young (ey@cryptsoft.com).*

Environmental responsibility:

axis.com/environmental-responsibility

For more information please contact:



BOCK OPTRONICS INC.
14 Steinway Blvd., Unit 7
Toronto, Ontario M9W 6M6

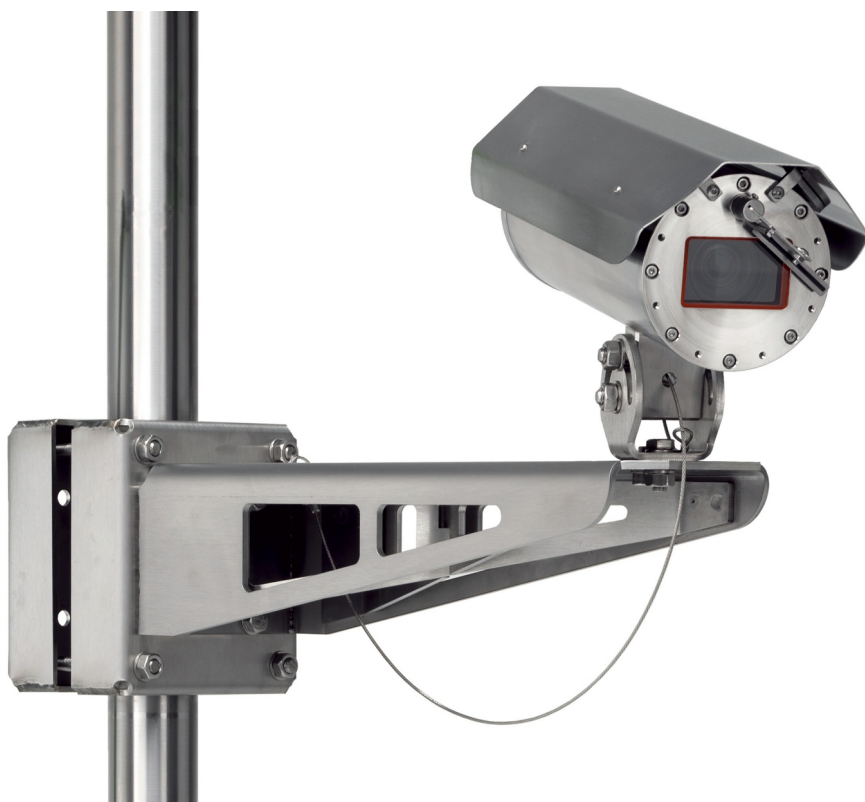
Tel: (416) 674-2804
sales@bockoptronics.ca
www.bockoptronics.ca

ExCam XF Q1785 Explosion-Protected Network Camera

First-class fixed box for hazardous areas

ExCam XF Q1785 Explosion-Protected Network Camera is an easy-to-install and easy-to-integrate camera. It delivers superb zoomed-in detail you expect from a top-of-the-line fixed box camera from Axis. The electronic image stabilization greatly improves video quality where the camera is subject to vibrations. The camera is adapted for explosion-prone applications with ATEX, IECEx, EAC Ex, and IA certifications. With PoE support for plug-and-play installation, ExCam XF Q1785 offers significant savings. Lightfinder and Forensic WDR technologies ensure perfect balance in scenes with strong variations in light, even in poor light. Suitable for onshore, offshore, marine, and heavy industrial environments.

- > [Certified for ATEX, IECEx, EAC Ex, and IA; Zones 1, 2, 21, and 22; Groups IIC and IIIC](#)
- > [Cost-efficient installation with PoE](#)
- > [HDTV 1080p with 32x optical zoom](#)
- > [Lightfinder and WDR technologies](#)
- > [Electronic image stabilization \(EIS\)](#)



ExCam XF Q1785 Explosion-Protected Network Camera

Camera		AXIS Video Motion Detection, active tampering alarm, gatekeeper Supported AXIS Perimeter Defender Support for AXIS Camera Application Platform enabling installation of third-party applications, see axis.com/acap
Image sensor	1/2.8" progressive scan RGB CMOS	
Lens	Varifocal 4.3–137 mm, F1.4–4.0 Horizontal field of view: 60°–2.3° Vertical field of view: 39°–1.3° Autofocus	
Minimum illumination	Color: 0.16 lux at 50 IRE F1.4 B/W: 0.03 lux at 50 IRE F1.4	
Shutter speed	1/66500 s to 1 s	
System on chip (SoC)		
Model	ARTPEC-6	
Memory	1024 MB RAM, 512 MB Flash	
Video		
Video compression	H.264 (MPEG-4 Part 10/AVC) Baseline, Main and High Profiles Motion JPEG	
Resolution	1920x1080 HDTV 1080p (16:9) to 160x120 (4:3) Maximum pixel density with 32x optical zoom: 25 m (82 ft): 1912 px/m 50 m (164 ft): 956 px/m 250 m (820 ft): 191 px/m	
Frame rate	With WDR: Up to 25/30 fps (50/60 Hz) in all resolutions Without WDR: Up to 50/60 fps (50/60 Hz) in all resolutions	
Video streaming	Multiple, individually configurable streams in H.264 and Motion JPEG Axis Zipstream technology in H.264 Controllable frame rate and bandwidth VBR/MBR H.264	
Image settings	Saturation, contrast, brightness, sharpness, Forensic WDR: Up to 120 dB depending on scene, defogging, white balance, exposure mode, exposure zones, compression, mirroring of images, electronic image stabilization, barrel distortion correction, text and image overlay, dynamic text and image overlay, privacy masks Rotation: auto, 0°, 90°, 180°, 270° including Corridor Format Scene profiles: forensic, vivid, traffic overview, backlit entrance	
Pan/Tilt/Zoom	Digital ptz Zoom: 32x Optical, 12x Digital, Total 384x Preset positions	
Network		
Security	Password protection, IP address filtering, HTTPS ^a encryption, IEEE 802.1X ^a network access control, digest authentication, user access log, centralized certificate management, brute force delay protection	
Supported protocols	IPv4, IPv6 USGv6, ICMPv4/ICMPv6, HTTP, HTTP/2, HTTPS ^a , TLS ^a , QoS Layer 3 DiffServ, FTP, SFTP, CIFS/SMB, SMTP, mDNS (Bonjour), UPnP ^b , SNMP v1/v2c/v3 (MIB-II), DNS/DNSv6, DDNS, NTP, RTSP, RTP, SRTP, TCP, UDP, IGMPv1/v2/v3, RTCP, ICMP, DHCPv4/v6, ARP, SOCKS, SSH, LLDP, CDP, MQTT v3.1.1, Syslog, Link-Local address (ZeroConf)	
System integration		
Application Programming Interface	Open API for software integration, including VAPIX [®] and AXIS Camera Application Platform; specifications at axis.com One-click cloud connection ONVIF [®] Profile G, ONVIF [®] Profile S, and ONVIF [®] Profile T, specification at onvif.org	
Event triggers	Analytics, supervised external input, edge storage events, virtual inputs through API, shock detection MQTT subscribe	
Event actions	Pre- and post-alarm video buffering File upload: FTP, SFTP, HTTP, HTTPS, network share and email MQTT publish Notification: email, HTTP, HTTPS, TCP and SNMP trap	
Data streaming	Event data	
Built-in installation aids	Remote zoom, pixel counter, leveling assistant, autorotation	
Analytics		
Applications	Included AXIS Motion Guard, AXIS Fence Guard, AXIS Loitering Guard	
General		
Casing	IP68-rated, ASTM 316L (EN 1.4404) stainless steel casing for maximum corrosion protection Wiper included De-icing control ^b Casing manufactured and certified by Samcon Prozessleittechnik GmbH, samcon.eu	
Sustainability	PVC free	
Power	Power over Ethernet (PoE) IEEE 802.3af/802.3at Type 1 Class 3 Typical 7.7 W, max 12.95 W 24 V DC, max 40 W 24 V DC is required for operating at temperatures below 0 °C (32 °F) and for wiper functionality	
Connectors	EXTB-3 Junction Box ExCam: 10 terminal clamp UT 2.5 2 conductor terminal USLKG 5	
Storage	Pre-installed AXIS Surveillance microSDXC Card 128 GB Support for SD card encryption (AES-XTS-Plain64 256bit) Support for recording to network-attached storage (NAS) For SD card and NAS recommendations see axis.com	
Operating conditions	-60 °C to 60 °C (-76 °F to 140 °F) Maximum temperature (intermittent): 75 °C (167 °F) Humidity 10–100% RH (condensing)	
Storage conditions	-40 °C to 65 °C (-40 °F to 149 °F) Humidity 5–95% RH (non-condensing)	
Approvals	EMC EN 55032 Class A, EN 61000-6-2, EN 61000-3-2, EN 61000-3-3, EN 62479, EN 61000-4-2, EN 61000-4-3, EN 61000-4-4, EN 61000-4-5, EN 61000-4-6, EN 61000-4-8, EN 61000-4-11 Safety IS 13252 Environment IEC/EN 60529 IP68 Explosion DIN EN/IEC 60079-0, DIN EN/IEC 60079-1, DIN EN/IEC 60079-7, DIN EN/IEC 60079-31, TR CU 012/2011, GOST R IEC 60079-0, GOST IEC 60079-1, GOST R IEC 60079-7, GOST R IEC 60079-31 Network NIST SP500-267	
Certifications	Camera: Model key: T08-VA2.3.K3.B0R5-LLH-005.A-T ATEX: II 2 G Ex db IIC T5 Gb, II 2 D Ex tb IIIC T95°C Db Certificate: TÜV 18 ATEX 8218X IECEX: Ex db IIC T5 Gb, Ex tb IIIC T95°C Db Certificate: IECEX TUR 18.0023X IA: Ex db IIC T5 Gb, Ex tb IIIC T95°C Db Certificate: MASC MS/18-3256X EAC Ex: 1Ex db IIC T5 Gb, Ex tb IIIC T95°C Db Series: T8, Model: T08-VA2.3. Certificate: RU C-DE.AB61.B.00381/19 EXTB-3 Junction Box ExCam: Model key: T12-3M20 ATEX: II 2 G Ex eb IIC T5 Gb, Ex II 2 D Ex tb IIIC T95°C Db IP66 Certificate: PTB 99 ATEX 3103 IECEX: Ex e IIC T5 Gb, Ex IIIC T95°C Db IP66 Certificate: IECEX PTB 06.0026 EAC Ex: 1Ex e IIC T5 Gb X, Ex tb IIIC T95°C Db X Certificate: RU C-DE.AA71.B.00120 PESO: Ex db IIC T6 Gb Certificate: A/P/HQ/KA/104/5735	
Dimensions	396 x 135 x 171 mm (15 9/16 x 5 5/16 x 6 3/4 in)	
Weight	11.1 kg (24.5 lb)	
Included accessories	Installation Guide, Windows decoder 1-user license, Weathershield ExCam XF, ASKDP03-T Cable ExCam 5 m (16 ft), EXTB-3 Junction Box ExCam, AXIS Surveillance microSDXC Card 128 GB	

Optional accessories	Wall Mount ExCam XF, Pole Mount ExCam XF Non-armored cables ExCam, 10, 25, 95 m (33, 82, 312 ft), Armored cables ExCam, 10, 25, 95 m (33, 82, 312 ft) Ex Connection Rail 4 PoE PS 24, Ex Connection Rail 8 PoE PS 24 For more accessories, see axis.com
Video management software	AXIS Companion, AXIS Camera Station, video management software from Axis Application Development Partners available at axis.com/vms
Languages	English, German, French, Spanish, Italian, Russian, Simplified Chinese, Japanese, Korean, Portuguese, Traditional Chinese
Warranty	5-year warranty, see axis.com/warranty

- a. This product includes software developed by the OpenSSL Project for use in the OpenSSL Toolkit. (openssl.org), and cryptographic software written by Eric Young (eyay@cryptsoft.com).
- b. Internal heaters to defrost ice build-up, activated by HTTP API (VAPIX).

Environmental responsibility:

axis.com/environmental-responsibility

For more information please contact:



BOCK OPTRONICS INC.
14 Steinway Blvd., Unit 7
Toronto, Ontario M9W 6M6

Tel: (416) 674-2804
sales@bockoptronics.ca
www.bockoptronics.ca

ExCam XF P1367 Explosion-Protected Network Camera

Superb light sensitivity in hazardous areas

ExCam XF P1367 Explosion-Protected Network Camera is an easy-to-install and easy-to-integrate fixed box camera in stainless steel. Thanks to i-CS lens, the zoom can be set remotely, and the camera automatically sets the focus. Images are optimized for forensic purposes regardless of lighting conditions, thanks to Lightfinder and WDR-Forensic Capture. The camera is adapted for explosion-prone applications with ATEX, IECEx, EAC Ex, and IA certifications. With low weight, PoE support for plug-and-play installation, ExCam XF P1367 offers significant savings. The camera helps detecting unauthorized individuals and monitor employee safety in hazardous areas. Suitable for onshore, offshore, marine, and heavy industrial environments.

- > **Certified for ATEX, IECEx, EAC Ex, and IA; Zones 1, 2, 21, and 22; Groups IIC and IIIC**
- > **Cost-efficient installation with PoE**
- > **Low weight for simple installation**
- > **Remote zoom and focus with i-CS lens**
- > **5 MP resolution at 25/30 fps**



ExCam XF P1367 Explosion-Protected Network Camera

Camera	
Image sensor	1/2.9" progressive scan RGB CMOS
Lens	IR corrected i-CS lens Varifocal 2.8–8.5 mm, F1.2 Horizontal field of view: 98°–36° Vertical field of view: 54°–20°
Day and night	Automatically removable infrared-cut filter
Minimum illumination	Color: 0.15 lux B/W: 0.03 lux, at 50 IRE F1.2
Shutter speed	1/55500 s to 2 s
System on chip (SoC)	
Model	ARTPEC-6
Memory	1 GB RAM, 512 MB Flash
Video	
Video compression	H.264 (MPEG-4 Part 10/AVC) Baseline, Main and High Profiles Motion JPEG
Resolution	3072x1728 (5 MP) to 160x90
Frame rate	25/30 fps (50/60 Hz) in all resolutions
Video streaming	Multiple, individually configurable streams in H.264 and Motion JPEG Ziptream technology in H.264 Controllable frame rate and bandwidth VBR/MBR H.264
Multi-view streaming	Up to 8 individually cropped out view areas
Image settings	Saturation, contrast, brightness, sharpness, local contrast, white balance, exposure control, exposure zones, WDR - forensic capture: Up to 120 dB depending on scene, fine tuning of behavior at low light, rotation: 0°, 90°, 180°, 270° including Corridor Format, text and image overlay, privacy mask, mirroring of images
Network	
Security	Password protection, IP address filtering, HTTPS ^a encryption, IEEE 802.1X ^a network access control, Digest authentication, User access log, brute force delay protection
Supported protocols	IPv4/v6, ICMPv4/ICMPv6, HTTP, HTTP/2, HTTPS ^a , TLS ^a , QoS Layer 3 DiffServ, FTP, CIFS/SMB, SMTP, mDNS (Bonjour), UPnP™, SNMP v1/v2c/v3 (MIB-II), DNS/DNSv6, DDNS, NTP, RTSP, RTP, SRTP, SFTP, TCP, UDP, IGMPv1/v2/v3, RTCP, ICMP, DHCPv4/v6, ARP, SOCKS, SSH, LLDP, CDP, MQTT v3.1.1, Syslog, Link-Local address (ZeroConf)
System integration	
Application Programming Interface	Open API for software integration, including VAPIX [®] and AXIS Camera Application Platform; specifications at axis.com One-click cloud connection ONVIF [®] Profile G, ONVIF [®] Profile S, and ONVIF [®] Profile T, specification at onvif.org
Event triggers	Analytics, edge storage events Detectors: live stream accessed, video motion detection, shock detection Hardware: network, temperature MQTT subscribe Storage: disruption, recording System: system ready Time: recurrence, use schedule
Event actions	Record video: SD card and network share MQTT publish Upload of images or video clips: FTP, SFTP, HTTP, HTTPS, network share and email Pre- and post-alarm video or image buffering for recording or upload Notification: email, HTTP, HTTPS, TCP and SNMP trap Overlay text, day/night mode
Data streaming	Event data
Built-in installation aids	Pixel counter Remote focus and zoom with supplied i-CS lens
Analytics	

Applications	Included AXIS Motion Guard, AXIS Fence Guard, AXIS Loitering Guard AXIS Video Motion Detection, active tampering alarm Supported AXIS Perimeter Defender, AXIS Guard Suite including AXIS Motion Guard, AXIS Fence Guard, and AXIS Loitering Guard Support for AXIS Camera Application Platform enabling installation of third-party applications, see axis.com/acap
General	
Casing	IP68-rated, SS 1.4404 (ASTM 316L) stainless steel casing for maximum corrosion protection Casing manufactured and certified by Samcon Prozessleittechnik GmbH, www.samcon.eu
Sustainability	PVC free
Memory	
Power	Camera: Power over Ethernet (PoE) IEEE 802.3af/802.3at Type 1 Class 3, typical 5.0 W, max 8.9 W Heater: 24 V DC, max 40 W 24 V DC is required for operating at temperatures below 0 °C (32 °F).
Connectors	5 m (16 ft) pigtail cable for network (Cat 6) and power
Storage	Pre-installed AXIS Surveillance microSDXC Card 128 GB Support for SD card encryption (AES-XTS-Plain64 256bit) Support for recording to network-attached storage (NAS) For SD card and NAS recommendations see axis.com
Operating conditions	-60 °C to 60 °C (-76 °F to 140 °F) Humidity 10–100% RH (condensing)
Storage conditions	-40 °C to 65 °C (-40 °F to 149 °F)
Approvals	EMC EN 55032 Class A, EN 61000-6-2, EN 61000-3-2, EN 61000-3-3 Environment IEC/EN 60529 IP68 Explosion DIN EN/IEC 60079-0, DIN EN/IEC 60079-1, DIN EN/IEC 60079-31, TR CU 012/2011, GOST R IEC 60079-0, GOST IEC 60079-1, GOST R IEC 60079-31 Network NIST SP500-267
Certifications	Model key: T08-VA2.3.K3.B0R2-LLH-005.N-P ATEX: II 2 G Ex db IIC T5 Gb, II 2 D Ex tb IIIC T95°C Db Certificate: TÜV 18 ATEX 8218X IECEx: Ex db IIC T5 Gb, Ex tb IIIC T95°C Db Certificate: IECEx TUR 18.0023X IA: Ex db IIC T5 Gb, Ex tb IIIC T95°C Db Certificate: MASC MS/18-3256X EAC Ex: 1Ex db IIC T5 Gb, Ex tb IIIC T 95°C Db Series: T8, Model: T08-VA2.3. Certificate: RU C-DE.AB61.B.00381/19 PESO: Ex db IIC T6 Gb Certificate: P453640
Dimensions	Length: 310 mm (12 3/16 in) ø 113 mm (4.45 in)
Weight	7.8 kg (17 lb)
Included accessories	Installation Guide, Windows [®] decoder 1-user license, SKDP03-T Cable ExCam 5 meter, AXIS Surveillance microSDXC Card 128 GB
Optional accessories	Wall Mount ExCam XF, Pole Mount ExCam XF, EXTB-3 Junction Box ExCam, Non-armored cables ExCam, 10, 25, 95 m (33, 82, 312 ft), Armored cables ExCam, 10, 25, 95 m (33, 82, 312 ft), Ex Connection Rail 4-port PoE PS 24, Ex Connection Rail 8-port PoE PS 24, Weathershield ExCam XF For more accessories, see axis.com
Video management software	AXIS Companion, AXIS Camera Station, video management software from Axis Application Development Partners available at axis.com/vms
Languages	English, German, French, Spanish, Italian, Russian, Simplified Chinese, Japanese, Korean, Portuguese, Traditional Chinese

Warranty 5-year warranty, see axis.com/warranty

- a. This product includes software developed by the OpenSSL Project for use in the OpenSSL Toolkit (<http://www.openssl.org/>), and cryptographic software written by Eric Young (ey@cryptsoft.com).

Environmental responsibility:

axis.com/environmental-responsibility

For more information please contact:



BOCK OPTRONICS INC.
14 Steinway Blvd., Unit 7
Toronto, Ontario M9W 6M6

Tel: (416) 674-2804
sales@bockoptronics.ca
www.bockoptronics.ca

XF60-Q2901 Explosion-Protected Temperature Alarm Camera

Temperature detection in hazardous areas

XF60-Q2901 Explosion-Protected Temperature Alarm Camera is suitable for onshore, offshore, marine and heavy industrial environments. The stainless steel housing is certified for areas that are hazardous according to UL, and it prevents any inside sparks or explosions from escaping and igniting vapors, gases, dust or fibers in the surrounding air. The camera supports temperature alarm zones triggering alarms based on deviation of the temperature. It tells the temperature of a particular area. Easy visualization of hot spots with isothermal palettes to identify overheated equipment or areas. The network camera offers a high level of integration with other equipment, such as access control and fire alarms.

- > **Stainless steel (SAE 316L) housing**
- > **336x256 thermal resolution**
- > **Temperature alarm and isothermal palettes**
- > **Spot temperature reading**
- > **Wide temperature range**



XF60-Q2901 Explosion-Protected Temperature Alarm Camera

Models	XF60-Q2901 -50 C 110 V UL	Data streaming	Event data
Certification part code	OXALIS-UL2410-TI-50 Supplied in UL2410 series explosion-protected housing.	Built-in installation aids	Pixel counter
Camera			
Image sensor	Uncooled Micro bolometer 336x256 pixels, Pixel size 17 µm Spectral range: 8–14 µm	General	
Lens	Athermalized 19 mm, F1.25 Horizontal field of view: 17° Min. focus distance: 9.5 m (354.3 in)	Casing	IP66- and IP67- rated, electropolished SAE 316L stainless steel casing for maximum corrosion protection Germanium protective window
Detection range	The size of a monitored object is recommended to cover at least 10x10 pixels in 336x256.	Memory	256 MB RAM, 128 MB Flash
Sensitivity	NETD < 50 mK	Power	Max consumption, 110 V AC: 33 W
Thermography			
Object temperature range	-40 °C to 550 °C (-40 °F to 1022 °F)	Connectors	Three 3/4" NPT conduit entries
Temperature accuracy	Below 100 °C (212 °F): +/- 5 °C (+/-9 °F) accuracy Below 150 °C (302 °F): +/- 5% accuracy Above 150 °C (302 °F): +/- 20% accuracy	Storage	Support for microSD/microSDHC/microSDXC card Support for recording to network-attached storage (NAS) For SD card and NAS recommendations see axis.com
Video			
Video compression	H.264 (MPEG-4 Part 10/AVC) Baseline, and Main profiles Motion JPEG	Operating conditions	-50 °C to 70 °C (-58 °F to 158 °F) Humidity 10–100% RH (condensing)
Resolution	Sensor is 336x256. Image can be scaled up to 720x576.	Storage conditions	-40 °C to 65 °C (-40 °F to 149 °F)
Frame rate	Up to 8.3 fps	Approvals	EMC EN 55022 Class A, EN 55024, EN 61000-6-1, EN 61000-6-2, FCC Part 15 Subpart B Class A, ICES-3(A)/NMB-3(A), RCM AS/NZS CISPR 22 Class A Safety EN/UL/CSA 60065 Environment IEC/EN 60529 IP66, IP67 Explosion UL 1203 CAN/CSA C22.2 No. 25, CSA C22.2 No. 30 M
Video streaming	3 individual streams ^a in H.264 and Motion JPEG: simultaneous, individually configured streams in max. resolution at 8.3 fps Controllable frame rate and bandwidth VBR/CBR H.264	Certifications	UL: Class I Division 1 Groups B, C, D, T4, Class II Division 1 Groups E, F, G, Class III Division 1 -50°C ≤ Ta ≤ +70°C
Image settings	Sharpness, automatic gain control, exposure zones, max gain, rotation, palette, isothermal palette, compression, mirroring, text and image overlay, privacy masks	Dimensions	165 x 176 x 720 mm (6 1/2 x 6 15/16 x 28 3/8 in)
Network			
Security	Password protection, IP address filtering, HTTPS ^b encryption, Digest authentication, User access log, Centralized Certificate Management	Weight	21 kg (46 lb)
Supported protocols	IPv4, IPv6 USGv6, HTTP, HTTPS ^b , SSL/TLS ^b , QoS Layer 3 DiffServ, FTP, CIFS/SMB, SMTP, Bonjour, UPnP™, SNMP v1/v2c/v3 (MIB-II), DNS, DynDNS, NTP, RTSP, RTP, TCP, UDP, IGMPv1/v2/v3, RTCP, ICMP, DHCP, ARP, SOCKS, SSH	Included accessories	Sunshield, installation guide, Windows decoder 1-user license, AXIS Surveillance microSDXC™ Card 64 GB
System integration			
Application Programming Interface	Open API for software integration, including VAPIX [®] and AXIS Camera Application Platform; specifications at axis.com AXIS Guardian with One-Click Connection One-click cloud connection ONVIF [®] Profile S and ONVIF [®] Profile G, specification at onvif.org	Optional accessories	Wall and pole stainless steel mounts For more accessories, see axis.com
Analytics	AXIS Video Motion Detection, Shock detection Support for AXIS Camera Application Platform, see axis.com/acap	Video management software	AXIS Companion, AXIS Camera Station, Video management software from Axis' Application Development Partners available on axis.com/techsup/software
Event triggers	Analytics, Temperature detection (6 alarm zones), Hardware temperature, Edge storage events, Time scheduled, Motion detection	Languages	English, German, French, Spanish, Italian, Russian, Simplified Chinese, Japanese, Korean, Portuguese, Traditional Chinese
Event actions	Overlay text, video recording to edge storage, pre- and post-alarm video buffering, send SNMP trap File upload via FTP, SFTP, HTTP, HTTPS, network share and email Notification via email, HTTP, HTTPS and TCP	Warranty	5-year warranty, see axis.com/warranty
		Export control	The product contains U.S.-origin controlled technology/component, the US Export Administration Regulations (EAR) are always applicable to the product. You should comply at all times with all applicable national and international (re-) export control regulations.

a. Individual palette cannot be set per video stream

b. This product includes software developed by the OpenSSL Project for use in the OpenSSL Toolkit. ([www.openssl.org](#)), and cryptographic software written by Eric Young ([eay@cryptsoft.com](#)).

Environmental responsibility:

[axis.com/environmental-responsibility](#)

For more information please contact:



BOCK OPTRONICS INC.
14 Steinway Blvd., Unit 7
Toronto, Ontario M9W 6M6

Tel: (416) 674-2804
sales@bockoptronics.ca
www.bockoptronics.ca