

AXIS M2025-LE Network Camera

Affordable and outdoor-ready camera with built-in IR

AXIS M2025-LE is a small, bullet-style camera delivering high-quality images in HDTV resolution. It has built-in IR illumination that enables surveillance up to 15 m even at nighttime. The outdoor-ready camera is resistant to rough weather and the integrated sunshield protects against sun and rain. With a 115° field of view, a single camera gives full surveillance at low cost, and Axis Corridor Format provides efficient monitoring of corridors and shopping aisles. WDR – Forensic Capture increases forensic usability by highlighting details in both dark and well-lit areas. The spacious back box enables secure cable management and easy installation.

> **Outdoor-ready, IP66- and NEMA 4X-rated**

> **HDTV 1080p**

> **Built-in IR illumination**

> **115° field of view**

> **Zipstream**



AXIS M2025-LE Network Camera

Models	AXIS M2025-LE AXIS M2025-LE Black	AXIS Video Motion Detection, active tampering alarm Supported AXIS Digital Autotracking, AXIS Cross Line Detection Support for AXIS Camera Application Platform enabling installation of third-party applications, see axis.com/acap
Camera		
Image sensor	1/2.8" progressive scan RGB CMOS	
Lens	M12 mount, Fixed iris, Fixed focus 2.8 mm, F2.0 Horizontal field of view: 115° Vertical field of view: 64°	
Day and night	Automatically removable infrared-cut filter	
Minimum illumination	Color: 0.2 lux at 50 IRE, F2.0 B/W: 0.04 lux at 50 IRE, F2.0 0 lux with IR illumination on	
Shutter speed	1/65000 s to 2 s	
Video		
Video compression	H.264 (MPEG-4 Part 10/AVC) Baseline, Main and High Profiles Motion JPEG	
Resolution	1920x1080 to 160x90	
Frame rate	Up to 25/30 fps with power line frequency 50/60 Hz	
Video streaming	Multiple, individually configurable streams in H.264 and Motion JPEG Axis Zipstream technology in H.264 Controllable frame rate and bandwidth VBR/ABR/MBR H.264	
Multi-view streaming	Up to 2 individually cropped out view areas in full frame rate streaming	
Image settings	Compression, color, brightness, sharpness, contrast, local contrast, white balance, exposure control, WDR – Forensic Capture: up to 115 dB depending on scene, rotation: 0°, 90°, 180°, 270° including Corridor Format, text and image overlay, privacy masks, mirroring of images	
Pan/Tilt/Zoom	Digital PTZ	
Network		
Security	Password protection, IP address filtering, HTTPS ^a encryption, IEEE 802.1x (EAP-TLS) ^a network access control, digest authentication, user access log, centralized certificate management, brute force delay protection, signed firmware	
Supported protocols	IPv4, IPv6 USGv6, HTTP, HTTPS ^a , SSL/TLS ^a , QoS Layer 3 DiffServ, FTP, SFTP, CIFS/SMB, SMTP, Bonjour, UPnP™, SNMP v1/v2c/v3 (MIB-II), DNS, DynDNS, NTP, RTSP, RTP, SRTP, TCP, UDP, IGMPv1/v2/v3, RTCP, ICMP, DHCP, ARP, SOCKS, SSH, LLDP, MQTT v3.1.1	
System integration		
Application Programming Interface	Open API for software integration, including VAPIX [®] and AXIS Camera Application Platform; specifications at axis.com One-click cloud connection ONVIF [®] Profile G, ONVIF [®] Profile S, and ONVIF [®] Profile T. Specifications at onvif.org	
Event triggers	Analytics, edge storage events	
Event actions	Record video: SD card and network share Upload of images or video clips: FTP, SFTP, HTTP, HTTPS, network share and email Pre- and post-alarm video or image buffering for recording or upload Notification: email, HTTP, HTTPS, TCP and SNMP trap Overlay text	
Data streaming	Event data	
Built-in installation aids	Pixel counter	
Analytics		
Applications	Included AXIS Motion Guard, AXIS Fence Guard, AXIS Loitering Guard	
General		
Casing	IP66-, NEMA 250 Type 4X-, and IK08-rated, polymer casing Encapsulated electronics, captive screws (Torx [®] 10) M2025-LE: Color: White NCS S 1002-B M2025-LE Black: Color: Black NCS S 9000-N	
Sustainability	PVC free	
Memory	512 MB RAM, 256 MB Flash	
Power	Power over Ethernet (PoE) IEEE 802.3af/802.3at Type 1 Class 2 Typical 4.1 W, max 6.3 W	
Connectors	RJ45 10BASE-T/100BASE-TX PoE	
IR illumination	Power-efficient, long-life 850 nm IR LED. Range of reach up to 15 m (50 ft) depending on scene	
Storage	Support for microSD/microSDHC/microSDXC card Support for SD card encryption Support for recording to network-attached storage (NAS) For SD card and NAS recommendations see axis.com	
Operating conditions	-30 °C to 50 °C (-22 °F to 122 °F) Humidity 10–100% RH (condensing)	
Storage conditions	-40 °C to 65 °C (-40 °F to 149 °F) Humidity 5–95% RH (non-condensing)	
Approvals	EMC EN 55032 Class A, EN 55024, IEC 62471, EN 61000-6-1, EN 61000-6-2, FCC Part 15 Subpart B Class A, ICES-003 Class A, VCCI Class A, RCM AS/NZS CISPR 32 Class A, KCC KN32 Class A, KN35 Environment IEC 60068-2-1, IEC 60068-2-2, IEC 60068-2-78, IEC 60068-2-14, IEC 60068-2-6, IEC 60068-2-27, IEC/EN 62262 IK08, IEC/EN 60529 IP66, NEMA 250 Type 4X Safety IEC/EN/UL 62368-1, IS 13252 IEC/EN/UL 60950-22 Network NIST SP500-267	
Dimensions	Height, straight: 174 mm (6.9 in) Height, angled: 118 mm (4.6 in) ø 101 mm (4.0 in)	
Weight	0.5 kg (1.1 lb)	
Included accessories	Installation Guide, Windows [®] decoder 1-user license, Torx [®] L-key, Connector guard	
Optional accessories	AXIS T94B03L Recessed Mount, AXIS T94B02D Pendant kit, AXIS T94B01P Conduit Back Box, AXIS T94B02M J-Box/Gang Box Plate, Axis mounts, AXIS Surveillance microSDXC™ Card AXIS T94 mounts for various installations For more accessories, see axis.com/vms	
Video management software	AXIS Companion, AXIS Camera Station, video management software from Axis' Application Development Partners available at axis.com/vms	
Languages	English, German, French, Spanish, Italian, Russian, Simplified Chinese, Japanese, Korean, Portuguese, Traditional Chinese	
Warranty	5-year warranty, see axis.com/warranty	

a. This product includes software developed by the OpenSSL Project for use in the OpenSSL Toolkit. (www.openssl.org), and cryptographic software written by Eric Young (ey@cryptsoft.com).

Environmental responsibility:

axis.com/environmental-responsibility

For more information please contact:



BOCK OPTRONICS INC.
14 Steinway Blvd., Unit 7
Toronto, Ontario M9W 6M6

Tel: (416) 674-2804
sales@bockoptronics.ca
www.bockoptronics.ca

AXIS M2026-LE Mk II Network Camera

Affordable, outdoor-ready camera with 4 MP and built-in IR

AXIS M2026-LE Mk II is a small, bullet-style camera delivering high-quality images in 4 MP resolution. The camera has built-in IR illumination that enables surveillance up to 15 m even at nighttime. The outdoor-ready camera is resistant to rough weather and the integrated sunshield protects against sun and rain. With a 130° field of view, a single camera gives full surveillance at low cost, and Axis Corridor Format provides efficient monitoring of corridors and shopping aisles. With Axis Zipstream technology storage and bandwidth requirements are significantly reduced and the camera supports video compression in both H.264 and H.265.

- > **Outdoor-ready, IP66- and NEMA 4X-rated**
- > **4 MP / Quad HD 1440p**
- > **Built-in IR illumination**
- > **130° field of view**
- > **Zipstream and H.265 video compression**



AXIS M2026-LE Mk II Network Camera

Models	AXIS M2026-LE Mk II AXIS M2026-LE Mk II Black	AXIS Video Motion Detection, active tampering alarm Supported AXIS Digital Autotracking, AXIS Cross Line Detection Support for AXIS Camera Application Platform enabling installation of third-party applications, see axis.com/acap
Camera		
Image sensor	1/3" progressive scan RGB CMOS	
Lens	M12 mount, Fixed iris, Fixed focus 2.4 mm, F2.2 Horizontal field of view: 130° Vertical field of view: 73°	
Day and night	Automatically removable infrared-cut filter	
Minimum illumination	Color: 0.3 lux at 50 IRE, F2.2 B/W: 0.06 lux at 50 IRE, F2.2 0 lux with IR illumination on	
Shutter speed	1/31500 s to 1/5 s	
Video		
Video compression	H.264 (MPEG-4 Part 10/AVC) Main and High Profiles H.265 (MPEG-H Part 2) Motion JPEG	
Resolution	2688x1520 to 320x240	
Frame rate	Up to 25/30 fps with power line frequency 50/60 Hz	
Video streaming	Multiple, individually configurable streams in H.264, H.265 and Motion JPEG Axis Zipstream technology in H.264 and H.265 Controllable frame rate and bandwidth VBR/MBR H.264/H.265	
Multi-view streaming	Up to 2 individually cropped out view areas in full frame rate	
Image settings	Compression, color, brightness, sharpness, contrast, white balance, exposure control, WDR, rotation: 0°, 90°, 180°, 270° including Corridor Format, text and image overlay, privacy masks, mirroring of images	
Pan/Tilt/Zoom	Digital PTZ	
Network		
Security	Password protection, IP address filtering, HTTPS ^a encryption, IEEE 802.1x (EAP-TLS) ^a network access control, digest authentication, user access log, centralized certificate management, brute force delay protection, signed firmware	
Supported protocols	IPv4, IPv6 USGv6, HTTP, HTTPS ^a , SSL/TLS ^a , QoS Layer 3 DiffServ, FTP, SFTP, CIFS/SMB, SMTP, Bonjour, UPnP™, SNMP v1/v2c/v3 (MIB-II), DNS, DynDNS, NTP, RTSP, RTP, TCP, UDP, IGMPv1/v2/v3, RTCP, ICMP, DHCP, ARP, SOCKS, SSH, LLDP, MQTT v3.1.1	
System integration		
Application Programming Interface	Open API for software integration, including VAPIX [®] and AXIS Camera Application Platform; specifications at axis.com One-click cloud connection ONVIF [®] Profile G, ONVIF [®] Profile S, and ONVIF [®] Profile T. Specifications at onvif.org	
Event triggers	Analytics, edge storage events	
Event actions	Record video: SD card and network share Upload of images or video clips: FTP, SFTP, HTTP, HTTPS, network share and email Pre- and post-alarm video or image buffering for recording or upload Notification: email, HTTP, HTTPS, TCP and SNMP trap Overlay text	
Data streaming	Event data	
Built-in installation aids	Pixel counter	
Analytics		
Applications	Included AXIS Motion Guard, AXIS Fence Guard, AXIS Loitering Guard	
General		
Casing	IP66-, NEMA 250 Type 4X-, and IK08-rated, polymer casing Encapsulated electronics, captive screws (Torx [®] 10) M2026-LE Mk II: Color: White NCS S 1002-B M2026-LE Mk II Black: Color: Black NCS S 9000-N	
Sustainability	PVC free	
Memory	512 MB RAM, 256 MB Flash	
Power	Power over Ethernet (PoE) IEEE 802.3af/802.3at Type 1 Class 3 Typical 5.1 W, max 7.9 W	
Connectors	RJ45 10BASE-T/100BASE-TX PoE	
IR illumination	Power-efficient, long-life 850 nm IR LEDs. Range of reach up to 15 m (50 ft) depending on scene	
Storage	Support for microSD/microSDHC/microSDXC card Support for recording to network-attached storage (NAS) For SD card and NAS recommendations see axis.com	
Operating conditions	-30 °C to 50 °C (-22 °F to 122 °F) Humidity 10–100% RH (condensing)	
Storage conditions	-40 °C to 65 °C (-40 °F to 149 °F) Humidity 5–95% RH (non-condensing)	
Approvals	EMC EN 55032 Class A, EN 55024, IEC 62471, EN 61000-6-1, EN 61000-6-2, FCC Part 15 Subpart B Class A, ICES-003 Class A, VCCI Class A, RCM AS/NZS CISPR 32 Class A, KCC KN32 Class A, KN35 Environment IEC 60068-2-1, IEC 60068-2-2, IEC 60068-2-78, IEC 60068-2-14, IEC 60068-2-6, IEC 60068-2-27, IEC/EN 62262 IK08, IEC/EN 60529 IP66, NEMA 250 Type 4X Safety IEC/EN/UL 62368-1, IS 13252 IEC/EN/UL 60950-22 Network NIST SP500-267	
Dimensions	Height, straight: 174 mm (6.9 in) Height, angled: 118 mm (4.6 in) ø 101 mm (4.0 in)	
Weight	0.5 kg (1.1 lb)	
Included accessories	Installation Guide, Windows [®] decoder 1-user license, Torx [®] L-key, Connector guard	
Optional accessories	AXIS T94B03L Recessed Mount, AXIS T94B02D Pendant kit, AXIS T94B01P Conduit Back Box, AXIS T94B02M J-Box/Gang Box Plate, Axis mounts, AXIS Surveillance microSDXC™ Card AXIS T94 mounts for various installations For more accessories, see axis.com/vms	
Video management software	AXIS Companion, AXIS Camera Station, video management software from Axis' Application Development Partners available at axis.com/vms	
Languages	English, German, French, Spanish, Italian, Russian, Simplified Chinese, Japanese, Korean, Portuguese, Traditional Chinese	
Warranty	5-year warranty, see axis.com/warranty	

a. This product includes software developed by the OpenSSL Project for use in the OpenSSL Toolkit. (www.openssl.org), and cryptographic software written by Eric Young (ey@cryptsoft.com).

Environmental responsibility:

axis.com/environmental-responsibility

For more information please contact:



BOCK OPTRONICS INC.
14 Steinway Blvd., Unit 7
Toronto, Ontario M9W 6M6

Tel: (416) 674-2804
sales@bockoptronics.ca
www.bockoptronics.ca

AXIS Q1798-LE Network Camera

4K without compromise

AXIS Q1798-LE features a powerful, ultra-high light-sensitive 4/3" image sensor that captures superior video and excellent details in resolutions up to 10 megapixels. Thanks to Axis Lightfinder 2.0, it delivers true colors in almost complete darkness. Including a Canon lens with focal length of 12-48 mm and horizontal field of view of 90°, it's ideal for wide, open areas such as airports, harbors or sports stadiums. It offers built-in analytics for proactive surveillance and includes audio in, Axis OptimizedIR, shock detection, auto-rotation as well as enhanced security functionality. Furthermore, Axis Zipstream supporting H.264/H.265 provides exceptional savings on bandwidth and storage requirements.

- > **4K / 10 MP resolutions**
- > **Ultra-high light-sensitive 4/3" sensor**
- > **12 – 48 mm Canon lens**
- > **Axis Lightfinder 2.0**
- > **Zipstream with support for H.264/H.265**



AXIS Q1798-LE Network Camera

Camera		Application Programming Interface	Open API for software integration, including VAPIX® and AXIS Camera Application Platform; specifications at axis.com One-click cloud connection ONVIF® Profile G, ONVIF® Profile S, and ONVIF® Profile T, specification at onvif.org
Image sensor	4/3" back-illuminated color CMOS	Onscreen controls	IR Illumination Electronic image stabilization Defogging Autofocus Wide dynamic range Video streaming indicator Day/night shift
Lens	Canon 12–48 mm, F1.7–4.0 4K Horizontal field of view: 90°–21° Vertical field of view: 49°–12° 10MP Horizontal field of view: 86°–20° Vertical field of view: 62°–15° Autofocus (zoom triggered), auto-iris, automatic day/night	Event conditions	Analytics, edge storage events MQTT subscribe Supervised external input, virtual inputs through API, shock detection, audio detection
Day and night	Automatically removable infrared-cut filter in day mode and infrared-band-pass filter 800–900 nm in night mode	Event actions	Pre- and post-alarm video buffering File upload: FTP, SFTP, HTTP, HTTPS, network share and email MQTT publish Notification: email, HTTP, HTTPS, TCP and SNMP trap
Minimum illumination	Color: 0.03 lux at 50 IRE F1.7 B/W: 0.006 lux at 50 IRE F1.7, 0 lux with IR illumination on	Data streaming	Event data
Shutter speed	1/45500 s to 2 s	Built-in installation aids	Remote zoom, pixel counter, leveling assistant, autorotation
System on chip (SoC)		Analytics	
Model	ARTPEC-7	AXIS Object Analytics	Object classes: humans, vehicles Trigger conditions: line crossing, object in area Up to 10 scenarios Metadata visualized with color-coded bounding boxes Polygon include/exclude areas Perspective configuration ONVIF Motion Alarm event
Memory	2048 MB RAM, 512 MB Flash	Applications	Included AXIS Object Analytics AXIS Video Motion Detection, active tampering alarm Supported AXIS Perimeter Defender, Support for AXIS Camera Application Platform enabling installation of third-party applications, see axis.com/acap
Compute capabilities	Machine learning processing unit (MLPU)	General	
Video		Casing	IP66-/IP67-, and NEMA 4X-rated, IK10 impact-resistant aluminum enclosure with integrated dehumidifying membrane, weathershield with black anti-glare coating Color: White NCS S 1002-B For repainting instructions of casing and impact on warranty, contact your Axis partner.
Video compression	H.264 (MPEG-4 Part 10/AVC) Baseline, Main and High Profiles H.265 (MPEG-H Part 2/HEVC) Main Profile Motion JPEG	Sustainability	PVC free, 2% recycled plastic
Resolution	3712x2784 10 MP to 160x90 3840x2160 4K to 160x90 Maximum pixel density with 4x optical zoom: 10 m (32 ft): 1036 px/m 25 m (82 ft): 414 px/m 50 m (164 ft): 207 px/m	Power	Power over Ethernet (PoE) IEEE 802.3at Type 2 Class 4 Typical 13.3 W, max 24.0 W 20–28 V DC, typical 12.9 W, max 23.2 W 20–24 V AC, typical 19.4 V A, max 33.0 V A
Frame rate	4K: Up to 25/30 fps (50/60 Hz) 10 MP: Up to 20 fps (50/60 Hz)	Connectors	Shielded RJ45 10BASE-T/100BASE-TX/1000BASE-T IDC punchdown connector AC and DC Power connector Terminal block for two configurable supervised inputs / digital outputs (12 V DC output, max. load 50 mA) 3.5 mm mic/line in
Video streaming	Multiple, individually configurable streams in H.264, H.265 and Motion JPEG Axis Zipstream technology in H.264 and H.265 Controllable frame rate and bandwidth VBR/ABR/MBR H.264/H.265 Video stream indicator	IR illumination	AXIS OptimizedIR with power-efficient, long-life 850 nm IR LED's with adjustable intensity. Range of reach more than 50 m (164 ft) in wide field of view and 100 m (328 ft) in full tele view, or more depending on the scene.
Image settings	Saturation, contrast, brightness, sharpness, Forensic WDR: Up to 120 dB depending on scene, defogging, white balance, day/night threshold, exposure mode, exposure zones, compression, mirroring of images, electronic image stabilization, barrel distortion correction, text and image overlay, dynamic text and image overlay, privacy masks Rotation: auto, 0°, 90°, 180°, 270° including Corridor Format Scene profiles: forensic, vivid, traffic overview	Storage	Support for microSD/microSDHC/microSDXC card Support for SD card encryption (AES-XTS-Plain64 256bit) Recording to network-attached storage (NAS) For SD card and NAS recommendations see axis.com
Pan/Tilt/Zoom	4x optical zoom, preset positions	Operating conditions	-40 °C to 60 °C (-40 °F to 140 °F) Maximum temperature according to NEMA TS 2 (2.2.7): 74 °C (165 °F) Humidity 10–100% RH (condensing)
Audio		System integration	
Audio streaming	Audio in, simplex		
Audio encoding	AAC-LC 8/16/32/48 kHz, G.711 PCM 8 kHz, G.726 ADPCM 8 kHz, Opus 8/16/48 kHz, LPCM Configurable bit rate		
Audio input/output	External microphone input, line input, digital input with ring power, balanced microphone, balanced input, automatic gain control		
Network			
Security	Password protection, IP address filtering, HTTPS ^a encryption, IEEE 802.1x (EAP-TLS) ^a network access control, digest authentication, user access log, centralized certificate management, signed firmware, secure boot Brute force delay protection		
Supported protocols	IPv4, IPv6 USGv6, ICMPv4/ICMPv6, HTTP, HTTP/2, HTTPS ^a , TLS ^a , QoS Layer 3 DiffServ, FTP, SFTP, CIFS/SMB, SMTP, mDNS (Bonjour), UPnP [®] , SNMP v1/v2c/v3 (MIB-II), DNS/DNSv6, DDNS, NTP, RTSP, RTP, SRTP, TCP, UDP, IGMPv1/v2/v3, RTCP, ICMP, DHCPv4/v6, ARP, SOCKS, SSH, LLDP, CDP, MQTT v3.1.1, Syslog, Link-Local address (ZeroConf)		

Storage conditions	-40 °C to 65 °C (-40 °F to 149 °F) Humidity 5-95% RH (non-condensing)	Included accessories	Installation Guide, Windows® decoder 1-user license, connector kit, Resistorx® L-key RJ45 patch cable
Approvals	EMC EN 55032 Class A, EN 50121-4, IEC 62236-4, EN 55024, EN 61000-6-1, EN 61000-6-2, FCC Part 15 Subpart B Class A, ICES-003 Class A, VCCI Class A, RCM AS/NZS CISPR 32 Class A, KCC KN32 Class A, KN35, EAC Safety IEC/EN/UL 62368-1, IEC/EN/UL 60950-22, EN/IEC 62471 IS 13252 Environment IEC 60068-2-1, IEC 60068-2-2, IEC 60068-2-6, IEC 60068-2-14, IEC 60068-2-27, IEC 60068-2-78, IEC/EN 62262 IK10, IEC/EN 60529 IP66/IP67, NEMA 250 Type 4X, NEMA TS 2 (2.2.7-2.2.9) Network NIST SP500-267	Optional accessories	AXIS T8604 Media Converter Switch AXIS T91B47 Pole Mount, AXIS T94P01B Corner Bracket For more accessories, see axis.com
Dimensions	Length: 360 mm (14 11/64 in) ø 147 mm (5 13/16 in)	Video management software	AXIS Companion, AXIS Camera Station, video management software from Axis' Application Development Partners available at axis.com/vms
Weight	2.55 kg (5.3 lb)	Languages	English, German, French, Spanish, Italian, Russian, Simplified Chinese, Japanese, Korean, Portuguese, Traditional Chinese
		Warranty	5-year warranty, see axis.com/warranty

a. *This product includes software developed by the OpenSSL Project for use in the OpenSSL Toolkit. (openssl.org), and cryptographic software written by Eric Young (eay@cryptsoft.com).*

Environmental responsibility:
axis.com/environmental-responsibility

For more information please contact:



BOCK OPTRONICS INC.

14 Steinway Blvd., Unit 7
Toronto, Ontario M9W 6M6

Tel: (416) 674-2804
sales@bockoptronics.ca
www.bockoptronics.ca

AXIS Q1786-LE Network Camera

Robust, first-class 4 MP video with 32x optical zoom

AXIS Q1786-LE Network Camera is an all-integrated camera delivering 4 megapixel resolution and 32x optical zoom for easy and flexible installation at any distance as well as detailed video for identification. With a wide temperature range, impact resistance and IP66, IP67 and NEMA 4X ratings, this robust and reliable camera is ready for tough environments. Lightfinder, Forensic WDR and OptimizedIR with 80 m (262 ft) range ensure details in challenging light conditions and darkness. AXIS Q1786-LE offers built-in analytics for proactive surveillance, corridor format and audio in for video with sound. Furthermore, Axis Zipstream saves bandwidth while keeping high video quality.

- > **4 MP / Quad HD 1440p at up to 60 fps**
- > **-40 °C to 60 °C (-40 °F to 140 °F)**
- > **OptimizedIR with 80 m (262 ft) range**
- > **Electronic Image Stabilization**
- > **AXIS Guard Suite included**



AXIS Q1786-LE Network Camera

Camera		Defogging
Image sensor	1/1.8" progressive scan RGB CMOS	Wide dynamic range
Lens	4.3–137 mm, F1.4–4.0 Horizontal field of view: 60°–2.3° Vertical field of view: 39°–1.3° Autofocus, auto-iris, automatic day/night Thread for 62 mm filters, max filter thickness: 5 mm	IR illumination
Day and night	Automatically removable infrared-cut filter in day mode and infrared-pass filter 720 nm in night mode	Autofocus
Minimum illumination	Color: 0.18 lux at 50 IRE F1.4 B/W: 0.04 lux at 50 IRE F1.4 0 lux with IR illumination on	Event triggers
Shutter speed	1/100000 s to 2 s	Analytics, edge storage events
System on chip (SoC)		Supervised external input, virtual inputs through API, shock detection, audio detection
Model	ARTPEC-6	MQTT subscribe
Memory	1024 MB RAM, 512 MB Flash	Event actions
Video		Pre- and post-alarm video buffering
Video compression	H.264 (MPEG-4 Part 10/AVC) Baseline, Main and High Profiles Motion JPEG	File upload: FTP, SFTP, HTTP, HTTPS, network share and email
Resolution	2560x1440 to 160x120 Maximum pixel density with 32x optical zoom: 25 m (82 ft): 2551 px/m 50 m (164 ft): 1275 px/m 250 m (820 ft): 255 px/m	MQTT publish
Frame rate	With WDR: Up to 25/30 fps (50/60 Hz) in all resolutions Without WDR: Up to 50/60 fps (50/60 Hz) in all resolutions	Notification: email, HTTP, HTTPS, TCP and SNMP trap
Video streaming	Multiple, individually configurable streams in H.264 and Motion JPEG Axis Zipstream technology in H.264 Controllable frame rate and bandwidth VBR/ABR/MBR H.264	Data streaming
Image settings	Saturation, contrast, brightness, sharpness, Forensic WDR: Up to 120 dB depending on scene, defogging, white balance, day/night threshold, exposure mode, exposure zones, compression, mirroring of images, electronic image stabilization, barrel distortion correction, text and image overlay, dynamic text and image overlay, privacy masks Rotation: auto, 0°, 90°, 180°, 270° including Corridor Format Scene profiles: forensic, vivid, traffic overview, backlit entrance	Event data
Pan/Tilt/Zoom	32x optical zoom, preset positions	Built-in installation aids
Audio		Remote zoom, pixel counter, leveling assistant, autorotation
Audio streaming	Audio in, simplex	Analytics
Audio encoding	AAC-LC 8/16/32/48 kHz, G.711 PCM 8 kHz, G.726 ADPCM 8 kHz, Opus 8/16/48 kHz, LPCM Configurable bit rate	Applications
Audio input/output	Automatic gain control, external microphone input, line input, digital input with ring power, balanced microphone, balanced input	Included
Network		AXIS Motion Guard, AXIS Fence Guard, AXIS Loitering Guard
Security	Password protection, IP address filtering, HTTPS ^a encryption, IEEE 802.1x (EAP-TLS) ^a network access control, digest authentication, user access log, centralized certificate management, signed firmware, brute force delay protection	Supported
Supported protocols	IPv4, IPv6 USGv6, ICMPv4/ICMPv6, HTTP, HTTP/2, HTTPS ^a , TLS ^a , QoS Layer 3 DiffServ, FTP, SFTP, CIFS/SMB, SMTP, mDNS (Bonjour), UPnP [®] , SNMP v1/v2c/v3 (MIB-II), DNS/DNSv6, DDNS, NTP, RTSP, RTP, SRTP, TCP, UDP, IGMPv1/v2/v3, RTCP, ICMP, DHCPv4/v6, ARP, SOCKS, SSH, LLDP, CDP, MQTT v3.1.1, Syslog, Link-Local address (ZeroConf)	AXIS Perimeter Defender, AXIS Cross Line Detection
System integration		Support for AXIS Camera Application Platform enabling installation of third-party applications, see axis.com/acap
Application Programming Interface	Open API for software integration, including VAPIX [®] and AXIS Camera Application Platform; specifications at axis.com AXIS Video Hosting System (AVHS) with One-Click Connection One-click cloud connection ONVIF [®] Profile G, ONVIF [®] Profile M, ONVIF [®] Profile S, and ONVIF [®] Profile T, specification at onvif.org	General
Onscreen controls	Electronic image stabilization Day/night shift	Casing
		IP66-, IP67-, and NEMA 4X-rated, IK10 impact-resistant aluminum enclosure with integrated dehumidifying membrane, IK08 impact-resistant glass front window, weathershield with black anti-glare coating Color: White NCS S 1002-B For repainting instructions of casing and impact on warranty, contact your Axis partner.
		Sustainability
		PVC free, 2% recycled plastic
		Memory
		1024 MB RAM, 512 MB Flash
		Power
		Power over Ethernet (PoE) IEEE 802.3af/802.3at Type 1 Class 3 Typical 8.6 W, max 12.95 W 20–28 V DC, typical 8.6 W, max 13.8 W 20–24 V AC, typical 12.6 V A, max 20 V A
		Connectors
		Shielded RJ45 10BASE-T/100BASE-TX PoE IDC punchdown connector DC Power connector Terminal block for two configurable supervised inputs / digital outputs (12 V DC output, max. load 50 mA) 3.5 mm mic/line in
		IR illumination
		Optimized IR with power-efficient, long-life 850 nm IR LED's with adjustable angle of illumination and intensity. Range of reach 30 m (98 ft) in wide field of view and 80 m (262 ft) in full tele view, or more depending on the scene
		Storage
		Support for microSD/microSDHC/microSDXC card Support for SD card encryption (AES-XTS-Plain64 256bit) Recording to network-attached storage (NAS) For SD card and NAS recommendations see axis.com
		Operating conditions
		-40 °C to 60 °C (-40 °F to 140 °F) Maximum temperature according to NEMA TS 2 (2.2.7): 74 °C (165 °F) Humidity 10–100% RH (condensing)
		Storage conditions
		-40 °C to 65 °C (-40 °F to 149 °F) Humidity 5–95% RH (non-condensing)
		Approvals
		EMC EN 55032 Class A, EN 50121-4, IEC 62236-4, EN 55024, EN 61000-6-1, EN 61000-6-2, FCC Part 15 Subpart B Class A, ICES-003 Class A, VCCI Class A, RCM AS/NZS CISPR 32 Class A, KCC KN32 Class A, KN35, EAC
		Safety
		IEC/EN/UL 62368-1, IEC/EN/UL 60950-22, EN/IEC 62471 IS 13252
		Environment
		EN 50581, IEC 60068-2-1, IEC 60068-2-2, IEC 60068-2-6, IEC 60068-2-14, IEC 60068-2-30, IEC 60068-2-27, IEC 60068-2-78, IEC/EN 60529 IP66, IP67, IEC/EN 62262 IK10 body, IK08 glass, NEMA 250 Type 4X, NEMA TS 2 (2.2.7-2.2.9)
		Network

	NIST SP500-267
Dimensions	Length: 386 mm (15 3/16 in) ø 147 mm (5 13/16 in)
Weight	2.4 kg (5.3 lb)
Included accessories	Installation guide, Windows® decoder 1-user license, connector kit, Resistorx® L-key RJ45 patch cable
Optional accessories	AXIS T8604 Media Converter Switch AXIS T91A47 Pole Mount, AXIS T94P01B Corner Bracket AXIS Q17 Front Window Kit B (IK10 impact-resistant plastic front window) For more accessories, see axis.com

Video management software	AXIS Companion, AXIS Camera Station, video management software from Axis Application Development Partners available at axis.com/vms
Languages	English, German, French, Spanish, Italian, Russian, Simplified Chinese, Japanese, Korean, Portuguese, Traditional Chinese
Warranty	5-year warranty, see axis.com/warranty

- a. *This product includes software developed by the OpenSSL Project for use in the OpenSSL Toolkit. (openssl.org), and cryptographic software written by Eric Young (eay@cryptsoft.com).*

Environmental responsibility:

axis.com/environmental-responsibility

For more information please contact:



BOCK OPTONICS INC.

14 Steinway Blvd., Unit 7
Toronto, Ontario M9W 6M6

Tel: (416) 674-2804
sales@bockoptronics.ca
www.bockoptronics.ca

AXIS Q1785-LE Network Camera

Robust, first-class 2 MP video with 32x optical zoom

AXIS Q1785-LE Network Camera is an all-integrated camera delivering 2 megapixel resolution and 32x optical zoom for easy and flexible installation at any distance as well as detailed video for identification. With a wide temperature range, impact resistance and IP66, IP67 and NEMA 4X ratings, this reliable camera is ready for tough environments. Lightfinder, Forensic WDR and OptimizedIR with 80 m (262 ft) range ensure details in challenging light conditions and darkness. AXIS Q1785-LE offers built-in analytics for proactive surveillance, corridor format and audio in for video with sound. Furthermore, Axis Zipstream saves bandwidth while keeping high video quality.

- > **HDTV 1080p at up to 60 fps**
- > **-40 °C to 60 °C (-40 °F to 140 °F)**
- > **OptimizedIR with 80 m (262 ft) range**
- > **Electronic Image Stabilization**
- > **AXIS Guard Suite included**



AXIS Q1785-LE Network Camera

Camera		Defogging
Image sensor	1/2.8" progressive scan RGB CMOS	Wide dynamic range
Lens	4.3–137 mm, F1.4–4.0 Horizontal field of view: 60°–2.3° Vertical field of view: 39°–1.3° Autofocus, auto-iris, automatic day/night Thread for 62 mm filters, max filter thickness: 5 mm	IR illumination
Day and night	Automatically removable infrared-cut filter in day mode and infrared-pass filter 720 nm in night mode	Autofocus
Minimum illumination	Color: 0.16 lux at 50 IRE F1.4 B/W: 0.03 lux at 50 IRE F1.4 0 lux with IR illumination on	Event triggers
Shutter speed	1/66500 s to 1 s	Analytics, edge storage events
System on chip (SoC)		Supervised external input, virtual inputs through API, shock detection, audio detection
Model	ARTPEC-6	MQTT subscribe
Memory	1024 MB RAM, 512 MB Flash	Event actions
Video		Pre- and post-alarm video buffering
Video compression	H.264 (MPEG-4 Part 10/AVC) Baseline, Main and High Profiles Motion JPEG	File upload: FTP, SFTP, HTTP, HTTPS, network share and email
Resolution	1920x1080 HDTV 1080p to 160x120 Maximum pixel density with 32x optical zoom: 25 m (82 ft): 1912 px/m 50 m (164 ft): 956 px/m 250 m (820 ft): 191 px/m	MQTT publish
Frame rate	With WDR: Up to 25/30 fps (50/60 Hz) in all resolutions Without WDR: Up to 50/60 fps (50/60 Hz) in all resolutions	Notification: email, HTTP, HTTPS, TCP and SNMP trap
Video streaming	Multiple, individually configurable streams in H.264 and Motion JPEG Axis Zipstream technology in H.264 Controllable frame rate and bandwidth VBR/ABR/MBR H.264	Data streaming
Image settings	Saturation, contrast, brightness, sharpness, Forensic WDR: Up to 120 dB depending on scene, defogging, white balance, day/night threshold, exposure mode, exposure zones, compression, mirroring of images, electronic image stabilization, barrel distortion correction, text and image overlay, dynamic text and image overlay, privacy masks Rotation: auto, 0°, 90°, 180°, 270° including Corridor Format Scene profiles: forensic, vivid, traffic overview, backlit entrance	Event data
Pan/Tilt/Zoom	32x optical zoom, preset positions	Built-in installation aids
Audio		Remote zoom, pixel counter, leveling assistant, autorotation
Audio streaming	Audio in, simplex	Analytics
Audio encoding	AAC-LC 8/16/32/48 kHz, G.711 PCM 8 kHz, G.726 ADPCM 8 kHz, Opus 8/16/48 kHz, LPCM Configurable bit rate	Applications
Audio input/output	Automatic gain control, external microphone input, line input, digital input with ring power, balanced microphone, balanced input	Included
Network		AXIS Motion Guard, AXIS Fence Guard, AXIS Loitering Guard
Security	Password protection, IP address filtering, HTTPS ^a encryption, IEEE 802.1x (EAP-TLS) ^a network access control, digest authentication, user access log, centralized certificate management, signed firmware, brute force delay protection	Supported
Supported protocols	IPv4, IPv6 USGv6, ICMPv4/ICMPv6, HTTP, HTTP/2, HTTPS ^a , TLS ^a , QoS Layer 3 DiffServ, FTP, SFTP, CIFS/SMB, SMTP, mDNS (Bonjour), UPnP [®] , SNMP v1/v2c/v3 (MIB-II), DNS/DNSv6, DDNS, NTP, RTSP, RTP, SRTP, TCP, UDP, IGMPv1/v2/v3, RTCP, ICMP, DHCPv4/v6, ARP, SOCKS, SSH, LLDP, CDP, MQTT v3.1.1, Syslog, Link-Local address (ZeroConf)	AXIS Perimeter Defender, AXIS Cross Line Detection Support for AXIS Camera Application Platform enabling installation of third-party applications, see axis.com/acap
System integration		General
Application Programming Interface	Open API for software integration, including VAPIX [®] and AXIS Camera Application Platform; specifications at axis.com AXIS Video Hosting System (AVHS) with One-Click Connection One-click cloud connection ONVIF [®] Profile G, ONVIF [®] Profile M, ONVIF [®] Profile S, and ONVIF [®] Profile T, specification at onvif.org	Casing
Onscreen controls	Electronic image stabilization Day/night shift	IP66-, IP67-, and NEMA 4X-rated, IK10 impact-resistant aluminum enclosure with integrated dehumidifying membrane, IK08 impact-resistant glass front window, weathershield with black anti-glare coating Color: White NCS S 1002-B For repainting instructions of casing and impact on warranty, contact your Axis partner.
		Sustainability
		PVC free, 2% recycled plastic
		Memory
		1024 MB RAM, 512 MB Flash
		Power
		Power over Ethernet (PoE) IEEE 802.3af/802.3at Type 1 Class 3 Typical 7.7 W, max 12.95 W 20–28 V DC, typical 7.8 W, max 13.5 W 20–24 V AC, typical 12.4 V A, max 20 V A
		Connectors
		Shielded RJ45 10BASE-T/100BASE-TX PoE IDC punchdown connector DC Power connector Terminal block for two configurable supervised inputs / digital outputs (12 V DC output, max. load 50 mA) 3.5 mm mic/line in
		IR illumination
		Optimized IR with power-efficient, long-life 850 nm IR LED's with adjustable angle of illumination and intensity. Range of reach 30 m (98 ft) in wide field of view and 80 m (262 ft) in full tele view, or more depending on the scene
		Storage
		Support for microSD/microSDHC/microSDXC card Support for SD card encryption (AES-XTS-Plain64 256bit) Recording to network-attached storage (NAS) For SD card and NAS recommendations see axis.com
		Operating conditions
		-40 °C to 60 °C (-40 °F to 140 °F) Maximum temperature according to NEMA TS 2 (2.2.7): 74 °C (165 °F) Humidity 10–100% RH (condensing)
		Storage conditions
		-40 °C to 65 °C (-40 °F to 149 °F) Humidity 5–95% RH (non-condensing)
		Approvals
		EMC EN 55032 Class A, EN 50121-4, IEC 62236-4, EN 55024, EN 61000-6-1, EN 61000-6-2, FCC Part 15 Subpart B Class A, ICES-003 Class A, VCCI Class A, RCM AS/NZS CISPR 32 Class A, KCC KN32 Class A, KN35, EAC Safety IEC/EN/UL 62368-1, IEC/EN/UL 60950-22, EN/IEC 62471 IS 13252 Environment EN 50581, IEC 60068-2-1, IEC 60068-2-2, IEC 60068-2-6, IEC 60068-2-14, IEC 60068-2-30, IEC 60068-2-27, IEC 60068-2-78, IEC/EN 60529 IP66, IP67, IEC/EN 62262 IK10 body, IK08 glass, NEMA 250 Type 4X, NEMA TS 2 (2.2.7-2.2.9) Network

	NIST SP500-267
Dimensions	Length: 386 mm (15 3/16 in) ø 147 mm (5 13/16 in)
Weight	2.4 kg (5.3 lb)
Included accessories	Installation guide, Windows® decoder 1-user license, connector kit, Resistorx® L-key RJ45 patch cable
Optional accessories	AXIS T8604 Media Converter Switch AXIS T91A47 Pole Mount, AXIS T94P01B Corner Bracket AXIS Q17 Front Window Kit B (IK10 impact-resistant plastic front window) For more accessories, see axis.com

Video management software	AXIS Companion, AXIS Camera Station, video management software from Axis Application Development Partners available at axis.com/vms
Languages	English, German, French, Spanish, Italian, Russian, Simplified Chinese, Japanese, Korean, Portuguese, Traditional Chinese
Warranty	5-year warranty, see axis.com/warranty

- a. *This product includes software developed by the OpenSSL Project for use in the OpenSSL Toolkit. (openssl.org), and cryptographic software written by Eric Young (eay@cryptsoft.com).*

Environmental responsibility:

axis.com/environmental-responsibility

For more information please contact:



BOCK OPTONICS INC.

14 Steinway Blvd., Unit 7
Toronto, Ontario M9W 6M6

Tel: (416) 674-2804
sales@bockoptronics.ca
www.bockoptronics.ca

AXIS Q1715 Block Camera

High performance with endless options

AXIS Q1715 delivers HDTV 1080p at 60 fps and 21x optical zoom for all the details. With a deep learning processing unit, it's possible to take advantage of intelligent tailor-made applications based on deep learning on the edge. It comes with AXIS Object Analytics for highly nuanced object classification and reliable detection with fewer false positives. And, it provides analytics metadata based on deep learning on the edge. Lightweight in design, it's easy to install in accessory housings and casings. It offers support for 2-way audio and supervised I/O. Furthermore, it features built-in cybersecurity features to prevent unauthorized access and safeguard your system.

- > [1080p at 60 fps with 21x zoom](#)
- > [Support for analytics with deep learning](#)
- > [Granular object classification](#)
- > [Ideal for accessory housings and casings](#)
- > [HDMI and HD-SDI output](#)



AXIS Q1715 Block Camera

Camera	
Image sensor	1/2.8" progressive scan RGB CMOS
Lens	Varifocal, 4–84.6 mm, F1.6–F4.5 Horizontal field of view: 76°–3.6° Vertical field of view: 42°–2.2° Autofocus, P-Iris control
Day and night	Automatically removable infrared-cut filter
Minimum illumination	1080p 25/30 fps with Forensic WDR and Lightfinder 2.0: Color: 0.1 lux at 50 IRE F1.5 B/W: 0.02 lux at 50 IRE F1.5 1080p 50/60 fps with Forensic WDR and Lightfinder 2.0: Color: 0.2 lux at 50 IRE F1.5 B/W: 0.04 lux at 50 IRE F1.5
Shutter speed	1/66500 s to 2 s
Pan/Tilt/Zoom	Zoom: 21x optical 100 preset positions, control queue, adjustable zoom speed
System on chip (SoC)	
Model	ARTPEC-7
Memory	2048 MB RAM, 1024 MB Flash
Compute capabilities	Deep learning processing unit (DLPU)
Video	
Video compression	H.264 (MPEG-4 Part 10/AVC) Baseline, Main and High Profiles H.265 (MPEG-H Part 2/HEVC) Main Profile Motion JPEG
Resolution	1920x1080 HDTV 1080p to 160x90
Frame rate	Up to 60/50 fps (60/50 Hz) in all resolutions HDMI and HD-SDI are limited to 30 fps in 1080p
Video streaming	Multiple, individually configurable streams in H.264, H.265 and Motion JPEG Axis Zipstream technology in H.264 and H.265 Controllable frame rate and bandwidth VBR/ABR/MBR H.264/H.265 Video streaming indicator
Image settings	Saturation, contrast, brightness, sharpness, Forensic WDR: up to 120 dB depending on scene, white balance, day/night threshold, tone mapping, local contrast, EIS, exposure mode, exposure zones, defogging, compression, rotation: auto, 0°, 90°, 180°, 270° including Corridor Format, dynamic text and image overlays, polygon privacy mask, mirroring of images Scene profiles: forensic, vivid, traffic overview
Pan/Tilt/Zoom	Uploadable PTZ driver
Audio	
Audio encoding	SDI: AES3 24 bit, 48 kHz HDMI: LPCM 24 bit, 48 kHz Network: AAC-LC 8/16/32/44.1/48 kHz, G.711 PCM 8 kHz, G.726 ADPCM 8 kHz, Opus 8/16/48 kHz, LPCM 48 kHz
Audio input/output	External microphone input or line input, ring power
Network	
Security	Password protection, IP address filtering, HTTPS ^a encryption, IEEE 802.1x (EAP-TLS) ^a network access control, digest authentication, user access log, centralized certificate management, brute force delay protection, signed firmware, secure boot, protection of cryptographic keys with FIPS 140-2 certified TPM 2.0 module, Axis Edge Vault with Axis device ID
Supported protocols	IPv4, IPv6 USGv6, ICMPv4/ICMPv6, HTTP, HTTPS ^a , HTTP/2, TLS ^a , QoS Layer 3 DiffServ, FTP, SFTP, CIFS/SMB, SMTP, mDNS (Bonjour), UPnP ^b , SNMP v1/v2c/v3 (MIB-II), DNS/DNSv6, DDNS, NTP, RTSP, RTP, SRTP, TCP, UDP, IGMPv1/v2/v3, RTCP, DHCPv4/v6, SOCKS, SSH, SIP, LLDP, CDP, MQTT v3.1.1, Syslog, Link-Local address (ZeroConf)
System integration	
Application Programming Interface	Open API for software integration, including VAPIX [®] and AXIS Camera Application Platform; specifications at axis.com One-click cloud connection ONVIF [®] Profile G, ONVIF [®] Profile M, ONVIF [®] Profile S, and ONVIF [®] Profile T, specification at onvif.org

	Support for Session Initiation Protocol (SIP) for integration with Voice over IP (VoIP) systems, peer to peer or integrated with SIP/PBX.
Event conditions	
	Audio: audio clip playing, audio detection Device status: above operating temperature, above or below operating temperature, below operating temperature, IP address removed, network lost, new IP address, ring power overcurrent protection, storage failure, system ready, within operating temperature, shock detection Digital audio: digital signal contains Axis metadata, digital signal has invalid sample rate, digital signal missing, digital signal OK Edge storage: recording ongoing, storage disruption I/O: digital input, manual trigger, virtual input MQTT subscribe PTZ: PTZ malfunctioning, PTZ movement, PTZ preset position reached, PTZ ready Scheduled and recurring: scheduled event Video: average bitrate degradation, day-night mode, live stream open, tampering
Event actions	
	Record video: SD card and network share MQTT publish Upload of images or video clips: FTP, SFTP, HTTP, HTTPS, network share and email Pre- and post-alarm video or image buffering for recording or upload Notification: email, HTTP, HTTPS, TCP and SNMP trap PTZ: PTZ preset, start/stop guard tour Overlay text, external output activation, play audio clip, zoom preset, day/night mode, make call
Data streaming	
	Event data
Built-in installation aids	
	Leveling guide, pixel counter, license plate capture assistant
Analytics	
AXIS Object Analytics	Object classes: humans, vehicles (types: cars, buses, trucks, bikes) Trigger conditions: line crossing, object in area Up to 10 scenarios Metadata visualized with color-coded bounding boxes Polygon include/exclude areas Perspective configuration ONVIF Motion Alarm event
Applications	
	Included AXIS Object Analytics AXIS Video Motion Detection Supported AXIS Audio Spectrum Visualizer Support for AXIS Camera Application Platform enabling installation of third-party applications, see axis.com/acap
General	
Casing	Aluminum and plastic casing Color: NCS S 9000-N
Sustainability	PVC free, BFR/CFR free
Power	Power over Ethernet (PoE) IEEE 802.3at Type 2 Class 4 10–28 V DC, typical 12 W, max 13.5 W
Connectors	Shielded RJ45 10BASE-T/100BASE-TX/1000BASE-T PoE I/O: 6-pin 2.5 mm terminal block for four configurable inputs RS485/RS422, 2 pcs, 2 pos, full duplex, terminal block 3.5 mm mic/line in, 3.5 mm line out DC input HDMI Type A, BNC for SDI I2C for AXIS TQ1809-LE Housing
Storage	Support for microSD/microSDHC/microSDXC card Support for SD card encryption (AES-XTS-Plain64 256bit) Recording to network-attached storage (NAS) For SD card and NAS recommendations see axis.com
Operating conditions	-20 °C to 50 °C (-4 °F to 122 °F) Humidity 10–85% RH (non-condensing)
Storage conditions	-40 °C to 65 °C (-40 °F to 149 °F) Humidity 5–95% RH (non-condensing)

Approvals	EMC EN 55035, EN 55032 Class A, EN 61000-3-2, EN 61000-3-3, EN 61000-6-1, EN 61000-6-2, FCC Part 15 Subpart B Class A, ICES-3(A)/NMB-3(A), KS C 9832 Class A, KS C 9835, RCM AS/NZS CISPR 32 Class A, VCCI Class A Safety CAN/CSA C22.2 No. 62368-1, IEC/EN/UL 62368-1 Environment IEC 60068-2-1, IEC 60068-2-2, IEC 60068-2-6, IEC 60068-2-14, IEC 60068-2-27, IEC 60068-2-78 Network NIST SP500-267	Optional accessories AXIS TQ1809-LE Housing T92G ^b AXIS T8415 Wireless Installation Tool AXIS Surveillance Cards For more accessories, see axis.com
Dimensions	Height: 66 x 80 x 195 mm (2.6 x 3.1 x 7.7 in)	Video management software AXIS Companion, AXIS Camera Station, video management software from Axis Application Development Partners available at axis.com/vms
Weight	650 g (1.4 lb)	Languages English, German, French, Spanish, Italian, Russian, Simplified Chinese, Japanese, Korean, Portuguese, Polish, Traditional Chinese
Included accessories	Installation guide, Windows [®] decoder 1-user license, stand, connector kit, TORX [®] T20 screw driver, RESISTORX [®] L-key, terminal block connector	Warranty 5-year warranty, see axis.com/warranty

- a. *This product includes software developed by the OpenSSL Project for use in the OpenSSL Toolkit. (openssl.org), and cryptographic software written by Eric Young (eay@cryptsoft.com).*
- b. *The HDMI and SDI outputs are not available when the camera is mounted in the TQ1809-LE Housing.*

Environmental responsibility:

axis.com/environmental-responsibility

For more information please contact:



BOCK OPTONICS INC.

14 Steinway Blvd., Unit 7
Toronto, Ontario M9W 6M6

Tel: (416) 674-2804
sales@bockoptronics.ca
www.bockoptronics.ca

AXIS Q1700-LE License Plate Camera

Dedicated camera for sharp images at high speeds

AXIS Q1700-LE License Plate Camera delivers clear and sharp license plate images from vehicles moving at speeds of up to 130 km/h (81 mph) day and night. Thanks to a built-in license plate capture assistant, the camera is easy to setup and image settings are automatically adjusted to fit speed, installation height and vehicle distance in a specific traffic scene. A robust design ensures reliable operation in extreme weather conditions and in wind forces up to hurricane level. The camera is designed for usage with third-party edge or server-based software to perform license plate recognition and trigger actions.

- > Sharp license plates in HDTV 1080p / 2 MP
- > Optimized IR range up to 50 m (164 ft)
- > 8x optical zoom
- > Horizontal field of view of 16° - 2.3°
- > Designed for third-party software



AXIS Q1700-LE License Plate Camera

Camera		Security	Password protection, IP address filtering, HTTPS ^a encryption, IEEE 802.1x (EAP-TLS) ^a network access control, digest authentication, user access log, centralized certificate management, signed firmware, brute force delay protection
Image sensor	1/2.8" progressive scan RGB CMOS	Supported protocols	IPv4, IPv6 USGv6, ICMPv4/ICMPv6, HTTP, HTTP/2, HTTPS ^a , TLS ^a , QoS Layer 3 DiffServ, FTP, SFTP, CIFS/SMB, SMTP, mDNS (Bonjour), UPnP [®] , SNMP v1/v2c/v3 (MIB-II), DNS/DNSv6, DDNS, NTP, RTSP, RTP, SRTP, TCP, UDP, IGMPv1/v2/v3, RTCP, ICMP, DHCPv4/v6, ARP, SOCKS, SSH, LLDP, CDP, MQTT v3.1.1, Syslog, Link-Local address (ZeroConf)
Lens	18–137 mm, F2.9–4.0 Horizontal field of view: 16°–2.3° Vertical field of view: 9.6°–1.3° Installation focus, auto-iris, automatic day/night Thread for 62 mm filters, max filter thickness: 5 mm	System integration	Application Programming Interface Open API for software integration, including VAPIX [®] and AXIS Camera Application Platform; specifications at axis.com One-click cloud connection ONVIF [®] Profile G, ONVIF [®] Profile M, ONVIF [®] Profile S, and ONVIF [®] Profile T, specification at onvif.org
Day and night	Automatically removable infrared-cut filter in day mode and infrared-pass filter 720 nm in night mode	Event conditions	Analytics, edge storage events MQTT subscribe Supervised external input, virtual inputs through API, shock detection, video motion detection, audio detection, active tampering
Minimum illumination	Color: 0.16 lux at 50 IRE F1.4 B/W: 0.03 lux at 50 IRE F1.4, 0 lux with IR illumination on	Event actions	Pre- and post-alarm video buffering File upload: FTP, SFTP, HTTP, HTTPS, network share and email MQTT publish Notification: email, HTTP, HTTPS, TCP and SNMP trap
Shutter speed	1/66500 s to 1 s	Data streaming	Event data
License Plate Capture		Built-in installation aids	License plate capture assistant, remote zoom, pixel counter, leveling assistant, autorotation
Detection range	Day: 20–100 m (66–328 ft) Night: 20–50 m (66–164 ft) Night detection range up to 100 m (328 ft) with optional accessory AXIS T90D20 IR-LED Illuminator	Analytics	Applications Included AXIS Motion Guard, AXIS Fence Guard, AXIS Loitering Guard Gatekeeper Support for AXIS Camera Application Platform enabling installation of third-party applications, see axis.com/acap
IR illumination	OptimizedIR with power-efficient, long-life 850 nm IR LED's with adjustable angle of illumination and intensity. Range of reach 40 m (131 ft) in wide field of view and 50 m (164 ft) in full tele view, or more depending on the scene	General	Casing IP66- and NEMA 4X-rated, IK10 impact-resistant aluminum enclosure with integrated dehumidifying membrane, IK08 impact-resistant glass front window, weathershield with black anti-glare coating Wind survivability 60 m/s (134 mph) Color: Dark Gray NCS S 5502-B (Weathershield: Black)
Vehicle speed	Up to 130 km/h (81 mph) with optional edge analytics Up to 250 km/h (155 mph) with server based analytics	Sustainability	PVC free, 5% recycled plastic
Coverage	Single lane with optional edge analytics Two lanes with server based analytics	Power	Power over Ethernet (PoE) IEEE 802.3af/802.3at Type 1 Class 3 Typical 7.7 W, max 12.95 W 20–28 V DC, typical 7.8 W, max 13.5 W 20–24 V AC, typical 12.4 V A, max 20 V A
Installation	Mounting height: Up to 10 m (33 ft) Distance from road: Up to 10 m (33 ft) Camera detects tilt and roll angle automatically Built-in licence plate capture assistant optimizes video settings based on mounting height, distance to vehicle, and expected vehicle speed	Connectors	Shielded RJ45 10BASE-T/100BASE-TX PoE IDC punchdown connector DC Power connector Terminal block for two configurable supervised inputs / digital outputs (12 V DC output, max. load 50 mA) 3.5 mm mic/line in
System on chip (SoC)		IR illumination	OptimizedIR with power-efficient, long-life 850 nm IR LED's with adjustable angle of illumination and intensity. Range of reach 40 m (131 ft) in wide field of view and 50 m (164 ft) in full tele view, or more depending on the scene
Model	ARTPEC-6	Storage	Support for microSD/microSDHC/microSDXC card Support for SD card encryption (AES-XTS-Plain64 256bit) Recording to network-attached storage (NAS) For SD card and NAS recommendations see axis.com
Memory	1024 MB RAM, 512 MB Flash	Operating conditions	-40 °C to 60 °C (-40 °F to 140 °F) Maximum temperature according to NEMA TS 2 (2.2.7): 74 °C (165 °F) Humidity 10–100% RH (condensing)
Video		Storage conditions	-40 °C to 65 °C (-40 °F to 149 °F) Humidity 5–95% RH (non-condensing)
Video compression	H.264 (MPEG-4 Part 10/AVC) Baseline, Main and High Profiles Motion JPEG	Approvals	EMC EN 55032 Class A, EN 50121-4, IEC 62236-4, EN 55024, EN 61000-6-1, EN 61000-6-2, FCC Part 15 Subpart B Class A,
Resolution	1920x1080 HDTV 1080p to 160x120 Maximum pixel density with 8x optical zoom: 25 m (82 ft): 1912 px/m 50 m (164 ft): 956 px/m 250 m (820 ft): 191 px/m		
Frame rate	With WDR: Up to 25/30 fps (50/60 Hz) in all resolutions Without WDR: Up to 50/60 fps (50/60 Hz) in all resolutions		
Video streaming	Multiple, individually configurable streams in H.264 and Motion JPEG Axis Zipstream technology in H.264 Controllable frame rate and bandwidth VBR/ABR/MBR H.264		
Image settings	Saturation, contrast, brightness, sharpness, Forensic WDR: Up to 120 dB depending on scene, defogging, white balance, day/night threshold, exposure mode, exposure zones, compression, mirroring of images, electronic image stabilization, barrel distortion correction, text and image overlay, dynamic text and image overlay, privacy masks Rotation: auto, 0°, 180° Scene profiles: license plate, forensic, vivid, traffic overview		
Pan/Tilt/Zoom	8x optical zoom, preset positions		
Audio			
Audio streaming	Audio in, simplex		
Audio encoding	AAC-LC 8/16/32/48 kHz, G.711 PCM 8 kHz, G.726 ADPCM 8 kHz, Opus 8/16/48 kHz, LPCM Configurable bit rate		
Audio input/output	Automatic gain control External microphone input, line input, digital input with ring power, balanced microphone, balanced input		
Network			

ICES-003 Class A, VCCI Class A, RCM AS/NZS CISPR 32 Class A, KCC KN32 Class A, KN35, EAC

Safety

IEC/EN/UL 62368-1, IEC/EN/UL 60950-22, EN/IEC 62471, IS 13252

Environment

EN 50581, IEC 60068-2-1, IEC 60068-2-2, IEC 60068-2-6, IEC 60068-2-14, IEC 60068-2-27, IEC 60068-2-78, IEC/EN 60529 IP66, IEC/EN 62262 IK10 body, IK08 glass, NEMA 250 Type 4X, NEMA TS 2 (2.2.7-2.2.9)

Network

NIST SP500-267

Dimensions	Length: 439 mm (17.3 in) ø 147 mm (5.8 in)
Weight	2.4 kg (5.3 lb)
Included accessories	Installation Guide, Windows® decoder 1-user license, connector kit, Resistorx® L-key RJ45 patch cable
Optional accessories	AXIS T90D20 IR-LED Illuminator - for night time capture range at up to 100 m (328 ft)

AXIS T8604 Media Converter Switch
AXIS T91A47 Pole Mount, AXIS T94P01B Corner Bracket
For more accessories, see axis.com

Video management software	AXIS Companion, AXIS Camera Station, video management software from Axis' Application Development Partners available at axis.com/vms
Languages	English, German, French, Spanish, Italian, Russian, Simplified Chinese, Japanese, Korean, Portuguese, Traditional Chinese
Warranty	5-year warranty, see axis.com/warranty

- a. *This product includes software developed by the OpenSSL Project for use in the OpenSSL Toolkit. (openssl.org), and cryptographic software written by Eric Young (eay@cryptsoft.com).*

Environmental responsibility:

axis.com/environmental-responsibility

For more information please contact:



BOCK OPTONICS INC.

14 Steinway Blvd., Unit 7
Toronto, Ontario M9W 6M6

Tel: (416) 674-2804
sales@bockoptronics.ca
www.bockoptronics.ca

AXIS P1448-LE Network Camera

Fully-featured, all-around 4K surveillance

AXIS P1448-LE Network Camera is a cost-effective, all-around camera providing excellent image quality at full frame rate in 8 megapixel resolution and in 16:9 format. Fully-featured with Lightfinder, OptimizedIR and Forensic WDR, forensic details are captured even in challenging light conditions including low light and strong backlight. Outdoor-ready with a wide temperature range, this sturdy and impact resistant camera has shock detection and is ready for extreme temperatures. AXIS P1448-LE offers easy installation with remote zoom and focus for fine tuning of the picture. With Axis Zipstream, I/O and audio support, AXIS P1448-LE got you covered.

- > **4K Ultra HD resolution in full frame rate**
- > **Ease of installation**
- > **Forensic WDR, Lightfinder, and OptimizedIR**
- > **I/O and audio support**
- > **Axis Zipstream technology**



AXIS P1448-LE Network Camera

Camera		Event actions	Record video: SD card and network share Upload of images or video clips: FTP, SFTP, HTTP, HTTPS, network share and email Pre- and post-alarm video or image buffering for recording or upload Notification: email, HTTP, HTTPS, TCP and SNMP trap PTZ: PTZ preset, start/stop guard tour Overlay text, external output activation, day/night mode MQTT publish
Image sensor	1/2.5" progressive scan RGB CMOS	Data streaming	Event data
Lens	2.8–9.8 mm, F1.6 Horizontal field of view 109°–37° Vertical field of view 57°–21° Varifocal, Remote focus and zoom, P-Iris control, IR corrected	Built-in installation aids	Pixel counter, remote zoom (3.5x optical), remote focus, auto rotation
Day and night	Automatically removable infrared-cut filter	Analytics	
Minimum illumination	Color: 0.18 lux, at 50 IRE F1.6 B/W: 0.04 lux, at 50 IRE F1.6 0 lux with IR illumination on	Applications	Included AXIS Motion Guard, AXIS Fence Guard, AXIS Loitering Guard AXIS Video Motion Detection Supported AXIS Digital Autotracking, AXIS Perimeter Defender, AXIS Cross Line Detection Support for AXIS Camera Application Platform enabling installation of third-party applications, see axis.com/acap
Shutter speed	1/62500 s to 2 s	General	
System on chip (SoC)		Casing	IP66/IP67-, NEMA 4X-, and IK10-rated casing Polycarbonate blend and aluminium Color: white NCS S 1002-B
Model	ARTPEC-6	Sustainability	PVC free
Memory	1024 MB RAM, 512 MB Flash	Power	Power over Ethernet IEEE 802.3af/802.3at Type 1 Class 3 Typical: 7.1 W, max 12.95 W
Video		Connectors	Shielded RJ45 10BASE-T/100BASE-TX PoE 3.5 mm mic/line in I/O: 4-pin terminal block for 1 alarm input and 1 output
Video compression	H.264 (MPEG-4 Part 10/AVC) Baseline, Main and High Profiles Motion JPEG	IR illumination	Optimized IR with power-efficient, long-life 850 nm IR LEDs Range of reach 25 m (82 ft) or more depending on the scene
Resolution	3840x2160 to 160x90	Storage	Support for microSD/microSDHC/microSDXC card Support for SD card encryption (AES-XTS-Plain64 256bit) Recording to network-attached storage (NAS) For SD card and NAS recommendations see axis.com
Frame rate	Up to 25/30 fps (50/60 Hz) in all resolutions	Operating conditions	-40 °C to 60 °C (-40 °F to 140 °F) Maximum temperature according to NEMA TS2 (2.2.7): 74 °C (165 °F) Humidity 10–100% RH (condensing)
Video streaming	Multiple, individually configurable streams in H.264 and Motion JPEG Axis Zipstream technology in H.264 Controllable frame rate and bandwidth VBR/ABR/MBR H.264	Storage conditions	-40 °C to 65 °C (-40 °F to 149 °F) Humidity 5–95% RH (non-condensing)
Multi-view streaming	Up to 8 individually cropped out view areas	Approvals	EMC EN 55032 Class A, EN 50121-4, IEC 62236-4, EN 55024, EN 61000-6-1, EN 61000-6-2, FCC Part 15 Subpart B Class A, ICES-003 Class A, VCCI Class A, RCM AS/NZS CISPR 32 Class A, KCC KN32 Class A, KN35 Safety IEC/EN/UL 62368-1, IEC/EN/UL 60950-22, IS 13252, IEC 62471 Environment IEC 60068-2-1, IEC 60068-2-2, IEC 60068-2-6, IEC 60068-2-14, IEC 60068-2-27, IEC 60068-2-78, IEC/EN 60529 IP66/IP67, IEC/EN 62262 IK10, NEMA 250 Type 4X, NEMA TS 2 (2.2.7–2.2.9) Network NIST SP500-267
Image settings	Saturation, contrast, brightness, sharpness, Forensic WDR: Up to 120 dB depending on scene, white balance, day/night threshold, exposure mode, exposure zones, compression, orientation: auto, 0°, 90°, 180°, 270° including Corridor Format, mirroring of images, dynamic text and image overlay, privacy masks	Weight	With weather shield: 1 kg (2.2 lb)
Pan/Tilt/Zoom	Digital PTZ	Dimensions	Ø132 x 260 mm (Ø5 3/16 x 10 1/4 in)
Audio		Included accessories	Installation guide, Windows® decoder 1-user license, drill hole template, connector kit, mounting bracket AXIS Weather Shield L
Audio streaming	Audio in, simplex	Optional accessories	AXIS T94F01M J-Box/Gang Box Plate, AXIS T91A47 Pole Mount, AXIS T94P01B Corner Bracket, AXIS T94F01P Conduit Back Box, AXIS Weather Shield K, Axis PoE Midspans For more accessories, see axis.com
Audio encoding	24bit LPCM, AAC-LC 8/16/32/48 kHz, G.711 PCM 8 kHz, G.726 ADPCM 8 kHz, Opus 8/16/48 kHz Configurable bit rate		
Audio input/output	External microphone input or line input Automatic gain control		
Network			
Security	Password protection, IP address filtering, HTTPS ^a encryption, IEEE 802.1X (EAP-TLS) ^a network access control, digest authentication, user access log, centralized certificate management, brute force delay protection, signed firmware		
Supported protocols	IPv4, IPv6 USGv6, ICMPv4/ICMPv6, HTTP, HTTPS ^a , HTTP/2, TLS ^a , QoS Layer 3 DiffServ, FTP, SFTP, CIFS/SMB, SMTP, mDNS (Bonjour), UPnP ^b , SNMP v1/v2c/v3 (MIB-II), DNS/DNSv6, DDNS, NTP, RTSP, RTP, SRTP, TCP, UDP, IGMPv1/v2/v3, RTCP, ICMP, DHCPv4/v6, ARP, SOCKS, SSH, LLDP, CDP, MQTT v3.1.1, Syslog, Link-Local address (ZeroConf)		
System integration			
Application Programming Interface	Open API for software integration, including VAPIX [®] and AXIS Camera Application Platform; specifications at axis.com AXIS Video Hosting System (AVHS) with One-Click Connection One-click cloud connection ONVIF [®] Profile G, ONVIF [®] Profile M, ONVIF [®] Profile S and ONVIF [®] Profile T, specification at onvif.org		
Event conditions	Analytics Detectors: live stream accessed, video motion detection, audio detection, day/night mode, shock detection, tampering Hardware: network, temperature Input Signal: digital input port, manual trigger, virtual inputs MQTT subscribe Storage: disruption, recording System: system ready Time: recurrence, use schedule		

Video management software	AXIS Companion, AXIS Camera Station, video management software from Axis' Application Development Partners available at axis.com/vms
Languages	English, German, French, Spanish, Italian, Russian, Simplified Chinese, Japanese, Korean, Portuguese, Traditional Chinese
Warranty	5-year warranty, see axis.com/warranty

a. *This product includes software developed by the OpenSSL Project for use in the OpenSSL Toolkit. (openssl.org), and cryptographic software written by Eric Young (eay@cryptsoft.com).*

Environmental responsibility:
axis.com/environmental-responsibility

For more information please contact:



BOCK OPTRONICS INC.
14 Steinway Blvd., Unit 7
Toronto, Ontario M9W 6M6

Tel: (416) 674-2804
sales@bockoptronics.ca
www.bockoptronics.ca

AXIS P1455-LE Network Camera

Versatile, feature-rich 2 MP surveillance

AXIS P1455-LE offers excellent image quality in HDTV 1080p. Featuring Axis Lightfinder 2.0 and Axis Forensic WDR it delivers true colors and great detail in challenging light or near darkness. AXIS Object Analytics lets you detect and classify humans and vehicles. And, with edge-to-edge technology, it offers smart pairing functionality with Axis Network Speakers. Motion-adaptive exposure significantly reduces the motion blur from approaching or nearby objects, and OptimizedIR enables surveillance in pitch darkness. Furthermore, Axis Edge Vault protects your Axis device ID and simplifies authorization of Axis products on your network. The outdoor-ready camera comes with either a wide or a tele lens.

- > [Lightfinder 2.0 and Forensic WDR](#)
- > [OptimizedIR](#)
- > [AXIS Object Analytics](#)
- > [Enhanced security features](#)
- > [Two lens alternatives](#)



AXIS P1455-LE Network Camera

RTP, SRTP, TCP, UDP, IGMPv1/v2/v3, RTCP, ICMP, DHCPv4/v6, ARP, SOCKS, SSH, LLDP, CDP, MQTT v3.1.1, Syslog, Link-Local address (ZeroConf)

Camera	
Image sensor	1/2.8" progressive scan RGB CMOS
Lens	AXIS P1455-LE 9 mm: Varifocal, 3-9 mm, F1.6-3.3 Horizontal field of view 114°-37° Vertical field of view 58°-21° Varifocal, Remote focus and zoom, P-Iris control, IR corrected AXIS P1455-LE 29 mm: Varifocal, 10.9-29 mm, F1.7-1.7 Horizontal field of view 29°-11° Vertical field of view 17°-6.5° Varifocal, Remote focus and zoom, P-Iris control, IR corrected
Day and night	Automatically removable infrared-cut filter
Minimum illumination	AXIS P1455-LE 9 mm: Color: 0.07 lux, at 50 IRE F1.6 B/W: 0.01 lux, at 50 IRE F1.6 0 lux with IR illumination on AXIS P1455-LE 29 mm: Color: 0.07 lux, at 50 IRE F1.7 B/W: 0.01 lux, at 50 IRE F1.7 0 lux with IR illumination on
Shutter speed	1/66500 s to 2 s
System on chip (SoC)	
Model	ARTPEC-7
Memory	1024 MB RAM, 512 MB Flash
Compute capabilities	Machine learning processing unit (MLPU)
Video	
Video compression	H.264 (MPEG-4 Part 10/AVC) Baseline, Main and High Profiles H.265 (MPEG-H Part 2/HEVC) Main Profile Motion JPEG
Resolution	1920x1080 to 160x90
Frame rate	With Forensic WDR: Up to 25/30 fps (50/60 Hz) in all resolutions No WDR: Up to 50/60 fps (50/60 Hz) in all resolutions
Video streaming	Multiple, individually configurable streams in H.264, H.265 and Motion JPEG Axis Zipstream technology in H.264 and H.265 Controllable frame rate and bandwidth VBR/ABR/MBR H.264/H.265 Video streaming indicator
Multi-view streaming	Up to 8 individually cropped out view areas
Image settings	Saturation, contrast, brightness, sharpness, Forensic WDR: Up to 120 dB depending on scene, white balance, day/night threshold, exposure mode, exposure zones, defogging, compression, orientation: auto, 0°, 90°, 180°, 270° including Corridor Format, mirroring of images, dynamic text and image overlay, privacy masks, motion-adaptive exposure AXIS P1455-LE 9 mm: Barrel distortion correction AXIS P1455-LE 29 mm: Electronic image stabilization Scene profiles: forensic, vivid, traffic overview
Pan/Tilt/Zoom	Digital PTZ, digital zoom
Audio	
Audio streaming	Audio in, simplex, two-way audio via edge-to-edge technology
Audio encoding	24bit LPCM, AAC-LC 8/16/32/48 kHz, G.711 PCM 8 kHz, G.726 ADPCM 8 kHz, Opus 8/16/48 kHz Configurable bit rate
Audio input/output	External microphone input or line input, digital audio input, network speaker pairing
Network	
Security	Password protection, IP address filtering, HTTPS ^a encryption, IEEE 802.1X (EAP-TLS) ^a network access control, digest authentication, user access log, centralized certificate management, brute force delay protection, signed firmware, secure boot, Axis Edge Vault with Axis device ID
Supported protocols	IPv4, IPv6 USGv6, ICMPv4/ICMPv6, HTTP, HTTPS ^a , HTTP/2, TLS ^a , QoS Layer 3 DiffServ, FTP, SFTP, CIFS/SMB, SMTP, mDNS (Bonjour), UPnP [®] , SNMP v1/v2c/v3 (MIB-II), DNS/DNSv6, DDNS, NTP, RTSP,

System integration	
Application Programming Interface	Open API for software integration, including VAPIX [®] and AXIS Camera Application Platform; specifications at axis.com One-Click Cloud Connection ONVIF [®] Profile G, ONVIF [®] Profile M, ONVIF [®] Profile S and ONVIF [®] Profile T, specification at onvif.org
Onscreen controls	Day/night shift Defogging Wide dynamic range IR illumination AXIS P1455-LE 29 mm: Electronic image stabilization
Event conditions	Analytics Detectors: live stream accessed, video motion detection, audio detection, day/night mode, shock detection, tampering Hardware: network, temperature Input Signal: digital input port, manual trigger, virtual inputs Storage: disruption, recording System: system ready Time: recurrence, use schedule AXIS P1455-LE 29 mm: Supervised input changed state MQTT subscribe
Event actions	Record video: SD card and network share Upload of images or video clips: FTP, SFTP, HTTP, HTTPS, network share and email Pre- and post-alarm video or image buffering for recording or upload Notification: email, HTTP, HTTPS, TCP and SNMP trap PTZ: PTZ preset, start/stop guard tour Overlay text, external output activation, day/night mode MQTT publish
Data streaming	Event data
Built-in installation aids	Pixel counter, remote zoom (3x optical), remote focus, auto rotation
Analytics	
AXIS Object Analytics	Object classes: humans, vehicles Trigger conditions: line crossing, object in area Up to 10 scenarios Metadata visualized with color-coded bounding boxes Polygon include/exclude areas Perspective configuration ONVIF Motion Alarm event
Applications	Included AXIS Object Analytics AXIS Video Motion Detection, active tampering, shock detection Supported AXIS Perimeter Defender Support for AXIS Camera Application Platform enabling installation of third-party applications, see axis.com/acap
General	
Casing	IP66/IP67-, NEMA 4X-, and IK10-rated casing Polycarbonate blend and aluminium Color: white NCS S 1002-B
Sustainability	AXIS P1455-LE 9 mm: PVC free AXIS P1455-LE 29 mm: PVC free, BFR/CFR free
Power	AXIS P1455-LE 9 mm: Power over Ethernet IEEE 802.3af/802.3at Type 1 Class 3 Typical: 7.7 W, max 12.95 W AXIS P1455-LE 29 mm: Power over Ethernet IEEE 802.3af/802.3at Type 1 Class 3 Typical: 8.5 W, max 12.95 W 12-28 V DC, typical 7.8 W, max 12.95 W
Connectors	AXIS P1455-LE 9 mm: Shielded RJ45 10BASE-T/100BASE-TX/1000BASE-T 3.5 mm mic/line in Terminal block for 1 alarm input and 1 output (12 V DC output, max. load 25 mA) AXIS P1455-LE 29 mm:

	Shielded RJ45 10BASE-T/100BASE-TX/1000BASE-T 3.5 mm mic/line in Terminal block for 1 supervised alarm input and 1 output (12 V DC output, max. load 25 mA) DC input
IR illumination	OptimizedIR with power-efficient, long-life 850 nm IR LEDs AXIS P1455-LE 9 mm: Range of reach 40 m (131 ft) or more depending on the scene AXIS P1455-LE 29 mm: Range of reach 80 m (262 ft) or more depending on the scene
Storage	Support for microSD/microSDHC/microSDXC card Support for SD card encryption (AES-XTS-Plain64 256bit) Recording to network-attached storage (NAS) For SD card and NAS recommendations see axis.com
Operating conditions	-40 °C to 60 °C (-40 °F to 140 °F) Maximum temperature according to NEMA TS2 (2.2.7): 74 °C (165 °F) Humidity 10–100% RH (condensing)
Storage conditions	-40 °C to 65 °C (-40 °F to 149 °F) Humidity 5–95% RH (non-condensing)
Approvals	EMC EN 55032 Class A, EN 50121-4, IEC 62236-4, EN 55035, EN 61000-3-3, EN 61000-6-1, EN 61000-6-2, FCC Part 15 Subpart B Class A, ICES-3(A)/NMB-3(A), VCCI Class A, RCM AS/NZS CISPR 32 Class A Safety IEC/EN/UL 62368-1, IEC/EN/UL 60950-22, IS 13252, IEC 62471 Environment IEC 60068-2-1, IEC 60068-2-2, IEC 60068-2-6, IEC 60068-2-14, IEC 60068-2-27, IEC 60068-2-78, IEC/EN 60529 IP66/IP67, IEC/EN 62262 IK10, NEMA 250 Type 4X, NEMA TS 2 (2.2.7-2.2.9)

	Network NIST SP500-267
Weight	With weather shield: AXIS P1455-LE 9 mm: 1 kg (2.2 lb) AXIS P1455-LE 29 mm: 1.2 kg (2.65 lb)
Dimensions	AXIS P1455-LE 9 mm: Ø132 x 260 mm (Ø5.2 x 10.2 in) AXIS P1455-LE 29 mm: Ø132 x 264 mm (Ø5.2 x 10.4 in)
Included accessories	Installation guide, Windows® decoder 1-user license, drill hole template, connector kit, mounting bracket, Torx® L-keys AXIS Weather Shield L
Optional accessories	AXIS T94F01M J-Box/Gang Box Plate, AXIS T91A47 Pole Mount, AXIS T94P01B Corner Bracket, AXIS T94F01P Conduit Back Box, AXIS Weather Shield K, Axis PoE Midspans For more accessories, see axis.com
Video management software	AXIS Companion, AXIS Camera Station, video management software from Axis' Application Development Partners available at axis.com/vms
Languages	English, German, French, Spanish, Italian, Russian, Simplified Chinese, Japanese, Korean, Portuguese, Traditional Chinese
Warranty	5-year warranty, see axis.com/warranty

- a. This product includes software developed by the OpenSSL Project for use in the OpenSSL Toolkit. (openssl.org), and cryptographic software written by Eric Young (eyay@cryptsoft.com).

Environmental responsibility:

axis.com/environmental-responsibility

For more information please contact:



BOCK OPTRONICS INC.
14 Steinway Blvd., Unit 7
Toronto, Ontario M9W 6M6

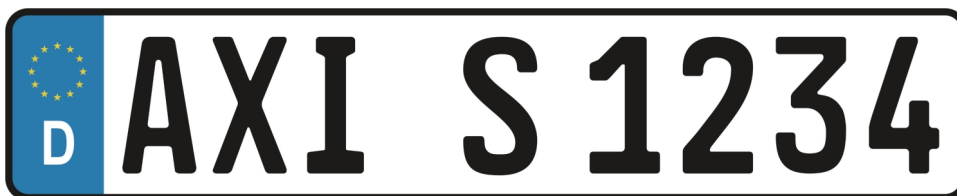
Tel: (416) 674-2804
sales@bockoptronics.ca
www.bockoptronics.ca

AXIS P1455-LE-3 License Plate Verifier Kit

Easy, cost-effective kit for slow traffic

AXIS P1455-LE-3 includes an HDTV 1080p fixed bullet camera and comes with AXIS License Plate Verifier preinstalled. Featuring freeflow mode, it's ideal for use in slow-speed traffic, such as in city centers, gated communities, and campuses. The compact and robust IK10-rated camera includes shock detection for installation in all environments. Featuring a 29 mm telephoto lens, this cost-effective solution can read license plates from 7 to 20 meters (20-65 feet). It includes Axis image enhancement technologies as well as Optimized IR – to ensure sharp images for license plate reading 24/7. Furthermore, it offers tight integration with AXIS Camera Station.

- > [Ideal for slow-speed traffic](#)
- > [Read license plates from 7-20 m \(20-65 ft\)](#)
- > [Proven for tough weather conditions](#)
- > [OptimizedIR for recognition in darkness](#)
- > [Integration with AXIS Camera Station](#)



AXIS License Plate Verifier

Application

Compute platform	Edge
Licenses	AXIS License Plate Verifier license included.
Configuration	Web configuration included
Settings	Define area of interest in scene. Allow- and blocklist logic. Barrier mode: Open to all, open to allowlisted, open to all but blocklisted. Minimum width: 130 pixels for one-row license plates; 70 pixels for two-row license plates. FIFO event log entries including thumbnail image of license plate. Up to 1000 entries on camera storage. Up to 100 000 entries on AXIS Surveillance Cards. Configurable retention time of stored events
Detection range	7.0 to 20 m (20 to 65 ft)
Vehicle speed	Up to 70 km/h (45 mph)
Detection time	Less than 1 second.

Scenarios

Typical applications	License plate recognition in slow speed traffic In Freeflow, the application can detect and read license plates in slow speed traffic on larger access roads, city centers and enclosed areas like campuses, ports or airports. This allows for LPR-forensic search and LPR triggered events in a VMS such as ACS. Vehicle access control In Access control, the application monitors entrances and exits of gated areas such as parking areas. The application verifies detected license plates against an allowlist or a blocklist for granting or denying access to an area. Maximum 10,000 license plates in each list. For a scenario where greater functionality and flexibility are required, use AXIS A1001 Network Door Controller. AXIS A1001 with AXIS Entry Manager software supports access rules including schedules and a more detailed event log. Multiple partner software that support a great number of credentials and features are available.
----------------------	---

System integration

Application Programming Interface	Open API for software integration.
Event streaming	Integrates with camera event management system to enable event streaming to management software and camera actions such as I/O control, notification, and edge storage.
Supported devices	Direct integration with AXIS A1001 Network Door Controller and AXIS A91 Network I/O Relay Modules.

General

Supported countries	For a complete list of supported countries, go to the product page at axis.com
Languages	English

AXIS P1455-LE-3 License Plate Verifier Kit

Camera		Video streaming indicator
Image sensor	1/2.8" progressive scan RGB CMOS	Event conditions
Lens	Varifocal, 10.9-29 mm, F1.7-1.7 Horizontal field of view 29°-11° Vertical field of view 17°-6.5° Varifocal, Remote focus and zoom, P-Iris control, IR corrected	Analytics Detectors: live stream accessed, video motion detection, audio detection, day/night mode, shock detection, tampering Hardware: network, temperature Input Signal: digital input port, manual trigger, virtual inputs Storage: disruption, recording System: system ready Time: recurrence, use schedule Supervised input changed state MQTT subscribe
Day and night	Automatically removable infrared-cut filter	Event actions
Minimum illumination	Color: 0.07 lux, at 50 IRE F1.7 B/W: 0.01 lux, at 50 IRE F1.7 0 lux with IR illumination on	Record video: SD card and network share Upload of images or video clips: FTP, SFTP, HTTP, HTTPS, network share and email Pre- and post-alarm video or image buffering for recording or upload Notification: email, HTTP, HTTPS, TCP and SNMP trap PTZ: PTZ preset, start/stop guard tour Overlay text, external output activation, day/night mode MQTT publish
Shutter speed	1/66500 s to 2 s	Data streaming
System on chip (SoC)		Event data
Model	ARTPEC-7	Built-in installation aids
Memory	1024 MB RAM, 512 MB Flash	Pixel counter, remote zoom (3x optical), remote focus, auto rotation
Video		Analytics
Video compression	H.264 (MPEG-4 Part 10/AVC) Baseline, Main and High Profiles H.265 (MPEG-H Part 2/HEVC) Main Profile Motion JPEG	Compute capabilities
Resolution	1920x1080 to 160x90	Machine learning processing unit (MLPU)
Frame rate	With Forensic WDR: Up to 25/30 fps (50/60 Hz) in all resolutions No WDR: Up to 50/60 fps (50/60 Hz) in all resolutions	Applications
Video streaming	Multiple, individually configurable streams in H.264, H.265 and Motion JPEG Axis Zipstream technology in H.264 and H.265 Controllable frame rate and bandwidth VBR/ABR/MBR H.264/H.265 Video streaming indicator	Included AXIS License Plate Verifier AXIS Video Motion Detection, active tampering, shock detection Support for AXIS Camera Application Platform enabling installation of third-party applications, see axis.com/acap
Multi-view streaming	Up to 8 individually cropped out view areas	General
Image settings	Saturation, contrast, brightness, sharpness, Forensic WDR: Up to 120 dB depending on scene, white balance, day/night threshold, exposure mode, exposure zones, defogging, compression, orientation: auto, 0°, 90°, 180°, 270° including Corridor Format, mirroring of images, dynamic text and image overlay, privacy masks, motion-adaptive exposure, electronic image stabilization	Casing
Pan/Tilt/Zoom	Digital PTZ, digital zoom	IP66/IP67-, NEMA 4X-, and IK10-rated casing Polycarbonate blend and aluminium Color: white NCS S 1002-B
Audio		Sustainability
Audio streaming	Audio in, simplex, two-way audio via edge-to-edge technology	PVC free, BFR/CFR free
Audio encoding	24bit LPCM, AAC-LC 8/16/32/48 kHz, G.711 PCM 8 kHz, G.726 ADPCM 8 kHz, Opus 8/16/48 kHz Configurable bit rate	Power
Audio input/output	External microphone input or line input, digital audio input, network speaker pairing	Power over Ethernet IEEE 802.3af/802.3at Type 1 Class 3 Typical: 8.5 W, max 12.95 W 12-28 V DC, typical 7.8 W, max 12.95 W
Network		Connectors
Security	Password protection, IP address filtering, HTTPS ^a encryption, IEEE 802.1X (EAP-TLS) ^a network access control, digest authentication, user access log, centralized certificate management, brute force delay protection, signed firmware, secure boot, Axis Edge Vault with Axis device ID	Shielded RJ45 10BASE-T/100BASE-TX/1000BASE-T 3.5 mm mic/line in Terminal block for 1 supervised alarm input and 1 output (12 V DC output, max. load 25 mA) DC input
Supported protocols	IPv4, IPv6 USGv6, ICMPv4/ICMPv6, HTTP, HTTPS ^a , HTTP/2, TLS ^a , QoS Layer 3 DiffServ, FTP, SFTP, CIFS/SMB, SMTP, mDNS (Bonjour), UPnP [®] , SNMP v1/v2c/v3 (MIB-II), DNS/DNSv6, DDNS, NTP, RTP, RTSP, TCP, UDP, IGMPv1/v2/v3, RTCP, ICMP, DHCPv4/v6, ARP, SOCKS, SSH, LLDP, CDP, MQTT v3.1.1, Syslog, Link-Local address (ZeroConf)	IR illumination
System integration		Optimized IR with power-efficient, long-life 850 nm IR LEDs Range of reach 45 m (150 ft) or more depending on the scene
Application Programming Interface	Open API for software integration, including VAPIX [®] and AXIS Camera Application Platform; specifications at axis.com One-Click Cloud Connection ONVIF [®] Profile G, ONVIF [®] Profile M, ONVIF [®] Profile S and ONVIF [®] Profile T, specification at onvif.org	Storage
Onscreen controls	Day/night shift Defogging Wide dynamic range IR illumination Electronic image stabilization	Support for microSD/microSDHC/microSDXC card Support for SD card encryption (AES-XTS-Plain64 256bit) Recording to network-attached storage (NAS) For SD card and NAS recommendations see axis.com
		Operating conditions
		-40 °C to 60 °C (-40 °F to 140 °F) Maximum temperature according to NEMA TS2 (2.2.7): 74 °C (165 °F) Humidity 10-100% RH (condensing)
		Storage conditions
		-40 °C to 65 °C (-40 °F to 149 °F) Humidity 5-95% RH (non-condensing)
		Approvals
		EMC EN 55032 Class A, EN 50121-4, IEC 62236-4, EN 55035, EN 61000-3-3, EN 61000-6-1, EN 61000-6-2, FCC Part 15 Subpart B Class A, ICES-3(A)/NMB-3(A), VCCI Class A, RCM AS/NZS CISPR 32 Class A Safety IEC/EN/UL 62368-1, IEC/EN/UL 60950-22, IS 13252, IEC 62471 Environment IEC 60068-2-1, IEC 60068-2-2, IEC 60068-2-6, IEC 60068-2-14, IEC 60068-2-27, IEC 60068-2-78, IEC/EN 60529 IP66/IP67, IEC/EN 62262 IK10, NEMA 250 Type 4X, NEMA TS 2 (2.2.7-2.2.9) Network NIST SP500-267

Weight	With weather shield: 1.2 kg (2.65 lb)
Dimensions	Ø132 x 264 mm (Ø5.2 x 10.4 in)
Included accessories	Installation guide, Windows® decoder 1-user license, drill hole template, connector kit, mounting bracket, Torx® L-keys AXIS Weather Shield L
Optional accessories	AXIS T94F01M J-Box/Gang Box Plate, AXIS T91A47 Pole Mount, AXIS T94P01B Corner Bracket, AXIS T94F01P Conduit Back Box, AXIS Weather Shield K, Axis PoE Midspans For more accessories, see axis.com
Video management software	AXIS Companion, AXIS Camera Station, video management software from Axis' Application Development Partners available at axis.com/vms

Languages English, German, French, Spanish, Italian, Russian, Simplified Chinese, Japanese, Korean, Portuguese, Traditional Chinese

Warranty 5-year warranty, see axis.com/warranty

- a. *This product includes software developed by the OpenSSL Project for use in the OpenSSL Toolkit. (openssl.org), and cryptographic software written by Eric Young (eay@cryptsoft.com).*

Environmental responsibility:

axis.com/environmental-responsibility

For more information please contact:



BOCK OPTRONICS INC.

14 Steinway Blvd., Unit 7
Toronto, Ontario M9W 6M6

Tel: (416) 674-2804
sales@bockoptronics.ca
www.bockoptronics.ca

AXIS P1447-LE Network Camera

Fully-featured, all-around 5 MP surveillance

AXIS P1447-LE Network Camera is a cost-effective, all-around camera providing excellent image quality at full frame rate in 5 megapixel resolution and in 16:9 format. Fully-featured with Lightfinder, OptimizedIR and Forensic WDR, forensic details are captured even in challenging light conditions including low light and strong backlight. Outdoor-ready with a wide temperature range, this sturdy and impact resistant camera has shock detection and is ready for extreme temperatures. AXIS P1447-LE offers easy installation with remote zoom and focus for fine tuning of the picture. With Axis Zipstream, I/O and audio support, AXIS P1447-LE got you covered.

- > [5 megapixel resolution in full frame rate](#)
- > [Ease of installation](#)
- > [Forensic WDR, Lightfinder, and OptimizedIR](#)
- > [I/O and audio support](#)
- > [Axis Zipstream technology](#)



AXIS P1447-LE Network Camera

Camera		Event actions	Record video: SD card and network share Upload of images or video clips: FTP, SFTP, HTTP, HTTPS, network share and email Pre- and post-alarm video or image buffering for recording or upload Notification: email, HTTP, HTTPS, TCP and SNMP trap PTZ: PTZ preset, start/stop guard tour Overlay text, external output activation, day/night mode MQTT publish
Image sensor	1/2.9" progressive scan RGB CMOS	Data streaming	Event data
Lens	2.8–8.5 mm, F1.2 Horizontal field of view 104°–36° Vertical field of view 55°–20° Varifocal, Remote focus and zoom, P-Iris control, IR corrected	Built-in installation aids	Pixel counter, remote zoom (3x optical), remote focus, auto rotation
Day and night	Automatically removable infrared-cut filter	Analytics	
Minimum illumination	Color: 0.15 lux, at 50 IRE F1.2 B/W: 0.03 lux, at 50 IRE F1.2 0 lux with IR illumination on	Applications	Included AXIS Motion Guard, AXIS Fence Guard, AXIS Loitering Guard AXIS Video Motion Detection Supported AXIS Digital Autotracking, AXIS Perimeter Defender, AXIS Cross Line Detection Support for AXIS Camera Application Platform enabling installation of third-party applications, see axis.com/acap
Shutter speed	1/62500 s to 2 s	General	
System on chip (SoC)		Casing	IP66/IP67-, NEMA 4X-, and IK10-rated casing Polycarbonate blend and aluminium Color: white NCS S 1002-B
Model	ARTPEC-6	Sustainability	PVC free
Memory	1024 MB RAM, 512 MB Flash	Power	Power over Ethernet IEEE 802.3af/802.3at Type 1 Class 3 Typical: 6.7 W, max 12.95 W
Video		Connectors	Shielded RJ45 10BASE-T/100BASE-TX PoE 3.5 mm mic/line in I/O: 4-pin terminal block for 1 alarm input and 1 output
Video compression	H.264 (MPEG-4 Part 10/AVC) Baseline, Main and High Profiles Motion JPEG	IR illumination	Optimized IR with power-efficient, long-life 850 nm IR LEDs Range of reach 30 m (98 FT) or more depending on the scene
Resolution	3072x1728 to 160x90	Storage	Support for microSD/microSDHC/microSDXC card Support for SD card encryption (AES-XTS-Plain64 256bit) Recording to network-attached storage (NAS) For SD card and NAS recommendations see axis.com
Frame rate	Up to 25/30 fps (50/60 Hz) in all resolutions	Operating conditions	-40 °C to 60 °C (-40 °F to 140 °F) Maximum temperature according to NEMA TS2 (2.2.7): 74 °C (165 °F) Humidity 10–100% RH (condensing)
Video streaming	Multiple, individually configurable streams in H.264 and Motion JPEG Axis Zipstream technology in H.264 Controllable frame rate and bandwidth VBR/ABR/MBR H.264	Storage conditions	-40 °C to 65 °C (-40 °F to 149 °F) Humidity 5–95% RH (non-condensing)
Multi-view streaming	Up to 8 individually cropped out view areas	Approvals	EMC EN 55032 Class A, EN 50121-4, IEC 62236-4, EN 55024, EN 61000-6-1, EN 61000-6-2, FCC Part 15 Subpart B Class A, ICES-003 Class A, VCCI Class A, RCM AS/NZS CISPR 32 Class A, KCC KN32 Class A, KN35 Safety IEC/EN/UL 62368-1, IEC/EN/UL 60950-22, IS 13252, IEC 62471 Environment IEC 60068-2-1, IEC 60068-2-2, IEC 60068-2-6, IEC 60068-2-14, IEC 60068-2-27, IEC 60068-2-78, IEC/EN 60529 IP66/IP67, IEC/EN 62262 IK10, NEMA 250 Type 4X, NEMA TS 2 (2.2.7–2.2.9) Network NIST SP500-267
Image settings	Saturation, contrast, brightness, sharpness, Forensic WDR: Up to 120 dB depending on scene, white balance, day/night threshold, exposure mode, exposure zones, compression, orientation: auto, 0°, 90°, 180°, 270° including Corridor Format, mirroring of images, dynamic text and image overlay, privacy masks	Weight	With weather shield: 1 kg (2.2 lb)
Pan/Tilt/Zoom	Digital PTZ	Dimensions	Ø132 x 260 mm (Ø5 3/16 x 10 1/4 in)
Audio		Included accessories	Installation guide, Windows® decoder 1-user license, drill hole template, connector kit, mounting bracket AXIS Weather Shield L
Audio streaming	Audio in, simplex	Optional accessories	AXIS T94F01M J-Box/Gang Box Plate, AXIS T91A47 Pole Mount, AXIS T94P01B Corner Bracket, AXIS T94F01P Conduit Back Box, AXIS Weather Shield K, Axis PoE Midspans For more accessories, see axis.com
Audio encoding	24bit LPCM, AAC-LC 8/16/32/48 kHz, G.711 PCM 8 kHz, G.726 ADPCM 8 kHz, Opus 8/16/48 kHz Configurable bit rate		
Audio input/output	External microphone input or line input		
Network			
Security	Password protection, IP address filtering, HTTPS ^a encryption, IEEE 802.1X (EAP-TLS) ^a network access control, digest authentication, user access log, centralized certificate management, brute force delay protection, signed firmware		
Supported protocols	IPv4, IPv6 USGv6, ICMPv4/ICMPv6, HTTP, HTTPS ^a , HTTP/2, TLS ^a , QoS Layer 3 DiffServ, FTP, SFTP, CIFS/SMB, SMTP, mDNS (Bonjour), UPnP [®] , SNMP v1/v2c/v3 (MIB-II), DNS/DNSv6, DDNS, NTP, RTSP, RTP, SRTP, TCP, UDP, IGMPv1/v2/v3, RTCP, ICMP, DHCPv4/v6, ARP, SOCKS, SSH, LLDP, CDP, MQTT v3.1.1, Syslog, Link-Local address (ZeroConf)		
System integration			
Application Programming Interface	Open API for software integration, including VAPIX [®] and AXIS Camera Application Platform; specifications at axis.com AXIS Video Hosting System (AVHS) with One-Click Connection One-click cloud connection ONVIF [®] Profile G, ONVIF [®] Profile M, ONVIF [®] Profile S and ONVIF [®] Profile T, specification at onvif.org		
Event conditions	Analytics Detectors: live stream accessed, video motion detection, audio detection, day/night mode, shock detection, tampering Hardware: network, temperature Input Signal: digital input port, manual trigger, virtual inputs MQTT subscribe Storage: disruption, recording System: system ready Time: recurrence, use schedule		

Video management software	AXIS Companion, AXIS Camera Station, video management software from Axis' Application Development Partners available at axis.com/vms	a. <i>This product includes software developed by the OpenSSL Project for use in the OpenSSL Toolkit. (openssl.org), and cryptographic software written by Eric Young (eay@cryptsoft.com).</i>
Languages	English, German, French, Spanish, Italian, Russian, Simplified Chinese, Japanese, Korean, Portuguese, Traditional Chinese	Environmental responsibility: axis.com/environmental-responsibility
Warranty	5-year warranty, see axis.com/warranty	

For more information please contact:



BOCK OPTRONICS INC.

14 Steinway Blvd., Unit 7
Toronto, Ontario M9W 6M6

Tel: (416) 674-2804
sales@bockoptronics.ca
www.bockoptronics.ca