

## 1W OEM 802.11b/g/n Serial/Ethernet WIFI Router w/LTE

The pXLTE-4GL combines our powerful px2 WiFi router/gateway and a robust LTE Connection into a single compact OEM package. The LTE Connection provides a wide selection of globally supported LTE bands, features 3G/HSPA Fallback and can deliver up to 150 Mbps of download speeds. The embedded px2 provides high power (1W), wide range, fast 802.11n WiFi access for remote devices to connect. The pXLTE features Dual Ethernet Ports, Dual RS232, USB and GPS capabilities.

**802.11 b/g/n (1W) WiFi**

**150 Mbps LTE w/Fallback**

**Compact Size**

**Ethernet | Serial | USB**

**Industrial Temperature**

**AP | Client | Repeater Modes**



**Only 30 grams!**

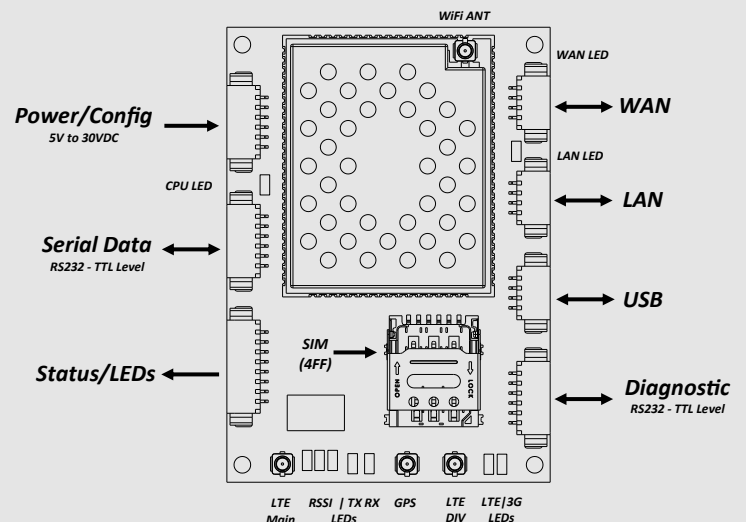
**1.6" X 2.25" X 0.35"**



**Optional Motherboard for Easy Testing & Evaluation!**

### pXLTE Features

- High Power WiFi (up to 1W) w/ Excellent Rx Sensitivity
- 802.11b/g/n WiFi , up to 150 Mbps data rate
- 150 Mbps (DL) 4G/LTE Operation w/Global Band Support
- Firewall with ACL Security, Port Forwarding
- Full Scale Access Point, Client & Repeater Modes
- Dual Serial /Console Ports (RS232)
- Dual 10/100 Ethernet Ports (LAN/WAN)
- Industrial grade operating temperature (-40°C to +85°C)
- Standalone GPS
- Administration via console, telnet, web browser
- Local and remote wireless firmware upgradable



# pXLTE Series

# Specifications

WiFi Specifications		Performance Specifications (WiFi)			
Frequency	2.4000 - 2.4835 GHz	<b>Rate</b>	<b>Mode</b>	<b>Tx Power</b>	<b>Receive</b>
Radio Operation	IEEE 802.11 b/g/n	1 Mbps	802.11b	30 dBm	-97 dBm ±1 dB
Output Power	Up to 30dBm (1W)	2 Mbps	802.11b	30 dBm	-96 dBm ±1 dB
Link Rate	Up to 150 Mbps	5.5 Mbps	802.11b	30 dBm	-95 dBm ±1 dB
Error Detection/Control	FEC/ARQ	11 Mbps	802.11b	30 dBm	-92 dBm ±1 dB
Operating Modes	Full Scale Access Point, Client, Repeater	6 Mbps	802.11g	30 dBm	-94 dBm ±1 dB
Encryption	WEP,WPA(PSK), WPA2(PSK), WPA+WPA2(PSK), WPA Enterprise (RADIUS), WPA2 Enterprise, WPA + WPA2 Enterprise	9 Mbps	802.11g	30 dBm	-93 dBm ±1 dB
Range	> 10 miles (16 km) (Antenna Dependent)	12 Mbps	802.11g	30 dBm	-91 dBm ±1 dB
<b>Cellular Specifications</b>		18 Mbps	802.11g	30 dBm	-90 dBm ±1 dB
Cellular Supported Bands	LTE FDD: B1,B2,B3,B4,B5,B7,B8,B12,B13, B18,B19,B20,B26,B28 TDD: B38,B39,B40,B41 WCDMA: B1,B2,B4,B5,B8,B6,B19 GSM: B2/B3/B5/B8	24 Mbps	802.11g	28 dBm	-86 dBm ±1 dB
Cellular Data Features*	LTE FDD: Up to 150 Mbps DL, 50 Mbps UL LTE TDD: Up to 130 Mbps DL, 35 Mbps UL DC-HSPA+: Up to 42 Mbps DL, 5.7 Mbps UL WCDMA: Up to 384 Kbps DL, 384 Kbps UL EDGE: Up to 296 Kbps DL, 236.8 Kbps UL GSM: Up to 107 Kbps DL, 85.6 Kbps UL	36 Mbps	802.11g	28 dBm	-83 dBm ±1 dB
*Module Standalone Lab Performance		48 Mbps	802.11g	26 dBm	-77 dBm ±1 dB
<b>General Specifications</b>		54 Mbps	802.11g	26 dBm	-75 dBm ±1 dB
Ports	RS232 (Tx, RX, RTS, CTS, DTR, DSR) 300bps to 921kbps Dual 10/100BaseT IEEE802.3 2.0	MCS0	802.11n (HT20)	30 dBm	-96 dBm ±1 dB
Management	Local Serial Port Console, Telnet, WebUI, SNMP, FTP Upgrade, TFTP, CLI (Command Line Interface)	MCS1	802.11n (HT20)	30 dBm	-95 dBm ±1 dB
Network Advanced Protocols	TCP, UDP, TCP/IP, ARP, ICMP, DHCP, HTTP, SNMP, FTP, Serial over IP  IP Routing - static Routing, IP/RIPv1, IP/RIPv2, CIDR, ICMP, ARP NAT and Port Forwarding (Routing mode only).  Full 802.1Q VLAN Support, Access Control Lists (MAC & IP), MAC/IP Binding, Multiple SSID Support	MCS2	802.11n (HT20)	30 dBm	-92 dBm ±1 dB
Diagnostics	Remote Diagnostics, Monitor Utilities (Ping, ARP table, DHCP active leases, CCQ), Link Test	MCS3	802.11n (HT20)	28 dBm	-90 dBm ±1 dB
Input Voltage	7-30 VDC	MCS4	802.11n (HT20)	28 dBm	-86 dBm ±1 dB
Connectors	WiFi Antenna: UFL LTE Antenna: UFL x3 (Main, Div, GPS) Power: 6-Pin Quick Connect Serial/Console: 2x 6-Pin Quick Connect Status/LEDs: 8-Pin Quick Connect WAN/LAN: 2x 4-Pin Quick Connect USB: 4-Pin Quick Connect SIM Slot: Nano(4FF)	MCS5	802.11n (HT20)	26 dBm	-83 dBm ±1 dB
Environmental	Temperature: -40°F to 185°F (-40°C to +85°C) Humidity: 5-95% humidity, non-condensing	MCS6	802.11n (HT20)	26 dBm	-77 dBm ±1 dB
Weight	Modem: Approx. 30 grams Motherboard: 55 grams	MCS7	802.11n (HT20)	26 dBm	-75 dBm ±1 dB
Dimensions	Modem: 1.60" x 2.25" x 0.35" (40x57x9mm) Motherboard: 2.6" x 3.56" x 0.58" (70x90x14.5mm)	MCS0	802.11n (HT40)	30 dBm	-94 dBm ±1 dB
Approvals	FCC Part 15.247 IC RSS210	MCS1	802.11n (HT40)	30 dBm	-93 dBm ±1 dB
		MCS2	802.11n (HT40)	30 dBm	-90 dBm ±1 dB
		MCS3	802.11n (HT40)	28 dBm	-89 dBm ±1 dB
		MCS4	802.11n (HT40)	28 dBm	-84 dBm ±1 dB
		MCS5	802.11n (HT40)	26 dBm	-81 dBm ±1 dB
		MCS6	802.11n (HT40)	26 dBm	-75 dBm ±1 dB
		MCS7	802.11n (HT40)	26 dBm	-73 dBm ±1 dB

## Order Options

Model pX2LTE-4GL

## Contact Information

For more information please contact:



### BOCK OPTRONICS INC.

14 Steinway Blvd., Unit 7  
Toronto, Ontario M9W 6M6

Tel: (416) 674-2804  
[sales@bockoptronics.ca](mailto:sales@bockoptronics.ca)  
[www.bockoptronics.ca](http://www.bockoptronics.ca)

Copyright 2020 Microhard Systems Inc.  
Specifications subject to change without notice.

