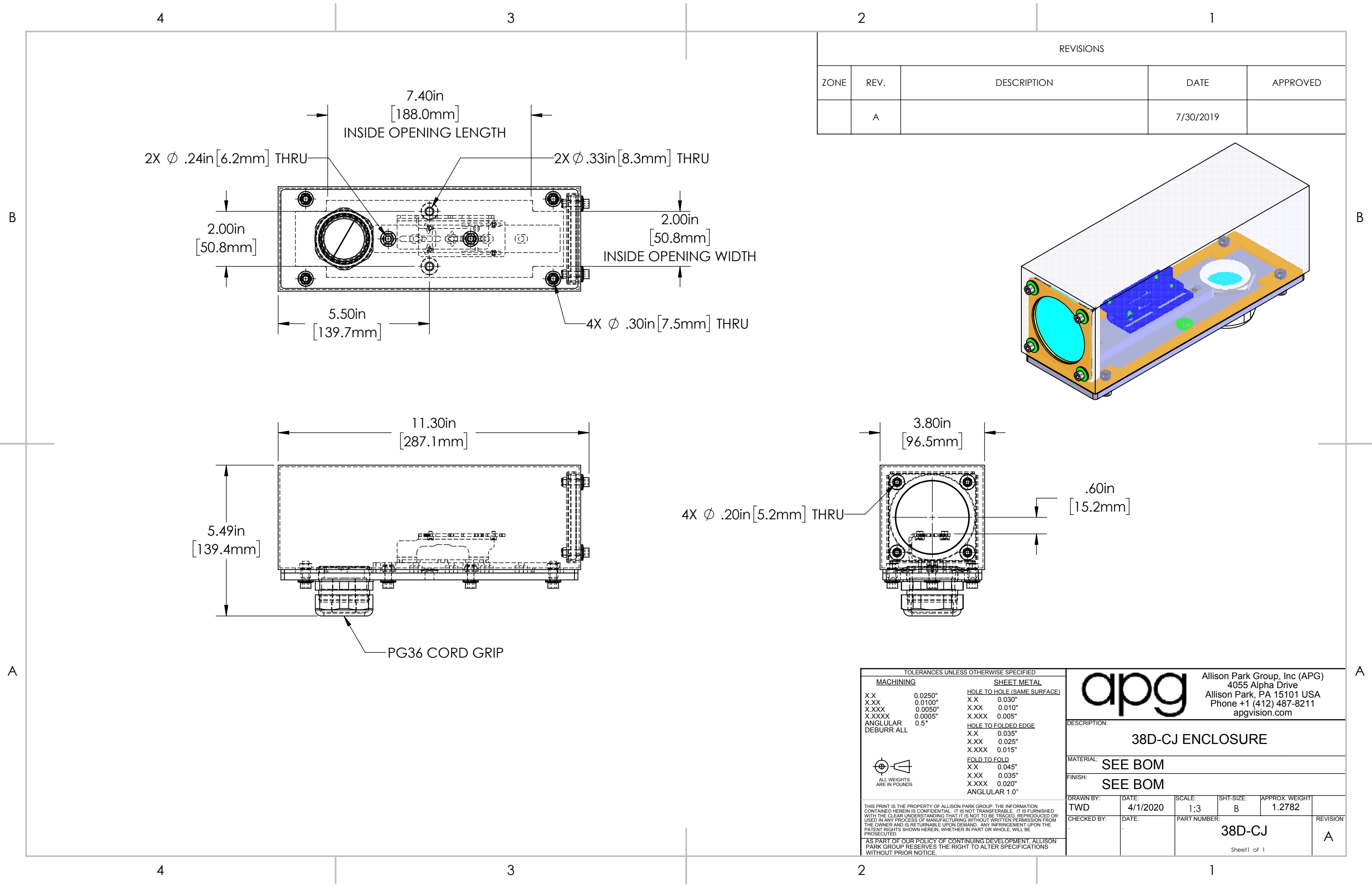


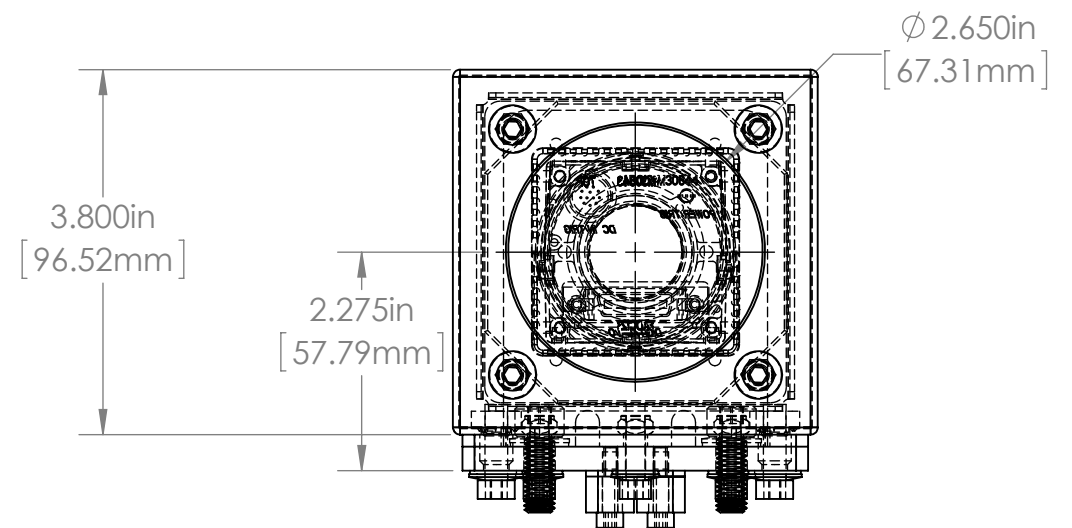
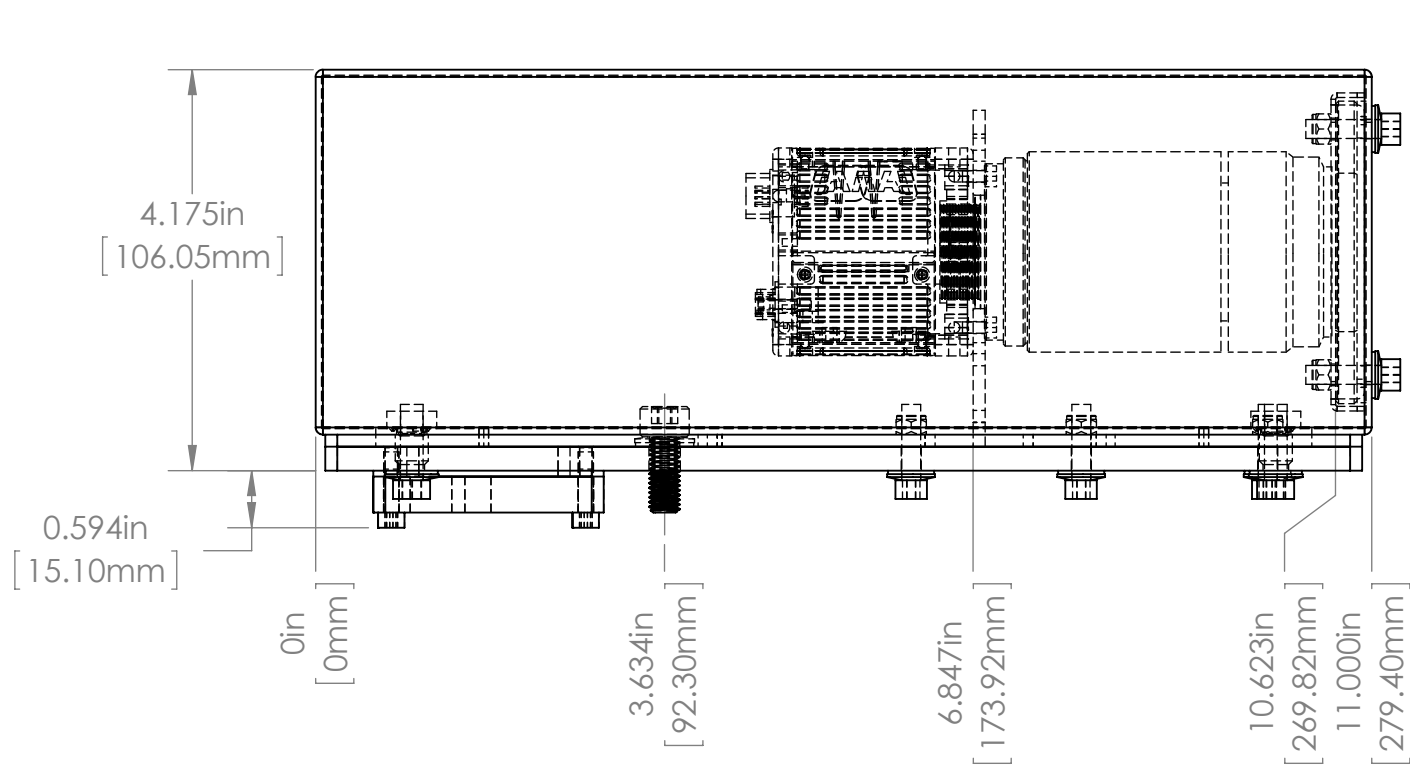
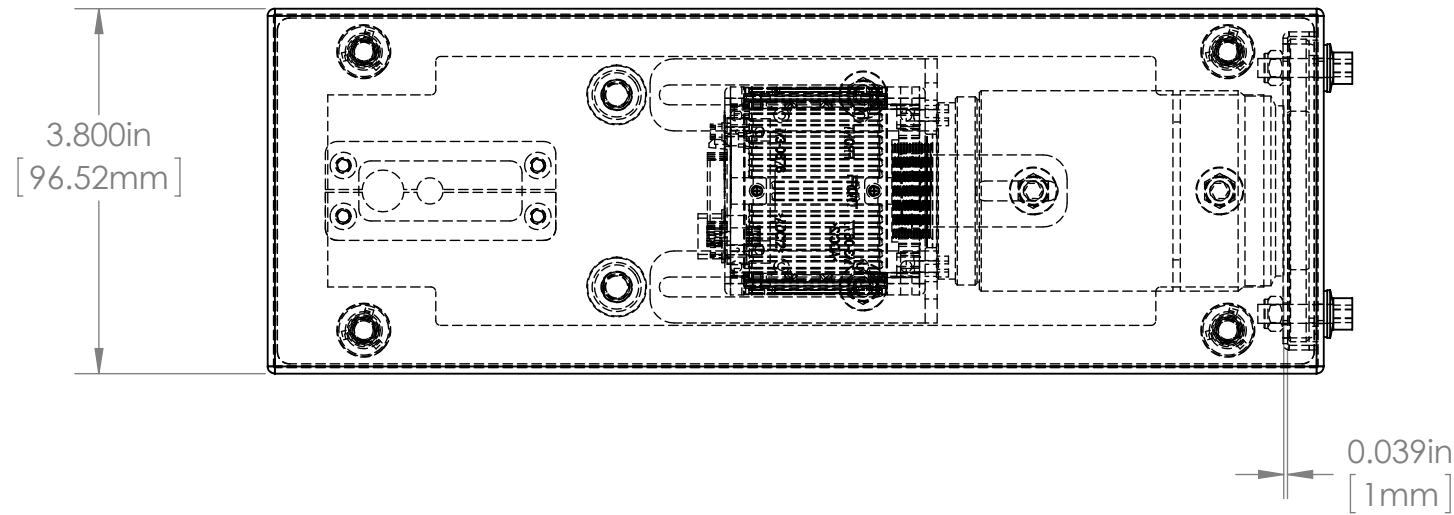
For more information please contact:

BOCK OPTRONICS INC.
14 Steinway Blvd., Unit 7
Toronto, Ontario M9W 6M6

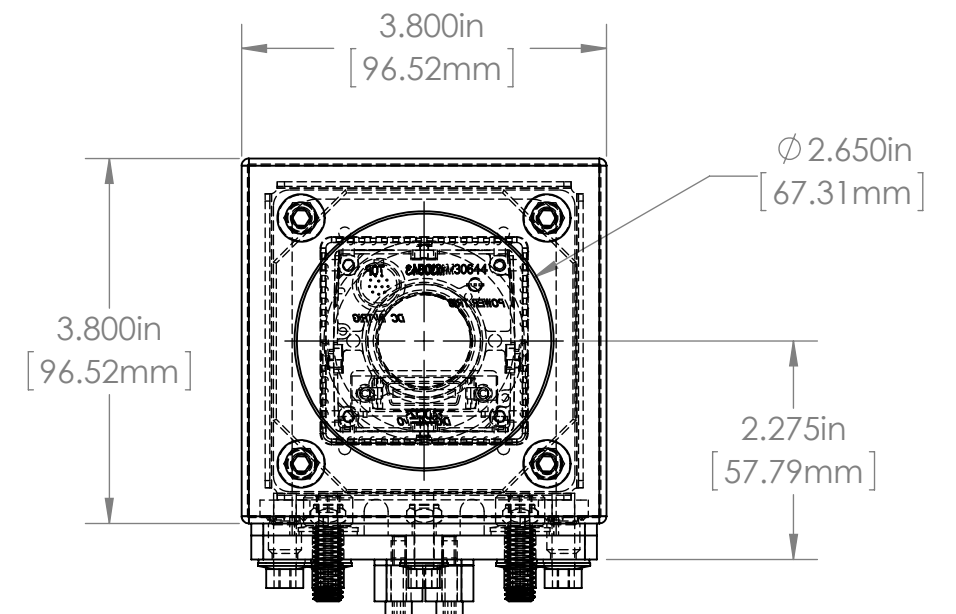
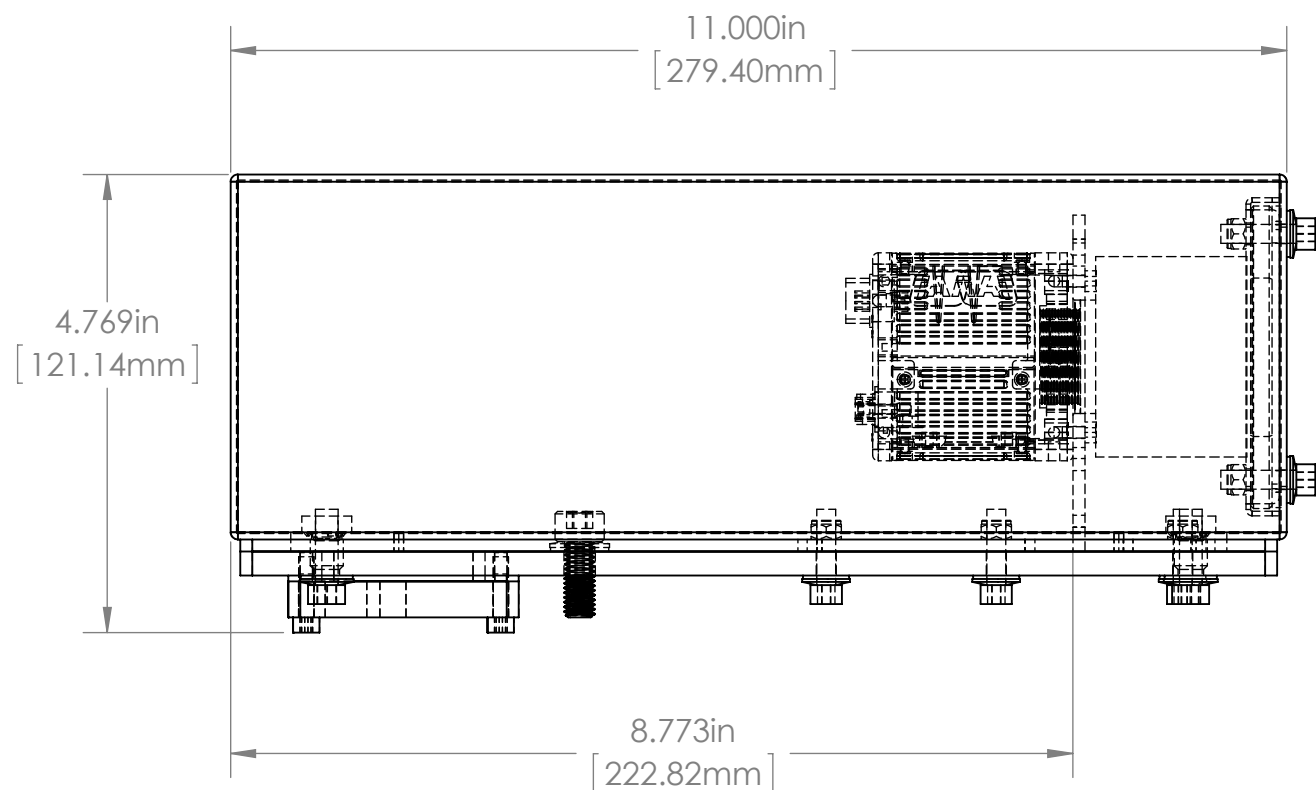
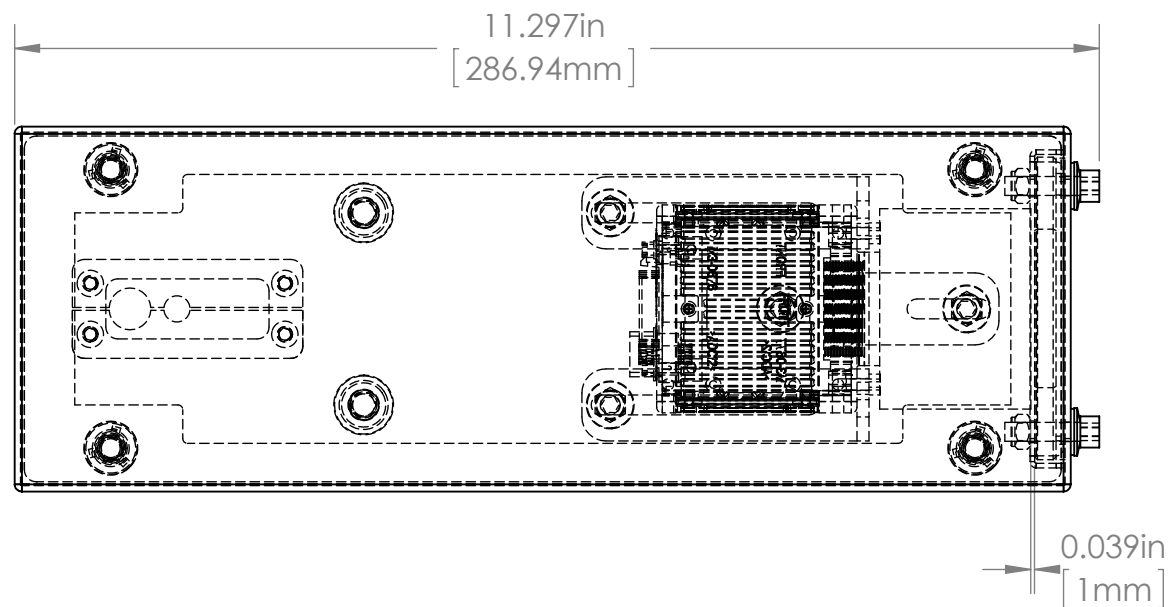
Tel: (416) 674-2804
sales@bockoptronics.ca
www.bockoptronics.ca

				UNLESS OTHERWISE SPECIFIED: DIMENSIONS ARE IN INCHES SURFACE FINISH: TOLERANCES: .000= +/- 0.005" .00= +/- 0.010"		FINISH: DEBUR AND BREAK SHARP EDGES		Allison Park Group, Inc. (APG) 4055 Alpha Drive Allison Park, PA 15101 USA		DO NOT SCALE DRAWING	REVISION
				LINEAR:				Phone +1 (412) 487-8211 Fax +1 (412) 486-3157		This document is the property of APG and is considered company confidential. The information in this document is the property of APG and may not be used, reproduced, or distributed in whole or in part without the prior written permission of APG	
								www.apgvision.com		TITLE:	
										38D-PT1 ASSEMBLY	
								MATERIAL: FOOT: 304 STAINLESS STEEL BASE: 6061 T6 ALUMINUM		DWG NO.	
										38D-PT1	
								WEIGHT:		SCALE: 1:1	
										SHEET 1 OF 1	
										A3	
NO.	CHANGE	DATE	INIT.								

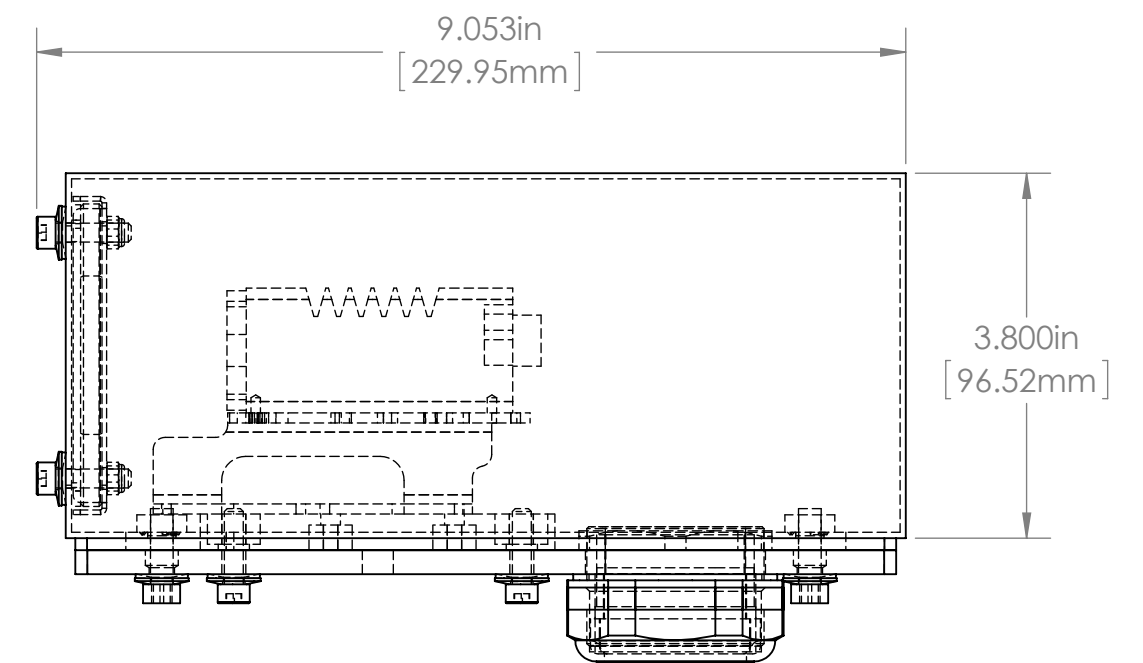
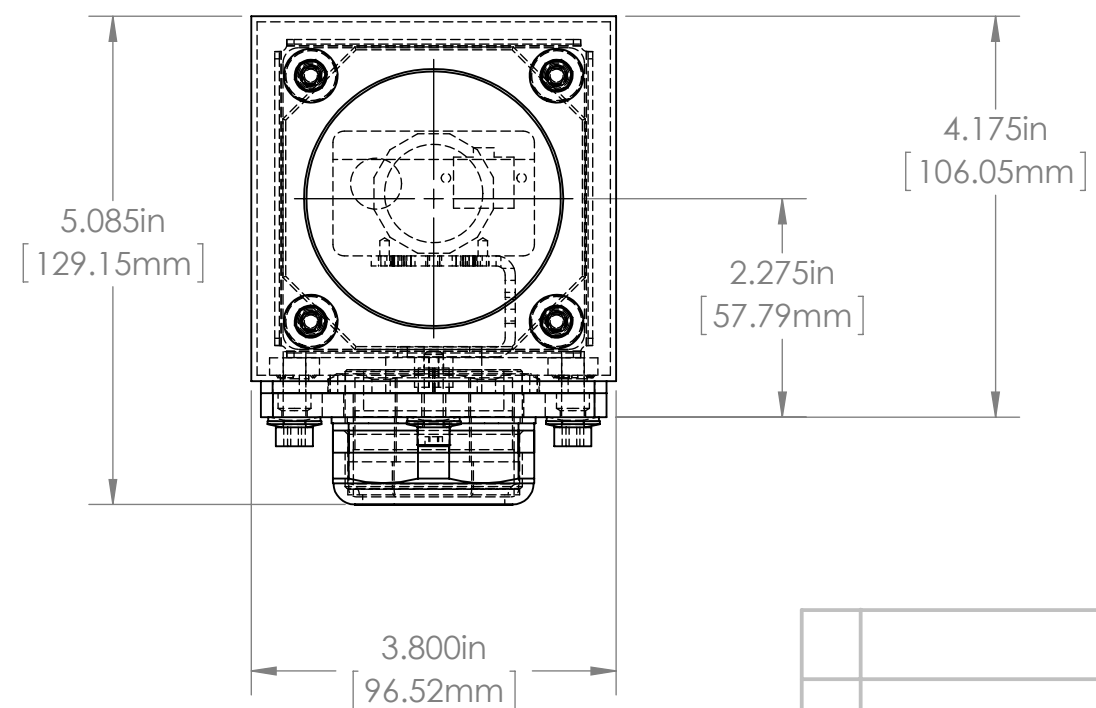
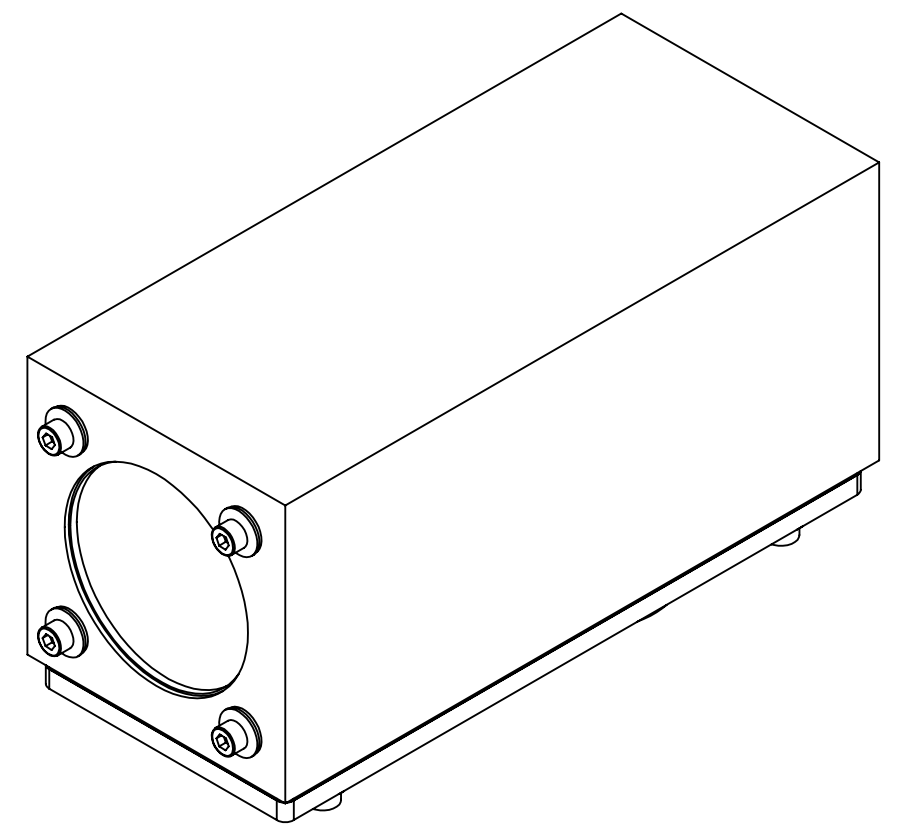
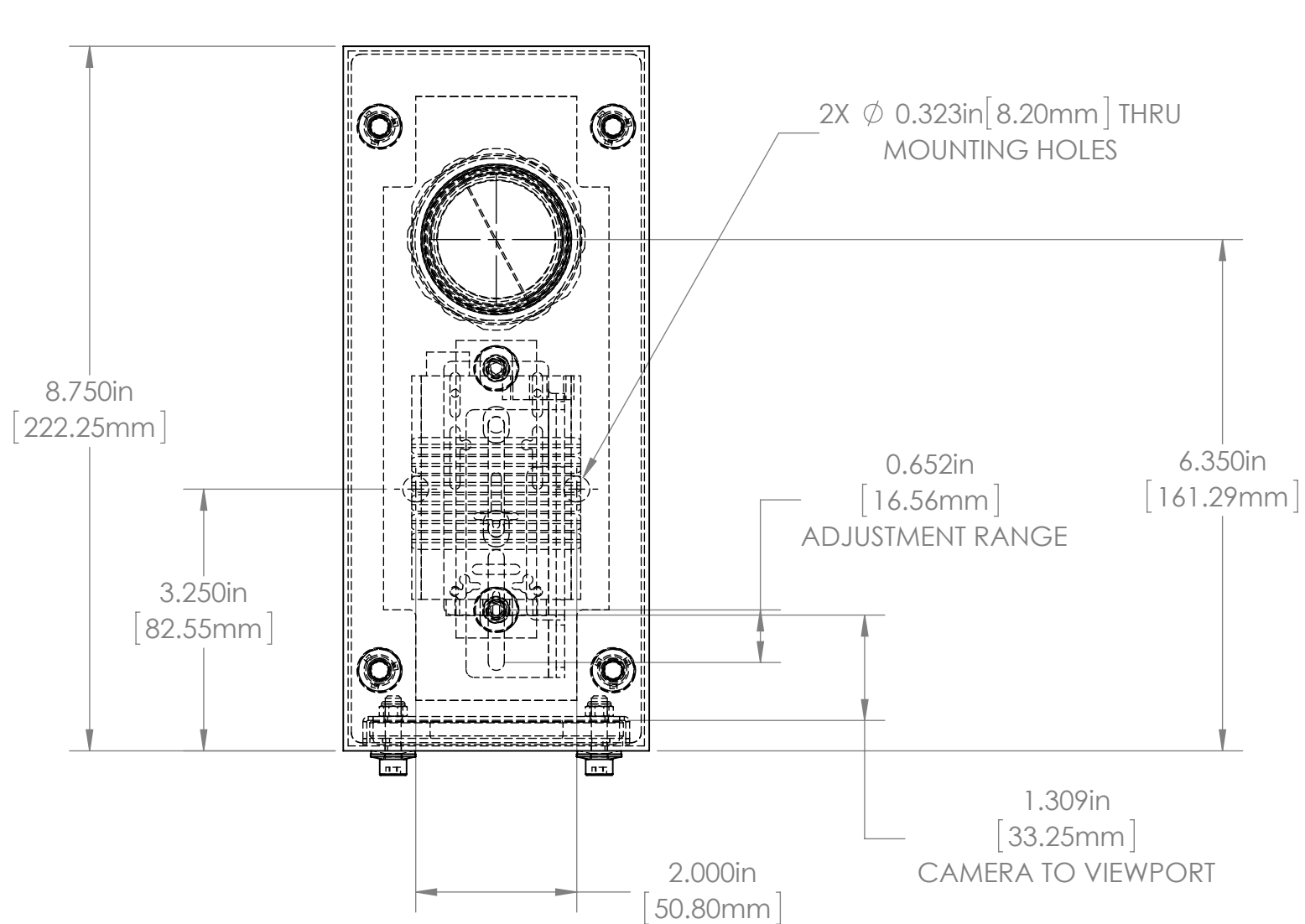




				UNLESS OTHERWISE SPECIFIED: DIMENSIONS ARE IN INCHES SURFACE FINISH: TOLERANCES: .000= +/- 0.005" .00= +/- 0.010"				FINISH: BURNISHED		Allison Park Group, Inc. (APG) 4055 Alpha Drive Allison Park, PA 15101 USA				DO NOT SCALE DRAWING		REVISION											
				LINEAR:				DEBUR AND BREAK SHARP EDGES		Phone +1 (412) 487-8211 Fax +1 (412) 486-3157				This document is the property of APG and is considered company confidential. The information in this document is the property of APG and may not be used, reproduced, or distributed in whole or in part without the prior written permission of APG													
				NAME		SIGNATURE		DATE		www.apgvision.com				TITLE: 38D-BE (JAI)													
				DRAWN SCHUBERT				3/28/2012																			
				CHK'D																							
				APPV'D																							
				MFG																							
				Q.A																							
				NOTES: LONG LENS								MATERIAL:				DWG NO. 38D-BE ASSY DIMS				A3							
NO.		CHANGE		DATE		INIT.										WEIGHT:				SCALE:1:2				SHEET 1 OF 2			



				UNLESS OTHERWISE SPECIFIED: DIMENSIONS ARE IN INCHES SURFACE FINISH: TOLERANCES: .000= +/- 0.005" .00= +/- 0.010"		FINISH: BURNISHED		Allison Park Group, Inc. (APG) 4055 Alpha Drive Allison Park, PA 15101 USA	DO NOT SCALE DRAWING		REVISION	
				LINEAR:		DEBUR AND BREAK SHARP EDGES			This document is the property of APG and is considered company confidential. The information in this document is the property of APG and may not be used, reproduced, or distributed in whole or in part without the prior written permission of APG			
					NAME	SIGNATURE	DATE		TITLE:			
				DRAWN	SCHUBERT		3/28/2012	Phone +1 (412) 487-8211 Fax +1 (412) 486-3157	38D-BE (JAI)			
				CHK'D				www.apgvision.com				
				APPV'D								
				MFG				MATERIAL:	DWG NO. 38D-BE ASSY DIMS		A3	
				Q.A								
				NOTES:				WEIGHT:	SCALE:1:2		SHEET 2 OF 2	
				SHORT LENS								
NO.	CHANGE		DATE	INIT.								



				UNLESS OTHERWISE SPECIFIED: DIMENSIONS ARE IN INCHES SURFACE FINISH: TOLERANCES: .000= +/- 0.005" .00= +/- 0.010"		FINISH: BURNISHED BODY ANODIZED BASE DEBUR AND BREAK SHARP EDGES		Allison Park Group, Inc. (APG) 4055 Alpha Drive Allison Park, PA 15101 USA		DO NOT SCALE DRAWING		REVISION	
				LINEAR:				Phone +1 (412) 487-8211 Fax +1 (412) 486-3157		This document is the property of APG and is considered company confidential. The information in this document is the property of APG and may not be used, reproduced, or distributed in whole or in part without the prior written permission of APG			
					NAME	SIGNATURE	DATE	TITLE:					
				DRAWN			3/13/2014	38D-AU					
				CHK'D									
				APPV'D									
				MFG									
				Q.A				MATERIAL: BODY 304 STAINLESS STEEL BASE 6061 T6 GASKET 40D SILICONE		DWG NO.		A3	
				NOTES:				WEIGHT:		SCALE:1:2		SHEET 1 OF 1	
NO.	CHANGE			DATE	INIT.			38D-AU ASSY					

4

3

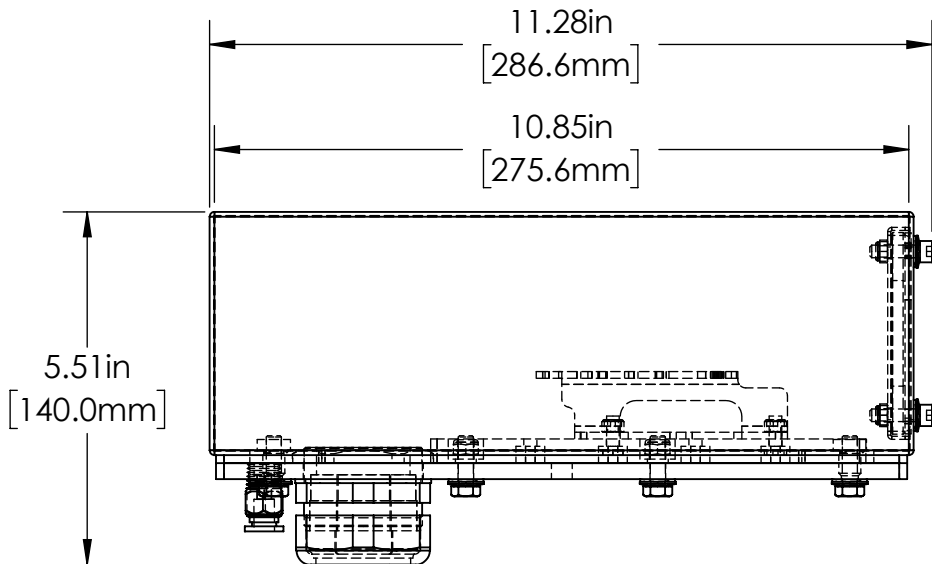
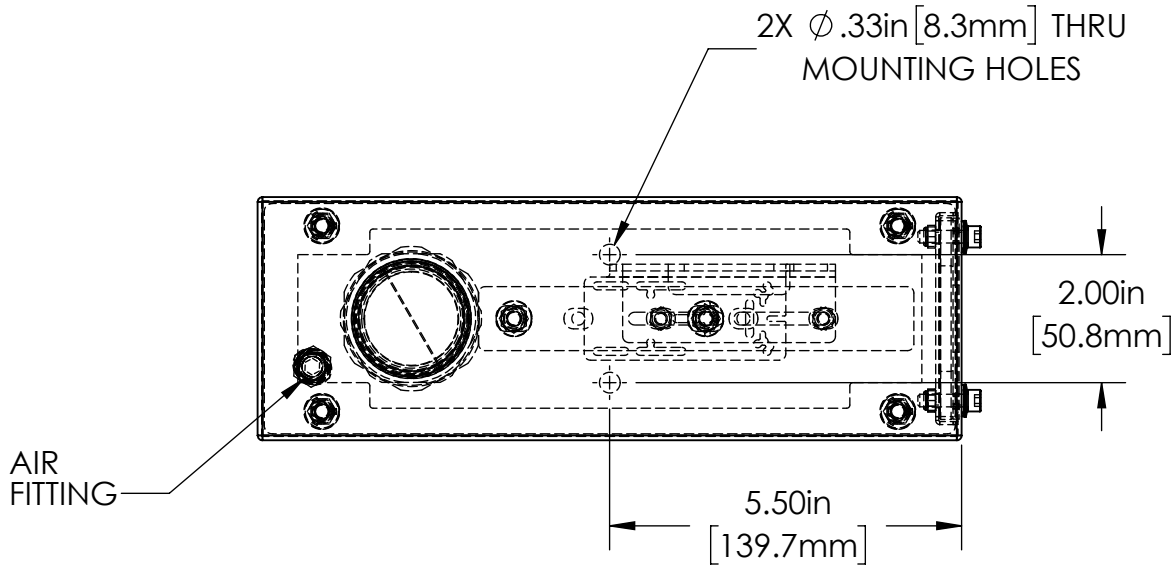
2

1

REVISIONS

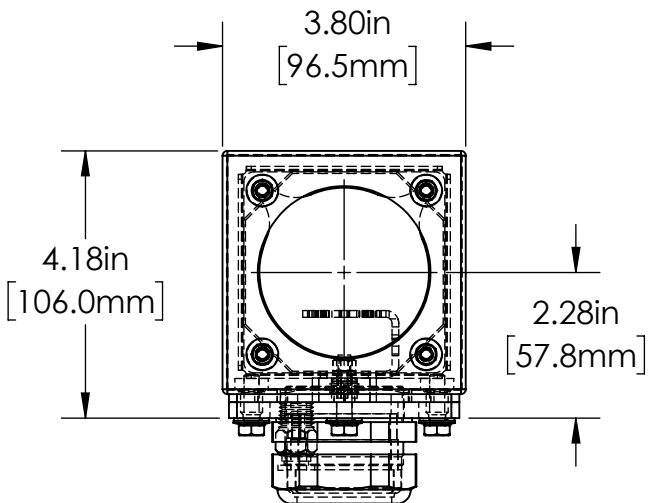
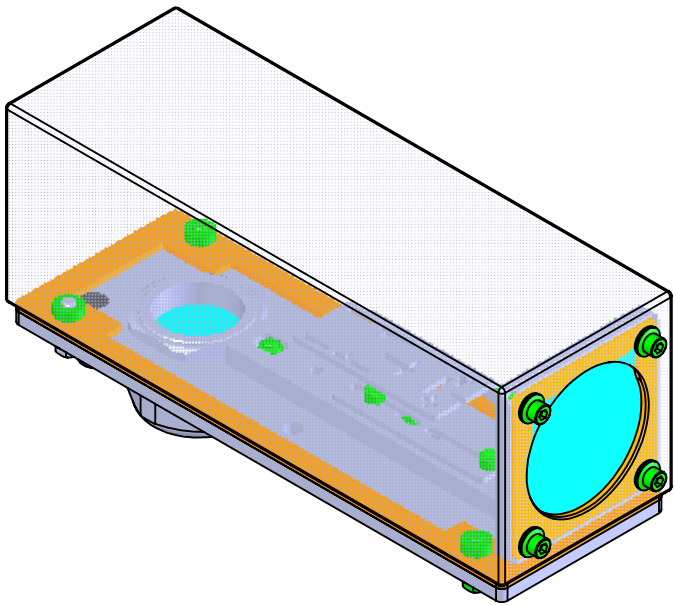
ZONE	REV.	DESCRIPTION	DATE	APPROVED
	A		7/30/2019	

B



A

B



TOLERANCES UNLESS OTHERWISE SPECIFIED			
MACHINING		SHEET METAL	
X.X	0.0250"	HOLE TO HOLE (SAME SURFACE)	
X.XX	0.0100"	X.X	0.030"
X.XXX	0.0050"	X.XX	0.010"
X.XXXX	0.0005"	X.XXX	0.005"
ANGULAR	0.5°	HOLE TO FOLDED EDGE	
DEBURR ALL		X.X	0.035"
		X.XX	0.025"
		X.XXX	0.015"
		FOLD TO FOLD	
		X.X	0.045"
		X.XX	0.035"
		X.XXX	0.020"
		ANGULAR 1.0°	



THIS PRINT IS THE PROPERTY OF ALLISON PARK GROUP. THE INFORMATION CONTAINED HEREIN IS CONFIDENTIAL. IT IS NOT TRANSFERABLE. IT IS FURNISHED WITH THE CLEAR UNDERSTANDING THAT IT IS NOT TO BE TRACED, REPRODUCED OR USED IN ANY PROCESS OF MANUFACTURING WITHOUT WRITTEN PERMISSION FROM THE OWNER AND IS RETURNABLE UPON DEMAND. ANY INFRINGEMENT UPON THE PATENT RIGHTS SHOWN HEREIN, WHETHER IN PART OR WHOLE, WILL BE PROSECUTED.

AS PART OF OUR POLICY OF CONTINUING DEVELOPMENT, ALLISON PARK GROUP RESERVES THE RIGHT TO ALTER SPECIFICATIONS WITHOUT PRIOR NOTICE.



Allison Park Group, Inc (APG)
4055 Alpha Drive
Allison Park, PA 15101 USA
Phone +1 (412) 487-8211
apgvision.com

DESCRIPTION:

38D-AP ENCLOSURE

MATERIAL:

SEE BOM

FINISH: SEE BOM

DRAWN BY: KENNEDY	DATE: 8/30/2019	SCALE: 1:3	SHT-SIZE: B	APPROX. WEIGHT: 2.9085	
CHECKED BY:	DATE:	PART NUMBER: 38D-AP			REVISION A

Sheet1 of 1

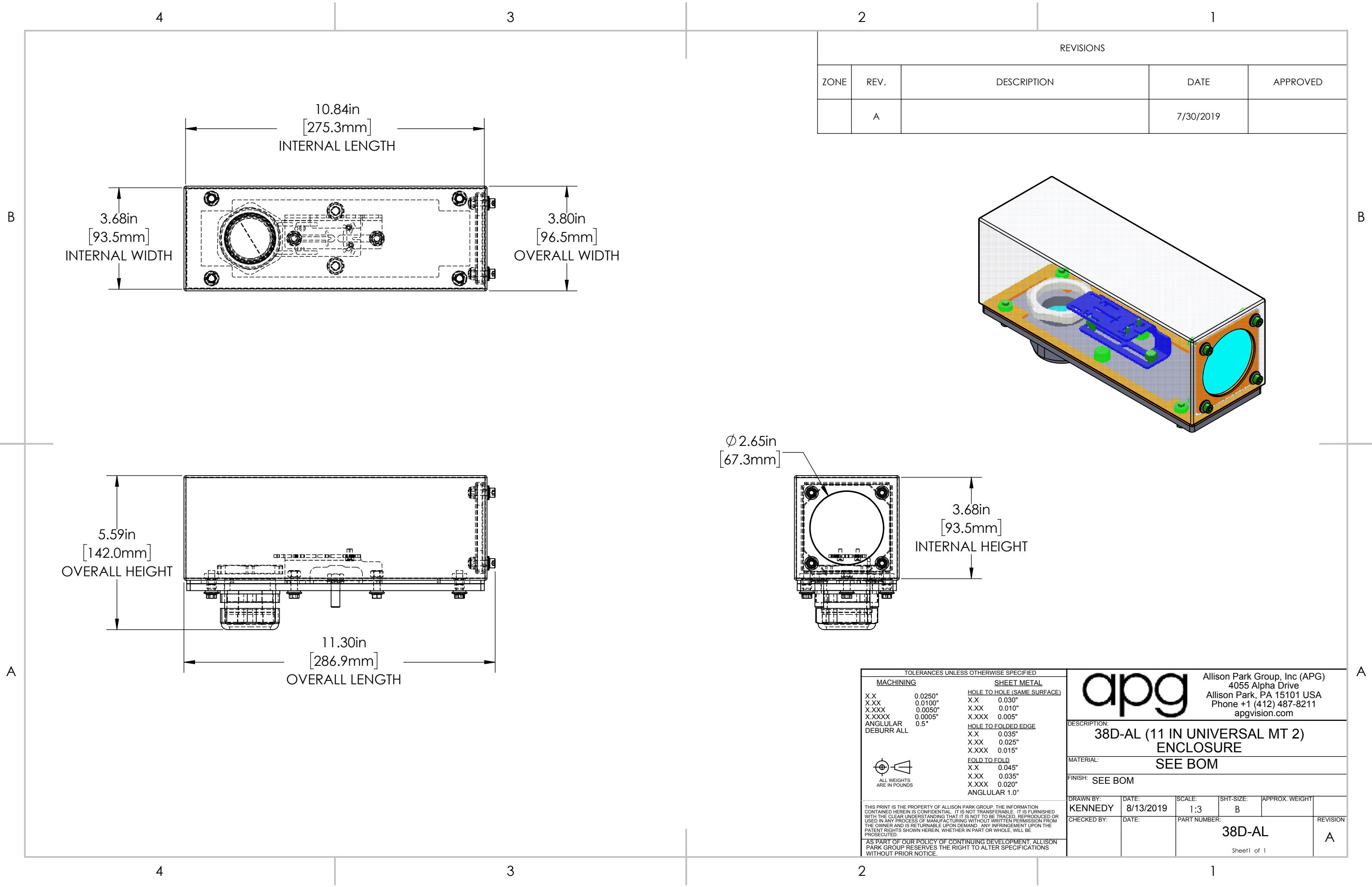
4

3

2


1

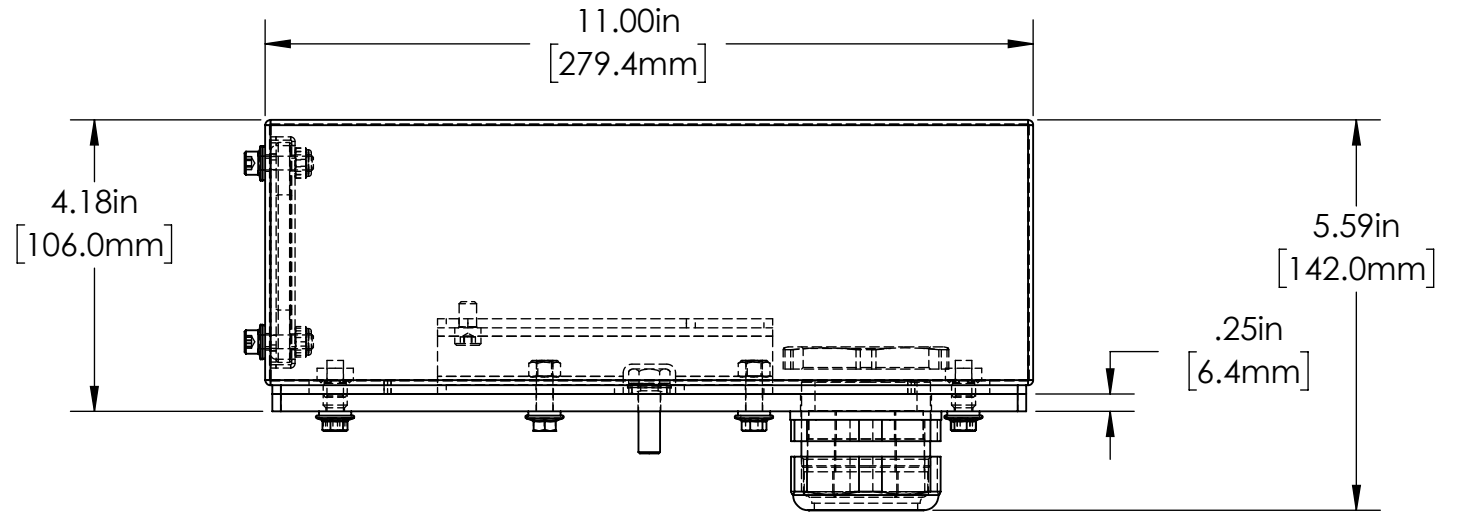
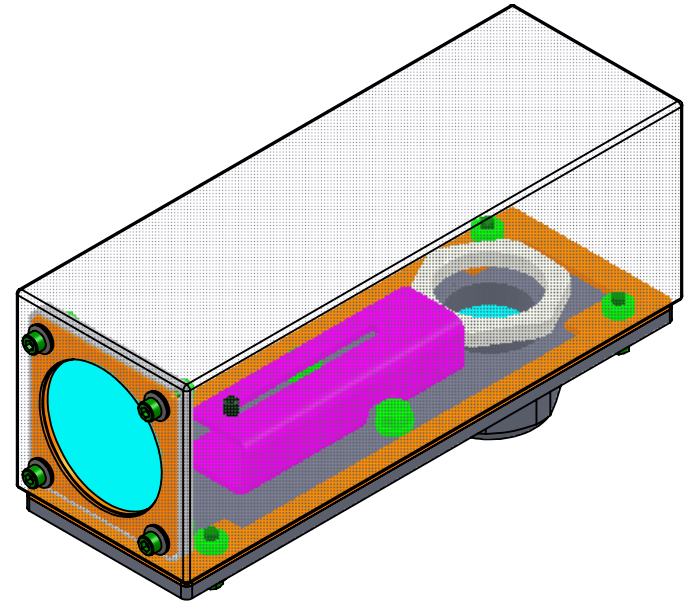
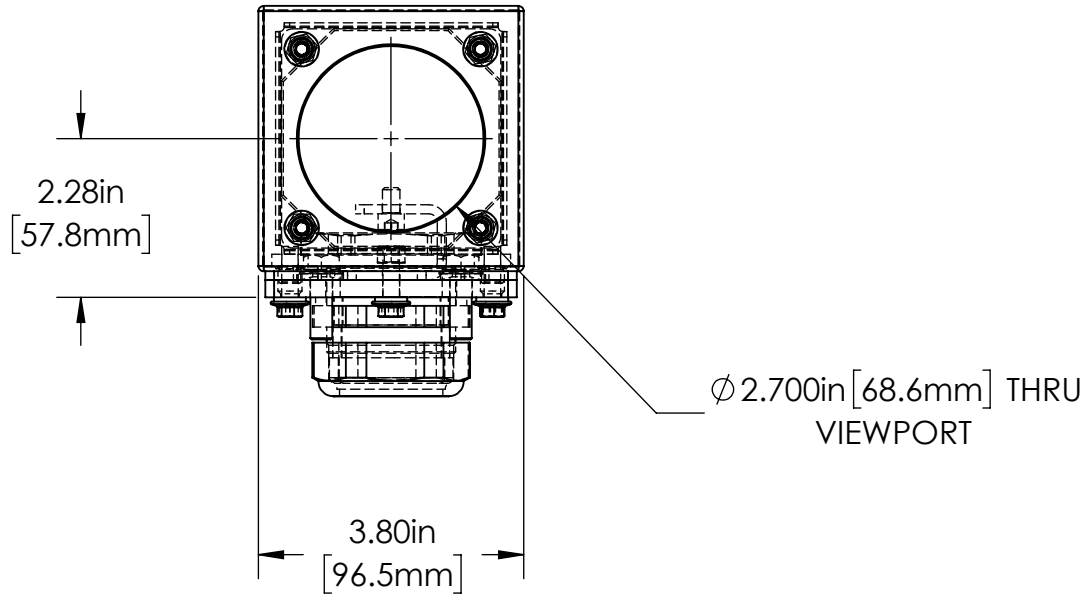
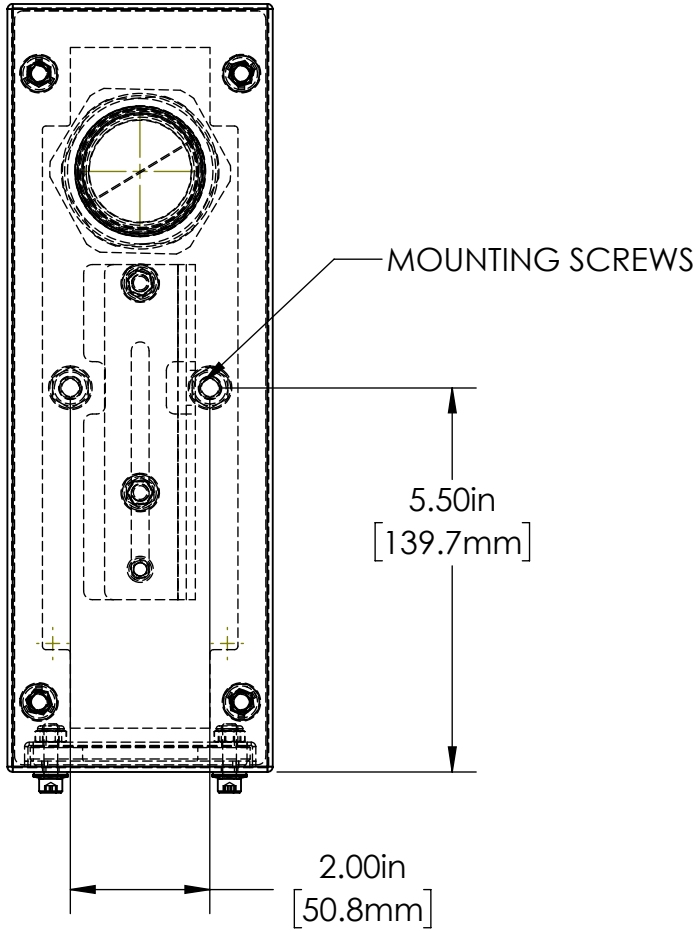
A



REVISIONS				
ZONE	REV.	DESCRIPTION	DATE	APPROVED
	A		7/30/2019	

TOLERANCES UNLESS OTHERWISE SPECIFIED			
MACHINING		SHEET METAL	
X.X	0.0250"	HOLE TO HOLE (SAME SURFACE)	
X.XX	0.0100"	X.X	0.030"
X.XXX	0.0050"	X.XX	0.010"
X.XXXX	0.0005"	X.XXX	0.005"
ANGULAR	0.5°	HOLE TO FOLDED EDGE	
DEBURR ALL		X.X	0.035"
		X.XX	0.025"
		X.XXX	0.015"
		FOLD TO FOLD	
		X.X	0.045"
		X.XX	0.035"
		X.XXX	0.020"
		ANGULAR 1.0°	


		Allison Park Group, Inc (APG) 4055 Alpha Drive Allison Park, PA 15101 USA Phone +1 (412) 487-8211 apgvision.com			
DESCRIPTION: 38D-AL (11 IN UNIVERSAL MT 2) ENCLOSURE					
MATERIAL:		SEE BOM			
FINISH: SEE BOM					
DRAWN BY:	DATE:	SCALE:	SHT-SIZE:	APPROX. WEIGHT	
KENNEDY	8/13/2019	1:3	B		
CHECKED BY:	DATE:	PART NUMBER:			REVISION
		38D-AL			A
Sheet1 of 1					



TOLERANCES UNLESS OTHERWISE SPECIFIED			
MACHINING		SHEET METAL	
X.X	0.0250"	HOLE TO HOLE (SAME SURFACE)	
X.XX	0.0100"	X.X	0.030"
X.XXX	0.0050"	X.XX	0.010"
X.XXXX	0.0005"	X.XXX	0.005"
ANGULAR	0.5°	HOLE TO FOLDED EDGE	
DEBURR ALL		X.X	0.035"
		X.XX	0.025"
		X.XXX	0.015"
		FOLD TO FOLD	
		X.X	0.045"
		X.XX	0.035"
		X.XXX	0.020"
		ANGULAR	1.0°

THIS PRINT IS THE PROPERTY OF ALLISON PARK GROUP. THE INFORMATION CONTAINED HEREIN IS CONFIDENTIAL. IT IS NOT TRANSFERABLE. IT IS FURNISHED WITH THE CLEAR UNDERSTANDING THAT IT IS NOT TO BE TRACED, REPRODUCED OR USED IN ANY PROCESS OF MANUFACTURING WITHOUT WRITTEN PERMISSION FROM THE OWNER AND IS RETURNABLE UPON DEMAND. ANY INFRINGEMENT UPON THE PATENT RIGHTS SHOWN HEREIN, WHETHER IN PART OR WHOLE, WILL BE PROSECUTED.

AS PART OF OUR POLICY OF CONTINUING DEVELOPMENT, ALLISON PARK GROUP RESERVES THE RIGHT TO ALTER SPECIFICATIONS WITHOUT PRIOR NOTICE.

		Allison Park Group, Inc (APG) 4055 Alpha Drive Allison Park, PA 15101 USA Phone +1 (412) 487-8211 apgvision.com		
DESCRIPTION: 38D-AH ENCLOSURE				
MATERIAL: 6061 T6 ALUMINUM BASE SEE BOM 304 STAINLESS STEEL BODY				
FINISH: SEE BOM BURNISHED				
DRAWN BY: KENNEDY	DATE: 8/30/2019	SCALE: 1:5	SHT-SIZE: B	APPROX. WEIGHT
CHECKED BY:	DATE:	PART NUMBER: 38D-DF ASSY		REVISION A
PAGE 1 of 1				

4

3

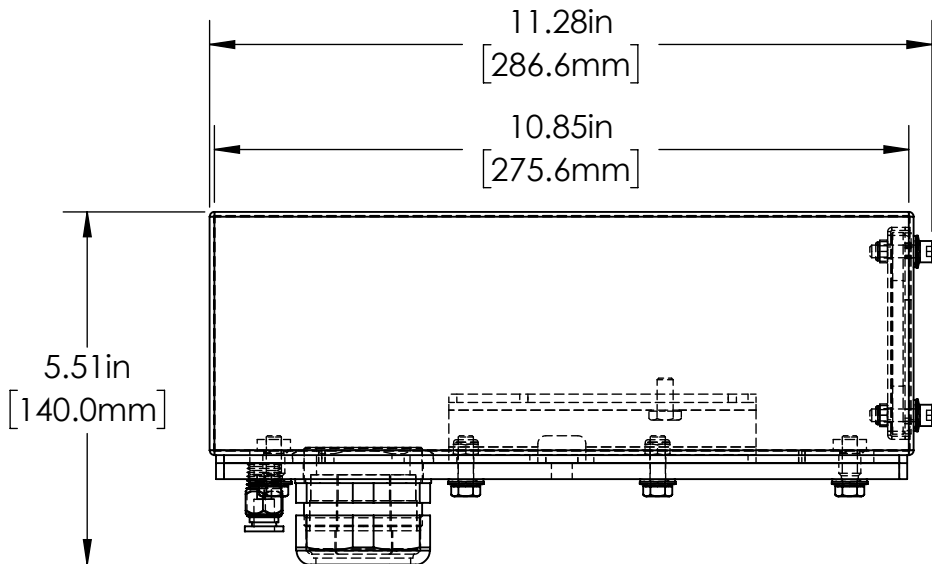
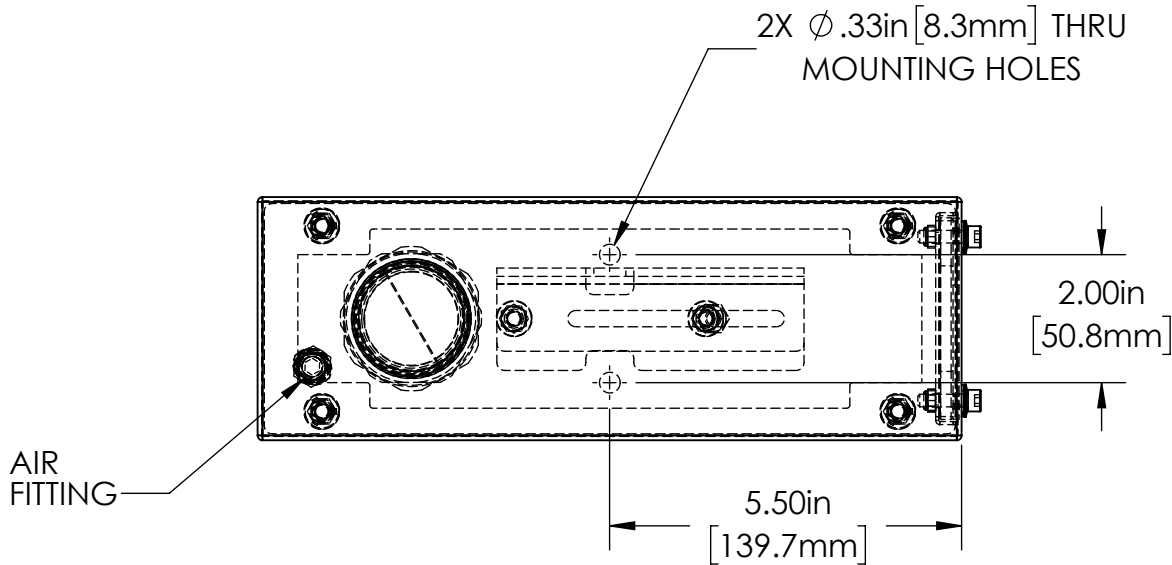
2

1

REVISIONS

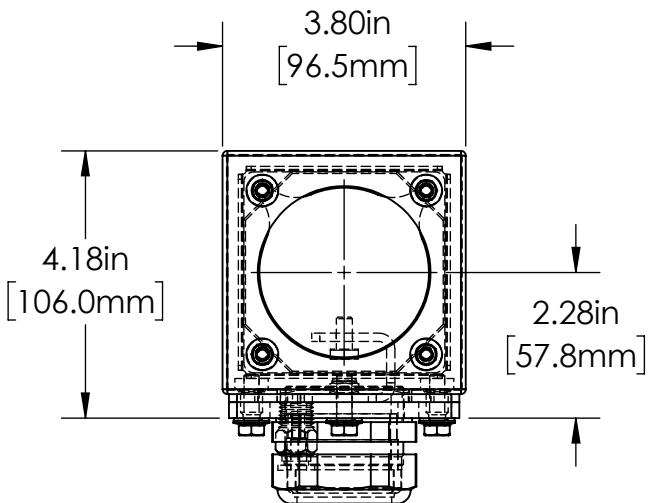
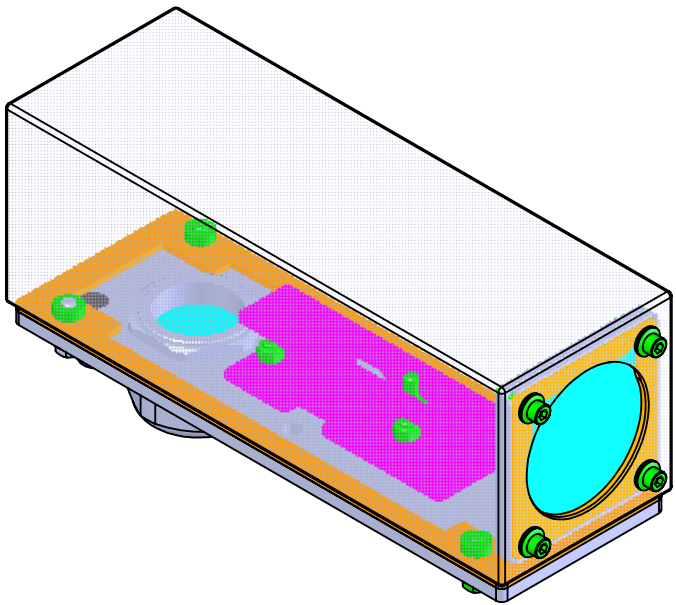
ZONE	REV.	DESCRIPTION	DATE	APPROVED
	A		7/30/2019	

B

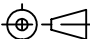


A

B



A

TOLERANCES UNLESS OTHERWISE SPECIFIED			
MACHINING		SHEET METAL	
X.X	0.0250"	<u>HOLE TO HOLE (SAME SURFACE)</u>	
X.XX	0.0100"	X.X	0.030"
X.XXX	0.0050"	X.XX	0.010"
X.XXXX	0.0005"	X.XXX	0.005"
ANGULAR	0.5°	<u>HOLE TO FOLDED EDGE</u>	
DEBURR ALL		X.X	0.035"
		X.XX	0.025"
		X.XXX	0.015"
		<u>FOLD TO FOLD</u>	
		X.X	0.045"
		X.XX	0.035"
		X.XXX	0.020"
		ANGULAR 1.0°	
			
ALL WEIGHTS ARE IN POUNDS			
THIS PRINT IS THE PROPERTY OF ALLISON PARK GROUP. THE INFORMATION CONTAINED HEREIN IS CONFIDENTIAL. IT IS NOT TRANSFERABLE. IT IS FURNISHED WITH THE CLEAR UNDERSTANDING THAT IT IS NOT TO BE TRACED, REPRODUCED OR USED IN ANY PROCESS OF MANUFACTURING WITHOUT WRITTEN PERMISSION FROM THE OWNER AND IS RETURNABLE UPON DEMAND. ANY INFRINGEMENT UPON THE PATENT RIGHTS SHOWN HEREIN, WHETHER IN PART OR WHOLE, WILL BE PROSECUTED.			
AS PART OF OUR POLICY OF CONTINUING DEVELOPMENT, ALLISON PARK GROUP RESERVES THE RIGHT TO ALTER SPECIFICATIONS WITHOUT PRIOR NOTICE.			



Allison Park Group, Inc (APG)
4055 Alpha Drive
Allison Park, PA 15101 USA
Phone +1 (412) 487-8211
apgvision.com

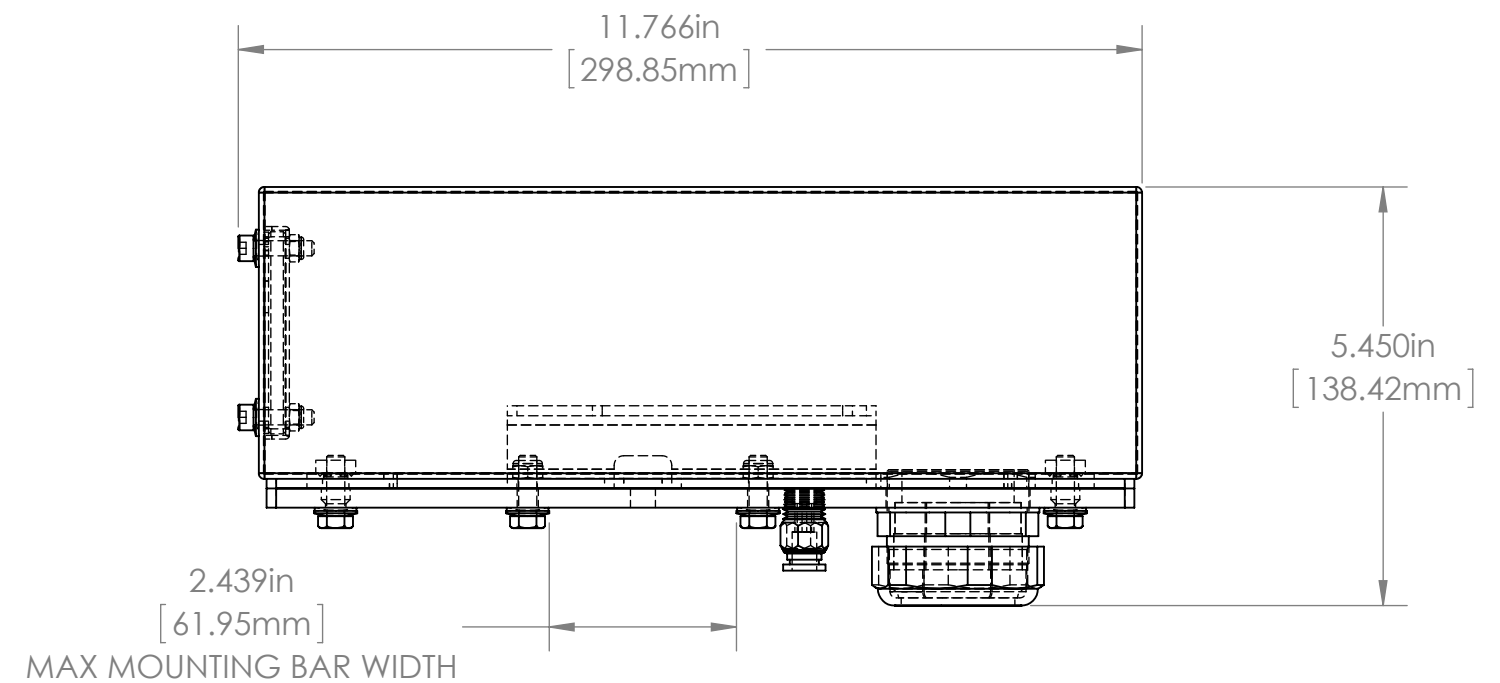
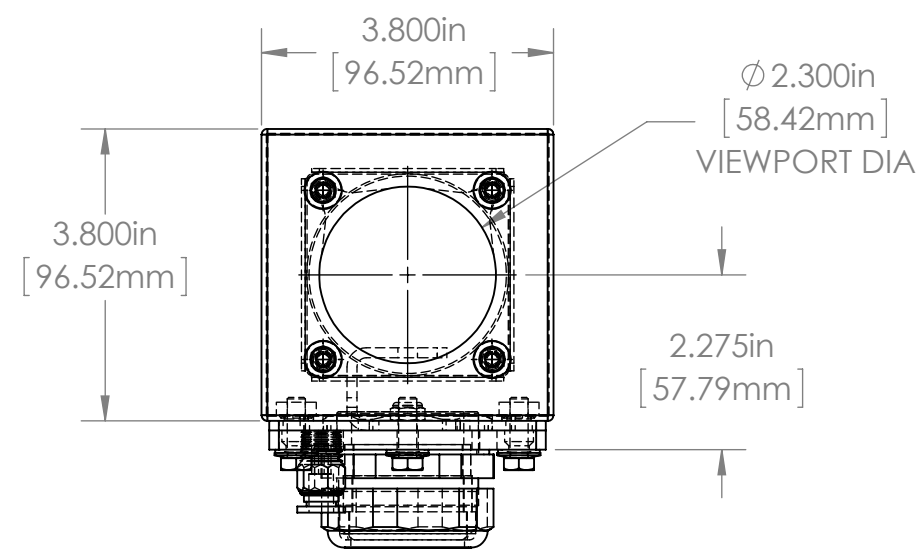
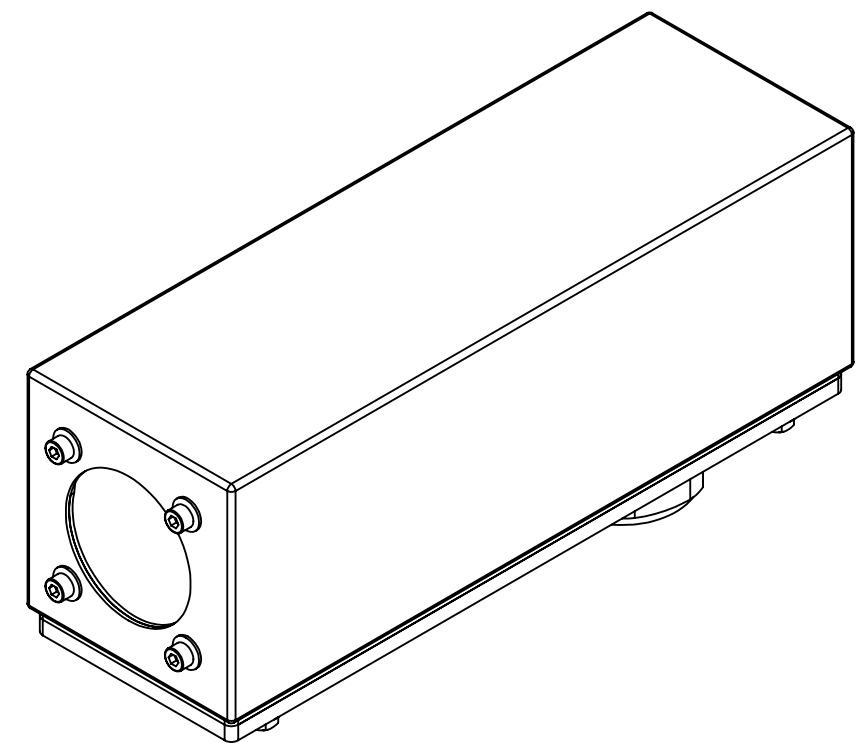
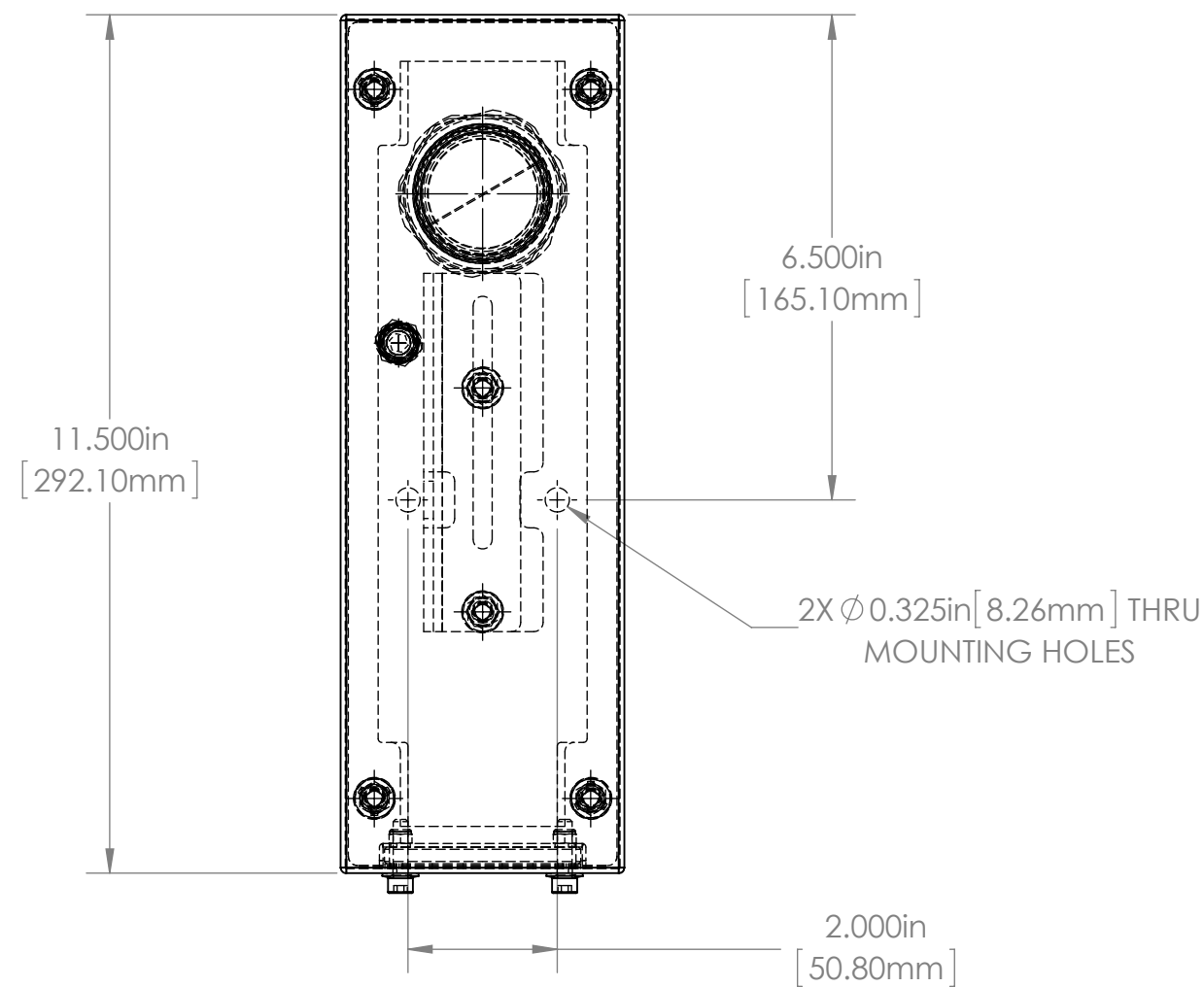
DESCRIPTION:				
38D-AG ENCLOSURE				
MATERIAL:				
SEE BOM				
FINISH: SEE BOM				
DRAWN BY:	DATE:	SCALE:	SHT-SIZE:	APPROX. WEIGHT
KENNEDY	8/30/2019	1:3	B	1.4489
CHECKED BY:	DATE:	PART NUMBER:		REVISION
		38D-AG		A
Sheet1 of 1				

4

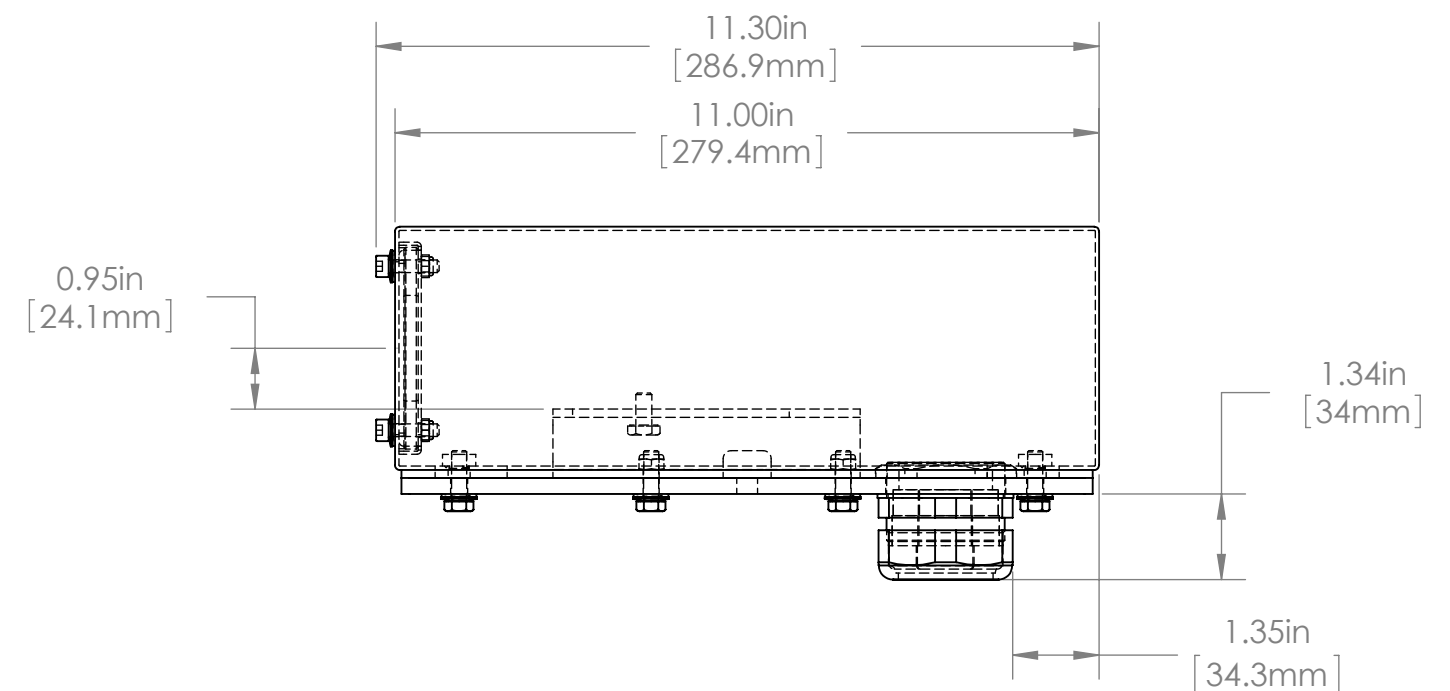
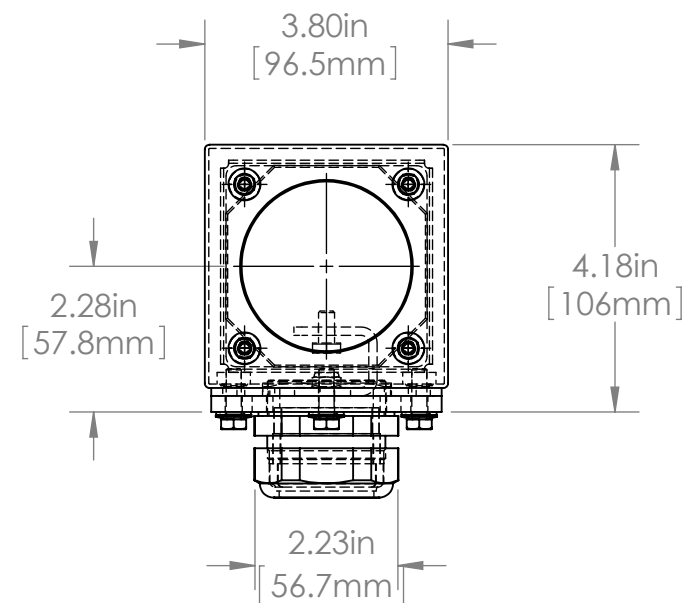
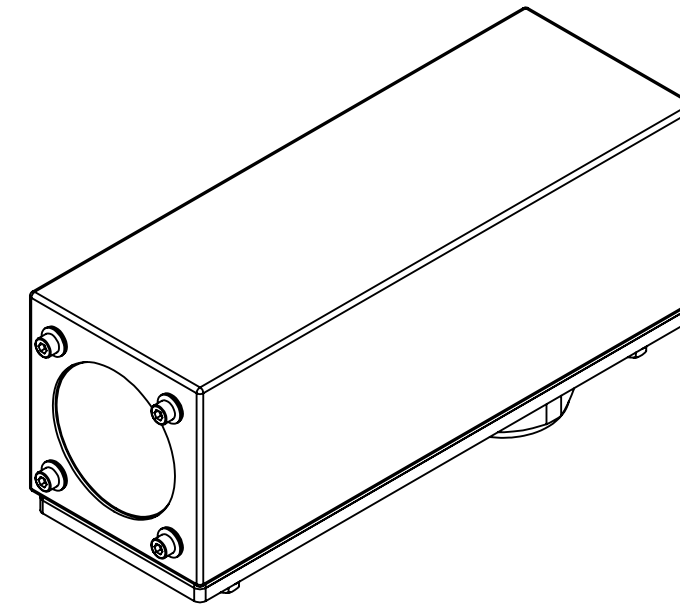
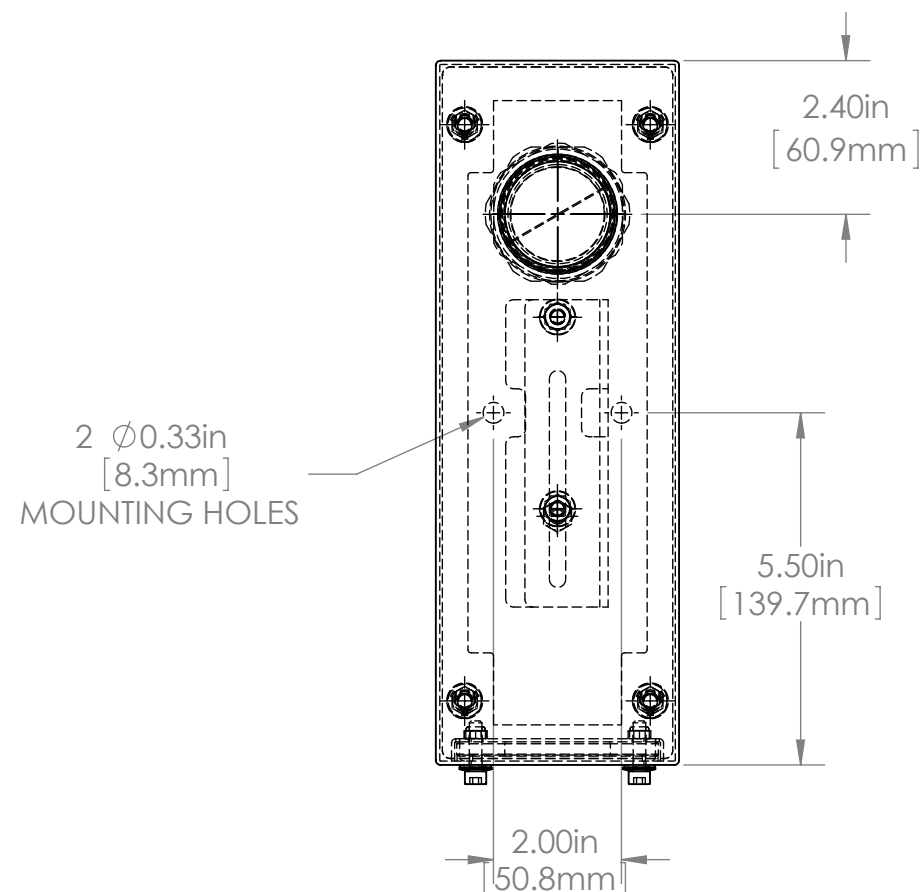
3

2

1



				UNLESS OTHERWISE SPECIFIED: DIMENSIONS ARE IN INCHES SURFACE FINISH: TOLERANCES: .000= +/- 0.005" .00= +/- 0.010"		FINISH: DEBUR AND BREAK SHARP EDGES		Allison Park Group, Inc. (APG) 4055 Alpha Drive Allison Park, PA 15101 USA		DO NOT SCALE DRAWING		REVISION	
				LINEAR:				Phone +1 (412) 487-8211 Fax +1 (412) 486-3157		This document is the property of APG and is considered company confidential. The information in this document is the property of APG and may not be used, reproduced, or distributed in whole or in part without the prior written permission of APG			
					NAME	SIGNATURE	DATE	www.apgvision.com		TITLE: 38D-AE			
				DRAWN	SCHUBERT		3/28/2012						
				CHK'D									
				APPV'D									
				MFG									
				Q.A				MATERIAL:		DWG NO.		A3	
				NOTES:						38D-AE			
NO.	CHANGE	DATE	INIT.					WEIGHT:		SCALE:1:5		SHEET 1 OF 1	



For more information please contact:

BOCK OPTRONICS INC.
14 Steinway Blvd., Unit 7
Toronto, Ontario M9W 6M6

Tel: (416) 674-2804
sales@bockoptronics.ca
www.bockoptronics.ca

				UNLESS OTHERWISE SPECIFIED: DIMENSIONS ARE IN INCHES SURFACE FINISH: TOLERANCES: .000= +/- 0.005" .00= +/- 0.010"		FINISH: DEBUR AND BREAK SHARP EDGES		Allison Park Group, Inc. (APG) 4055 Alpha Drive Allison Park, PA 15101 USA		DO NOT SCALE DRAWING		REVISION		
				LINEAR:				Phone +1 (412) 487-8211 Fax +1 (412) 486-3157		This document is the property of APG and is considered company confidential. The information in this document is the property of APG and may not be used, reproduced, or distributed in whole or in part without the prior written permission of APG				
					NAME	SIGNATURE	DATE	www.apgvision.com						
				DRAWN	SCHUBERT		7/15/2010							
				CHK'D										
				APPV'D										
				MFG				MATERIAL: 304 STAINLESS STEEL BODY 6061 T6 ALUMINUM BASE		TITLE: 38D 11" BODY UNIVERSAL MOUNT 1				
				Q.A										
				NOTES:						DWG NO. 38D-AB		A3		
										38D-AH				
NO.	CHANGE		DATE	INIT.					WEIGHT:		SCALE:1:5		SHEET 1 OF 1	