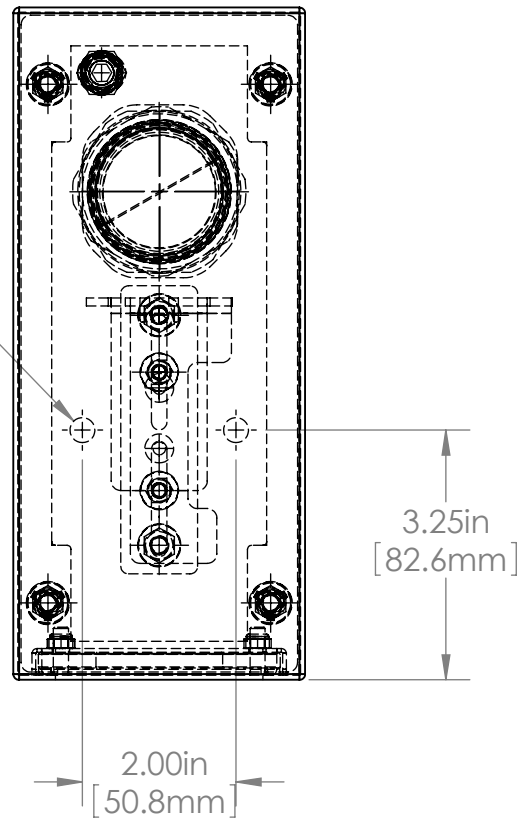
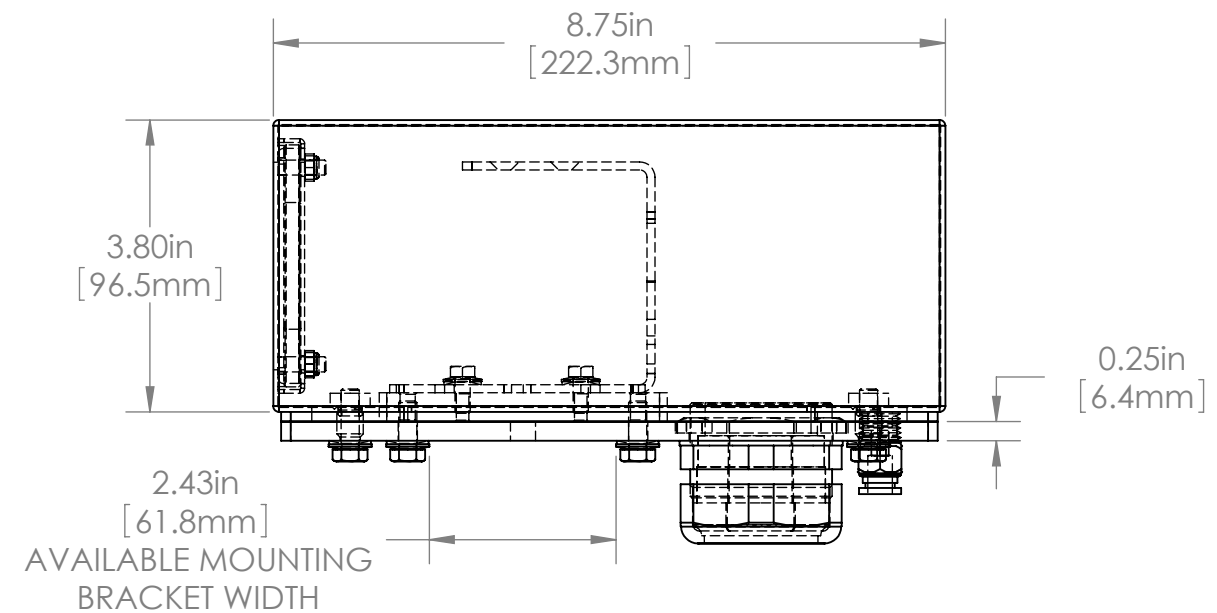
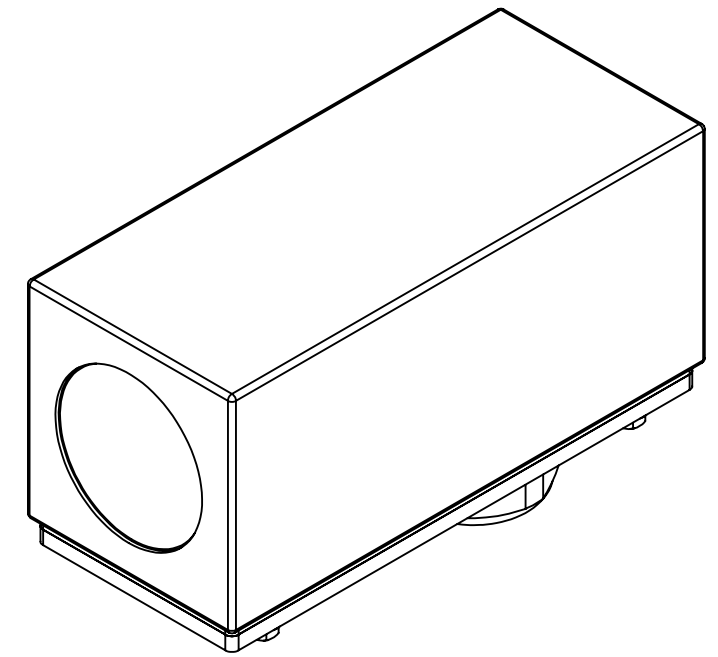
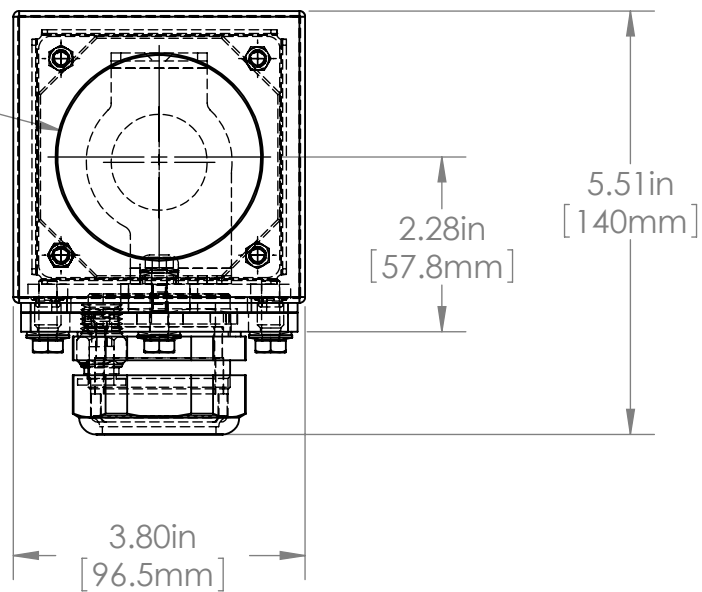


Ø0.33in  
[8.3mm]  
MOUNTING HOLES



Ø2.65in  
[67.3mm]  
VIEWPORT



|     |        |      |       |   |          |  |           |  |  |   |  |              |  |
|-----|--------|------|-------|---|----------|--|-----------|--|--|---|--|--------------|--|
|     |        |      |       | UNLESS OTHERWISE SPECIFIED:<br>DIMENSIONS ARE IN INCHES<br>SURFACE FINISH:<br>TOLERANCES: .000= +/- 0.005"<br>.00= +/- 0.010" |          | FINISH:<br><br>DEBUR AND BREAK SHARP EDGES |           | Allison Park Group, Inc. (APG)<br>4055 Alpha Drive<br>Allison Park, PA 15101 USA |  | DO NOT SCALE DRAWING  |  | REVISION     |  |
|     |        |      |       | LINEAR:   |          |  |           | Phone +1 (412) 487-8211<br>Fax +1 (412) 486-3157                                 |  | This document is the property of APG and is considered company confidential.<br>The information in this document is the property of APG and may not be used,<br>reproduced, or distributed in whole or in part without the prior written permission of<br>APG |  |              |  |
|     |        |      |       |   | NAME     | SIGNATURE                                  | DATE      | 38S-AD ASSY DIMS<br>(PPT 5200)   |  |   |  |              |  |
|     |        |      |       | DRAWN   | SCHUBERT |  | 8/13/2010 |  |  |   |  |              |  |
|     |        |      |       | CHK'D   |          |  |           |  |  |   |  |              |  |
|     |        |      |       | APPV'D  |          |  |           |  |  |   |  |              |  |
|     |        |      |       | MFG   |          |  |           |  |  |   |  |              |  |
|     |        |      |       | Q.A   |          |  |           | www.apgvision.com  |  | 38S-AD  |  |              |  |
|     |        |      |       | NOTES:<br><br>ALL GASKETS 40D SILICONE  |          |  |           | MATERIAL:<br><br>316 STAINLESS STEEL BODY<br>6061 T6 ALUMINUM BASE               |  |   |  |              |  |
| NO. | CHANGE | DATE | INIT. |   |          |  |           | WEIGHT:  |  | SCALE:1:5   |  | SHEET 1 OF 1 |  |
| A3  |        |      |       |   |          |  |           |  |  |   |  |              |  |

4

3

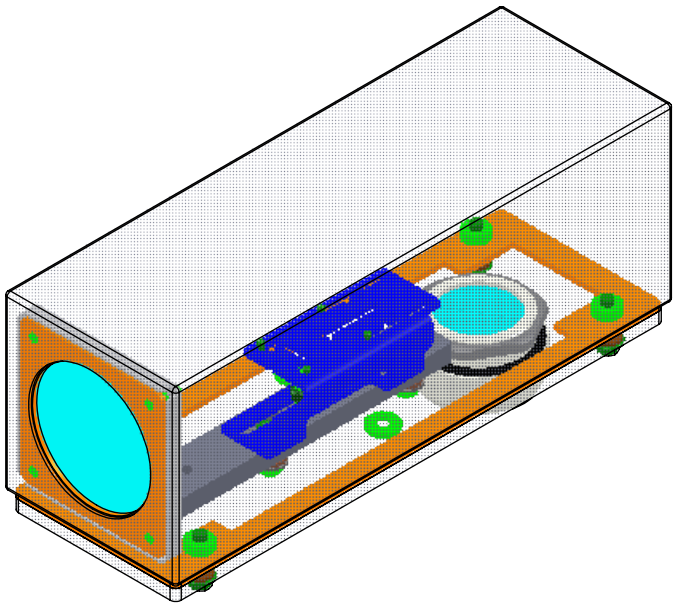
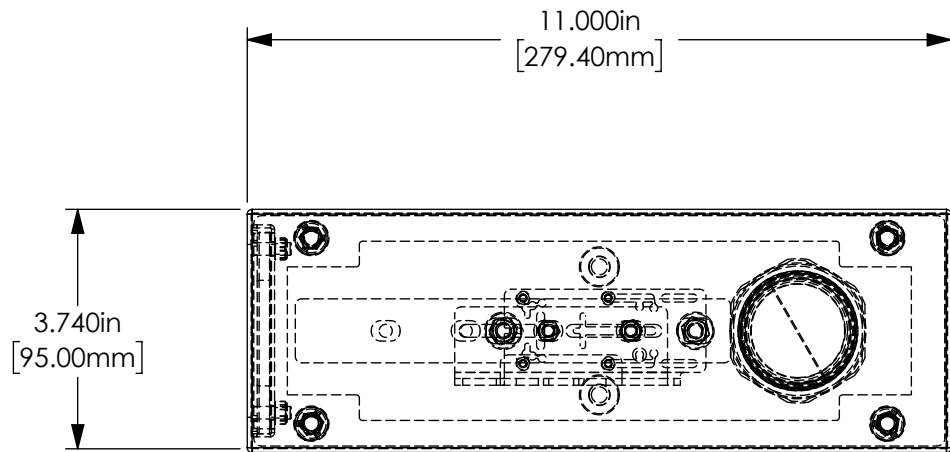
2

1

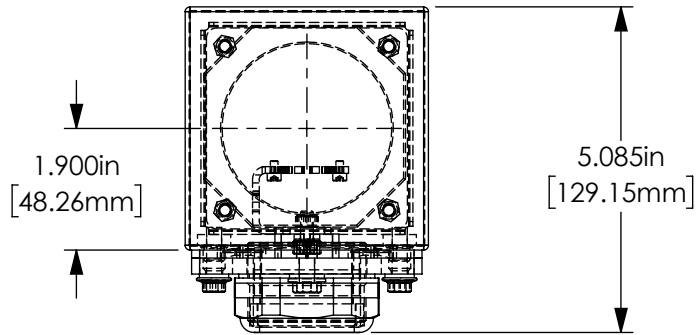
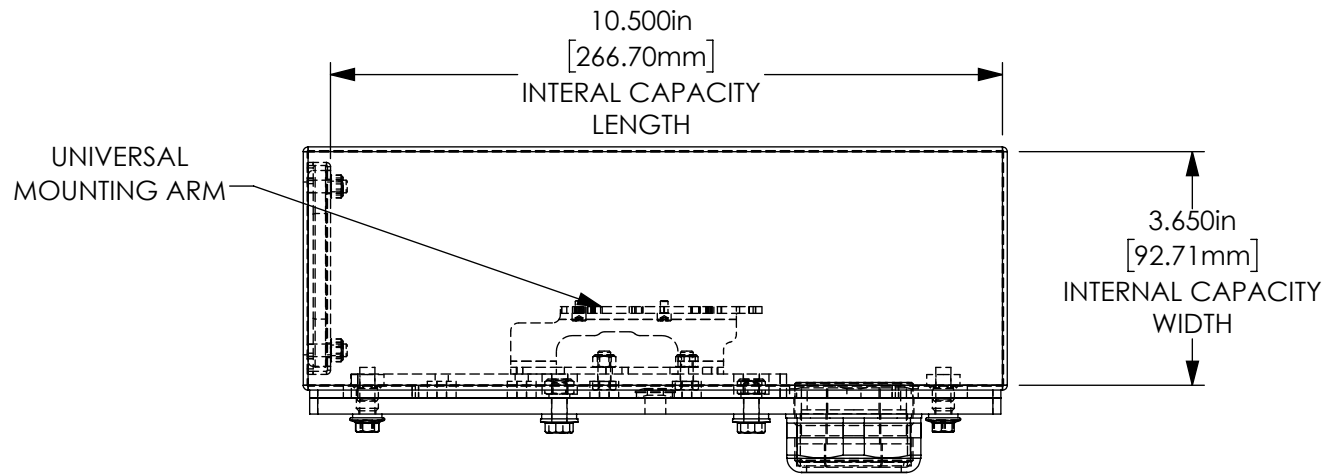
REVISIONS

| ZONE | REV. | DESCRIPTION | DATE | APPROVED |
|------|------|-------------|------|----------|
|------|------|-------------|------|----------|

B

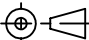


B



A

A

| TOLERANCES UNLESS OTHERWISE SPECIFIED   |         |                             |        |
|---|---------|-----------------------------|--------|
| MACHINING   |         | SHEET METAL                 |        |
| X.X   | 0.0250" | HOLE TO HOLE (SAME SURFACE) |        |
| X.XX  | 0.0100" | X.X                         | 0.030" |
| X.XXX   | 0.0050" | X.XX                        | 0.010" |
| X.XXXX  | 0.0005" | X.XXX                       | 0.005" |
| ANGULAR   | 0.5°    | HOLE TO FOLDED EDGE         |        |
| DEBURR ALL  |         | X.X                         | 0.035" |
|   |         | X.XX                        | 0.025" |
|   |         | X.XXX                       | 0.015" |
|   |         | FOLD TO FOLD                |        |
|   |         | X.X                         | 0.045" |
|   |         | X.XX                        | 0.035" |
|   |         | X.XXX                       | 0.020" |
|   |         | ANGULAR 1.0°                |        |
|    |         |                             |        |
| ALL WEIGHTS<br>ARE IN POUNDS  |         |                             |        |
| THIS PRINT IS THE PROPERTY OF ALLISON PARK GROUP. THE INFORMATION<br>CONTAINED HEREIN IS CONFIDENTIAL. IT IS NOT TRANSFERABLE. IT IS FURNISHED<br>WITH THE CLEAR UNDERSTANDING THAT IT IS NOT TO BE TRACED, REPRODUCED OR<br>USED IN ANY PROCESS OF MANUFACTURING WITHOUT WRITTEN PERMISSION FROM<br>THE OWNER AND IS RETURNABLE UPON DEMAND. ANY INFRINGEMENT UPON THE<br>PATENT RIGHTS SHOWN HEREIN, WHETHER IN PART OR WHOLE, WILL BE<br>PROSECUTED. |         |                             |        |
| AS PART OF OUR POLICY OF CONTINUING DEVELOPMENT, ALLISON<br>PARK GROUP RESERVES THE RIGHT TO ALTER SPECIFICATIONS<br>WITHOUT PRIOR NOTICE.  |         |                             |        |



Allison Park Group, Inc (APG)  
4055 Alpha Drive  
Allison Park, PA 15101 USA  
Phone +1 (412) 487-8211  
apgvision.com

|                  |           |              |           |                |          |
|------------------|-----------|--------------|-----------|----------------|----------|
| DESCRIPTION:     |           |              |           |                |          |
| 30S-AH ENCLOSURE |           |              |           |                |          |
| MATERIAL:        |           |              |           |                |          |
| SEE BOM          |           |              |           |                |          |
| FINISH: SEE BOM  |           |              |           |                |          |
| DRAWN BY:        | DATE:     | SCALE:       | SHT-SIZE: | APPROX. WEIGHT |          |
| Kennedy          | 7/24/2019 | 1:4          | B         |                |          |
| CHECKED BY:      | DATE:     | PART NUMBER: |           |                | REVISION |
|                  |           | 38S-AH       |           |                | A        |
| Sheet 1 of 1     |           |              |           |                |          |

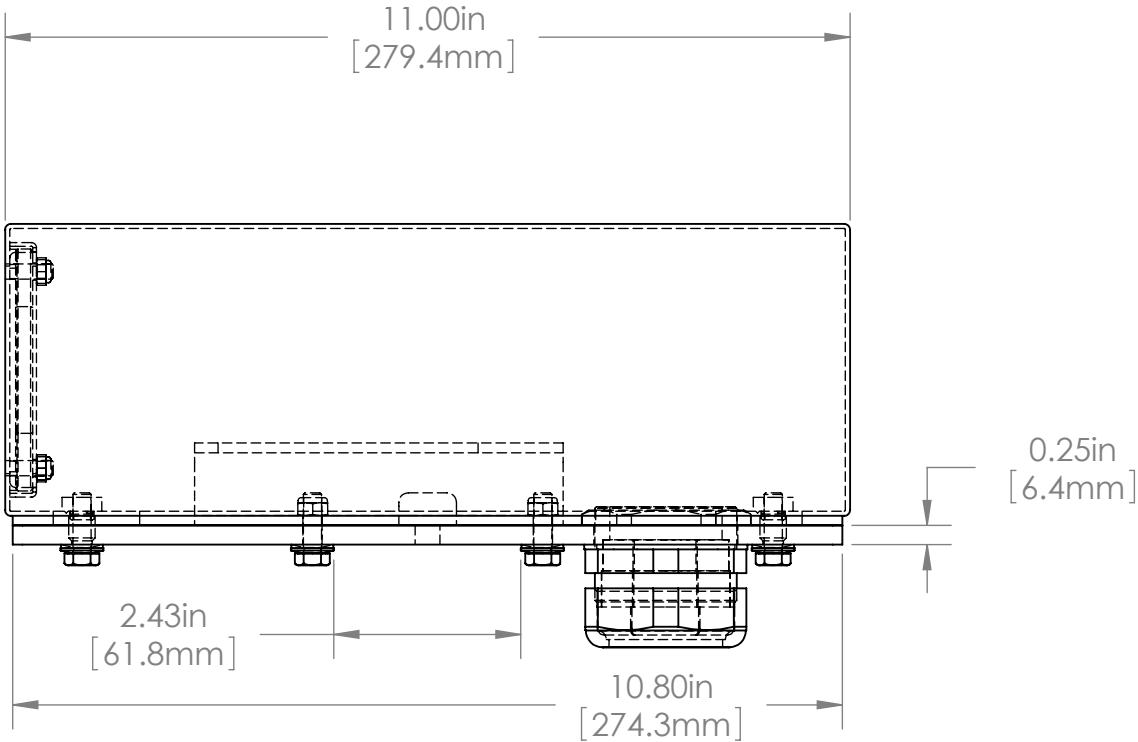
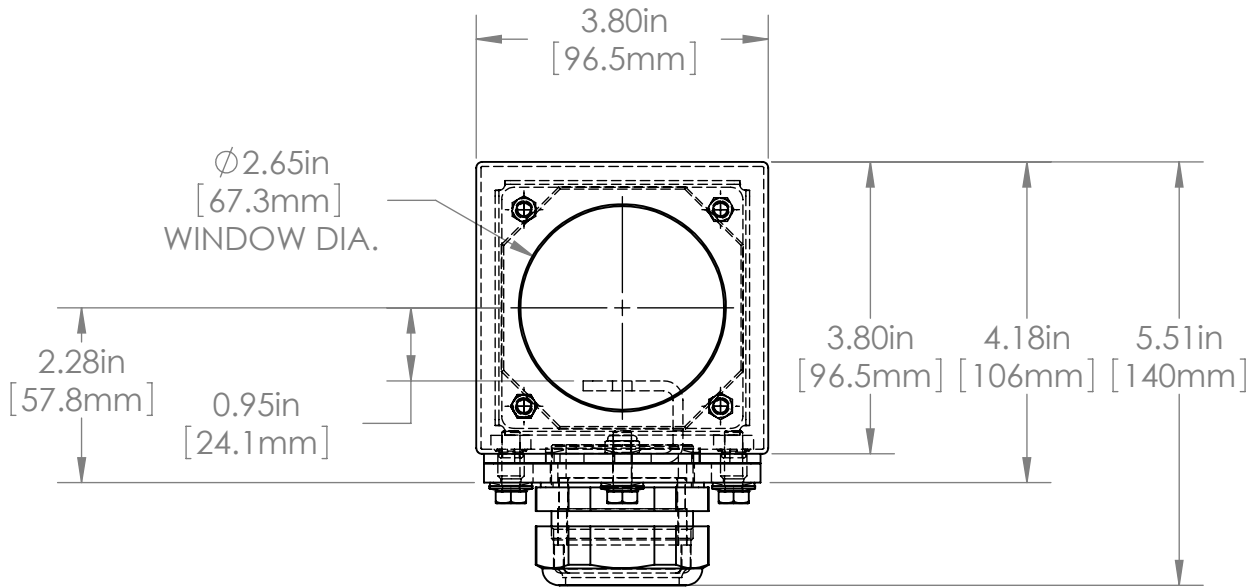
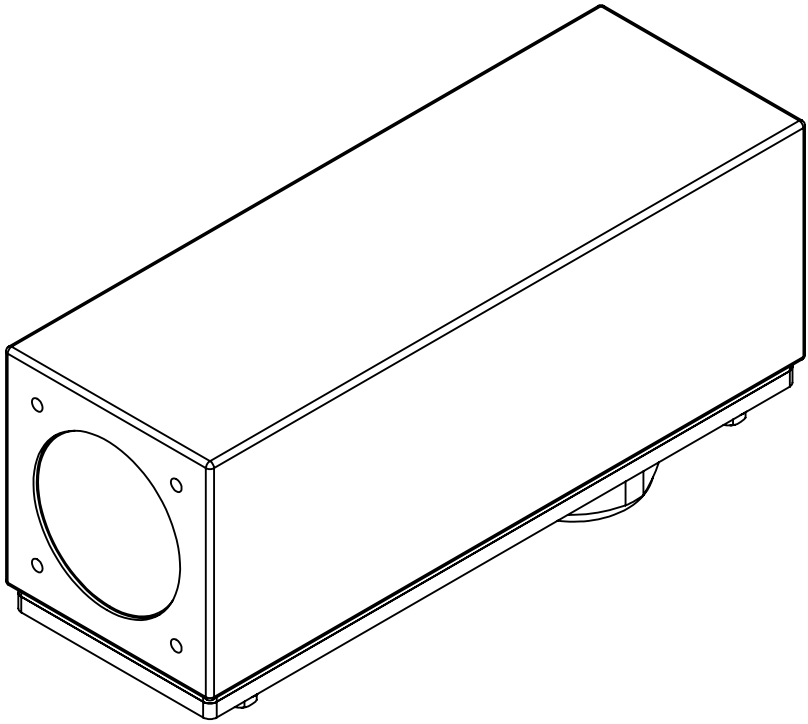
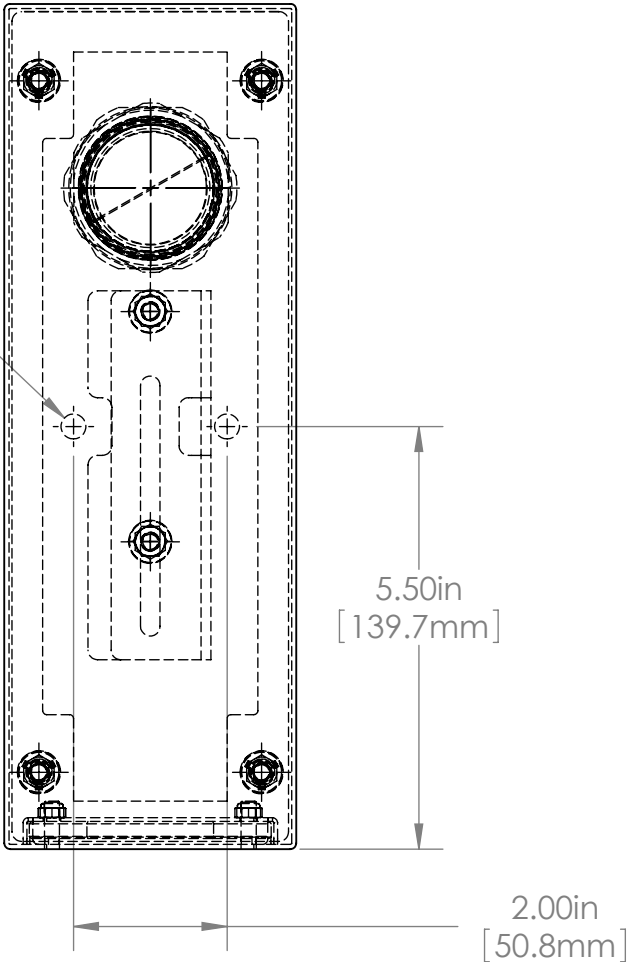
4

3

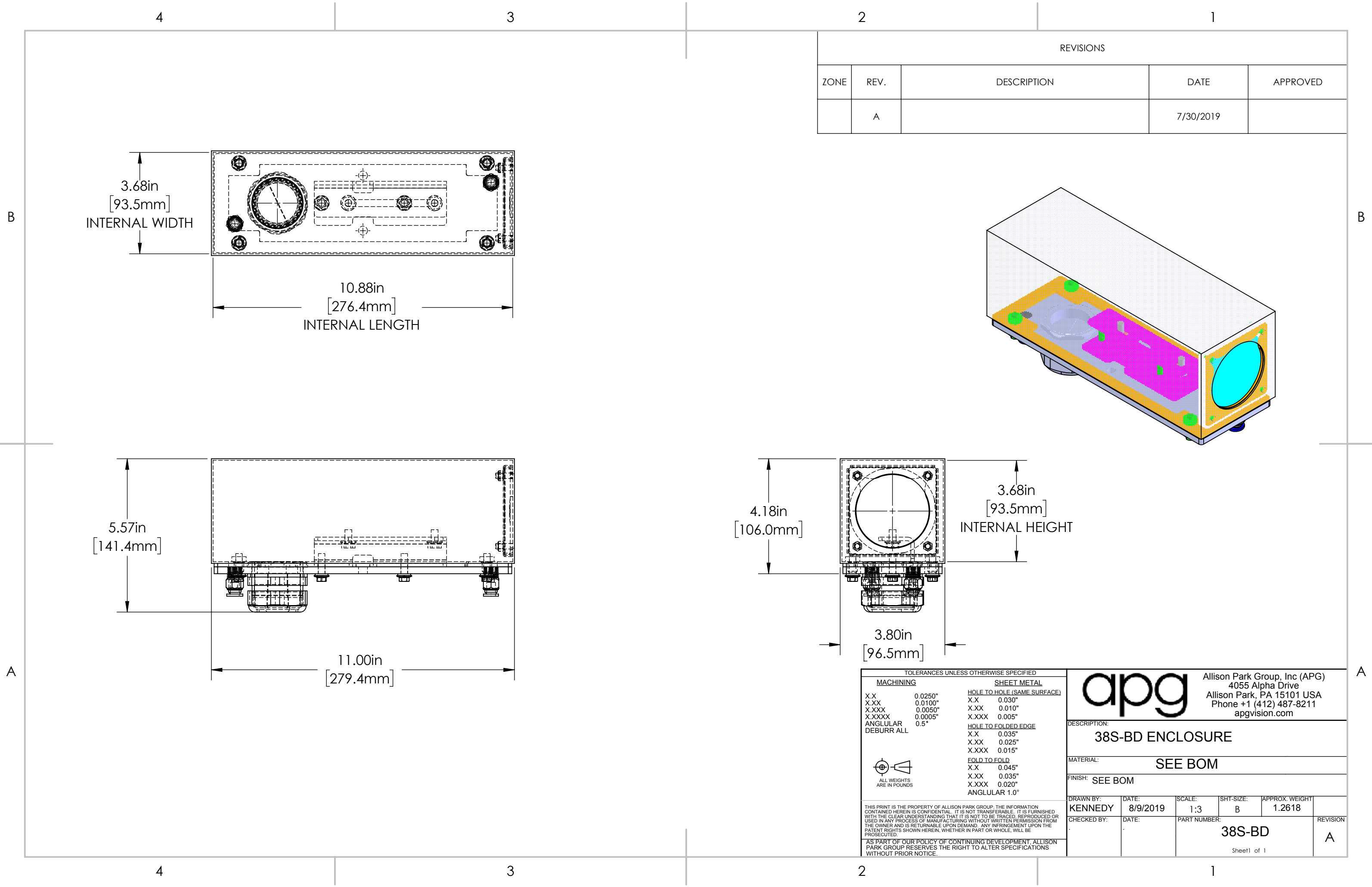
2

1

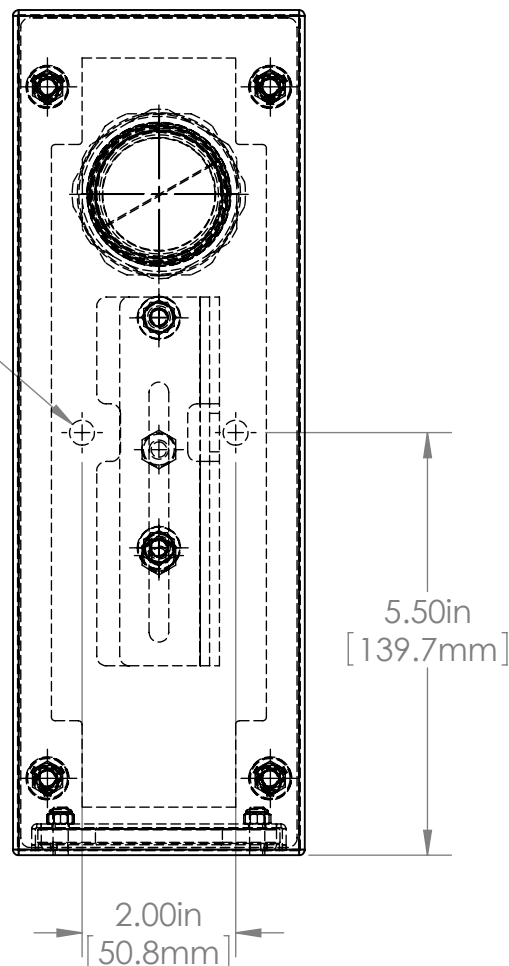
Ø0.33in  
[8.3mm]  
MOUNTING HOLES



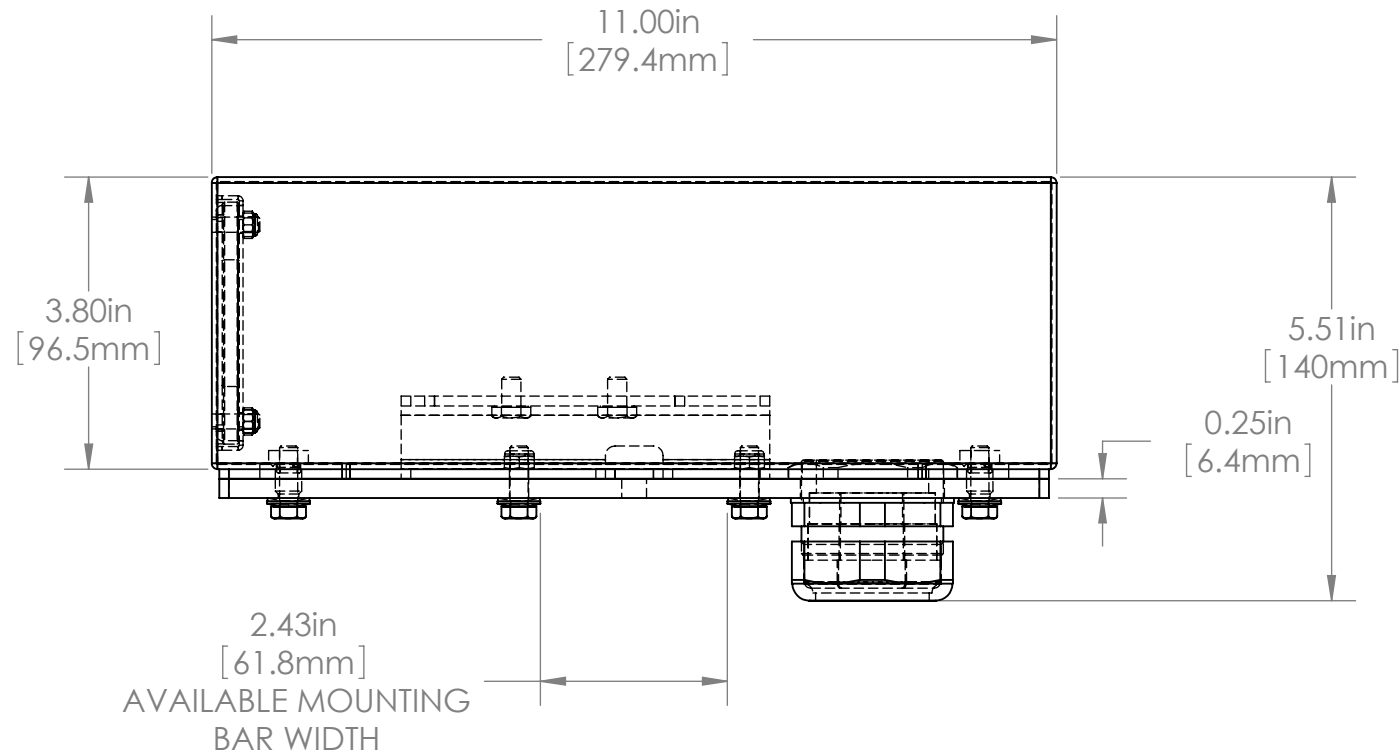
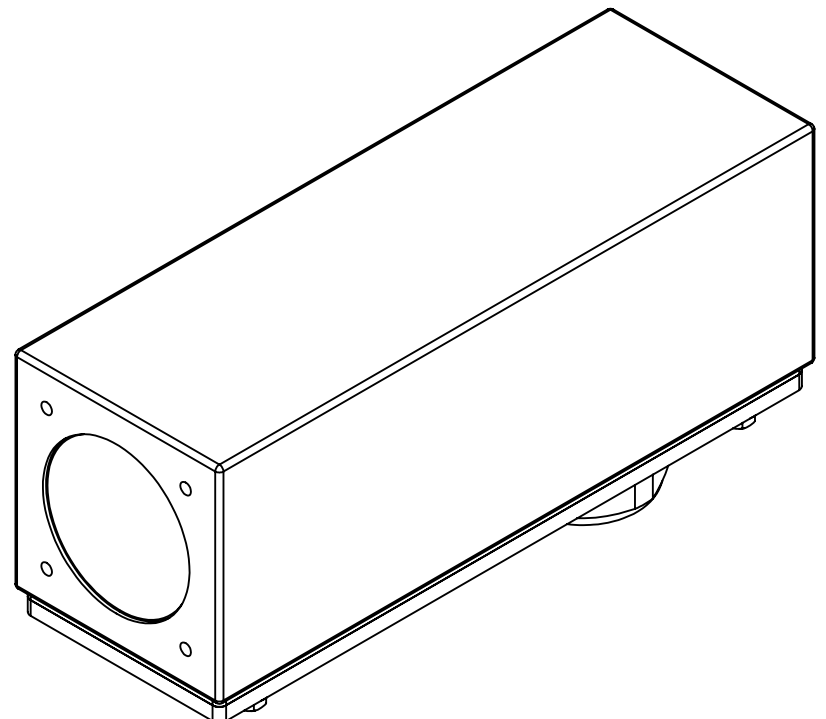
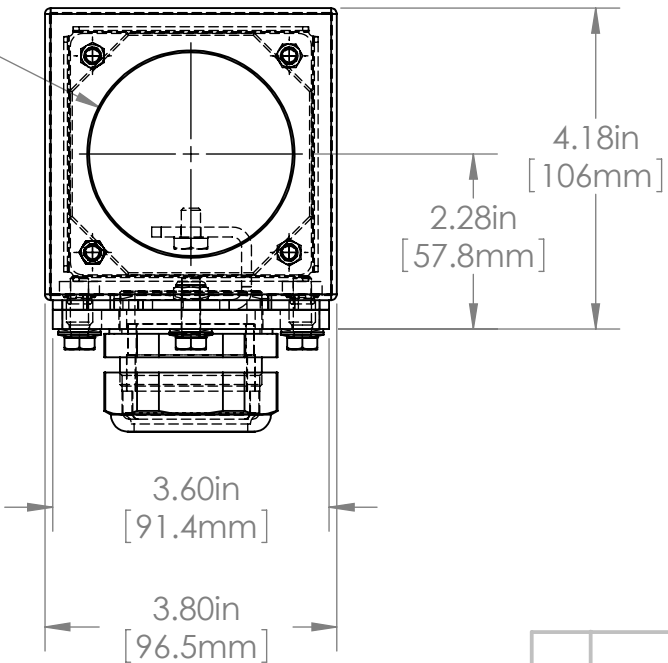
|     |        |      |       |   |          |                             |           |  |  |  |  |              |  |
|-----|--------|------|-------|---|----------|-----------------------------|-----------|--|--|--|--|--------------|--|
|     |        |      |       | UNLESS OTHERWISE SPECIFIED:<br>DIMENSIONS ARE IN INCHES<br>SURFACE FINISH:<br>TOLERANCES: .000= +/- 0.005"<br>.00= +/- 0.010" |          | FINISH:                     |           | Allison Park Group, Inc. (APG)<br>4055 Alpha Drive<br>Allison Park, PA 15101 USA |  | DO NOT SCALE DRAWING   |  | REVISION     |  |
|     |        |      |       | LINEAR:   |          | DEBUR AND BREAK SHARP EDGES |           | Phone +1 (412) 487-8211<br>Fax +1 (412) 486-3157<br><br>www.apgvision.com        |  | This document is the property of APG and is considered company confidential.<br>The information in this document is the property of APG and may not be used,<br>reproduced, or distributed in whole or in part without the prior written permission of APG |  |              |  |
|     |        |      |       |   | NAME     | SIGNATURE                   | DATE      | TITLE:<br><br>WASHDOWN ENCLOSURE<br>WITH PPT T SERIES                            |  |  |  |              |  |
|     |        |      |       | DRAWN   | SCHUBERT |                             | 7/16/2010 |  |  |  |  |              |  |
|     |        |      |       | CHK'D   |          |                             |           |  |  |  |  |              |  |
|     |        |      |       | APPV'D  |          |                             |           |  |  |  |  |              |  |
|     |        |      |       | MFG   |          |                             |           |  |  |  |  |              |  |
|     |        |      |       | Q.A   |          |                             |           | MATERIAL:<br><br>316 Stainless Steel   |  | DWG NO.  |  | 38S-BB       |  |
|     |        |      |       | NOTES:  |          |                             |           | WEIGHT:  |  | SCALE:1:5  |  | SHEET 1 OF 1 |  |
| NO. | CHANGE | DATE | INIT. |   |          |                             |           |  |  |  |  | A3           |  |



Ø0.33in  
[8.3mm]  
MOUNTING HOLES

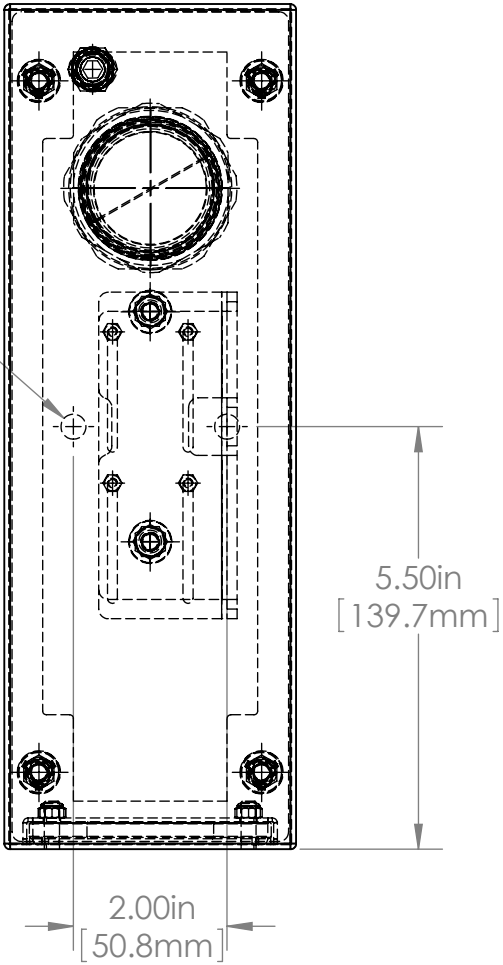


Ø2.65in  
[67.3mm]  
VIEWPORT

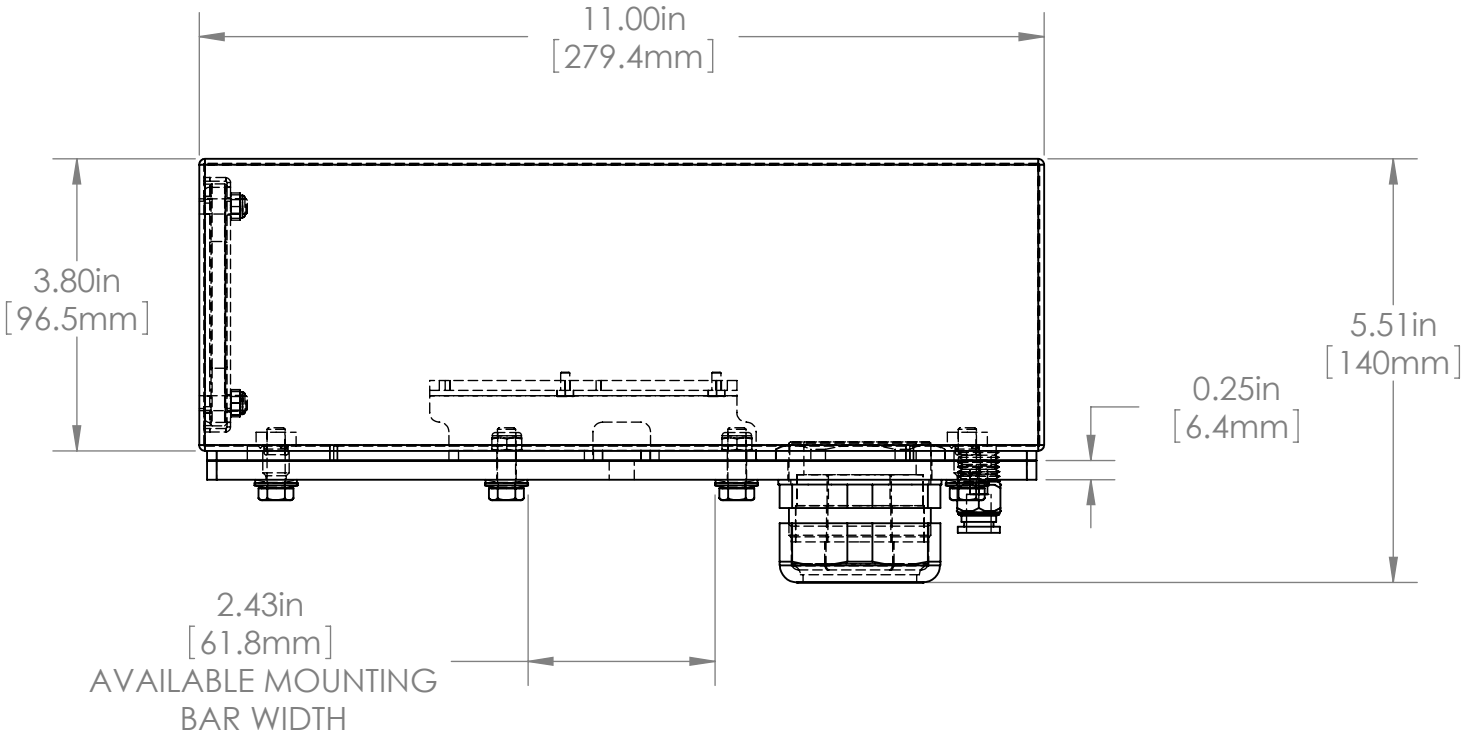
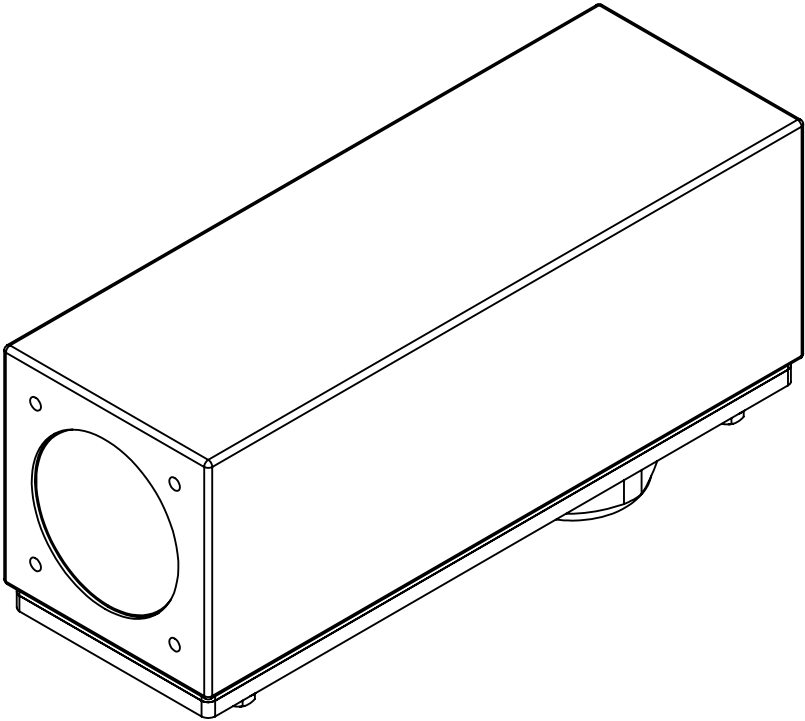
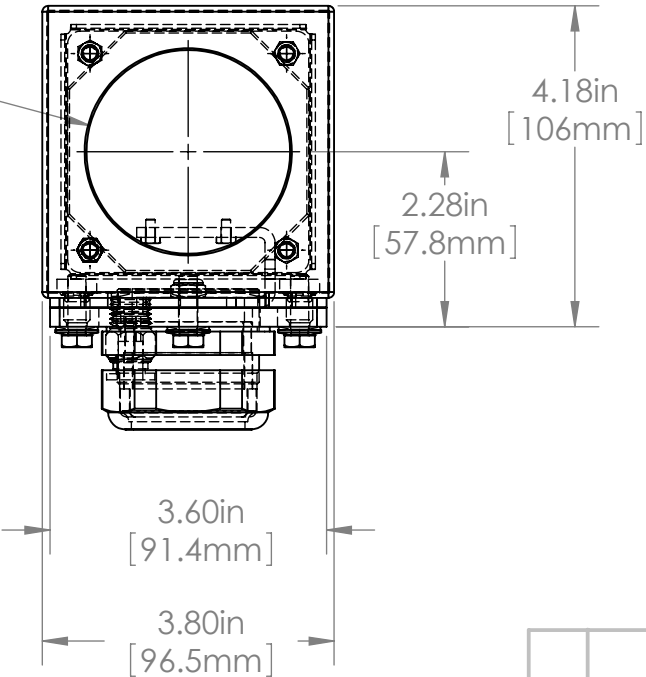


|     |  |        |  |   |  |                             |  |  |  |  |  |              |  |           |  |
|-----|--|--------|--|---|--|-----------------------------|--|--|--|--|--|--------------|--|-----------|--|
|     |  |        |  | UNLESS OTHERWISE SPECIFIED:<br>DIMENSIONS ARE IN INCHES<br>SURFACE FINISH:<br>TOLERANCES: .000= +/- 0.005"<br>.00= +/- 0.010" |  | FINISH:                     |  | Allison Park Group, Inc. (APG)<br>4055 Alpha Drive<br>Allison Park, PA 15101 USA |  | DO NOT SCALE DRAWING   |  | REVISION     |  |           |  |
|     |  |        |  | LINEAR:   |  | DEBUR AND BREAK SHARP EDGES |  | Phone +1 (412) 487-8211<br>Fax +1 (412) 486-3157<br><br>www.apgvision.com        |  | This document is the property of APG and is considered company confidential.<br>The information in this document is the property of APG and may not be used,<br>reproduced, or distributed in whole or in part without the prior written permission of APG<br><br><div>TITLE:</div> <div>38S-BE ASSY DIMS (SAPL)</div> |  |              |  |           |  |
|     |  |        |  |   |  | NAME                        |  | SIGNATURE  |  |  |  |              |  | DATE      |  |
|     |  |        |  | DRAWN   |  | SCHUBERT                    |  |  |  |  |  |              |  | 8/13/2010 |  |
|     |  |        |  | CHK'D   |  |                             |  |  |  |  |  |              |  |           |  |
|     |  |        |  | APPV'D  |  |                             |  |  |  |  |  |              |  |           |  |
|     |  |        |  | MFG   |  |                             |  |  |  |  |  |              |  |           |  |
|     |  |        |  | Q.A   |  |                             |  |  |  |  |  |              |  |           |  |
|     |  |        |  | NOTES:  |  | ALL GASKETS 40D SILICONE    |  | MATERIAL:  |  | 316 STAINLESS STEEL BODY<br>6061 T6 ALUMINUM BASE  |  |              |  |           |  |
|     |  |        |  | WEIGHT:   |  |                             |  |  |  |  |  |              |  |           |  |
| NO. |  | CHANGE |  | DATE  |  | INIT.                       |  |  |  | SCALE:1:5  |  | SHEET 1 OF 1 |  |           |  |

Ø0.33in  
[8.3mm]  
MOUNTING HOLES

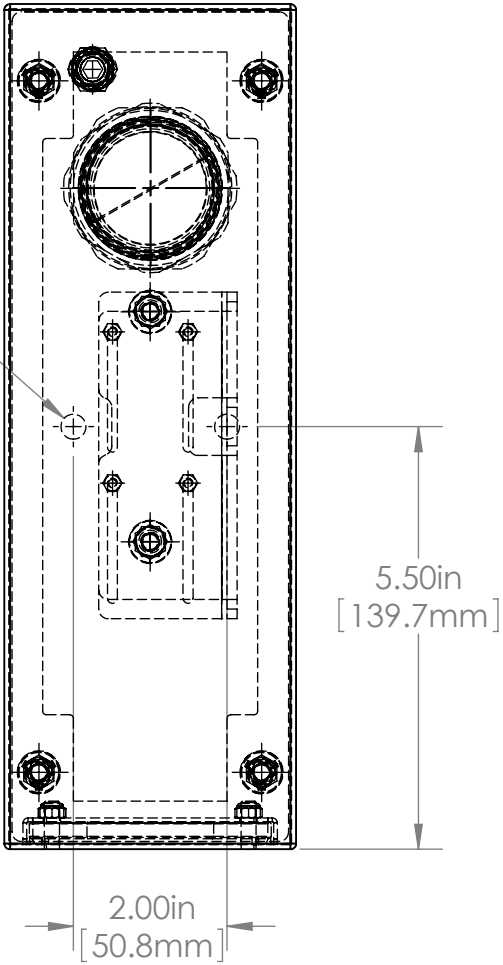


Ø2.65in  
[67.3mm]  
VIEWPORT

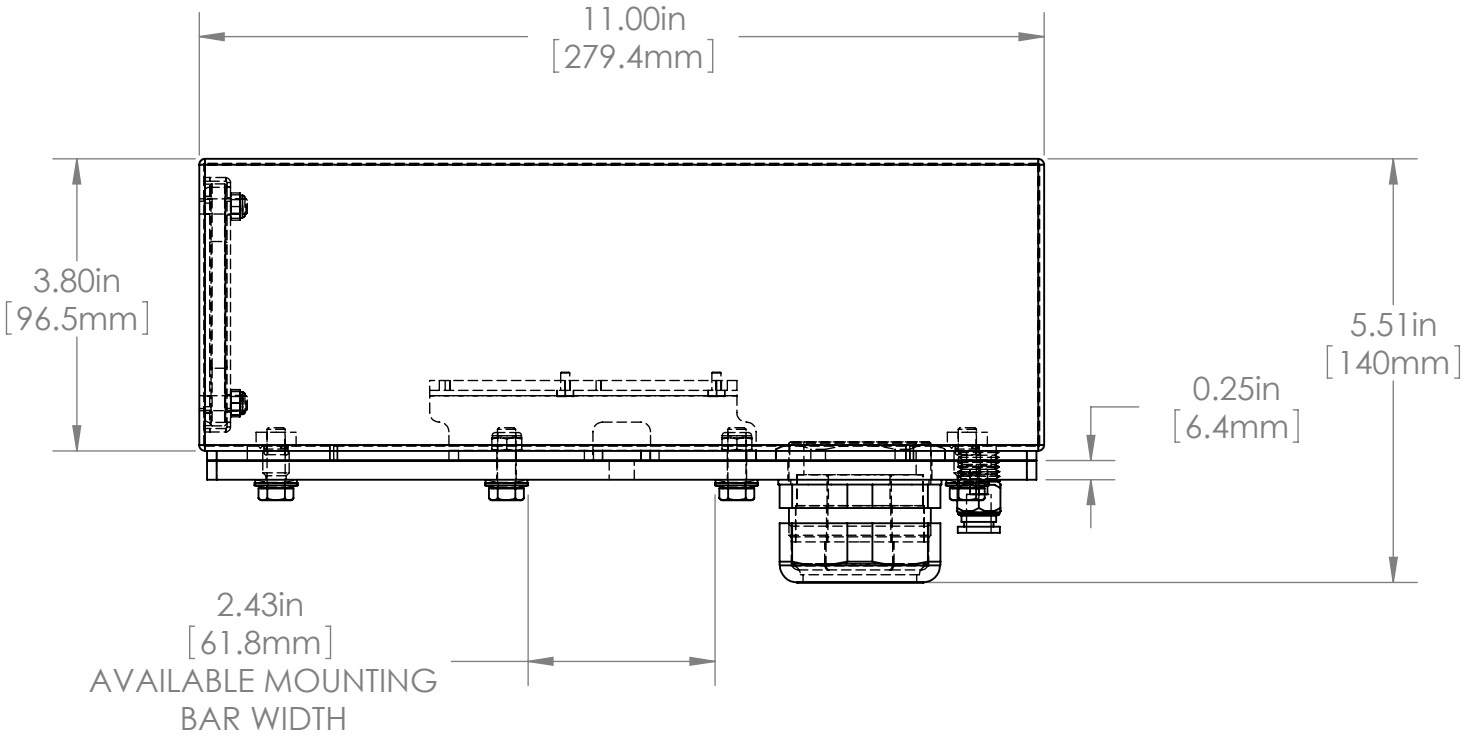
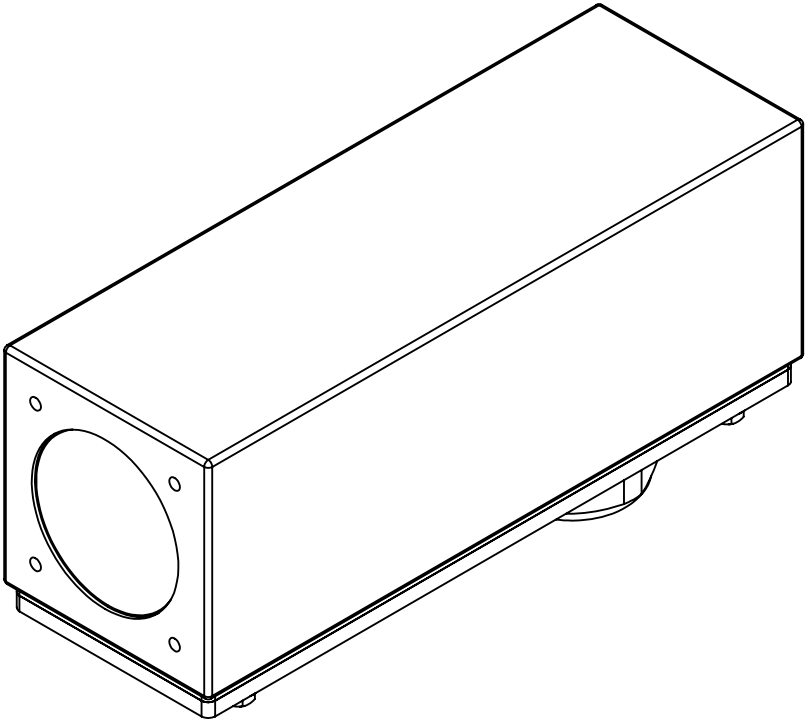
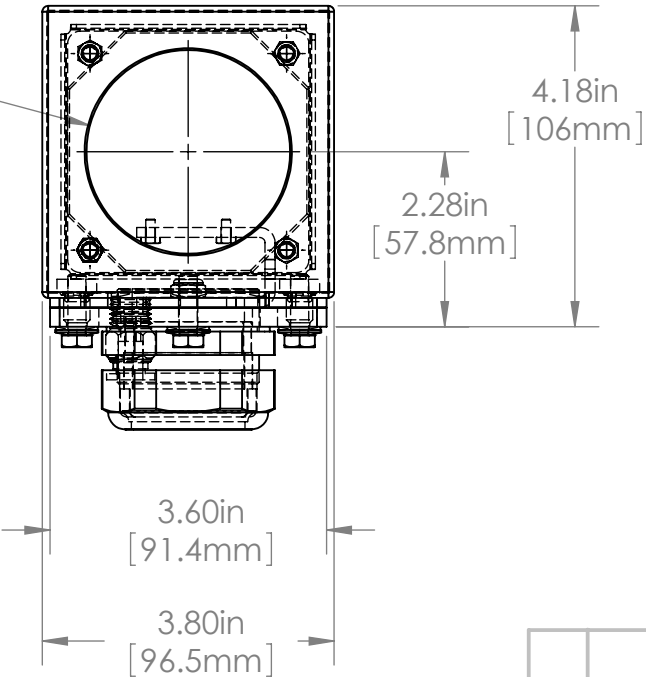


|     |        |      |       |   |          |  |           |  |  |  |  |              |  |
|-----|--------|------|-------|---|----------|--|-----------|--|--|--|--|--------------|--|
|     |        |      |       | UNLESS OTHERWISE SPECIFIED:<br>DIMENSIONS ARE IN INCHES<br>SURFACE FINISH:<br>TOLERANCES: .000= +/- 0.005"<br>.00= +/- 0.010" |          | FINISH:<br><br>DEBUR AND BREAK SHARP EDGES |           | Allison Park Group, Inc. (APG)<br>4055 Alpha Drive<br>Allison Park, PA 15101 USA |  | DO NOT SCALE DRAWING   |  | REVISION     |  |
|     |        |      |       | LINEAR:   |          |  |           | Phone +1 (412) 487-8211<br>Fax +1 (412) 486-3157                                 |  | This document is the property of APG and is considered company confidential.<br>The information in this document is the property of APG and may not be used,<br>reproduced, or distributed in whole or in part without the prior written permission of APG |  |              |  |
|     |        |      |       |   | NAME     | SIGNATURE                                  | DATE      | www.apgvision.com  |  | TITLE:<br><br>38S-BG ASSY DIMS<br>(IVP RANGER)   |  |              |  |
|     |        |      |       | DRAWN   | SCHUBERT |  | 8/13/2010 |  |  |  |  |              |  |
|     |        |      |       | CHK'D   |          |  |           |  |  |  |  |              |  |
|     |        |      |       | APPV'D  |          |  |           |  |  |  |  |              |  |
|     |        |      |       | MFG   |          |  |           |  |  |  |  |              |  |
|     |        |      |       | Q.A   |          |  |           | MATERIAL:  |  | DWG NO.  |  | A3           |  |
|     |        |      |       | NOTES:<br><br>ALL GASKETS 40D SILICONE  |          |  |           | 316 STAINLESS STEEL BODY<br>6061 T6 ALUMINUM BASE                                |  | 38S-BG   |  |              |  |
| NO. | CHANGE | DATE | INIT. |   |          |  |           | WEIGHT:  |  | SCALE:1:5  |  | SHEET 1 OF 1 |  |

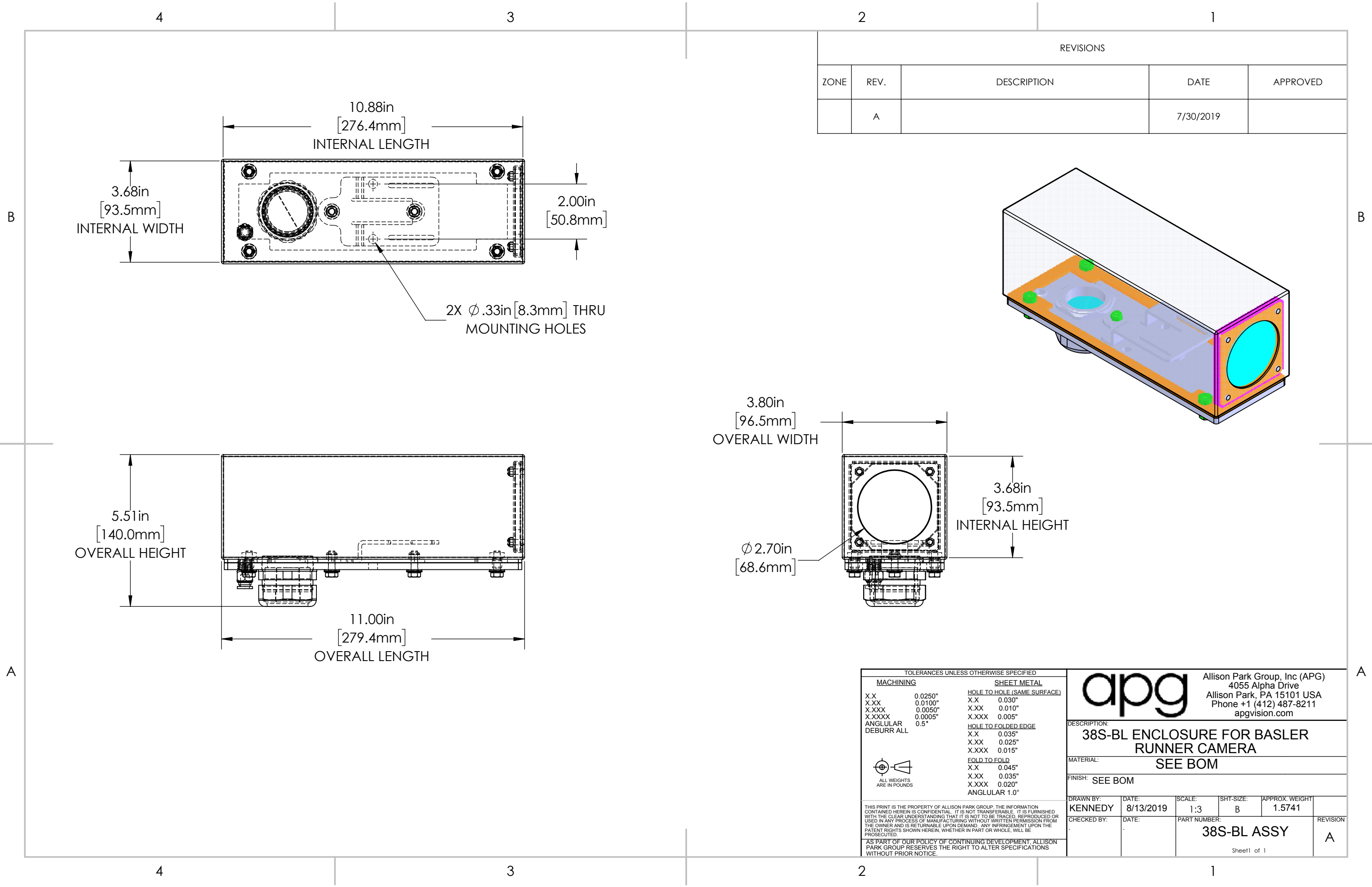
Ø0.33in  
[8.3mm]  
MOUNTING HOLES



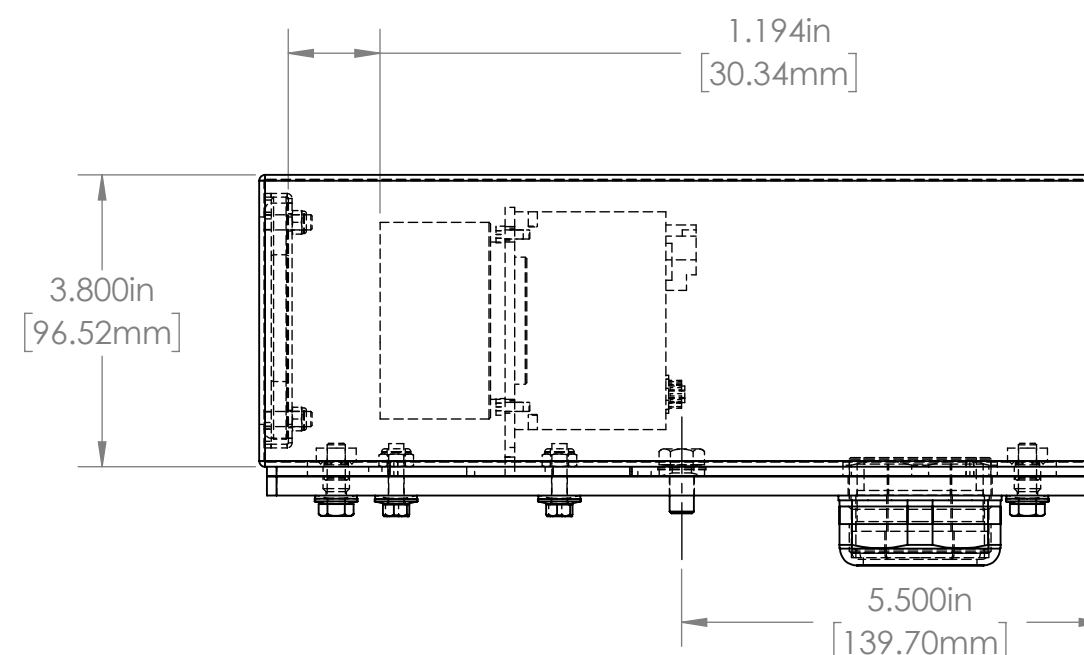
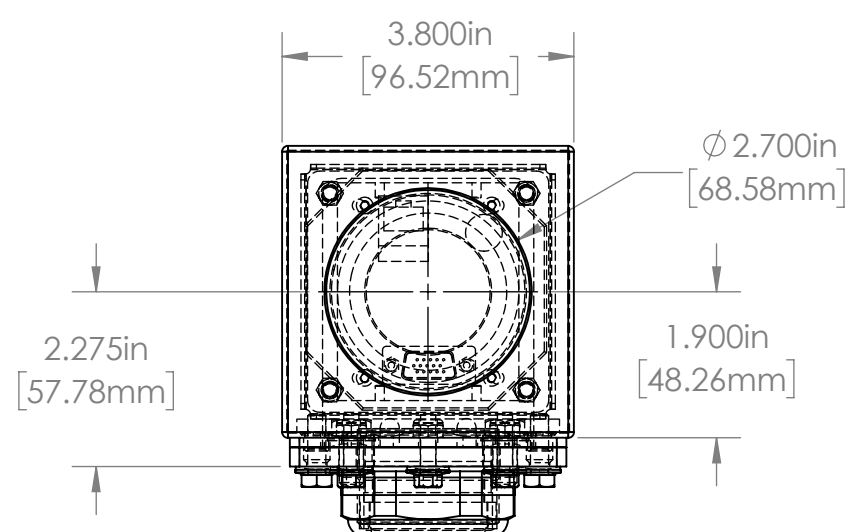
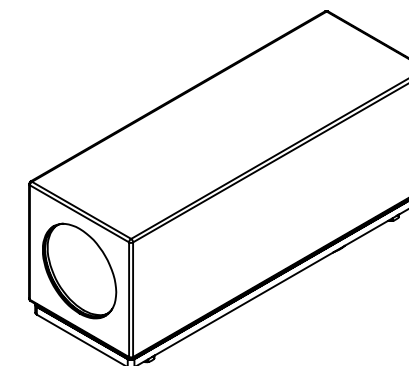
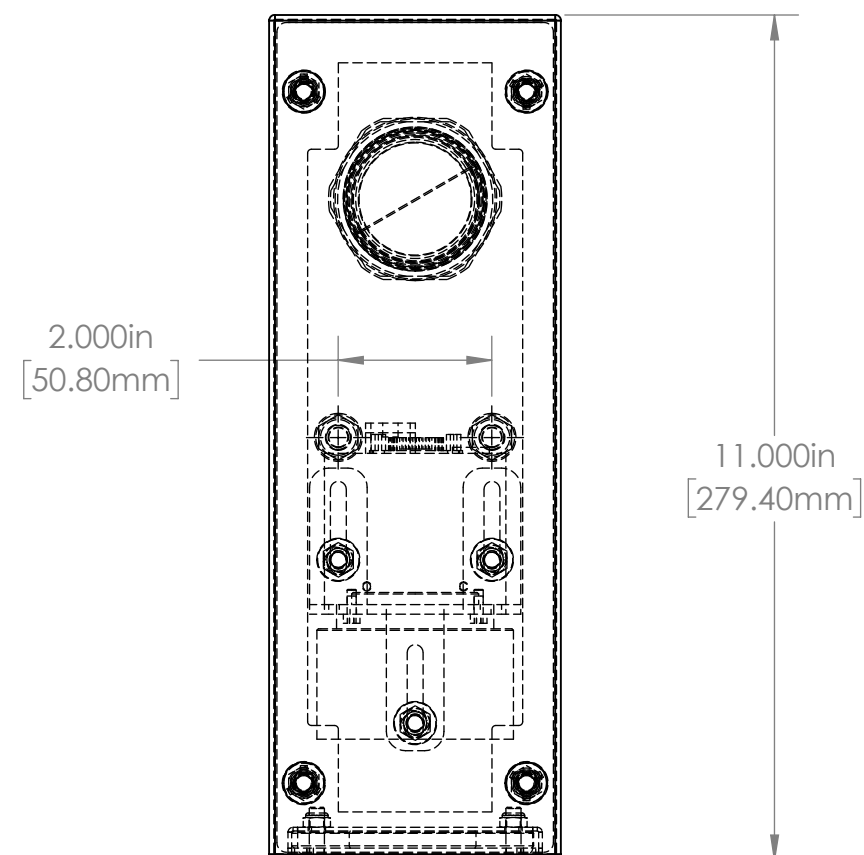
Ø2.65in  
[67.3mm]  
VIEWPORT



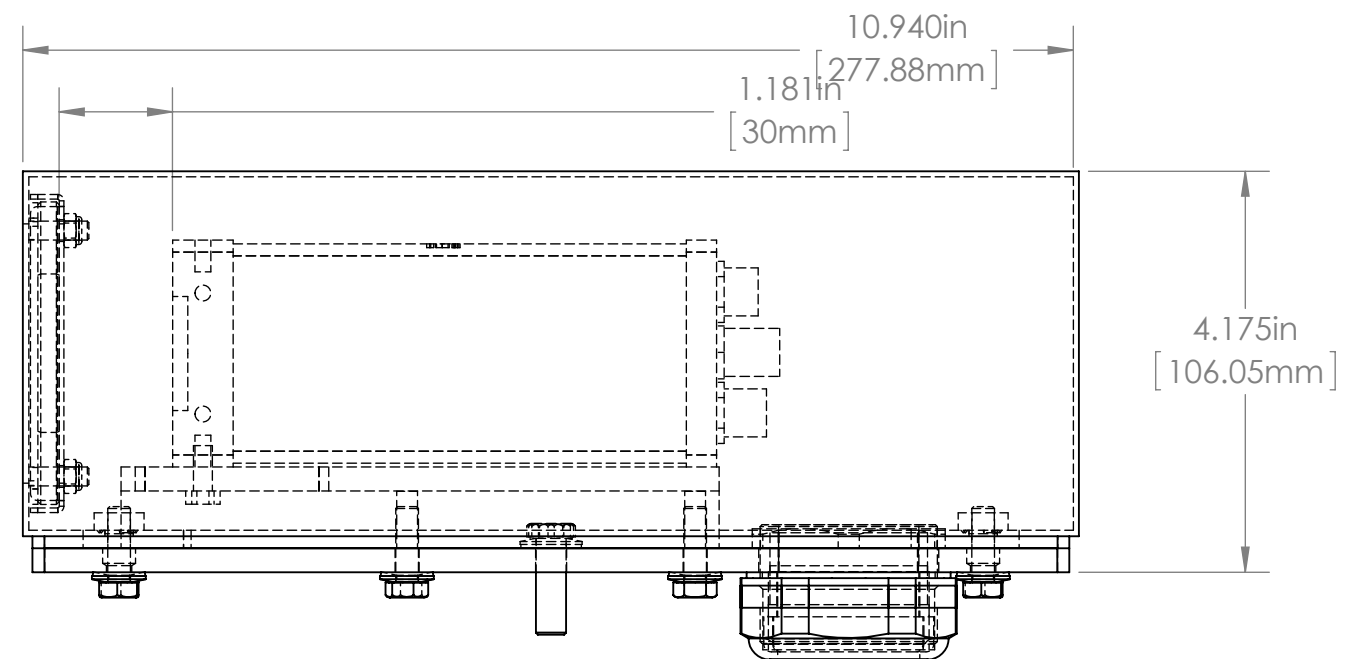
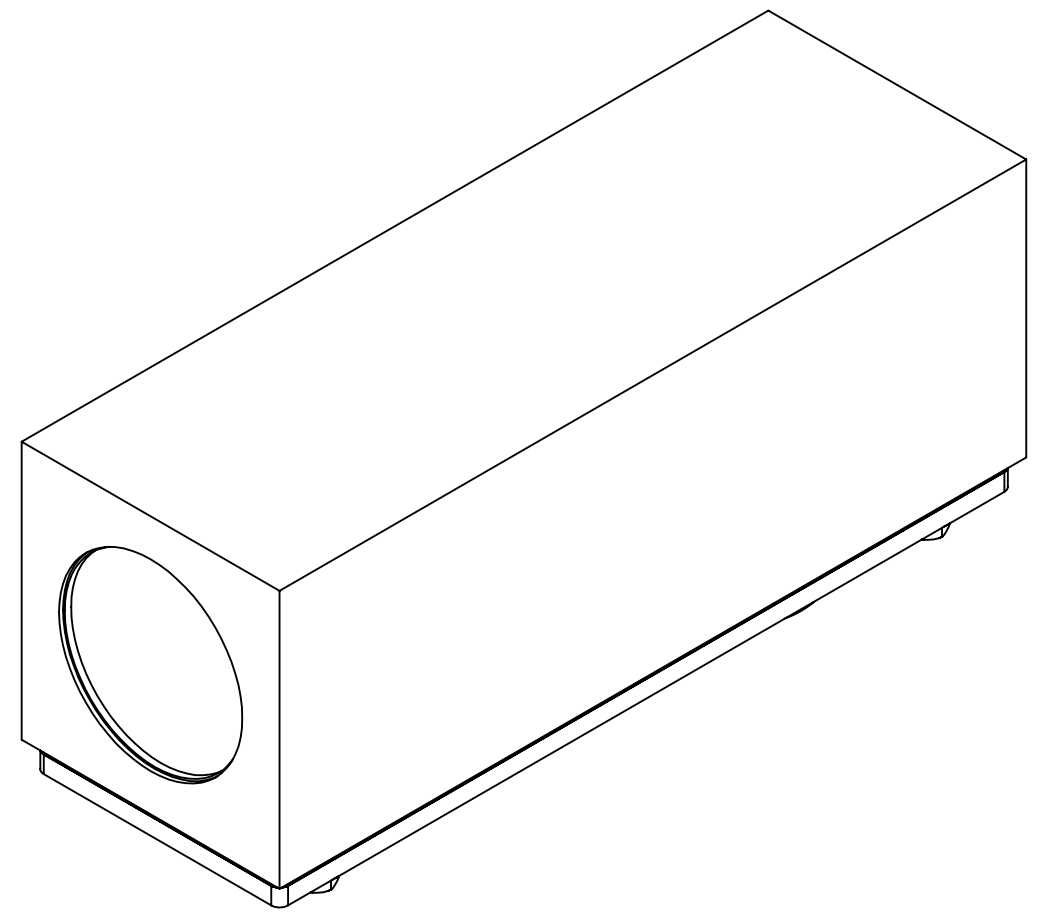
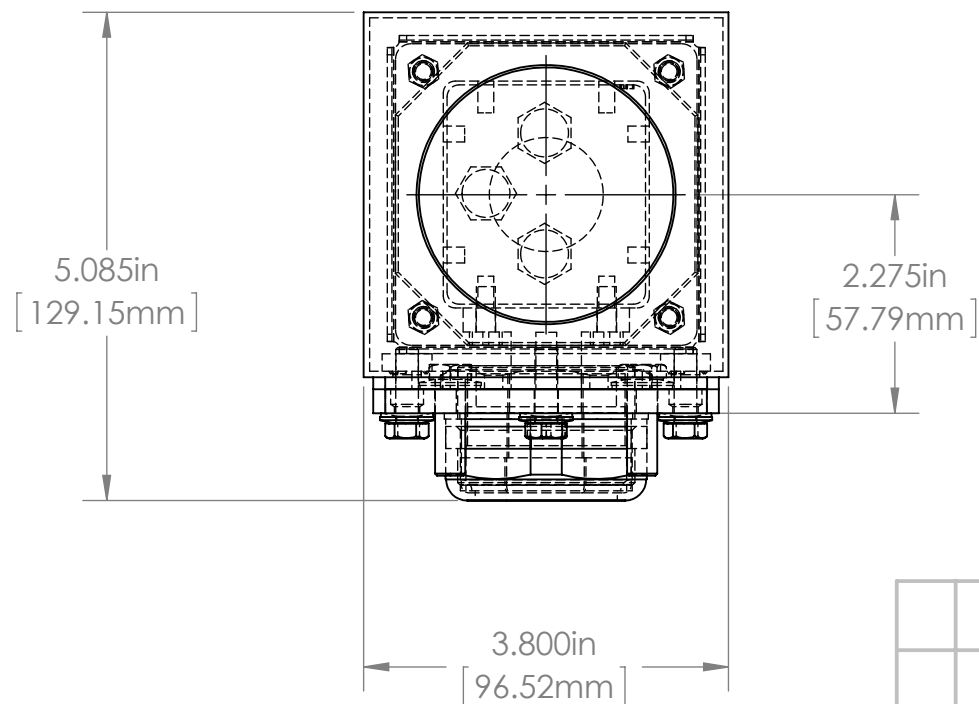
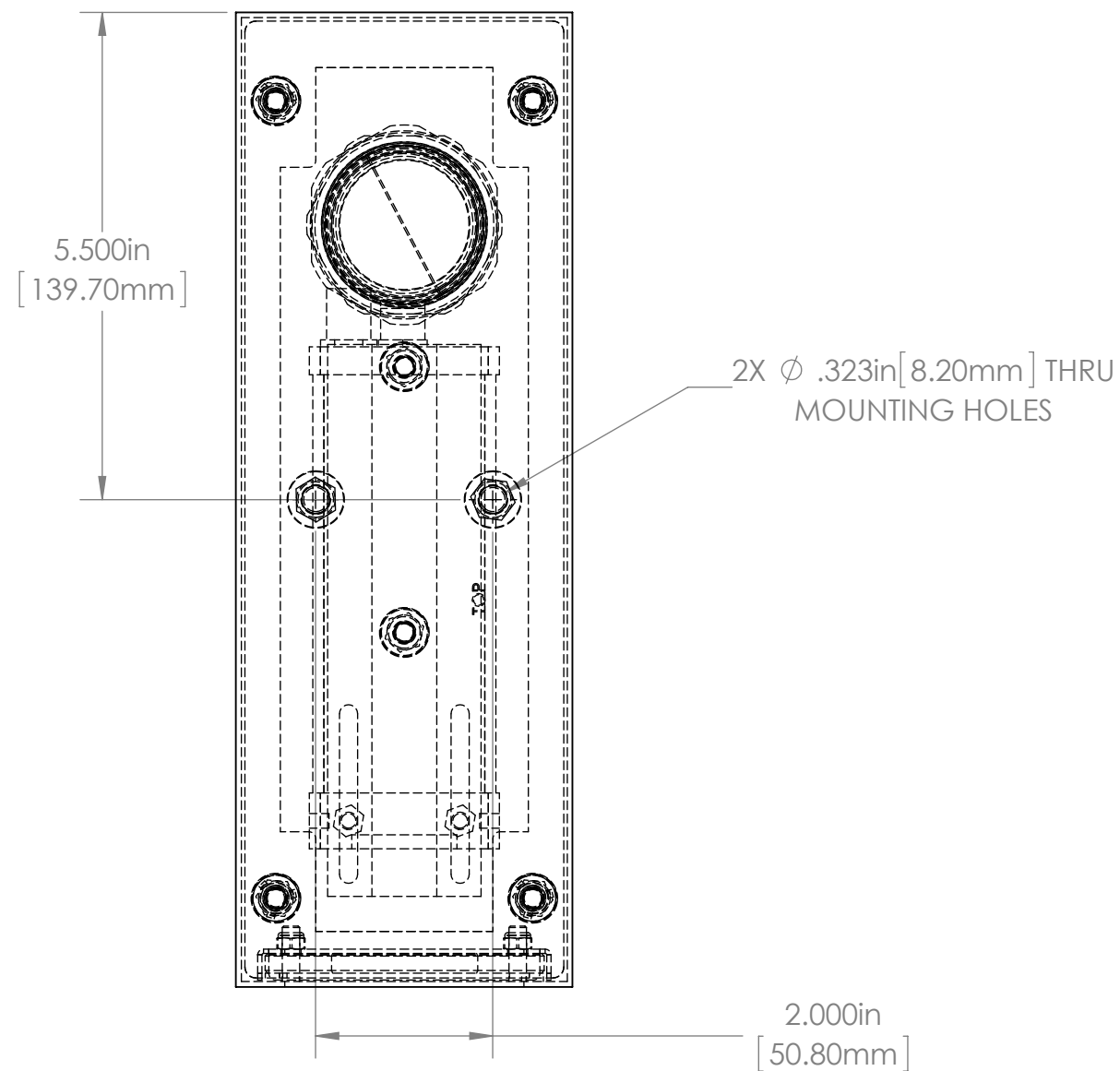
|     |        |      |       |   |          |  |           |  |  |  |  |              |  |
|-----|--------|------|-------|---|----------|--|-----------|--|--|--|--|--------------|--|
|     |        |      |       | UNLESS OTHERWISE SPECIFIED:<br>DIMENSIONS ARE IN INCHES<br>SURFACE FINISH:<br>TOLERANCES: .000= +/- 0.005"<br>.00= +/- 0.010" |          | FINISH:<br><br>DEBUR AND BREAK SHARP EDGES |           | Allison Park Group, Inc. (APG)<br>4055 Alpha Drive<br>Allison Park, PA 15101 USA |  | DO NOT SCALE DRAWING   |  | REVISION     |  |
|     |        |      |       | LINEAR:   |          |  |           | Phone +1 (412) 487-8211<br>Fax +1 (412) 486-3157                                 |  | This document is the property of APG and is considered company confidential.<br>The information in this document is the property of APG and may not be used,<br>reproduced, or distributed in whole or in part without the prior written permission of APG |  |              |  |
|     |        |      |       |   | NAME     | SIGNATURE                                  | DATE      | www.apgvision.com  |  | TITLE:<br><br>38S-BG ASSY DIMS<br>(IVP RANGER)   |  |              |  |
|     |        |      |       | DRAWN   | SCHUBERT |  | 8/13/2010 |  |  |  |  |              |  |
|     |        |      |       | CHK'D   |          |  |           |  |  |  |  |              |  |
|     |        |      |       | APPV'D  |          |  |           |  |  |  |  |              |  |
|     |        |      |       | MFG   |          |  |           |  |  | DWG NO. 38S-BG   |  |              |  |
|     |        |      |       | Q.A   |          |  |           |  |  |  |  |              |  |
|     |        |      |       | NOTES:<br><br>ALL GASKETS 40D SILICONE  |          |  |           | MATERIAL:<br><br>316 STAINLESS STEEL BODY<br>6061 T6 ALUMINUM BASE               |  |  |  |              |  |
| NO. | CHANGE | DATE | INIT. |   |          |  |           | WEIGHT:  |  | SCALE:1:5  |  | SHEET 1 OF 1 |  |





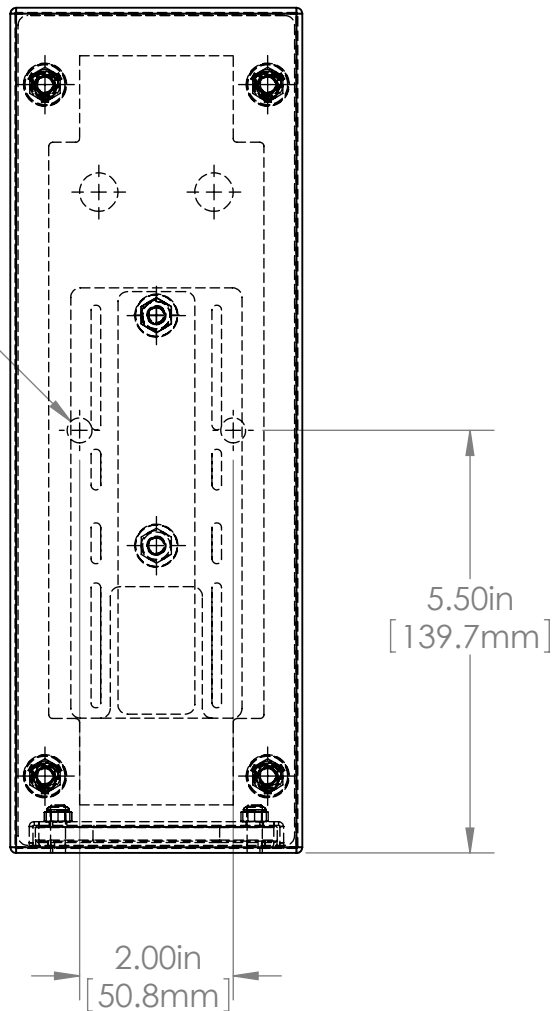


|     |        |  |      |   |          |                             |           |  |         |   |  |          |  |              |
|-----|--------|--|------|---|----------|-----------------------------|-----------|--|---------|---|--|----------|--|--------------|
|     |        |  |      | UNLESS OTHERWISE SPECIFIED:<br>DIMENSIONS ARE IN INCHES<br>SURFACE FINISH:<br>TOLERANCES: .000= +/- 0.005"<br>.00= +/- 0.010" |          | FINISH:<br><br>BURNISHED    |           | Allison Park Group, Inc. (APG)<br>4055 Alpha Drive<br>Allison Park, PA 15101 USA |         | DO NOT SCALE DRAWING  |  | REVISION |  |              |
|     |        |  |      | LINEAR:   |          | DEBUR AND BREAK SHARP EDGES |           |  |         | This document is the property of APG and is considered company confidential.<br>The information in this document is the property of APG and may not be used,<br>reproduced, or distributed in whole or in part without the prior written permission of<br>APG |  |          |  |              |
|     |        |  |      |   | NAME     | SIGNATURE                   | DATE      | Phone +1 (412) 487-8211<br>Fax +1 (412) 486-3157                                 |         | TITLE:<br><br>38S-BJ (SPYDER3 11in)   |  |          |  |              |
|     |        |  |      | DRAWN   | SCHUBERT |                             | 8/14/2019 |  |         |   |  |          |  |              |
|     |        |  |      | CHK'D   |          |                             |           | www.apgvision.com  |         | DWG NO.<br><br>38S-BJ (SPYDER 3)  |  |          |  | A3           |
|     |        |  |      | APPV'D  |          |                             |           |  |         |   |  |          |  |              |
|     |        |  |      | MFG   |          |                             |           | MATERIAL:<br><br>316 STAINLESS STEEL   |         | SCALE:1:5   |  |          |  | SHEET 1 OF 1 |
|     |        |  |      | Q.A   |          |                             |           |  |         |   |  |          |  |              |
|     |        |  |      | NOTES:  |          |                             |           |  |         |   |  |          |  |              |
| NO. | CHANGE |  | DATE | INIT.   |          |                             |           |  | WEIGHT: |   |  |          |  |              |

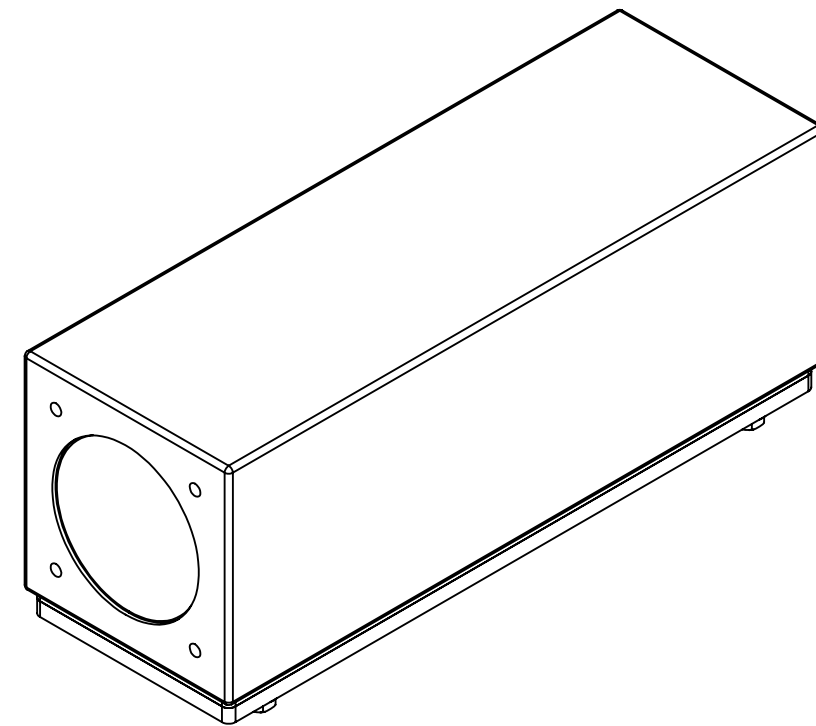
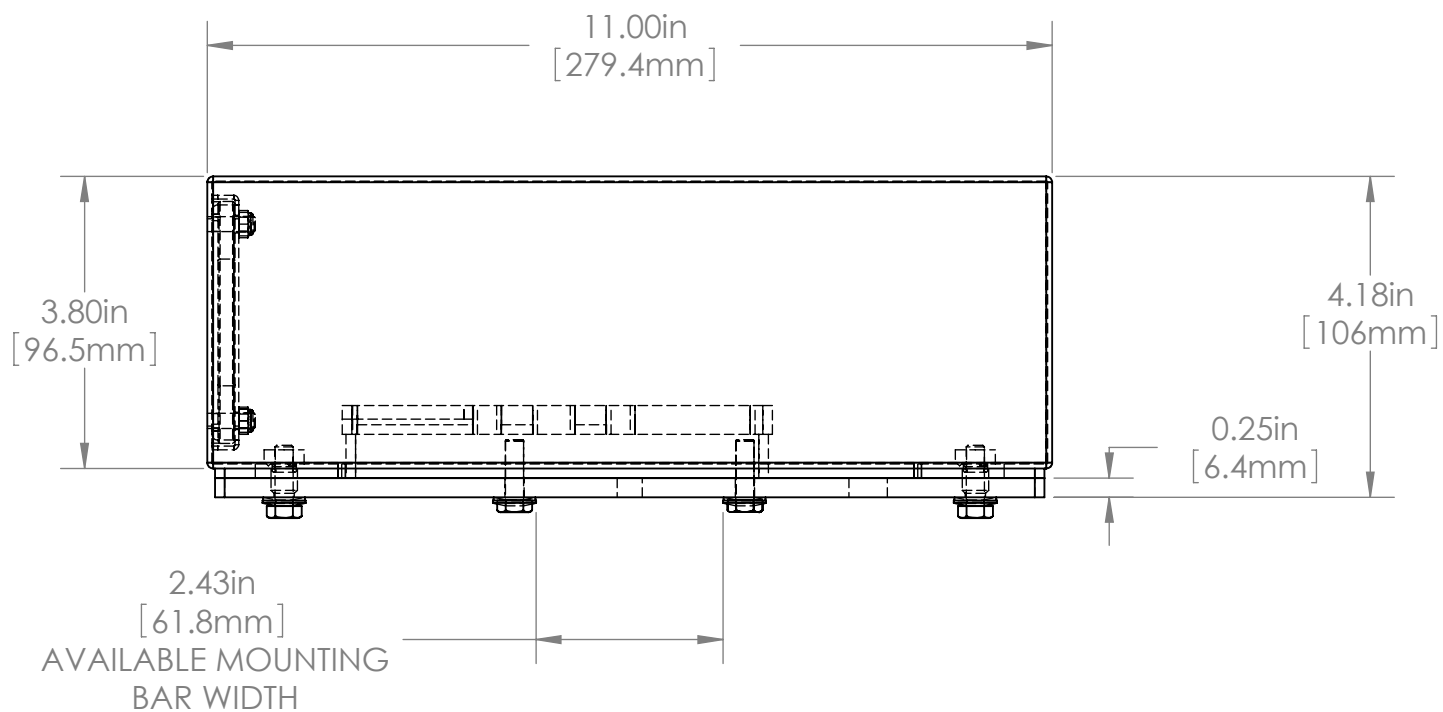
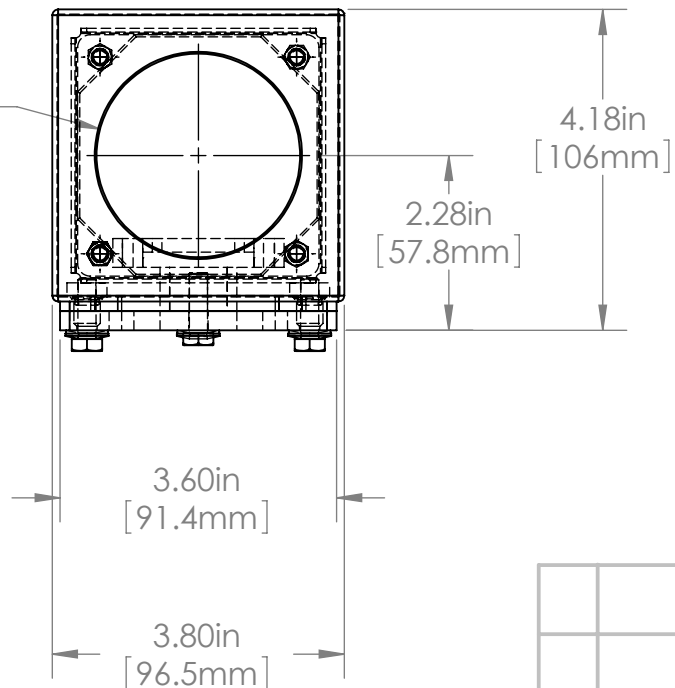


|     |  |        |  |   |  |  |  |   |  |   |  |                      |  |
|-----|--|--------|--|---|--|--|--|---|--|---|--|----------------------|--|
|     |  |        |  | UNLESS OTHERWISE SPECIFIED:<br>DIMENSIONS ARE IN INCHES<br>SURFACE FINISH:<br>TOLERANCES: .000= +/- 0.005"<br>.00= +/- 0.010" |  | FINISH:<br><b>BURNISHED</b><br>DEBUR AND BREAK SHARP EDGES |  | Allison Park Group, Inc. (APG)<br>4055 Alpha Drive<br>Allison Park, PA 15101 USA<br><br>Phone +1 (412) 487-8211<br>Fax +1 (412) 486-3157<br><br>www.apgvision.com |  | DO NOT SCALE DRAWING  |  | REVISION             |  |
|     |  |        |  | LINEAR:   |  |  |  |   |  | This document is the property of APG and is considered company confidential.<br>The information in this document is the property of APG and may not be used,<br>reproduced, or distributed in whole or in part without the prior written permission of<br>APG |  |                      |  |
|     |  |        |  | DRAWN   |  | NAME   |  | SIGNATURE   |  | DATE  |  | TITLE:               |  |
|     |  |        |  | CHK'D   |  | SCHUBERT   |  |   |  | 3/29/2012   |  | 38S-BM (SICK IVC-2D) |  |
|     |  |        |  | APPV'D  |  |  |  |   |  |   |  | 38S-BM ASSY          |  |
|     |  |        |  | MFG   |  |  |  |   |  |   |  | A3                   |  |
|     |  |        |  | Q.A   |  |  |  |   |  |   |  | SCALE: 1:5           |  |
|     |  |        |  | NOTES:  |  |  |  |   |  |   |  | SHEET 1 OF 1         |  |
| NO. |  | CHANGE |  | DATE  |  | INIT.  |  | MATERIAL:<br>BODY 316 STAINLESS STEEL<br>BASE 316 STAINLESS STEEL<br>GASKET 40D SILICONE SS PSA   |  | WEIGHT:   |  |                      |  |

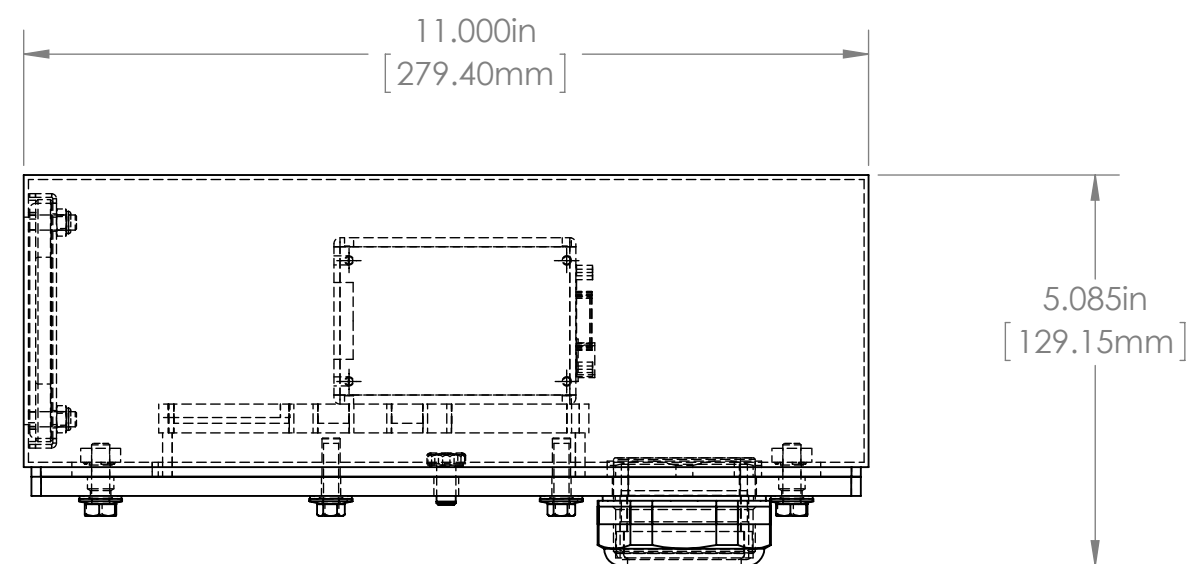
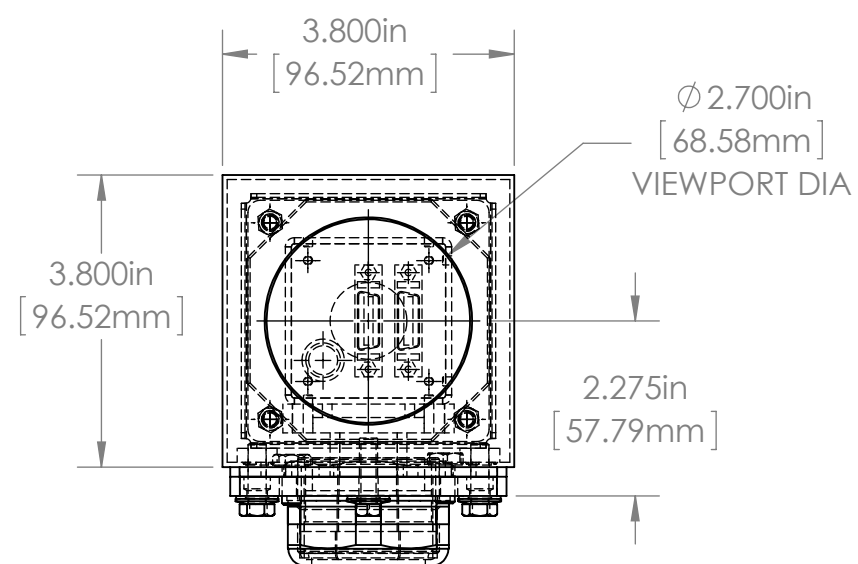
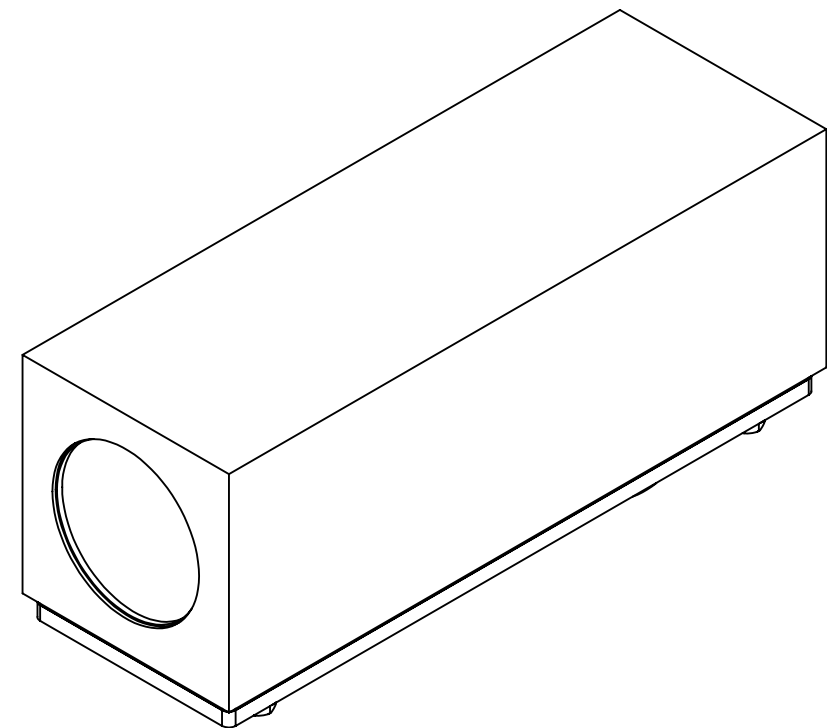
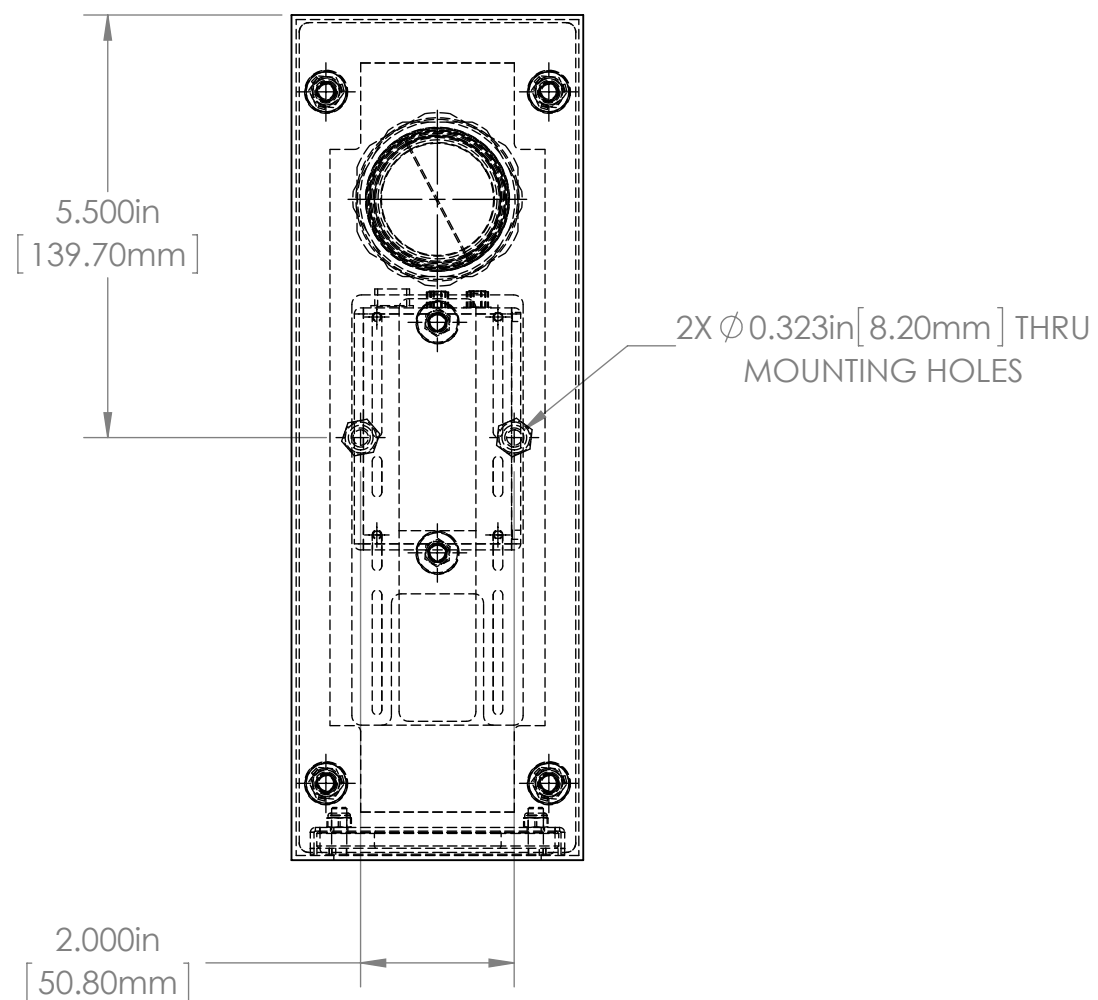
Ø0.33in  
[8.3mm]  
MOUNTING HOLES



Ø2.65in  
[67.3mm]  
VIEWPORT



|     |  |        |  |   |  |           |  |  |  |  |  |   |  |              |  |    |  |
|-----|--|--------|--|---|--|-----------|--|--|--|--|--|---|--|--------------|--|----|--|
|     |  |        |  | UNLESS OTHERWISE SPECIFIED:<br>DIMENSIONS ARE IN INCHES<br>SURFACE FINISH:<br>TOLERANCES: .000= +/- 0.005"<br>.00= +/- 0.010" |  |           |  | FINISH:<br><br>DEBUR AND BREAK SHARP EDGES |  | Allison Park Group, Inc. (APG)<br>4055 Alpha Drive<br>Allison Park, PA 15101 USA |  | DO NOT SCALE DRAWING  |  | REVISION     |  |    |  |
|     |  |        |  | LINEAR:   |  |           |  |  |  | Phone +1 (412) 487-8211<br>Fax +1 (412) 486-3157                                 |  | This document is the property of APG and is considered company confidential.<br>The information in this document is the property of APG and may not be used,<br>reproduced, or distributed in whole or in part without the prior written permission of<br>APG |  |              |  |    |  |
|     |  |        |  | NAME  |  | SIGNATURE |  | DATE                                       |  | www.apgvision.com  |  | TITLE:<br><br>38S-BN ASSY DIMS<br>(JAI AD080)   |  |              |  |    |  |
|     |  |        |  | DRAWN SCHUBERT  |  |           |  | 8/13/2010                                  |  |  |  |   |  |              |  |    |  |
|     |  |        |  | CHK'D   |  |           |  |  |  |  |  |   |  |              |  |    |  |
|     |  |        |  | APPV'D  |  |           |  |  |  |  |  |   |  |              |  |    |  |
|     |  |        |  | MFG   |  |           |  |  |  |  |  | DWG NO.<br><br>38S-BN   |  |              |  |    |  |
|     |  |        |  | Q.A   |  |           |  |  |  |  |  |   |  |              |  |    |  |
|     |  |        |  | NOTES:<br><br>ALL GASKETS 40D SILICONE  |  |           |  |  |  |  |  | MATERIAL:<br><br>316 STAINLESS STEEL BODY<br>6061 T6 ALUMINUM BASE  |  |              |  | A3 |  |
| NO. |  | CHANGE |  | DATE  |  | INIT.     |  |  |  | WEIGHT:  |  | SCALE:1:5   |  | SHEET 1 OF 1 |  |    |  |

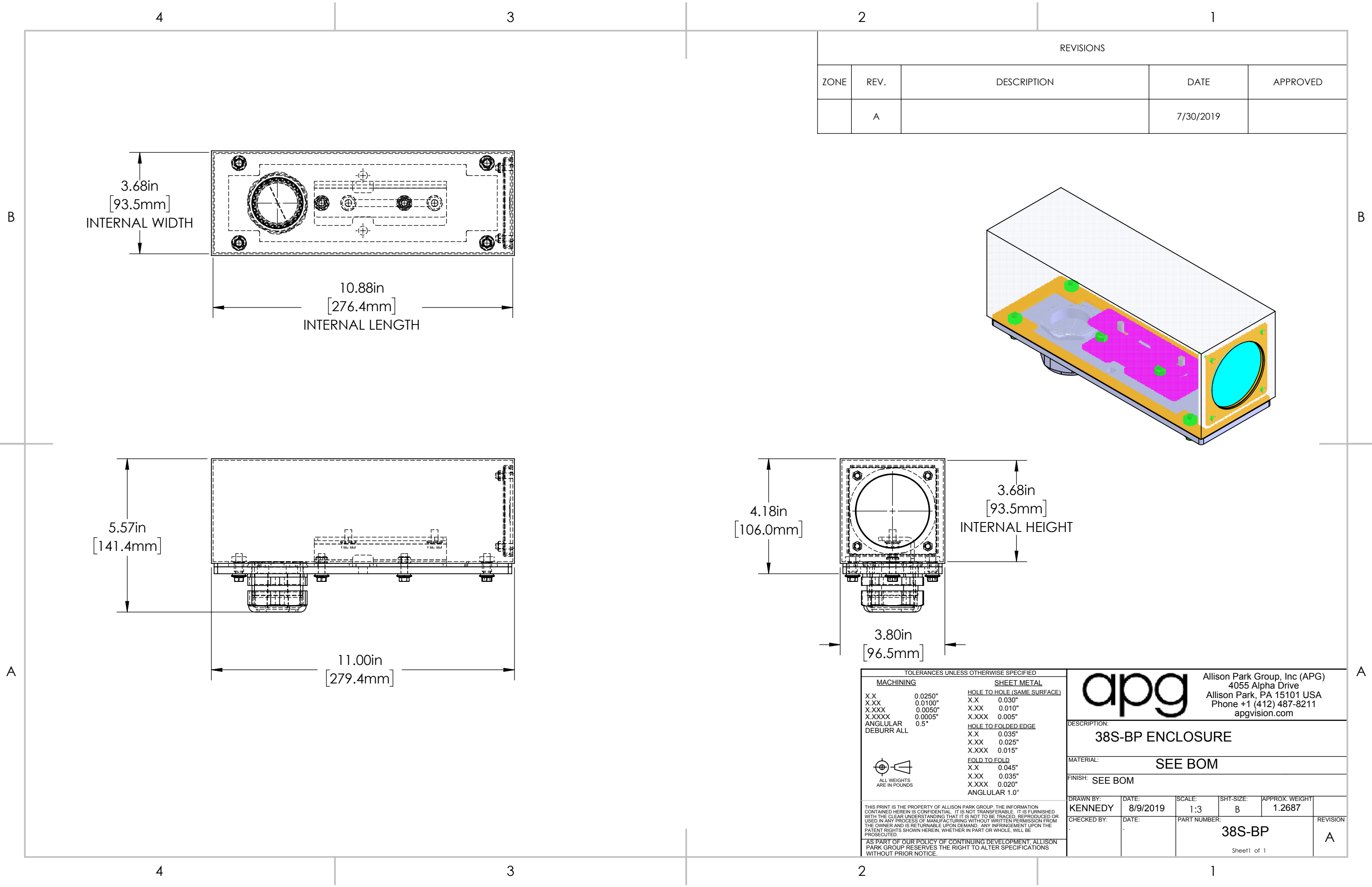


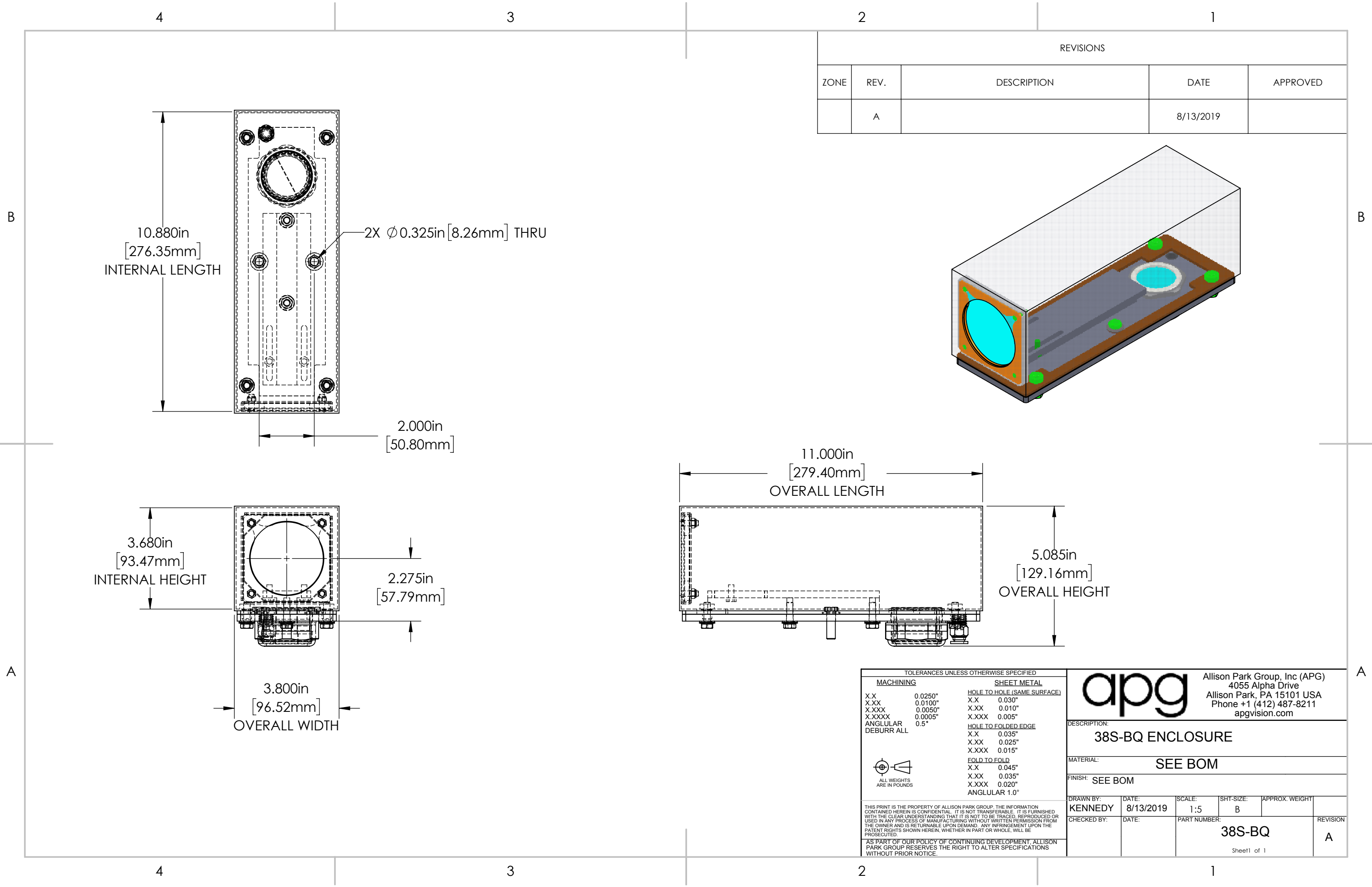
|     |        |  |      |   |          |  |           |  |         |   |           |          |              |         |
|-----|--------|--|------|---|----------|--|-----------|--|---------|---|-----------|----------|--------------|---------|
|     |        |  |      | UNLESS OTHERWISE SPECIFIED:<br>DIMENSIONS ARE IN INCHES<br>SURFACE FINISH:<br>TOLERANCES: .000= +/- 0.005"<br>.00= +/- 0.010" |          | FINISH:<br><br>DEBUR AND BREAK SHARP EDGES |           | Allison Park Group, Inc. (APG)<br>4055 Alpha Drive<br>Allison Park, PA 15101 USA |         | DO NOT SCALE DRAWING  |           | REVISION |              |         |
|     |        |  |      | LINEAR:   |          |  |           | Phone +1 (412) 487-8211<br>Fax +1 (412) 486-3157                                 |         | This document is the property of APG and is considered company confidential.<br>The information in this document is the property of APG and may not be used,<br>reproduced, or distributed in whole or in part without the prior written permission of<br>APG |           |          |              |         |
|     |        |  |      |   | NAME     | SIGNATURE                                  | DATE      | www.apgvision.com  |         |   |           |          |              |         |
|     |        |  |      | DRAWN   | SCHUBERT |  | 3/29/2012 |  |         |   |           |          |              |         |
|     |        |  |      | CHK'D   |          |  |           |  |         |   |           |          |              |         |
|     |        |  |      | APPV'D  |          |  |           |  |         |   |           |          |              |         |
|     |        |  |      | MFG   |          |  |           |  |         |   |           |          |              |         |
|     |        |  |      | Q.A   |          |  |           |  |         |   |           |          |              |         |
|     |        |  |      | NOTES:  |          |  |           | MATERIAL:  |         |   |           |          |              | DWG NO. |
| NO. | CHANGE |  | DATE | INIT.   |          |  |           |  | WEIGHT: |   | SCALE:1:5 |          | SHEET 1 OF 1 |         |

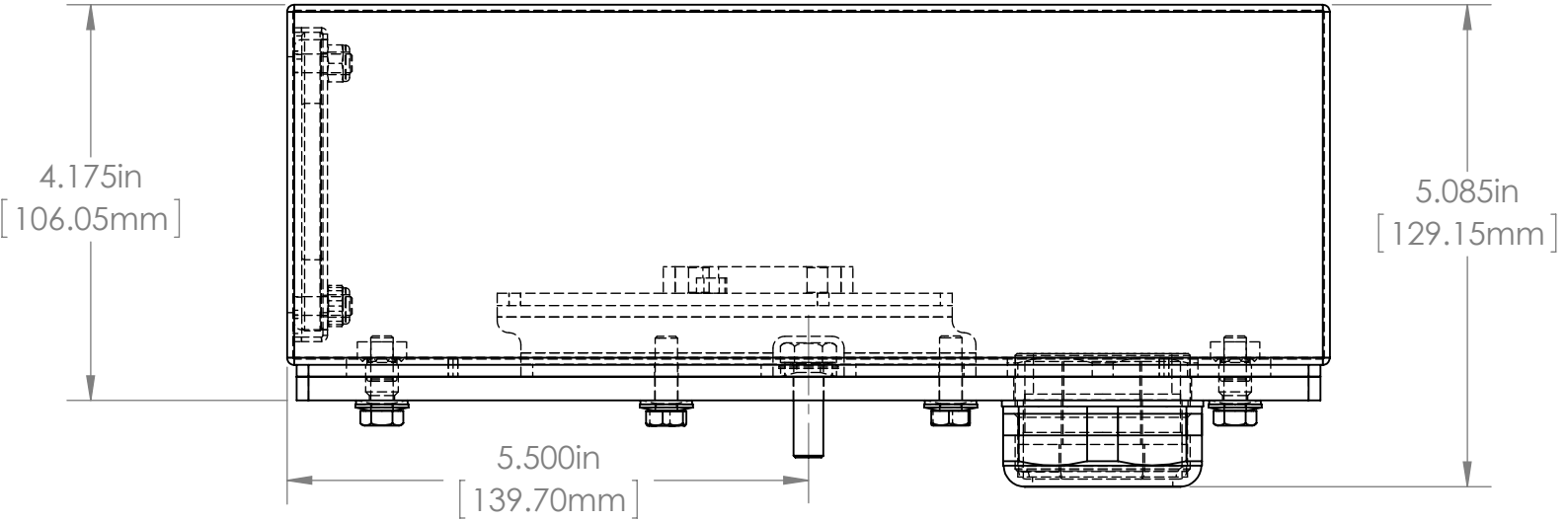
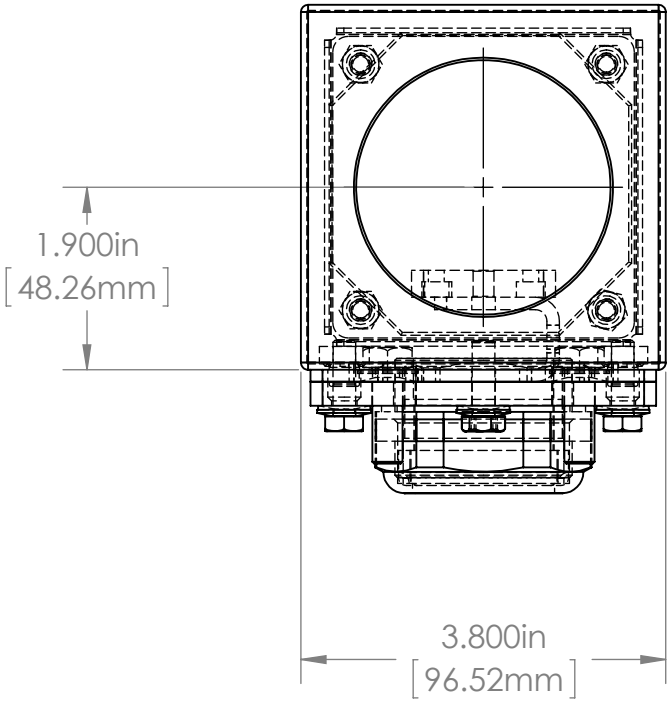
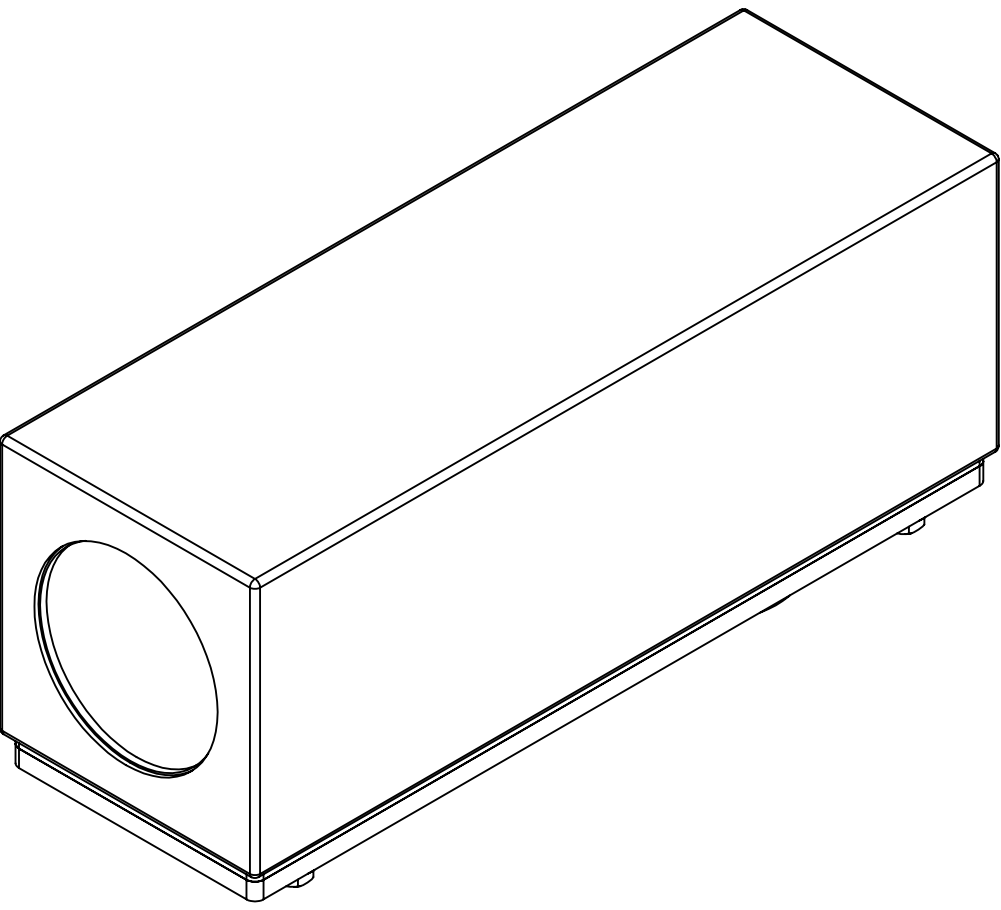
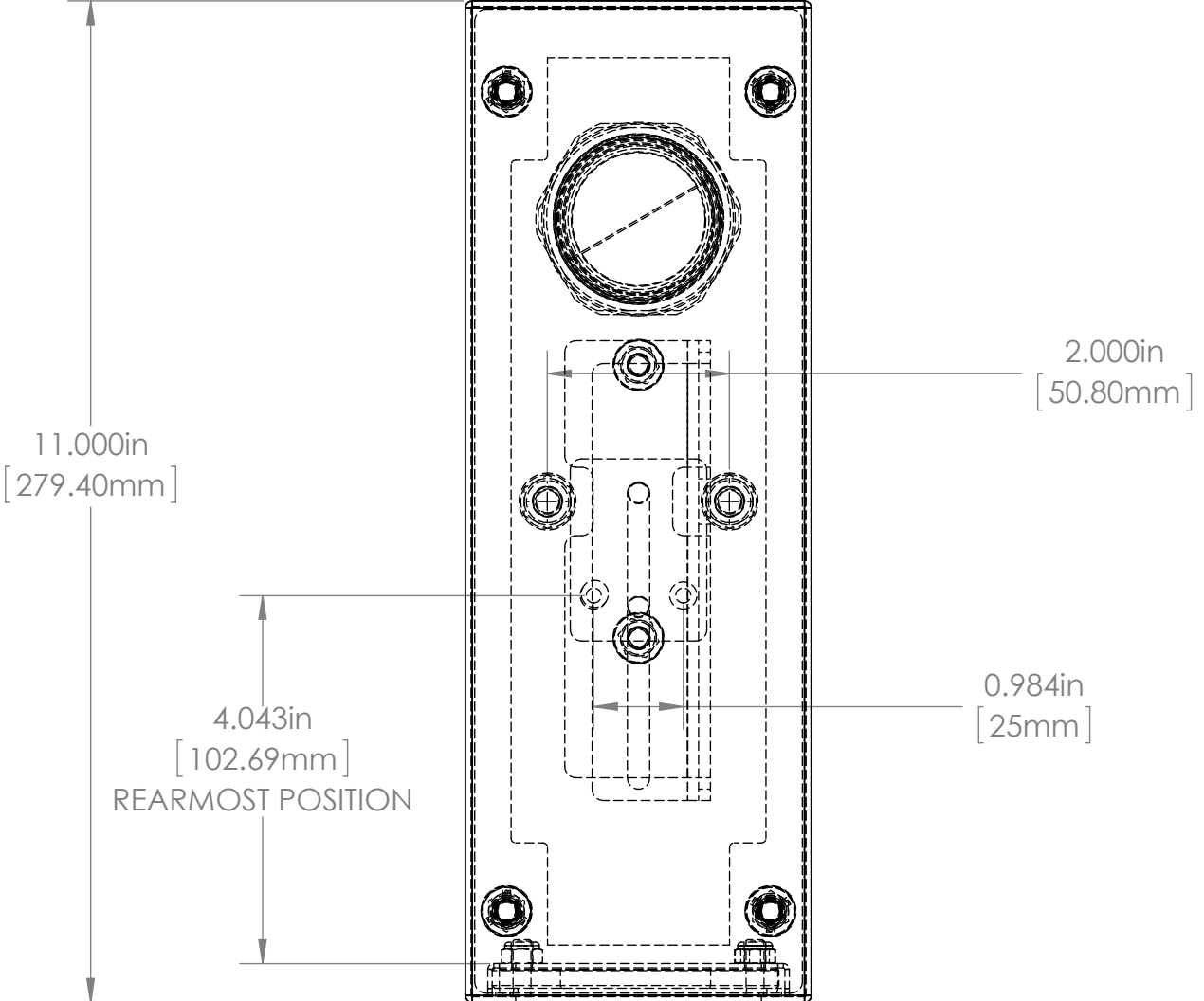
38S-BO (JAI AD-080CL)

38S-BO

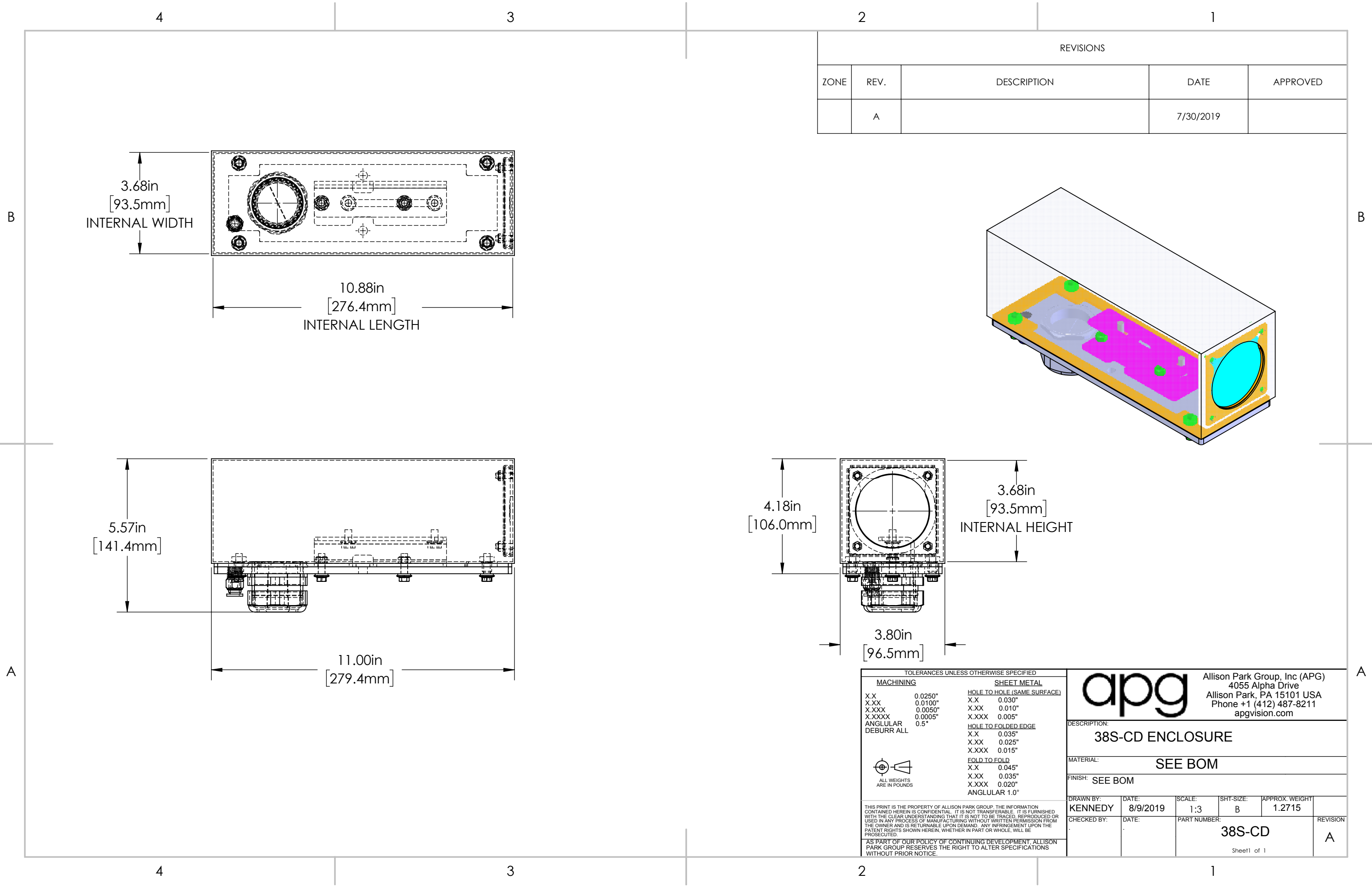
A3



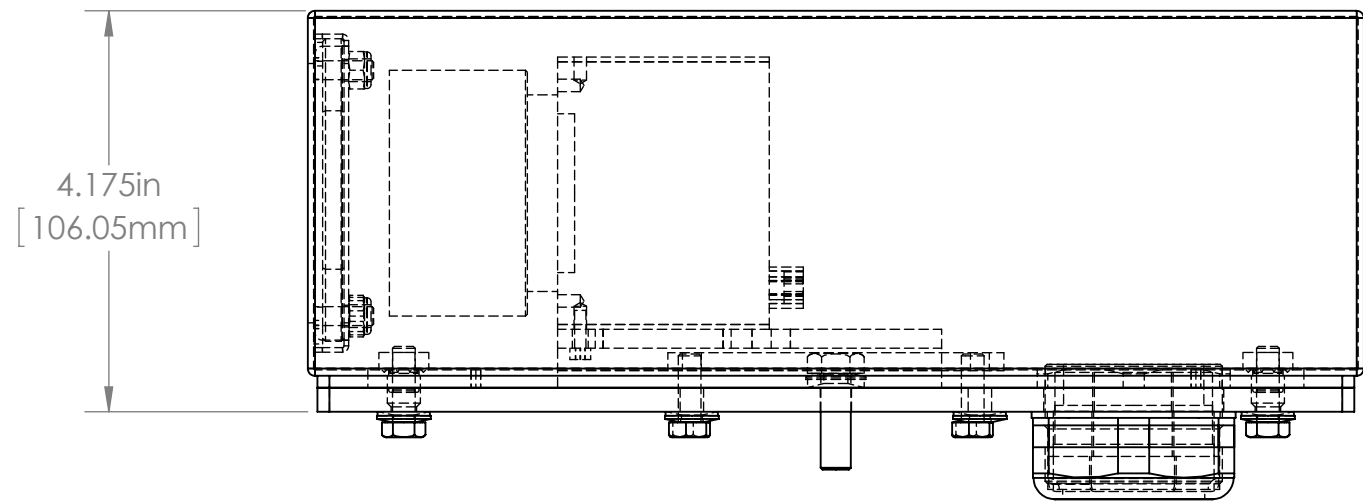
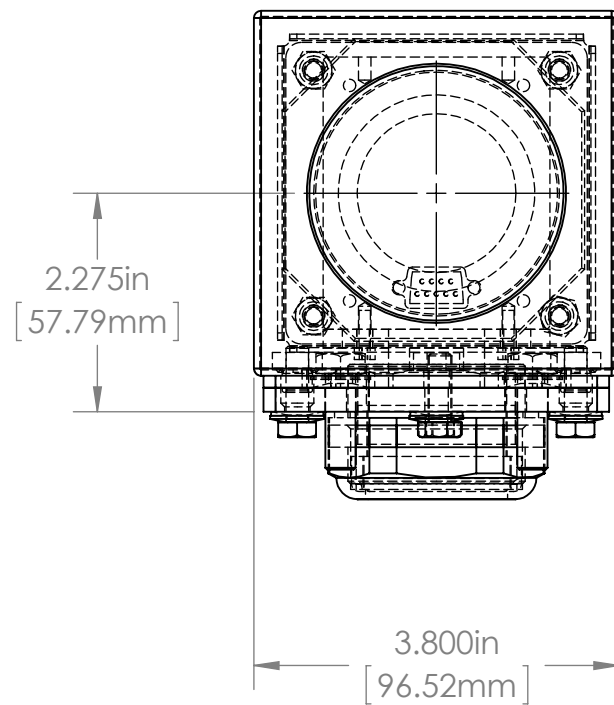
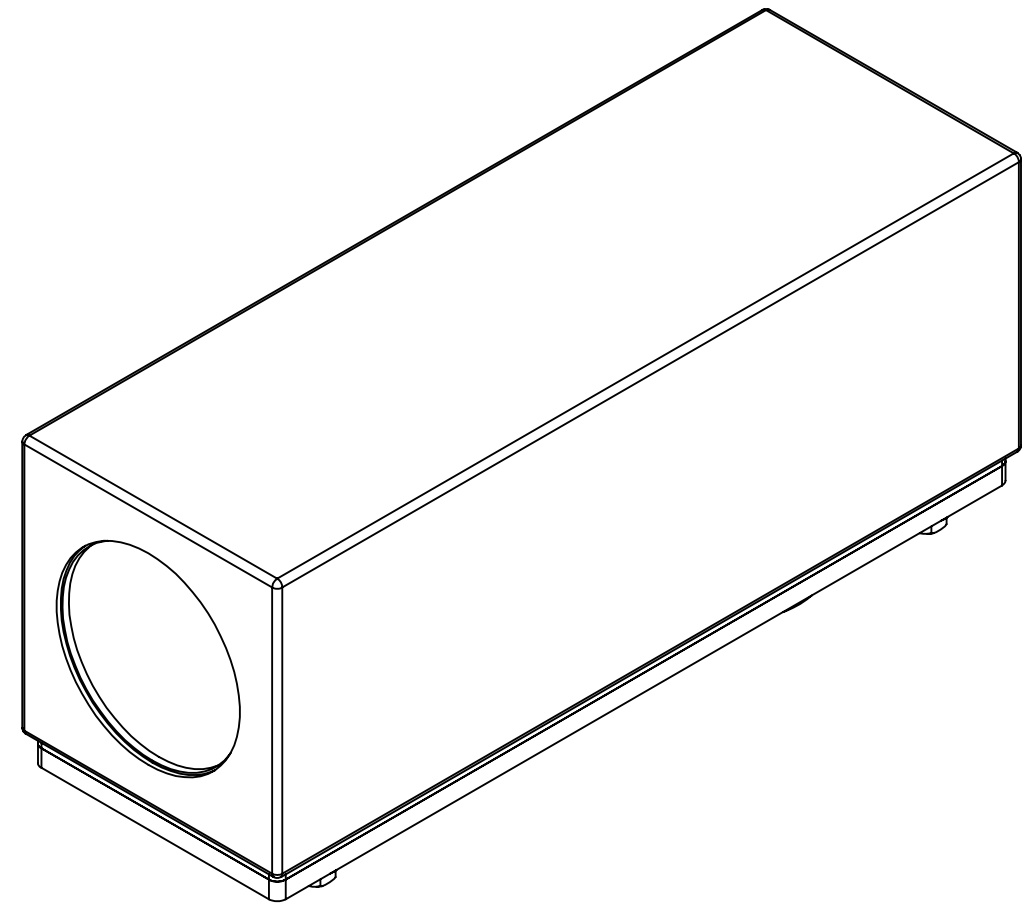
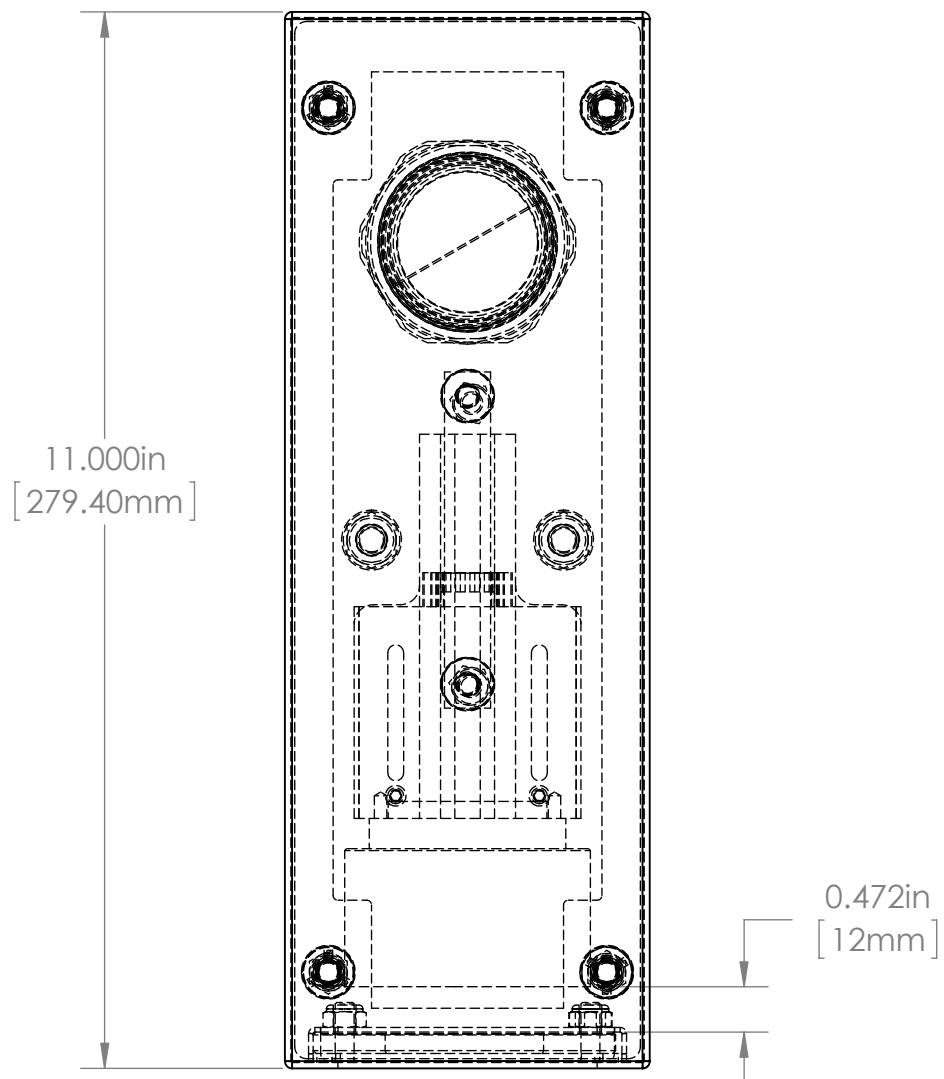




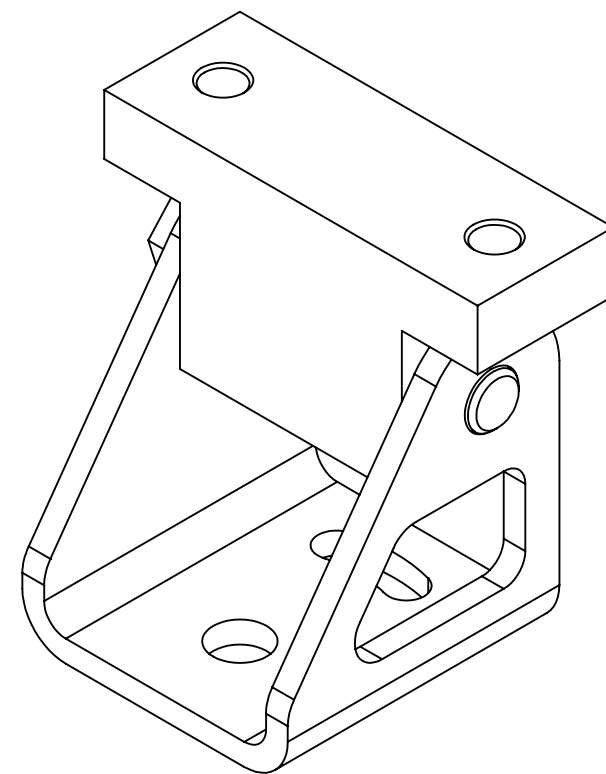
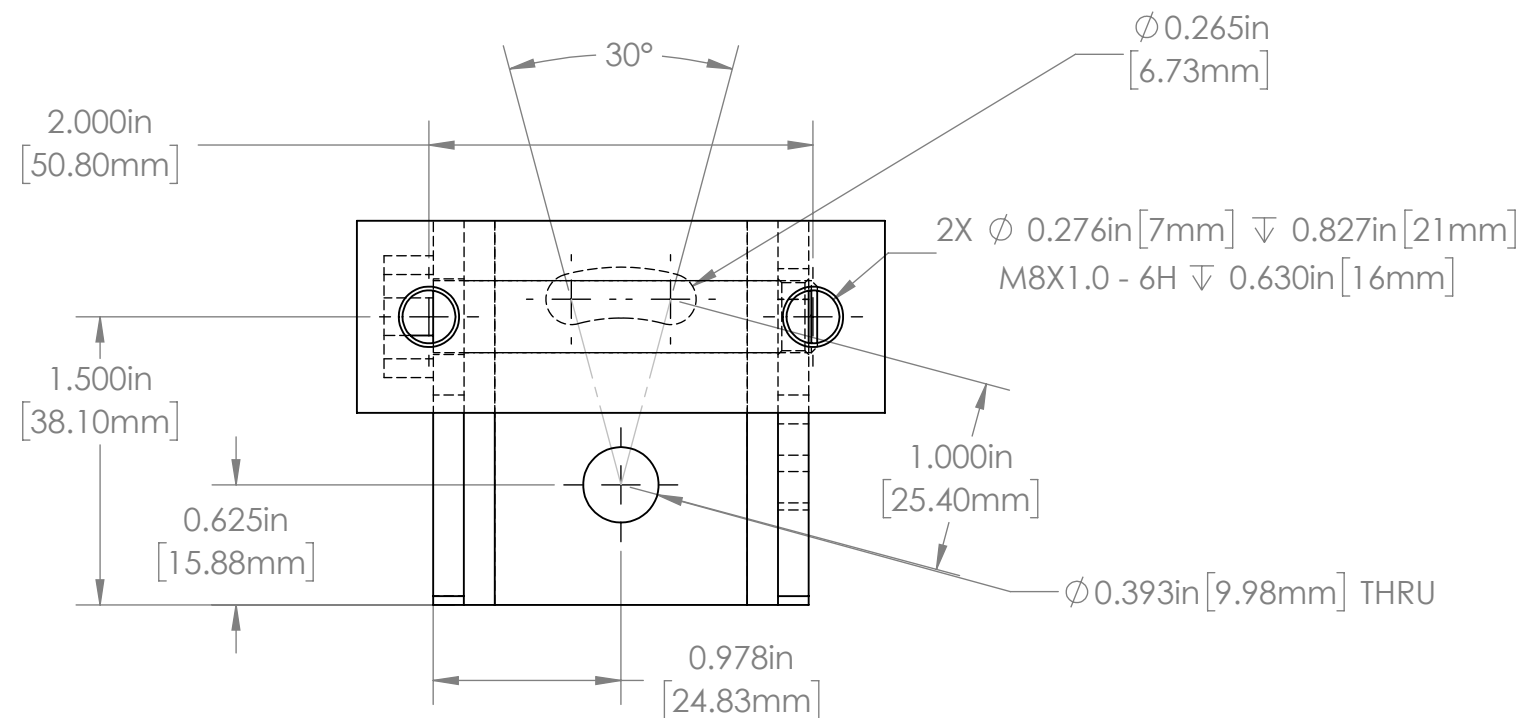
|     |  |        |  |   |  |       |  |                             |  |  |  |   |  |   |  |                                      |  |          |  |              |  |  |  |
|-----|--|--------|--|---|--|-------|--|-----------------------------|--|--|--|---|--|---|--|--------------------------------------|--|----------|--|--------------|--|--|--|
|     |  |        |  | UNLESS OTHERWISE SPECIFIED:<br>DIMENSIONS ARE IN INCHES<br>SURFACE FINISH:<br>TOLERANCES: .000= +/- 0.005"<br>.00= +/- 0.010" |  |       |  | FINISH:<br><br>BURNISHED    |  | Allison Park Group, Inc. (APG)<br>4055 Alpha Drive<br>Allison Park, PA 15101 USA |  |   |  | DO NOT SCALE DRAWING  |  |                                      |  | REVISION |  |              |  |  |  |
|     |  |        |  | LINEAR:   |  |       |  | DEBUR AND BREAK SHARP EDGES |  |  |  |   |  | This document is the property of APG and is considered company confidential.<br>The information in this document is the property of APG and may not be used,<br>reproduced, or distributed in whole or in part without the prior written permission of<br>APG |  |                                      |  |          |  |              |  |  |  |
|     |  |        |  |   |  | NAME  |  | SIGNATURE                   |  | DATE   |  | Phone +1 (412) 487-8211<br>Fax +1 (412) 486-3157<br><br>www.apgvision.com |  |   |  | TITLE:<br><br><br>38S-BT (DALSA BOA) |  |          |  |              |  |  |  |
|     |  | DRAWN  |  | OLSON   |  |       |  | 1/27/2016                   |  |  |  |   |  |   |  |                                      |  |          |  |              |  |  |  |
|     |  | CHK'D  |  |   |  |       |  |                             |  |  |  |   |  |   |  |                                      |  |          |  |              |  |  |  |
|     |  | APPV'D |  |   |  |       |  |                             |  |  |  |   |  |   |  |                                      |  |          |  |              |  |  |  |
|     |  | MFG    |  |   |  |       |  |                             |  |  |  |   |  |   |  |                                      |  |          |  |              |  |  |  |
|     |  | Q.A    |  |   |  |       |  |                             |  |  |  | MATERIAL:<br><br>316 STAINLESS STEEL                                      |  |   |  | DWG NO.<br><br>38S-BT                |  |          |  | A3           |  |  |  |
|     |  | NOTES: |  |   |  |       |  |                             |  |  |  |   |  |   |  |                                      |  |          |  |              |  |  |  |
| NO. |  | CHANGE |  | DATE  |  | INIT. |  |                             |  |  |  | WEIGHT:   |  |   |  | SCALE:1:4                            |  |          |  | SHEET 1 OF 1 |  |  |  |



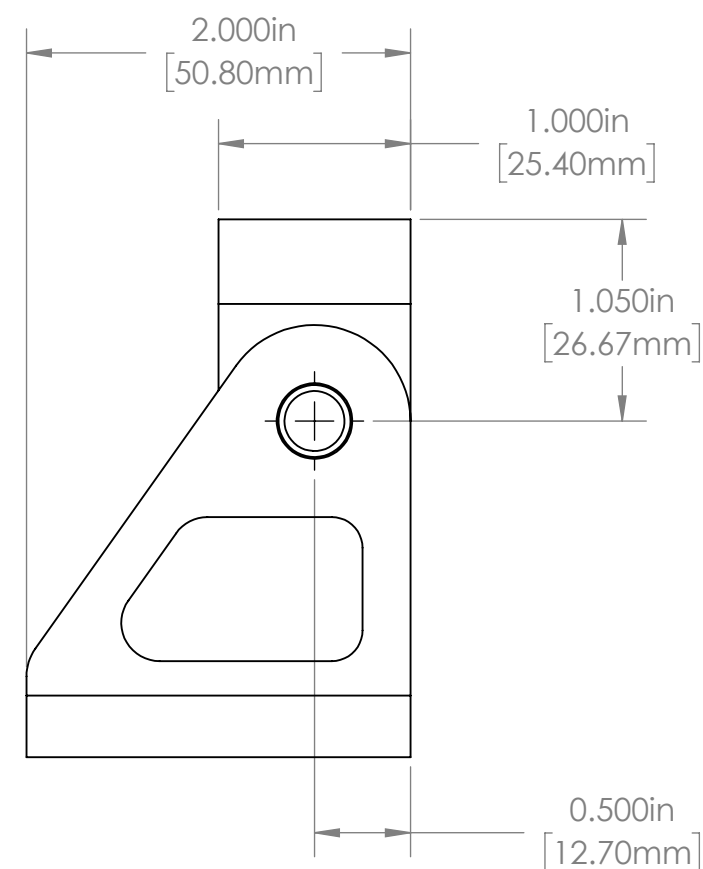
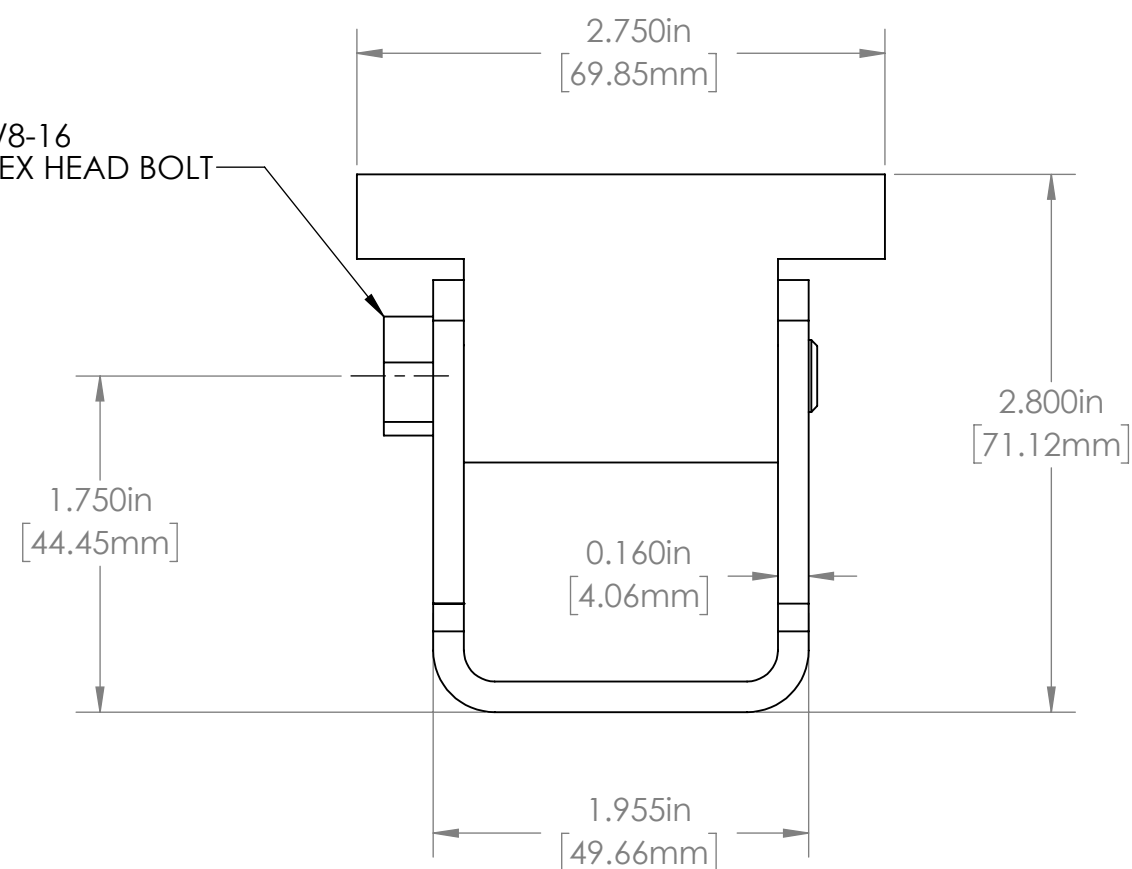




|     |  |        |  |   |  |                             |  |  |  |   |  |                                   |  |
|-----|--|--------|--|---|--|-----------------------------|--|--|--|---|--|-----------------------------------|--|
|     |  |        |  | UNLESS OTHERWISE SPECIFIED:<br>DIMENSIONS ARE IN INCHES<br>SURFACE FINISH:<br>TOLERANCES: .000= +/- 0.005"<br>.00= +/- 0.010" |  | FINISH:<br><br>BURNISHED    |  | Allison Park Group, Inc. (APG)<br>4055 Alpha Drive<br>Allison Park, PA 15101 USA |  | DO NOT SCALE DRAWING  |  | REVISION                          |  |
|     |  |        |  | LINEAR:   |  | DEBUR AND BREAK SHARP EDGES |  |  |  | This document is the property of APG and is considered company confidential.<br>The information in this document is the property of APG and may not be used,<br>reproduced, or distributed in whole or in part without the prior written permission of<br>APG |  |                                   |  |
|     |  |        |  |   |  | NAME                        |  | SIGNATURE  |  | DATE  |  | TITLE:<br><br>38S-CG spyder3 ASSY |  |
|     |  |        |  | DRAWN   |  | SCHUBERT                    |  |  |  | 11/21/2012  |  |                                   |  |
|     |  |        |  | CHK'D   |  |                             |  |  |  |   |  |                                   |  |
|     |  |        |  | APPV'D  |  |                             |  |  |  |   |  |                                   |  |
|     |  |        |  | MFG   |  |                             |  |  |  |   |  |                                   |  |
|     |  |        |  | Q.A   |  |                             |  |  |  |   |  | DWG NO.<br><br>38S-BJ SPYDER3     |  |
|     |  |        |  | NOTES:  |  |                             |  |  |  |   |  |                                   |  |
|     |  |        |  |   |  |                             |  |  |  | MATERIAL:<br><br>316 STAINLESS STEEL  |  | A3                                |  |
|     |  |        |  |   |  |                             |  |  |  | WEIGHT:   |  | SCALE:1:4                         |  |
| NO. |  | CHANGE |  | DATE  |  | INIT.                       |  |  |  |   |  | SHEET 1 OF 1                      |  |



3/8-16  
HEX HEAD BOLT



For more information please contact:

**BOCK OPTONICS INC.**  
14 Steinway Blvd., Unit 7  
Toronto, Ontario M9W 6M6

Tel: (416) 674-2804  
[sales@bockoptronics.ca](mailto:sales@bockoptronics.ca)  
[www.bockoptronics.ca](http://www.bockoptronics.ca)

|     |        |  |      |   |          |                             |           |   |  |              |          |    |  |
|-----|--------|--|------|---|----------|-----------------------------|-----------|---|--|--------------|----------|----|--|
|     |        |  |      | UNLESS OTHERWISE SPECIFIED:<br>DIMENSIONS ARE IN INCHES<br>SURFACE FINISH:<br>TOLERANCES: .000= +/- 0.005"<br>.00= +/- 0.010" |          | FINISH:<br><br>BURNISHED    |           | Allison Park Group, Inc. (APG)<br>4055 Alpha Drive<br>Allison Park, PA 15101 USA<br><br>Phone +1 (412) 487-8211<br>Fax +1 (412) 486-3157<br><br>www.apgvision.com | DO NOT SCALE DRAWING   |              | REVISION |    |  |
|     |        |  |      | LINEAR:   |          | DEBUR AND BREAK SHARP EDGES |           |   | This document is the property of APG and is considered company confidential. The information in this document is the property of APG and may not be used, reproduced, or distributed in whole or in part without the prior written permission of APG |              |          |    |  |
|     |        |  |      |   | NAME     | SIGNATURE                   | DATE      |   | TITLE:   |              |          |    |  |
|     |        |  |      | DRAWN   | SCHUBERT |                             | 5/17/2016 |   | 38S-PT1 (ASSY)   |              |          |    |  |
|     |        |  |      | CHK'D   |          |                             |           |   |  |              |          |    |  |
|     |        |  |      | APPV'D  |          |                             |           |   |  |              |          |    |  |
|     |        |  |      | MFG   |          |                             |           | MATERIAL:<br><br>316 STAINLESS STEEL  | DWG NO.  | 38S-PT1 ASSY |          | A3 |  |
|     |        |  |      | Q.A   |          |                             |           |   |  |              |          |    |  |
|     |        |  |      | NOTES:  |          |                             |           | WEIGHT:   | SCALE:1:1  | SHEET 1 OF 1 |          |    |  |
| NO. | CHANGE |  | DATE | INIT.   |          |                             |           |   |  |              |          |    |  |